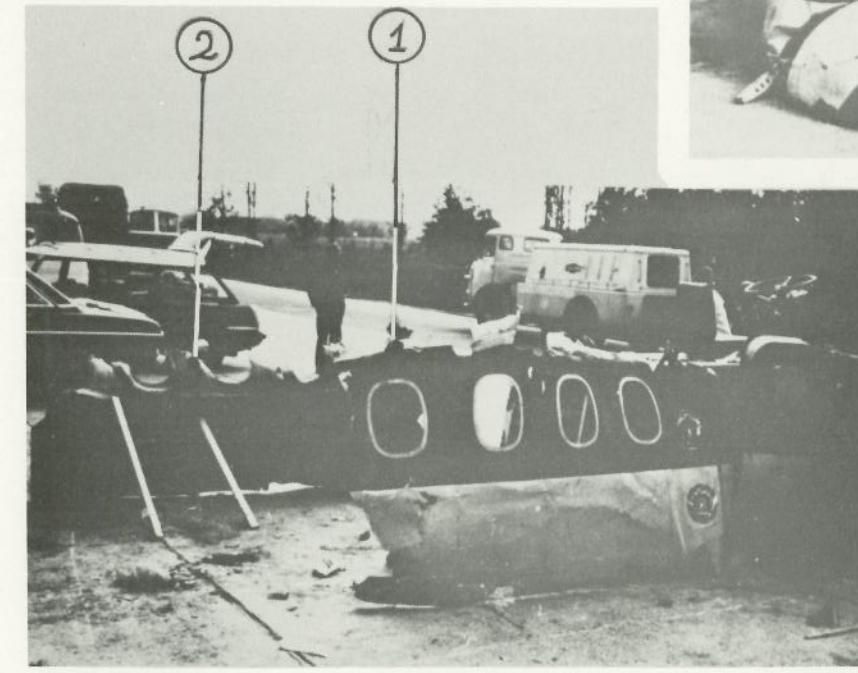


1. Right side of the Trident Three fuselage cut above the windows
2. Left side of the Trident Three fuselage cut in the middle of the windows
- ① Desna strana trupa TRIDENT THREE presečena isnad prozora
- ② Leva strana trupa TRIDENT THREE presečena po sredini prozora



DISTANCES ARE NOT IN SCALE

Razmera nije u razmeri

Simulating of actually seen size and position of the TRIDENT THREE aircraft viewed from the right seat of the DC-9 aircraft

Marking 1

- A moment at 1,76 sec. before the collision
- Distance between the aircraft - 770 m.
(marked with no. 3)

Marking 2

- A moment at 6 sec. before the collision
- Distance between the aircraft - 2.550 m.
(marked with no. 4)

TRIDENT THREE AIRCRAFT

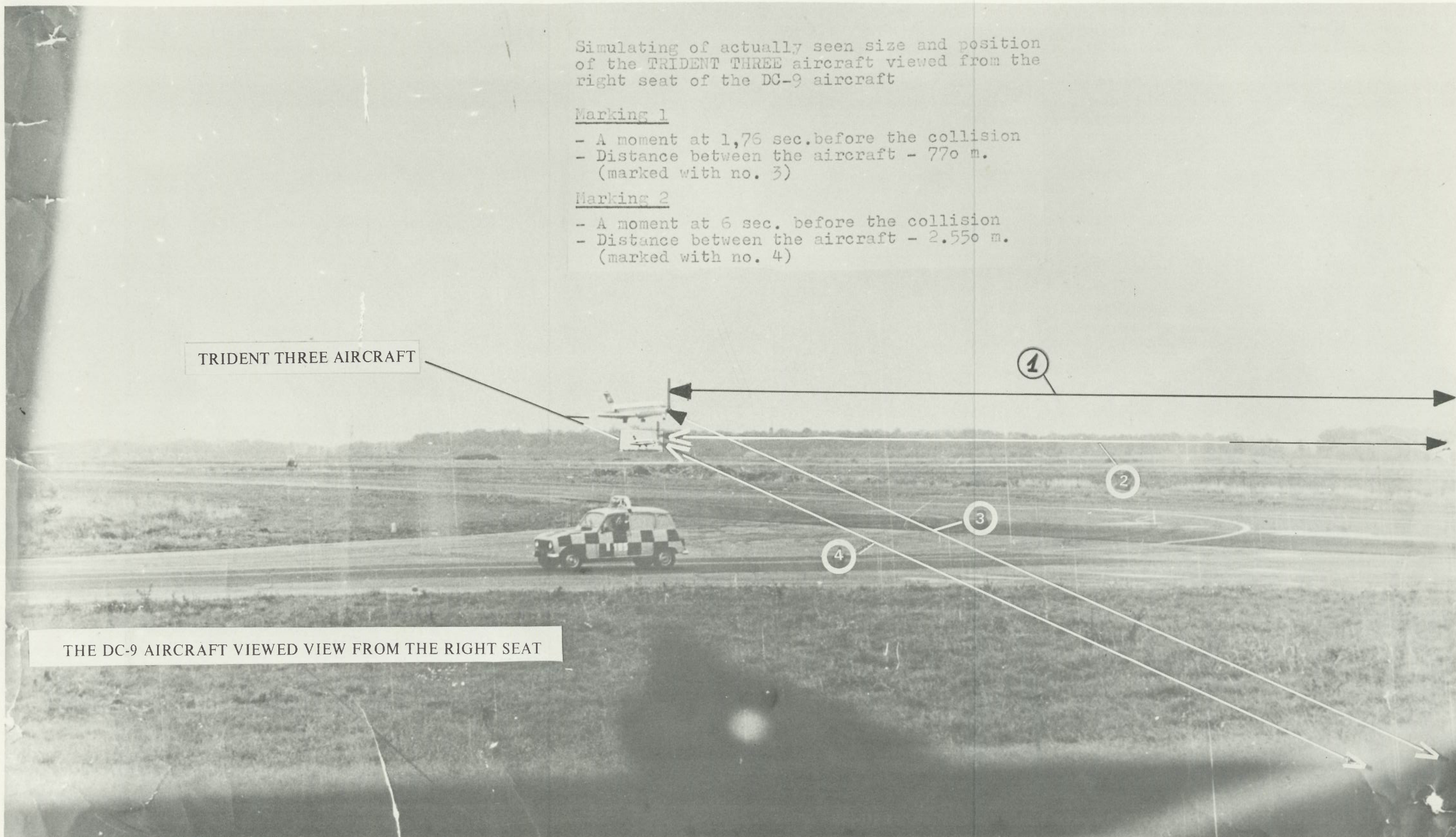
1

2

3

4

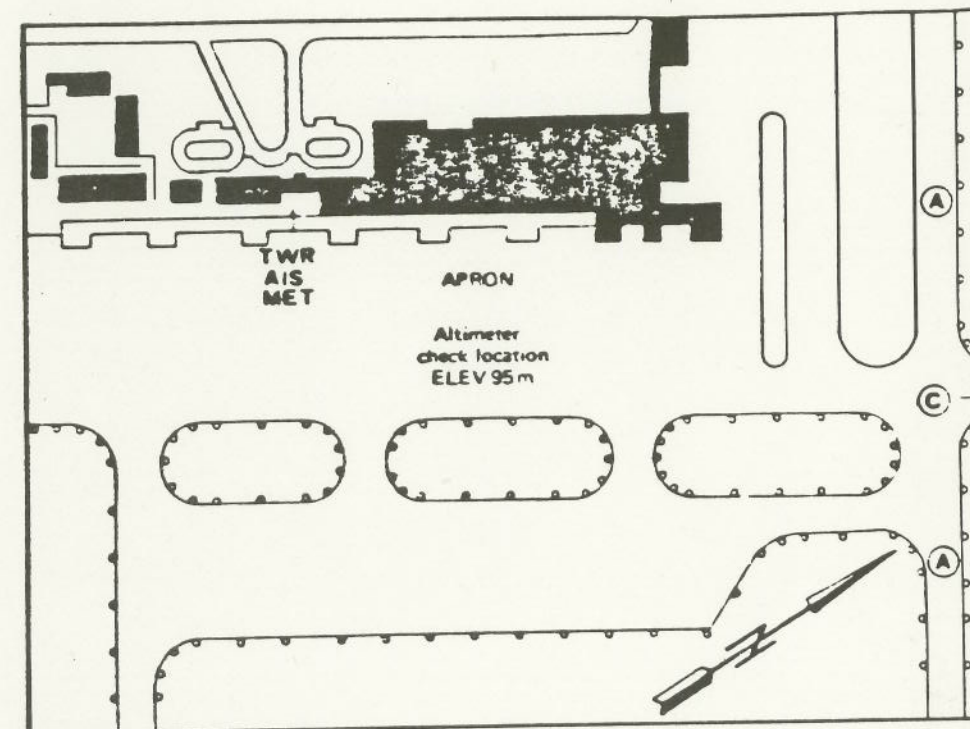
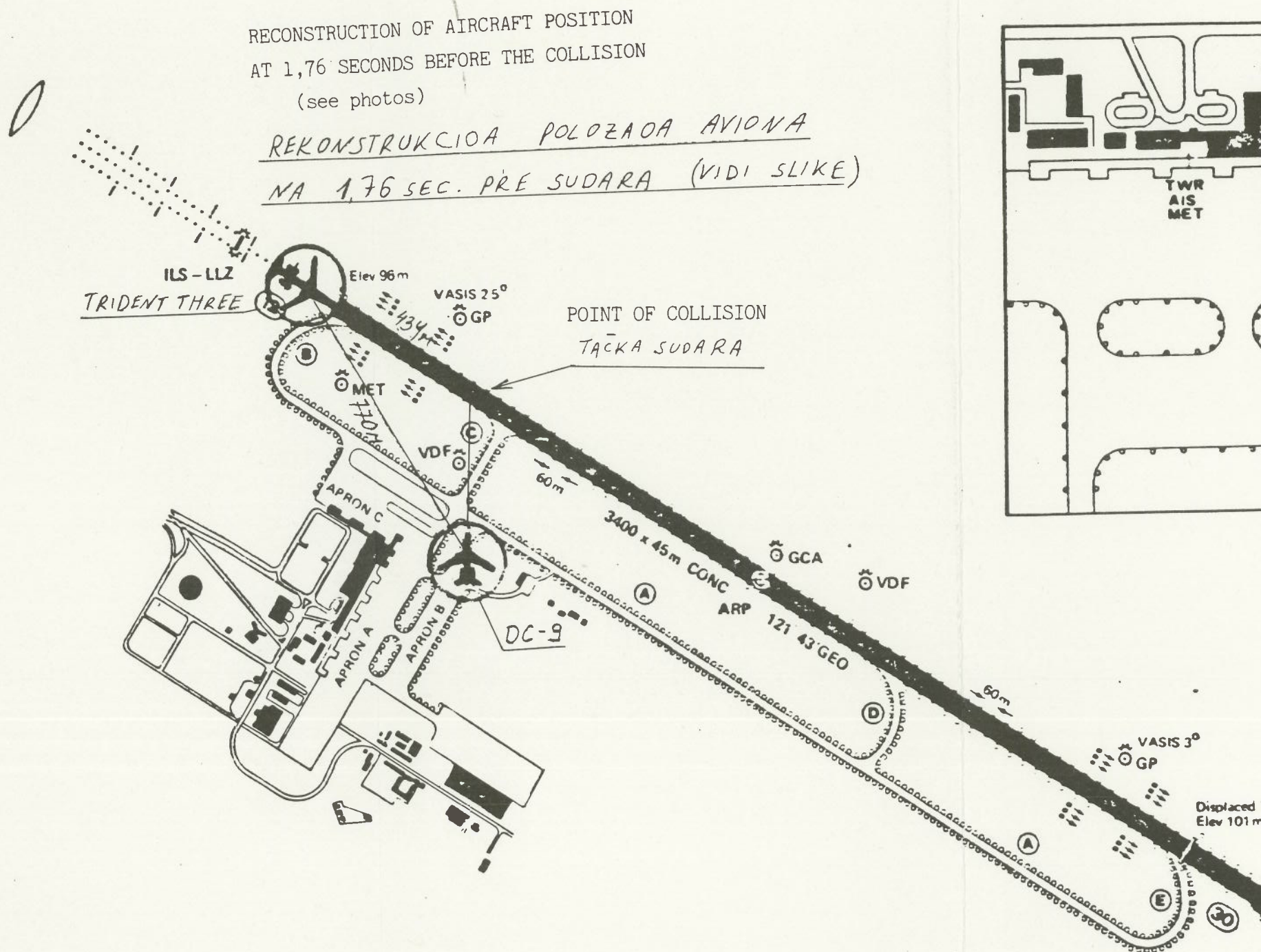
THE DC-9 AIRCRAFT VIEWED VIEW FROM THE RIGHT SEAT



AERODROME ELEVATION 101 m

RECONSTRUCTION OF AIRCRAFT POSITION
AT 1,76 SECONDS BEFORE THE COLLISION
(see photos)

REKONSTRUKCIOA POLOZAOA AVIONA
NA 1,76 SEC. PRE SUDARA (VIDI SLIKE)



AERODROME LIGHTING

RWY	APCH	SFL	THR	TDZ	RWY	CL LGT	Rwy end light
12	W VRB LIH R VRB LIL	+	G VRB LIH		W VRB LIH YCZ last 600m		R VRB LIH
30							

Rwy 30: 3400m - 3000m Red Rwy edge lights
Other lighting: Twy and apron B LIL



SCALE 1:15 000



SCN-5312
SCN-5340G

NOTE: THIS IS AN ARRANGEMENT DRAWING ONLY. THE NOMENCLATURE AND MARKINGS NOTED HEREIN ARE FOR IDENTIFICATION AND NOT NECESSARILY THAT USED ON PRODUCTION DRAWINGS.

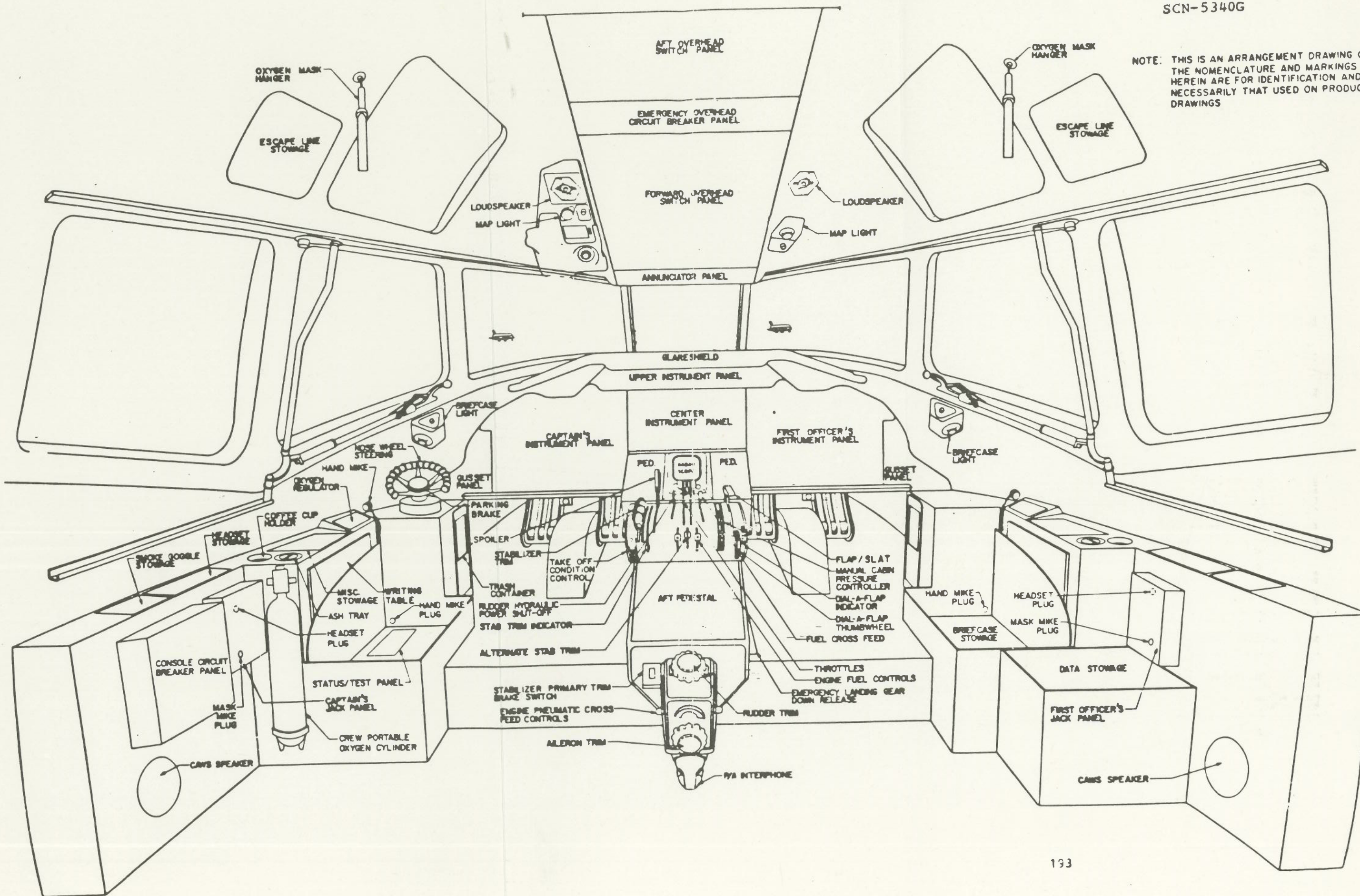
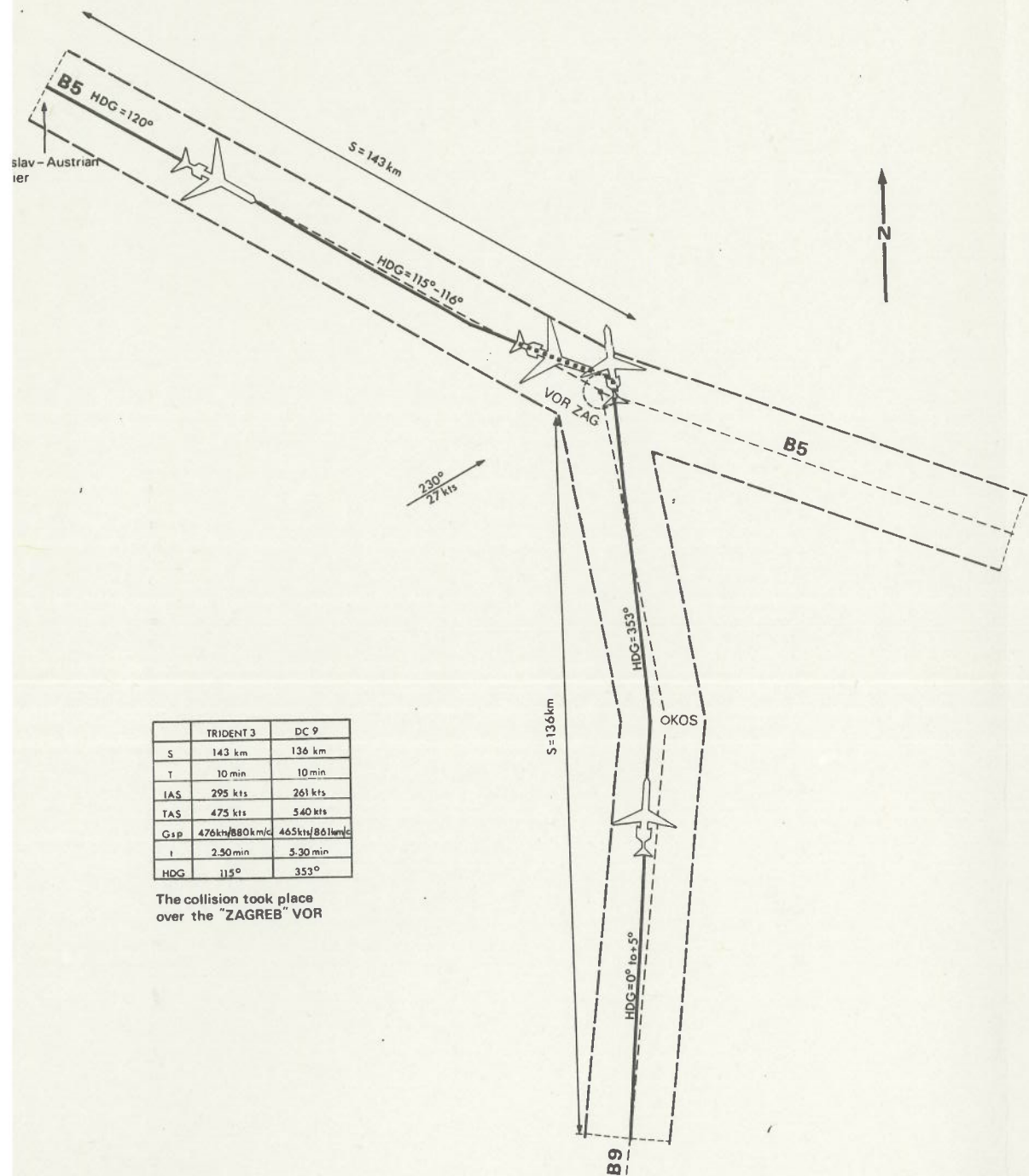
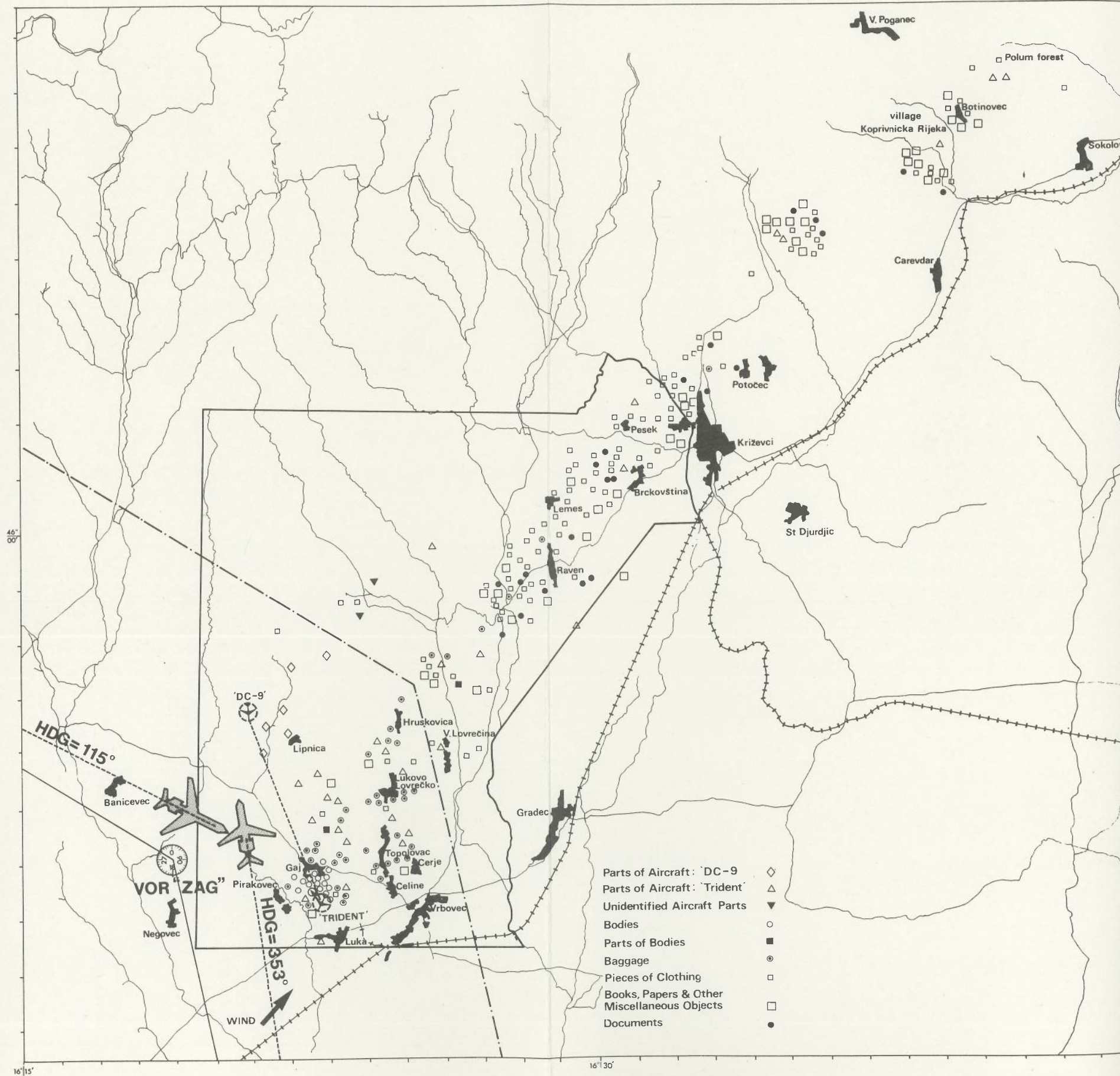


TABLE 1

Calculation and schematic diagram of flight of Trident-3 and DC-9 aircraft from the moment when the T-3 crossed the Yugoslav-Austrian frontier



Map Showing Position of Wreckage



OA161 Call Sign
 (270) Flight Level (in hundreds of feet)

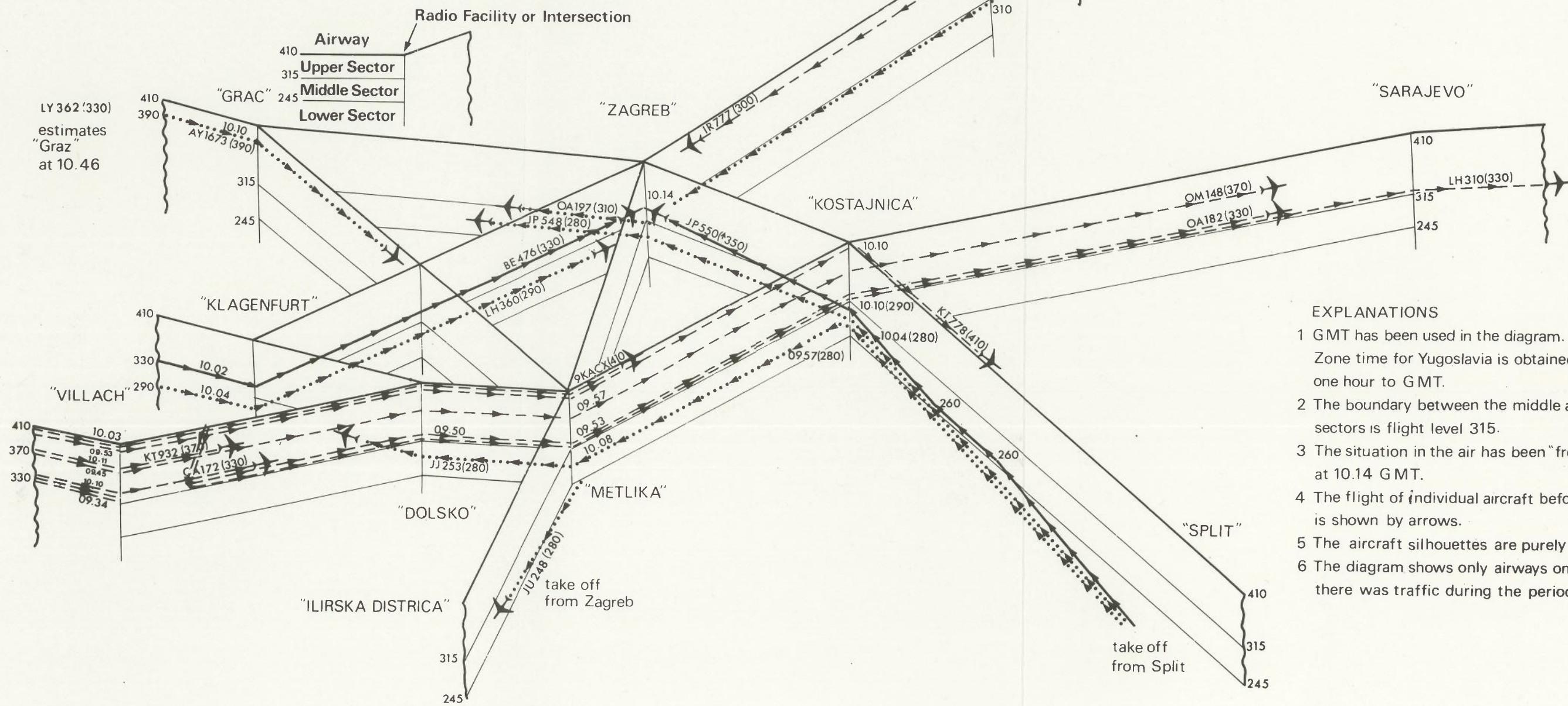
---> 10.14 Time of Overflying Radio Facility

---> Aircraft on Conflicting Courses

.....> Aircraft in Middle Sector

---> Aircraft in Upper Sector

IR1701(390) estimates "Našice" at 10.38
 BA 495(350) estimates "Našice" at 10.27



EXPLANATIONS

- 1 GMT has been used in the diagram. Zone time for Yugoslavia is obtained by adding one hour to GMT.
- 2 The boundary between the middle and upper sectors is flight level 315.
- 3 The situation in the air has been "frozen" at 10.14 GMT.
- 4 The flight of individual aircraft before 10.14 GMT is shown by arrows.
- 5 The aircraft silhouettes are purely illustrative.
- 6 The diagram shows only airways on which there was traffic during the period under review.