

## Air Quality and Dust Monitoring Monthly Report – April 2026 **Buckinghamshire** Council



## Department for Transport

High Speed Two (HS2) Limited has been tasked by the Department for Transport (DfT) with managing the delivery of a new national high speed rail network. It is a non-departmental public body wholly owned by the DfT.

High Speed Two (HS2) Limited,  
Two Snowhill  
Snow Hill Queensway  
Birmingham B4 6GA

Telephone: 08081 434 434

General email enquiries: [HS2enquiries@hs2.org.uk](mailto:HS2enquiries@hs2.org.uk)

Website: [www.gov.uk/hs2](http://www.gov.uk/hs2)

A report prepared by EWCs and MWCCs on behalf of HS2 Ltd.

High Speed Two (HS2) Limited has actively considered the needs of blind and partially sighted people in accessing this document. The text will be made available in full on the HS2 website. The text may be freely downloaded and translated by individuals or organisations for conversion into other accessible formats. If you have other needs in this regard please contact High Speed Two (HS2) Limited.

© High Speed Two (HS2) Limited, 2026, except where otherwise stated.

Copyright in the typographical arrangement rests with High Speed Two (HS2) Limited.

This information is licensed under the Open Government Licence v3.0. To view this licence, visit [www.nationalarchives.gov.uk/doc/open-government-licence/version/3](http://www.nationalarchives.gov.uk/doc/open-government-licence/version/3) **OGI** or write to the Information Policy Team, The National Archives, Kew, London TW9 4DU, or e-mail: [psi@nationalarchives.gsi.gov.uk](mailto:psi@nationalarchives.gsi.gov.uk). Where we have identified any third-party copyright information you will need to obtain permission from the copyright holders concerned.



# Monthly Summary

- 1.1.1 This Summary Report is published in fulfilment of commitments detailed in the High-Speed Rail (London-West Midlands) Environmental Minimum Requirements, Annex 1: Code of Construction Practice, for the nominated undertaker to present the results of dust monitoring undertaken in the Buckinghamshire Council (BC) during April 2026.
- 1.1.2 Figures 1-6 in Appendix A present the current worksites together with the dust monitoring locations.
- 1.1.3 This summary should be read in conjunction with the overview monitoring report available from [www.gov.uk/government/collections/monitoring-the-environmental-effects-of-hs2](http://www.gov.uk/government/collections/monitoring-the-environmental-effects-of-hs2), which highlights the applicable standards and guidance, as well as the air quality and dust monitoring methodologies to be implemented by nominated undertakers throughout construction.
- 1.1.4 The current worksites, as presented in Appendix A, Figures 1-6, include:

## **CVV LTP1 worksite**

- North Embankment Compound: Compound operation;
- DWSC Compound: Compound operation;
- Haul Road: Haul road maintenance;
- ATFS: Permanent drainage, soiling and seeding, ATFS access road construction, slab removal;
- Pumping Water Management;
- Satellite Welfares;
- South Abutment: Drainage works, South Abutment construction stage 2 – earthworks, yard supporting activities, soiling and seeding works, launching girder platform removal;
- Environmental Maintenance;
- Stockpiling Activity HOAC: Stockpile management;
- Deck Finishes Logistics: Preparation and operation of storage yards and installation of below deck access provision, traffic management on the deck surface, delivery of parapets, noise barriers, troughs, pipes, steel works and other minor materials to the storage yards and deck, installation of access at the top of the deck (HAKI stairs) and finishes support plan;
- Deck Finishes – On-deck Construction: North abutment works, deck waterproofing, SFRC slab construction, north embankment and south embankment noise barriers and foundations, noise barrier and concrete panel installation at north embankment, and masking wall installation at north embankment and south embankment;
- Deck Finishes – In-deck Construction: Structural health monitoring;
- Landscaping: Advanced works including removal of cofferdam, initial ground drainage including manhole chamber, landscaping, hardstanding removal and tree removal & vegetation clearance, and streetworks – bellmouth road construction; and

- General site activities.

### **Chalfont St Peter Vent Shaft**

- General Site Activities;
- Road Maintenance Works;
- Ground Level Works (External Works Part 2);
- Building Trades: brickworks and internals; and
- Demobilisation.

### **Amersham Vent Shaft**

- General Site Activities;
- External Works Phases 1&2;
- Precast Boundary Wall;
- Internal Works;
- Steel Works and Zinc Cladding; and
- Land Drainage Works.

### **Chalfont St Giles Vent Shaft**

- General Site Activities;
- Road Maintenance Works;
- External Works Phase 2;
- Building Trades: brickworks and internal works; and
- Demobilisation.

### **Little Missenden Vent Shaft**

- General site activity;
- Tunnel Connection;
- Internal Works;
- Steel Works and Cladding; and
- External Works – Phase 1 and Phase 2.

### **Chesham Vent Shaft**

- General site activity;
- External Works;
- Internal Works;
- Zinc Cladding Works;
- Demobilisation; and
- Landscaping.

### **North Portal work site**

- General Plant: Site Activities;
- Tracks Platform;

- Piling Platform Reinstatement;
- Porous Portal Structure;
- North Portal Building;
- Tunnel Support: Batching Plant operation and concrete distribution and tunnel walkway slip forming; and
- Tracks Drainage and Utilities.

### **South Heath**

- South Heath Earthworks & Drainage: Cutting and landscaping;
- General Earthworks: Site operations & support vehicles, stockpile management, surface water management, compounds and general maintenance;
- South Heath drainage: Earthworks for track drainage, stockpile and landscaping bunds drainage and collection chamber construction;
- Utilities: Excavation and construction, installation of utilities and connection of new utilities;
- Great Missenden Compound: Plant and compound maintenance, utilities work and site security at Great Missenden round-about;
- GMI/2 Overbridge: Site security, construction of FRC structure, deck finishes and cutting finishes;
- GMI/12 Overbridge: Site security, excavation & pile cropping, construction of FRC structure, deck finishes and cutting finishes;
- Ground Investigation Works: Borehole drilling, geo-physical investigations and ground investigation and mitigation;
- Site Access Road and Mass Haul Route construction and maintenance: lime spreading and tarmac & concrete surfacing; and
- Road utilisation: SAR utilisation and MHR utilisation.

### **North Chilterns to Aylesbury Area**

#### Chesham Lane, Wendover Bus 55

##### Rocky Lane Culvert

- Completed spray applied waterproofing to the top of the culvert
- Completed mammal shelf and protection slab in-situ concrete works
- Continued repairs to concrete surfaces

##### Bowood Lane Overbridge

- Saw cutting and breaking out blinding under the bridge
- Commenced the blockwork retaining wall at A0

##### Bowood Lane realignment

- Commenced the tarmac and concrete removal in preparation for the realignment works.

##### C2.T.5 Drainage

- POI-036 installed - lid still outstanding
- POI-024 installed and 900mm pipe towards C2.T.5-POI-023 begun

#### Grove Farm Underbridge:-

- Blackwell Backfill to commence the construction of the new haul road

#### Grove Farm Attenuation Tank

- Erecting the scaffold access around the attenuation tank
- Installation of the Roof Slabs
- Installation of the penstock and hydro brake

#### Grove Farm Culvert

- Back grouting of the completed rings 42 rings
- TBM removal at POI-001

#### Wendover Compound

##### Wendover Dean Viaduct

- Striking propping Bays 1, 2, 3 & 4
- Top deck pour 10 - reinforcement/carpentry completed
- Top deck pour 10 - Pour completed
- Traveller moved to pour 11 position
- Top deck pour 11 - reinforcement/carpentry completed
- Top deck pour 11 - Pour completed
- Removing struck propping on the top deck with crane,
- Continuing sealing top planks
- Coring top planks for drainage preparation ongoing.

#### **Calvert Area**

##### Quainton

- Earthworks - Ongoing
- Utility diversions.
- Station Road Realignment (East tie-in) – de-vegetation, old tarmac removal.

##### Woodlands

- Woodlands Cutting – Dig & Replace.
- Woodland Drop Inlet Culvert works.
- Adamas Accommodation – Technical backfill and back of wall drainage.
- Aggregate deliveries along the SAR.

##### FCC / School Hill (Calvert)

- School Hill batching plant – production of concrete.
- School Hill Overbridge – FRC works.

- School Hill Road Realignment – VacEx for utilities
- Calvert Green overbridge – FRC works.
- Aggregate deliveries along the site access road (SAR).
- Calvert Cutting earthworks – drainage and general maintenance activities.
- CBGM batching plant – production of CBGM.

Other works ongoing in Calvert not within proximity (greater than 1km) to dust monitors include:

- West Street overbridge
- Portway culvert
- Perry Hill overbridge
- EWR culvert
- IMD West culvert
- IMD East Culvert
- Shepherds Furze earthworks (stockpile maintenance)
- Shepherds Furze culvert
- MCJ4 chord earthworks
- Infrastructure maintenance depot (IMD) earthworks
- Secant retaining wall
- Bat mitigation structure
- SCL/13 overbridge
- FCC Cell 6 earthworks (stockpile maintenance)
- FCC Access Road Retaining Wall
- Sheephouse Wood North culvert
- Greatmoor no. 4 culvert and CAG2 underbridge
- Megaditch retaining wall
- Greatmoor no. 3 culvert
- GUN28 overbridge
- QUA36 overbridge
- Hills farm earthworks (stockpile maintenance)
- Edgcott Road overbridge
- QUA26 Underbridge
- Doddershall Embankment earthworks
- Doddershall No. 6 and No. 7 Culvert
- Quainton cutting
- QUA28 overbridge
- Station Road overbridge
- Station Road Network Rail overbridge.

1.1.5 Twenty-five (25) dust monitors are installed around these worksites, where works are underway. These sites returned a medium dust risk rating.

1.1.6 Dust monitoring locations and results are presented in Appendix B, Table 2, together with line charts of monthly data from each dust monitor presented in Figure 7. All continuous

dust monitoring is undertaken using indicative monitors. Despite being Environment Agency (MCERTS) certified, indicative monitors carry a higher level of uncertainty than reference monitors, and therefore cannot be strictly compared with Air Quality Standards for human health and the environment. The purpose of the monitoring undertaken is to ensure the effectiveness of the on-site mitigation.

1.1.7 The trigger level for PM<sub>10</sub> concentrations of 190 µg/m<sup>3</sup>, measured as a 1-hour mean, in accordance with the updated guidance document '*Guidance on Monitoring in the Vicinity of Demolition and Construction Sites – (December 2018)*' has been applied.

1.1.8 No (0) dust trigger alerts were recorded during the monitoring period (April 2026).

1.1.9 Data capture was below 90% for multiple monitors due to:

- Chesham Lane dust monitor was reinstalled on 13th April 2026.
- Ellesborough Road dust monitor was reinstalled on 13th April 2026.
- Bacombe Lane dust monitor was reinstalled on 13th April 2026.
- Turweston East dust monitor was installed on 16th April 2026.
- CHStP-AQMP1a and CHStG-AQMP2 are due to power being removed from the site. Align have yet to relocate and supply power to CHStP-AQMP1 and CHStG-AQMP2.
- CR-AQMP1 suffered from sporadic connectivity issues from the 7-10<sup>th</sup> of April.
- SH-AQMP2 suffered from sporadic connectivity issues from the 17-20<sup>th</sup> of April

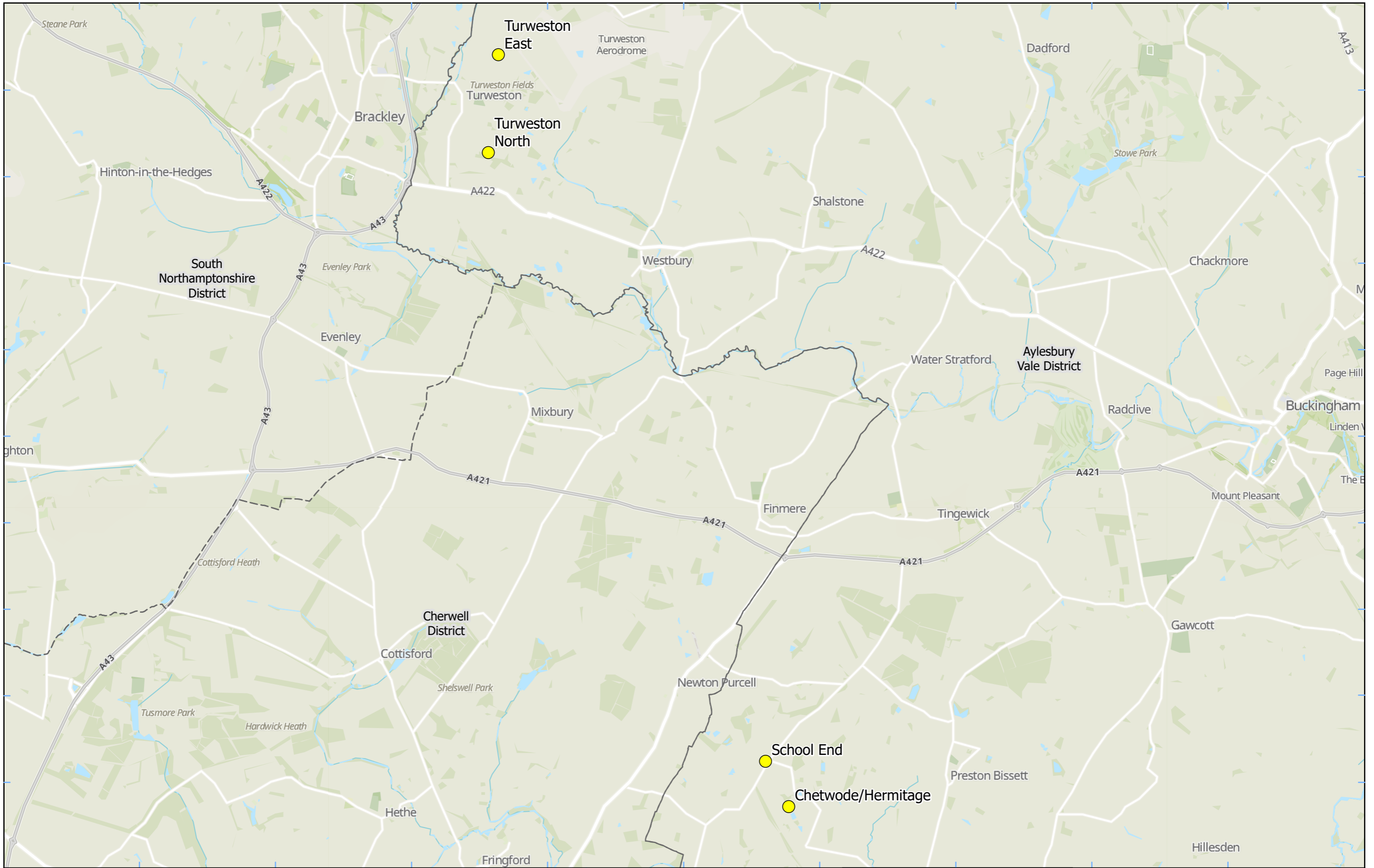
1.1.10 Table 1 provides a summary of the complaint information relating to dust or air quality received during the reporting period, together with the findings of any related investigations.

Table 1: Summary of complaints received during April 2026

| Complaint Reference No. | Worksite Reference | Description of complaint                             | Results of investigation   |
|-------------------------|--------------------|--|--|
| HS2-26-47339-C          | N/A                | An increased amount of chalk dust all over property. | Nearby monitors checked and no breaches have been recorded. Engagement team visited property to assist with investigation, dust related to weather conditions and recent rainfall as the property is some considerable distance from the nearest site. |

# Appendix A – Worksite and Dust Monitoring Locations

Figures 1-7: Worksite and Monitoring locations within BC



**Legend**

- Dust Monitor
- District Borough Unitary Boundaries

Service Layer Credits: GB Topographic: Contains OS data © Crown Copyright and database right 2025  
Contains data from OS Zoomstack

Map Number

Map Name  
**Monitoring Locations  
In BC (Sheet 1)**

**Buckinghamshire County**

HS2 Ltd accept no responsibility for any circumstances, which arise from the reproduction of this map after alteration, amendment or abbreviation or if it is issued in part or issued incomplete in any way.

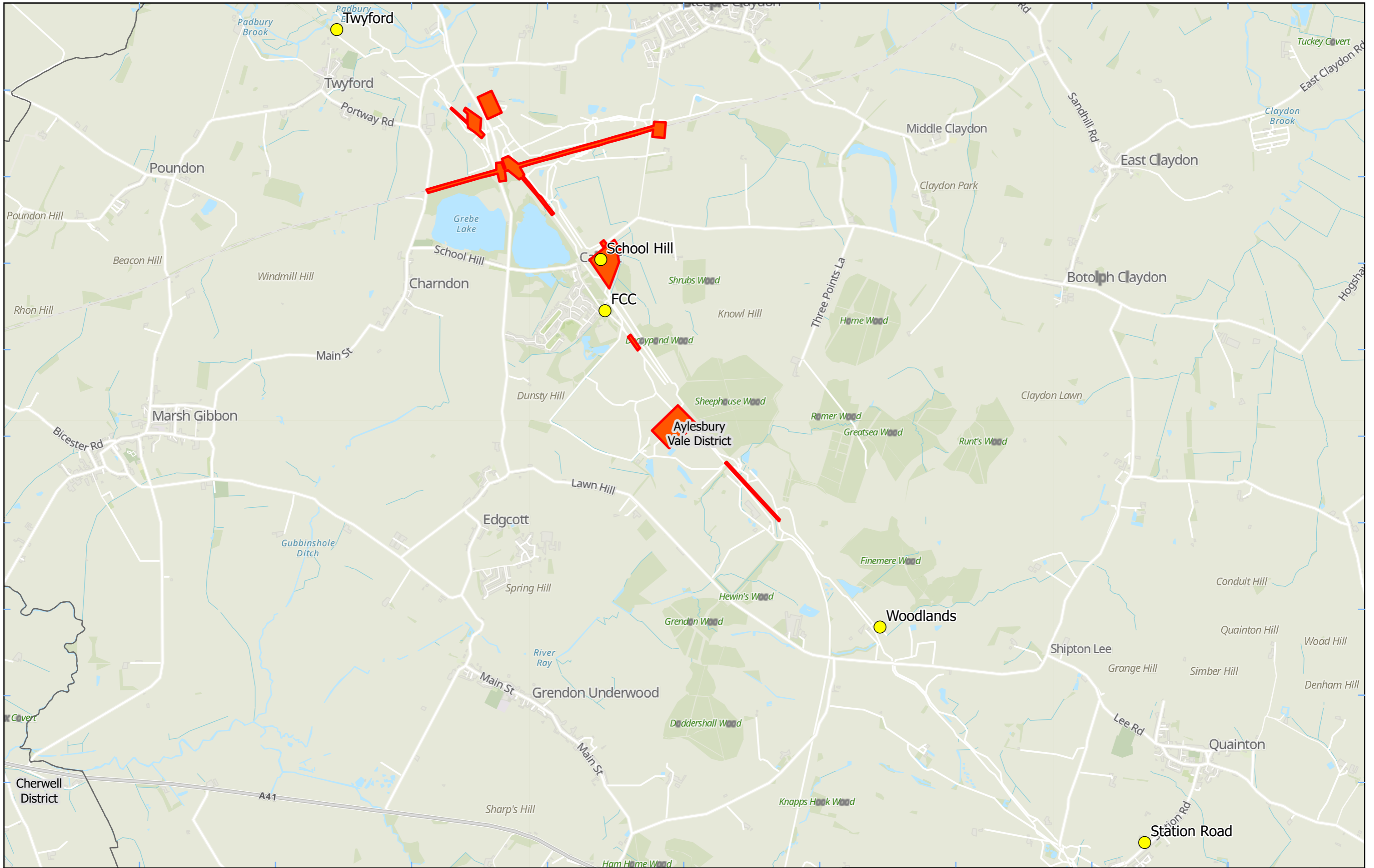
Registered in England. Registration number 06791686.  
Registered office: 2 Snowhill, Queensway, Birmingham B4 6GA.

© Crown copyright and database rights 2025.  
Ordnance Survey Licence Number 100049190.

Scale at A3: 1:40,000

Metres

Doc Number: **Date: 10/07/25**



**Legend**

- Dust monitor
- District Borough Unitary Boundaries
- Worksite

Service Layer Credits: GB Topographic: Contains OS data © Crown Copyright and database right 2025  
Contains data from OS Zoomstack

Map Number

Map Name  
**Worksite & Monitoring Locations  
In BC (Sheet 2)**

**Buckinghamshire County**

**hs2**

HS2 Ltd accept no responsibility for any circumstances, which arise from the reproduction of this map after alteration, amendment or abbreviation or if it is issued in part or issued incomplete in any way.

Registered in England. Registration number 06791686.  
Registered office: 2 Snowhill, Queensway,  
Birmingham B4 6GA.

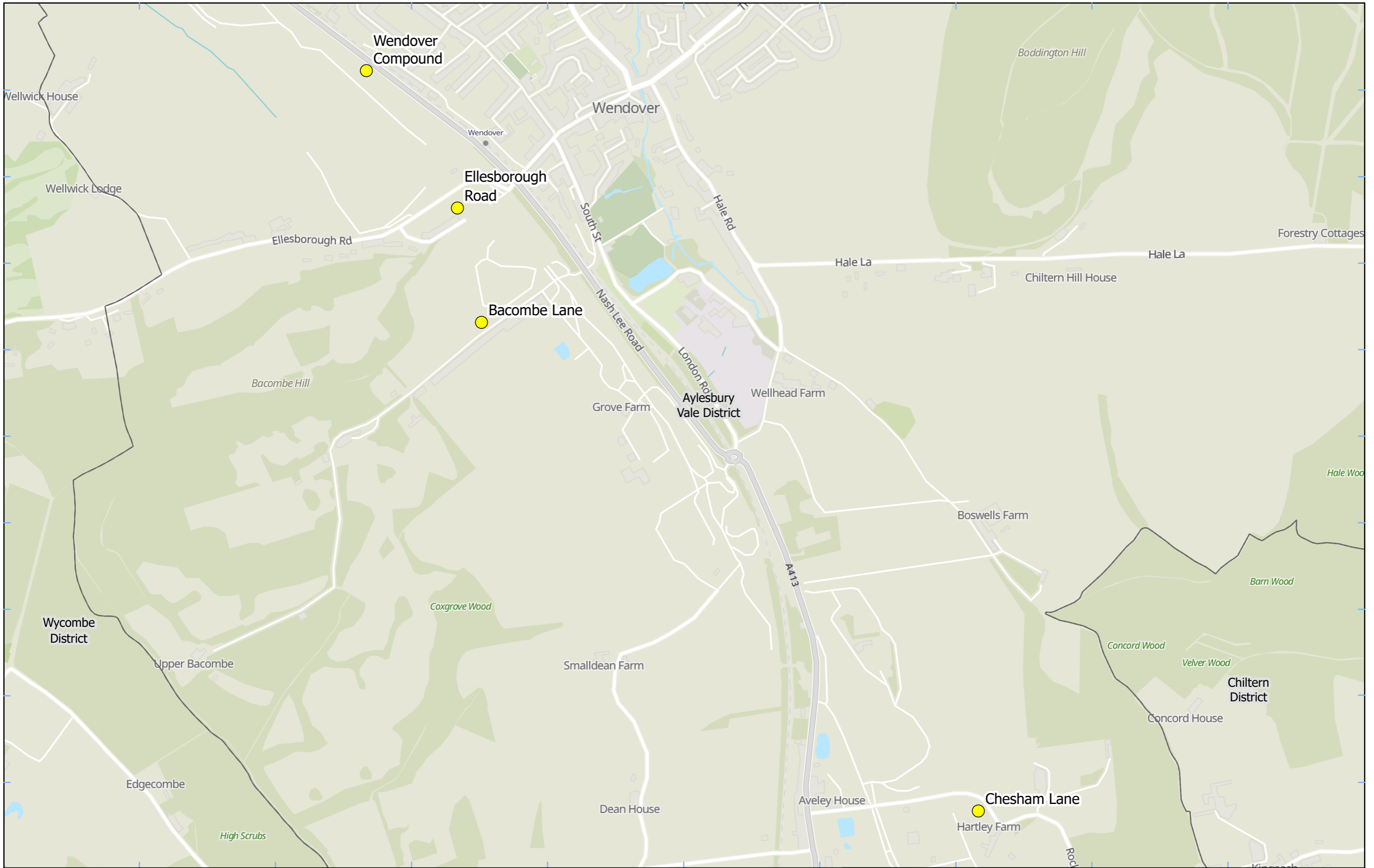
© Crown copyright and database rights 2025.  
Ordnance Survey Licence Number 100049190.

Scale at A3: 1:32,000

0 330 660 990 1,320  
Metres

**Doc Number:**

**Date: 10/07/25**



**Legend**

- Dust Monitor
- District Borough Unitary Boundaries

Service Layer Credits: GB Topographic: Contains OS data © Crown Copyright and database right 2026.  
Contains data from OS Zoomstack

Map Number

Map Name

**Monitoring Locations  
In BC (Sheet 3)**

**Buckinghamshire County**

HS2 Ltd accept no responsibility for any circumstances, which arise from the reproduction of this map after alteration, amendment or abbreviation or if it is issued in part or issued incomplete in any way.

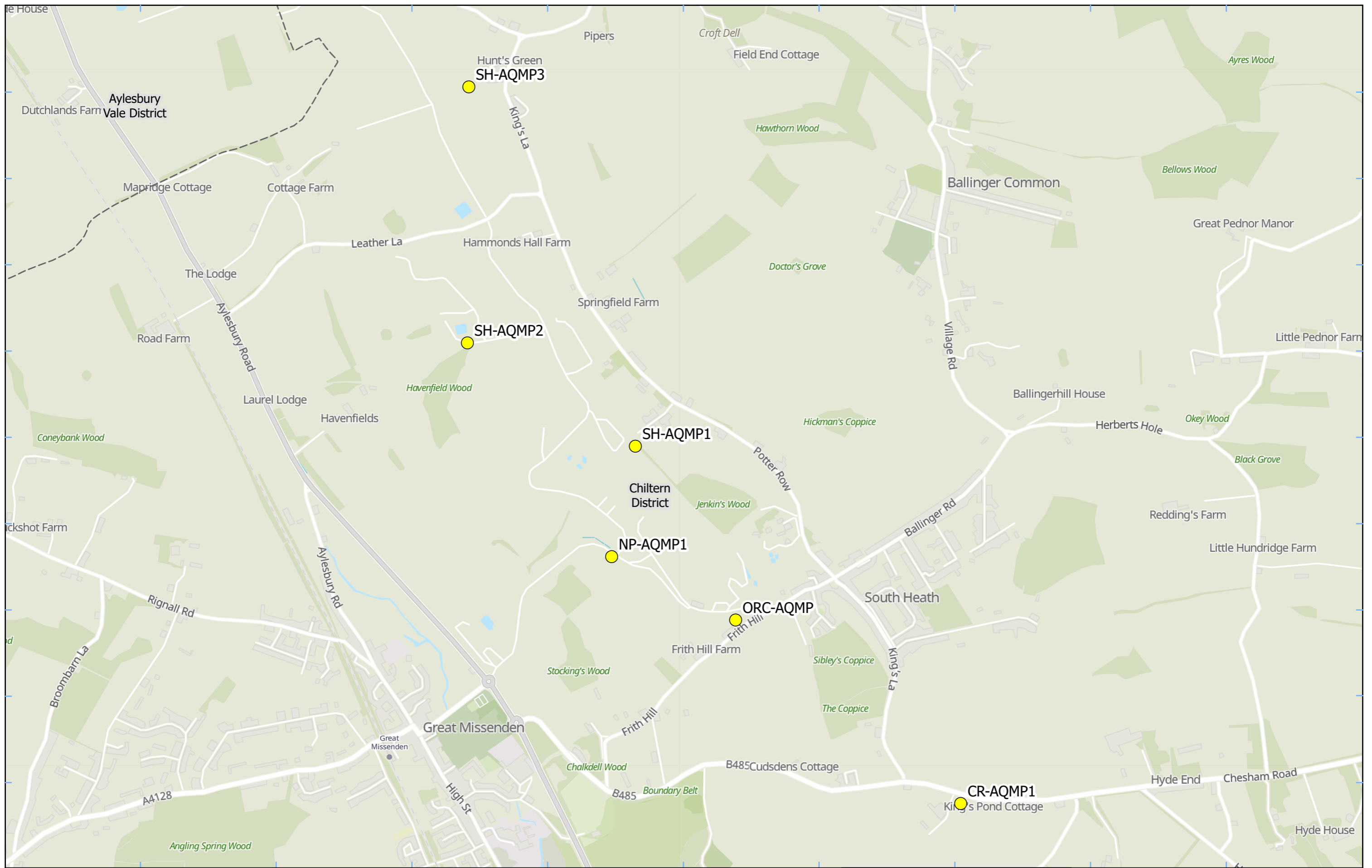
Registered in England. Registration number 06791686.  
Registered office: 2 Snowhill, Queensway,  
Birmingham B4 6GA.

© Crown copyright and database rights 2026.  
Ordnance Survey Licence Number 100049190.

Scale at A3: 1:10,000

Metres

Doc Number: **Date: 28/04/26**



**Legend**

- Dust Monitor
- District Borough Unitary Boundaries

Service Layer Credits: GB Topographic: Contains OS data © Crown Copyright and database right 2026. Contains data from OS Zoomstack

Map Number

Map Name  
**Monitoring Locations  
In BC (Sheet 4)**

**Buckinghamshire County**

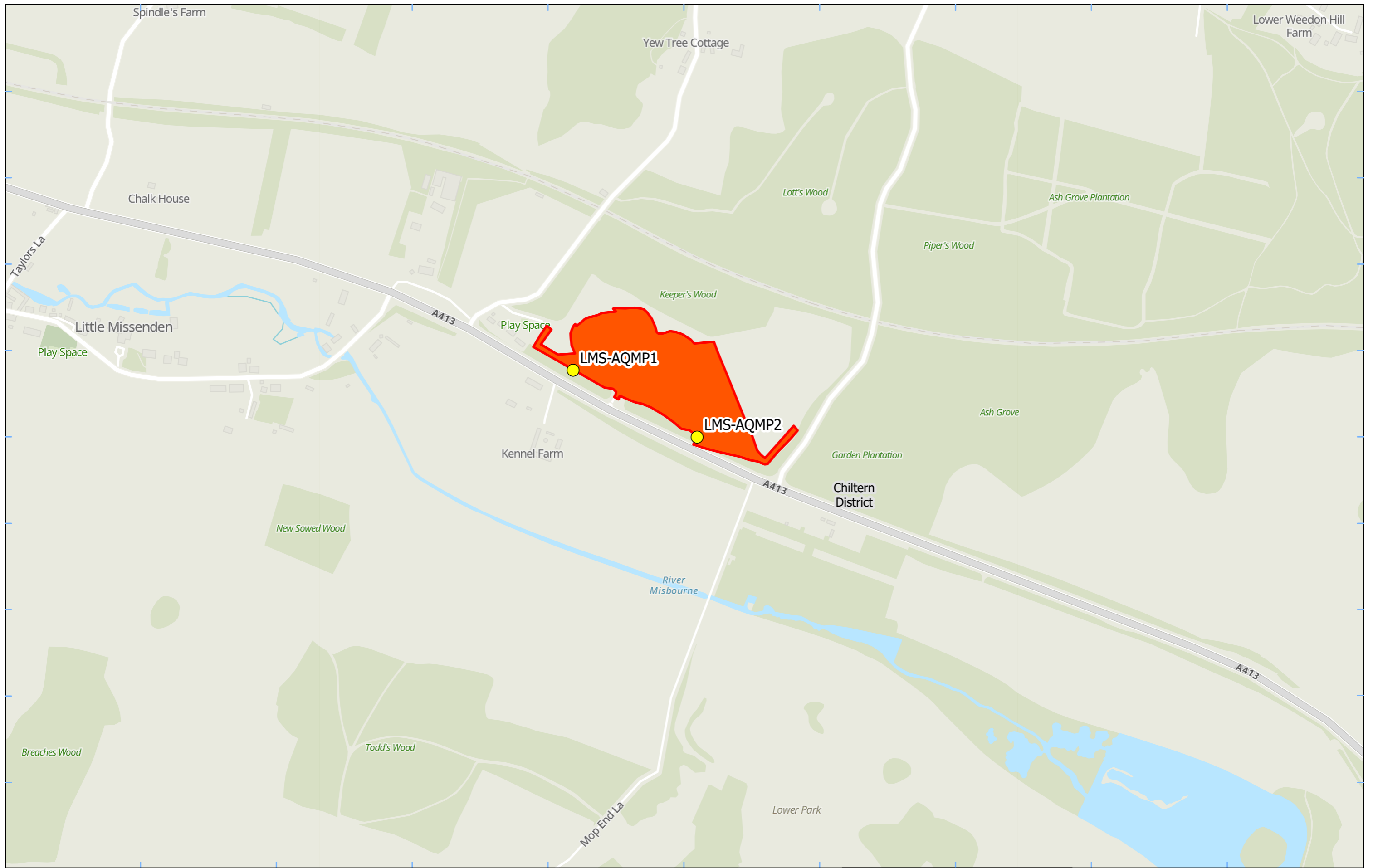
HS2 Ltd accept no responsibility for any circumstances, which arise from the reproduction of this map after alteration, amendment or abbreviation or if it is issued in part or issued incomplete in any way.

Registered in England. Registration number 06791686.  
Registered office: 2 Snowhill, Queensway, Birmingham B4 6GA.

© Crown copyright and database rights 2026.  
Ordnance Survey Licence Number 100049190.

Scale at A3: 1:12,000

Doc Number: **Date: 28/04/26**




**Legend**

- Dust Monitor
- District Borough Unitary Boundaries
- Worksite

Service Layer Credits: GB Topographic: Contains OS data © Crown Copyright and database right 2026. Contains data from OS Zoomstack

|   |   |
|---|---|
| Map Number<br><br>Map Name<br><b>Worksite and Monitoring Locations<br/>         In BC (Sheet 5)</b> | Map Number<br><br>Map Name<br><b>Worksite and Monitoring Locations<br/>         In BC (Sheet 5)</b> |
| <b>Buckinghamshire County</b>   |   |




Registered in England. Registration number 06791686.  
 Registered office: 2 Snowhill, Queensway,  
 Birmingham B4 6GA.

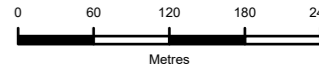
© Crown copyright and database rights 2026.  
 Ordnance Survey Licence Number 100049190.

**Doc Number:**

HS2 Ltd accept no responsibility for any circumstances, which  
 arise from the reproduction of this map after alteration,  
 amendment or abbreviation or if it is issued in part or issued  
 incomplete in any way.

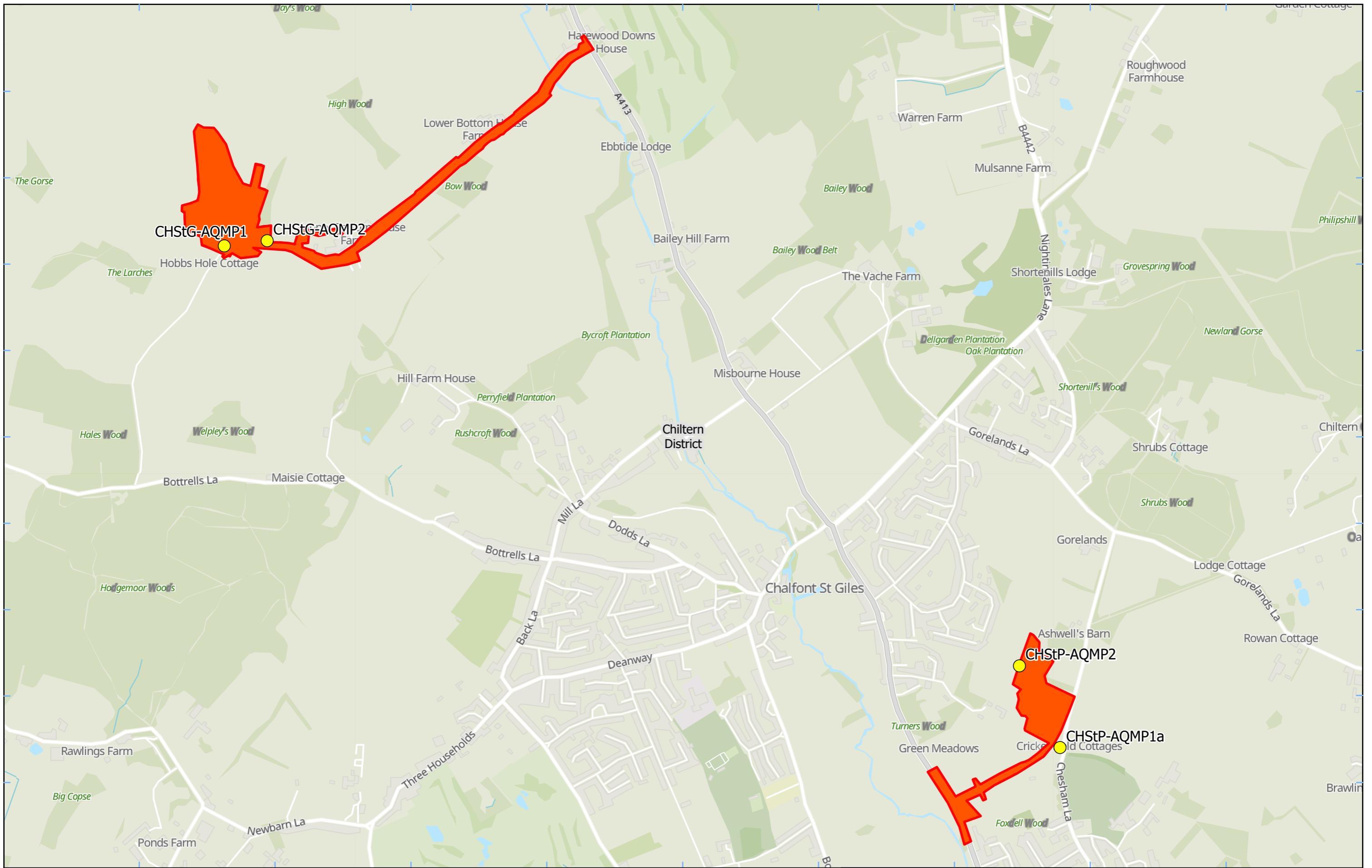


**Scale at A3: 1:6,000**



0 60 120 180 240  
Metres

**Date: 28/04/26**



**Legend**

- Dust Monitor
- District Borough Unitary Boundaries
- Worksite

Service Layer Credits: GB Topographic: Contains OS data © Crown Copyright and database right 2025  
Contains data from OS Zoomstack

Map Number

---

Map Name  
**Worksite and Monitoring Locations  
In BC (Sheet 6)**

---

**Buckinghamshire County**

**hs2**

HS2 Ltd accept no responsibility for any circumstances, which arise from the reproduction of this map after alteration, amendment or abbreviation or if it is issued in part or issued incomplete in any way.

Registered in England. Registration number 06791686.  
Registered office: 2 Snowhill, Queensway,  
Birmingham B4 6GA.

Scale at A3: 1:12,000

0 120 240 360 480  
Metres

© Crown copyright and database rights 2025.  
Ordnance Survey Licence Number 100049190.

Doc Number: Date: 10/07/25

## Appendix B – Dust Monitoring Results

Table 2: Dust Monitoring Locations and Results

| Monitoring site ID | Coordinates (X,Y) | Location description   | Dust risk rating for site | Monitoring site active during period | Change to site since previous period report | Mean 1-hour PM <sub>10</sub> concentration (µg/m <sup>3</sup> ) | Minimum 1-hour PM <sub>10</sub> concentration (µg/m <sup>3</sup> ) | Maximum 1-hour PM <sub>10</sub> concentration (µg/m <sup>3</sup> ) | Number of 1-hour periods exceeding trigger level of 190 µg/m <sup>3</sup> | Data capture (%) |
|--------------------|-------------------|--|---------------------------|--------------------------------------|---|---|--|--|---|------------------|
| CHStP-AQMP1a       | 500093, 192996    | Relocated from CHStP-NMP1 to site-boundary outside residence | M                         | Yes                                  | Yes   | -   | -  | -  | -   | -                |
| CHStP-AQMP2        | 499951, 193282    | On the western boundary of the site                          | M                         | Yes                                  | Yes   | 8.3   | 4.8  | 31.5   | 0   | 99.4             |
| CHStG-AQMP1        | 497170, 194752    | On the southern boundary close to Hobbs Hole Cottage         | M                         | Yes                                  | Yes   | 5.7   | 1.0  | 22.0   | 0   | 100.0            |
| CHStG-AQMP2        | 497320, 194770    | On southern boundary next to carpark                         | M                         | Yes                                  | Yes   | -   | -  | -  | -   | -                |
| LMS-AQMP1          | 493190, 198848    | On the south-west of the site                                | M                         | Yes                                  | Yes   | 8.1   | 1.0  | 64.0   | 0   | 98.5             |
| LMS-AQMP2          | 493407, 198731    | On the south-east of the site                                | M                         | Yes                                  | Yes   | 6.1   | 1.0  | 28.0   | 0   | 98.1             |
| CR-AQMP1           | 491291, 201143    | On the Chesham Road Vent Shaft                               | M                         | Yes                                  | Yes   | 6.2   | 1.0  | 26.0   | 0   | 88.2             |
| ORC-AQMP           | 490503, 201786    | Orchard Cottage South-eastern Site Boundary                  | M                         | Yes                                  | Yes   | 6.6   | 1.0  | 29.0   | 0   | 100.0            |
| NP-AQMP1           | 490069, 202008    | North Portal Site Entrance                                   | M                         | Yes                                  | Yes   | 6.9   | 0.1  | 40.0   | 0   | 99.6             |
| SH-AQMP1           | 490152, 202395    | Park Farm  | M                         | Yes                                  | Yes   | 9.2   | 6.9  | 39.0   | 0   | 99.4             |

| Monitoring site ID             | Coordinates (X,Y) | Location description            | Dust risk rating for site | Monitoring site active during period | Change to site since previous period report | Mean 1-hour PM <sub>10</sub> concentration (µg/m <sup>3</sup> ) | Minimum 1-hour PM <sub>10</sub> concentration (µg/m <sup>3</sup> ) | Maximum 1-hour PM <sub>10</sub> concentration (µg/m <sup>3</sup> ) | Number of 1-hour periods exceeding trigger level of 190 µg/m <sup>3</sup> | Data capture (%) |
|--------------------------------|-------------------|---------------------------------|---------------------------|--------------------------------------|---|---|--|--|---|------------------|
| SH-AQMP2                       | 489564, 202757    | King's Lane                     | M                         | Yes                                  | Yes   | 4.1   | 0.1  | 37.8   | 0   | 87.1             |
| SH-AQMP3                       | 489569, 203654    | Leather Lane                    | M                         | Yes                                  | Yes   | 22.0  | 7.6  | 77.0   | 0   | 99.4             |
| School Hill (CAL-AQMP2) - Dust | 469003, 224740    | School Hill Compound            | M                         | Yes                                  | Yes   | 7.0   | 1.0  | 31.0   | 0   | 99.6             |
| School End - Dust              | 463666, 230049    | School End, Chetwode            | M                         | Yes                                  | Yes   | 7.4   | 1.0  | 40.0   | 0   | 99.9             |
| Chesham Lane - Dust            | 487974, 205794    | Chesham Lane, The Lee, Wendover | M                         | Yes                                  | Yes   | 6.3   | 1.0  | 21.0   | 0   | 57.8             |
| Twyford - Dust                 | 466544, 226883    | Twyford, Buckinghamshire        | M                         | Yes                                  | Yes   | 8.5   | 1.0  | 72.0   | 0   | 99.6             |
| Chetwode/Hermitage - Dust      | 463936, 229521    | Hermitage, Chetwode             | M                         | Yes                                  | Yes   | 19.8  | 3.0  | 86.0   | 0   | 100.0            |
| Turweston North - Dust         | 460439, 237140    | Turweston, Buckinghamshire      | M                         | Yes                                  | Yes   | 6.8   | 1.0  | 27.0   | 0   | 99.9             |
| Turweston East - Dust          | 460556, 238280    | Turweston, Buckinghamshire      | M                         | Yes                                  | Yes   | 4.8   | 1.0  | 21.0   | 0   | 48.5             |
| FCC - Dust                     | 469042, 224263    | Adjacent Red Kite View, Calvert | M                         | Yes                                  | Yes   | 7.2   | 1.0  | 32.0   | 0   | 100.0            |
| Ellesborough Road - Dust       | 486458, 207550    | Ellesborough Road, Wendover     | M                         | Yes                                  | Yes   | 7.2   | 1.0  | 22.0   | 0   | 57.8             |
| Bacombe Lane - Dust            | 486528, 207217    | Bacombe Lane, Wendover          | M                         | Yes                                  | Yes   | 6.2   | 1.0  | 20.0   | 0   | 57.2             |
| Station Road - Dust            | 474068, 219307    | Station Road, Quainton          | M                         | Yes                                  | Yes   | 7.0   | 1.0  | 47.0   | 0   | 99.9             |
| Wendover Compound- Dust        | 486193, 207950    | Wendover Bypass, Wendover       | M                         | Yes                                  | Yes   | 6.6   | 1.0  | 20.0   | 0   | 99.9             |
| Woodlands - Dust               | 471603, 221315    | Station Rd, Quainton,           | M                         | Yes                                  | Yes   | 6.7   | 1.0  | 68.0   | 0   | 97.8             |

| Monitoring site ID | Coordinates (X,Y) | Location description | Dust risk rating for site | Monitoring site active during period | Change to site since previous period report | Mean 1-hour PM <sub>10</sub> concentration (µg/m <sup>3</sup> ) | Minimum 1-hour PM <sub>10</sub> concentration (µg/m <sup>3</sup> ) | Maximum 1-hour PM <sub>10</sub> concentration (µg/m <sup>3</sup> ) | Number of 1-hour periods exceeding trigger level of 190 µg/m <sup>3</sup> | Data capture (%) |
|--------------------|-------------------|----------------------|---------------------------|--------------------------------------|---|---|--|--|---|------------------|
|                    |                   | Woodlands Farmhouse  |                           |                                      |   |   |  |  |   |                  |

Figure 7: Continuous dust 1-hour mean indicative PM<sub>10</sub> concentration for all dust monitors

