

Air Quality and Dust Monitoring Monthly Report – March 2026

North Warwickshire Borough Council



Department for Transport

High Speed Two (HS2) Limited has been tasked by the Department for Transport (DfT) with managing the delivery of a new national high speed rail network. It is a non-departmental public body wholly owned by the DfT.

High Speed Two (HS2) Limited,
Two Snowhill
Snow Hill Queensway
Birmingham B4 6GA

Telephone: 08081 434 434


General email enquiries: HS2enquiries@hs2.org.uk

Website: www.gov.uk/hs2

A report prepared by EWCs and MWCCs on behalf of HS2 Ltd.

High Speed Two (HS2) Limited has actively considered the needs of blind and partially sighted people in accessing this document. The text will be made available in full on the HS2 website. The text may be freely downloaded and translated by individuals or organisations for conversion into other accessible formats. If you have other needs in this regard please contact High Speed Two (HS2) Limited.

© High Speed Two (HS2) Limited, 2026, except where otherwise stated. Copyright in the typographical arrangement rests with High Speed Two (HS2) Limited.

This information is licensed under the Open Government Licence v3.0. To view this licence, visit www.nationalarchives.gov.uk/doc/open-government-licence/version/3  or write to the Information Policy Team, The National Archives, Kew, London TW9 4DU, or e-mail: psi@nationalarchives.gsi.gov.uk. Where we have identified any third-party copyright information you will need to obtain permission from the copyright holders concerned.



Monthly Summary

- 1.1.1 This Summary Report is published in fulfilment of commitments detailed in the High Speed Rail (London-West Midlands) Environmental Minimum Requirements, Annex 1: Code of Construction Practice, for the nominated undertaker to present the results of air quality and dust monitoring undertaken in North Warwickshire Borough Council (NWBC) during March 2026.
- 1.1.2 Figure 1 in Appendix A present the current worksites together with the dust monitoring locations.
- 1.1.3 This summary should be read in conjunction with the overview monitoring report monthly available from www.gov.uk/government/collections/monitoring-the-environmental-effects-of-hs2, which highlights: the applicable standards and guidance, as well as the air quality and dust monitoring methodologies to be implemented by nominated undertakers throughout construction.
- 1.1.4 The current worksites, as presented in Figure 1 and Figure 2, include:

Sublot 6BS

Gilson Embankment

- Gilson Road retaining wall.
- Drainage works.
- Coleshill platform construction.
- Piezometer installation.

Attleboro Lane Overbridge

- S1 & S2 drainage ditch construction.
- Technical backfill – retaining wall segments.

Sublot 7

Faraday Avenue Embankment and Underbridge

- W01 Deck – Span 21 to 24 segments erected.
- W02 Deck – Span 20 to 23 segments erected.

Marston Box

- No BBV works activities occurred during March 2026.

Sublot 6NC

- High Speed Rail (HSR) embankment fill.
- Dig and replace fill.

- Haul road maintenance.

Sublot 5N

Chattle Hill Box Structure

- No BBV works activities occurred during March 2026.

- 1.1.5 Seven (7) dust monitors are installed around these worksites, where works are underway. These sites returned a low to medium dust risk rating.
- 1.1.6 Dust monitoring locations and results are presented in Appendix B, Table 2, together with line charts of monthly data from each dust monitor presented in Figure 2. All continuous dust monitoring is undertaken using indicative monitors. Despite being Environment Agency (MCERTS) certified, indicative monitors carry a higher level of uncertainty than reference monitors, and therefore cannot be strictly compared with Air Quality Standards for human health and the environment. The purpose of the monitoring undertaken is to ensure the effectiveness of the on-site mitigation.
- 1.1.7 The trigger level for PM₁₀ concentrations of 190 µg/m³, over a 1-hour period, in accordance with the updated guidance document '*Guidance on Monitoring in the Vicinity of Demolition and Construction Sites – (October 2018)*' has been applied.
- 1.1.8 Details of the trigger alert investigations and remediations are presented in Appendix B, Table 3.
- 1.1.9 Data capture was below 90% for multiple monitors due to:
- Monitor AFE002 – A battery refresh was done on 6th March 2026, and a fault investigation site visit was done on 12th March 2026. A monitor swap out is currently scheduled for 24th April 2026.
 - Monitor BRD001 – A fault investigation site visit was done on 6th March 2026, a monitor swap out was done on 12th March 2026, and a battery refresh was done on 26th March 2026. A field calibration is currently scheduled for 23rd April 2026.
 - Monitor CHBS001 – A monitor swap out was done on 24th March 2026. A field calibration is currently scheduled for 15th April 2026.
- 1.1.10 Table 1 provides a summary of the complaint information relating to dust or air quality received during the reporting period, together with the findings of any related investigations.

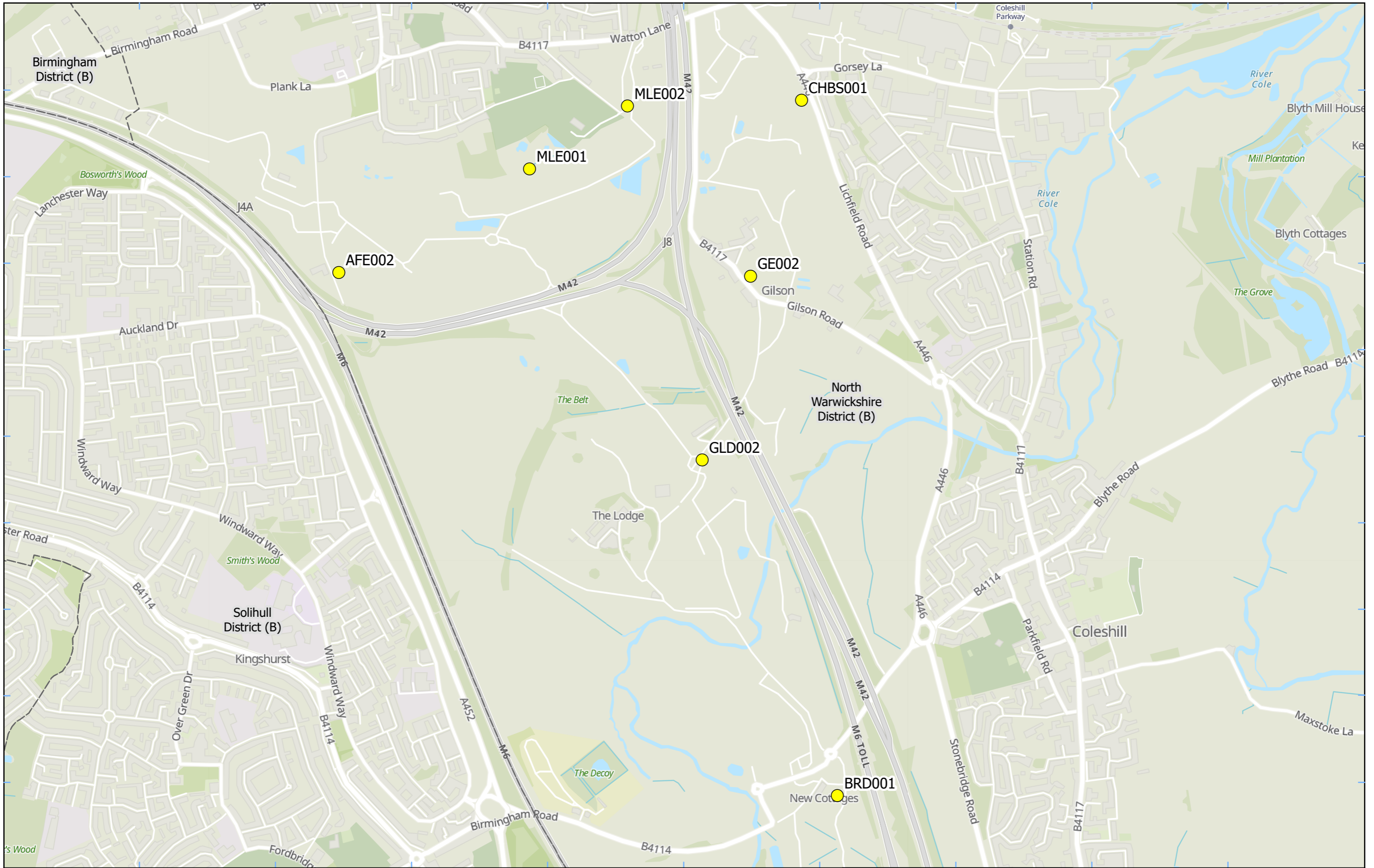
Table 1: Summary of complaints received during March 2026

Complaint Reference No.	Worksite Reference	Description of complaint	Results of investigation
HS2-26-47139-C	N/A	Health concerns due to HS2 works.	Exempt from complaints procedure relates to personnel injury.

Appendix A – Worksites and Monitoring Locations

Figure 1: Worksites and Monitoring Locations within NWBC





Legend

- Dust Monitor
- District Borough Unitary Boundaries

Service Layer Credits: GB Topographic: Contains OS data © Crown Copyright and database right 2026. Contains data from OS Zoomstack

Map Number

Map Name
**Monitoring Locations
In NWBC (Sheet 2)**

North Warwickshire Borough

hs2

HS2 Ltd accept no responsibility for any circumstances, which arise from the reproduction of this map after alteration, amendment or abbreviation or if it is issued in part or issued incomplete in any way.

Registered in England. Registration number 06791686.
Registered office: 2 Snowhill, Queensway,
Birmingham B4 6GA.

© Crown copyright and database rights 2026.
Ordnance Survey Licence Number 100049190.

Scale at A3: 1:12,000

0 120 240 360 480
Metres

Doc Number:

Date: 28/04/26

Appendix B – Dust Monitoring Results

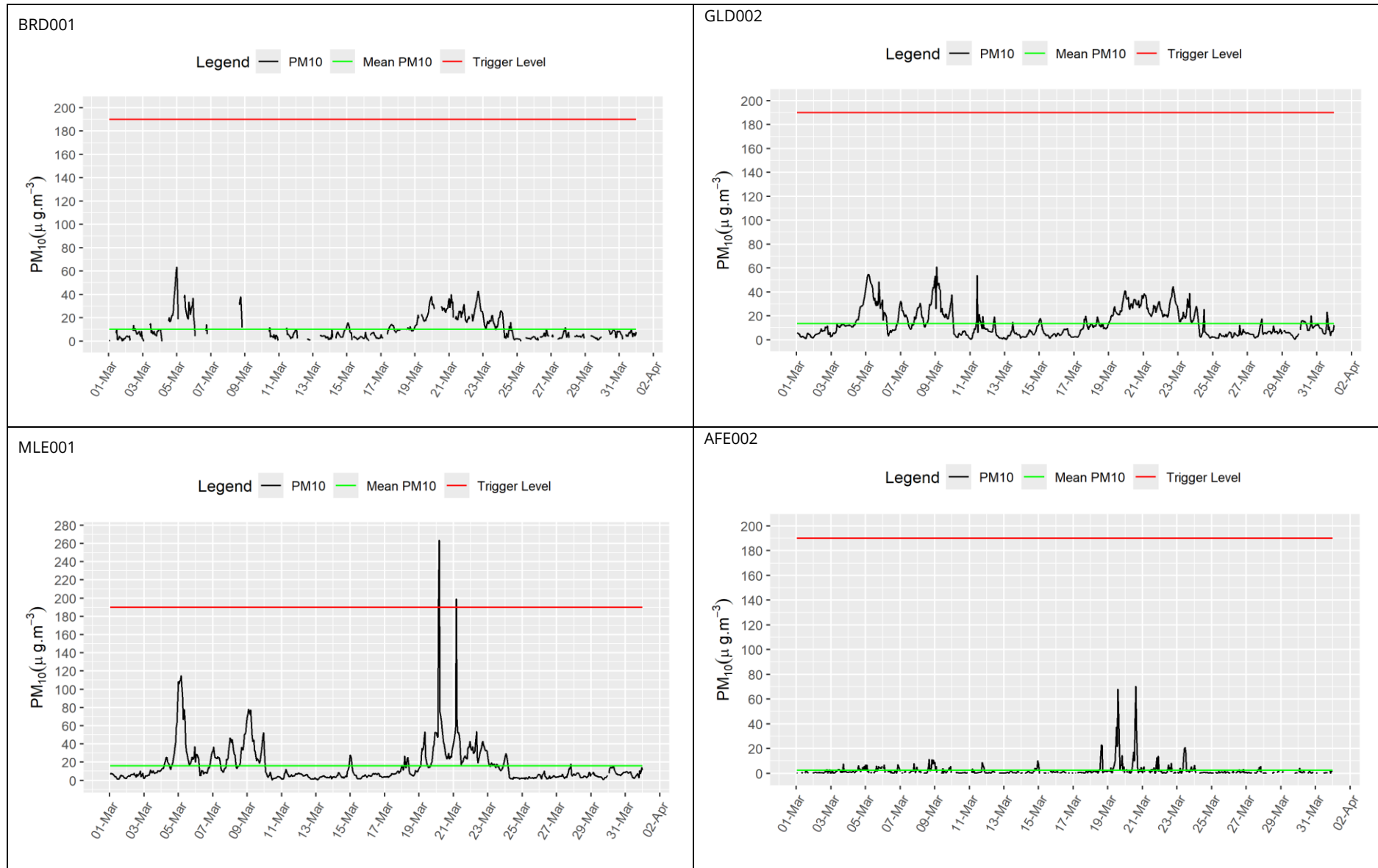
Table 2: Dust Monitoring Locations and Results

Monitoring site ID	Coordinates (X,Y)	Location description	Dust risk rating for site	Monitoring site active during period	Change to site since previous period report	Mean 1-hour PM ₁₀ concentration (µg/m ³)	Minimum 1-hour PM ₁₀ concentration (µg/m ³)	Maximum 1-hour PM ₁₀ concentration (µg/m ³)	Number of 1- hour periods exceeding trigger level of 190 µg/m ³	Data capture (%)
BRD001	419262, 288328	New Cottage, Birmingham Road, Coleshill	L	Yes	No	10.0	0.1	63.4	0	76.5
GLD002	418807, 289570	Gilson Drive	L	Yes	No	13.6	0.2	61.0	0	99.7
MLE001	418205, 290509	Vicarage Lane	L	Yes	No	16.0	0.6	263.5	3	99.7
AFE002	417539, 290147	Attleboro Farm, Attleboro Lane	L	Yes	No	2.3	0.1	70.3	0	85.8
GE002	418886, 290192	Lovegrove Cottage, Gilson Road	M	Yes	No	11.5	0.2	55.1	0	99.7
CHBS001	419155, 290755	6 Gorsey Way, Lichfield Road	L	Yes	No	3.6	0.1	36.8	0	36.4
MLE002	418547, 290729	Rugby Club	L	Yes	No	10.5	0.1	52.8	0	97.9

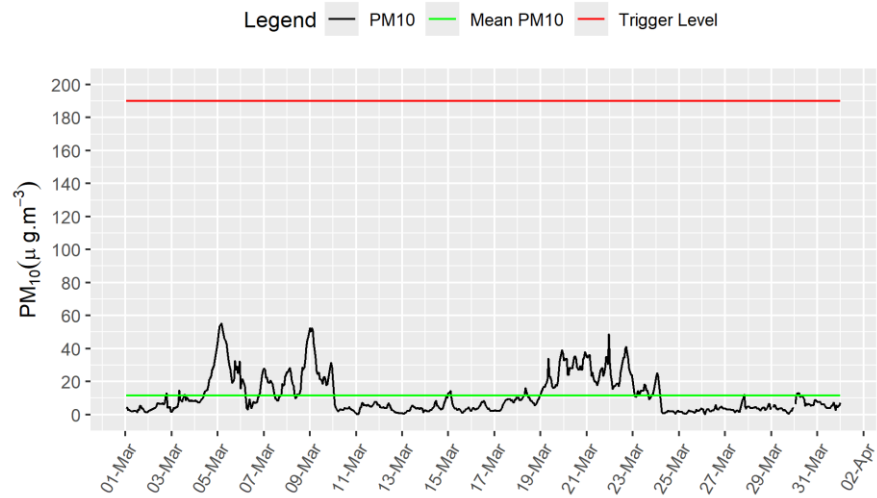
Table 3: Summary of exceedances during period (March 2026)

Monitoring Site ID	Period of trigger alert & Concentration recorded	Investigation	Outcomes / Resolution / Remedial measures implemented
MLE001	20/03/2026 02:01 - 03:00; 199.1 µg/m ³ 03:01 - 04:00; 263.5 µg/m ³ 21/03/2026 03:01 - 04:00; 199.1 µg/m ³	At the times of the exceedances, there were no BBV construction activities occurring near the monitor, so these exceedances are not associated with current BBV construction activities.	N/A

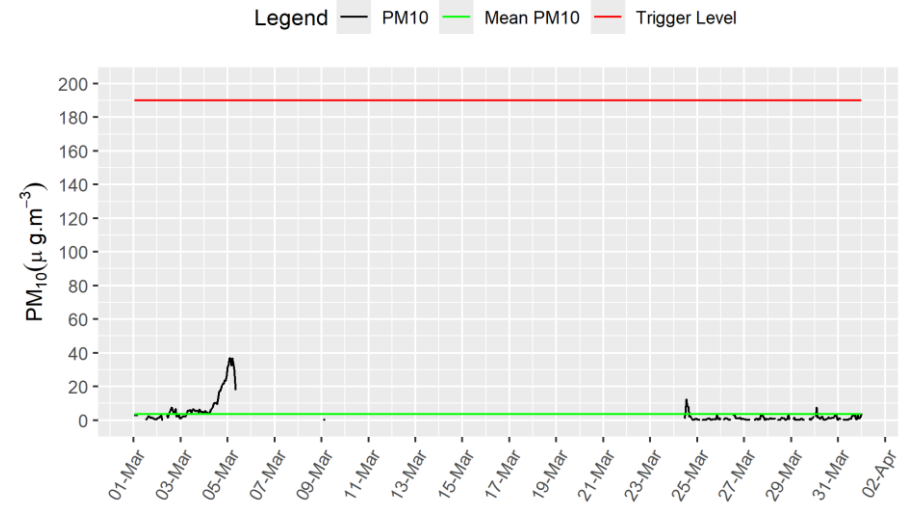
Figure 2: Construction dust 1-hour mean indicative PM₁₀ concentration for all dust monitors



GE002



CHBS001



MLE002

