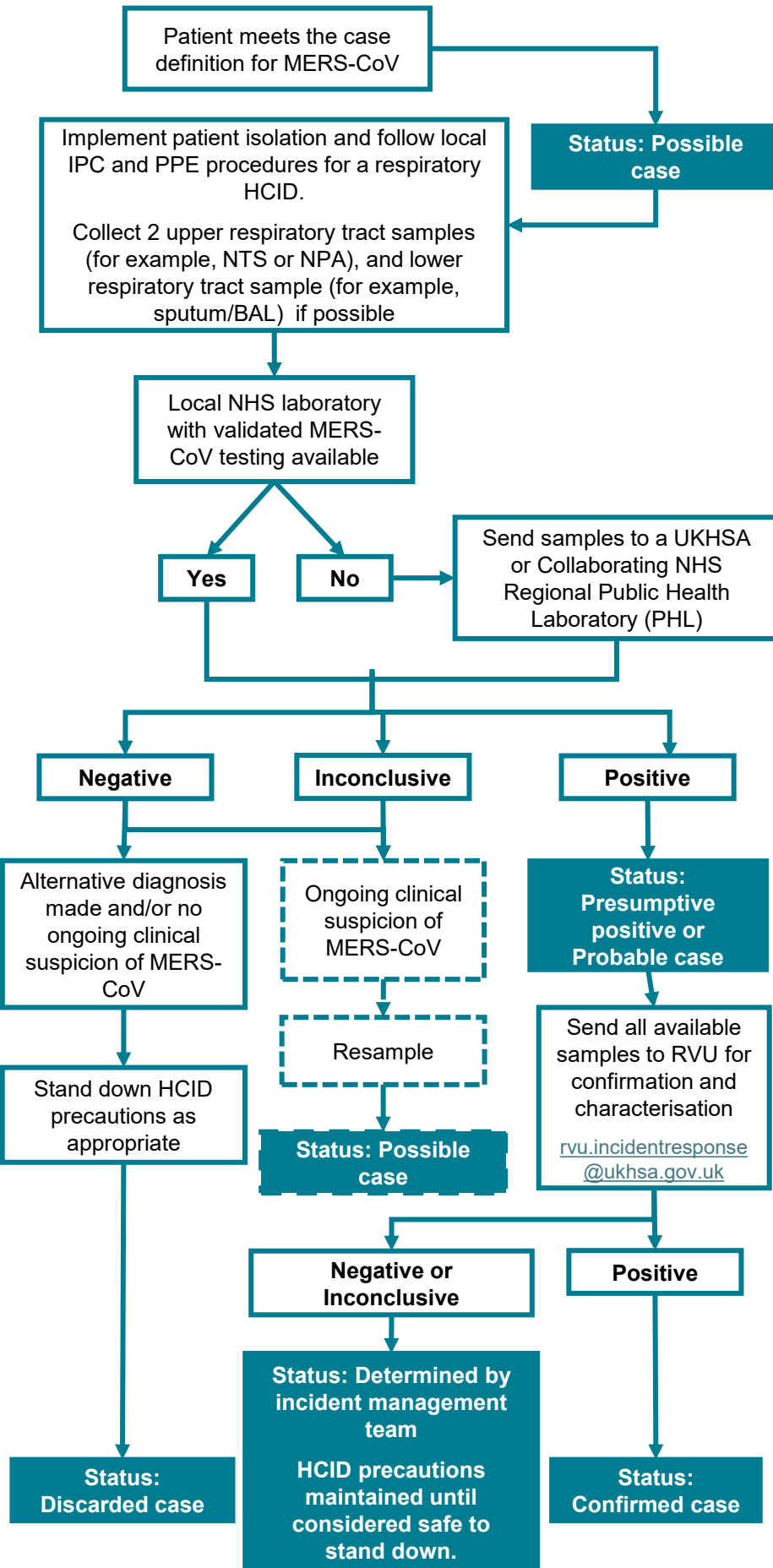


MERS-CoV: Diagnostic pathway

Communications and advice pathway



- Discuss patient history and clinical presentation with local health protection team, duty consultant virologist in the local NHS laboratory or closest UKHSA PHL or the UKHSA Epidemic and Emerging infections duty consultant for advice on clinical case definitions.

- Always discuss testing requirements with the intended recipient laboratory before sending samples.
- In exceptional situations where out of hours testing may be necessary and not available in the local NHS testing laboratory, discuss options with the UKHSA CNL duty consultant virologist.

- Inform local HPT of MERS-CoV test results as soon as possible.

MERS-CoV presumptive positive or inconclusive

- Local HPT to initiate appropriate case and contacts management, and initiation of an incident management team

MERS-CoV negative

- Local HPT to disseminate negative results to the UKHSA acute respiratory infections team (acute.respiratory@ukhsa.gov.uk) and respiratory virus unit (rvu.incidentresponse@ukhsa.gov.uk)

- For inconclusive results, or ongoing clinical suspicion of MERS-CoV infection despite negative test results, an incident management team involving the clinical team, HPT and UKHSA consultants and scientists will be convened to decide on appropriate next steps.