



Animal &
Plant Health
Agency

Great Britain and Northern Ireland Variety List Trials: Trial Procedures for Official Examination of Value for Cultivation and Use (VCU) Harvest 2026

Potato

Appendices

January 2026

Changes since last version (June 2024)

- No changes since last version

Contents

Appendix 1 – Approved Trial Organisers/ Operators for Potato.....	1
AX1.1 Trial Organisers for VCU Assessments	1
AX1.2 Approved Trials Operators for VCU Assessments.....	2
Appendix 2 – Control varieties for VCU assessments	3
Appendix 3 – Dates by which records must be sent to Trial Organiser.....	6
Appendix 4 – Potato VCU trial – tuber records	7
AX4.1 Recording Sheet Example:.....	7
Appendix 5 – Late blight assessment key.....	9
Appendix 6 – Scrab assessment key.....	10

Appendix 1 – Approved Trial Organisers/ Operators for Potato

AX1.1 Trial Organisers for VCU Assessments

Activity	Organisers/Operators Responsible
Trial Organiser	SASA
Trial Design and Data Handling Operator	BioSS
Growing Trial Operators	SASA
Pathology Trial Operators	SASA, Niab and SRUC
Quality Testing Operator	SASA
Data Review and Standard Setting Operator	SASA and BioSS

AX1.2 Approved Trials Operators for VCU Assessments

Characteristic	Organisers/Operators Responsible
Foliage blight	SASA, SRUC
Tuber blight	SASA
Blackleg	SASA
PCN Ro1	SASA
Pa 2/3	SASA, Niab, SRUC
Powdery scab	SASA
Common scab	SASA
PVY ^{N-Wilga} , Leafroll PVA, PVY ^N	Niab
External damage	SASA
Internal damage	SASA
Dry rot	
a) <i>F.coeruleum</i>	SASA
b) <i>F.sulphureum</i>	SASA
Yield, internal and external defects	SASA
Cooking quality	SASA
Crisping quality	SASA
French fry quality	SASA
Baking quality	SASA

Appendix 2 – Control varieties for VCU assessments

The control varieties are:

1. Yield, tuber and consumers quality

- 1st Early: Premiere, Maris Bard
- 2nd Early: Maris Peer, Estima
- Maincrop: Desiree, Maris Piper

2. Crisping test

- All: Lady Rosetta

3. French Fry Test

- 1st Early: Premiere
- Maincrop: Pentland Dell, Maris Piper

4. Baking

- Estima

5. Late blight

- a) Foliar
Home Guard [1E,4]
Bintje [EM,3], Cara [M, 6], Valor [M,6], Sarpo Mira [M,8], Russet Burbank [M,3]
- b) Tuber
Home Guard [1E, 2]
Bintje [EM, 2], Cara [M6], Valor [M,6], Sarpo Mira [M,3]

6. Dry rot

- a) *Fusarium coeruleum*
Catriona [2E, 2], Estima [2E, 5], Nadine [2E, 7]
Pentland Squire [M, 3], Sante [M, 8]
- b) *Fusarium sulphureum*
Nadine [2E, 2], Nectar [EM, 2], Saxon [2E, 7], Sylvana [EM, 8]
Atlantic [EM, 5], Maris Piper [M, 3], Sante [M, 8]

7. Common scab

Home Guard [1E, 3], Maris Bard [1E, 4]
Estima [2E, 6], Maris Peer [2E, 4]
Maris Piper [M, 2], Desiree [M, 2], Pentland Crown [M, 7]

8. Blackleg

Concurrent [1E, 3], Estima [2E, 4]
Cultra [EM, 7], Morene [M, 4], Ailsa [EM, 8]

9. Viruses

- a) Potato leafroll virus
Colleen [1E, 3], Wilja [2E, 6]
King Edward [M, 4], Pentland Crown [M, 7]
- b) Potato virus Y^{N-Wilga}
Colleen [1E 7], Wilja [2E ,2]
King Edward [M, 2], Pentland Crown [M, 7], Fontane [M, 9], Melody [M, 8], Mozart [M, 8]
- c) Potato virus A
Lady Rosetta [2E, 9], Estima [2E, 2]
Desiree [M, 2], Sante [M, 9]
- d) Potato virus Y^N
Lady Rosetta [2E, 5], Estima [2E, 2]
Maris Piper [M, 3], Desiree [M ,2], Record [M, 2], Sante [M, 9], Blue Belle [M,5]

10. Powdery scab

Estima [2E, 3], Accent [1E, 6]
Pentland Crown [M, 7], Cara [M, 7], Sante [M ,8]

11. Potato cyst nematode

- a) Ro1:
Desiree [M, 2], Estima [2E, 2], Maris Piper [M, 9]
- b) Pa2/3:
Desiree [M, 2], Maris Piper [M, 2], Vales Everest [M, 6], Innovator [2E, 9]

12. Damage

a) External (splitting)

Home Guard [1E, 7], Ulster Sceptre [1E, 3]

Maris Peer [2E, 7], Red Craigs Royal [2E, 3]

Maris Piper [M, 7], Russet Burbank [M, 3], Record [M, 6]

b) Internal (brushing)

Home Guard [1E, 5], Ulster Sceptre [1E, 2]

Maris Peer [2E, 3], Red Craigs Royal [2E, 5]

Maris Piper [M, 6], Russet Burbank [M, 3], Record [M, 4]

Appendix 3 – Dates by which records must be sent to Trial Organiser

Record	Latest Date of Receipt by Trials Organiser
Foliage late blight Tuber late blight Blackleg Powdery scab Common scab Yield Internal and external defects Cooking quality Crisp quality	15 November
French fry quality PCN PVY ^{N-Wilga} PVY ^N PVA Leafroll External damage Internal damage Dry rot a) <i>F. coeruleum</i> b) <i>F. sulphureum</i>	15 April

Appendix 4 – Potato VCU trial – tuber records

AX4.1 Recording Sheet Example:

Year:	Centre:	Maturity: Maincrop <i>Second early</i> <i>First early</i>
Variety Code/Name:		
MARKETABLE (Kg): > 35mm		
MARKETABLE(Kg): < 35mm		
UNMARKETABLE (Kg): GROWTH CRACKS		
GREENS		
MISSHAPES		
MECH. DAMAGE		
SLUGS		
CUTWORMS		
WIREWORMS		
C. SCAB > 25% COVER		
BLIGHT		
WET ROTS		
OTHER		
TUBER CHARACTERISTICS: SPECIFIC GRAVITY		
SHAPE UNIFORMITY (1 = poor, 9 = excellent)		

SIZE (1 = < 35mm, 9 = > 85mm)	
SIZE UNIFORMITY (1 = poor, 9 = excellent)	
No of tubers with internal defects (Ref B.7.4.3)	
HOLLOW HEART	
INTERNAL BLEMISH	
OTHER DEFECTS	
NO BLEMISH	

Appendix 5 – Late blight assessment key

(Cruickshank, Stewart & Wastie, 1982. Potato Research 25, 213-214)

For coloured images please contact SASA

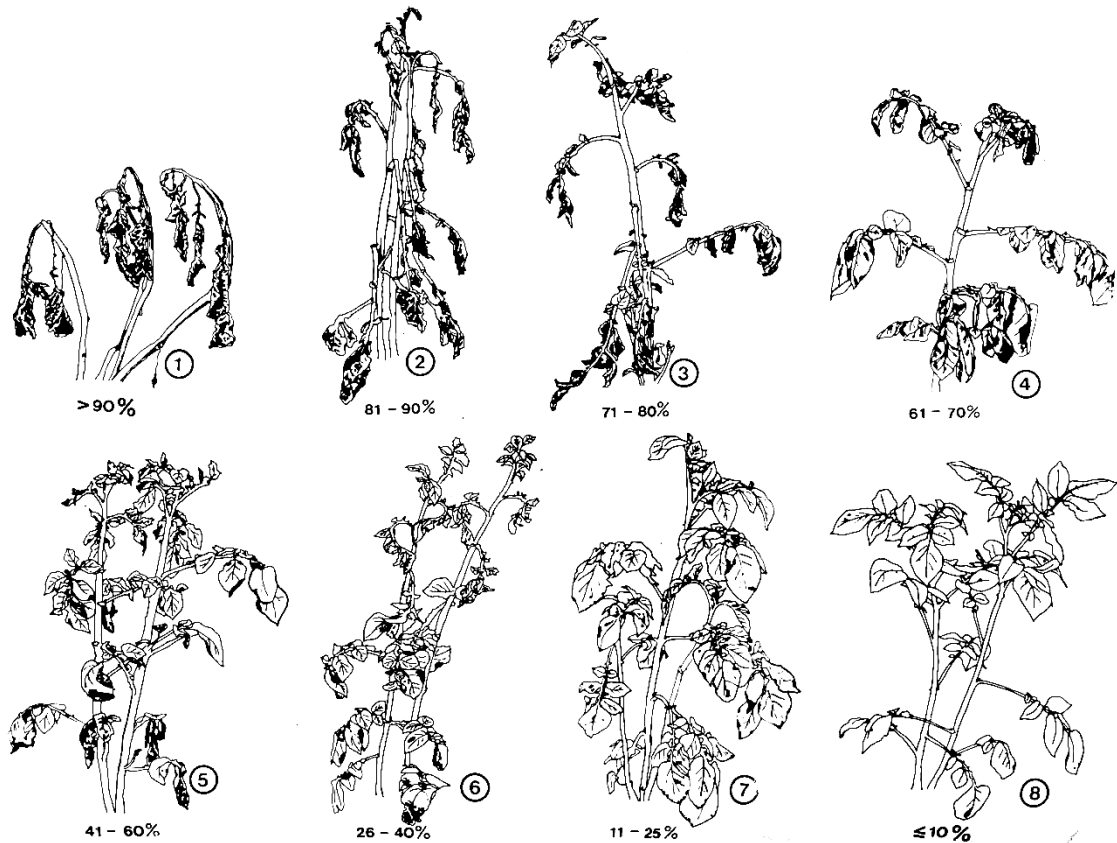


Figure 1. Illustrations to describe the Late Blight assessment key (1 to 8)

1) >90%; 2) 81-90%; 3) 71-80%; 4) 61-70%; 5) 41-60%; 6) 26-40%; 7) 11-25%; 8) ≤ 10%.

Appendix 6 – Scab assessment key

(Manual of plant growth stages and disease assessment keys, MAFF, ADAS, 1976)



Figure 2. Illustrations to describe the Scab assessment key (5, 10, 25, 50)

Black areas indicate the Scab infection. The diagrams should be used as a visual guide for determining the appropriate assessment key to describe the level of infection. This should be based on the distribution and surface area of infection.



© Crown copyright 2025

You may re-use this information (excluding logos) free of charge in any format or medium, under the terms of the Open Government Licence v.3. To view this licence visit www.nationalarchives.gov.uk/doc/open-government-licence/version/3/ or email PSI@nationalarchives.gov.uk

This publication is available at www.gov.uk/government/publications

Any enquiries regarding this publication should be sent to us at

webmaster@apha.gov.uk

www.gov.uk/apha

The Animal and Plant Health Agency (APHA) is an executive agency of the Department for Environment, Food & Rural Affairs, and also works on behalf of the Scottish Government and Welsh Government.