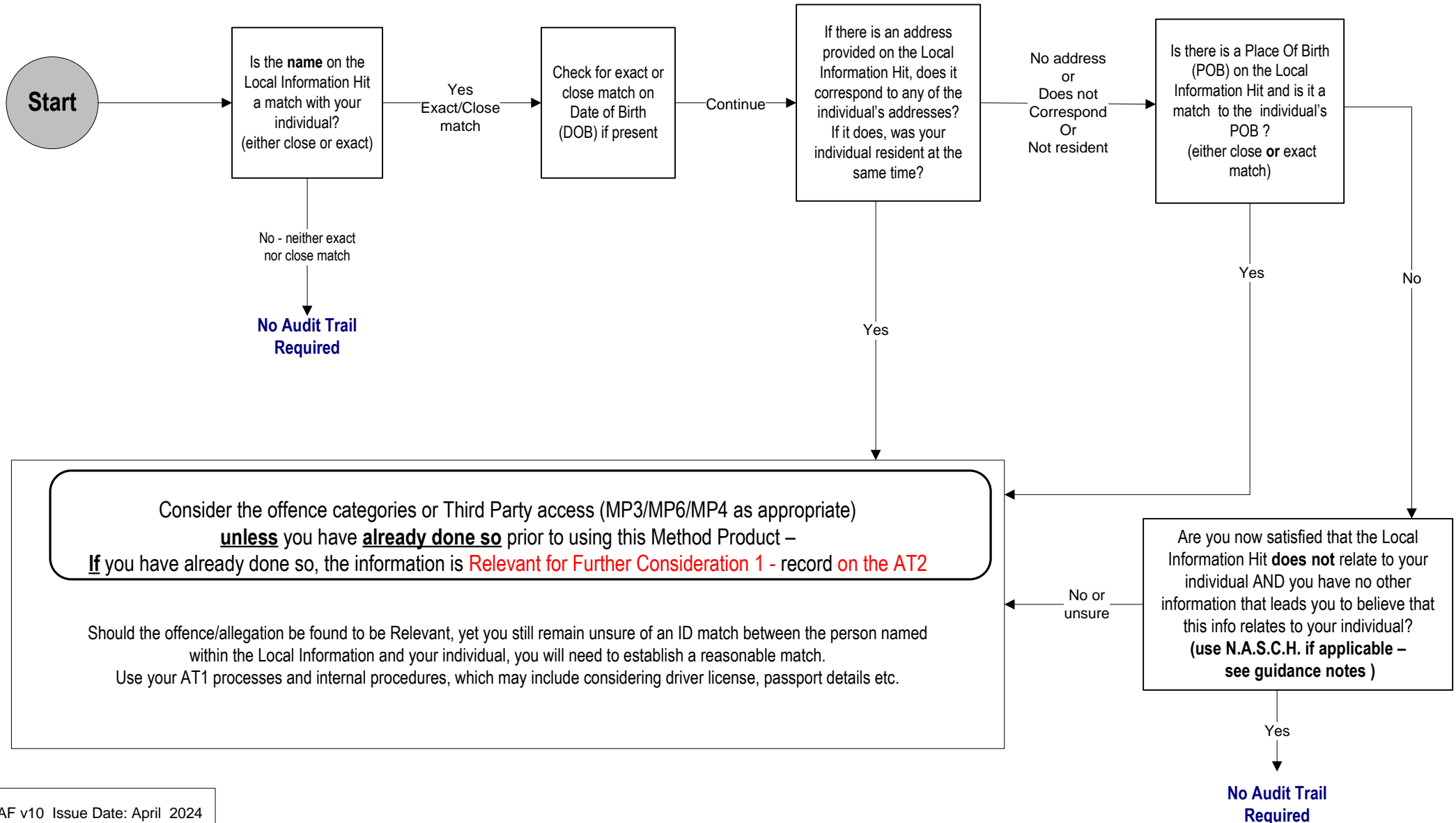


MP2 - Identification

This process is intended to assist in determining whether 'Hit' information relates to your individual (i.e. the Applicant or a Third Party). Where there is any doubt, N.A.S.C.H. factors should also be considered.

NB - By determining the relevance of the offence/allegation, you may be able to discard information without having to undertake further investigation to establish a conclusive match to your individual.



MP2 Guidance notes for DO's.

N.A.S.C.H FACTORS

Name, Age, Sex, Colour, Height – used by police officers to record personal details that aid identification.

In the course of your searches, you may find several 'hits' for individuals with the same/similar details – you need to establish whether any or all of them are one single individual, as well as establish a reasonable match with your Applicant/Third Party.

Should this Method Product fail to satisfy your attempts at identification matching, NASCH Factors (where applicable/available) could be used.

NASCH factors 'Colour' and 'Height' are not captured on application forms, but comparing the NASCH factors from one matched hit with those that may be available in the 'questionable/possible' hit, it may be possible to establish a match and thereby match it to your individual.