

Variation and consolidation single permit

# Notice of variation and consolidation with introductory note

The Environmental Permitting (England & Wales) Regulations 2016

---

Grundon Waste Management Limited

Avonmouth HTI  
Zinc Road  
Avonmouth  
Bristol  
BS11 8AZ

## Variation application number

EPR/LP3505LQ/V002

## Permit number

EPR/LP3505LQ

# Avonmouth HTI

## Permit number EPR/LP3505LQ

### Introductory note

#### This introductory note does not form a part of the notice

Under the Environmental Permitting (England & Wales) Regulations 2016 (schedule 5, part 1, paragraph 19) a variation may comprise a consolidated permit reflecting the variations and a notice specifying the variations included in that consolidated permit.

Schedule 1 of the notice specifies the conditions that have been varied and schedule 2 comprises a consolidated permit which reflects the variations being made. Only the variations specified in schedule 1 are subject to a right of appeal.

The schedules specify the changes made to the permit.

#### Brief description of the variation

This variation is a substantial variation to change the main incineration activity from a 5.1 Part A (1)(b) - the incineration of non-hazardous waste in a waste incineration plant or waste co-incineration plant with a capacity exceeding 3 tonnes per hour - to a Section 5.1 Part A(1)(a) – the incineration of hazardous waste in a waste incineration plant or waste co-incineration plant with a capacity exceeding 10 tonnes per day. The permit implements the requirements of the EU Directives on Industrial Emissions and Waste.

The main features of the permit are as follows:

Furnace technology	Counter current rotary kiln
Number of lines	1
Waste	Hazardous and non-hazardous
Stack height	36.5 m
Permitted plant capacity	28,500 tonnes per year
Electrical generation capacity Boiler efficiency	1.5 MWe >90%

The facility is located at Zinc Road, Avonmouth, BS11 8AZ, within the industrial area of Avonmouth. It is situated near the ASDA Retail Distribution Centre and Avonmouth Docks.

The Installation is subject to the EPR because it carries out activities listed in Part 1 of Schedule 1 to the EPR:

- Section 5.1 Part A(1)(a) – the incineration of hazardous waste in a waste incineration plant or waste co-incineration plant with a capacity exceeding 10 tonnes per day
- Section 5.3 Part A(1)(a)(iv) – The disposal or recovery of hazardous waste with a capacity exceeding 10 tonnes per day involving repackaging
- Section 5.6 Part A(1)(a) – the temporary storage of hazardous waste with a total capacity exceeding 50 tonnes

The High Temperature Incinerator (HTI) is operated by Grondon Waste Management Ltd and processes a wide range of hazardous and non-hazardous wastes, including clinical waste, chemical waste, and other hazardous materials, as well as municipal, commercial, and industrial waste. Specific types of waste include paints, inks, adhesives, resins, contaminated packaging, and healthcare waste.

Waste received at the facility undergoes pre-treatment and waste acceptance procedures, including visual inspections, odour checks, chemical test strips, and the use of both portable and fixed analytical equipment. Certain waste types are processed through shredding and pumping systems, and high-liquid content wastes have their free liquids removed before incineration. Packaged wastes arrive in different packaging types such as wheeled bins, drums, IBCs, boxes, sacks, and bulk bags. These are stored in bays equipped with 3-metre high fire walls to ensure chemical compatibility within each bay. Each bay has a small sump at the rear and can contain 110% of the volume of the largest package.

Bulk liquids are stored in separate 30,000-litre cone-bottomed bulk storage tanks located outside the HTI building. The tanks are blanketed with nitrogen to prevent reactions, and the contents are circulated using an external centrifugal pump. Compressed gases are stored in cylinders and injected into the kiln using a dedicated connection and transfer system. To avoid reactions, only one cylinder is attached to the feed manifold at any time.

Mixed loads of hazardous and non-hazardous wastes are handled at the facility. Materials unsuitable for treatment within the facility are transferred off-site for disposal or recovery at alternative waste management operations. Healthcare waste is handled with special care; infectious clinical waste is placed directly into the furnace without being mixed with other categories of waste or direct handling. Empty bins are washed and disinfected before being moved to a clean storage area ready for collection and reuse.

Chemical storage is managed with secondary containment facilities having a volume of 110% of the largest tank or container to prevent environmental contamination in case of spills. Tanks are equipped with high-level alarms and regularly monitored to ensure safe storage.

A waste tracking system using barcodes (or equivalent) provides traceability of the receipt and treatment/storage status of consignments.

The facility employs high-temperature incineration using a rotary kiln. This technology provides the necessary high temperatures and residence times to ensure complete combustion and minimise the formation of harmful by-products. Liquid wastes are injected into the kiln using liquid injection lances located at the top section of the kiln/base of the secondary combustion chamber.

The facility has single incineration line with a nominal design capacity of approximately 60 tonnes per day, or 2.5 tonnes per hour. The maximum annual capacity is 28,500 tonnes. The stack height is 36.5 metres. The facility generates approximately 1.5 MWe of electricity, with a parasitic load of up to 0.4 MWe, resulting in an export of around 1.1 MWe.

The facility includes several abatement systems to control emissions. NO<sub>x</sub> emissions are reduced using a Selective Non-Catalytic Reduction (SNCR) system with urea solution. Flue gases are treated using a combination of dry and wet systems, including hydrated lime and powdered activated carbon (PAC) injection, and a two-stage wet scrubber using sodium hydroxide. Particulate matter is controlled using fabric filters with catalytic properties.

The facility utilises a waste heat recovery boiler to generate steam, which is then used to produce electricity. It is designed as a combined heat and power (CHP) plant, with the potential to export heat to local users, although no agreements for heat export are currently in place.

Emissions from the facility are continuously monitored using a Continuous Emissions Monitoring System (CEMS) for pollutants such as particulate matter, sulphur dioxide, hydrogen chloride, carbon monoxide, nitrogen oxides, hydrogen fluoride, mercury, and volatile organic compounds. Periodic monitoring is also conducted for heavy metals, dioxins, furans, and other pollutants. Key process parameters, including combustion temperature, oxygen levels, and flue gas composition, are closely monitored to ensure optimal operation and compliance with regulatory limits.

Noise is managed through the use of sound attenuators and regular maintenance of equipment. Odour is controlled by maintaining negative pressure in waste storage areas and regular cleaning. Water use is managed to minimise discharge, with process effluents reused within the facility where possible.

Residues, including bottom ash and air pollution control residues, are handled and disposed of in a way as to prevent contamination of soil and water.

The status log of the permit sets out the permitting history, including any changes to the permit reference number.

<b>Status log of the permit</b>		
<b>Description</b>	<b>Date</b>	<b>Comments</b>
Application EPR/JP3535CE/A001	Duly made 27/06/2012	
Permit determined EPR/JP3535CE	03/01/2013	Original permit issued to New Earth Energy (West) Operations Limited.
Application EPR/JP3535CE/V002 (Variation)	Duly made 02/10/2015	Application to change registered company name and address and addition of waste codes.
Variation determined EPR/JP3535CE	15/10/2015	Varied permit issued to Avonmouth Bio Power Energy Limited.
Application EPR/LP3505LQ/T001 (full transfer of permit EPR/JP3535CE)	Duly made 19/03/2021	Application to transfer the permit in full to Grundon Waste Management Limited.
Transfer determined EPR/LP3505LQ	28/05/2021	Full transfer of permit complete.
Application EPR/LP3505LQ/V002 (variation and consolidation)	Duly made 22/12/2023	Application to vary the permit to a High Temperature Incinerator with associated waste transfer activities
Response to request for further information dated 06/01/2025	Received 03/02/2025	Clarification on storage tonnages and capacity of the proposed transfer activities.
Response to Schedule 5 dated 20/02/2025	Received 23/06/2025	Further information on appropriate measures for chemical and clinical waste handling, Emergency Bypass, H1 assessment for proposed discharge to sewer.
Response to Schedule 5 dated 03/04/2025	Received 23/06/2025	Further information on waste BAT conclusions assessment, thermal input of the facility and updated site condition report.
Response to Schedule 5 dated 17/07/2025	Received 01/08/2025	Cost benefit assessment of Nox abatement mitigation measures, Odour management, technical competency, site drainage arrangements, waste codes and activated carbon and acid gas reagent dosing.
Response to request for further information dated 21/08/2025	Received 26/08/2025	Information on temperature and residence time with regard to asbestos waste treatment.
Response to request for further information dated 15/09/2025	Received 13/10/2025	Information on techniques in place at the scrubber effluent treatment system
Variation determined and consolidation issued EPR/LP3505LQ	27/01/2026	Varied and consolidated permit issued

End of introductory note

# Notice of variation and consolidation

## The Environmental Permitting (England and Wales) Regulations 2016

The Environment Agency in exercise of its powers under regulation 20 of the Environmental Permitting (England and Wales) Regulations 2016 varies

### Permit number

**EPR/LP3505LQ/V002**

### Issued to

**Grundon Waste Management Limited** (“the operator”)

whose registered office is

**Thames House  
Oxford Road  
Benson  
Wallingford  
Oxfordshire  
OX10 6LX**

company registration number 04245965

to operate a regulated facility at

**Avonmouth HTI  
Zinc Road  
Avonmouth  
Bristol  
BS11 8AZ**

to the extent set out in the schedules.

The notice shall take effect from 27/01/2026

Name	Date
Principal Permitting Team Leader	27/01/2026

Authorised on behalf of The Environment Agency

## **Schedule 1**

All conditions have been varied by the consolidated permit as a result of the application made by the operator.

## **Schedule 2 – consolidated permit**

Consolidated permit issued as a separate document.

# Permit

## The Environmental Permitting (England and Wales) Regulations 2016

### Permit number

**EPR/LP3505LQ**

This is the consolidated permit referred to in the variation and consolidation notice for application EPR/LP3505LQ/V002 authorising,

**Grundon Waste Management Limited** (“the operator”),

whose registered office is”.

**Thames House**

**Oxford Road**

**Benson**

**Wallingford**

**Oxfordshire**

**OX10 6LX**

company registration number 04245965

to operate an installation and waste operations at

**Avonmouth HTI**

**Zinc Road**

**Avonmouth**

**Bristol**

**BS11 8AZ**

to the extent authorised by and subject to the conditions of this permit.

Name	Date
Principal Permitting Team Leader	27/01/2026

Authorised on behalf of The Environment Agency

# Conditions

## 1 Management

### 1.1 General management

- 1.1.1 The operator shall manage and operate the activities:
- (a) in accordance with a written management system that identifies and minimises risks of pollution, including those arising from operations, maintenance, accidents, incidents, non-conformances, closure and those drawn to the attention of the operator as a result of complaints; and
  - (b) using sufficient competent persons and resources; and
  - (c) referenced in schedule 1, table S1.1 (AR1), in accordance with a written other than normal operating conditions (OTNOC) management plan.
- 1.1.2 Records demonstrating compliance with condition 1.1.1 shall be maintained.
- 1.1.3 The operator shall review the written management system at least every 3 years or otherwise as requested by the Environment Agency.
- 1.1.4 Any person having duties that are or may be affected by the matters set out in this permit shall have convenient access to a copy of it kept at or near the place where those duties are carried out.
- 1.1.5 The operator shall comply with the requirements of an approved competence scheme or other approval issued by the Environment Agency.

### 1.2 Energy efficiency

- 1.2.1 For the following activities referenced in schedule 1, table S1.1 (AR1 to AR3). The operator shall:
- (a) take appropriate measures to ensure that energy is recovered with a high level of energy efficiency and energy is used efficiently in the activities;
  - (b) review and record at least every four years whether there are suitable opportunities to improve the energy efficiency of the activities; and
  - (c) take any further appropriate measures identified by a review.
- 1.2.2 The operator shall provide and maintain steam and/or hot water pass-outs such that opportunities for the further use of waste heat may be capitalised upon should they become practicable.
- 1.2.3 The operator shall review the viability of Combined Heat and Power (CHP) implementation at least every 4 years, or in response to any of the following factors, whichever comes sooner:
- (a) new plans for significant developments within 15 km of the installation;
  - (b) changes to the Local Plan;
  - (c) changes to the UK CHP Development Map or similar; and
  - (d) new financial or fiscal incentives for CHP.

The results shall be reported to the Agency within 2 months of each review, including where there has been no change to the original assessment in respect of the above factors



### **1.3 Efficient use of raw materials**

- 1.3.1 For the following activities referenced in schedule 1, table S1.1 (AR1 to AR3). The operator shall:
- (a) take appropriate measures to ensure that raw materials and water are used efficiently in the activities;
  - (b) maintain records of raw materials and water used in the activities;
  - (c) review and record at least every four years whether there are suitable alternative materials that could reduce environmental impact or opportunities to improve the efficiency of raw material and water use; and
  - (d) take any further appropriate measures identified by a review.

### **1.4 Avoidance, recovery and disposal of wastes produced by the activities**

- 1.4.1 The operator shall take appropriate measures to ensure that:
- (a) the waste hierarchy referred to in Article 4 of the Waste Framework Directive is applied to the generation of waste by the activities; and
  - (b) any waste generated by the activities is treated in accordance with the waste hierarchy referred to in Article 4 of the Waste Framework Directive; and
  - (c) where disposal is necessary, this is undertaken in a manner which minimises its impact on the environment.
- 1.4.2 The operator shall review and record at least every four years whether changes to those measures should be made and take any further appropriate measures identified by a review.

## **2 Operations**

### **2.1 Permitted activities**

- 2.1.1 The operator is only authorised to carry out the activities specified in schedule 1 table S1.1 (the “activities”).
- 2.1.2 Waste authorised by this permit shall be clearly distinguished from any other waste on the site.
- 2.1.3 Hazardous waste shall not be mixed, either with a different category of hazardous waste or with other waste, substances or materials, unless it is authorised by schedule 1 table S1.1 and appropriate measures are taken.

### **2.2 The site**

- 2.2.1 The activities shall not extend beyond the site, being the land shown edged in green on the site plan at schedule 7 to this permit.

### **2.3 Operating techniques**

- 2.3.1 The activities shall, subject to the conditions of this permit, be operated using the techniques and in the manner described in the documentation specified in schedule 1, table S1.2, unless otherwise agreed in writing by the Environment Agency.
- 2.3.2 If notified by the Environment Agency that the activities are giving rise to pollution, the operator shall submit to the Environment Agency for approval within the period specified, a revision of any plan specified in schedule 1, table S1.2 or otherwise required under this permit which identifies and minimises the risks of pollution relevant to that plan, and shall implement the approved revised plan

in place of the original from the date of approval, unless otherwise agreed in writing by the Environment Agency.

- 2.3.3 Any raw materials or fuels listed in schedule 2 table S2.1 shall conform to the specifications set out in that table.
- 2.3.4 Waste shall only be accepted if:
- (a) it is of a type and quantity listed in schedule 2 tables S2.2 and S2.3; and
  - (b) it conforms to the description in the documentation supplied by the producer or holder.
- 2.3.5 For activity AR1 waste paper, metal, plastic or glass that has been separately collected for the purpose of preparing for re-use or recycling shall not be accepted. Waste from the treatment of these separately collected wastes shall only be accepted if incineration delivers the best environmental outcome in accordance with regulation 12 of the Waste (England and Wales) Regulations 2011.
- 2.3.6 Separately collected fractions other than those listed in condition 2.3.5 shall not be accepted unless they are unsuitable for recovery by recycling.
- 2.3.7 The operator shall ensure that where waste produced by the activities is sent to a relevant waste operation, that operation is provided with the following information, prior to the receipt of the waste:
- (a) the nature of the process producing the waste;
  - (b) the composition of the waste;
  - (c) the handling requirements of the waste;
  - (d) the hazardous property associated with the waste, if applicable; and
  - (e) the waste code of the waste.
- 2.3.8 The operator shall ensure that where waste produced by the activities is sent to a landfill site, it meets the waste acceptance criteria for that landfill.
- 2.3.9 The operator shall burn only those hazardous wastes where the throughputs, calorific values and pollutant compositions are within the ranges specified in table S2.2 of schedule 2, unless otherwise agreed in writing with the Environment Agency.
- 2.3.10 The operator shall ensure that prior to accepting waste subject to condition 2.3.9 at the site, it has obtained sufficient information about the hazardous wastes to be burned to demonstrate compliance with the characteristics described in condition 2.3.9.
- 2.3.11 The operator shall take representative samples of all hazardous waste deliveries to the site unless otherwise agreed in writing with the Environment Agency and test a representative selection of these samples to verify conformity with the information obtained as required by condition 2.3.10. These samples shall be retained for inspection by the Environment Agency for a period of at least 1 month after the material is incinerated and results of any analysis made of such samples will be retained for at least 2 years after the material is incinerated.
- 2.3.12 Waste shall not be charged if:
- (a) the combustion chamber temperature is below 850 °C; or
  - (b) it is hazardous waste with a hazardous halogenated organic content of more than 1% (expressed as chlorine) and the combustion chamber temperature is below 1,100 °C; or
  - (c) it is cytotoxic or cytostatic waste and the combustion chamber temperature is below 1,000 °C;
  - (d) any continuous emission limit value in schedule 3 table S3.1(a) is exceeded during abnormal operation; or
  - (e) any continuous emission limit value in schedule 3 table S3.1 is exceeded, other than during abnormal operation; or

- (f) continuous emission monitors to demonstrate compliance with any continuous emission limit value in schedule 3 table S3.1 are unavailable other than during abnormal operation; or
- (g) there is a stoppage, disturbance or failure of the activated carbon abatement system, other than during abnormal operation; or
- (h) continuous emission monitors to demonstrate compliance with the emission limit values for particulates, TOC or CO in schedule 3 are unavailable unless alternative techniques, as agreed in writing with the Environment Agency, are used to demonstrate compliance with those emission limit values.

2.3.13 The operator shall record the beginning and end of each period of “abnormal operation”.

2.3.14 During a period of “abnormal operation”, the operator shall restore normal operation of the failed equipment or replace the failed equipment as soon as possible.

2.3.15 The operator shall interpret the start of the period of “abnormal operation” as the earliest of the following:

- (a) a technically unavoidable stoppage, disturbance, or failure of continuous emission monitors.
- (b) a technically unavoidable stoppage, disturbance, or failure of the activated carbon abatement system.
- (c) Any other technically unavoidable stoppage, disturbance, or failure of the plant which is causing or could lead to an exceedance of an emission limit value in table S3.1.

2.3.16 The operator shall interpret the end of the period of “abnormal operation” as the earliest of the following:

- (a) when the failed equipment is repaired and brought back into normal operation;
- (b) when the operator initiates a shut down of the waste combustion activity, as described in the application or as agreed in writing with the Environment Agency;
- (c) The failed equipment has not been repaired and brought back into normal operation and a single period of abnormal operation reaches a duration of 4 hours after the start of abnormal operation on an incineration line;
- (d) Abnormal operation occurs on an incineration line and the cumulative duration of abnormal operation periods over 1 calendar year has reached 60 hours on that incineration line.

2.3.17 The operator shall have at least one auxiliary burner in each line which shall be operated at start up, shut down and as required during operation to ensure that the operating temperature specified in condition 2.3.12 is maintained as long as incompletely burned waste is present in the combustion chamber. Unless the temperature specified in condition 2.3.12 is maintained in the combustion chamber, such burner(s) shall be fed only with fuels which result in emissions no higher than those arising from the use of gas oil, liquefied gas or natural gas.

2.3.18 If Infectious clinical waste is burned, it must be placed in the furnace without first being mixed with other categories of waste, using techniques which are no less effective than those described in the application.

2.3.19 Bottom ash and APC residues shall not be mixed.

## 2.4 Improvement programme

2.4.1 The operator shall complete the improvements specified in schedule 1 table S1.3 by the date specified in that table unless otherwise agreed in writing by the Environment Agency.

2.4.2 Except in the case of an improvement which consists only of a submission to the Environment Agency, the operator shall notify the Environment Agency within 14 days of completion of each improvement.

## 2.5 Pre-operational conditions

- 2.5.1 The activities shall not be brought into operation until the measures specified in schedule 1 table S1.4 have been completed.

## 3 Emissions and monitoring

### 3.1 Emissions to water, air or land

- 3.1.1 There shall be no point source emissions to water, air or land except from the sources and emission points listed in schedule 3 tables S3.1, S3.2 and S3.3.
- 3.1.2 The limits given in schedule 3, subject to condition 3.2.1, shall not be exceeded.
- 3.1.3 Wastes produced at the site shall, as a minimum, be sampled and analysed in accordance with schedule 3 table S 3.5. Additional samples shall be taken and tested and appropriate action taken, whenever:
- (a) disposal or recovery routes change; or
  - (b) it is suspected that the nature or composition of the waste has changed such that the route currently selected may no longer be appropriate.

### 3.2 Emissions limits and monitoring for emission to air for incineration plant

- 3.2.1 The limits for emissions to air apply as follows:
- (a) The limits in table S3.1 shall not be exceeded except during periods of abnormal operation.
  - (b) The limits in table S3.1 (a) shall not be exceeded during abnormal operation.
- 3.2.2 Where Continuous Emission Monitors are installed to comply with the monitoring requirements in schedule 3 table S3.1 and S3.1(a); the Continuous Emission Monitors shall be used such that;
- (a) the values of the 95% confidence intervals of a single measured result at the daily emission limit value shall not exceed the following percentages of the emission limit values:

• Carbon monoxide	10%
• Sulphur dioxide	20%
• Oxides of nitrogen (NO & NO <sub>2</sub> expressed as NO <sub>2</sub> )	20%
• Particulate matter	30%
• Total organic carbon (TOC)	30%
• Hydrogen chloride	40%
• Ammonia	40%
• Mercury	40%
  - (b) valid half-hourly average values or 10-minute averages shall be determined within the effective operating time (excluding the start-up and shut-down periods) from the measured values after having subtracted the value of the confidence intervals in condition 3.2.2 (a);
  - (c) where it is necessary to calibrate or maintain the monitor and this means that data are not available for a complete half-hour or 10 minute period, the half-hourly average or 10-minute average shall in any case be considered valid if measurements are available for a minimum of 20 minutes or 7 minutes during the half-hour or 10-minute period respectively. The number of half-hourly or 10-minute averages so validated shall not exceed 5 or 15 respectively per day;

- (d) daily average values shall be calculated as follows:
  - (i) the average of valid half hourly averages or 10 minute averages over calendar day excluding half hourly averages or 10 minute averages during periods of abnormal operation. The daily average value shall be considered valid if no more than five half-hourly average or fifteen 10-minute average values in any day have been determined not to be valid;
- (e) no more than ten daily average values per year shall be determined not to be valid.

### **3.3 Emissions of substances not controlled by emission limits**

- 3.3.1 Emissions of substances not controlled by emission limits (excluding odour) shall not cause pollution. The operator shall not be taken to have breached this condition if appropriate measures, including, but not limited to, those specified in any approved emissions management plan, have been taken to prevent or where that is not practicable, to minimise, those emissions.
- 3.3.2 The operator shall:
  - (a) if notified by the Environment Agency that the activities are giving rise to pollution, submit to the Environment Agency for approval within the period specified, an emissions management plan which identifies and minimises the risks of pollution from emissions of substances not controlled by emission limits;
  - (b) implement the approved emissions management plan, from the date of approval, unless otherwise agreed in writing by the Environment Agency.
- 3.3.3 All liquids in containers, whose emission to water or land could cause pollution, shall be provided with secondary containment, unless the operator has used other appropriate measures to prevent or where that is not practicable, to minimise, leakage and spillage from the primary container.
- 3.3.4 Periodic monitoring shall be carried out at least once every 5 years for groundwater and 10 years for soil, unless such monitoring is based on a systematic appraisal of the risk of contamination

### **3.4 Odour**

- 3.4.1 Emissions from the activities shall be free from odour at levels likely to cause pollution outside the site, as perceived by an authorised officer of the Environment Agency, unless the operator has used appropriate measures, including, but not limited to, those specified in any approved odour management plan, to prevent or where that is not practicable to minimise the odour.
- 3.4.2 The operator shall:
  - (a) if notified by the Environment Agency that the activities are giving rise to pollution outside the site due to odour, submit to the Environment Agency for approval within the period specified, an odour management plan which identifies and minimises the risks of pollution from odour;
  - (b) implement the approved odour management plan, from the date of approval, unless otherwise agreed in writing by the Environment Agency.

### **3.5 Noise and vibration**

- 3.5.1 Emissions from the activities shall be free from noise and vibration at levels likely to cause pollution outside the site, as perceived by an authorised officer of the Environment Agency, unless the operator has used appropriate measures, including, but not limited to, those specified in any approved noise and vibration management plan to prevent or where that is not practicable to minimise the noise and vibration.
- 3.5.2 The operator shall:

- (a) if notified by the Environment Agency that the activities are giving rise to pollution outside the site due to noise and vibration, submit to the Environment Agency for approval within the period specified, a noise and vibration management plan which identifies and minimises the risks of pollution from noise and vibration;
- (b) implement the approved noise and vibration management plan, from the date of approval, unless otherwise agreed in writing by the Environment Agency.

### **3.6 Monitoring**

- 3.6.1 The operator shall, unless otherwise agreed in writing by the Environment Agency, undertake the monitoring specified in the following tables in schedule 3 to this permit:
  - (a) point source emissions specified in tables S3.1, S3.1(a) S3.2 and S3.3
  - (b) process monitoring specified in table S3.4;
  - (c) residue quality in table S3.5
- 3.6.2 The operator shall maintain records of all monitoring required by this permit including records of the taking and analysis of samples, instrument measurements (periodic and continual), calibrations, examinations, tests and surveys and any assessment or evaluation made on the basis of such data.
- 3.6.3 Monitoring equipment, techniques, personnel and organisations employed for the emissions monitoring programme and the environmental or other monitoring specified in condition 3.6.1 shall have either MCERTS certification or MCERTS accreditation (as appropriate) unless otherwise agreed in writing by the Environment Agency. Newly installed CEMs, or CEMs replacing existing CEMs, shall have MCERTS certification and unless otherwise agreed in writing by the Environment Agency have an MCERTS certified range which is not greater than 1.5 times the daily emission limit value (ELV) specified in schedule 3 table S3.1. The CEM shall also be able to measure instantaneous values over the ranges which are to be expected during all operating conditions. If it is necessary to use more than one range setting of the CEM to achieve this requirement, the CEM shall be verified for monitoring supplementary, higher ranges. Newly installed Data handling and acquisition systems (DAHS), or DAHS replacing existing DAHS, shall have MCERTS certification.
- 3.6.4 Permanent means of access shall be provided to enable sampling/monitoring to be carried out in relation to the emission points specified in schedule 3 tables S3.1, S3.1(a) and S3.2 unless otherwise agreed in writing by the Environment Agency.

### **3.7 Pests**

- 3.7.1 The activities shall not give rise to the presence of pests which are likely to cause pollution, hazard or annoyance outside the boundary of the site. The operator shall not be taken to have breached this condition if appropriate measures, including, but not limited to, those specified in any approved pests management plan, have been taken to prevent or where that is not practicable, to minimise the presence of pests on the site.
- 3.7.2 The operator shall:
  - (a) if notified by the Environment Agency, submit to the Environment Agency for approval within the period specified, a pests management plan which identifies and minimises risks of pollution from pests;
  - (b) implement the pests management plan, from the date of approval, unless otherwise agreed in writing by the Environment Agency.

### **3.8 Fire prevention**

- 3.8.1 The operator shall take all appropriate measures to prevent fires on site and minimise the risk of pollution from them including, but not limited to, those specified in any approved fire prevention plan.

3.8.2 The operator shall:

- (a) if notified by the Environment Agency that the activities are giving rise to a risk of fire, submit to the Environment Agency for approval within the period specified, a fire prevention plan which prevents fires and minimises the risk of pollution from fires;
- (b) implement the fire prevention plan, from the date of approval, unless otherwise agreed in writing by the Environment Agency.

## **4 Information**

### **4.1 Records**

4.1.1 All records required to be made by this permit shall:

- (a) be legible;
- (b) be made as soon as reasonably practicable;
- (c) if amended, be amended in such a way that the original and any subsequent amendments remain legible, or are capable of retrieval; and
- (d) be retained, unless otherwise agreed in writing by the Environment Agency, for at least 6 years from the date when the records were made, or in the case of the following records until permit surrender:
  - (i) off-site environmental effects; and
  - (ii) matters which affect the condition of the land and groundwater.

4.1.2 The operator shall keep on site all records, plans and the management system required to be maintained by this permit, unless otherwise agreed in writing by the Environment Agency.

### **4.2 Reporting**

4.2.1 The operator shall send all reports and notifications required by the permit to the Environment Agency using the contact details supplied in writing by the Environment Agency.

4.2.2 A report or reports on the performance of the activities over the previous year shall be submitted to the Environment Agency by 31 January (or other date agreed in writing by the Environment Agency) each year using the annual report form specified in schedule 4, table S4.4 or otherwise in a format agreed with the Environment Agency. The report(s) shall include as a minimum:

- (a) a review of the results of the monitoring and assessment carried out in accordance with the permit including an interpretive review of that data;
- (b) the annual production /treatment data set out in schedule 4 table S4.2;
- (c) the performance parameters set out in schedule 4 table S4.3;
- (d) the functioning and monitoring of the incineration plant in a format agreed with the Environment Agency. The report shall, as a minimum requirement (as required by Chapter IV of the Industrial Emissions Directive) give an account of the running of the process and the emissions into air and water compared with the emission standards in the IED.

4.2.3 Within 28 days of the end of the reporting period the operator shall, unless otherwise agreed in writing by the Environment Agency, submit reports of the monitoring and assessment carried out in accordance with the conditions of this permit, as follows:

- (a) in respect of the parameters and emission points specified in schedule 4 table S4.1;
- (b) for the reporting periods specified in schedule 4 table S4.1 and using the forms specified in schedule 4 table S4.4; and

- (c) giving the information from such results and assessments as may be required by the forms specified in those tables.

4.2.4 The operator shall, unless notice under this condition has been served within the preceding four years, submit to the Environment Agency, within six months of receipt of a written notice, a report assessing whether there are other appropriate measures that could be taken to prevent, or where that is not practicable, to minimise pollution.

4.2.5 Within 1 month of the end of each quarter, the operator shall submit to the Environment Agency using the form made available for the purpose, the information specified on the form relating to the site and the waste accepted and removed from it during the previous quarter.

## 4.3 Notifications

4.3.1 In the event:

- (a) that the operation of the activities gives rise to an incident or accident which significantly affects or may significantly affect the environment, the operator must immediately—
  - (i) inform the Environment Agency,
  - (ii) take the measures necessary to limit the environmental consequences of such an incident or accident, and
  - (iii) take the measures necessary to prevent further possible incidents or accidents;
- (b) of a breach of any permit condition the operator must immediately—
  - (i) inform the Environment Agency, and
  - (ii) take the measures necessary to ensure that compliance is restored within the shortest possible time;
- (c) of a breach of permit condition which poses an immediate danger to human health or threatens to cause an immediate significant adverse effect on the environment, the operator must immediately suspend the operation of the activities or the relevant part of it until compliance with the permit conditions has been restored.
- (d) of activation of the emergency release valve the operator must inform the Environment Agency immediately.

4.3.2 Any information provided under condition 4.3.1 (a), (b) or (c), shall be confirmed by sending the information listed in schedule 5 to this permit within the time period specified in that schedule

4.3.3 Any information provided under condition 4.3.1 (d) shall be confirmed by sending the information listed in part (a), and part (d) if required, of schedule 5 to this permit within the time period specified in that schedule.

4.3.4 Where the Environment Agency has requested in writing that it shall be notified when the operator is to undertake monitoring and/or spot sampling, the operator shall inform the Environment Agency when the relevant monitoring and/or spot sampling is to take place. The operator shall provide this information to the Environment Agency at least 14 days before the date the monitoring is to be undertaken.

4.3.5 The Environment Agency shall be notified within 14 days of the occurrence of the following matters, except where such disclosure is prohibited by Stock Exchange rules:

Where the operator is a registered company:

- (a) any change in the operator's trading name, registered name or registered office address; and
- (b) any steps taken with a view to the operator going into administration, entering into a company voluntary arrangement or being wound up.

Where the operator is a corporate body other than a registered company:



- (a) any change in the operator's name or address; and
- (b) any steps taken with a view to the dissolution of the operator.

In any other case:

- (a) the death of any of the named operators (where the operator consists of more than one named individual);
- (b) any change in the operator's name(s) or address(es); and
- (c) any steps taken with a view to the operator, or any one of them, going into bankruptcy, entering into a composition or arrangement with creditors, or, in the case of them being in a partnership, dissolving the partnership.

4.3.6 Where the operator proposes to make a change in the nature or functioning, or an extension of the activities, which may have consequences for the environment and the change is not otherwise the subject of an application for approval under the Regulations or this permit:

- (a) the Environment Agency shall be notified at least 14 days before making the change; and
- (b) the notification shall contain a description of the proposed change in operation.

4.3.7 The Environment Agency shall be given at least 14 days notice before implementation of any part of the site closure plan.

## **4.4 Interpretation**

4.4.1 In this permit the expressions listed in schedule 6 shall have the meaning given in that schedule.

4.4.2 In this permit references to reports and notifications mean written reports and notifications, except where reference is made to notification being made "immediately", in which case it may be provided by telephone

# Schedule 1 – Operations

Table S1.1 activities			
Activity reference	Activity listed in Schedule 1 of the EP Regulations	Description of specified activity	Limits of specified activity
AR1	S5.1 A1 (a)	The incineration of hazardous waste in a waste incineration plant with a capacity of 10 tonnes per day or more.	<p>From receipt of waste to emission of exhaust gas and removal from site of waste arising.</p> <p>Waste types and quantities as specified in Table S2.2 of this permit.</p> <p>From receipt of waste to emission of exhaust gas and removal from site of waste arising.</p> <p>The total amount of waste stored on site prior to incineration (AR1) and waste stored (AR3 and AR8) including both hazardous and non-hazardous waste, shall not exceed 705 tonnes of solid and liquid wastes.</p> <p>Mixing of hazardous waste, either with a different category of hazardous waste or with other waste, substances or materials, is permitted for the purpose of waste feed prior to incineration.</p> <p>Waste shall be stored on impermeable surfacing with sealed drainage.</p> <p>Waste shall not be stored in vehicles or vehicle trailers, unless they are being received for immediate offloading or prepared for imminent transfer (that is, they will be removed from site within 24 hours, or 72 hours if over a weekend).</p> <p>All infectious waste shall be stored inside a building unless otherwise agreed with the Environment Agency.</p> <p>The following healthcare wastes: Pharmaceutical, chemical, anatomical and palletised waste</p>

			<p>shall be stored securely within designated areas of the building.</p> <p>Infectious clinical waste shall be stored for no longer than 7 days if outside, or for no longer than 14 days if stored in a building.</p> <p>Refrigerated anatomical waste shall be stored for no longer than 14 days.</p> <p>Unrefrigerated anatomical waste shall be stored for no longer than 24 hours, or up to 72 hours if over a weekend.</p> <p>Asbestos waste shall be stored double bagged or wrapped, in sealed, closed and locked containers.</p> <p>Asbestos waste shall not be stored loosely in bays and shall not be transferred between different skips or containers.</p> <p>Mechanical equipment, for example loading shovels, chutes and conveyors shall not be used to move asbestos waste.</p> <p>Aerosol canisters shall be securely stored under cover in well-ventilated enclosed containers, or within a caged storage area. Aerosol canisters shall only be stored for up to 3 months.</p> <p>Oxidisers shall be securely stored in a segregated area. Oxidisers shall only be stored for up to 3 months.</p> <p>The following waste types shall be stored on site for no longer than 6 months:</p> <ul style="list-style-type: none"> <li>• non-infectious cytotoxic and cytostatic medicines</li> <li>• other hazardous chemicals or other hazardous wastes</li> </ul> <p>Notwithstanding the limits given above where a shorter storage time period is given in an agreed</p>
--	--	--	---

			<p>management plan then that time period shall take precedence.</p> <p>No waste types shall be submitted to this activity other than those wastes specified in Schedule 2, Table S2.2.</p>
AR2	<p>S5.3 A(1)(a)(iv)</p> <p>Disposal or recovery of hazardous waste with a capacity exceeding 10 tonnes per day involving repackaging.</p>	<p>Disposal or recovery of hazardous waste with a capacity exceeding 10 tonnes per day involving repackaging.</p>	<p>Repackaging is limited to:</p> <ul style="list-style-type: none"> <li>• taking a waste package (for example a bag, jar, drum or box) out of one cart or bulk container (for example a skip) and placing it into another cart or bulk container (for example, a skip)</li> <li>• taking a waste package from a cart or bulk container (for example, skip) and placing it onto a pallet or vehicle</li> <li>• taking a waste package from a pallet and placing it into a cart or bulk container (for example, skip)</li> <li>• transferring, removing or separating waste from its primary packaging (for example container, bags, bins, boxes).</li> </ul> <p>Healthcare waste and asbestos waste shall not be transferred, removed or separated from its primary packaging (for example bags, bins, boxes and blister packs).</p> <p>Wastes that are combined together during repackaging activities shall be materially the same and not change the waste's chemical composition or characteristics</p> <p>The repackaging of wastes shall not result in:</p> <ul style="list-style-type: none"> <li>• any incompatible wastes being repackaged together in the same container</li> <li>• a reaction of repackaged wastes with each other</li> <li>• a reaction with the container in which the wastes are being placed</li> </ul> <p>Washing and disinfection of reusable sharps bins and repackaging of wastes shall take place within a building on an</p>

			<p>impermeable surface with sealed drainage.</p> <p>Repackaging shall take place undercover or in a building, on impermeable surfacing with sealed drainage.</p> <p>Fugitive emissions shall be minimised during repackaging.</p> <p>Repackaging of waste shall not change either the maximum storage times for waste on site or the amount that can be stored at any one time.</p> <p>No waste types shall be submitted to this activity other than those hazardous wastes specified in Schedule 2, Table S2.3.</p>
AR3	S5.6 A(1)(a)	Temporary storage of hazardous waste with a total capacity exceeding 50 tonnes	<p>From receipt and storage of hazardous waste on site to its repackaging on site; or its transfer off-site.</p> <p>The total amount of waste stored on site prior to incineration (AR1) and waste stored (AR3 and AR8) including both hazardous and non-hazardous waste, shall not exceed 705 tonnes of solid liquid wastes.</p> <p>No waste shall be treated, blended or mixed, or compacted on site.</p> <p>Containerised wastes that are sensitive to air, light, heat, moisture or extreme ambient temperatures shall be stored under cover. All other wastes shall be stored undercover where practicable.</p> <p>Waste shall be stored on impermeable surfacing with sealed drainage.</p> <p>Waste shall not be stored in vehicles or vehicle trailers, unless they are being received for immediate offloading or prepared for imminent transfer (that is, they will be removed from site within 24 hours, or 72 hours if over a weekend).</p>

			<p>All infectious waste shall be stored inside a building unless otherwise agreed with the Environment Agency.</p> <p>The following healthcare wastes: pharmaceutical, chemical, anatomical and palletised waste, shall be stored securely within designated areas of the building.</p> <p>Infectious clinical waste shall be stored for no longer than 7 days if outside, or for no longer than 14 days if stored in a building.</p> <p>Refrigerated anatomical waste shall be stored for no longer than 14 days.</p> <p>Unrefrigerated anatomical waste shall be stored for no longer than 24 hours, or up to 72 hours if over a weekend.</p> <p>Asbestos waste shall be stored double bagged or wrapped, in sealed, closed and locked containers.</p> <p>Asbestos waste shall not be stored loosely in bays and shall not be transferred between different skips or containers.</p> <p>Mechanical equipment, for example loading shovels, chutes and conveyors shall not be used to move asbestos waste.</p> <p>Aerosol canisters shall be securely stored under cover in well-ventilated containers, and within a caged storage area. Aerosol canisters shall only be stored for up to 3 months.</p> <p>Oxidisers shall be securely stored in a segregated area. Oxidisers shall only be stored for up to 3 months.</p> <p>The following waste types shall be stored on site for no longer than 6 months:</p>
--	--	--	---

			<ul style="list-style-type: none"> <li>• non-infectious cytotoxic and cytostatic medicines</li> <li>• dental amalgam</li> <li>• other hazardous chemicals or other hazardous wastes unless otherwise agreed in writing with the Environment Agency.</li> </ul> <p>Notwithstanding the limits given above where a shorter storage time period is given in an agreed management plan then that time period shall take precedence.</p> <p>No waste types shall be submitted to this activity other than those hazardous wastes specified in Schedule 2, Table S2.3.</p>
<b>Directly Associated Activities</b>			
AR4	Electricity Generation	Generation of electrical power using a steam turbine from energy recovered from the flue gases.	
AR5	Back up electrical generator	For providing emergency electrical power to the plant in the event of supply interruption.	<p>Emergency use to a maximum of 500 hours operation per year.</p> <p>Maximum of 50 hours testing per year.</p>
AR6	Bin Wash	Operation of bin washer to discharge of effluent to public sewer.	<p>Handling, cleaning and storage of containers and carts prior to dispatch.</p> <p>Bin, container or cart washing equipment shall be purpose-built, contained and located in a designated area of the facility provided with an impermeable surface with self-contained drainage. The cart or bin wash must be designed to collect and contain all wash waters, including any spray.</p>
<b>Activity reference</b>	<b>Description of activities for waste operations</b>		<b>Limits of activities</b>
AR7	Repackaging of non-hazardous waste.	<p>R12 Exchange of waste for submission to any of the operations numbered R1 to R11 (repackaging)</p> <p>D14 Repackaging prior to submission to</p>	<p>Repackaging is limited to:</p> <ul style="list-style-type: none"> <li>• taking a waste package (for example a bag, jar, drum or box) out of one cart or bulk container (for example a skip) and placing it into another cart or bulk container (for example, a skip)</li> <li>• taking a waste package from a cart or bulk container (for</li> </ul>

		<p>any of the operations numbered D1 to D13</p>	<p>example, skip) and placing it onto a pallet or vehicle</p> <ul style="list-style-type: none"> <li>• taking a waste package from a pallet and placing it into a cart or bulk container (for example, skip)</li> <li>• transferring, removing or separating waste from its primary packaging (for example container, bags, bins, boxes).</li> </ul> <p>Healthcare waste shall not be transferred, removed or separated from its original packaging.</p> <p>Wastes that are combined together during repackaging activities shall be materially the same and not change the waste's chemical composition or characteristics.</p> <p>The repackaging of wastes shall not result in:</p> <ul style="list-style-type: none"> <li>• any incompatible wastes being repackaged together in the same container</li> <li>• a reaction of repackaged wastes with each other</li> <li>• a reaction with the container in which the wastes are being placed</li> </ul> <p>Washing and disinfection of reusable sharps bins and repackaging of wastes shall take place within a building on an impermeable surface with sealed drainage.</p> <p>Repackaging shall take place within a building on an impermeable surface with sealed drainage.</p> <p>Fugitive emissions shall be minimised during repackaging.</p> <p>Repackaging of waste shall not change either the maximum storage times for waste on site or the amount that can be stored at any one time</p> <p>No waste types shall be submitted to this activity other than those non-hazardous wastes specified in Schedule 2, Table S2.3.</p>
--	--	---	---



AR8	Storage of non-hazardous waste.	<p>R13: Storage of waste pending any of the operations numbered R1 to R12 (excluding temporary storage, pending collection, on the site where it is produced)</p> <p>D15 Storage pending any of the operations numbered D1 to D14 (excluding temporary storage, pending collection, on the site where the waste is produced)</p>	<p>From receipt and storage of non-hazardous waste on site to its repackaging on site; or its transfer off-site.</p> <p>The total amount of waste stored on site prior to incineration (AR1) and waste stored (AR3 and AR8) including both hazardous and non-hazardous waste, shall not exceed 705 tonnes of solid wastes and liquid wastes.</p> <p>No waste shall be treated, blended or mixed, or compacted on site.</p> <p>Waste shall be stored on impermeable surfacing with sealed drainage.</p> <p>Waste shall not be stored in vehicles or vehicle trailers, unless they are being received for immediate offloading or prepared for imminent transfer (that is, they will be removed from site within 24 hours, or 72 hours if over a weekend).</p> <p>The following healthcare wastes, pharmaceutical, chemical, anatomical and palletised waste, shall be stored securely within designated areas of the building.</p> <p>Refrigerated anatomical waste shall be stored for no longer than 14 days.</p> <p>Unrefrigerated anatomical waste shall be stored for no longer than 24 hours, or up to 72 hours if over a weekend.</p> <p>Aerosol canisters shall be securely stored under cover in well-ventilated enclosed containers, or within a caged storage area. Aerosol canisters shall only be stored for up to 3 months.</p> <p>Notwithstanding the limits given above where a shorter storage time period is given in an agreed management plan then that time period shall take precedence.</p>
-----	---------------------------------	--	---

		No waste types shall be submitted to this activity other than those non-hazardous wastes specified in Schedule 2, Table S2.3.
--	--	---

<b>Table S1.2 Operating techniques</b>		
<b>Description</b>	<b>Parts</b>	<b>Date Received</b>
The application	Grundon Waste Management Ltd Supporting Information – EP Variation	22/03/2023
Response to request for further information dated 06/01/2025	Maximum storage capacities and annual tonnages for the waste transfer and storage activities.	03/02/2025
Response to Schedule 5 Notice dated 20/02/2025	Measures detailed demonstrating compliance with healthcare wastes appropriate measures and chemical waste appropriate measures.	23/06/2025
Response to Schedule 5 Notice dated 03/04/2025	Measures detailed demonstrating compliance with waste BAT Conclusions.	23/06/2025
Response to Schedule 5 Notice dated 17/07/2025	Measures detailed on odour management, site drainage arrangements, waste code handling and activated carbon and acid gas reagent dosing.	01/08/2025
Response to request for further information dated 21/08/2025	Details of solid phase residence temperature and time.	26/08/2025
Response to request for further information dated 15/09/2025	Information on techniques in place at the scrubber effluent treatment system and on general effluent control measures in place.	13/10/2025
Healthcare waste: appropriate measures for permitted facilities  Version published 13 July 2020	<p>For activity AR1, all of the following parts of the appropriate measures guidance shall apply:</p> <ul style="list-style-type: none"> <li>Waste pre-acceptance, acceptance and waste tracking appropriate measures</li> <li>Waste storage, segregation and handling appropriate measures – measure</li> </ul> <p>The following parts of the appropriate measures guidance are not applicable:</p> <ul style="list-style-type: none"> <li>Waste storage, segregation and handling appropriate measures – measures 33, 34, 35, 36</li> </ul>	-

<b>Table S1.2 Operating techniques</b>		
<b>Description</b>	<b>Parts</b>	<b>Date Received</b>
Healthcare waste: appropriate measures for permitted facilities  Version published 13 July 2020	For activities AR2, AR3 AR7, AR8 all parts of the appropriate measures guidance shall apply.	-
Chemical waste: appropriate measures for permitted facilities  Version published 18 November 2020	For activity AR1, all of the following parts of the appropriate measures guidance shall apply: <ul style="list-style-type: none"> <li>Waste pre-acceptance, acceptance, and tracking</li> <li>Waste storage, segregation, and handling</li> </ul>	-
Chemical waste: appropriate measures for permitted facilities  Version published 18 November 2020	For activities AR2, AR3 AR7, AR8 all parts of the appropriate measures guidance shall apply.	-
Non-hazardous and inert waste: appropriate measures for permitted facilities  Version published 12 July 2021	For activities AR2, AR3 AR7, AR8 all parts of the appropriate measures guidance shall apply.	-

<b>Table S1.3 Improvement programme requirements</b>		
<b>Reference</b>	<b>Requirement</b>	<b>Date</b>
<b>IC1</b>	The Operator shall submit a written report to the Environment Agency for approval on the implementation of its Environmental Management System (EMS). The report shall also include details of a review of the OTNOC management plan and any updates to the plan following the review.	Within 12 months of the completion of commissioning.
<b>IC2</b>	The Operator shall submit a written proposal to the Environment Agency for approval to carry out tests to determine the size distribution of the particulate matter in the exhaust gas emissions to air from emission point A1, identifying the fractions within the PM <sub>10</sub> , and PM <sub>2.5</sub> ranges. On receipt of written approval from the Environment Agency to the proposal and the timetable, the Operator shall carry out the tests and submit to the Environment Agency a report on the results.	Within 6 months of the completion of commissioning.

Table S1.3 Improvement programme requirements		
Reference	Requirement	Date
IC3	The Operator shall submit a written report to the Environment Agency for approval on the commissioning of the installation. The report shall summarise the environmental performance of the plant as installed against the design parameters set out in the Application. The report shall also include a review of the performance of the facility against the conditions of this permit and details of procedures developed during commissioning for achieving and demonstrating compliance with permit conditions and confirm that the Environmental Management System (EMS) has been updated accordingly.	Within 4 months of the completion of commissioning.
IC4	The operator shall notify the Environment Agency of the proposed date(s) that validation testing is planned for.	Notification at least 3 weeks prior to validation testing
	During commissioning the operator shall carry out validation testing to validate the residence time, minimum temperature and oxygen content of the gases in the furnace whilst operating under normal load and most unfavourable operating conditions. The validation shall be to the methodology as approved through pre-operational condition PO8.	Validation tests completed before the end of commissioning
	The operator shall submit a written report to the Environment Agency for approval on the validation of residence time, oxygen and temperature whilst operating under normal load, minimum turn down and overload conditions.  The report shall identify the process controls used to ensure residence time and temperature requirements are complied with during operation of the incineration plant	Report submitted within 2 months of the completion of commissioning.
IC5	The Operator shall submit a written report to the Environment Agency for approval describing the performance and optimisation of: <ul style="list-style-type: none"> <li>The lime injection system for minimisation of acid gas emissions</li> <li>The carbon injection system for minimisation of dioxin and heavy metal emissions.</li> <li>The Selective Non Catalytic Reduction (SNCR) system and combustion settings to minimise oxides of nitrogen (NO<sub>x</sub>). The report shall include an initial assessment of the level of NO<sub>x</sub>, N<sub>2</sub>O and NH<sub>3</sub> emissions that can be achieved under optimum operating conditions.</li> </ul>	Within 4 months of the completion of commissioning.
IC6	The Operator shall carry out an assessment of the impact of emissions to air of the following component metals subject to emission limit values:  Cr, Cu, Ni	15 months from the completion of commissioning

Table S1.3 Improvement programme requirements		
Reference	Requirement	Date
	<p>A report on the assessment shall be submitted to the Environment Agency for approval.</p> <p>Emissions monitoring data obtained during the first year of operation shall be used to compare the actual emissions with those assumed in the impact assessment submitted with the Application. An assessment shall be made of the impact of each metal against the relevant ES. In the event that the assessment shows that an environmental standard can be exceeded, the report shall include proposals for further investigative work.</p>	
IC7	<p>The Operator shall submit a written summary report to the Environment Agency for approval to confirm that the performance of Continuous Emission Monitors for parameters as specified in Table S3.1 and Table S3.1(a) complies with the requirements of EN 14181, specifically the requirements of QAL1, QAL2 and QAL3. The report shall include the results of calibration and verification testing,</p>	<p>Initial calibration report to be submitted to the Agency within 3 months of completion of commissioning.</p> <p>Full summary evidence compliance report to be submitted within 18 months of completion of commissioning.</p>
IC8	<p>During commissioning, the operator shall carry out tests to demonstrate whether the furnace combustion air will ensure that negative pressure is achieved throughout the reception hall. The tests shall demonstrate whether air is pulled through the reception hall and bunker area and into the furnace with dead spots minimised. The operator shall submit a report to the Environment Agency, for approval, summarising the findings along with any proposed improvements if required</p>	<p>Within 6 months of completion of commissioning.</p>
IC9	<p>The operator shall carry out a programme of dioxin and dioxin like PCB monitoring over a period and frequency agreed with the Environment Agency. The operator shall submit a report to the Environment Agency for approval with an analysis of whether dioxin emissions can be considered to be stable.</p>	<p>Within 6 months of completion of commissioning or as agreed in writing with the Environment Agency</p>
IC10	<p>During commissioning, the operator shall carry out tests to assess whether the air monitoring location(s) meet the requirements of BS EN 15259 and supporting Method Implementation Document (MID).</p> <p>A written report shall be submitted for approval setting out the results and conclusions of the assessment including where necessary proposals for improvements to meet the requirements. The report shall specify the design of the ports for PM10 and PM2.5 sampling.</p> <p>Where notified in writing by the Environment Agency that the requirements are not met, the operator shall submit proposals or</p>	<p>Report to be submitted to the Agency within 3 months of completion of commissioning.</p>

Table S1.3 Improvement programme requirements																						
Reference	Requirement	Date																				
	further proposals for rectifying this in accordance with the time scale in the notification. The proposals shall be implemented in accordance with the Environment Agency’s written approval.																					
IC11a	The operator shall submit a methodology to the Environment Agency for approval for carrying out a study to determine the minimum necessary operating temperature, and other operational parameters, to ensure that wastes which contain significant amounts of per-and polyfluoroalkyl substances (PFAS) are destroyed to a satisfactory degree.  Unless otherwise agreed in writing by the Environment Agency, the study shall include tests using waste firefighting foams which, contain, as far as possible, the following PFAS substances, and which can be added to the incinerator in sufficient quantities to measure a destruction efficiency (DE) of up to 99.999%.	Prior to commencement of commissioning																				
	<table><tr><th>Analyte</th><th>Chemical Abstracts Service Reference Number</th></tr><tr><td>Perfluoro-1-hexanesulfonic acid (PFHxS)</td><td>355-46-4</td></tr><tr><td>Perfluoro-1-octanesulfonic acid (PFOS)</td><td>1763-23-1</td></tr><tr><td>1H, 1H, 2H, 2H-perfluorooctane sulfonic acid (6:2 FTS)</td><td>27619-97-2</td></tr><tr><td>Perfluorobutanoic acid (PFBA)</td><td>375-22-4</td></tr><tr><td>Perfluoropentanoic acid (PFPeA)</td><td>2706-90-3</td></tr><tr><td>Perfluorohexanoic acid (PFHxA)</td><td>307-24-4</td></tr><tr><td>Perfluoroheptanoic acid (PFHpA)</td><td>375-85-9</td></tr><tr><td>Perfluorooctanoic acid (PFOA)</td><td>335-67-1</td></tr><tr><td>Perfluorononanoic acid (PFNA)</td><td>375-95-1</td></tr></table>		Analyte	Chemical Abstracts Service Reference Number	Perfluoro-1-hexanesulfonic acid (PFHxS)	355-46-4	Perfluoro-1-octanesulfonic acid (PFOS)	1763-23-1	1H, 1H, 2H, 2H-perfluorooctane sulfonic acid (6:2 FTS)	27619-97-2	Perfluorobutanoic acid (PFBA)	375-22-4	Perfluoropentanoic acid (PFPeA)	2706-90-3	Perfluorohexanoic acid (PFHxA)	307-24-4	Perfluoroheptanoic acid (PFHpA)	375-85-9	Perfluorooctanoic acid (PFOA)	335-67-1	Perfluorononanoic acid (PFNA)	375-95-1
	Analyte		Chemical Abstracts Service Reference Number																			
	Perfluoro-1-hexanesulfonic acid (PFHxS)		355-46-4																			
	Perfluoro-1-octanesulfonic acid (PFOS)		1763-23-1																			
	1H, 1H, 2H, 2H-perfluorooctane sulfonic acid (6:2 FTS)		27619-97-2																			
	Perfluorobutanoic acid (PFBA)		375-22-4																			
	Perfluoropentanoic acid (PFPeA)		2706-90-3																			
	Perfluorohexanoic acid (PFHxA)		307-24-4																			
	Perfluoroheptanoic acid (PFHpA)		375-85-9																			
	Perfluorooctanoic acid (PFOA)		335-67-1																			
	Perfluorononanoic acid (PFNA)		375-95-1																			
	The methodology shall have regard to the Environment Agency’s literature review titled “A Systematic scoping review of PFAS Remediation” dated July 2024 (or subsequently published version) and shall include as a minimum: <ul style="list-style-type: none"><li>the waste(s) which will be included in the study;</li><li>the plant operating temperature(s) and any other operational parameters which will be tested during the study;</li></ul>																					

Table S1.3 Improvement programme requirements		
Reference	Requirement	Date
	<ul style="list-style-type: none"> <li>the methodology which will be used for calculating the destruction efficiency of PFAS at the plant, taking into consideration any relevant PFAS compounds which the literature review suggests may be formed by the incineration process (for PFAS substances that are POPs this should include consideration of the DE and/or destruction removal efficiency (DRE) as per the definitions in the Basel Convention Guidance “Updated general technical guidelines for the environmentally sound management of wastes consisting of, containing or contaminated with persistent organic pollutants (POPs)”); and</li> <li>a description of the sampling and testing programme which will be used including: <ul style="list-style-type: none"> <li>the substances which will be measured in both the incoming waste and outputs from the process, including the bottom ash, scrubber effluent and emissions to air.</li> <li>the analytical methods which will be used.</li> </ul> </li> </ul>	
IC11b	The operator shall carry out the study approved by the Environment Agency in response to IC11a and submit the results to the Environment Agency, including any proposed revisions to the minimum operating temperature when incinerating wastes containing significant amounts of PFAS, or other measures required.	6 months following completion of commissioning
IC12	<p>The operator shall perform a study to determine the extent to which the operation of the systems in place at the plant to minimise NOx emissions (including the NOx abatement installed to meet the emission limit value for NOx of 120 mg/m<sup>3</sup> as a daily average) can be optimised. A written report of the study shall be submitted to the Environment Agency for approval which shall include but not necessarily be limited to the following:</p> <ul style="list-style-type: none"> <li>A brief description of the measures installed measures at the installation to minimise NOx emissions, including details of how the reagent dosing system responds to emissions monitoring.</li> <li>The results the optimisation study including: <ul style="list-style-type: none"> <li>a description of the parameters that were varied during the optimisation e.g. ammonia or urea feed rates, physical form of urea injected, air flows, and the range over which they were varied</li> <li>the levels of NOx achieved and associated levels of ammonia and nitrous oxide emissions and reagent consumption</li> </ul> </li> </ul>	6 months following completion of commissioning

Table S1.3 Improvement programme requirements		
Reference	Requirement	Date
	<ul style="list-style-type: none"> <li>○ observed effects and predicted long-term impacts on plant operation, reliability and maintenance regime</li> <li>○ any changes to the composition of the bottom ash and boiler ash and the implications of those changes for the ability to process and use the ash, as well as for the pollution potential of the ash both during processing and its subsequent use as a secondary aggregate (if relevant)</li> <li>○ any other relevant cross-media effects</li> <li>○ a description of how the plant will be operated on an ongoing basis to minimise NOx emissions, including target emission limit values for NOx and NH<sub>3</sub></li> </ul>	
IC13a	<p>The operator shall carry out the following assessments for the discharge to water effluent from emission point S1:</p> <ul style="list-style-type: none"> <li>• TrAC water screening tests for any relevant hazardous chemical or element with Environmental Quality Standards (EQSs) or ecotoxicological properties, excluding those substances with an emission limit in Table S3.2, in line with Environment Agency guidance '<a href="#">Surface water pollution risk assessment for your environmental permit</a>'</li> <li>• modelling for any substance that does not screen out in the above screening tests. The modelling shall be in accordance with consultation with the Environment Agency's marine modelling team (<a href="mailto:marine_modelling_requests@environment-agency.gov.uk">marine_modelling_requests@environment-agency.gov.uk</a>) and should be carried out from the point of discharge from the receiving Wastewater Treatment Works.</li> </ul> <p>A full list of hazardous chemicals and elements is provided in our guidance '<a href="#">Surface water pollution risk assessment for your environmental permit</a>'. You should review the list, establish an emissions (to water) inventory and carry out the monitoring, analysis and screening for any hazardous chemical or element that you think may be present in your discharge. You must also provide a brief justification for each substance from the relevant lists that you have not included in the test (which can be presented via a table or spreadsheet).</p> <p>The screening assessment and modelling shall be based on analysis results from emissions monitoring both on samples prior to and after the on-site effluent treatment plant. The emissions monitoring and analysis shall be carried out using the methods and standards described in Environment Agency guidance on '<a href="#">Monitoring of discharges to water and sewer</a>'. A minimum of 12 samples, using an appropriate limit of detection/minimum reporting</p>	6 months following completion of commissioning



Table S1.3 Improvement programme requirements		
Reference	Requirement	Date
	<p>value, is required which must be taken over a sufficient time period to ensure that the results are representative (allowing for any fluctuations in effluent composition, particularly due to incineration of different waste types). Monitoring results and values used in the risk assessment shall not be based on any dilution of batches of effluent.</p> <p>The operator shall submit a report to the Environment Agency for assessment and written approval on the screening, monitoring and the modelling that was carried out. The report shall include but not necessarily be limited to:</p> <ul style="list-style-type: none"> <li>• Results of emissions monitoring and analysis that has been carried out, including a description of how the monitoring was carried out</li> <li>• A justification of any pollutant reduction factors that have been applied i.e. what proportion of the pollutant will be removed from the discharge by the receiving sewage treatment works</li> <li>• Results of the screening assessment</li> <li>• Results of any modelling undertaken</li> <li>• A summary of the impact on the receiving water</li> <li>• An assessment of the impact on ecological features</li> <li>• Whether on-site effluent treatment or operational improvements are required to meet any Emission Limit Values proposed in order to protect the receiving surface water receptor</li> </ul> <p>If improvements are identified see IC13b.</p>	
<b>IC13b</b>	<p>If notified by the Environment Agency after completion of IC13a, The operator shall submit to the Environment Agency for assessment and written approval, a report on what operational changes will be implemented at the facility to ensure that all proposed Emission Limit Values are met in order to protect the receiving surface water receptor.</p> <p>The report shall consider the impact assessment (as approved through improvement condition IC14a) and include but not necessarily be limited to:</p> <ul style="list-style-type: none"> <li>• A review of the techniques in place at the effluent treatment plant</li> <li>• Other relevant treatment methods</li> <li>• What other operational changes could be made to the incineration activity</li> </ul> <p>The operator shall submit a timescale for any proposed improvements and implement those improvements by the date agreed with the Environment Agency.</p>	6 months from date of approval of improvement condition IC14a

<b>Table S1.4A Pre-operational measures</b>	
<b>Reference</b>	<b>Pre-operational measures</b>
<b>PO1</b>	<p>Prior to the commencement of commissioning, the Operator shall send a summary of the site Environment Management System (EMS) to the Environment Agency and obtain the Environment Agency's written approval to the EMS summary.</p> <p>The summary shall include a copy of the full other than normal operating conditions (OTNOC) management plan which shall be prepared in accordance with BAT 18 of the BAT conclusions and include:</p> <ul style="list-style-type: none"> <li>• a list of potential OTNOC situations that are considered to be abnormal operation under the definition in Schedule 6 of this permit.</li> <li>• a definition of start-up and shut-down conditions having regard to any Environment Agency guidance on start-up and shut-down.</li> <li>• any updates on the design of critical equipment to minimise OTNOC since the permit application</li> </ul> <p>The Operator shall make available for inspection all documents and procedures which form part of the EMS. The EMS shall be developed in line with the requirements set out in Environment Agency web guide on developing a management system for environmental permits (found on <a href="http://www.gov.uk">www.gov.uk</a>) and BAT 1 of the incineration BAT conclusions. The EMS shall include the approved OTNOC management plan.</p> <p>The documents and procedures set out in the EMS shall form the written management system referenced in condition 1.1.1 (a) of the permit.</p>
<b>PO2</b>	<p>Prior to the commencement of commissioning, the Operator shall send a report to the Environment Agency, and obtain the Environment Agency's written approval to it, which will contain a comprehensive review of the options available for utilising the heat generated, including operating as CHP or supplying district heating, by the waste incineration process in order to ensure that it is recovered as far as practicable. The review shall detail any identified proposals for improving the recovery and utilisation of heat and shall provide a timetable for their implementation.</p>
<b>PO3</b>	<p>Prior to the commencement of commissioning, the Operator shall submit to the Environment Agency, and obtain the Environment Agency's written approval to it, a protocol for the sampling and testing of incinerator bottom ash for the purposes of assessing its hazard status. Sampling and testing shall be carried out in accordance with the protocol as approved.</p>
<b>PO4</b>	<p>Prior to the commencement of commissioning, the Operator shall submit to the Environment Agency, and obtain the Environment Agency's written approval to it, a written commissioning plan, including timelines for completion, for approval by the Environment Agency. The commissioning plan shall include the expected emissions to the environment during the different stages of commissioning, the expected durations of commissioning activities and the actions to be taken to protect the environment and report to the Environment Agency in the event that actual emissions exceed expected emissions. Commissioning shall be carried out in accordance with the commissioning plan as approved.</p>
<b>PO5</b>	<p>Prior to the commencement of commissioning, the Operator shall submit a written report to the Agency, and obtain the Environment Agency's written approval to it, detailing the waste acceptance procedure to be used at the site. The waste acceptance procedure shall include the process and systems by which wastes unsuitable for incineration at the site will be controlled.</p>

<b>Table S1.4A Pre-operational measures</b>	
<b>Reference</b>	<b>Pre-operational measures</b>
	The procedure shall be implemented in accordance with the written approval from the Agency.
<b>PO6</b>	Within 3 months of permit issue, the operator shall submit a written report to the Environment Agency, and obtain the Environment Agency's written approval to it, of the details of the computational fluid dynamic (CFD) modelling. The report shall explain how the furnace has been designed to comply with the residence time and temperature requirements as defined by Chapter IV and Annex VI of the IED whilst operating under normal load and the most unfavourable operating conditions (including minimum turn down and overload conditions), and that the design includes sufficient monitoring ports to support subsequent validation of these requirements during commissioning.
<b>PO7</b>	<p>At least three months before (or other date agreed in writing with the Environment Agency) the commencement of commissioning, the Operator shall submit a written report to the Environment Agency, and obtain the Environment Agency's written approval to it, specifying arrangements for continuous and periodic monitoring of emissions to air (for all monitoring points listed in table S3.1) to comply with EN 15259 and Environment Agency guidance notes on monitoring stack emissions measuring locations, techniques and standards for periodic monitoring and TGN M20 for quality assurance of CEMS. The report shall include the following:</p> <ul style="list-style-type: none"> <li>• Details of monitoring locations, access and working platforms</li> <li>• Evidence that CEMS are MCERTS certified at the appropriate range</li> <li>• Evidence that data handling and acquisition systems are MCERTS certified</li> <li>• Methods and standards for periodic monitoring</li> <li>• Procedures for the quality assurance of CEMS, which includes evidence of completion of CEMS' functional tests and setting up quality assurance level (QAL) 3 checks, prior to completing a QAL2</li> </ul>
<b>PO8</b>	At least 3 months before the commencement of commissioning (or other date agreed in writing with the Environment Agency) the Operator shall submit, for approval by the Environment Agency, a methodology (having regard to Technical Report P4-100/TR Part 2 Validation of Combustion Conditions) to verify the residence time, minimum temperature and oxygen content of the gases in the furnace whilst operating under normal load, minimum turn down and overload conditions.
<b>PO9</b>	The operator shall submit a report demonstrating that all bulk liquid storage tanks, pipelines and secondary containment been leak-tested at least 4 weeks before the start of operations.
<b>PO10</b>	At least 3 months before the commencement of commissioning (or other date agreed in writing with the Environment Agency), the Operator shall submit to the Environment Agency, and obtain the Environment Agency's written approval to it, an updated Fire Prevention Plan using final design information.
<b>PO11</b>	At least 4 weeks (or any other date as agreed with the Environment Agency) prior to the commencement of commissioning of the installation, the operator shall provide written evidence to the Environment Agency of the Technically Competent Manager (TCM) at the proposed installation. The report shall confirm that the person(s):

Table S1.4A Pre-operational measures	
Reference	Pre-operational measures
	<ul style="list-style-type: none"> <li>hold the relevant qualifications under the CIWM/WAMITAB scheme or other equivalent for the operation of hazardous waste transfer and storage activities.</li> </ul> <p>No site operations shall commence or waste accepted at the installation unless the Environment Agency has given prior written permission under this condition.</p>

## Schedule 2 – Waste types, raw materials and fuels

Table S2.1 Raw materials and fuels	
Raw materials and fuel description	Specification
Fuel Oil	< 0.1% sulphur content

Table S2.2 Permitted waste types and quantities for incineration plant (activity AR1)	
<b>Maximum quantity</b>	<b>28,500 tonnes per year</b>
	<b>For hazardous wastes listed in table S2.2 - Calorific values and pollutant composition ranges as specified in the application</b>
Waste code	Description
<b>01</b>	<b>Wastes resulting from exploration, mining, quarrying, and physical and chemical treatment of minerals</b>
<b>01 01</b>	<b>wastes from mineral excavation</b>
01 01 01	wastes from mineral metalliferous excavation
01 01 02	wastes from mineral non-metalliferous excavation
<b>01 03</b>	<b>wastes from physical and chemical processing of metalliferous minerals</b>
01 03 05*	other tailings containing hazardous substances
01 03 07*	other wastes containing hazardous substances from physical and chemical processing of metalliferous minerals
01 03 08	dusty and powdery wastes other than those mentioned in 01 03 07
01 03 09	red mud from alumina production other than the wastes mentioned in 01 03 10
01 03 10*	red mud from alumina production containing hazardous substances other than the wastes mentioned in 01 03 07
<b>01 04</b>	<b>wastes from physical and chemical processing of non-metalliferous minerals</b>
01 04 07*	wastes containing hazardous substances from physical and chemical processing of non-metalliferous minerals
01 04 08	waste gravel and crushed rocks other than those mentioned in 01 04 07
01 04 09	waste sand and clays
01 04 10	dusty and powdery wastes other than those mentioned in 01 04 07
01 04 11	wastes from potash and rock salt processing other than those mentioned in 01 04 07
01 04 12	tailings and other wastes from washing and cleaning of minerals other than those mentioned in 01 04 07 and 01 04 11
01 04 13	wastes from stone cutting and sawing other than those mentioned in 01 04 07
<b>01 05</b>	<b>drilling muds and other drilling wastes</b>
01 05 04	freshwater drilling muds and wastes
01 05 05*	oil-containing drilling muds and wastes
01 05 06*	drilling muds and other drilling wastes containing hazardous substances
01 05 07	barite-containing drilling muds and wastes other than those mentioned in 01 05 05 and 01 05 06

01 05 08	chloride-containing drilling muds and wastes other than those mentioned in 01 05 05 and 01 05 06
<b>02</b>	<b>Wastes from agriculture, horticulture, aquaculture, forestry, hunting and fishing, food preparation and processing</b>
<b>02 01</b>	<b>wastes from agriculture, horticulture, aquaculture, forestry, hunting and fishing</b>
02 01 01	sludges from washing and cleaning
02 01 02	animal-tissue waste
02 01 03	plant-tissue waste
02 01 04	waste plastics (except packaging)
02 01 06	animal faeces, urine and manure (including spoiled straw), effluent, collected separately and treated off-site
02 01 07	wastes from forestry
02 01 08*	agrochemical waste containing hazardous substances
02 01 09	agrochemical waste other than those mentioned in 02 01 08
02 01 10	waste metal
<b>02 02</b>	<b>wastes from the preparation and processing of meat, fish and other foods of animal origin</b>
02 02 01	sludges from washing and cleaning
02 02 02	animal-tissue waste
02 02 03	materials unsuitable for consumption or processing
02 02 04	sludges from on-site effluent treatment
<b>02 03</b>	<b>wastes from fruit, vegetables, cereals, edible oils, cocoa, coffee, tea and tobacco preparation and processing; conserve production; yeast and yeast extract production, molasses preparation and fermentation</b>
02 03 01	sludges from washing, cleaning, peeling, centrifuging and separation
02 03 02	wastes from preserving agents
02 03 03	wastes from solvent extraction
02 03 04	materials unsuitable for consumption or processing
02 03 05	sludges from on-site effluent treatment
<b>02 04</b>	<b>wastes from sugar processing</b>
02 04 01	soil from cleaning and washing beet
02 04 02	off-specification calcium carbonate
02 04 03	sludges from on-site effluent treatment
<b>02 05</b>	<b>wastes from the dairy products industry</b>
02 05 01	materials unsuitable for consumption or processing
02 05 02	sludges from on-site effluent treatment
<b>02 06</b>	<b>wastes from the baking and confectionery industry</b>
02 06 01	materials unsuitable for consumption or processing
02 06 02	wastes from preserving agents
02 06 03	sludges from on-site effluent treatment

<b>02 07</b>	<b>wastes from the production of alcoholic and non-alcoholic beverages (except coffee, tea and cocoa)</b>
02 07 01	wastes from washing, cleaning and mechanical reduction of raw materials
02 07 02	wastes from spirits distillation
02 07 03	wastes from chemical treatment
02 07 04	materials unsuitable for consumption or processing
02 07 05	sludges from on-site effluent treatment
<b>03</b>	<b>Wastes from wood processing and the production of panels and furniture, pulp, paper and cardboard</b>
<b>03 01</b>	<b>wastes from wood processing and the production of panels and furniture</b>
03 01 01	waste bark and cork that is not suitable for processing in an alternative waste management facility due to contamination
03 01 04*	sawdust, shavings, cuttings, wood, particle board and veneer containing dangerous substances
03 01 05	sawdust, shavings, cuttings, wood, particle board and veneer other than those mentioned in 03 01 04
<b>03 02</b>	<b>wastes from wood preservation</b>
03 02 01*	non-halogenated organic wood preservatives
03 02 02*	organochlorinated wood preservatives
03 02 03*	organometallic wood preservatives
03 02 04*	inorganic wood preservatives
03 02 05*	other wood preservatives containing hazardous substances
<b>03 03</b>	<b>wastes from pulp, paper and cardboard production and processing</b>
03 03 01	waste bark and wood
03 03 02	green liquor sludge (from recovery of cooking liquor)
03 03 05	de-inking sludges from paper recycling
03 03 07	mechanically separated rejects from pulping of waste paper and cardboard
03 03 08	wastes from sorting of paper and cardboard destined for recycling
03 03 09	lime mud waste
03 03 10	fibre rejects, fibre-, filler- and coating-sludges from mechanical separation
03 03 11	sludges from on-site effluent treatment other than those mentioned in 03 03 10
<b>04</b>	<b>Wastes from the leather, fur and textile industries</b>
<b>04 01</b>	<b>wastes from the leather and fur industry</b>
04 01 01	fleshings and lime split wastes
04 01 02	liming waste
04 01 03*	degreasing wastes containing solvents without a liquid phase
04 01 04	tanning liquor containing chromium
04 01 05	tanning liquor free of chromium
04 01 06	sludges, in particular from on-site effluent treatment containing chromium that
04 01 07	sludges, in particular from on-site effluent treatment free of chromium

04 01 08	waste tanned leather (blue sheeting's, shavings, cuttings, buffing dust) containing chromium
04 01 09	wastes from dressing and finishing
<b>04 02</b>	<b>wastes from the textile industry</b>
04 02 09	wastes from composite materials (impregnated textile, elastomer, plastomer)
04 02 10	organic matter from natural products (for example grease, wax)
04 02 14*	wastes from finishing containing organic solvents
04 02 15	wastes from finishing other than those mentioned in 04 02 14
04 02 16*	dyestuffs and pigments containing hazardous substances
04 02 17	dyestuffs and pigments other than those mentioned in 04 02 16
04 02 19*	sludges from on-site effluent treatment containing hazardous substances
04 02 20	sludges from on-site effluent treatment other than those mentioned in 04 02 19
04 02 21	wastes from unprocessed textile fibres
04 02 22	wastes from processed textile fibres
<b>05</b>	<b>Wastes from petroleum refining, natural gas purification and pyrolytic treatment of coal</b>
<b>05 01</b>	<b>wastes from petroleum refining</b>
05 01 02*	desalter sludges
05 01 03*	tank bottom sludges
05 01 04*	acid alkyl sludges
05 01 05*	oil spills
05 01 06*	oily sludges from maintenance operations of the plant or equipment
05 01 07*	acid tars
05 01 08*	other tars
05 01 09*	sludges from on-site effluent treatment containing hazardous substances
05 01 10	sludges from on-site effluent treatment other than those mentioned in 05 01 09
05 01 11*	wastes from cleaning of fuels with bases
05 01 12*	oil containing acids
05 01 13	boiler feedwater sludges
05 01 14	wastes from cooling columns
05 01 15*	spent filter clays
05 01 17	bitumen
<b>05 06</b>	<b>wastes from the pyrolytic treatment of coal</b>
05 06 01*	acid tars
05 06 03*	other tars
05 06 04	waste from cooling columns
<b>06</b>	<b>Wastes from inorganic chemical processes</b>
<b>06 01</b>	<b>wastes from the manufacture, formulation, supply and use (MFSU) of acids</b>
06 01 01*	sulphuric acid and sulphurous acid
06 01 02*	hydrochloric acid
06 01 03*	hydrofluoric acid



06 01 04*	phosphoric and phosphorous acid
06 01 05*	nitric acid and nitrous acid
06 01 06*	other acids
<b>06 02</b>	<b>wastes from the MFSU of bases</b>
06 02 01*	calcium hydroxide
06 02 03*	ammonium hydroxide
06 02 04*	sodium and potassium hydroxide
06 02 05*	other bases
<b>06 03</b>	<b>wastes from the MFSU of salts and their solutions and metallic oxides</b>
06 03 11*	solid salts and solutions containing cyanides
06 03 13*	solid salts and solutions containing heavy metals
06 03 14	solid salts and solutions other than those mentioned in 06 03 11 and 06 03 13
06 03 15*	metallic oxides containing heavy metals
06 03 16	metallic oxides other than those mentioned in 06 03 15
<b>06 04</b>	<b>metal-containing wastes other than those mentioned in 06 03</b>
06 04 03*	wastes containing arsenic
06 04 05*	wastes containing other heavy metals
<b>06 05</b>	<b>sludges from on-site effluent treatment</b>
06 05 02*	sludges from on-site effluent treatment containing hazardous substances
06 05 03	sludges from on-site effluent treatment other than those mentioned in 06 05 02
<b>06 08</b>	<b>wastes from the MFSU of silicon and silicon derivatives</b>
06 08 02*	waste containing hazardous chlorosilanes
<b>06 09</b>	<b>wastes from the MFSU of phosphorous chemicals and phosphorous chemical processes</b>
06 09 03*	calcium-based reaction wastes containing or contaminated with hazardous substances
06 09 04	calcium-based reaction wastes other than those mentioned in 06 09 03
<b>06 10</b>	<b>wastes from the MFSU of nitrogen chemicals, nitrogen chemical processes and fertiliser manufacture</b>
06 10 02*	wastes containing hazardous substances
<b>06 11</b>	<b>wastes from the manufacture of inorganic pigments and opacifiers</b>
06 11 01	calcium-based reaction wastes from titanium dioxide production
<b>06 13</b>	<b>wastes from inorganic chemical processes not otherwise specified</b>
06 13 01*	inorganic plant protection products, wood-preserving agents and other biocides
06 13 02*	spent activated carbon (except 06 07 02)
06 13 03	carbon black
06 13 04*	wastes from asbestos processing
06 13 05*	soot
<b>07</b>	<b>Wastes from organic chemical processes</b>
<b>07 01</b>	<b>wastes from the manufacture, formulation, supply and use (MFSU) of basic organic chemicals</b>

07 01 01*	aqueous washing liquids and mother liquors
07 01 03*	organic halogenated solvents, washing liquids and mother liquors
07 01 04*	other organic solvents, washing liquids and mother liquors
07 01 07*	halogenated still bottoms and reaction residues
07 01 08*	other still bottoms and reaction residues
07 01 09*	halogenated filter cakes and spent absorbents
07 01 10*	other filter cakes and spent absorbents
07 01 11*	sludges from on-site effluent treatment containing hazardous substances
07 01 12	sludges from on-site effluent treatment other than those mentioned in 07 01 11
<b>07 02</b>	<b>wastes from the MFSU of plastics, synthetic rubber and man-made fibres</b>
07 02 01*	aqueous washing liquids and mother liquors
07 02 03*	organic halogenated solvents, washing liquids and mother liquors
07 02 04*	other organic solvents, washing liquids and mother liquors
07 02 07*	halogenated still bottoms and reaction residues
07 02 08*	other still bottoms and reaction residues
07 02 09*	halogenated filter cakes and spent absorbents
07 02 10*	other filter cakes and spent absorbents
07 02 11*	sludges from on-site effluent treatment containing hazardous substances
07 02 12	sludges from on-site effluent treatment other than those mentioned in 07 02 11
07 02 13	waste plastic
07 02 14*	wastes from additives containing hazardous substances
07 02 15	wastes from additives other than those mentioned in 07 02 14
07 02 16*	wastes containing silicones that are not suitable for processing in an alternative waste management facility due to contamination
07 02 17	Waste containing silicones other than those mentioned in 07 02 16 that are not suitable for processing in an alternative waste management facility due to contamination
<b>07 03</b>	<b>wastes from the MFSU of organic dyes and pigments (except 06 11)</b>
07 03 01*	aqueous washing liquids and mother liquors
07 03 03*	organic halogenated solvents, washing liquids and mother liquors
07 03 04*	other organic solvents, washing liquids and mother liquors
07 03 07*	halogenated still bottoms and reaction residues
07 03 08*	other still bottoms and reaction residues
07 03 09*	halogenated filter cakes and spent absorbents
07 03 10*	other filter cakes and spent absorbents
07 03 11*	sludges from on-site effluent treatment containing hazardous substances
07 03 12	sludges from on-site effluent treatment other than those mentioned in 07 03 11 that are not suitable for processing in an alternative waste management facility due to contamination
<b>07 04</b>	<b>wastes from the MFSU of organic plant protection products (except 02 01 08 and 02 01 09), wood preserving agents (except 03 02) and other biocides</b>

07 04 01*	aqueous washing liquids and mother liquors
07 04 03*	organic halogenated solvents, washing liquids and mother liquors
07 04 04*	other organic solvents, washing liquids and mother liquors
07 04 07*	halogenated still bottoms and reaction residues
07 04 08*	other still bottoms and reaction residues
07 04 09*	halogenated filter cakes and spent absorbents
07 04 10*	other filter cakes and spent absorbents
07 04 11*	sludges from on-site effluent treatment containing hazardous substances
07 04 12	sludges from on-site effluent treatment other than those mentioned in 07 04 11
07 04 13*	solid wastes containing hazardous substances
<b>07 05</b>	<b>wastes from the MFSU of pharmaceuticals</b>
07 05 01*	aqueous washing liquids and mother liquors
07 05 03*	organic halogenated solvents, washing liquids and mother liquors
07 05 04*	other organic solvents, washing liquids and mother liquors
07 05 07*	halogenated still bottoms and reaction residues
07 05 08*	other still bottoms and reaction residues
07 05 09*	halogenated filter cakes and spent absorbents
07 05 10*	other filter cakes and spent absorbents
07 05 11*	sludges from on-site effluent treatment containing hazardous substances
07 05 12	sludges from on-site effluent treatment other than those mentioned in 07 05 11
07 05 13*	solid wastes containing hazardous substances
07 05 14	solid wastes other than those mentioned in 07 05 13
<b>07 06</b>	<b>wastes from the MFSU of fats, grease, soaps, detergents, disinfectants and cosmetics</b>
07 06 01*	aqueous washing liquids and mother liquors
07 06 03*	organic halogenated solvents, washing liquids and mother liquors
07 06 04*	other organic solvents, washing liquids and mother liquors
07 06 07*	halogenated still bottoms and reaction residues
07 06 08*	other still bottoms and reaction residues
07 06 09*	halogenated filter cakes and spent absorbents
07 06 10*	other filter cakes and spent absorbents
07 06 11*	sludges from on-site effluent treatment containing hazardous substances
07 06 12	sludges from on-site effluent treatment other than those mentioned in 07 06 11
<b>07 07</b>	<b>wastes from the MFSU of fine chemicals and chemical products not otherwise specified</b>
07 07 01*	aqueous washing liquids and mother liquors
07 07 03*	organic halogenated solvents, washing liquids and mother liquors
07 07 04*	other organic solvents, washing liquids and mother liquors
07 07 07*	halogenated still bottoms and reaction residues
07 07 08*	other still bottoms and reaction residues
07 07 09*	halogenated filter cakes and spent absorbents

07 07 10*	other filter cakes and spent absorbents
07 07 11*	sludges from on-site effluent treatment containing hazardous substances
07 07 12	sludges from on-site effluent treatment other than those mentioned in 07 07 11 that are not suitable for processing in an alternative waste management facility due to contamination
<b>08</b>	<b>Wastes from the manufacture, formulation, supply and use (MFSU) of coatings (paints, varnishes and vitreous enamels), adhesives, sealants and printing inks</b>
<b>08 01</b>	<b>wastes from MFSU and removal of paint and varnish</b>
08 01 11*	waste paint and varnish containing organic solvents or other hazardous substances
08 01 12	waste paint and varnish other than those mentioned in 08 01 11
08 01 13*	sludges from paint or varnish containing organic solvents or other hazardous substances
08 01 14	sludges from paint or varnish other than those mentioned in 08 01 13
08 01 15*	aqueous sludges containing paint or varnish containing organic solvents or other hazardous substances
08 01 16	aqueous sludges containing paint or varnish other than those mentioned in 08 01 15
08 01 17*	wastes from paint or varnish removal containing organic solvents or other hazardous substances
08 01 18	wastes from paint or varnish removal other than those mentioned in 08 01 17
08 01 19*	aqueous suspensions containing paint or varnish containing organic solvents or other hazardous substances
08 01 20	aqueous suspensions containing paint or varnish other than those mentioned in 08 01 19
08 01 21*	waste paint or varnish remover
<b>08 02</b>	<b>wastes from MFSU of other coatings (including ceramic materials)</b>
08 02 01	waste coating powders
08 02 02	aqueous sludges containing ceramic materials
08 02 03	aqueous suspensions containing ceramic materials
<b>08 03</b>	<b>wastes from MFSU of printing inks</b>
08 03 07	aqueous sludges containing ink
08 03 08	aqueous liquid waste containing ink
08 03 12*	waste ink containing hazardous substances
08 03 13	waste ink other than those mentioned in 08 03 12
08 03 14*	ink sludges containing hazardous substances
08 03 15	ink sludges other than those mentioned in 08 03 14
08 03 16*	waste etching solutions
08 03 17*	waste printing toner containing hazardous substances
08 03 18	waste printing toner other than those mentioned in 08 03 17
08 03 19*	disperse oil
<b>08 04</b>	<b>wastes from MFSU of adhesives and sealants (including water proofing products)</b>
08 04 09*	waste adhesives and sealants containing organic solvents or other hazardous substances

08 04 10	waste adhesives and sealants other than those mentioned in 08 04 09
08 04 11*	adhesive and sealant sludges containing organic solvents or other hazardous substances
08 04 12	adhesive and sealant sludges other than those mentioned in 08 04 11 that are not suitable for processing in an alternative waste management facility due to contamination
08 04 13*	aqueous sludges containing adhesives or sealants containing organic solvents or other hazardous substances
08 04 14	aqueous sludges containing adhesives or sealants other than those mentioned in 08 04 13
08 04 15*	aqueous liquid waste containing adhesives or sealants containing organic solvents or other hazardous substances
08 04 16	aqueous liquid waste containing adhesives or sealants other than those mentioned in 08 04 15
08 04 17*	rosin oil
<b>08 05</b>	<b>wastes not otherwise specified in 08</b>
08 05 01*	waste isocyanates
<b>09</b>	<b>Wastes from the photographic industry</b>
<b>09 01</b>	<b>wastes from the photographic industry</b>
09 01 01*	water-based developer and activator solutions
09 01 02*	water-based offset plate developer solutions
09 01 03*	solvent-based developer solutions
09 01 04*	fixer solutions
09 01 05*	bleach solutions and bleach fixer solutions
09 01 06*	wastes containing silver from on-site treatment of photographic wastes
09 01 07	photographic film and paper containing silver or silver compounds
09 01 08	photographic film and paper free of silver or silver compounds
09 01 10	single-use cameras without batteries
09 01 11*	single-use cameras containing batteries included in 16 06 01, 16 06 02 or 16 06 03
09 01 12	single-use cameras containing batteries other than those mentioned in 09 01 11
09 01 13*	aqueous liquid waste from on-site reclamation of silver other than those mentioned in 09 01 06
<b>10</b>	<b>Wastes from thermal processes</b>
<b>10 01</b>	<b>wastes from power stations and other combustion plants (except 19)</b>
10 01 01	bottom ash, slag and boiler dust (excluding boiler dust mentioned in 10 01 04)
10 01 04*	oil fly ash and boiler dust
10 01 14*	bottom ash, slag and boiler dust from co-incineration containing hazardous substances
10 01 16*	fly ash from co-incineration containing hazardous substances
10 01 18*	wastes from gas cleaning containing hazardous substances
10 01 20*	sludges from on-site effluent treatment containing hazardous substances
10 01 21	sludges from on-site effluent treatment other than those mentioned in 10 01 20
10 01 22*	aqueous sludges from boiler cleansing containing hazardous substances

10 01 23	aqueous sludges from boiler cleansing other than those mentioned in 10 01 22
<b>10 02</b>	<b>wastes from the iron and steel industry</b>
10 02 01	wastes from the processing of slag
10 02 02	unprocessed slag
10 02 07*	solid wastes from gas treatment containing hazardous substances
10 02 10	mill scales
10 02 11*	wastes from cooling-water treatment containing oil
10 02 12	wastes from cooling-water treatment other than those mentioned in 10 02 11
10 02 13*	sludges and filter cakes from gas treatment containing hazardous substances
10 02 14	sludges and filter cakes from gas treatment other than those mentioned in 10 02 13
10 02 15	other sludges and filter cakes that are not suitable for processing in an alternative waste management facility due to contamination
<b>10 03</b>	<b>wastes from aluminium thermal metallurgy</b>
10 03 04*	primary production slags
10 03 15*	skimmings that are flammable or emit, upon contact with water, flammable gases in hazardous quantities
10 03 17*	tar-containing wastes from anode manufacture
10 03 19*	flue-gas dust containing hazardous substances
10 03 21*	other particulates and dust (including ball-mill dust) containing hazardous substances
10 03 22	other particulates and dust (including ball-mill dust) other than those mentioned in 10 03 21
10 03 23*	solid wastes from gas treatment containing hazardous substances
10 03 25*	sludges and filter cakes from gas treatment containing hazardous substances
10 03 27*	wastes from cooling-water treatment containing oil
10 03 29*	wastes from treatment of salt slags and black drosses containing hazardous substances
<b>10 08</b>	<b>wastes from other non-ferrous thermal metallurgy</b>
10 08 12*	tar-containing wastes from anode manufacture
10 08 15*	flue-gas dust containing hazardous substances
10 08 17*	sludges and filter cakes from flue-gas treatment containing hazardous substances
10 08 18	sludges and filter cakes from flue-gas treatment other than those mentioned in 10 08 17
10 08 19*	wastes from cooling-water treatment containing oil
10 08 20	wastes from cooling-water treatment other than those mentioned in 10 08 19
<b>10 09</b>	<b>wastes from casting of ferrous pieces</b>
10 09 05*	casting cores and moulds which have not undergone pouring containing hazardous substances
10 09 07*	casting cores and moulds which have undergone pouring containing hazardous substances
10 09 11*	other particulates containing hazardous substances
10 09 13*	waste binders containing hazardous substances
10 09 14	waste binders other than those mentioned in 10 09 13

10 09 15*	waste crack-indicating agent containing hazardous substances
10 09 16	waste crack-indicating agent other than those mentioned in 10 09 15
<b>10 10</b>	<b>wastes from casting of non-ferrous pieces</b>
10 10 05*	casting cores and moulds which have not undergone pouring, containing hazardous substances
10 10 07*	casting cores and moulds which have undergone pouring, containing hazardous substances
10 10 09*	flue-gas dust containing hazardous substances
10 10 11*	other particulates containing hazardous substances
10 10 13*	waste binders containing hazardous substances
10 10 14	waste binders other than those mentioned in 10 10 13
10 10 15*	waste crack-indicating agent containing hazardous substances
10 10 16	waste crack-indicating agent other than those mentioned in 10 10 15
<b>10 11</b>	<b>wastes from manufacture of glass and glass products</b>
10 11 09*	waste preparation mixture before thermal processing, containing hazardous substances
10 11 13*	glass-polishing and -grinding sludge containing hazardous substances
10 11 15*	solid wastes from flue-gas treatment containing hazardous substances
10 11 17*	sludges and filter cakes from flue-gas treatment containing hazardous substances
10 11 19*	solid wastes from on-site effluent treatment containing hazardous substances
<b>11</b>	<b>Wastes from chemical surface treatment and coating of metals and other materials; non-ferrous hydro-metallurgy</b>
<b>11 01</b>	<b>wastes from chemical surface treatment and coating of metals and other materials (for example galvanic processes, zinc coating processes, pickling processes, etching, phosphating, alkaline degreasing, anodising)</b>
11 01 05*	pickling acids
11 01 06*	acids not otherwise specified
11 01 07*	pickling bases
11 01 08*	phosphatising sludges
11 01 09*	sludges and filter cakes containing hazardous substances
11 01 10	sludges and filter cakes other than those mentioned in 11 01 09
11 01 11*	aqueous rinsing liquids containing dangerous substances
11 01 12	aqueous rinsing liquids other than those mentioned in 11 01 11
11 01 13*	degreasing wastes containing hazardous substances
11 01 14	degreasing wastes other than those mentioned in 11 01 13
11 01 15*	eluate and sludges from membrane systems or ion exchange systems containing hazardous substances
11 01 16*	saturated or spent ion exchange resins
<b>11 02</b>	<b>wastes from non-ferrous hydrometallurgical processes</b>
11 02 02*	sludges from zinc hydrometallurgy (including jarosite, goethite)
11 02 03	wastes from the production of anodes for aqueous electrolytical processes
11 02 05*	wastes from copper hydrometallurgical processes containing hazardous substances

11 02 06	wastes from copper hydrometallurgical processes other than those mentioned in 11 02 05
<b>11 03</b>	<b>sludges and solids from tempering processes</b>
11 03 01*	wastes containing cyanide
11 03 02*	other wastes salts and sludges that don't contain cyanide, such as nitrates and nitrites.
<b>12</b>	<b>Wastes from shaping and physical and mechanical surface treatment of metals and plastics</b>
<b>12 01</b>	<b>wastes from shaping and physical and mechanical surface treatment of metals and plastics</b>
12 01 01	ferrous metal filings and turnings
12 01 02	ferrous metal dust and particles
12 01 03	non-ferrous metal filings and turnings
12 01 04	non-ferrous metal dust and particles
12 01 05	plastics shavings and turnings
12 01 06*	mineral-based machining oils containing halogens (except emulsions and solutions)
12 01 07*	mineral-based machining oils free of halogens (except emulsions and solutions)
12 01 08*	machining emulsions and solutions containing halogens
12 01 09*	machining emulsions and solutions free of halogens
12 01 10*	synthetic machining oils
12 01 12*	spent waxes and fats
12 01 13	welding wastes
12 01 14*	machining sludges containing hazardous substances
12 01 15	machining sludges other than those mentioned in 12 01 14
12 01 16*	waste blasting material containing hazardous substances
12 01 17	waste blasting material other than those mentioned in 12 01 16
12 01 18*	metal sludge (grinding, honing and lapping sludge) containing oil
12 01 19*	readily biodegradable machining oil
12 01 20*	spent grinding bodies and grinding materials containing hazardous substances
12 01 21	spent grinding bodies and grinding materials other than those mentioned in 12 01 20
<b>12 03</b>	<b>wastes from water and steam degreasing processes (except 11)</b>
12 03 01*	aqueous washing liquids
12 03 02*	steam degreasing wastes
<b>13</b>	<b>Oil wastes and wastes of liquid fuels (except edible oils, and those in chapters 05, 12 and 19)</b>
<b>13 01</b>	<b>waste hydraulic oils</b>
13 01 01*	hydraulic oils, containing PCBs
13 01 04*	chlorinated emulsions
13 01 05*	non-chlorinated emulsions
13 01 09*	mineral-based chlorinated hydraulic oils
13 01 10*	mineral based non-chlorinated hydraulic oils
13 01 11*	synthetic hydraulic oils



13 01 12*	readily biodegradable hydraulic oils
13 01 13*	other hydraulic oils
<b>13 02</b>	<b>waste engine, gear and lubricating oils</b>
13 02 04*	mineral-based chlorinated engine, gear and lubricating oils
13 02 05*	mineral-based non-chlorinated engine, gear and lubricating oils
13 02 06*	synthetic engine, gear and lubricating oils
13 02 07*	readily biodegradable engine, gear and lubricating oils
13 02 08*	other engine, gear and lubricating oils
<b>13 03</b>	<b>waste insulating and heat transmission oils</b>
13 03 01*	insulating or heat transmission oils containing PCBs
13 03 06*	mineral-based chlorinated insulating and heat transmission oils other than those mentioned in 13 03 01
13 03 07*	mineral-based non-chlorinated insulating and heat transmission oils
13 03 08*	synthetic insulating and heat transmission oils
13 03 09*	readily biodegradable insulating and heat transmission oils
13 03 10*	other insulating and heat transmission oils
<b>13 04</b>	<b>bilge oils</b>
13 04 01*	bilge oils from inland navigation
13 04 02*	bilge oils from jetty sewers
13 04 03*	bilge oils from other navigation
<b>13 05</b>	<b>oil / water separator contents</b>
13 05 06*	oil from oil/water separators
13 05 07*	oily water from oil/water separators
13 05 08*	mixtures of wastes from grit chambers and oil/water separators
<b>13 07</b>	<b>wastes of liquid fuels</b>
13 07 01*	fuel oil and diesel
13 07 02*	petrol
13 07 03*	other fuels (including mixtures)
<b>13 08</b>	<b>oil wastes not otherwise specified</b>
13 08 01*	desalter sludges or emulsions
13 08 02*	other emulsions
<b>14</b>	<b>Waste organic solvents, refrigerants and propellants (except 07 and 08)</b>
<b>14 06</b>	<b>waste organic solvents, refrigerants and foam/aerosol propellants</b>
14 06 01*	chlorofluorocarbons, HCFC, HFC
14 06 02*	other halogenated solvents and solvent mixtures
14 06 03*	other solvents and solvent mixtures
14 06 04*	sludges or solid wastes containing halogenated solvents
14 06 05*	sludges or solid wastes containing other solvents
<b>15</b>	<b>Waste packaging, absorbents, wiping cloths, filter materials and protective clothing not otherwise specified</b>
<b>15 01</b>	<b>packaging (including separately collected municipal packaging waste)</b>

15 01 01	paper and cardboard packaging
15 01 02	plastic packaging
15 01 03	wooden packaging
15 01 04	metallic packaging
15 01 05	composite packaging
15 01 06	mixed packaging
15 01 07	glass packaging
15 01 09	textile packaging
15 01 10*	packaging containing residues of or contaminated by hazardous substances
15 01 11*	metallic packaging containing a hazardous solid porous matrix (for example asbestos), including empty pressure containers
<b>15 02</b>	<b>absorbents, filter materials, wiping cloths and protective clothing</b>
15 02 02*	absorbents, filter materials (including oil filters not otherwise specified), wiping cloths, protective clothing contaminated by hazardous substances
15 02 03	absorbents, filter materials, wiping cloths and protective clothing other than those mentioned in 15 02 02
<b>16</b>	<b>Wastes not otherwise specified in the list</b>
<b>16 01</b>	<b>end-of-life vehicles from different means of transport (including off-road machinery) and wastes from dismantling of end-of-life vehicles and vehicle maintenance (except 13, 14, 16 06 and 16 08)</b>
16 01 03	end-of-life tyres
16 01 07*	oil filters
16 01 09*	components containing PCBs
16 01 10*	explosive components (for example air bags)
16 01 11*	brake pads containing asbestos
16 01 12	brake pads other than those mentioned in 16 01 11
16 01 13*	brake fluids
16 01 14*	antifreeze fluids containing hazardous substances
16 01 15	antifreeze fluids other than those mentioned in 16 01 14
16 01 17	ferrous metal
16 01 18	non-ferrous metal
16 01 19	plastic
16 01 20	glass
16 01 21*	hazardous components other than those mentioned in 16 01 07 to 16 01 11 and 16 01 13 and 16 01 14
<b>16 02</b>	<b>wastes from electrical and electronic equipment</b>
16 02 09*	transformers and capacitors containing PCBs
16 02 10*	discarded equipment containing or contaminated by PCBs other than those mentioned in 16 02 09
16 02 11*	discarded equipment containing chlorofluorocarbons, HCFC, HFC
16 02 12*	discarded equipment containing free asbestos
16 02 13*	discarded equipment containing hazardous components other than those mentioned in 16 02 09 to 16 02 12

16 02 14	discarded equipment other than those mentioned in 16 02 09 to 16 02 13
16 02 15*	hazardous components removed from discarded equipment
16 02 16	components removed from discarded equipment other than those mentioned in 16 02 15
<b>16 03</b>	<b>off-specification batches and unused products</b>
16 03 03*	inorganic wastes containing hazardous substances
16 03 04	inorganic wastes other than those mentioned in 16 03 03
16 03 05*	organic wastes containing hazardous substances
16 03 06	organic wastes other than those mentioned in 16 03 05
<b>16 04</b>	<b>waste explosives</b>
16 04 01*	waste ammunition
16 04 02*	fireworks wastes
16 04 03*	other waste explosives
<b>16 05</b>	<b>gases in pressure containers and discarded chemicals</b>
16 05 04*	gases in pressure containers (including halons) containing hazardous substances
16 05 05	gases in pressure containers other than those mentioned in 16 05 04 that require high temperature incineration
16 05 06*	laboratory chemicals, consisting of or containing hazardous substances, including mixtures of laboratory chemicals
16 05 07*	discarded inorganic chemicals consisting of or containing hazardous substances
16 05 08*	discarded organic chemicals consisting of or containing hazardous substances
16 05 09	discarded chemicals other than those mentioned in 16 05 06, 16 05 07 or 16 05 08
<b>16 06</b>	<b>batteries and accumulators</b>
16 06 01*	lead batteries
16 06 02*	Ni-Cd batteries
16 06 04	alkaline batteries (except 16 06 03)
16 06 05	other batteries and accumulators
16 06 06*	separately collected electrolyte from batteries and accumulators
<b>16 07</b>	<b>wastes from transport tank, storage tank and barrel cleaning (except 05 and 13)</b>
16 07 08*	wastes containing oil
16 07 09*	wastes containing other hazardous substances
<b>16 08</b>	<b>spent catalysts</b>
16 08 01	spent catalysts containing gold, silver, rhenium, rhodium, palladium, iridium or platinum (except 16 08 07)
16 08 02*	spent catalysts containing hazardous transition metals or hazardous transition metal compounds
16 08 03	spent catalysts containing transition metals or transition metal compounds not otherwise specified
16 08 04	spent fluid catalytic cracking catalysts (except 16 08 07)
16 08 05*	spent catalysts containing phosphoric acid
16 08 06*	spent liquids used as catalysts

16 08 07*	spent catalysts contaminated with hazardous substances
<b>16 09</b>	<b>oxidising substances</b>
16 09 01*	permanganates, for example potassium permanganate
16 09 02*	chromates, for example potassium chromate, potassium or sodium dichromate
16 09 03*	peroxides, for example hydrogen peroxide
16 09 04*	oxidising substances, not otherwise specified
<b>16 10</b>	<b>aqueous liquid wastes destined for off-site treatment</b>
16 10 01*	aqueous liquid wastes containing hazardous substances
16 10 02	aqueous liquid wastes other than those mentioned in 16 10 01
16 10 03*	aqueous concentrates containing hazardous substances
16 10 04	aqueous concentrates other than those mentioned in 16 10 03
<b>16 11</b>	<b>waste linings and refractories</b>
16 11 01*	carbon-based linings and refractories from metallurgical processes containing hazardous substances
16 11 02	carbon-based linings and refractories from metallurgical processes others than those mentioned in 16 11 01
16 11 03*	other linings and refractories from metallurgical processes containing hazardous substances
16 11 04	other linings and refractories from metallurgical processes other than those mentioned in 16 11 03
16 11 05*	linings and refractories from non-metallurgical processes containing hazardous substances
16 11 06	linings and refractories from non-metallurgical processes others than those mentioned in 16 11 05
<b>17</b>	<b>Construction and demolition wastes (including excavated soil from contaminated sites)</b>
<b>17 01</b>	<b>concrete, bricks, tiles and ceramics</b>
17 01 01	Concrete
17 01 02	Bricks
17 01 03	tiles and ceramics
17 01 06*	mixtures of, or separate fractions of concrete, bricks, tiles and ceramics containing hazardous substances
17 01 07	mixtures of concrete, bricks, tiles and ceramics other than those mentioned in 17 01 06
<b>17 02</b>	<b>wood, glass and plastic</b>
17 02 01	Wood
17 02 02	Glass
17 02 03	Plastic
17 02 04*	glass, plastic and wood containing or contaminated with hazardous substances
<b>17 03</b>	<b>bituminous mixtures, coal tar and tarred products</b>
17 03 01*	bituminous mixtures containing coal tar
17 03 02	bituminous mixtures other than those mentioned in 17 03 01
17 03 03*	coal tar and tarred products

<b>17 04</b>	<b>metals (including their alloys)</b>
17 04 01	copper, bronze, brass
17 04 02	Aluminium
17 04 03	Lead
17 04 04	Zinc
17 04 05	iron and steel
17 04 06	Tin
17 04 07	mixed metals
17 04 09*	metal waste contaminated with hazardous substances
17 04 10*	cables containing oil, coal tar and other hazardous substances
17 04 11	cables other than those mentioned in 17 04 10
<b>17 05</b>	<b>soil (including excavated soil from contaminated sites), stones and dredging spoil</b>
17 05 03*	soil and stones containing hazardous substances
17 05 04	soil and stones other than those mentioned in 17 05 03
17 05 05*	dredging spoil containing hazardous substances
17 05 06	dredging spoil other than those mentioned in 17 05 05
17 05 07*	track ballast containing hazardous substances
17 05 08	track ballast other than those mentioned in 17 05 07
<b>17 06</b>	<b>insulation materials and asbestos-containing construction materials</b>
17 06 01*	insulation materials containing asbestos
17 06 03*	other insulation materials consisting of or containing hazardous substances
17 06 04	insulation materials other than those mentioned in 17 06 01 and 17 06 03
17 06 05*	construction materials containing asbestos
<b>17 08</b>	<b>gypsum-based construction material</b>
17 08 01*	gypsum-based construction materials contaminated with hazardous substances
17 08 02	gypsum-based construction materials other than those mentioned in 17 08 01
<b>17 09</b>	<b>other construction and demolition wastes</b>
17 09 02*	construction and demolition wastes containing PCB (for example PCB- containing sealants, PCB-containing resin-based floorings, PCB-containing sealed glazing units, PCB-containing capacitors)
17 09 03*	other construction and demolition wastes (including mixed wastes) containing hazardous substances
17 09 04	mixed construction and demolition wastes other than those mentioned in 17 09 01, 17 09 02 and 17 09 03
<b>18</b>	<b>Wastes from human or animal health care and/or related research (except kitchen and restaurant wastes not arising from immediate health care)</b>
<b>18 01</b>	<b>wastes from natal care, diagnosis, treatment or prevention of disease in humans</b>
18 01 01	non-infectious sharps, not contaminated with chemicals or medicines
18 01 01 and 18 01 09	non-infectious sharps from vaccines delivered in mass vaccination centres, in the community and in care homes
18 01 02	non-infectious anatomical waste, not chemically preserved

18 01 02 and 18 01 06*	non-infectious anatomical waste, chemically preserved, hazardous chemicals
18 01 02 and 18 01 07	non-infectious anatomical waste, chemically preserved, non-hazardous chemicals
18 01 03*	infectious waste, not contaminated with chemicals or medicines (may contain sharps) infectious anatomical waste, not chemically preserved infectious gypsum wastes (for example, plaster casts and moulds)
18 01 03* and 18 01 06* or 18 01 07	infectious waste, contaminated with chemicals infectious anatomical waste, chemically preserved
18 01 03* and 18 01 08* or 20 01 31*	infectious waste, contaminated with cytotoxic and cytostatic medicines – (may contain sharps)
18 01 03* and 18 01 09	infectious waste, medicinally contaminated (not cytotoxic or cytostatic) – (may contain sharps) sharps from vaccinations delivered in hospitals or GP surgeries
18 01 04	non-infectious offensive waste – human healthcare non-infectious gypsum wastes (for example, plaster casts and moulds)
18 01 06*	chemicals consisting of or containing hazardous substances
18 01 07	chemicals other than those mentioned in 18 01 06
18 01 08*	cytotoxic and cytostatic medicines
18 01 09	other waste medicines, excluding cytotoxic and cytostatic medicines – human healthcare
18 01 10*	amalgam waste from dental care
<b>18 02</b>	<b>wastes from research, diagnosis, treatment or prevention of disease involving animals</b>
18 02 01	non-infectious sharps, not contaminated with chemicals or medicines
18 02 02*	infectious waste, not contaminated with chemicals or medicines (may contain sharps) infectious anatomical waste, not chemically preserved infectious gypsum wastes (for example, plaster casts and moulds)
18 02 02* and 18 02 05* or 18 02 06	infectious waste, contaminated with chemicals infectious anatomical waste, chemically preserved
18 02 02* and 18 02 07* or 20 01 31*	infectious waste, contaminated with cytotoxic and cytostatic medicines (may contain sharps)
18 02 02* and 18 02 08	infectious waste, medicinally contaminated (not cytotoxic or cytostatic) (may contain sharps)
18 02 03	non-infectious anatomical waste, not chemically preserved non-infectious offensive waste non-infectious gypsum wastes (for example, plaster casts and moulds)
18 02 03 and 18 02 05*	non-infectious anatomical waste, chemically preserved, hazardous chemicals

18 02 03 and 18 02 06	non-infectious anatomical waste, chemically preserved, non-hazardous chemicals
18 02 05*	chemicals consisting of or containing hazardous substances
18 02 06	chemicals other than those mentioned in 18 02 05
18 02 07*	cytotoxic and cytostatic medicines
18 02 08	other waste medicines, excluding cytotoxic and cytostatic
<b>19</b>	<b>Wastes from waste management facilities, off-site waste water treatment plants and the preparation of water intended for human consumption and water for industrial use</b>
<b>19 01</b>	<b>wastes from incineration or pyrolysis of waste</b>
19 01 05*	filter cake from gas treatment
19 01 06*	aqueous liquid wastes from gas treatment and other aqueous liquid wastes
19 01 07*	solid wastes from gas treatment
19 01 10*	spent activated carbon from flue-gas treatment
19 01 11*	bottom ash and slag containing hazardous substances
19 01 13*	fly ash containing hazardous substances
19 01 15*	boiler dust containing hazardous substances
19 01 17*	pyrolysis wastes containing hazardous substances
<b>19 02</b>	<b>wastes from physico/chemical treatments of waste (including dechromatation, decyanidation, neutralisation)</b>
19 02 03	premixed wastes composed only of non-hazardous wastes
19 02 04*	premixed wastes composed of at least one hazardous waste
19 02 05*	sludges from physico/chemical treatment containing hazardous substances
19 02 06	sludges from physico/chemical treatment other than those mentioned in 19 02 05
19 02 07*	oil and concentrates from separation
19 02 08*	liquid combustible wastes containing hazardous substances
19 02 09*	solid combustible wastes containing hazardous substances
19 02 10	combustible wastes other than those mentioned in 19 02 08 and 19 02 09
19 02 11*	other wastes containing hazardous substances
<b>19 03</b>	<b>stabilised/solidified wastes</b>
19 03 04*	wastes marked as hazardous, partly stabilised other than 19 03 08
19 03 05	stabilised wastes other than those mentioned in 19 03 04
19 03 06*	wastes marked as hazardous, solidified
19 03 07	solidified wastes other than those mentioned in 19 03 06
<b>19 04</b>	<b>vitrified waste and wastes from vitrification</b>
19 04 02*	fly ash and other flue-gas treatment wastes
19 04 03*	non-vitrified solid phase
<b>19 05</b>	<b>wastes from aerobic treatment of solid wastes</b>
19 05 01	non-composted fraction of municipal and similar wastes
19 05 02	non-composted fraction of animal and vegetable waste
19 05 03	off-specification compost

<b>19 06</b>	<b>wastes from anaerobic treatment of waste</b>
19 06 03	liquor from anaerobic treatment of municipal waste
19 06 04	digestate from anaerobic treatment of municipal waste
19 06 05	liquor from anaerobic treatment of animal and vegetable waste
19 06 06	digestate from anaerobic treatment of animal and vegetable waste
<b>19 07</b>	<b>landfill leachate</b>
19 07 02*	landfill leachate containing hazardous substances
19 07 03	landfill leachate other than those mentioned in 19 07 02
<b>19 08</b>	<b>wastes from waste water treatment plants not otherwise specified</b>
19 08 01	screenings
19 08 02	waste from desanding
19 08 05	sludges from treatment of urban waste water
19 08 06*	saturated or spent ion exchange resins
19 08 07*	solutions and sludges from regeneration of ion exchangers
19 08 08*	membrane system waste containing heavy metals
19 08 09	grease and oil mixture from oil/water separation containing only edible oil and fats
19 08 10*	grease and oil mixture from oil/water separation other than those mentioned in 19 08 09
19 08 11*	sludges containing hazardous substances from biological treatment of industrial waste water
19 08 12	sludges from biological treatment of industrial waste water other than those mentioned in 19 08 11
19 08 13*	sludges containing hazardous substances from other treatment of industrial waste water
19 08 14	sludges from other treatment of industrial waste water other than those mentioned in 19 08 13
<b>19 09</b>	<b>wastes from the preparation of water intended for human consumption or water for industrial use</b>
19 09 01	solid waste from primary filtration and screenings
19 09 02	sludges from water clarification
19 09 03	sludges from decarbonation
19 09 04	spent activated carbon
19 09 05	saturated or spent ion exchange resins
19 09 06	solutions and sludges from regeneration of ion exchangers
<b>19 10</b>	<b>wastes from shredding of metal-containing wastes</b>
19 10 01	iron and steel waste
19 10 02	non-ferrous waste
19 10 03*	fluff-light fraction and dust containing hazardous substances
19 10 04	fluff-light fraction and dust other than those mentioned in 19 10 03
19 10 05*	other fractions containing hazardous substances
19 10 06	other fractions other than those mentioned in 19 10 05
<b>19 11</b>	<b>wastes from oil regeneration</b>



19 11 01*	spent filter clays
19 11 02*	acid tars
19 11 03*	aqueous liquid wastes
19 11 04*	wastes from cleaning of fuel with bases
19 11 05*	sludges from on-site effluent treatment containing hazardous substances
19 11 06	sludges from on-site effluent treatment other than those mentioned in 19 11 05
19 11 07*	wastes from flue-gas cleaning
<b>19 12</b>	<b>wastes from the mechanical treatment of waste (for example sorting, crushing, compacting, pelletising) not otherwise specified</b>
19 12 01	paper and cardboard
19 12 02	ferrous metal
19 12 03	non-ferrous metal
19 12 04	plastic and rubber
19 12 05	Glass
19 12 06*	wood containing hazardous substances
19 12 07	wood other than that mentioned in 19 12 06
19 12 08	Textiles
19 12 09	minerals (for example sand, stones)
19 12 10	combustible waste (refuse derived fuel)
19 12 11*	other wastes (including mixtures of materials) from mechanical treatment of waste containing hazardous substances
19 12 12	other wastes (including mixtures of materials) from mechanical treatment of wastes other than those mentioned in 19 12 11
<b>19 13</b>	<b>wastes from soil and groundwater remediation</b>
19 13 01*	solid wastes from soil remediation containing hazardous substances
19 13 02	solid wastes from soil remediation other than those mentioned in 19 13 01
19 13 03*	sludges from soil remediation containing hazardous substances
19 13 04	sludges from soil remediation other than those mentioned in 19 13 03
19 13 05*	sludges from groundwater remediation containing hazardous substances
19 13 06	sludges from groundwater remediation other than those mentioned in 19 13 05
19 13 07*	aqueous liquid wastes and aqueous concentrates from groundwater remediation containing hazardous substances
19 13 08	aqueous liquid wastes and aqueous concentrates from groundwater remediation other than those mentioned in 19 13 07
<b>20</b>	<b>Municipal wastes (household waste and similar commercial, industrial and institutional wastes) including separately collected fractions</b>
<b>20 01</b>	<b>separately collected fractions (except 15 01)</b>
20 01 01	paper and cardboard
20 01 02	Glass
20 01 08	biodegradable kitchen and canteen waste
20 01 10	Clothes
20 01 11	Textiles

20 01 13*	solvents
20 01 14*	acids
20 01 15*	alkalines
20 01 17*	photochemicals
20 01 19*	pesticides
20 01 23*	discarded equipment containing chlorofluorocarbons
20 01 25	edible oil and fat
20 01 26*	oil and fat other than those mentioned in 20 01 25
20 01 27*	paint, inks, adhesives and resins containing hazardous substances
20 01 28	paint, inks, adhesives and resins other than those mentioned in 20 01 27
20 01 29*	detergents containing hazardous substances
20 01 30	detergents other than those mentioned in 20 01 29
20 01 31*	cytotoxic and cytostatic medicines
20 01 32	medicines other than those mentioned in 20 01 31
20 01 33*	batteries and accumulators included in 16 06 01, 16 06 02 or 16 06 03 and unsorted batteries and accumulators containing these batteries
20 01 34	batteries and accumulators other than those mentioned in 20 01 33
20 01 35*	discarded electrical and electronic equipment other than those mentioned in 20 01 21 and 20 01 23 containing hazardous components
20 01 36	discarded electrical and electronic equipment other than those mentioned in 20 01 21, 20 01 23 and 20 01 35
20 01 37*	wood containing hazardous substances
20 01 38	wood other than that mentioned in 20 01 37
20 01 39	Plastics
20 01 40	Metals
20 01 41	wastes from chimney sweeping
20 01 99	non-infectious offensive waste – municipal, separately collected fractions not from healthcare or research-related sources
<b>20 02</b>	<b>garden and park wastes (including cemetery waste)</b>
20 02 01	biodegradable waste other fractions not otherwise specified
20 02 02	soil and stones other fractions not otherwise specified
20 02 03	other non-biodegradable wastes
<b>20 03</b>	<b>other municipal wastes</b>
20 03 01	mixed municipal waste
20 03 02	waste from markets
20 03 03	street-cleaning residues
20 03 04	septic tank sludge
20 03 06	waste from sewage cleaning
20 03 07	bulky waste

<b>Table S2.3 Permitted waste types and quantities for storage and repackaging (activities AR2, AR3, AR7, AR8)</b>	
<b>Maximum quantity</b>	<b>8,000 tonnes per year comprising of no more than 4000 tonnes of hazardous and no more than 4,000 tonnes of non-hazardous wastes</b>
<b>Waste code</b>	<b>Description</b>
<b>01</b>	<b>Wastes resulting from exploration, mining, quarrying, and physical and chemical treatment of minerals</b>
<b>01 01</b>	<b>wastes from mineral excavation</b>
01 01 01	wastes from mineral metalliferous excavation
01 01 02	wastes from mineral non-metalliferous excavation
<b>01 03</b>	<b>wastes from physical and chemical processing of metalliferous minerals</b>
01 03 05*	other tailings containing hazardous substances
01 03 07*	other wastes containing hazardous substances from physical and chemical processing of metalliferous minerals
01 03 08	dusty and powdery wastes other than those mentioned in 01 03 07
01 03 09	red mud from alumina production other than the wastes mentioned in 01 03 10
01 03 10*	red mud from alumina production containing hazardous substances other than the wastes mentioned in 01 03 07
<b>01 04</b>	<b>wastes from physical and chemical processing of non-metalliferous minerals</b>
01 04 07*	wastes containing hazardous substances from physical and chemical processing of non-metalliferous minerals
01 04 08	waste gravel and crushed rocks other than those mentioned in 01 04 07
01 04 09	waste sand and clays
01 04 10	dusty and powdery wastes other than those mentioned in 01 04 07
01 04 11	wastes from potash and rock salt processing other than those mentioned in 01 04 07
01 04 12	tailings and other wastes from washing and cleaning of minerals other than those mentioned in 01 04 07 and 01 04 11
01 04 13	wastes from stone cutting and sawing other than those mentioned in 01 04 07
<b>01 05</b>	<b>drilling muds and other drilling wastes</b>
01 05 04	freshwater drilling muds and wastes
01 05 05*	oil-containing drilling muds and wastes
01 05 06*	drilling muds and other drilling wastes containing hazardous substances
01 05 07	barite-containing drilling muds and wastes other than those mentioned in 01 05 05 and 01 05 06
01 05 08	chloride-containing drilling muds and wastes other than those mentioned in 01 05 05 and 01 05 06
<b>02</b>	<b>Wastes from agriculture, horticulture, aquaculture, forestry, hunting and fishing, food preparation and processing</b>
<b>02 01</b>	<b>wastes from agriculture, horticulture, aquaculture, forestry, hunting and fishing</b>
02 01 01	sludges from washing and cleaning
02 01 02	animal-tissue
02 01 03	plant-tissue

02 01 04	waste plastics (except packaging)
02 01 06	animal faeces, urine and manure (including spoiled straw), effluent, collected separately and treated off-site
02 01 07	wastes from forestry
02 01 08*	agrochemical waste containing hazardous substances
02 01 09	agrochemical waste other than those mentioned in 02 01 08
02 01 10	waste metal
<b>02 02</b>	<b>wastes from the preparation and processing of meat, fish and other foods of animal origin</b>
02 02 01	sludges from washing and cleaning
02 02 02	animal-tissue
02 02 03	materials unsuitable for consumption or processing
02 02 04	sludges from on-site effluent treatment
<b>02 03</b>	<b>wastes from fruit, vegetables, cereals, edible oils, cocoa, coffee, tea and tobacco preparation and processing; conserve production; yeast and yeast extract production, molasses preparation and fermentation</b>
02 03 01	sludges from washing, cleaning, peeling, centrifuging and separation
02 03 02	wastes from preserving agents
02 03 03	wastes from solvent extraction
02 03 04	materials unsuitable for consumption or processing
02 03 05	sludges from on-site effluent treatment
<b>02 04</b>	<b>wastes from sugar processing</b>
02 04 01	soil from cleaning and washing beet
02 04 02	off-specification calcium carbonate
02 04 03	sludges from on-site effluent treatment
<b>02 05</b>	<b>wastes from the dairy products industry</b>
02 05 01	materials unsuitable for consumption or processing
02 05 02	sludges from on-site effluent treatment
<b>02 06</b>	<b>wastes from the baking and confectionery industry</b>
02 06 01	materials unsuitable for consumption or processing
02 06 02	wastes from preserving agents
02 06 03	sludges from on-site effluent treatment
<b>02 07</b>	<b>wastes from the production of alcoholic and non-alcoholic beverages (except coffee, tea and cocoa)</b>
02 07 01	wastes from washing, cleaning and mechanical reduction of raw materials
02 07 02	wastes from spirits distillation
02 07 03	wastes from chemical treatment
02 07 04	materials unsuitable for consumption or processing
02 07 05	sludges from on-site effluent treatment
<b>03</b>	<b>Wastes from wood processing and the production of panels and furniture, pulp, paper and cardboard</b>
<b>03 01</b>	<b>wastes from wood processing and the production of panels and furniture</b>

03 01 01	waste bark and cork
03 01 04*	sawdust, shavings, cuttings, wood, particle board and veneer containing dangerous substances
03 01 05	sawdust, shavings, cuttings, wood, particle board and veneer other than those mentioned in 03 01 04
<b>03 02</b>	<b>wastes from wood preservation</b>
03 02 01*	non-halogenated organic wood preservatives
03 02 02*	organochlorinated wood preservatives
03 02 03*	organometallic wood preservatives
03 02 04*	inorganic wood preservatives
03 02 05*	other wood preservatives containing hazardous substances
<b>03 03</b>	<b>wastes from pulp, paper and cardboard production and processing</b>
03 03 01	waste bark and wood
03 03 02	green liquor sludge (from recovery of cooking liquor)
03 03 05	de-inking sludges from paper recycling
03 03 07	mechanically separated rejects from pulping of waste paper and cardboard
03 03 08	wastes from sorting of paper and cardboard destined for recycling
03 03 09	lime mud waste
03 03 10	fibre rejects, fibre-, filler- and coating-sludges from mechanical separation
03 03 11	sludges from on-site effluent treatment other than those mentioned in 03 03 10
<b>04</b>	<b>Wastes from the leather, fur and textile industries</b>
<b>04 01</b>	<b>wastes from the leather and fur industry</b>
04 01 01	fleshings and lime split wastes
04 01 02	liming waste
04 01 03*	degreasing wastes containing solvents without a liquid phase
04 01 04	tanning liquor containing chromium
04 01 05	tanning liquor free of chromium
04 01 06	sludges, in particular from on-site effluent treatment containing chromium that
04 01 07	sludges, in particular from on-site effluent treatment free of chromium
04 01 08	waste tanned leather (blue sheeting's, shavings, cuttings, buffing dust) containing chromium
04 01 09	wastes from dressing and finishing
<b>04 02</b>	<b>wastes from the textile industry</b>
04 02 09	wastes from composite materials (impregnated textile, elastomer, plastomer)
04 02 10	organic matter from natural products (for example grease, wax)
04 02 14*	wastes from finishing containing organic solvents
04 02 15	wastes from finishing other than those mentioned in 04 02 14
04 02 16*	dyestuffs and pigments containing hazardous substances
04 02 17	dyestuffs and pigments other than those mentioned in 04 02 16
04 02 19*	sludges from on-site effluent treatment containing hazardous substances

04 02 20	sludges from on-site effluent treatment other than those mentioned in 04 02 19
04 02 21	wastes from unprocessed textile fibres
04 02 22	wastes from processed textile fibres
<b>05</b>	<b>Wastes from petroleum refining, natural gas purification and pyrolytic treatment of coal</b>
<b>05 01</b>	<b>wastes from petroleum refining</b>
05 01 02*	desalter sludges
05 01 03*	tank bottom sludges
05 01 04*	acid alkyl sludges
05 01 05*	oil spills
05 01 06*	oily sludges from maintenance operations of the plant or equipment
05 01 07*	acid tars
05 01 08*	other tars
05 01 09*	sludges from on-site effluent treatment containing hazardous substances
05 01 10	sludges from on-site effluent treatment other than those mentioned in 05 01 09
05 01 11*	wastes from cleaning of fuels with bases
05 01 12*	oil containing acids
05 01 13	boiler feedwater sludges
05 01 14	wastes from cooling columns
05 01 15*	spent filter clays
05 01 17	bitumen
<b>05 06</b>	<b>wastes from the pyrolytic treatment of coal</b>
05 06 01*	acid tars
05 06 03*	other tars
05 06 04	waste from cooling columns
<b>06</b>	<b>Wastes from inorganic chemical processes</b>
<b>06 01</b>	<b>wastes from the manufacture, formulation, supply and use (MFSU) of acids</b>
06 01 01*	sulphuric acid and sulphurous acid
06 01 02*	hydrochloric acid
06 01 03*	hydrofluoric acid
06 01 04*	phosphoric and phosphorous acid
06 01 05*	nitric acid and nitrous acid
06 01 06*	other acids
<b>06 02</b>	<b>wastes from the MFSU of bases</b>
06 02 01*	calcium hydroxide
06 02 03*	ammonium hydroxide
06 02 04*	sodium and potassium hydroxide
06 02 05*	other bases
<b>06 03</b>	<b>wastes from the MFSU of salts and their solutions and metallic oxides</b>
06 03 11*	solid salts and solutions containing cyanides

06 03 13*	solid salts and solutions containing heavy metals
06 03 14	solid salts and solutions other than those mentioned in 06 03 11 and 06 03 13
06 03 15*	metallic oxides containing heavy metals
06 03 16	metallic oxides other than those mentioned in 06 03 15
<b>06 04</b>	<b>metal-containing wastes other than those mentioned in 06 03</b>
06 04 03*	wastes containing arsenic
06 04 05*	wastes containing other heavy metals
<b>06 05</b>	<b>sludges from on-site effluent treatment</b>
06 05 02*	sludges from on-site effluent treatment containing hazardous substances
06 05 03	sludges from on-site effluent treatment other than those mentioned in 06 05 02
<b>06 08</b>	<b>wastes from the MFSU of silicon and silicon derivatives</b>
06 08 02*	waste containing hazardous chlorosilanes
<b>06 09</b>	<b>wastes from the MFSU of phosphorous chemicals and phosphorous chemical processes</b>
06 09 03*	calcium-based reaction wastes containing or contaminated with hazardous substances
06 09 04	calcium-based reaction wastes other than those mentioned in 06 09 03
<b>06 10</b>	<b>wastes from the MFSU of nitrogen chemicals, nitrogen chemical processes and fertiliser manufacture</b>
06 10 02*	wastes containing hazardous substances
<b>06 11</b>	<b>wastes from the manufacture of inorganic pigments and opacifiers</b>
06 11 01	calcium-based reaction wastes from titanium dioxide production
<b>06 13</b>	<b>wastes from inorganic chemical processes not otherwise specified</b>
06 13 01*	inorganic plant protection products, wood-preserving agents and other biocides
06 13 02*	spent activated carbon (except 06 07 02)
06 13 03	carbon black
06 13 04*	wastes from asbestos processing
06 13 05*	soot
<b>07</b>	<b>Wastes from organic chemical processes</b>
<b>07 01</b>	<b>wastes from the manufacture, formulation, supply and use (MFSU) of basic organic chemicals</b>
07 01 01*	aqueous washing liquids and mother liquors
07 01 03*	organic halogenated solvents, washing liquids and mother liquors
07 01 04*	other organic solvents, washing liquids and mother liquors
07 01 07*	halogenated still bottoms and reaction residues
07 01 08*	other still bottoms and reaction residues
07 01 09*	halogenated filter cakes and spent absorbents
07 01 10*	other filter cakes and spent absorbents
07 01 11*	sludges from on-site effluent treatment containing hazardous substances
07 01 12	sludges from on-site effluent treatment other than those mentioned in 07 01 11
<b>07 02</b>	<b>wastes from the MFSU of plastics, synthetic rubber and man-made fibres</b>
07 02 01*	aqueous washing liquids and mother liquors

07 02 03*	organic halogenated solvents, washing liquids and mother liquors
07 02 04*	other organic solvents, washing liquids and mother liquors
07 02 07*	halogenated still bottoms and reaction residues
07 02 08*	other still bottoms and reaction residues
07 02 09*	halogenated filter cakes and spent absorbents
07 02 10*	other filter cakes and spent absorbents
07 02 11*	sludges from on-site effluent treatment containing hazardous substances
07 02 12	sludges from on-site effluent treatment other than those mentioned in 07 02 11
07 02 13	waste plastic
07 02 14*	wastes from additives containing hazardous substances
07 02 15	wastes from additives other than those mentioned in 07 02 14
07 02 16*	wastes containing silicones that are not suitable for processing in an alternative waste management facility due to contamination
07 02 17	Waste containing silicones other than those mentioned in 07 02 16
<b>07 03</b>	<b>wastes from the MFSU of organic dyes and pigments (except 06 11)</b>
07 03 01*	aqueous washing liquids and mother liquors
07 03 03*	organic halogenated solvents, washing liquids and mother liquors
07 03 04*	other organic solvents, washing liquids and mother liquors
07 03 07*	halogenated still bottoms and reaction residues
07 03 08*	other still bottoms and reaction residues
07 03 09*	halogenated filter cakes and spent absorbents
07 03 10*	other filter cakes and spent absorbents
07 03 11*	sludges from on-site effluent treatment containing hazardous substances
07 03 12	sludges from on-site effluent treatment other than those mentioned in 07 03 11
<b>07 04</b>	<b>wastes from the MFSU of organic plant protection products (except 02 01 08 and 02 01 09), wood preserving agents (except 03 02) and other biocides</b>
07 04 01*	aqueous washing liquids and mother liquors
07 04 03*	organic halogenated solvents, washing liquids and mother liquors
07 04 04*	other organic solvents, washing liquids and mother liquors
07 04 07*	halogenated still bottoms and reaction residues
07 04 08*	other still bottoms and reaction residues
07 04 09*	halogenated filter cakes and spent absorbents
07 04 10*	other filter cakes and spent absorbents
07 04 11*	sludges from on-site effluent treatment containing hazardous substances
07 04 12	sludges from on-site effluent treatment other than those mentioned in 07 04 11
07 04 13*	solid wastes containing hazardous substances
<b>07 05</b>	<b>wastes from the MFSU of pharmaceuticals</b>
07 05 01*	aqueous washing liquids and mother liquors
07 05 03*	organic halogenated solvents, washing liquids and mother liquors
07 05 04*	other organic solvents, washing liquids and mother liquors
07 05 07*	halogenated still bottoms and reaction residues



07 05 08*	other still bottoms and reaction residues
07 05 09*	halogenated filter cakes and spent absorbents
07 05 10*	other filter cakes and spent absorbents
07 05 11*	sludges from on-site effluent treatment containing hazardous substances
07 05 12	sludges from on-site effluent treatment other than those mentioned in 07 05 11
07 05 13*	solid wastes containing hazardous substances
07 05 14	solid wastes other than those mentioned in 07 05 13
<b>07 06</b>	<b>wastes from the MFSU of fats, grease, soaps, detergents, disinfectants and cosmetics</b>
07 06 01*	aqueous washing liquids and mother liquors
07 06 03*	organic halogenated solvents, washing liquids and mother liquors
07 06 04*	other organic solvents, washing liquids and mother liquors
07 06 07*	halogenated still bottoms and reaction residues
07 06 08*	other still bottoms and reaction residues
07 06 09*	halogenated filter cakes and spent absorbents
07 06 10*	other filter cakes and spent absorbents
07 06 11*	sludges from on-site effluent treatment containing hazardous substances
07 06 12	sludges from on-site effluent treatment other than those mentioned in 07 06 11
<b>07 07</b>	<b>wastes from the MFSU of fine chemicals and chemical products not otherwise specified</b>
07 07 01*	aqueous washing liquids and mother liquors
07 07 03*	organic halogenated solvents, washing liquids and mother liquors
07 07 04*	other organic solvents, washing liquids and mother liquors
07 07 07*	halogenated still bottoms and reaction residues
07 07 08*	other still bottoms and reaction residues
07 07 09*	halogenated filter cakes and spent absorbents
07 07 10*	other filter cakes and spent absorbents
07 07 11*	sludges from on-site effluent treatment containing hazardous substances
07 07 12	sludges from on-site effluent treatment other than those mentioned in 07 07 11
<b>08</b>	<b>Wastes from the manufacture, formulation, supply and use (MFSU) of coatings (paints, varnishes and vitreous enamels), adhesives, sealants and printing inks</b>
<b>08 01</b>	<b>wastes from MFSU and removal of paint and varnish</b>
08 01 11*	waste paint and varnish containing organic solvents or other hazardous substances
08 01 12	waste paint and varnish other than those mentioned in 08 01 11
08 01 13*	sludges from paint or varnish containing organic solvents or other hazardous substances
08 01 14	sludges from paint or varnish other than those mentioned in 08 01 13
08 01 15*	aqueous sludges containing paint or varnish containing organic solvents or other hazardous substances
08 01 16	aqueous sludges containing paint or varnish other than those mentioned in 08 01 15
08 01 17*	wastes from paint or varnish removal containing organic solvents or other hazardous substances

08 01 18	wastes from paint or varnish removal other than those mentioned in 08 01 17
08 01 19*	aqueous suspensions containing paint or varnish containing organic solvents or other hazardous substances
08 01 20	aqueous suspensions containing paint or varnish other than those mentioned in 08 01 19
08 01 21*	waste paint or varnish remover
<b>08 02</b>	<b>wastes from MFSU of other coatings (including ceramic materials)</b>
08 02 01	waste coating powders
08 02 02	aqueous sludges containing ceramic materials
08 02 03	aqueous suspensions containing ceramic materials
<b>08 03</b>	<b>wastes from MFSU of printing inks</b>
08 03 07	aqueous sludges containing ink
08 03 08	aqueous liquid waste containing ink
08 03 12*	waste ink containing hazardous substances
08 03 13	waste ink other than those mentioned in 08 03 12
08 03 14*	ink sludges containing hazardous substances
08 03 15	ink sludges other than those mentioned in 08 03 14
08 03 16*	waste etching solutions
08 03 17*	waste printing toner containing hazardous substances
08 03 18	waste printing toner other than those mentioned in 08 03 17
08 03 19*	disperse oil
<b>08 04</b>	<b>wastes from MFSU of adhesives and sealants (including water proofing products)</b>
08 04 09*	waste adhesives and sealants containing organic solvents or other hazardous substances
08 04 10	waste adhesives and sealants other than those mentioned in 08 04 09
08 04 11*	adhesive and sealant sludges containing organic solvents or other hazardous substances
08 04 12	adhesive and sealant sludges other than those mentioned in 08 04 11
08 04 13*	aqueous sludges containing adhesives or sealants containing organic solvents or other hazardous substances
08 04 14	aqueous sludges containing adhesives or sealants other than those mentioned in 08 04 13
08 04 15*	aqueous liquid waste containing adhesives or sealants containing organic solvents or other hazardous substances
08 04 16	aqueous liquid waste containing adhesives or sealants other than those mentioned in 08 04 15
08 04 17*	rosin oil
<b>08 05</b>	<b>wastes not otherwise specified in 08</b>
08 05 01*	waste isocyanates
<b>09</b>	<b>Wastes from the photographic industry</b>
<b>09 01</b>	<b>wastes from the photographic industry</b>
09 01 01*	water-based developer and activator solutions

09 01 02*	water-based offset plate developer solutions
09 01 03*	solvent-based developer solutions
09 01 04*	fixer solutions
09 01 05*	bleach solutions and bleach fixer solutions
09 01 06*	wastes containing silver from on-site treatment of photographic wastes
09 01 07	photographic film and paper containing silver or silver compounds
09 01 08	photographic film and paper free of silver or silver compounds
09 01 10	single-use cameras without batteries
09 01 11*	single-use cameras containing batteries included in 16 06 01, 16 06 02 or 16 06 03
09 01 12	single-use cameras containing batteries other than those mentioned in 09 01 11
09 01 13*	aqueous liquid waste from on-site reclamation of silver other than those mentioned in 09 01 06
<b>10</b>	<b>Wastes from thermal processes</b>
<b>10 01</b>	<b>wastes from power stations and other combustion plants (except 19)</b>
10 01 01	bottom ash, slag and boiler dust (excluding boiler dust mentioned in 10 01 04)
10 01 04*	oil fly ash and boiler dust
10 01 14*	bottom ash, slag and boiler dust from co-incineration containing hazardous substances
10 01 16*	fly ash from co-incineration containing hazardous substances
10 01 18*	wastes from gas cleaning containing hazardous substances
10 01 20*	sludges from on-site effluent treatment containing hazardous substances
10 01 21	sludges from on-site effluent treatment other than those mentioned in 10 01 20
10 01 22*	aqueous sludges from boiler cleansing containing hazardous substances
10 01 23	aqueous sludges from boiler cleansing other than those mentioned in 10 01 22
<b>10 02</b>	<b>wastes from the iron and steel industry</b>
10 02 01	wastes from the processing of slag
10 02 02	unprocessed slag
10 02 07*	solid wastes from gas treatment containing hazardous substances
10 02 10	mill scales
10 02 11*	wastes from cooling-water treatment containing oil
10 02 12	wastes from cooling-water treatment other than those mentioned in 10 02 11
10 02 13*	sludges and filter cakes from gas treatment containing hazardous substances
10 02 14	sludges and filter cakes from gas treatment other than those mentioned in 10 02 13
10 02 15	other sludges and filter cakes
<b>10 03</b>	<b>wastes from aluminium thermal metallurgy</b>
10 03 04*	primary production slags
10 03 15*	skimings that are flammable or emit, upon contact with water, flammable gases in hazardous quantities
10 03 17*	tar-containing wastes from anode manufacture
10 03 19*	flue-gas dust containing hazardous substances
10 03 21*	other particulates and dust (including ball-mill dust) containing hazardous substances

10 03 22	other particulates and dust (including ball-mill dust) other than those mentioned in 10 03 21
10 03 23*	solid wastes from gas treatment containing hazardous substances
10 03 25*	sludges and filter cakes from gas treatment containing hazardous substances
10 03 27*	wastes from cooling-water treatment containing oil
10 03 29*	wastes from treatment of salt slags and black drosses containing hazardous substances
<b>10 08</b>	<b>wastes from other non-ferrous thermal metallurgy</b>
10 08 12*	tar-containing wastes from anode manufacture
10 08 15*	flue-gas dust containing hazardous substances
10 08 17*	sludges and filter cakes from flue-gas treatment containing hazardous substances
10 08 18	sludges and filter cakes from flue-gas treatment other than those mentioned in 10 08 17
10 08 19*	wastes from cooling-water treatment containing oil
10 08 20	wastes from cooling-water treatment other than those mentioned in 10 08 19
<b>10 09</b>	<b>wastes from casting of ferrous pieces</b>
10 09 05*	casting cores and moulds which have not undergone pouring containing hazardous substances
10 09 07*	casting cores and moulds which have undergone pouring containing hazardous substances
10 09 11*	other particulates containing hazardous substances
10 09 13*	waste binders containing hazardous substances
10 09 14	waste binders other than those mentioned in 10 09 13
10 09 15*	waste crack-indicating agent containing hazardous substances
10 09 16	waste crack-indicating agent other than those mentioned in 10 09 15
<b>10 10</b>	<b>wastes from casting of non-ferrous pieces</b>
10 10 05*	casting cores and moulds which have not undergone pouring, containing hazardous substances
10 10 07*	casting cores and moulds which have undergone pouring, containing hazardous substances
10 10 09*	flue-gas dust containing hazardous substances
10 10 11*	other particulates containing hazardous substances
10 10 13*	waste binders containing hazardous substances
10 10 14	waste binders other than those mentioned in 10 10 13
10 10 15*	waste crack-indicating agent containing hazardous substances
10 10 16	waste crack-indicating agent other than those mentioned in 10 10 15
<b>10 11</b>	<b>wastes from manufacture of glass and glass products</b>
10 11 09*	waste preparation mixture before thermal processing, containing hazardous substances
10 11 13*	glass-polishing and -grinding sludge containing hazardous substances
10 11 15*	solid wastes from flue-gas treatment containing hazardous substances
10 11 17*	sludges and filter cakes from flue-gas treatment containing hazardous substances
10 11 19*	solid wastes from on-site effluent treatment containing hazardous substances

<b>11</b>	<b>Wastes from chemical surface treatment and coating of metals and other materials; non-ferrous hydro-metallurgy</b>
<b>11 01</b>	<b>wastes from chemical surface treatment and coating of metals and other materials (for example galvanic processes, zinc coating processes, pickling processes, etching, phosphating, alkaline degreasing, anodising)</b>
11 01 05*	pickling acids
11 01 06*	acids not otherwise specified
11 01 07*	pickling bases
11 01 08*	phosphatising sludges
11 01 09*	sludges and filter cakes containing hazardous substances
11 01 10	sludges and filter cakes other than those mentioned in 11 01 09
11 01 11*	aqueous rinsing liquids containing dangerous substances
11 01 12	aqueous rinsing liquids other than those mentioned in 11 01 11
11 01 13*	degreasing wastes containing hazardous substances
11 01 14	degreasing wastes other than those mentioned in 11 01 13
11 01 15*	eluate and sludges from membrane systems or ion exchange systems containing hazardous substances
11 01 16*	saturated or spent ion exchange resins
11 01 98*	other wastes containing dangerous substances
<b>11 02</b>	<b>wastes from non-ferrous hydrometallurgical processes</b>
11 02 02*	sludges from zinc hydrometallurgy (including jarosite, goethite)
11 02 03	wastes from the production of anodes for aqueous electrolytical processes
11 02 05*	wastes from copper hydrometallurgical processes containing hazardous substances
11 02 06	wastes from copper hydrometallurgical processes other than those mentioned in 11 02 05
11 02 07*	other wastes containing hazardous substances
<b>11 03</b>	<b>sludges and solids from tempering processes</b>
11 03 01*	wastes containing cyanide
11 03 02*	other wastes salts and sludges that don't contain cyanide, such as nitrates and nitrites.
<b>12</b>	<b>Wastes from shaping and physical and mechanical surface treatment of metals and plastics</b>
<b>12 01</b>	<b>wastes from shaping and physical and mechanical surface treatment of metals and plastics</b>
12 01 01	ferrous metal filings and turnings
12 01 02	ferrous metal dust and particles
12 01 03	non-ferrous metal filings and turnings
12 01 04	non-ferrous metal dust and particles
12 01 05	plastics shavings and turnings
12 01 06*	mineral-based machining oils containing halogens (except emulsions and solutions)
12 01 07*	mineral-based machining oils free of halogens (except emulsions and solutions)
12 01 08*	machining emulsions and solutions containing halogens
12 01 09*	machining emulsions and solutions free of halogens

12 01 10*	synthetic machining oils
12 01 12*	spent waxes and fats
12 01 13	welding wastes
12 01 14*	machining sludges containing hazardous substances
12 01 15	machining sludges other than those mentioned in 12 01 14
12 01 16*	waste blasting material containing hazardous substances
12 01 17	waste blasting material other than those mentioned in 12 01 16
12 01 18*	metal sludge (grinding, honing and lapping sludge) containing oil
12 01 19*	readily biodegradable machining oil
12 01 20*	spent grinding bodies and grinding materials containing hazardous substances
12 01 21	spent grinding bodies and grinding materials other than those mentioned in 12 01 20
<b>12 03</b>	<b>wastes from water and steam degreasing processes (except 11)</b>
12 03 01*	aqueous washing liquids
12 03 02*	steam degreasing wastes
<b>13</b>	<b>Oil wastes and wastes of liquid fuels (except edible oils, and those in chapters 05, 12 and 19)</b>
<b>13 01</b>	<b>waste hydraulic oils</b>
13 01 01*	hydraulic oils, containing PCBs
13 01 04*	chlorinated emulsions
13 01 05*	non-chlorinated emulsions
13 01 09*	mineral-based chlorinated hydraulic oils
13 01 10*	mineral based non-chlorinated hydraulic oils
13 01 11*	synthetic hydraulic oils
13 01 12*	readily biodegradable hydraulic oils
13 01 13*	other hydraulic oils
<b>13 02</b>	<b>waste engine, gear and lubricating oils</b>
13 02 04*	mineral-based chlorinated engine, gear and lubricating oils
13 02 05*	mineral-based non-chlorinated engine, gear and lubricating oils
13 02 06*	synthetic engine, gear and lubricating oils
13 02 07*	readily biodegradable engine, gear and lubricating oils
13 02 08*	other engine, gear and lubricating oils
<b>13 03</b>	<b>waste insulating and heat transmission oils</b>
13 03 01*	insulating or heat transmission oils containing PCBs
13 03 06*	mineral-based chlorinated insulating and heat transmission oils other than those mentioned in 13 03 01
13 03 07*	mineral-based non-chlorinated insulating and heat transmission oils
13 03 08*	synthetic insulating and heat transmission oils
13 03 09*	readily biodegradable insulating and heat transmission oils
13 03 10*	other insulating and heat transmission oils
<b>13 04</b>	<b>bilge oils</b>
13 04 01*	bilge oils from inland navigation

13 04 02*	bilge oils from jetty sewers
13 04 03*	bilge oils from other navigation
13 05 06*	oil from oil/water separators
13 05 07*	oily water from oil/water separators
13 05 08*	mixtures of wastes from grit chambers and oil/water separators
<b>13 07</b>	<b>wastes of liquid fuels</b>
13 07 01*	fuel oil and diesel
13 07 02*	petrol
13 07 03*	other fuels (including mixtures)
<b>13 08</b>	<b>oil wastes not otherwise specified</b>
13 08 01*	desalter sludges or emulsions
13 08 02*	other emulsions
<b>14</b>	<b>Waste organic solvents, refrigerants and propellants (except 07 and 08)</b>
<b>14 06</b>	<b>waste organic solvents, refrigerants and foam/aerosol propellants</b>
14 06 01*	chlorofluorocarbons, HCFC, HFC
14 06 02*	other halogenated solvents and solvent mixtures
14 06 03*	other solvents and solvent mixtures
14 06 04*	sludges or solid wastes containing halogenated solvents
14 06 05*	sludges or solid wastes containing other solvents
<b>15</b>	<b>Waste packaging, absorbents, wiping cloths, filter materials and protective clothing not otherwise specified</b>
<b>15 01</b>	<b>packaging (including separately collected municipal packaging waste)</b>
15 01 01	paper and cardboard packaging
15 01 02	plastic packaging
15 01 03	wooden packaging
15 01 04	metallic packaging
15 01 05	composite packaging
15 01 06	mixed packaging
15 01 07	glass packaging
15 01 09	textile packaging
15 01 10*	packaging containing residues of or contaminated by hazardous substances
15 01 11*	metallic packaging containing a hazardous solid porous matrix (for example asbestos), including empty pressure containers
<b>15 02</b>	<b>absorbents, filter materials, wiping cloths and protective clothing</b>
15 02 02*	absorbents, filter materials (including oil filters not otherwise specified), wiping cloths, protective clothing contaminated by hazardous substances
15 02 03	absorbents, filter materials, wiping cloths and protective clothing other than those mentioned in 15 02 02
<b>16</b>	<b>Wastes not otherwise specified in the list</b>
<b>16 01</b>	<b>end-of-life vehicles from different means of transport (including off-road machinery) and wastes from dismantling of end-of-life vehicles and vehicle maintenance (except 13, 14, 16 06 and 16 08)</b>

16 01 03	end-of-life tyres
16 01 07*	oil filters
16 01 09*	components containing PCBs
16 01 10*	explosive components (for example air bags)
16 01 11*	brake pads containing asbestos
16 01 12	brake pads other than those mentioned in 16 01 11
16 01 13*	brake fluids
16 01 14*	antifreeze fluids containing hazardous substances
16 01 15	antifreeze fluids other than those mentioned in 16 01 14
16 01 17	ferrous metal
16 01 18	non-ferrous metal
16 01 19	plastic
16 01 20	glass
16 01 21*	hazardous components other than those mentioned in 16 01 07 to 16 01 11 and 16 01 13 and 16 01 14
16 01 22	components not otherwise specified
<b>16 02</b>	<b>wastes from electrical and electronic equipment</b>
16 02 09*	transformers and capacitors containing PCBs
16 02 10*	discarded equipment containing or contaminated by PCBs other than those mentioned in 16 02 09
16 02 11*	discarded equipment containing chlorofluorocarbons, HCFC, HFC
16 02 12*	discarded equipment containing free asbestos
16 02 13*	discarded equipment containing hazardous components other than those mentioned in 16 02 09 to 16 02 12
16 02 14	discarded equipment other than those mentioned in 16 02 09 to 16 02 13
16 02 15*	hazardous components removed from discarded equipment
16 02 16	components removed from discarded equipment other than those mentioned in 16 02 15
<b>16 03</b>	<b>off-specification batches and unused products</b>
16 03 03*	inorganic wastes containing hazardous substances
16 03 04	inorganic wastes other than those mentioned in 16 03 03
16 03 05*	organic wastes containing hazardous substances
16 03 06	organic wastes other than those mentioned in 16 03 05
<b>16 04</b>	<b>waste explosives</b>
16 04 01*	waste ammunition
16 04 02*	fireworks wastes
16 04 03*	other waste explosives
<b>16 05</b>	<b>gases in pressure containers and discarded chemicals</b>
16 05 04*	gases in pressure containers (including halons) containing hazardous substances
16 05 05	gases in pressure containers other than those mentioned in 16 05 04 that require high temperature incineration



16 05 06*	laboratory chemicals, consisting of or containing hazardous substances, including mixtures of laboratory chemicals
16 05 07*	discarded inorganic chemicals consisting of or containing hazardous substances
16 05 08*	discarded organic chemicals consisting of or containing hazardous substances
16 05 09	discarded chemicals other than those mentioned in 16 05 06, 16 05 07 or 16 05 08
<b>16 06</b>	<b>batteries and accumulators</b>
16 06 01*	lead batteries
16 06 02*	Ni-Cd batteries
16 06 04	alkaline batteries (except 16 06 03)
16 06 05	other batteries and accumulators
16 06 06*	separately collected electrolyte from batteries and accumulators
<b>16 07</b>	<b>wastes from transport tank, storage tank and barrel cleaning (except 05 and 13)</b>
16 07 08*	wastes containing oil
16 07 09*	wastes containing other hazardous substances
<b>16 08</b>	<b>spent catalysts</b>
16 08 01	spent catalysts containing gold, silver, rhenium, rhodium, palladium, iridium or platinum (except 16 08 07)
16 08 02*	spent catalysts containing hazardous transition metals or hazardous transition metal compounds
16 08 03	spent catalysts containing transition metals or transition metal compounds not otherwise specified
16 08 04	spent fluid catalytic cracking catalysts (except 16 08 07)
16 08 05*	spent catalysts containing phosphoric acid
16 08 06*	spent liquids used as catalysts
16 08 07*	spent catalysts contaminated with hazardous substances
<b>16 09</b>	<b>oxidising substances</b>
16 09 01*	permanganates, for example potassium permanganate
16 09 02*	chromates, for example potassium chromate, potassium or sodium dichromate
16 09 03*	peroxides, for example hydrogen peroxide
16 09 04*	oxidising substances, not otherwise specified
<b>16 10</b>	<b>aqueous liquid wastes destined for off-site treatment</b>
16 10 01*	aqueous liquid wastes containing hazardous substances
16 10 02	aqueous liquid wastes other than those mentioned in 16 10 01
16 10 03*	aqueous concentrates containing hazardous substances
16 10 04	aqueous concentrates other than those mentioned in 16 10 03
<b>16 11</b>	<b>waste linings and refractories</b>
16 11 01*	carbon-based linings and refractories from metallurgical processes containing hazardous substances
16 11 02	carbon-based linings and refractories from metallurgical processes others than those mentioned in 16 11 01
16 11 03*	other linings and refractories from metallurgical processes containing hazardous substances

16 11 04	other linings and refractories from metallurgical processes other than those mentioned in 16 11 03
16 11 05*	linings and refractories from non-metallurgical processes containing hazardous substances
16 11 06	linings and refractories from non-metallurgical processes others than those mentioned in 16 11 05
<b>17</b>	<b>Construction and demolition wastes (including excavated soil from contaminated sites)</b>
<b>17 01</b>	<b>concrete, bricks, tiles and ceramics</b>
17 01 01	Concrete
17 01 02	Bricks
17 01 03	tiles and ceramics
17 01 06*	mixtures of, or separate fractions of concrete, bricks, tiles and ceramics containing hazardous substances
17 01 07	mixtures of concrete, bricks, tiles and ceramics other than those mentioned in 17 01 06
<b>17 02</b>	<b>wood, glass and plastic</b>
17 02 01	Wood
17 02 02	Glass
17 02 03	Plastic
17 02 04*	glass, plastic and wood containing or contaminated with hazardous substances
<b>17 03</b>	<b>bituminous mixtures, coal tar and tarred products</b>
17 03 01*	bituminous mixtures containing coal tar
17 03 02	bituminous mixtures other than those mentioned in 17 03 01
17 03 03*	coal tar and tarred products
<b>17 04</b>	<b>metals (including their alloys)</b>
17 04 01	copper, bronze, brass
17 04 02	Aluminium
17 04 03	Lead
17 04 04	Zinc
17 04 05	iron and steel
17 04 06	Tin
17 04 07	mixed metals
17 04 09*	metal waste contaminated with hazardous substances
17 04 10*	cables containing oil, coal tar and other hazardous substances
17 04 11	cables other than those mentioned in 17 04 10
<b>17 05</b>	<b>soil (including excavated soil from contaminated sites), stones and dredging spoil</b>
17 05 03*	soil and stones containing hazardous substances
17 05 04	soil and stones other than those mentioned in 17 05 03
17 05 05*	dredging spoil containing hazardous substances
17 05 06	dredging spoil other than those mentioned in 17 05 05

17 05 07*	track ballast containing hazardous substances
17 05 08	track ballast other than those mentioned in 17 05 07
<b>17 06</b>	<b>insulation materials and asbestos-containing construction materials</b>
17 06 01*	insulation materials containing asbestos
17 06 03*	other insulation materials consisting of or containing hazardous substances
17 06 04	insulation materials other than those mentioned in 17 06 01 and 17 06 03
17 06 05*	construction materials containing asbestos
<b>17 08</b>	<b>gypsum-based construction material</b>
17 08 01*	gypsum-based construction materials contaminated with hazardous substances
17 08 02	gypsum-based construction materials other than those mentioned in 17 08 01
<b>17 09</b>	<b>other construction and demolition wastes</b>
17 09 02*	construction and demolition wastes containing PCB (for example PCB- containing sealants, PCB-containing resin-based floorings, PCB-containing sealed glazing units, PCB-containing capacitors)
17 09 03*	other construction and demolition wastes (including mixed wastes) containing hazardous substances
17 09 04	mixed construction and demolition wastes other than those mentioned in 17 09 01, 17 09 02 and 17 09 03
<b>18</b>	<b>Wastes from human or animal health care and/or related research (except kitchen and restaurant wastes not arising from immediate health care)</b>
<b>18 01</b>	<b>wastes from natal care, diagnosis, treatment or prevention of disease in humans</b>
18 01 01	non-infectious sharps, not contaminated with chemicals or medicines
18 01 01 and 18 01 09	non-infectious sharps from vaccines delivered in mass vaccination centres, in the community and in care homes
18 01 02	non-infectious anatomical waste, not chemically preserved
18 01 02 and 18 01 06*	non-infectious anatomical waste, chemically preserved, hazardous chemicals
18 01 02 and 18 01 06*	non-infectious anatomical waste, chemically preserved, hazardous chemicals
18 01 02 and 18 01 07	non-infectious anatomical waste, chemically preserved, non-hazardous chemicals
18 01 03*	infectious waste, not contaminated with chemicals or medicines (may contain sharps) infectious anatomical waste, not chemically preserved infectious gypsum wastes (for example, plaster casts and moulds)
18 01 03* and 18 01 06* or 18 01 07	infectious waste, contaminated with chemicals infectious anatomical waste, chemically preserved
18 01 03* and 18 01 08* or 20 01 31*	infectious waste, contaminated with cytotoxic and cytostatic medicines – (may contain sharps)
18 01 03* and 18 01 09	infectious waste, medicinally contaminated (not cytotoxic or cytostatic) – (may contain sharps) sharps from vaccinations delivered in hospitals or GP surgeries

18 01 04	non-infectious offensive waste – human healthcare non-infectious gypsum wastes (for example, plaster casts and moulds)
18 01 06*	chemicals consisting of or containing hazardous substances
18 01 07	chemicals other than those mentioned in 18 01 06
18 01 08*	cytotoxic and cytostatic medicines
18 01 09	other waste medicines, excluding cytotoxic and cytostatic medicines – human healthcare
18 01 10*	amalgam waste from dental care
<b>18 02</b>	<b>wastes from research, diagnosis, treatment or prevention of disease involving animals</b>
18 02 01	non-infectious sharps, not contaminated with chemicals or medicines
18 02 02*	infectious waste, not contaminated with chemicals or medicines (may contain sharps) infectious anatomical waste, not chemically preserved infectious gypsum wastes (for example, plaster casts and moulds)
18 02 02* and 18 02 05* or 18 02 06	infectious waste, contaminated with chemicals infectious anatomical waste, chemically preserved
18 02 02* and 18 02 07* or 20 01 31*	infectious waste, contaminated with cytotoxic and cytostatic medicines (may contain sharps)
18 02 02* and 18 02 08	infectious waste, medicinally contaminated (not cytotoxic or cytostatic) (may contain sharps)
18 02 03	non-infectious anatomical waste, not chemically preserved non-infectious offensive waste non-infectious gypsum wastes (for example, plaster casts and moulds)
18 02 03 and 18 02 05*	non-infectious anatomical waste, chemically preserved, hazardous chemicals
18 02 03 and 18 02 06	non-infectious anatomical waste, chemically preserved, non-hazardous chemicals
18 02 05*	chemicals consisting of or containing hazardous substances
18 02 06	chemicals other than those mentioned in 18 02 05
18 02 07*	cytotoxic and cytostatic medicines
18 02 08	other waste medicines, excluding cytotoxic and cytostatic
<b>19</b>	<b>Wastes from waste management facilities, off-site waste water treatment plants and the preparation of water intended for human consumption and water for industrial use</b>
<b>19 01</b>	<b>wastes from incineration or pyrolysis of waste</b>
19 01 05*	filter cake from gas treatment
19 01 06*	aqueous liquid wastes from gas treatment and other aqueous liquid wastes
19 01 07*	solid wastes from gas treatment
19 01 10*	spent activated carbon from flue-gas treatment
19 01 11*	bottom ash and slag containing hazardous substances
19 01 13*	fly ash containing hazardous substances

19 01 15*	boiler dust containing hazardous substances
19 01 17*	pyrolysis wastes containing hazardous substances
<b>19 02</b>	<b>wastes from physico/chemical treatments of waste (including dechromatation, decyanidation, neutralisation)</b>
19 02 03	premixed wastes composed only of non-hazardous wastes
19 02 04*	premixed wastes composed of at least one hazardous waste
19 02 05*	sludges from physico/chemical treatment containing hazardous substances
19 02 06	sludges from physico/chemical treatment other than those mentioned in 19 02 05
19 02 07*	oil and concentrates from separation
19 02 08*	liquid combustible wastes containing hazardous substances
19 02 09*	solid combustible wastes containing hazardous substances
19 02 10	combustible wastes other than those mentioned in 19 02 08 and 19 02 09
19 02 11*	other wastes containing hazardous substances
<b>19 03</b>	<b>stabilised/solidified wastes</b>
19 03 04*	wastes marked as hazardous, partly stabilised other than 19 03 08
19 03 05	stabilised wastes other than those mentioned in 19 03 04
19 03 06*	wastes marked as hazardous, solidified
19 03 07	solidified wastes other than those mentioned in 19 03 06
<b>19 04</b>	<b>vitrified waste and wastes from vitrification</b>
19 04 02*	fly ash and other flue-gas treatment wastes
19 04 03*	non-vitrified solid phase
<b>19 05</b>	<b>wastes from aerobic treatment of solid wastes</b>
19 05 01	non-composted fraction of municipal and similar wastes
19 05 02	non-composted fraction of animal and vegetable waste
19 05 03	off-specification compost
<b>19 06</b>	<b>wastes from anaerobic treatment of waste</b>
19 06 03	liquor from anaerobic treatment of municipal waste
19 06 04	digestate from anaerobic treatment of municipal waste
19 06 05	liquor from anaerobic treatment of animal and vegetable waste
19 06 06	digestate from anaerobic treatment of animal and vegetable waste
<b>19 07</b>	<b>landfill leachate</b>
19 07 02*	landfill leachate containing hazardous substances
19 07 03	landfill leachate other than those mentioned in 19 07 02
<b>19 08</b>	<b>wastes from waste water treatment plants not otherwise specified</b>
19 08 01	screenings
19 08 02	waste from desanding
19 08 05	sludges from treatment of urban waste water
19 08 06*	saturated or spent ion exchange resins
19 08 07*	solutions and sludges from regeneration of ion exchangers
19 08 08*	membrane system waste containing heavy metals

19 08 09	grease and oil mixture from oil/water separation containing only edible oil and fats
19 08 10*	grease and oil mixture from oil/water separation other than those mentioned in 19 08 09
19 08 11*	sludges containing hazardous substances from biological treatment of industrial waste water
19 08 12	sludges from biological treatment of industrial waste water other than those mentioned in 19 08 11
19 08 13*	sludges containing hazardous substances from other treatment of industrial waste water
19 08 14	sludges from other treatment of industrial waste water other than those mentioned in 19 08 13
<b>19 09</b>	<b>wastes from the preparation of water intended for human consumption or water for industrial use</b>
19 09 01	solid waste from primary filtration and screenings
19 09 02	sludges from water clarification
19 09 03	sludges from decarbonation
19 09 04	spent activated carbon
19 09 05	saturated or spent ion exchange resins
19 09 06	solutions and sludges from regeneration of ion exchangers
<b>19 10</b>	<b>wastes from shredding of metal-containing wastes</b>
19 10 01	iron and steel waste
19 10 02	non-ferrous waste
19 10 03*	fluff-light fraction and dust containing hazardous substances
19 10 04	fluff-light fraction and dust other than those mentioned in 19 10 03
19 10 05*	other fractions containing hazardous substances
19 10 06	other fractions other than those mentioned in 19 10 05
<b>19 11</b>	<b>wastes from oil regeneration</b>
19 11 01*	spent filter clays
19 11 02*	acid tars
19 11 03*	aqueous liquid wastes
19 11 04*	wastes from cleaning of fuel with bases
19 11 05*	sludges from on-site effluent treatment containing hazardous substances
19 11 06	sludges from on-site effluent treatment other than those mentioned in 19 11 05
19 11 07*	wastes from flue-gas cleaning
<b>19 12</b>	<b>wastes from the mechanical treatment of waste (for example sorting, crushing, compacting, pelletising) not otherwise specified</b>
19 12 01	paper and cardboard
19 12 02	ferrous metal
19 12 03	non-ferrous metal
19 12 04	plastic and rubber
19 12 05	Glass
19 12 06*	wood containing hazardous substances

19 12 07	wood other than that mentioned in 19 12 06
19 12 08	Textiles
19 12 09	minerals (for example sand, stones)
19 12 10	combustible waste (refuse derived fuel)
19 12 11*	other wastes (including mixtures of materials) from mechanical treatment of waste containing hazardous substances
19 12 12	other wastes (including mixtures of materials) from mechanical treatment of wastes other than those mentioned in 19 12 11
<b>19 13</b>	<b>wastes from soil and groundwater remediation</b>
19 13 01*	solid wastes from soil remediation containing hazardous substances
19 13 02	solid wastes from soil remediation other than those mentioned in 19 13 01
19 13 03*	sludges from soil remediation containing hazardous substances
19 13 04	sludges from soil remediation other than those mentioned in 19 13 03
19 13 05*	sludges from groundwater remediation containing hazardous substances
19 13 06	sludges from groundwater remediation other than those mentioned in 19 13 05
19 13 07*	aqueous liquid wastes and aqueous concentrates from groundwater remediation containing hazardous substances
19 13 08	aqueous liquid wastes and aqueous concentrates from groundwater remediation other than those mentioned in 19 13 07
<b>20</b>	<b>Municipal wastes (household waste and similar commercial, industrial and institutional wastes) including separately collected fractions</b>
<b>20 01</b>	<b>separately collected fractions (except 15 01)</b>
20 01 01	paper and cardboard
20 01 02	Glass
20 01 08	biodegradable kitchen and canteen waste
20 01 10	Clothes
20 01 11	Textiles
20 01 13*	solvents
20 01 14*	acids
20 01 15*	alkalines
20 01 17*	photochemicals
20 01 19*	pesticides
20 01 23*	discarded equipment containing chlorofluorocarbons
20 01 25	edible oil and fat
20 01 26*	oil and fat other than those mentioned in 20 01 25
20 01 27*	paint, inks, adhesives and resins containing hazardous substances
20 01 28	paint, inks, adhesives and resins other than those mentioned in 20 01 27
20 01 29*	detergents containing hazardous substances
20 01 30	detergents other than those mentioned in 20 01 29
20 01 31*	cytotoxic and cytostatic medicines
20 01 32	medicines other than those mentioned in 20 01 31

20 01 33*	batteries and accumulators included in 16 06 01, 16 06 02 or 16 06 03 and unsorted batteries and accumulators containing these batteries
20 01 34	batteries and accumulators other than those mentioned in 20 01 33
20 01 35*	discarded electrical and electronic equipment other than those mentioned in 20 01 21 and 20 01 23 containing hazardous components
20 01 36	discarded electrical and electronic equipment other than those mentioned in 20 01 21, 20 01 23 and 20 01 35
20 01 37*	wood containing hazardous substances
20 01 38	wood other than that mentioned in 20 01 37
20 01 39	Plastics
20 01 40	Metals
20 01 41	wastes from chimney sweeping
20 01 99	non-infectious offensive waste – municipal, separately collected fractions not from healthcare or research-related sources
<b>20 02</b>	<b>garden and park wastes (including cemetery waste)</b>
20 02 01	biodegradable waste other fractions not otherwise specified
20 02 02	soil and stones other fractions not otherwise specified
20 02 03	other non-biodegradable wastes
<b>20 03</b>	<b>other municipal wastes</b>
20 03 01	mixed municipal waste
20 03 02	waste from markets
20 03 03	street-cleaning residues
20 03 04	septic tank sludge
20 03 06	waste from sewage cleaning
20 03 07	bulky waste



## Schedule 3 – Emissions and monitoring

Table S3.1 Point source emissions to air – emission limits and monitoring requirements.						
Emission point ref. & location	Parameter	Source	Limit (including unit)	Reference period	Monitoring frequency	Monitoring standard(s) or method(s)
A1 (as detailed on the site plan in Schedule 7)	Particulate matter	Flue gases from the HTI	30 mg/m <sup>3</sup>	½-hr average	Continuous	EN 14181
A1 (as detailed on the site plan in Schedule 7)	Particulate matter	Flue gases from the HTI	5 mg/m <sup>3</sup>	daily average	Continuous	EN 14181
A1 (as detailed on the site plan in Schedule 7)	Total Organic Carbon (TOC)	Flue gases from the HTI	20 mg/m <sup>3</sup>	½-hr average	Continuous	EN 14181
A1 (as detailed on the site plan in Schedule 7)	Total Organic Carbon (TOC)	Flue gases from the HTI	10 mg/m <sup>3</sup>	daily average	Continuous	EN 14181
A1 (as detailed on the site plan in Schedule 7)	Hydrogen chloride	Flue gases from the HTI	60 mg/m <sup>3</sup>	½-hr average	Continuous	EN 14181
A1 (as detailed on the site plan in Schedule 7)	Hydrogen chloride	Flue gases from the HTI	6 mg/m <sup>3</sup>	daily average	Continuous	EN 14181
A1 (as detailed on the site plan in Schedule 7)	Hydrogen fluoride	Flue gases from the HTI	1 mg/m <sup>3</sup>	Average of three consecutive measurements of at least 30 minutes each	Quarterly in first year of operation. Then Bi-annually	CEN TS 17340
A1 (as detailed on the site plan in Schedule 7)	Carbon monoxide	Flue gases from the HTI	150 mg/m <sup>3</sup>	95% of all 10-minute averages in any 24-hour period	Continuous	EN 14181

Table S3.1 Point source emissions to air – emission limits and monitoring requirements.						
Emission point ref. & location	Parameter	Source	Limit (including unit)	Reference period	Monitoring frequency	Monitoring standard(s) or method(s)
A1 (as detailed on the site plan in Schedule 7)	Carbon monoxide	Flue gases from the HTI	50 mg/m <sup>3</sup>	daily average	Continuous	EN 14181
A1 (as detailed on the site plan in Schedule 7)	Sulphur dioxide	Flue gases from the HTI	200 mg/m <sup>3</sup>	½-hr average	Continuous	EN 14181
A1 (as detailed on the site plan in Schedule 7)	Sulphur dioxide	Flue gases from the HTI	30 mg/m <sup>3</sup>	daily average	Continuous	EN 14181
A1 (as detailed on the site plan in Schedule 7)	Oxides of nitrogen (NO and NO <sub>2</sub> expressed as NO <sub>2</sub> )	Flue gases from the HTI	400 mg/m <sup>3</sup>	½-hr average	Continuous	EN 14181
A1 (as detailed on the site plan in Schedule 7)	Oxides of nitrogen (NO and NO <sub>2</sub> expressed as NO <sub>2</sub> )	Flue gases from the HTI	120 mg/m <sup>3</sup>	daily average	Continuous	EN 14181
A1 (as detailed on the site plan in Schedule 7)	Cadmium & thallium and their compounds (total)	Flue gases from the HTI	0.02 mg/m <sup>3</sup>	Average of three consecutive measurements of at least 30 minutes each	Quarterly in first year. Then Bi-annually	EN 14385
A1 (as detailed on the site plan in Schedule 7)	Mercury and its compounds	Flue gases from the HTI	0.02 mg/m <sup>3</sup>	Daily average	Continuous	EN 14181
A1 (as detailed on the site plan in Schedule 7)	Sb, As, Pb, Cr, Co, Cu, Mn, Ni and V and their compounds (total)	Flue gases from the HTI	0.3 mg/m <sup>3</sup>	Average of three consecutive measurements of at least 30 minutes each	Quarterly in first year. Then Bi-annually	EN 14385
A1 (as detailed on the site plan in Schedule 7)	Exhaust gas temperature	Flue gases from the HTI	No limit set	-	Continuous	Traceable to national standards

Table S3.1 Point source emissions to air – emission limits and monitoring requirements.						
Emission point ref. & location	Parameter	Source	Limit (including unit)	Reference period	Monitoring frequency	Monitoring standard(s) or method(s)
A1 (as detailed on the site plan in Schedule 7)	Exhaust gas pressure	Flue gases from the HTI	No limit set	-	Continuous	Traceable to national standards
A1 (as detailed on the site plan in Schedule 7)	Exhaust gas flow	Flue gases from the HTI	No limit set	-	Continuous	BS EN 16911-2
A1 (as detailed on the site plan in Schedule 7)	Exhaust gas oxygen content	Flue gases from the HTI	No limit set	-	Continuous	EN 14181
A1 (as detailed on the site plan in Schedule 7)	Exhaust gas water vapour content	Flue gases from the HTI	No limit set	-	Continuous	EN 14181
A1 (as detailed on the site plan in Schedule 7)	Ammonia (NH <sub>3</sub> )	Flue gases from the HTI	10 mg/m <sup>3</sup>	daily average	Continuous	EN 14181
A1 (as detailed on the site plan in Schedule 7)	Nitrous oxide (N <sub>2</sub> O)	Flue gases from the HTI	No limit set	½-hr average and daily average	Continuous	EN 14181
A1 (as detailed on the site plan in Schedule 7)	Carbon dioxide	Flue gases from the HTI	No limit set	Continuous	Continuous	EN 14181
A1 (as detailed on the site plan in Schedule 7)	Dioxins / furans (I-TEQ)	Flue gases from the HTI	0.04 ng/m <sup>3</sup>  and	periodic over minimum 6 hours, maximum 8 hour period  and	Monthly for first 6 months and accelerated monitoring as agreed through IC10, quarterly for following 6 months and then bi-annually;  and	EN 1948 Parts 1, 2 and 3  and

Table S3.1 Point source emissions to air – emission limits and monitoring requirements.						
Emission point ref. & location	Parameter	Source	Limit (including unit)	Reference period	Monitoring frequency	Monitoring standard(s) or method(s)
			0.06 ng/m <sup>3</sup> if long term limit is specified by the Environment Agency after completion of IC10 or specified by the Environment Agency in line with sampling protocol	value over sampling period of 2 to 4 weeks for long term sampling	long term monitoring if specified by the Environment Agency after completion of IC10 or specified by the Environment Agency in line with sampling protocol	CEN TS 1948-5 if specified by the Environment Agency after completion of IC10 or specified by the Environment Agency in line with sampling protocol
A1 (as detailed on the site plan in Schedule 7)	Dioxin-like PCBs (WHO-TEQ Humans / Mammals, Fish, Birds)	Flue gases from the HTI	No limit set	periodic over minimum 6 hours, maximum 8 hour period	Quarterly for first year then bi-annually	EN 1948 Parts 1, 2 and 4
A1 (as detailed on the site plan in Schedule 7)	Dioxins / furans (WHO-TEQ Humans / Mammals, Fish, Birds)	Flue gases from the HTI	No limit set	periodic over minimum 6 hours, maximum 8 hour period	Quarterly in first year. Then Bi-annually	EN 1948 Parts 1, 2 and 3

Table S3.1 Point source emissions to air – emission limits and monitoring requirements.						
Emission point ref. & location	Parameter	Source	Limit (including unit)	Reference period	Monitoring frequency	Monitoring standard(s) or method(s)
A1 (as detailed on the site plan in Schedule 7)	Polybrominated dibenzo-dioxins and furans	Flue gases from the HTI	No limit set	periodic over minimum 6 hours, maximum 8 hour period	Quarterly in first year. Then Bi-annually Not required unless wastes containing brominated flame retardants are burned	Method based on procedural requirements of EN 1948
A1 (as detailed on the site plan in Schedule 7)	Specific individual poly-cyclic aromatic hydrocarbons (PAHs), as specified in Schedule 6.	Flue gases from the HTI	No limit set	periodic over minimum 6 hours, maximum 8 hour period	Quarterly in first year then annually	BS ISO 11338 Parts 1 and 2.
A2 (as detailed on the site plan in Schedule 7)	Carbon monoxide	Back-up electrical generator	No limit set	In line with web guide 'Monitoring stack emissions: low risk MCPs and specified generators' Published 16 February 2021 (formerly known as TGN M5)	First measurement within 4 months of first operation then every 1500 hours of operation or once every five years (whichever comes first).	In line with web guide 'Monitoring stack emissions: low risk MCPs and specified generators' Published 16 February 2021 (formerly known as TGN M5)
A3 (as detailed on the site plan in Schedule 7)	None	Emergency release valve	-	-	-	-

<b>Table S3.1(a) Point source emissions to air during abnormal operation of incineration plant – emission limits and monitoring requirements</b>						
<b>Emission point ref. &amp; location</b>	<b>Parameter</b>	<b>Source</b>	<b>Limit (including unit)</b>	<b>Reference period</b>	<b>Monitoring frequency</b>	<b>Monitoring standard or method</b>
A1 (as detailed on the site plan in Schedule 7)	Particulate matter		150 mg/m <sup>3</sup>	½-hr average	Continuous	EN 14181 or alternative surrogate as agreed in writing with the environment agency during failure of the continuous emission monitor
A1 (as detailed on the site plan in Schedule 7)	Total Organic Carbon (TOC)		20 mg/m <sup>3</sup>	½-hr average	Continuous	EN 14181  or alternative surrogate as agreed in writing with the environment agency during failure of the continuous emission monitor
A1 (as detailed on the site plan in Schedule 7)	Carbon monoxide		150 mg/m <sup>3</sup>	95% of all 10-minute averages in any 24-hour period	Continuous	EN 14181  or alternative surrogate as agreed in writing with the environment agency during failure of the continuous emission monitor

Table S3.2 Point Source emissions to water (other than sewer) and land – emission limits and monitoring requirements						
Emission point ref. & location	Source	Parameter	Limit (incl. unit)	Reference Period	Monitoring frequency	Monitoring standard or method
W1 (as detailed on the site plan in Schedule 7)	Clean, uncontaminated surface water from roofs and areas of hardstanding via oil interceptor to adjacent Rhine	No parameters set	No limit set			

Table S3.3 Point source emissions to sewer, effluent treatment plant or other transfers off-site– emission limits and monitoring requirements						
Emission point ref. & location	Source	Parameter	Limit (incl. unit)	Reference Period	Monitoring frequency	Monitoring standard or method
S1 (as detailed on the site plan in Schedule 7)	Process effluent (boiler blowdown).	No parameters set	No limits set			
	Bin washing.					
S1 (as detailed on the site plan in Schedule 7)	Waste water from treatment of exhaust gases via effluent treatment plant.	pH	6 - 9.5	Instantaneous	Continuous	BS ISO 10523
		Discharge flow rate	110 m <sup>3</sup> /day	24-hour total	Continuous	MCERTS self-monitoring of flow scheme
		Discharge Temperature	No limits set	Continuous	Continuous	In-line temperature probe
		Suspended solids	45 mg/l Note 1	24-hour flow proportional composite sample	Daily	BS EN 872

Table S3.3 Point source emissions to sewer, effluent treatment plant or other transfers off-site– emission limits and monitoring requirements						
Emission point ref. & location	Source	Parameter	Limit (incl. unit)	Reference Period	Monitoring frequency	Monitoring standard or method
S1 (as detailed on the site plan in Schedule 7)	Waste water from treatment of exhaust gases via effluent treatment plant.	Arsenic and its compounds expressed as arsenic (As)	0.05 mg/l	24-hour flow proportional composite sample	Monthly	BS EN ISO 118 85  or  BS EN ISO 172 94-2  or BS EN ISO 155 86
		Cadmium and its compounds expressed as cadmium (Cd)	0.03 mg/l			
		Chromium and its compounds expressed as chromium (Cr)	0.1 mg/l			
		Copper and its compounds expressed as copper (Cu)	0.15 mg/l			
		Nickel and its compounds expressed as nickel (Ni)	0.15 mg/l			
		Lead and its compounds expressed as lead (Pb)	0.06 mg/l			
		Antimony and its compounds expressed as antimony (Sb)	0.9 mg/l			



Table S3.3 Point source emissions to sewer, effluent treatment plant or other transfers off-site– emission limits and monitoring requirements						
Emission point ref. & location	Source	Parameter	Limit (incl. unit)	Reference Period	Monitoring frequency	Monitoring standard or method
S1 (as detailed on the site plan in Schedule 7)	Waste water from treatment of exhaust gases via effluent treatment plant.	Thallium and its compounds expressed as thallium (Tl)	0.03 mg/l	24-hour flow proportional composite sample	Monthly	BS EN ISO 118 85  or  BS EN ISO 172 94-2  or BS EN ISO 155 86
		Zinc and its compounds expressed as zinc (Zn)	0.5 mg/l			BS EN 12846 or BS EN ISO 178 52
		Mercury and its compounds expressed as mercury (Hg)	0.01 mg/l			BS EN ISO 118 85  or  BS EN ISO 172 94-2  or BS EN ISO 155 86
		Molybdenum	No limit			BS ISO 18073 or BS ISO 17858
		Dioxins and furans; defined as the sum of the individual dioxins and furans I-TEQ	0.05 ng/l	24-hour flow proportional composite sample	Monthly, or otherwise bi-annually if agreed in writing with the Environment Agency that emissions are sufficiently stable as demonstrated by a suitable methodology	
	Note 1: Limit based on mass balance calculation as described in IED article 46, paragraph 4, or otherwise as agreed in writing with the Environment Agency					

Table S3.4 Process monitoring requirements				
Emission point reference or source or description of point of measurement	Parameter	Monitoring frequency	Monitoring standard or method	Other specifications
Location close to the Combustion Chamber inner wall or as identified and justified in Application.	Temperature (° C)	Continuous	Traceable to national standards	As agreed in writing with the Agency.
Incineration plant	Boiler efficiency	Within 6 months of first operation and then within 6 months of any modification that significantly affects energy efficiency	Performance test at full load or other method as agreed in writing with the Environment Agency	

Table S3.5 Residue quality					
Emission point reference or source or description of point of measurement	Parameter	Limit	Monitoring frequency	Monitoring standard or method *	Other specifications
Bottom Ash	LOI  or otherwise as agreed in writing with the Environment Agency	5%  or otherwise as agreed in writing with the Environment Agency	Monthly in the first year of operation. Then Quarterly   or otherwise as agreed in writing with the Environment Agency	EN 14899 and either EN 15169 or EN 15935  or otherwise as agreed in writing with the Environment Agency	Environment Agency Guidance, 'TGN M4 – Guidelines for Ash Sampling and Analysis'
Bottom Ash	Metals (Antimony, Cadmium, Thallium, Mercury, Lead, Chromium, Copper, Manganese, Nickel, Arsenic, Cobalt, Vanadium, Zinc) and their compounds, dioxins/furans and dioxin-like PCBs.		Monthly in the first year of operation. Then Quarterly	Environment Agency Guidance, 'TGN M4 – Guidelines for Ash Sampling and Analysis'	
Bottom Ash	Total soluble fraction and metals (Antimony, Cadmium, Thallium, Mercury, Lead, Chromium, Copper, Manganese, Nickel, Arsenic, Cobalt, Vanadium, Zinc) soluble fractions		Before use of a new disposal or recycling route	Environment Agency Guidance, 'TGN M4 – Guidelines for Ash Sampling and Analysis'	

<b>Table S3.5 Residue quality</b>					
<b>Emission point reference or source or description of point of measurement</b>	<b>Parameter</b>	<b>Limit</b>	<b>Monitoring frequency</b>	<b>Monitoring standard or method *</b>	<b>Other specifications</b>
Effluent treatment plant filter cake	Metals (Antimony, Cadmium, Thallium, Mercury, Lead, Chromium, Copper, Manganese, Nickel, Arsenic, Cobalt, Vanadium, Zinc) and their compounds, dioxins/furans and dioxin-like PCBs.		Monthly in the first year of operation. Then Quarterly	Environment Agency Guidance, 'TGN M4 – Guidelines for Ash Sampling and Analysis'	
Effluent treatment plant filter cake	Total soluble fraction and metals (Antimony, Cadmium, Thallium, Mercury, Lead, Chromium, Copper, Manganese, Nickel, Arsenic, Cobalt, Vanadium, Zinc) soluble fractions		Before use of a new disposal or recycling route	Environment Agency Guidance, 'TGN M4 – Guidelines for Ash Sampling and Analysis'	
APC Residues	Metals (Antimony, Cadmium, Thallium, Mercury, Lead, Chromium, Copper, Manganese, Nickel, Arsenic, Cobalt, Vanadium, Zinc) and their compounds, dioxins/furans and dioxin-like PCBs.		Monthly in the first year of operation. Then Quarterly	Environment Agency Guidance, 'TGN M4 – Guidelines for Ash Sampling and Analysis'	
APC Residues	Total soluble fraction and metals (Antimony, Cadmium, Thallium, Mercury, Lead, Chromium, Copper, Manganese, Nickel, Arsenic, Cobalt, Vanadium, Zinc) soluble fractions		Before use of a new disposal or recycling route	Environment Agency Guidance, 'TGN M4 – Guidelines for Ash Sampling and Analysis'	

\* Or other equivalent standard as agreed in writing with the Environment Agency.

## Schedule 4 – Reporting

Drafting note: if the operator is required to submit Resource Efficiency Physical Index (REPI) data to the Pollution Inventory, please ensure that no metrics are repeated in this schedule.

Parameters, for which reports shall be made, in accordance with conditions of this permit, are listed below.

<b>Table S4.1 Reporting of monitoring data</b>			
<b>Parameter</b>	<b>Emission or monitoring point/reference</b>	<b>Reporting period</b>	<b>Period begins</b>
Emissions to air Parameters as required by condition 3.6.1.	A1	Quarterly	1 Jan, 1 Apr, 1 Jul and 1 Oct
Emissions to sewer Parameters as required by condition 3.6.1	S1	Quarterly	1 Jan, 1 Apr, 1 Jul and 1 Oct
LOI or otherwise as agreed in writing with the Environment Agency Parameters as required by condition 3.6.1	Bottom Ash	Quarterly (but monthly for the first year of operation)	1 Jan, 1 Apr, 1 Jul and 1 Oct
Metals (Antimony, Cadmium, Thallium, Mercury, Lead, Chromium, Copper, Manganese, Nickel, Arsenic, Cobalt, Vanadium, Zinc) and their compounds, dioxins/furans and dioxin-like PCBs Parameters as required by condition 3.5.1	Bottom Ash	Quarterly (but monthly for the first year of operation)	1 Jan, 1 Apr, 1 Jul and 1 Oct
Total soluble fraction and metals (Antimony, Cadmium, Thallium, Mercury, Lead, Chromium, Copper, Manganese, Nickel, Arsenic, Cobalt, Vanadium, Zinc) soluble fractions Parameters as required by condition 3.6.1	Bottom Ash	Before use of a new disposal or recycling route	
Metals (Antimony, Cadmium, Thallium, Mercury, Lead, Chromium, Copper, Manganese, Nickel, Arsenic, Cobalt, Vanadium, Zinc) and their compounds, dioxins/furans and dioxin-like PCBs Parameters as required by condition 3.5.1	Effluent treatment plant filter cake	Quarterly (but monthly for the first year of operation)	1 Jan, 1 Apr, 1 Jul and 1 Oct
Total soluble fraction and metals (Antimony, Cadmium, Thallium, Mercury, Lead, Chromium, Copper, Manganese, Nickel, Arsenic, Cobalt, Vanadium, Zinc) soluble fractions Parameters as required by condition 3.6.1	Effluent treatment plant filter cake	Before use of a new disposal or recycling route	

<b>Table S4.1 Reporting of monitoring data</b>			
<b>Parameter</b>	<b>Emission or monitoring point/reference</b>	<b>Reporting period</b>	<b>Period begins</b>
Metals (Antimony, Cadmium, Thallium, Mercury, Lead, Chromium, Copper, Manganese, Nickel, Arsenic, Cobalt, Vanadium, Zinc) and their compounds, dioxins/furans and dioxin-like PCBs Parameters as required by condition 3.6.1	APC Residues	Quarterly (but monthly for the first year of operation)	1 Jan, 1 Apr, 1 Jul and 1 Oct
Total soluble fraction and metals (Antimony, Cadmium, Thallium, Mercury, Lead, Chromium, Copper, Manganese, Nickel, Arsenic, Cobalt, Vanadium, Zinc) soluble fractions Parameters as required by condition 3.6.1	APC Residues	Before use of a new disposal or recycling route	

<b>Table S4.2: Annual production/treatment</b>	
<b>Parameter</b>	<b>Units</b>
Total hazardous waste incinerated	tonnes
Total non-hazardous waste incinerated	tonnes
Total hazardous waste treated in the re-packaging facility	tonnes
Total non-hazardous waste treated in the re-packaging facility	tonnes
Electrical energy produced	kWh
Thermal energy produced e.g. steam for export	kWh
Electrical energy exported	kWh
Electrical energy used on installation	kWh
Waste heat utilised by the installation	kWh

<b>Table S4.3 Performance parameters</b>		
<b>Parameter</b>	<b>Frequency of assessment</b>	<b>Units</b>
Annual Report as required by condition 4.2.2	Annually	-
Electrical energy exported, imported and used at the installation	Annually	kWh / tonne of waste incinerated
Fuel oil consumption	Annually	kg / tonne of waste incinerated
Bottom Ash residue	Annually	Route, tonnes and tonnes / tonne of waste incinerated
APC residue	Annually	Route, tonnes and tonnes / tonne of waste incinerated

<b>Table S4.3 Performance parameters</b>		
<b>Parameter</b>	<b>Frequency of assessment</b>	<b>Units</b>
Ammonia / Urea consumption	Annually	kg / tonne of waste incinerated
Activated Carbon consumption	Annually	kg / tonne of waste incinerated
Lime	Annually	kg / tonne of waste incinerated
Water consumption	Annually	kg / tonne of waste incinerated
Periods of abnormal operation	Annually	No of occasions and cumulative hours for current calendar year for each line.

<b>Table S4.4 Reporting forms</b>		
<b>Media/parameter</b>	<b>Reporting format</b>	<b>Date of form</b>
Annual report required by condition 4.2.2	Annual performance report template	-
Air	Forms air 1-9 or other forms as agreed in writing by the Environment Agency	27/01/2026
Sewer	Form sewer 1 or other form as agreed in writing by the Environment Agency	27/01/2026
Residue quality	Form residue 1 and 2 or other form as agreed in writing by the Environment Agency	27/01/2026

## Schedule 5 – Notification

These pages outline the information that the operator must provide.

Units of measurement used in information supplied under Part A and B requirements shall be appropriate to the circumstances of the emission. Where appropriate, a comparison should be made of actual emissions and authorised emission limits.

If any information is considered commercially confidential, it should be separated from non-confidential information, supplied on a separate sheet and accompanied by an application for commercial confidentiality under the provisions of the EP Regulations.

### Part A

Permit Number	
Name of operator	
Location of Facility	
Time and date of the detection	

<b>(a) Notification requirements for any malfunction, breakdown or failure of equipment or techniques, accident, or emission of a substance not controlled by an emission limit which has caused, is causing or may cause significant pollution</b>	
<b>To be notified within 24 hours of detection</b>	
Date and time of the event	
Reference or description of the location of the event	
Description of where any release into the environment took place	
Substances(s) potentially released	
Best estimate of the quantity or rate of release of substances	
Measures taken, or intended to be taken, to stop any emission	
Description of the failure or accident.	

<b>(b) Notification requirements for the breach of a limit</b>	
<b>To be notified within 24 hours of detection unless otherwise specified below</b>	
Emission point reference/ source	
Parameter(s)	
Limit	
Measured value and uncertainty	
Date and time of monitoring	
Measures taken, or intended to be taken, to stop the emission	



Time periods for notification following detection of a breach of a limit	
Parameter	Notification period

(c) Notification requirements for the breach of permit conditions not related to limits	
To be notified within 24 hours of detection	
Condition breached	
Date, time and duration of breach	
Details of the permit breach i.e. what happened including impacts observed.	
Measures taken, or intended to be taken, to restore permit compliance.	

(d) Notification requirements for the detection of any significant adverse environmental effect	
To be notified within 24 hours of detection	
Description of where the effect on the environment was detected	
Substances(s) detected	
Concentrations of substances detected	
Date of monitoring/sampling	

## Part B – to be submitted as soon as practicable

Any more accurate information on the matters for notification under Part A.	
Measures taken, or intended to be taken, to prevent a recurrence of the incident	
Measures taken, or intended to be taken, to rectify, limit or prevent any pollution of the environment which has been or may be caused by the emission	
The dates of any unauthorised emissions from the facility in the preceding 24 months.	

Name*	
Post	
Signature	
Date	

\* authorised to sign on behalf of the operator

## Schedule 6 – Interpretation

“abatement equipment” means that equipment dedicated to the removal of polluting substances from releases from the installation to air or water media.

“abnormal operation” means any technically unavoidable stoppages, disturbances, or failures of the plant or the measurement devices. Abnormal operation starts as defined in condition 2.3.15 and ends as defined in condition 2.3.16. Abnormal operation is limited to 4 hours for a single occurrence and a total of 60 hours per year per line.

“accident” means an accident that may result in pollution.

“APC residues” means air pollution control residues.

“application” means the application for this permit, together with any additional information supplied by the operator as part of the application and any response to a notice served under Schedule 5 to the EP Regulations.

“authorised officer” means any person authorised by the Environment Agency under section 108(1) of The Environment Act 1995 to exercise, in accordance with the terms of any such authorisation, any power specified in section 108(4) of that Act.

“BAT conclusions” means Commission Implementing Decision (EU) 2019/2010 of 12 November 2019 establishing the best available techniques (BAT) conclusions, under Directive 2010/75/EU of the European Parliament and of the Council, for Waste Incineration.

“bi-annually” means twice per year with at least five months between tests.

“bottom ash” means ash discharged from the screw conveyor

“CEM” means Continuous emission monitor.

“CEN” means Comité Européen de Normalisation.

“building” is a covered structure enclosed on all vertical sides that provides sheltered cover and contains emissions of, for example, noise, particulate matter, odour and litter.

“clinical” waste means waste from a healthcare activity (including veterinary healthcare) that:

- a) contains viable micro-organisms or their toxins which are known or reliably believed to cause disease in humans or other living organisms
- b) contains or is contaminated with a medicine that contains a biologically active pharmaceutical agent
- c) is a sharp, or a body fluid or other biological material (including human and animal tissue) containing or contaminated with a hazardous substance

and waste of a similar nature from a non-healthcare activity.

“cytotoxic and cytostatic medicines” are medicinal products that possess one or more of the hazardous properties acutely toxic, carcinogenic, mutagenic or toxic for reproduction.

“commissioning” means testing of the new incineration plant that involves any operation of the furnace or as agreed with the Environment Agency.

“container” is a receptacle for waste for example bags, bins, boxes, drums, IBCs and blister packs. Wastes may be packaged in more than one receptacle for example a bag in a box.

“D” means a disposal operation provided for in Annex I to Directive 2008/98/EC of the European Parliament and of the Council of 19 November 2008 on Waste.

“daily average emissions value” means the average of at least 43 valid half hourly averages or for CO the average of at least 43 valid half hourly averages or 129 valid 10 min averages.

“dioxin and furans” means polychlorinated dibenzo-p-dioxins and polychlorinated dibenzofurans.

“disposal” means any of the operations provided for in Annex I to Directive 2008/98/EC of the European Parliament and of the Council on waste.

“emissions of substances not controlled by emission limits” means emissions of substances to air, water or land from the activities, either from the emission points specified in schedule 3 or from other localised or diffuse sources, which are not controlled by an emission limit.

“emissions to land” includes emissions to groundwater.

“EP Regulations” means The Environmental Permitting (England and Wales) Regulations SI 2016 No.1154 and words and expressions used in this permit which are also used in the Regulations have the same meanings as in those Regulations.

“groundwater” means all water, which is below the surface of the ground in the saturation zone and in direct contact with the ground or subsoil.

“Hazardous property” has the meaning in Annex III of the Waste Framework Directive.

“Hazardous waste” has the meaning given in the Hazardous Waste (England and Wales) Regulations 2005 (as amended).

“healthcare waste” means waste produced during human or animal healthcare, or related research activities. It covers both clinical and offensive waste. Wastes produced by healthcare in the community, and similar types of waste produced by non-healthcare activities are included, for example:

- cosmetic body piercing and body art
- non-medicinal procedures in the hair and beauty sector
- substance abuse
- crime scene clean-up.

“impermeable surface” means a surface or pavement constructed and maintained to a standard sufficient to prevent the transmission of liquids beyond the pavement surface.

“incineration line” means all of the incineration equipment related to a common discharge to air location.

“Industrial Emissions Directive” means DIRECTIVE 2010/75/EU OF THE EUROPEAN PARLIAMENT AND OF THE COUNCIL of 24 November 2010 on industrial emissions.

“infectious clinical waste” means clinical waste incorporating substances containing viable micro-organisms or their toxins which are known or reliably believed to cause disease in man or other living organisms.

“ISO” means International Standards Organisation.

“List of Wastes” means the list of wastes established by Commission Decision 2000/532/EC replacing Decision 94/3/EC establishing a list of wastes pursuant to Article 1(a) of Council Directive 75/442/EEC on waste and Council Decision 94/904/EC establishing a list of hazardous waste pursuant to Article 1(4) of Council Directive 91/689/EEC on hazardous waste, as amended from time to time.

“LOI” means loss on ignition a technique used to determine the combustible material by heating the ash residue to a high temperature.

“MCERTS” means the Environment Agency’s Monitoring Certification Scheme.

“medicines” are “medicinal products” as defined in Regulation 130 of Part VIII of the Medicines Act 1968. Waste medicines (or pharmaceutical waste) include:

- expired, unused, spilt and contaminated medical products that are no longer required and need to be disposed of appropriately;
- discarded items contaminated with medicines such as bottles or boxes with residues, gloves, masks, connecting tubing, syringe bodies and drug vials.

“mixing of hazardous waste” means mixing hazardous waste as defined by Regulation 18 of the Hazardous Waste (England and Wales) Regulations 2005.

“offensive waste” is waste that:

- is not clinical waste
- contains body fluids, secretions or excretions
- falls within waste codes 18 01 04, 18 02 03 or 20 01 99.

“PAH” means Poly-cyclic aromatic hydrocarbon, and comprises Anthanthrene, Benzo[a]anthracene, Benzo[b]fluoranthene, Benzo[k]fluoranthene, Benzo[b]naph(2,1-d)thiophene, Benzo[c]phenanthrene, Benzo[ghi]perylene, Benzo[a]pyrene, Cholanthrene, Chrysene, Cyclopenta[c,d]pyrene, Dibenzo[ah]anthracene, Dibenzo[a,i]pyrene Fluoranthene, Indo[1,2,3-cd]pyrene, Naphthalene.

“PCB” means Polychlorinated Biphenyl. Dioxin-like PCBs are the non-ortho and mono-ortho PCBs listed in the table below.

“pests” means Birds, Vermin and Insects.

“quarter” means a calendar year quarter commencing on 1 January, 1 April, 1 July or 1 October.

“recovery” means any of the operations provided for in Annex II to Directive 2008/98/EC of the European Parliament and of the Council on waste.

“Solvent Emissions Directive” means Directive 1999/13/EC (as amended by Directive 2004/42/EC) on the limitation of emissions of volatile organic compounds due to the use of organic solvents in certain activities and installations.

“start up” is any period, where the plant has been non-operational, until waste has been fed to the plant in a sufficient quantity to initiate steady-state conditions as described in the application or as agreed in writing with the Environment Agency.

“shut down” is any period where the plant is being returned to a non-operational state as described in the application or as agreed in writing with the Environment Agency.

“TOC” means Total Organic Carbon. In respect of releases to air, this means the gaseous and vaporous organic substances, expressed as TOC. [In respect of Bottom Ash, this means the total carbon content of all organic species present in the ash (excluding carbon in elemental form).

“waste code” means the six digit code referable to a type of waste in accordance with the List of Wastes and in relation to hazardous waste, includes the asterisk.

“Waste Framework Directive” or “WFD” means Waste Framework Directive 2008/98/EC of the European Parliament and of the Council on waste.

“year” means calendar year ending 31 December.

Where a minimum limit is set for any emission parameter, for example pH, reference to exceeding the limit shall mean that the parameter shall not be less than that limit.

Unless otherwise stated, any references in this permit to concentrations of substances in emissions into air means:

- in relation to emissions from combustion processes, the concentration in dry air at a temperature of 273K, at a pressure of 101.3 kPa and with an oxygen content of 3% dry for liquid and gaseous fuels, 6% dry for solid fuels; and/or
- in relation to emissions from non-combustion sources, the concentration at a temperature of 273K and at a pressure of 101.3 kPa, with no correction for water vapour content
- in relation to gases from incineration plants other than those burning waste oil, the concentration in dry air at a temperature of 273K, at a pressure of 101.3 kPa and with an oxygen content of 11% dry
- where hazardous wastes are burned in plant covered by Schedule 13 of Environmental Permitting Regulations and the emissions of pollutants are reduced by gas treatment, standardisation of the gas with respect to oxygen content shall be carried out only if the oxygen concentration measured over the same period exceeds the relevant oxygen content defined in conditions (a) – (c) above. In other cases, the measured emissions shall be standardised only for moisture, pressure and temperature.

For dioxins/furans and dioxin-like PCBs the determination of the toxic equivalence concentration (I-TEQ, & WHO-TEQ for dioxins/furans, WHO-TEQ for dioxin-like PCBs) stated as a release limit and/ or reporting requirement, the mass concentrations of the following congeners have to be multiplied with their respective toxic equivalence factors before summing. When reporting on measurements of dioxins/furans and dioxin-like PCBs, the toxic equivalence concentrations should be reported as a range based on: all congeners less than the detection limit assumed to be zero as a minimum, and all congeners less than the detection limit assumed to be at the detection limit as a maximum. However the minimum value should be used when assessing compliance with the emission limit value in table S3.1.

<b>TEF schemes for dioxins and furans</b>				
<b>Congener</b>	<b>I-TEF</b>	<b>WHO-TEF</b>		
	<b>1990</b>	<b>2005</b>	<b>1997/8</b>	
		<b>Humans / Mammals</b>	<b>Fish</b>	<b>Birds</b>
<b>Dioxins</b>				
2,3,7,8-TCDD	1	1	1	1
1,2,3,7,8-PeCDD	0.5	1	1	1
1,2,3,4,7,8-HxCDD	0.1	0.1	0.5	0.05
1,2,3,6,7,8-HxCDD	0.1	0.1	0.01	0.01
1,2,3,7,8,9-HxCDD	0.1	0.1	0.01	0.1
1,2,3,4,6,7,8-HpCDD	0.01	0.01	0.001	<0.001
OCDD	0.001	0.0003	-	-
<b>Furans</b>				
2,3,7,8-TCDF	0.1	0.1	0.05	1
1,2,3,7,8-PeCDF	0.05	0.03	0.05	0.1
2,3,4,7,8-PeCDF	0.5	0.3	0.5	1
1,2,3,4,7,8-HxCDF	0.1	0.1	0.1	0.1
1,2,3,7,8,9-HxCDF	0.1	0.1	0.1	0.1
1,2,3,6,7,8-HxCDF	0.1	0.1	0.1	0.1
2,3,4,6,7,8-HxCDF	0.1	0.1	0.1	0.1
1,2,3,4,6,7,8-HpCDF	0.01	0.01	0.01	0.01
1,2,3,4,7,8,9-HpCDF	0.01	0.01	0.01	0.01
OCDF	0.001	0.0003	0.0001	0.0001

<b>TEF schemes for dioxin-like PCBs</b>			
<b>Congener</b>	<b>WHO-TEF</b>		
	<b>2005</b>	<b>1997/8</b>	
	<b>Humans / mammals</b>	<b>Fish</b>	<b>Birds</b>
<b>Non-ortho PCBs</b>			
3,4,4',5-TCB (81)	0.0001	0.0005	0.1

TEF schemes for dioxin-like PCBs			
Congener	WHO-TEF		
	2005	1997/8	
	Humans / mammals	Fish	Birds
3,3',4,4'-TCB (77)	0.0003	0.0001	0.05
3,3',4,4',5 - PeCB (126)	0.1	0.005	0.1
3,3',4,4',5,5'-HxCB(169)	0.03	0.00005	0.001
<b>Mono-ortho PCBs</b>			
2,3,3',4,4'-PeCB (105)	0.00003	<0.000005	0.0001
2,3,4,4',5-PeCB (114)	0.00003	<0.000005	0.0001
2,3',4,4',5-PeCB (118)	0.00003	<0.000005	0.00001
2',3,4,4',5-PeCB (123)	0.00003	<0.000005	0.00001
2,3,3',4,4',5-HxCB (156)	0.00003	<0.000005	0.0001
2,3,3',4,4',5'-HxCB (157)	0.00003	<0.000005	0.0001
2,3',4,4',5,5'-HxCB (167)	0.00003	<0.000005	0.00001
2,3,3',4,4',5,5'-HpCB (189)	0.00003	<0.000005	0.00001

When the following terms appear in the waste code list in Schedule 2, table 2.2 or S2.3, for those tables, they have the meaning given below:

'hazardous substance' means a substance classified as hazardous as a consequence of fulfilling the criteria laid down in parts 2 to 5 of Annex I to Regulation (EC) No 1272/2008

'heavy metal' means any compound of antimony, arsenic, cadmium, chromium (VI), copper, lead, mercury, nickel, selenium, tellurium, thallium and tin, as well as these materials in metallic form, as far as these are classified as hazardous substances

'PCBs' means

- polychlorinated biphenyls
- polychlorinated terphenyls
- monomethyl-tetrachlorodiphenyl methane, Monomethyl-dichloro-diphenyl methane, Monomethyldibromo-diphenyl methane
- any mixture containing any of the above mentioned substances in a total of more than 0,005 %by weight

'transition metals' means any of the following metals: any compound of scandium, vanadium, manganese, cobalt, copper, yttrium, niobium, hafnium, tungsten, titanium, chromium, iron, nickel, zinc, zirconium, molybdenum and tantalum, as well as these materials in metallic form, as far as these are classified as hazardous substances

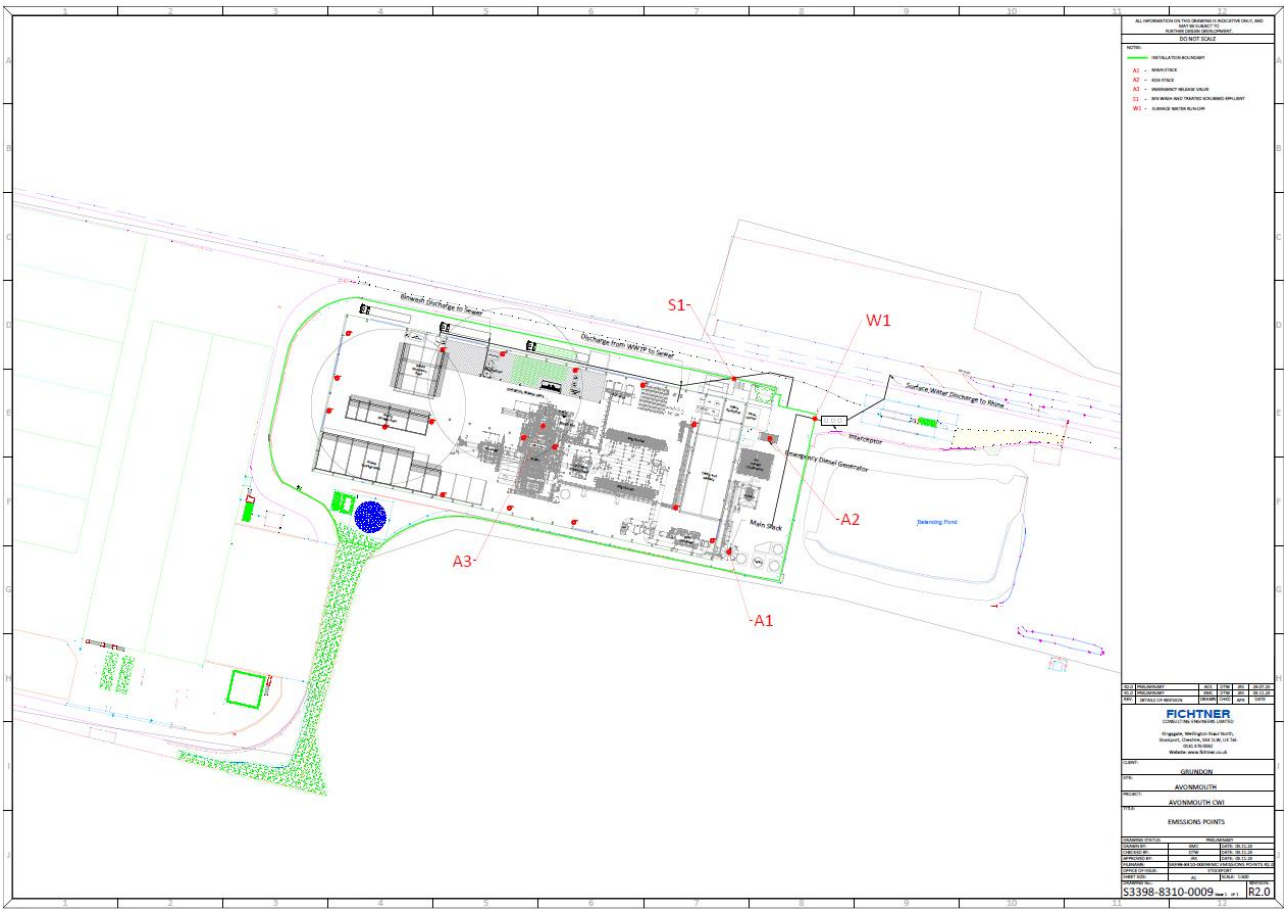
'stabilisation' means processes which change the hazardousness of the constituents in the waste and transform hazardous waste into non-hazardous waste

'solidification' means processes which only change the physical state of the waste by using additives without changing the chemical properties of the waste

‘partly stabilised wastes’ means wastes containing, after the stabilisation process, hazardous constituents which have not been changed completely into non-hazardous constituents and could be released into the environment in the short, middle or long term.



# Schedule 7 – Site plan



END OF PERMIT