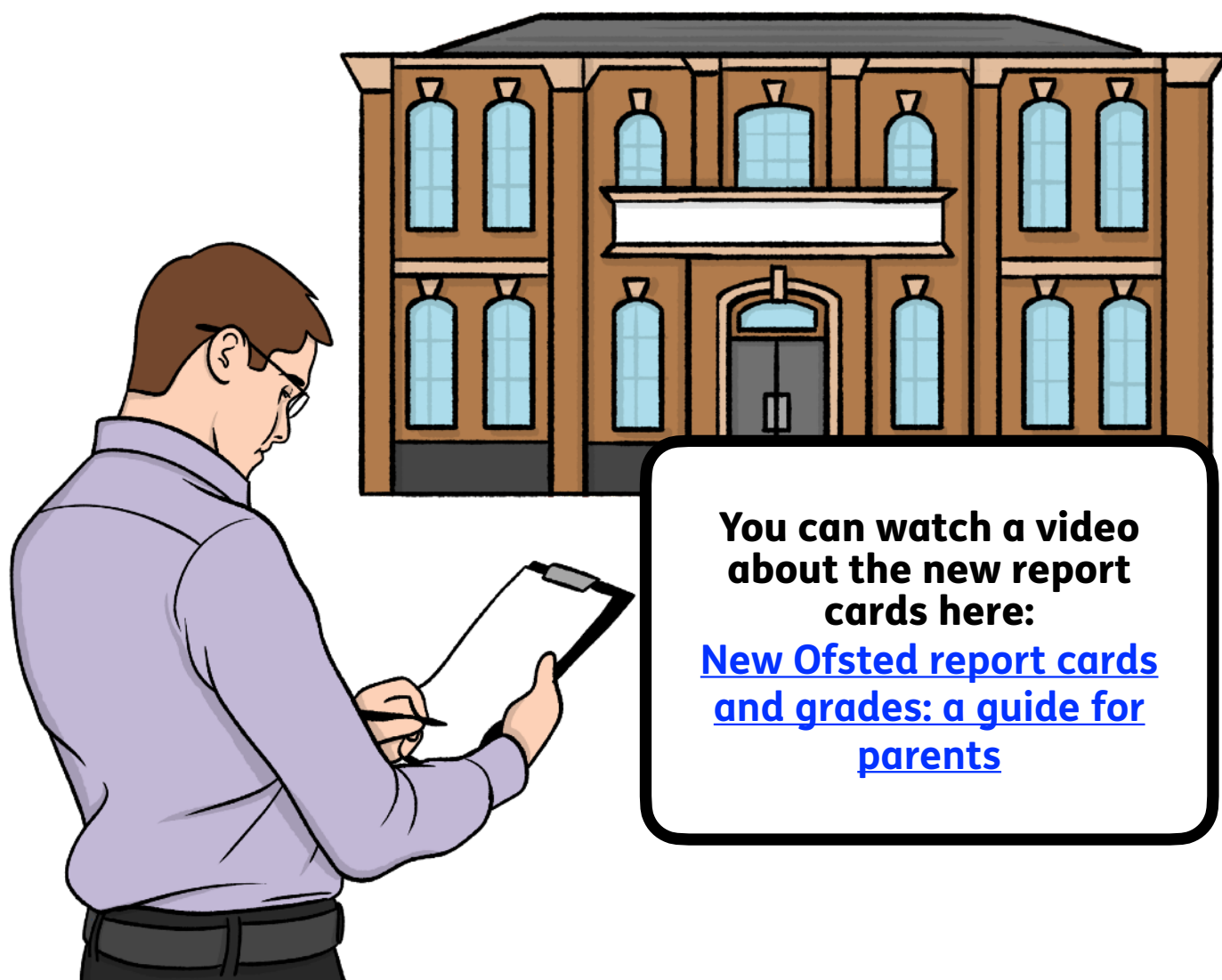




# Ofsted report cards

How we look at your child's school,  
college or childcare provider



**You can watch a video  
about the new report  
cards here:**

**[New Ofsted report cards  
and grades: a guide for  
parents](#)**

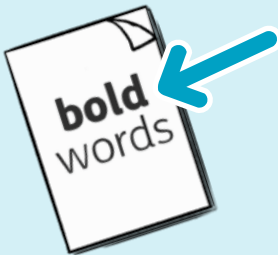
# Easy Read



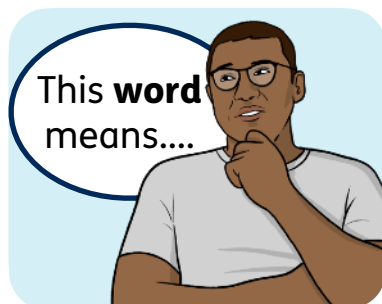
This is an Easy Read version of some information. It may not include all of the information but it will tell you about the important parts.



This Easy Read booklet uses easier words and pictures. Some people may still want help to read it.



Some words are in **bold** – this means the writing is thicker and darker. These are important words in the booklet.



Sometimes if a bold word is hard to understand, we will explain what it means.



[Blue and underlined](#) words show links to websites and email addresses. You can click on these links on a computer.

# What is in this booklet

About this booklet.....	4
Our new way of grading .....	5
What the new grades tell you .....	9
More information .....	14
Find out more .....	16



You can fill in a quick survey to say what you think about this Easy Read booklet:  
[www.easy-read-online.co.uk/easy-read-feedback-survey](http://www.easy-read-online.co.uk/easy-read-feedback-survey)

# About this booklet



This booklet is from **Ofsted**.

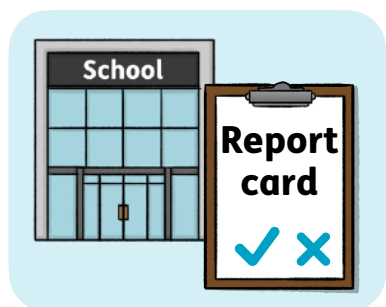
We check childcare, schools and colleges to see what is working well and what could be better.



We have changed how we tell people what we find out about childcare, schools and colleges.

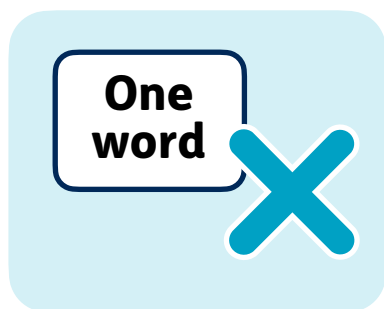


We have made report cards so people can easily see what is going well and what needs to change.



This booklet will tell you more about the report cards and how we grade childcare, schools and colleges.

# Our new way of grading



The main change with the new report cards is that we no longer give one word to describe the childcare, school or college.



Before, we might have said it is **outstanding, good, requires improvement, or inadequate.**



The new report cards will have colours to show grades for different areas. These are the parts of the childcare, school or college that are most important to you.

The areas we will grade are things like:



- attendance and behaviour



- achievement – how well children do



- how children get better at doing things, and improve their wellbeing



- how well the childcare, school or college meets the needs of all children

The new grades we give these areas are:



- exceptional



- strong standard



- expected standard



- needs attention



- urgent improvement



We will also say whether childcare, schools or colleges have **met** or **not met** what they need to do with **safeguarding**.

**Safeguarding** is making sure everyone in the childcare, school or college is safe.



These new grades are not like the old ones.



This is a new way of telling you how childcare, schools and colleges are doing.



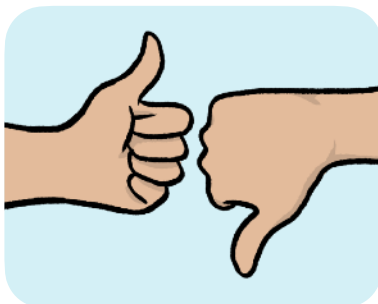
# What the new grades tell you



We will explain what each of the 5 new grades means.



You may see a mix of the grades in the report card.



Some childcare, schools and colleges might be doing very well in some areas and need to work more on other areas.

# Expected standard



The **expected standard** is what we think every childcare provider, school and college should be doing.



We expect a lot for this grade, as it is what every child should be getting.



This will be in green on the report card.

# Strong standard



The **strong standard** is a higher grade than the expected standard.

It means:



- the childcare, school or college has been doing excellent work for a long time



- they are making a real difference to children

# Exceptional



This is the highest grade we give.



We only give this grade when we see childcare, schools and colleges that are some of the best in the country.




These providers will be doing things that others could learn from.

## Needs attention



This grade is a sign that the childcare, school or college has work to do to reach the **expected standard**.

A cartoon illustration of a female teacher with red hair, wearing a green blazer over a white shirt, holding a clipboard. A speech bubble points to her from the left.

**You need to work on...**

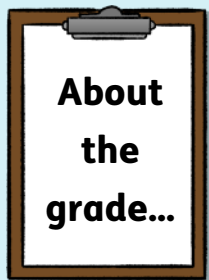
It is not a fail grade, but it shows where work needs to be done.

## Urgent improvement



This grade means there are big problems that need to be dealt with quickly.

# More information



As well as the grades, we will write more detailed information about why we have given each grade.

This will help you understand:



- why we gave that grade



- what it is like to be a child at the childcare provider, school or college



We will also tell you important information about the childcare provider, school or college, for example how many children go there.

We hope the new report cards will give you clear information to help you:



- make choices about your child's future



- know that your child is getting the support they need



You can look up any report for a school or provider on our website here:  
<https://reports.ofsted.gov.uk>



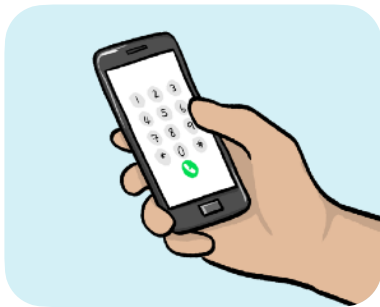
When they get their next inspection, we will publish a report card on their page. Their past inspection reports will then be listed at the end of their page.

# Find out more

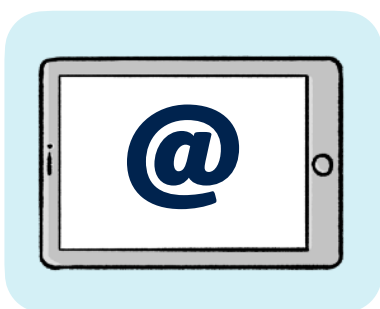


You can look at our website here:  
[ofsted.gov.uk](https://www.ofsted.gov.uk)

You can contact us by:



- phone: 0300 123 1231



- email: [enquiries@ofsted.gov.uk](mailto:enquiries@ofsted.gov.uk)

This Easy Read booklet was produced by [easy-read-online.co.uk](https://www.easy-read-online.co.uk)  
The booklet includes images licensed from Photosymbols & Shutterstock.