

Air Quality and Dust Monitoring Monthly Report – October 2025

Solihull Metropolitan Borough Council



Department for Transport

High Speed Two (HS2) Limited has been tasked by the Department for Transport (DfT) with managing the delivery of a new national high speed rail network. It is a non-departmental public body wholly owned by the DfT.

High Speed Two (HS2) Limited,
Two Snowhill
Snow Hill Queensway
Birmingham B4 6GA

Telephone: 08081 434 434

General email enquiries: HS2enquiries@hs2.org.uk

Website: www.gov.uk/hs2

A report prepared by EWCs and MWCCs on behalf of HS2 Ltd.

High Speed Two (HS2) Limited has actively considered the needs of blind and partially sighted people in accessing this document. The text will be made available in full on the HS2 website. The text may be freely downloaded and translated by individuals or organisations for conversion into other accessible formats. If you have other needs in this regard please contact High Speed Two (HS2) Limited.

© High Speed Two (HS2) Limited, 2025, except where otherwise stated.

Copyright in the typographical arrangement rests with High Speed Two (HS2) Limited.

This information is licensed under the Open Government Licence v3.0. To view this licence, visit www.nationalarchives.gov.uk/doc/open-government-licence/version/3 **OGL** or write to the Information Policy Team, The National Archives, Kew, London TW9 4DU, or e-mail: psi@nationalarchives.gsi.gov.uk. Where we have identified any third-party copyright information you will need to obtain permission from the copyright holders concerned.



Monthly Summary

- 1.1.1 This Summary Report is published in fulfilment of commitments detailed in the High Speed Rail (London-West Midlands) Environmental Minimum Requirements, Annex 1: Code of Construction Practice, for the nominated undertaker to present the results of air quality and dust monitoring undertaken in Solihull Metropolitan Borough Council (SMBC) during October 2025.
- 1.1.2 Figures 1 to Figure 3 in Appendix A present the current worksites together with the dust monitoring locations.
- 1.1.3 This summary should be read in conjunction with the overview monitoring report available monthly from www.gov.uk/government/collections/monitoring-the-environmental-effects-of-hs2, which highlights: the applicable standards and guidance, as well as the air quality and dust monitoring methodologies to be implemented by nominated undertakers throughout construction.
- 1.1.4 The current worksites, as presented in Appendix A, Figure 1 to Figure 3, include:

Sublot 2B2

Waste Lane Overbridge Satellite

- Tunnel works.
- Concrete pours steel fixing hydro demolition.
- Waste lane diversion / utilities works.

Carol Green Rail Underbridge

- Moving traffic and plant machinery.

Sublot 2B3

Balsall Common Viaduct

- Pier works.

Park Lane

- M214 Works.
- M215 technical backfill.
- Construction of access tracks.
- Stabilisation of haul road and placing topsoil.
- A452 realignment works.

A452 Compound

- A452 realignment works.

- Moving traffic.

Sublot 5S

Coleshill Heath Road

- Landscape fill.
- Technical backfill.
- Lime stabilisation of upper embankment.
- Track drainage installation.

Coleshill Heath Road Underbridge

- Excavation backfill.
- North abutment steel fixing.
- Pile cap backfill.

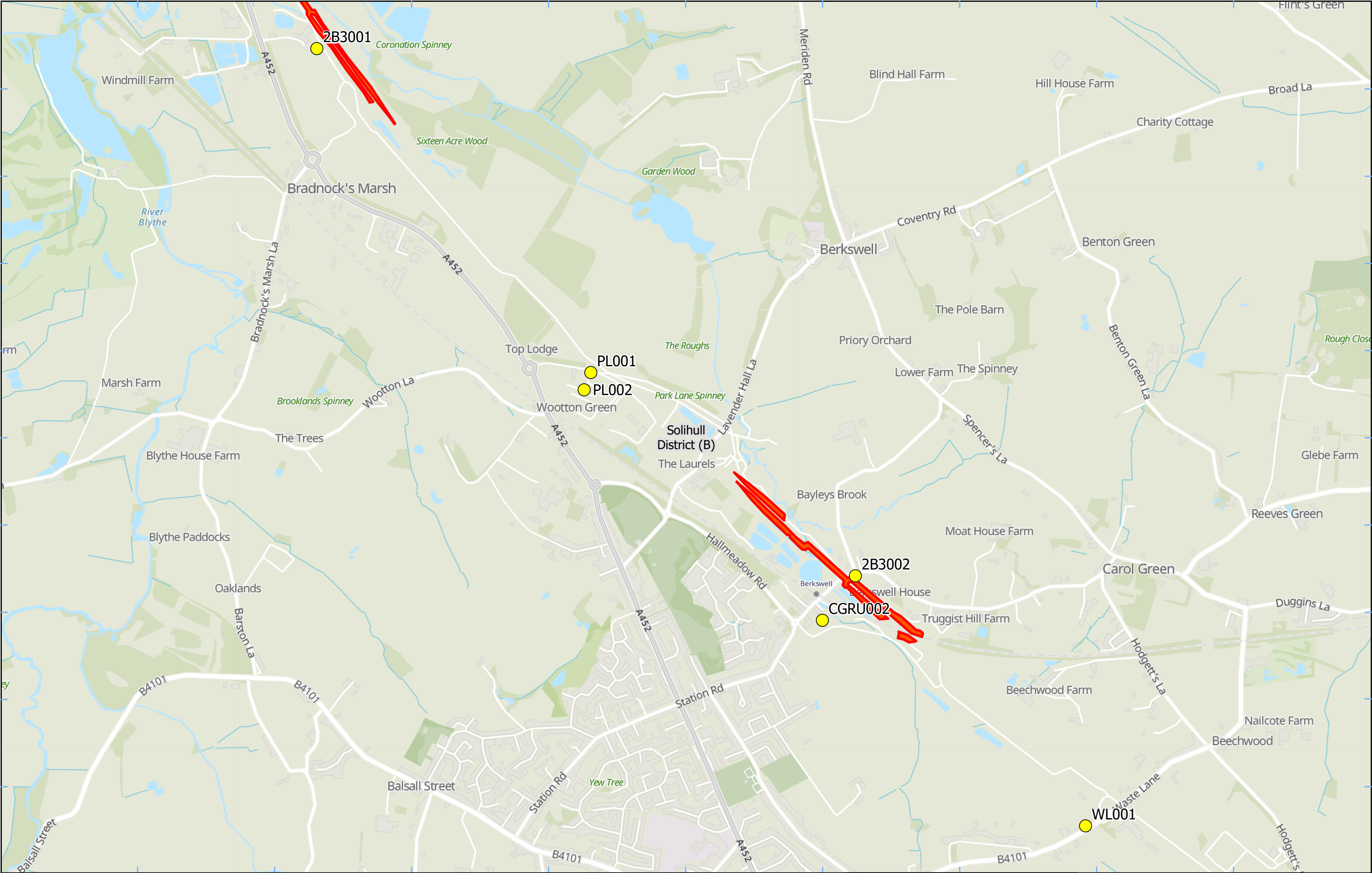
- 1.1.5 Eleven (11) dust monitors are installed around these worksites, where works are underway. These sites returned a medium dust risk rating.
- 1.1.6 Dust monitoring locations and results are presented in Appendix B, Table 1, together with line charts of monthly data from the dust monitors presented in Figure 4. All continuous dust monitoring is undertaken using indicative monitors. Despite being Environment Agency (MCERTS) certified, indicative monitors carry a higher level of uncertainty than reference monitors, and therefore cannot be strictly compared with Air Quality Standards for human health and the environment. The purpose of the monitoring undertaken is to ensure the effectiveness of the on-site mitigation.
- 1.1.7 The trigger level for PM₁₀ concentrations of 190 µg/m³, over a 1-hour period, in accordance with the updated guidance document '*Guidance on Monitoring in the Vicinity of Demolition and Construction Sites – (October 2018)*' has been applied.
- 1.1.8 No (0) dust trigger alerts were recorded during the monitoring period (October 2025).
- 1.1.9 Data capture was below 90% for multiple monitors due to:
- Monitor 2B3001 – A battery refresh took place on 27th October 2025. After the site visit, the issues were resolved.
 - Monitor 2B3002 – A battery refresh took place on 29th October 2025. After the site visit, the issues were resolved.
 - Monitor BBE001 – A battery refresh is scheduled for 14th November 2025.
 - Monitor CGRU002 – A battery refresh is scheduled for 11th November 2025.
 - Monitor PL002 – A battery refresh took place on 10th November 2025.
 - Monitor BIS001 – A battery refresh has been requested.
 - Monitor DLE002 – A monitor swap out is scheduled for 21st November 2025.

- Monitor WL001 – The monitor was installed on 7th October. For the remainder of the month data capture was 100%.

1.1.10 There were no (0) complaints received during this reporting period (October 2025).

Appendix A – Worksites and Monitoring Locations

Figures 1-3: Worksites and Monitoring Locations within SMBC



Legend

 Dust Monitor  District Borough Unitary Boundaries


 Worksite

Service Layer Credits: GB Topographic: Contains OS data © Crown Copyright and database right 2025
Contains data from OS Zoomstack

Map Number

Map Name
**Worksite and Monitoring Locations
In SMBC (Sheet 1)**


Solihull Metropolitan Borough


 HS2 Ltd accept no responsibility for any circumstances, which arise from the reproduction of this map after alteration, amendment or abbreviation or if it is issued in part or issued incomplete in any way.

Registered in England. Registration number 06791686.
Registered office: 2 Snowhill, Queensway,
Birmingham B4 6GA.

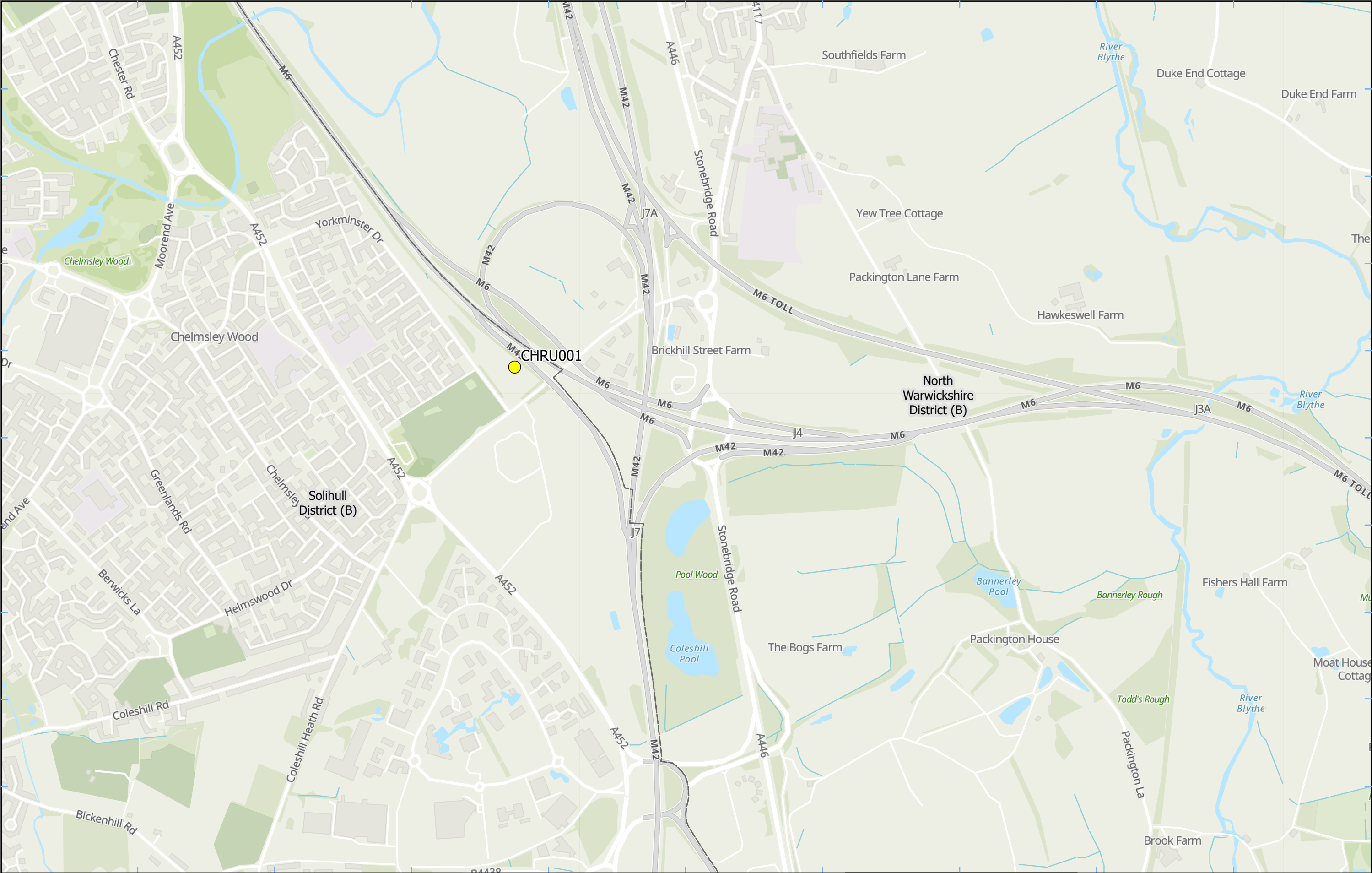
© Crown copyright and database rights 2025.
Ordnance Survey Licence Number 100049190.

Doc Number:

 Scale at A3: 1:15,000

 Metres

Date: 30/09/25



Legend

- Dust Monitor
- District Borough Unitary Boundaries

Service Layer Credits: GB Topographic: Contains OS data © Crown Copyright and database right 2023
Contains data from OS Zoomstack

Map Number

Map Name

**Monitoring Locations
In SMBC (Sheet 2)**

Solihull Metropolitan Borough

Registered in England. Registration number 06791686.
Registered office: 2 Snowhill, Queensway,
Birmingham B4 6GA.

© Crown copyright and database rights 2024.
Ordnance Survey Licence Number 100049190.

Doc Number:

Scale at A3: 1:12,000

Metres

Date: 26/03/24



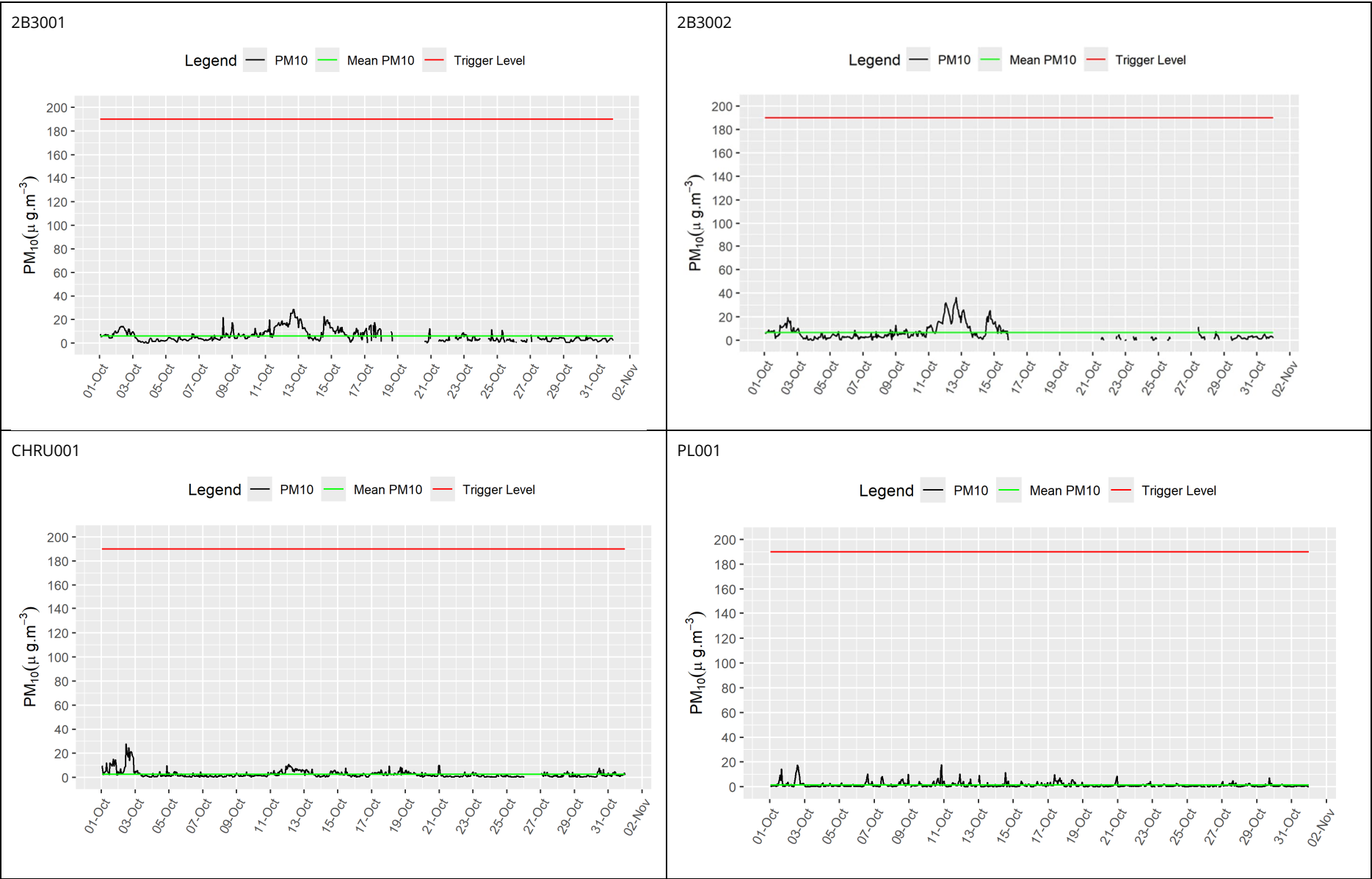
Legend <div><div></div> Dust Monitor</div> <div><div></div> District Borough Unitary Boundaries</div>	Map Number	<div><div>HS2 Ltd accept no responsibility for any circumstances, which arise from the reproduction of this map after alteration, amendment or abbreviation or if it is issued in part or issued incomplete in any way.</div></div> <div><div>Registered in England. Registration number 06791686. Registered office: 2 Snowhill, Queensway, Birmingham B4 6GA.</div><div>© Crown copyright and database rights 2024. Ordnance Survey Licence Number 100049190.</div></div>
	Map Name	
	Service Layer Credits: GB Topographic: Contains OS data © Crown Copyright and database right 2023 Contains data from OS Zoomstack	Solihull Metropolitan Borough

Appendix B – Dust Monitoring Results

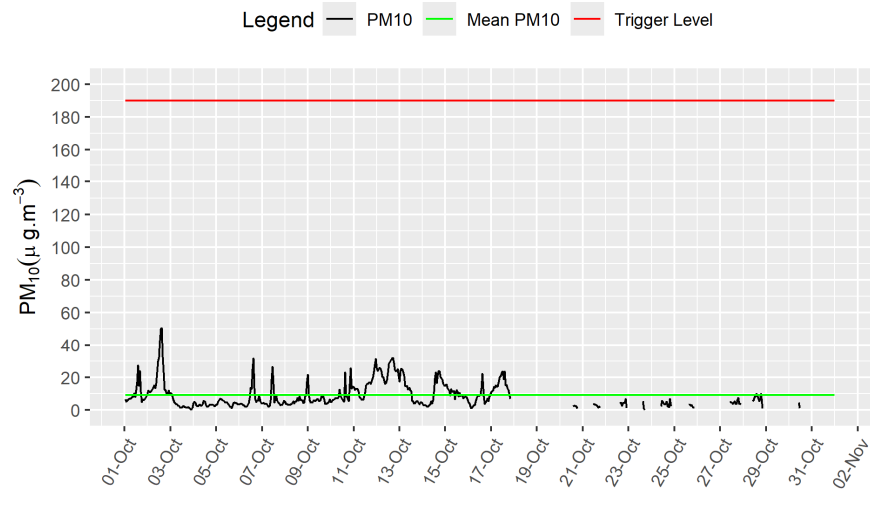
Table 1: Dust Monitoring Locations and Results

Monitoring site ID	Coordinates (X,Y)	Location description	Dust risk rating for site	Monitoring site active during period	Change to site since previous period report	Mean 1-hour PM ₁₀ concentration (µg/m ³)	Minimum 1-hour PM ₁₀ concentration (µg/m ³)	Maximum 1-hour PM ₁₀ concentration (µg/m ³)	Number of 1-hour periods exceeding trigger level of 190 µg/m ³	Data capture Month (%)
2B3001	422322, 280034	Sublot 2B3, at Marsh Farm	M	Yes	No	6.1	0.1	28.6	0	85.8
2B3002	424601, 277729	Sublot 2B3, at Cherry Tree Cottage	M	Yes	No	6.7	0.1	43.3	0	84.4
CHRU001	419300, 286793	Bluebell Drive, Coleshill Heath Road Underbridge	M	Yes	No	2.6	0.1	27.7	0	96.8
PL001	423436, 278557	Park Lane	M	Yes	No	1.4	0.1	17.8	0	99.3
PL002	423481, 278494	Final Home, Park Lane	M	Yes	No	9.0	0.1	50.7	0	64.4
DLE001	421035, 281818	Diddington Lane	M	Yes	No	6.6	0.1	32.1	0	99.9
DLE002	421139, 282222	Hampton Hill Farmhouse	M	Yes	No	-	-	-	-	0.0
BIS001	420284, 283503	Hollywell Brook	M	Yes	No	-	-	-	-	0.0
CGRU002	424516, 277498	Annora House	M	Yes	No	5.9	0.1	32.2	0	87.0

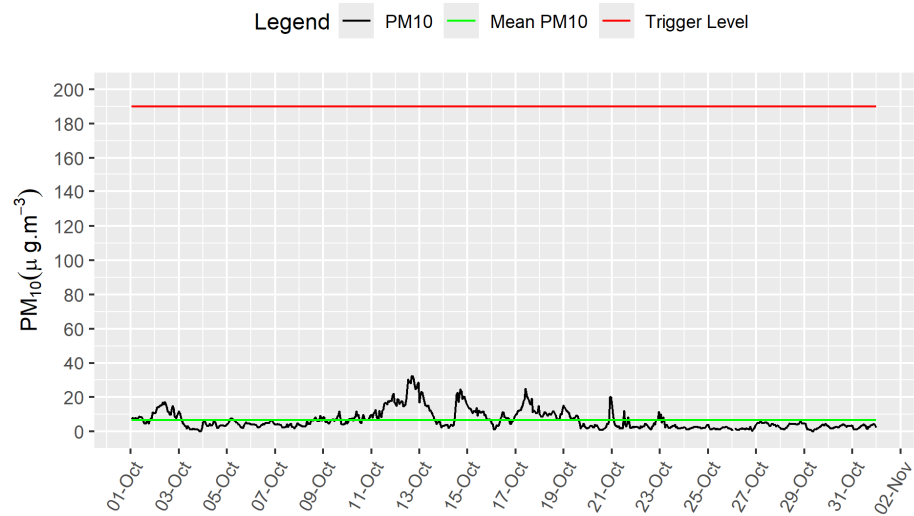
Monitoring site ID	Coordinates (X,Y)	Location description	Dust risk rating for site	Monitoring site active during period	Change to site since previous period report	Mean 1-hour PM ₁₀ concentration (µg/m ³)	Minimum 1-hour PM ₁₀ concentration (µg/m ³)	Maximum 1-hour PM ₁₀ concentration (µg/m ³)	Number of 1-hour periods exceeding trigger level of 190 µg/m ³	Data capture Month (%)
BBE001	421656, 281313	Patrick Farmhouse	M	Yes	No	2.1	0.1	86.1	0	74.2
WL001	425657, 276607	Dragonflies	M	Yes	No	6.1	0.1	39.7	0	78.5



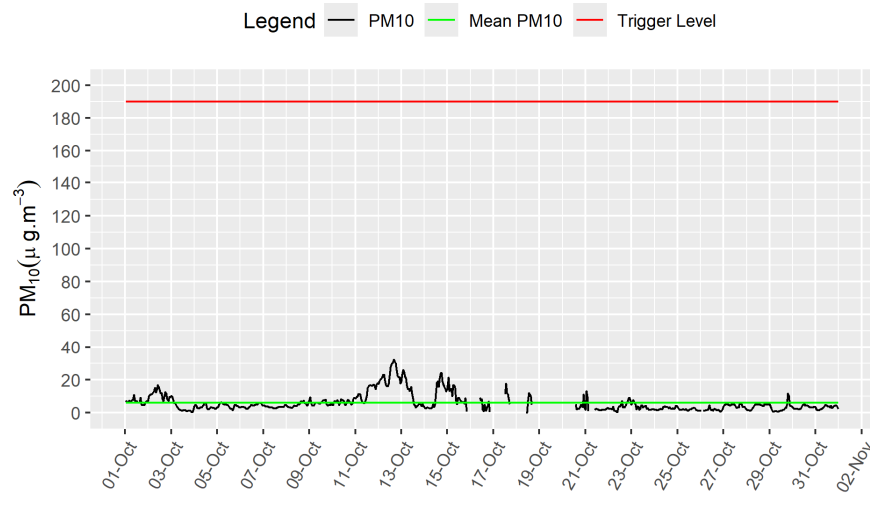
PL002



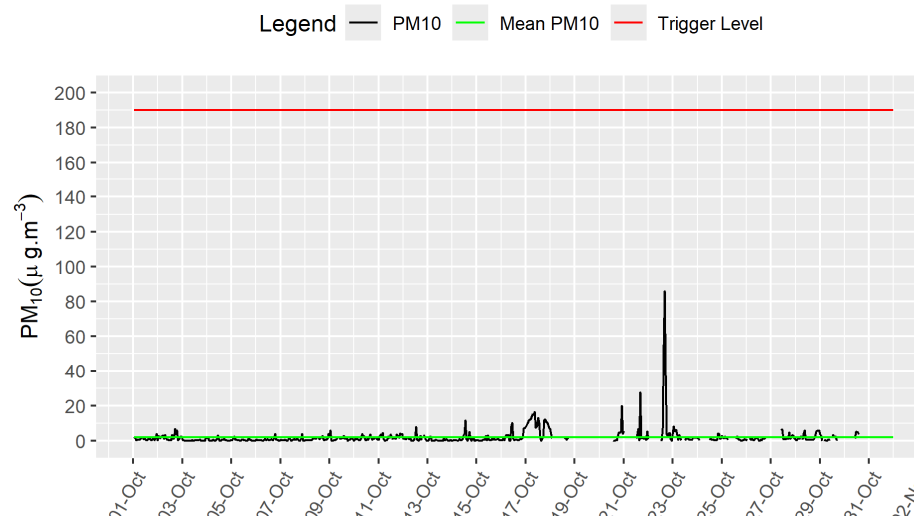
DLE001



CGRU002



BBE001



WL001

