

Air Quality and Dust Monitoring Monthly Report – October 2025

North Warwickshire Borough Council



Department for Transport

High Speed Two (HS2) Limited has been tasked by the Department for Transport (DfT) with managing the delivery of a new national high speed rail network. It is a non-departmental public body wholly owned by the DfT.

High Speed Two (HS2) Limited,
Two Snowhill
Snow Hill Queensway
Birmingham B4 6GA

Telephone: 08081 434 434

General email enquiries: HS2enquiries@hs2.org.uk

Website: www.gov.uk/hs2

A report prepared by EWCs and MWCCs on behalf of HS2 Ltd.

High Speed Two (HS2) Limited has actively considered the needs of blind and partially sighted people in accessing this document. The text will be made available in full on the HS2 website. The text may be freely downloaded and translated by individuals or organisations for conversion into other accessible formats. If you have other needs in this regard please contact High Speed Two (HS2) Limited.

© High Speed Two (HS2) Limited, 2025, except where otherwise stated.

Copyright in the typographical arrangement rests with High Speed Two (HS2) Limited.

This information is licensed under the Open Government Licence v3.0. To view this licence, visit www.nationalarchives.gov.uk/doc/open-government-licence/version/3 **OGL** or write to the Information Policy Team, The National Archives, Kew, London TW9 4DU, or e-mail: psi@nationalarchives.gsi.gov.uk. Where we have identified any third-party copyright information you will need to obtain permission from the copyright holders concerned.



Monthly Summary

- 1.1.1 This Summary Report is published in fulfilment of commitments detailed in the High Speed Rail (London-West Midlands) Environmental Minimum Requirements, Annex 1: Code of Construction Practice, for the nominated undertaker to present the results of air quality and dust monitoring undertaken in North Warwickshire Borough Council (NWBC) during October 2025.
- 1.1.2 Figures 1 and Figure 2 in Appendix A present the current worksites together with the dust monitoring locations.
- 1.1.3 This summary should be read in conjunction with the overview monitoring report monthly available from www.gov.uk/government/collections/monitoring-the-environmental-effects-of-hs2, which highlights: the applicable standards and guidance, as well as the air quality and dust monitoring methodologies to be implemented by nominated undertakers throughout construction.
- 1.1.4 The current worksites, as presented in Figure 1 and Figure 2, include:

Sublot 6BS

Gilson Embankment

- Site is temporarily shut down.

Attleboro Lane Overbridge

- Works are now complete in this area.

Sublot 7

Faraday Avenue Embankment and Underbridge

- No works took place in this area during the monitoring period.

Marston Box

- Delivery of waste concrete for crushing and recycling.

Sublot 6NC

- Dig and replace.
- Stockpile operation.
- Embankment construction.
- Compound operation and haul road maintenance.
- Water Orton culvert installation.
- Operation of material deposit / removal from the borrow pit.
- Haul road operation.

Sublot 5N

Chattle Hill Box Structure

- Site is now shutdown until April 2026.

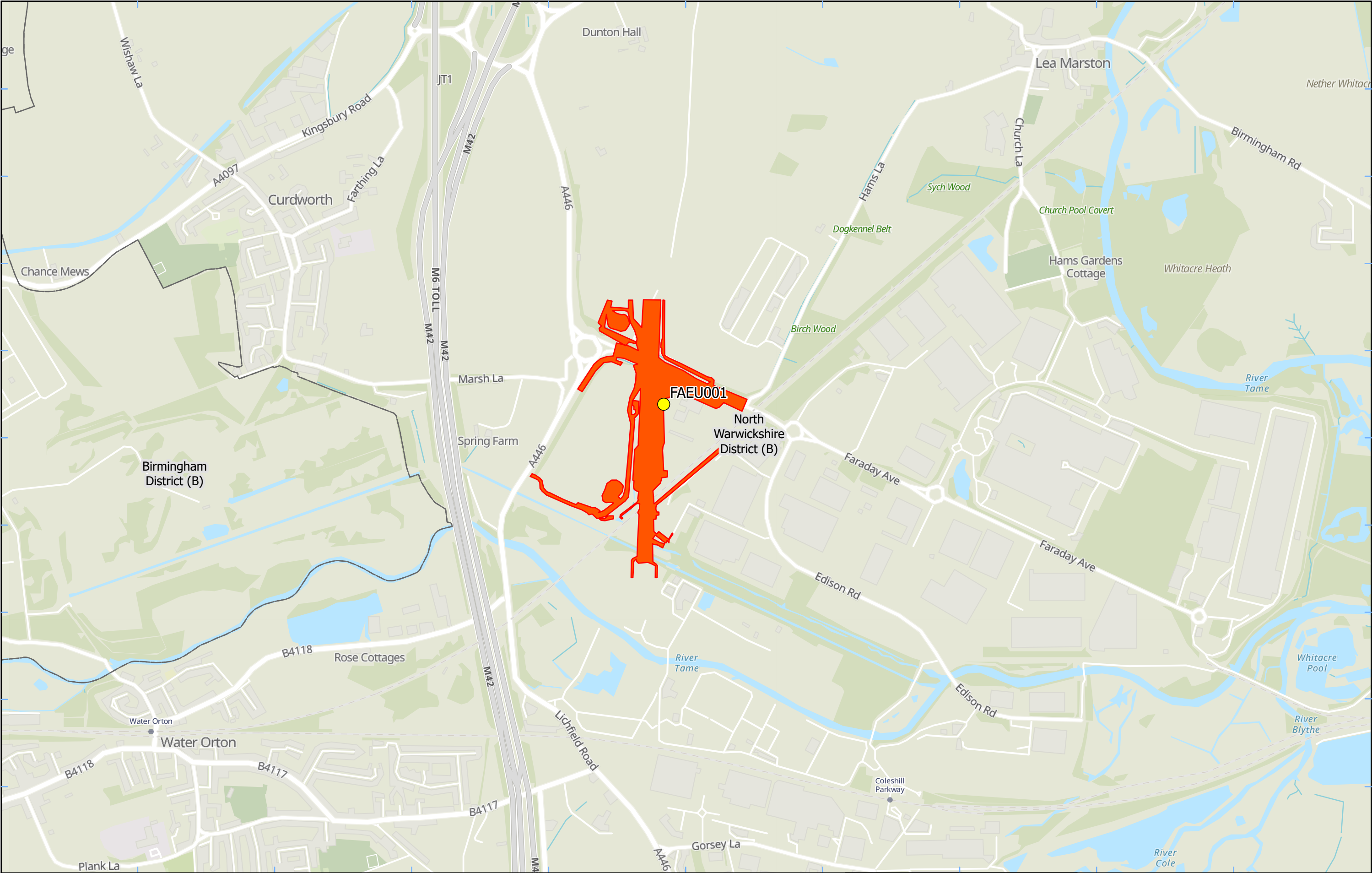
- 1.1.5 Seven (7) dust monitors are installed around these worksites, where works are underway. These sites returned a low to medium dust risk rating.
- 1.1.6 Dust monitoring locations and results are presented in Appendix B, Table 2, together with line charts of monthly data from each dust monitor presented in Figure 3. All continuous dust monitoring is undertaken using indicative monitors. Despite being Environment Agency (MCERTS) certified, indicative monitors carry a higher level of uncertainty than reference monitors, and therefore cannot be strictly compared with Air Quality Standards for human health and the environment. The purpose of the monitoring undertaken is to ensure the effectiveness of the on-site mitigation.
- 1.1.7 The trigger level for PM₁₀ concentrations of 190 µg/m³, over a 1-hour period, in accordance with the updated guidance document '*Guidance on Monitoring in the Vicinity of Demolition and Construction Sites – (October 2018)*' has been applied.
- 1.1.8 No (0) dust trigger alerts were recorded during the monitoring period (October 2025).
- 1.1.9 Data capture was below 90% for multiple monitors due to:
- Monitor FAEU001 – A battery refresh took place on 5th November 2025. After the site visit, the issues were resolved.
 - Monitor AFE001 – The monitor is currently offline. There have been issues with site access, the monitor was moved on 21st October 2025. A monitor swap out for investigation is scheduled for 14th November 2025.
- 1.1.10 Table 1 provides a summary of the complaint information relating to dust or air quality received during the reporting period, together with the findings of any related investigations.

Table 1: Summary of complaints received during October 2025

Complaint Reference No.	Worksite Reference	Description of complaint	Results of investigation
HS2-25-46769-C	N/A	Persistent fishy odour in the air.	The odour is due to a combination of treatments used to process and improve excavated material. This is then stabilised and improved by mixing lime through it so that it can be stored and then re-used in other locations on the HS2 project. This is a common technique in construction. The odour is harmless and weather conditions carried the odour to local neighbourhoods. Resident has been updated.
HS2-25-127122-E-C	N/A	Fishy smell in the area.	The odour is due to a combination of treatments used to process and improve excavated material. This is then stabilised and improved by mixing lime through it so that it can be stored and then re-used in other locations on the HS2 project. This is a common technique in construction. The odour is harmless and weather conditions carried the odour to local neighbourhoods. Resident has been updated.

Appendix A – Worksites and Monitoring Locations

Figures 1 and 2: Worksites and Monitoring Locations within NWBC



Legend

- Dust Monitor
- Worksite
- District Borough Unitary Boundaries

Service Layer Credits: GB Topographic: Contains OS data © Crown Copyright and database right 2023
Contains data from OS Zoomstack

Map Number

Map Name

**Worksite and Monitoring Locations
In NWBC (Sheet 1)**

North Warwickshire Borough

Registered in England. Registration number 06791686.
Registered office: 2 Snowhill, Queensway,
Birmingham B4 6GA.

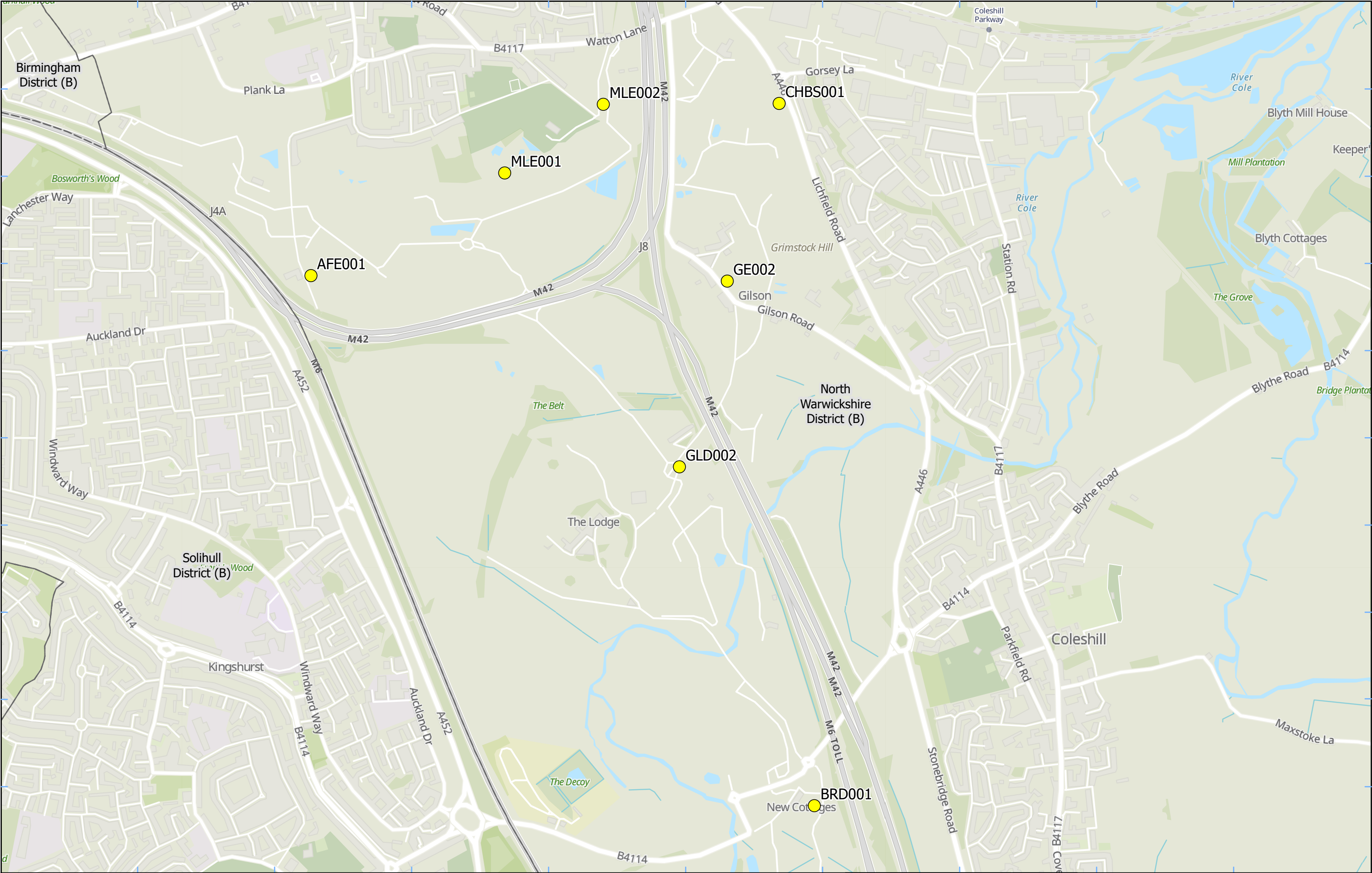
© Crown copyright and database rights 2024.
Ordnance Survey Licence Number 100049190.

Doc Number:


Scale at A3: 1:11,000


Metres

Date: 19/12/24




Legend

 Dust Monitor

 District Borough Unitary Boundaries

Service Layer Credits: GB Topographic: Contains OS data © Crown Copyright and database right 2025
Contains data from OS Zoomstack


Map Number
Map Name
Monitoring Locations In NWBC (Sheet 2)
North Warwickshire Borough



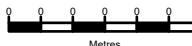
Registered in England. Registration number 06791686.
Registered office: 2 Snowhill, Queensway,
Birmingham B4 6GA.

© Crown copyright and database rights 2025.
Ordnance Survey Licence Number 100049190.

Doc Number:



Scale at A3: 1:12,000



Metres

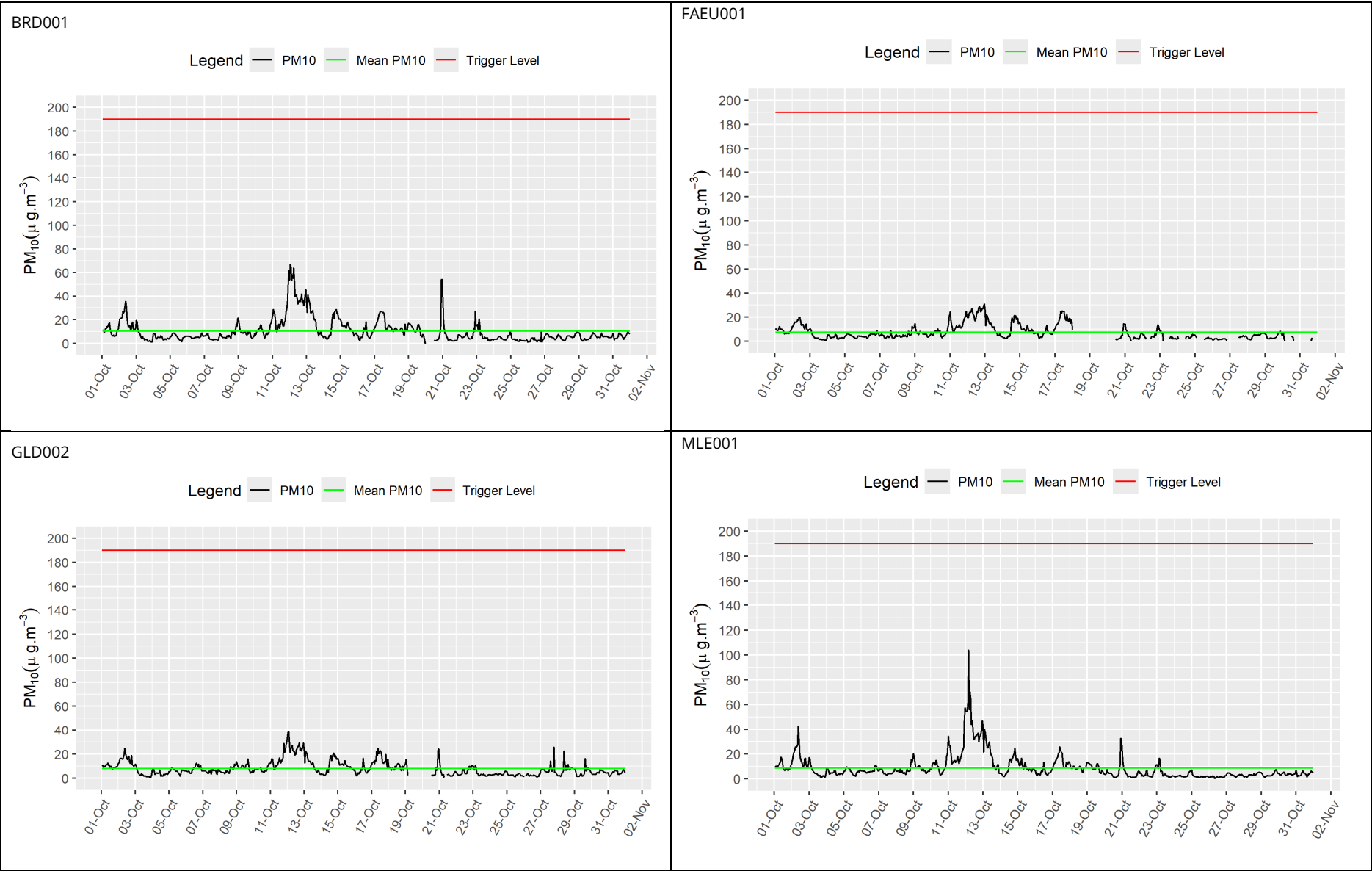
Date: 30/09/25

Appendix B – Dust Monitoring Results

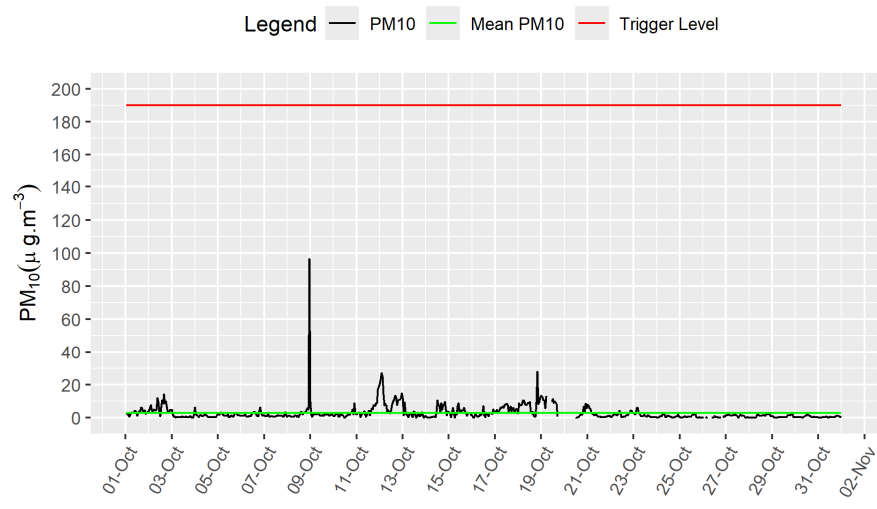
Table 1: Dust Monitoring Locations and Results

Monitoring site ID	Coordinates (X,Y)	Location description	Dust risk rating for site	Monitoring site active during period	Change to site since previous period report	Mean 1-hour PM ₁₀ concentration (µg/m ³)	Minimum 1-hour PM ₁₀ concentration (µg/m ³)	Maximum 1-hour PM ₁₀ concentration (µg/m ³)	Number of 1- hour periods exceeding trigger level of 190 µg/m ³	Data capture (%)
BRD001	419262, 288328	New Cottage, Birmingham Road, Coleshill	L	Yes	No	10.2	0.4	67.1	0	99.2
FAEU001	419164, 292273	Faraday Avenue Embankment and Underbridge, at Orchard Cottage	L	Yes	No	7.5	0.1	30.6	0	80.8
GLD002	418811, 289490	Gilson Drive	L	Yes	Yes	8.0	0.1	38.4	0	95.2
MLE001	418205, 290509	Vicarage Lane	L	Yes	No	8.7	0.4	104.0	0	100.0
AFE001	417455, 290269	Attleboro Farm, Attleboro Lane	L	Yes	No	-	-	-	-	-
GE002	418886, 290192	Lovegrove Cottage, Gilson Road	M	Yes	No	11.1	1.3	73.5	0	100.0
CHBS001	419155, 290755	6 Gorsey Way, Lichfield Road	L	Yes	No	6.7	0.1	37.0	0	96.6
MLE002	418547, 290747	Rugby Club	L	Yes	Yes	2.8	0.1	96.5	0	96.6

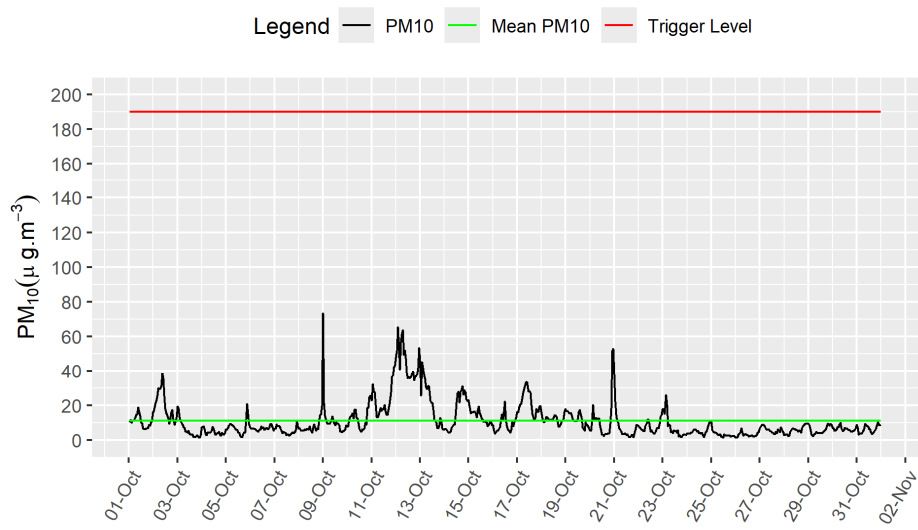
Figure 3: Construction dust 1-hour mean indicative PM₁₀ concentration for all dust monitors



MLE002



GE002



CHBS001

