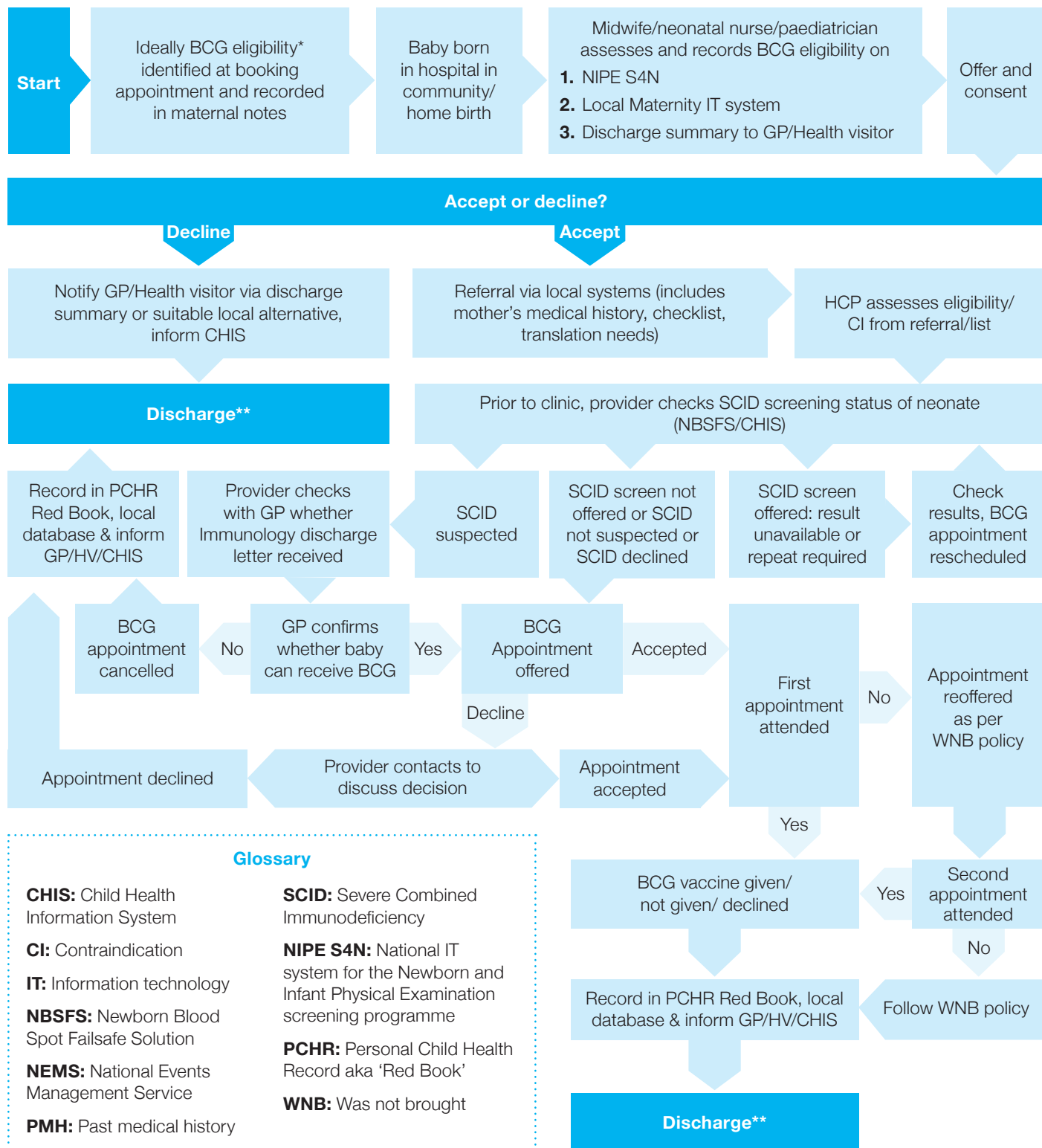




# BCG Patient Flowchart



## Glossary

**CHIS:** Child Health Information System

**CI:** Contraindication

**IT:** Information technology

**NBSFS:** Newborn Blood Spot Failsafe Solution

**NEMS:** National Events Management Service

**PMH:** Past medical history

**SCID:** Severe Combined Immunodeficiency

**NIPE S4N:** National IT system for the Newborn and Infant Physical Examination screening programme

**PCHR:** Personal Child Health Record aka 'Red Book'

**WNB:** Was not brought

Where the SCID evaluation result indicates SCID is NOT suspected, eligible babies should be offered the BCG vaccine within 28 days of birth. Vaccination may be administered earlier than 28 days provided that an appropriate SCID outcome is available.

\*BCG eligibility is described in chapter 32 of the Green Book. [www.gov.uk/government/publications/tuberculosis-the-green-book-chapter-32](http://www.gov.uk/government/publications/tuberculosis-the-green-book-chapter-32).

\*\*Follow local discharge policies