

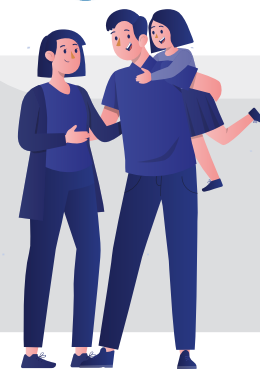


Funded by  
UK Government



## Returning to Nigeria

 Information Leaflet - English



### WHAT ASSISTANCE IS PROVIDED?

#### Pre-Departure Information:

- Returning individuals can contact IRARA to discuss reintegration options in Nigeria.

#### Short-Term Assistance:

- Airport Reception (upon request).
- Accommodation for up to five nights.
- Transportation to an address in-country.
- Care & food provision packs.
- Small cash assistance for immediate needs.

#### Medium-Term Assistance:

- Assistance with finding and reuniting with family.
- Support with in-country documentation.
- Signposting to local services.
- Mental wellbeing and counselling (if required).

#### Long-Term Assistance:

Access to a Returnee Education and Entrepreneurship Fund for:

- Support with accessing the local job market.
- Support with setting up a business.
- Support with accessing vocational training or further education.
- Assistance with legal migration opportunities.

#### Who can get support?

If you are a Nigerian national who has returned, or will be returned from the United Kingdom, IRARA can help you rebuild your life in Nigeria. This support is available for up to 12 months following your return to Nigeria.



#### How to access support?

If you are currently in the UK, contact the UK IRARA office using the details below.

If you have already returned to Nigeria, please contact the IRARA office in Edo State using the details below.

#### About the Programme:

The Home Office Returns Reintegration Programme assists the return and reintegration of people in the United Kingdom with no legal status or right to remain. The programme offers a wide range of services, providing assistance on arrival and longer-term support for persons returning to Nigeria.

#### About IRARA:


IRARA provides reintegration services across Nigeria, assisting hundreds of individuals through sustainable development and social inclusion. The organisation delivers reintegration programmes nationwide. Experienced counsellors provide personalised advice and support, ensuring that reintegration is tailored to each individual's specific needs.

### Contact information in Nigeria:


 **ADIS:** 124, Airport Ogba Road, Benin city, Edo State, Nigeria


**ADIS Opening Hours:** Mon to Fri 8:30am to 5pm

 **Email:** [reintegration@irara.org](mailto:reintegration@irara.org)

 **Tel:** +2348080777067

 **IRARA in the UK Office Hours:** 8:30am - 5pm Monday - Friday

 **Tel:** +44 (0)1433 627 247

 **Email:** [reintegration@irara.org](mailto:reintegration@irara.org)



SCAN ME



V2

[www.irara.org](http://www.irara.org)