



Department  
for Transport

# **Rental E-Scooter Trials Monitoring Data, January 2022 to May 2024**

## Summary Report

September 2025

Department for Transport  
Great Minster House  
33 Horseferry Road  
London  
SW1P 4DR



© Crown copyright 2025

This publication is licensed under the terms of the Open Government Licence v3.0 except where otherwise stated. To view this licence, visit <https://www.nationalarchives.gov.uk/doc/open-government-licence/version/3/> or contact, The National Archives at [www.nationalarchives.gov.uk/contact-us](http://www.nationalarchives.gov.uk/contact-us).

Where we have identified any third-party copyright information you will need to obtain permission from the copyright holders concerned.

This publication is also available on our website at [www.gov.uk/government/organisations/department-for-transport](http://www.gov.uk/government/organisations/department-for-transport)

Any enquiries regarding this publication should be sent to us at [www.gov.uk/government/organisations/department-for-transport](http://www.gov.uk/government/organisations/department-for-transport)

# Contents

Contents	3
Background	4
Headline figures	4
E-Scooter trips	5
E-Scooter availability	7
E-Scooter utilisation	8
Trips by operator	9

## Background

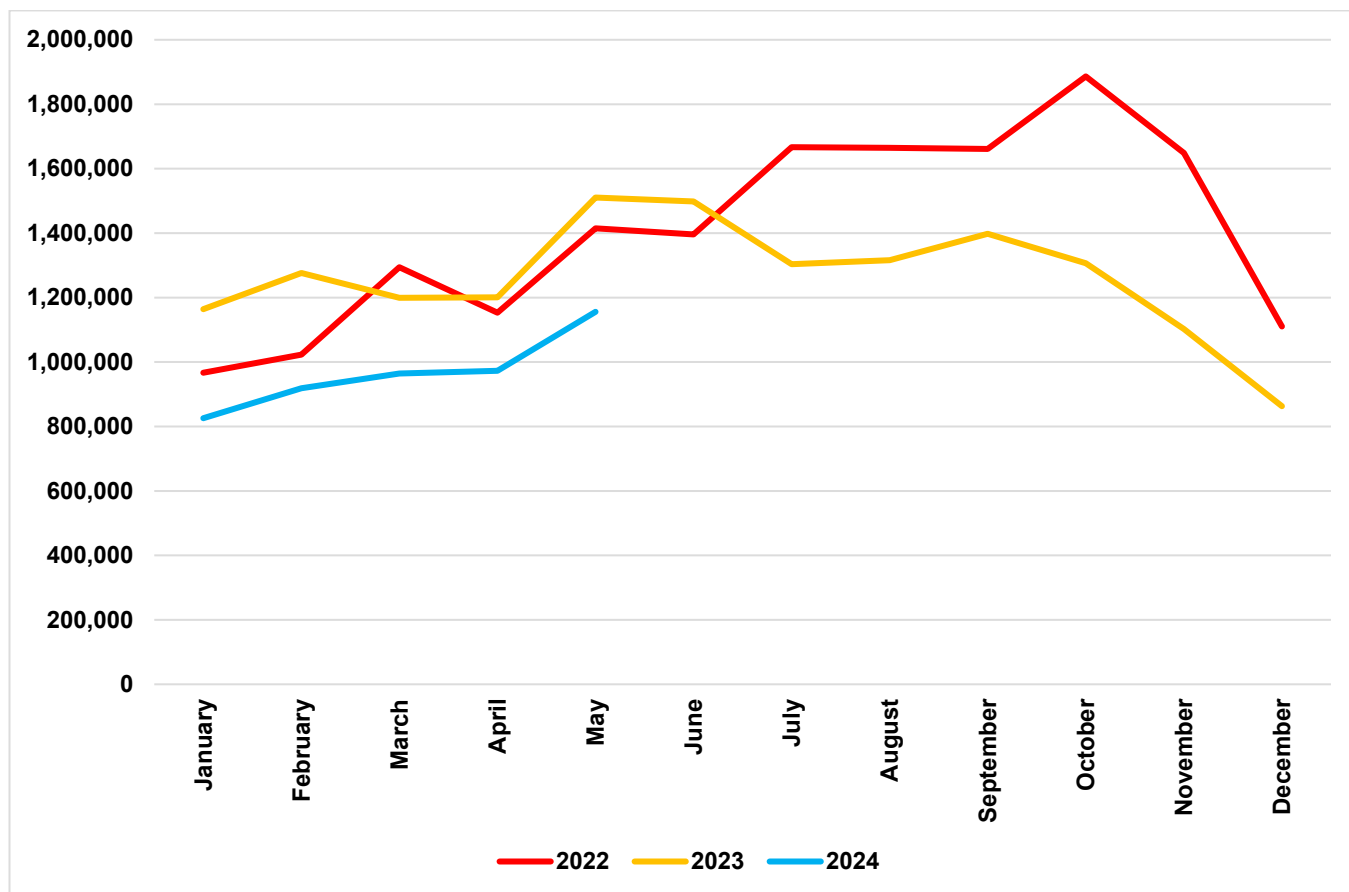
1. [E-scooter rental trials](#) began in July 2020 and are due to run until 31 May 2028.
2. The Department for Transport has been collecting vehicle trip data throughout. In 2022, the Department for Transport published a [national evaluation of rental e-scooter trials](#) which included vehicle trip data covering the period from July 2020 to December 2021.
3. This publication covers rental e-scooter vehicle trip data from January 2022 to May 2024 **excluding the London trial managed by Transport for London (TfL)**. Rental e-scooter trip data for the London trial can be found on the [TfL website](#). A technical note has been published alongside this report, which outlines the methodology taken for this data publication, including any data limitations.

## Headline figures

4. From January 2022 to May 2024, there were 36.9 million trips across 30 trial areas with nearly 19,500 e-scooters available to hire on average each day. The average e-scooter trip across all trial areas lasted 10.9 minutes and travelled 2.1 kilometres, with each e-scooter being used 2.2 times a day on average.
5. The average duration and distance of e-scooter trips varied between trial areas. The average duration ranged between 8.5 minutes in Newcastle and 30.4 minutes in Bournemouth, while the average distance varied from 0.7 kilometres in Rochdale to 3.1 kilometres in Bournemouth.

## E-Scooter trips

**Chart 1: total number of e-scooter trips across all trial areas<sup>1</sup>, by month, January 2022 to May 2024**

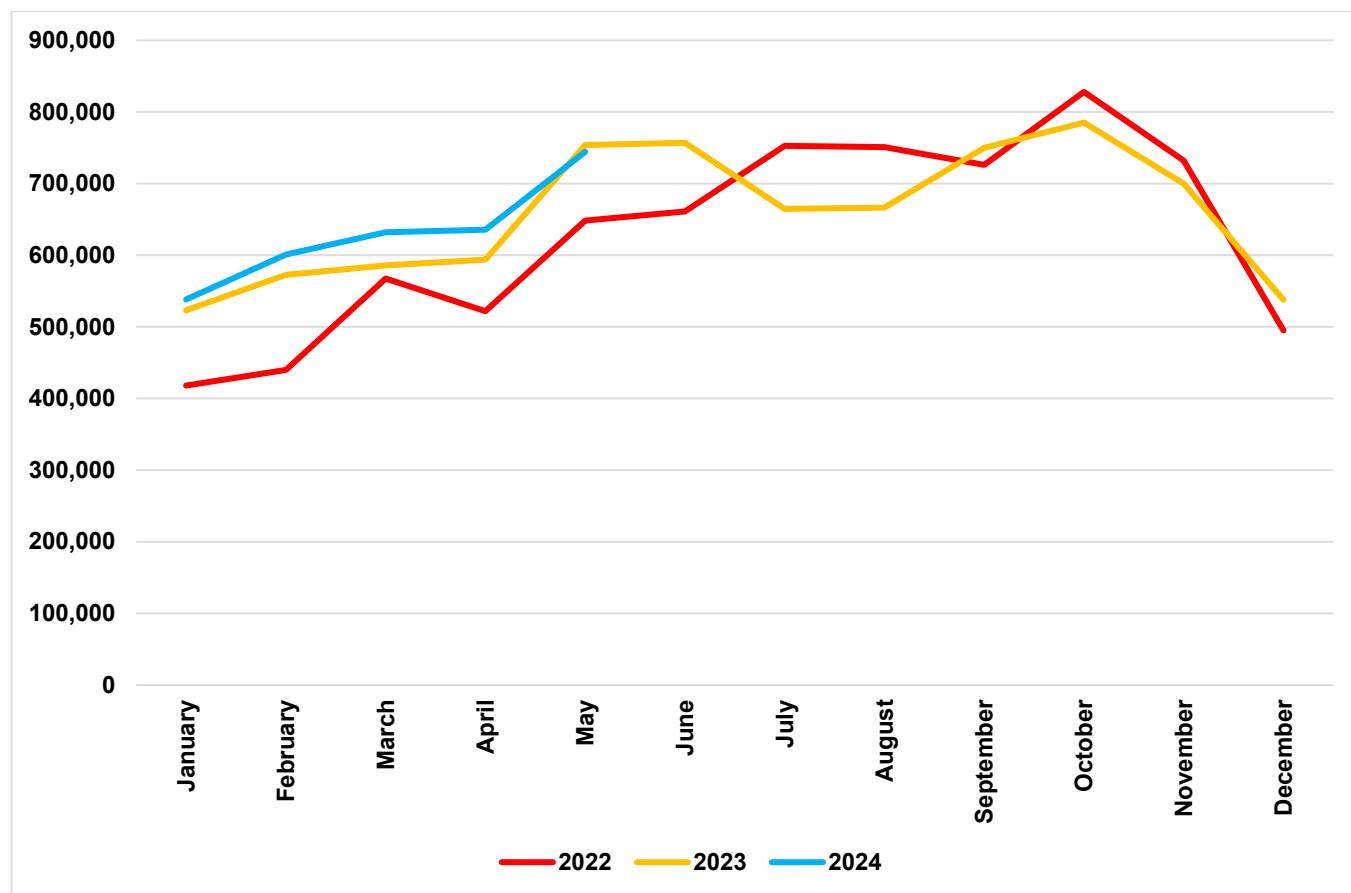


6. Chart 1 shows:

- 6.1 there has been a downward trend in total trip numbers during the publication period. There were 16.9 million trips in 2022, 15.1 million trips in 2023 and 4.8 million trips from January to May 2024, 24% lower than the same period in 2023.

<sup>1</sup> As outlined earlier, all trial areas operating from January 2022 to May 2024 are included in this publication except for London.

**Chart 2: total number of e-scooter trips for trial areas operating throughout January 2022 to May 2024 and with the same operator (n=14, see list of trials<sup>2</sup>)**



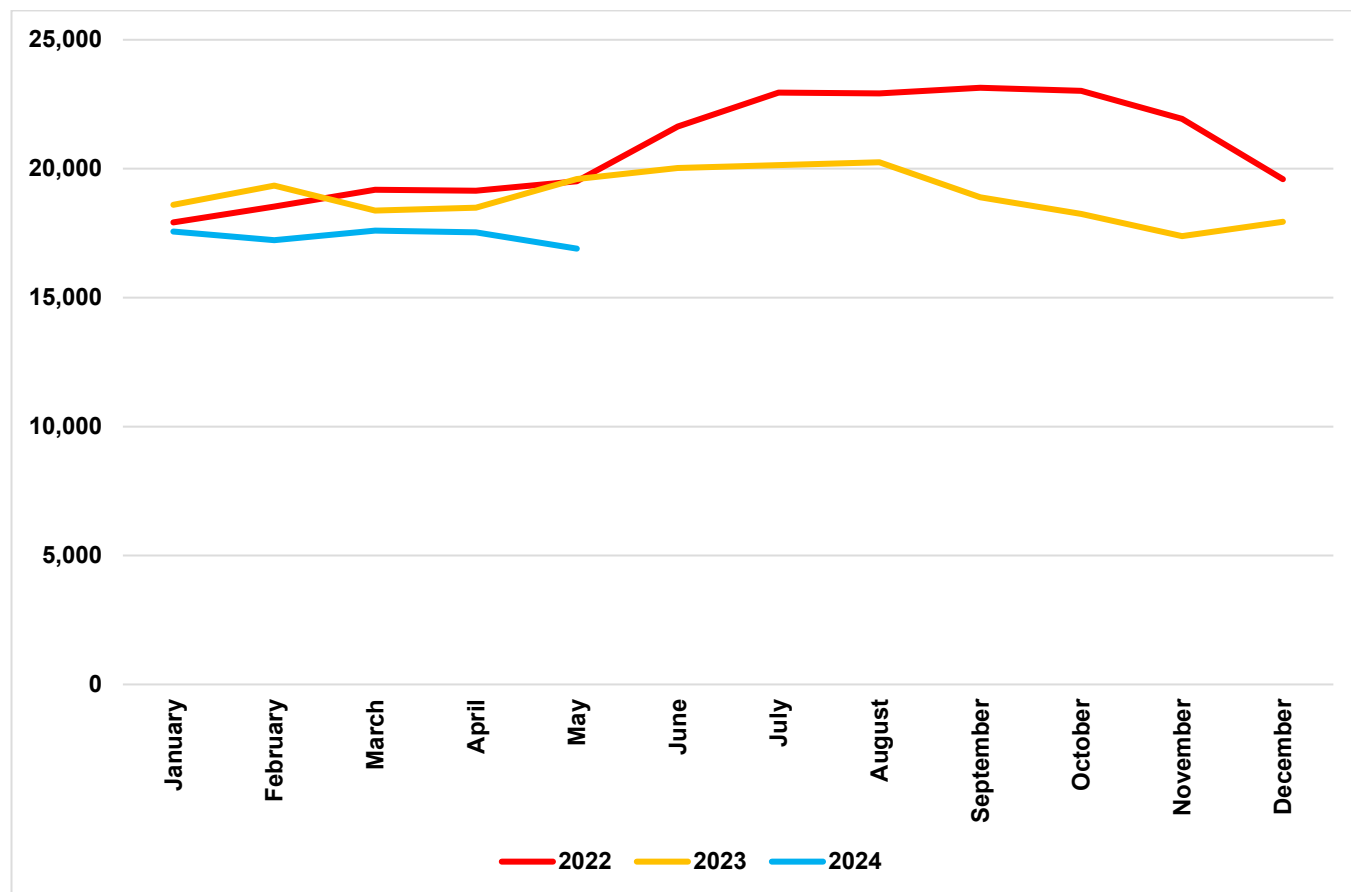
7. Chart 2 shows:

- 7.1 when considering trial areas operating throughout the publication period and with the same operator, there were 3.2 million trips between January 2024 and May 2024. This is 4% higher (3.0 million trips) than the same period in 2023 and 21% higher (2.6 million trips) than the same period in 2022.
- 7.2 there is seasonality in the demand for rental e-scooters. In 2022, there were 44% more trips in the summer and autumn months (June to November) compared to the spring and winter months (December to May). This trend is also observable to a lesser extent in 2023, where 21% more trips took place in the summer and autumn months relative to spring and winter months.

<sup>2</sup> These trials are: Bournemouth (Beryl), Buckinghamshire (Zipp), Cambridgeshire and Peterborough (Voi), City of York (Tier), Solent (Beryl and Voi), Liverpool (Voi), Milton Keynes (Lime only), Newcastle (Neuron), Norfolk (Beryl), North Northamptonshire (Voi), Oxfordshire (Voi), Salford (Lime), Somerset West and Taunton (Zipp) and South Somerset (Zwings)

## E-Scooter availability

**Chart 3: average number of daily e-scooters available across all trial areas<sup>3</sup>, by month, January 2022 to May 2024**



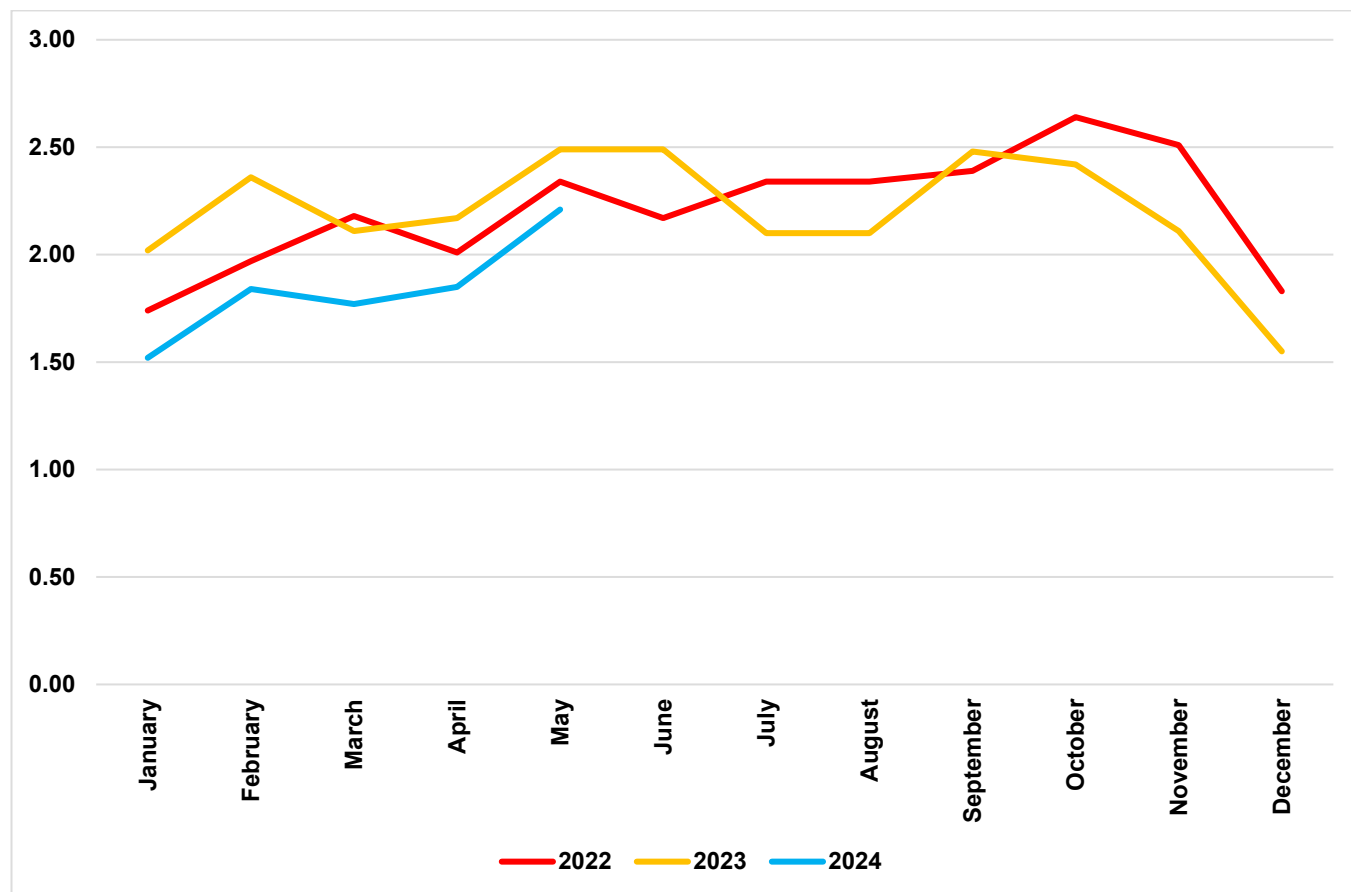
8. Chart 3 shows:

- 8.1 there were between 16,901 and 23,139 daily e-scooters available on average each month across all trial areas during the publication period.
- 8.2 e-scooter availability peaked in September 2022 when 23,139 e-scooters were available to hire across England on average each day.

<sup>3</sup> All trial areas operating from January 2022 to May 2024 are included except for London.

## E-Scooter utilisation

**Chart 4: utilisation rate (average number of daily trips per e-scooter) across all trial areas<sup>4</sup>, by month, January 2022 to May 2024**



9. Chart 4 shows:

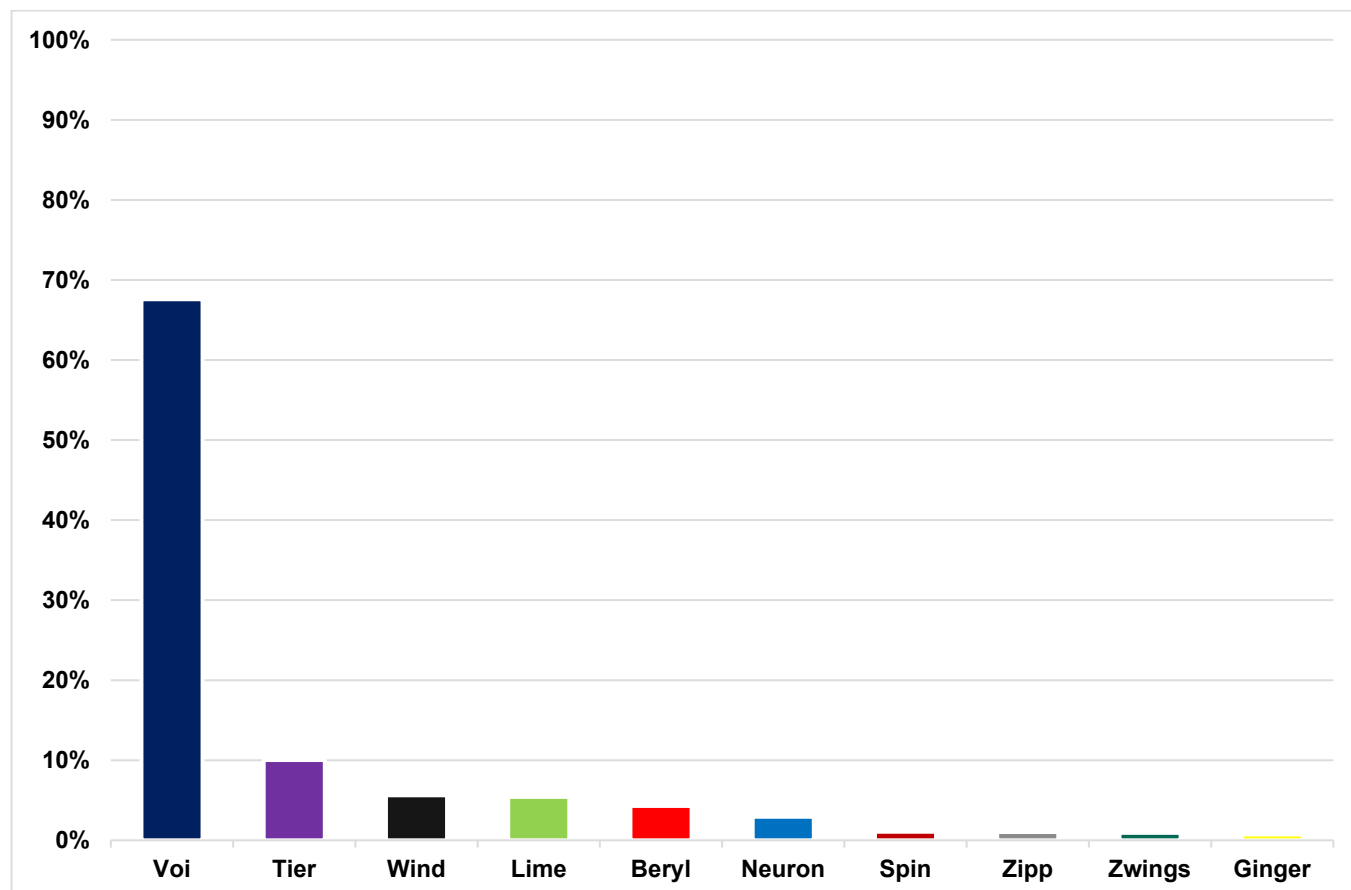
- 9.1 the utilisation rate fluctuates over the publication period between 1.5 and 2.7 trips per e-scooter each day and tends to be highest in autumn months (September to November) and lowest in winter months (December to February).
- 9.2 the utilisation rate in January to May 2024 is slightly lower compared to same period in previous years.

<sup>4</sup> All trial areas operating from January 2022 to May 2024 are included except for London.



## Trips by operator

Chart 5: share of trips, by operator, January 2022 to May 2024<sup>5</sup>



10. Chart 5 shows:

- 10.1 Voi had the largest proportion of trips (68%) across January 2022 to May 2024. The operators with the next largest proportion of trips were Tier (10%) and Wind (6%).

<sup>5</sup> All trial areas operating from January 2022 to May 2024 are included except for London.