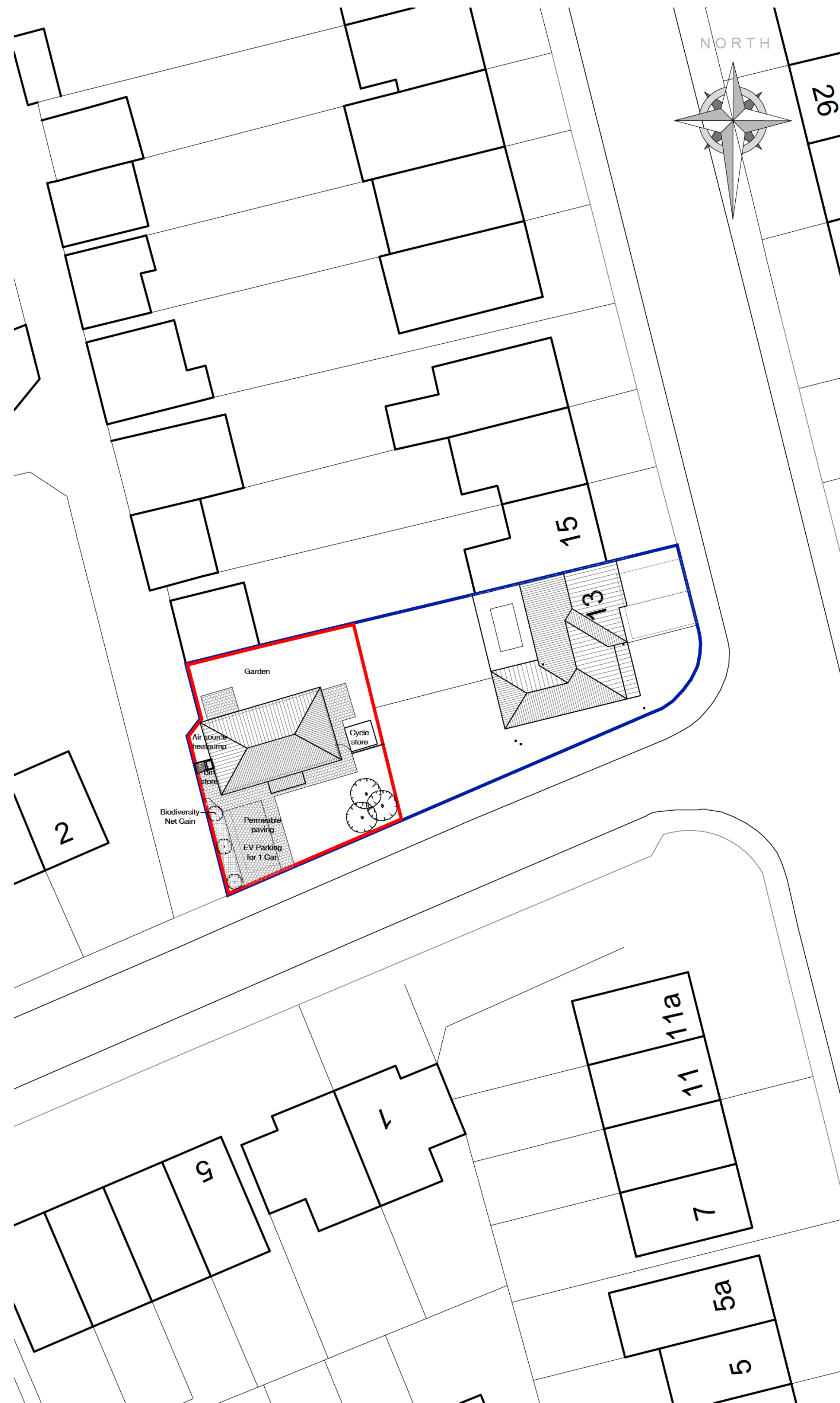


Existing Block Plan

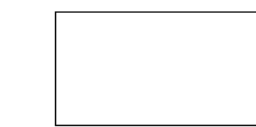


Proposed Block Plan

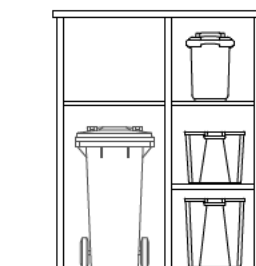
Treated softwood, tongue and groove effect boards with internal treated timber frame. Bin store for:

- 1No 29ltr organic waste bin,
- 1No 90ltr Cardboard sack,
- 2No kerbside recycling bins, 44 ltr & 55ltr.
- 140ltr wheeled bin.

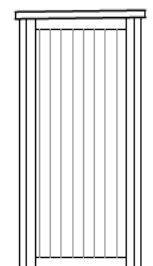
Open front for access with roofing felt finish to top



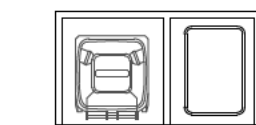
Roof Plan



Front elevation

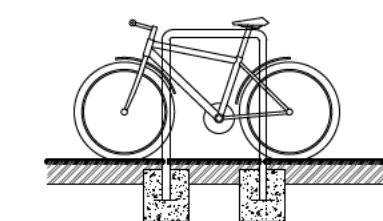
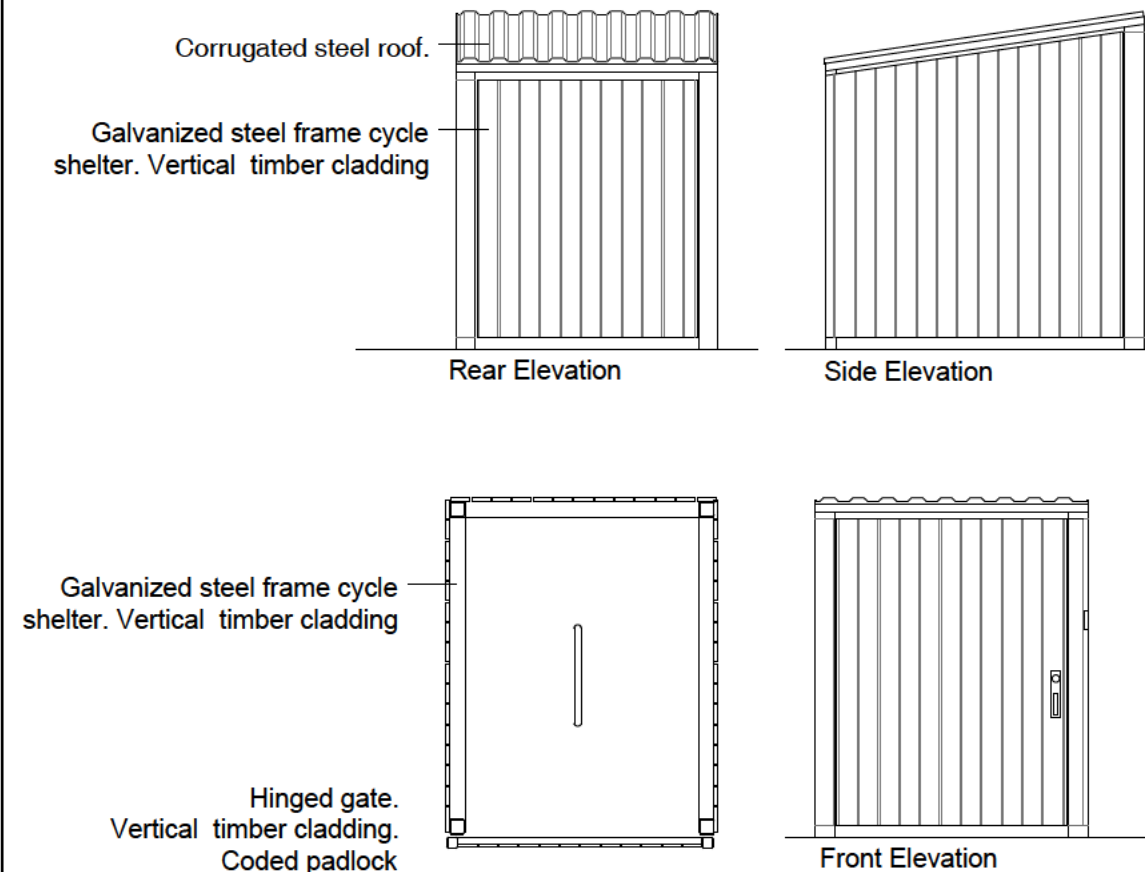


Side Elevation



Plan

Bin Store
Scale 1:50

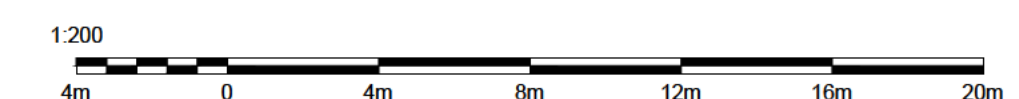
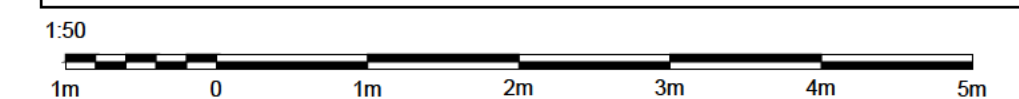


Galvanized Sheffield cycle storage for 2 bicycles fixed to concrete floor.

Concrete base 350x350x300mm

Bike Store

Scale 1:50



PROJECT:

Land to rear of
13 Risdale Rd

TITLE:

Existing & Proposed
Block Plans

SCALE:

1:200@A1

DATE:

Sept 2024

DRAWN BY:

ams

DRAWING NUMBER:

4306.PL.02

REVISION:

E