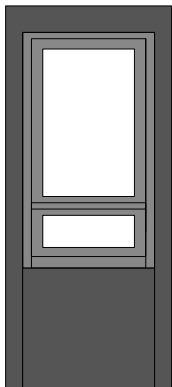
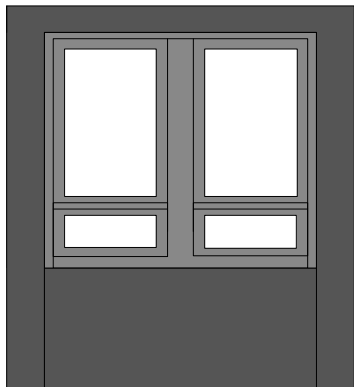


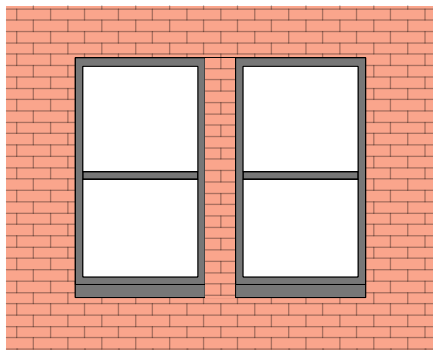
Window Types



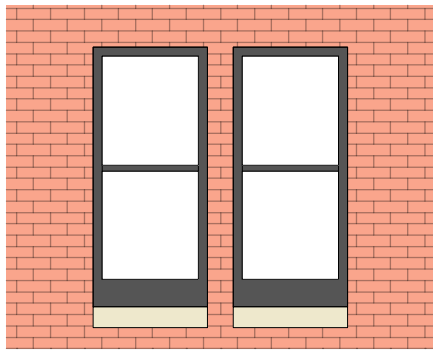
01. Single casement
Dormer window
(East Elevation)



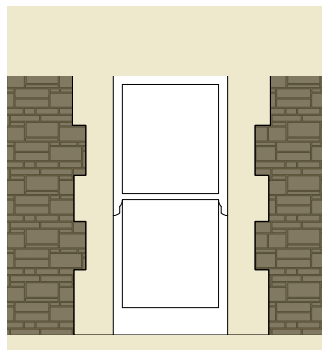
02. Dual casement Dormer
window (East Elevation)



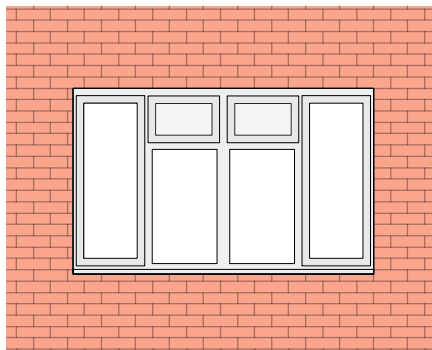
03. Casement windows in Anthracite
grey (South, East and courtyard
elevations)



04. Casement windows in Anthracite
grey (South, East and courtyard
elevations)

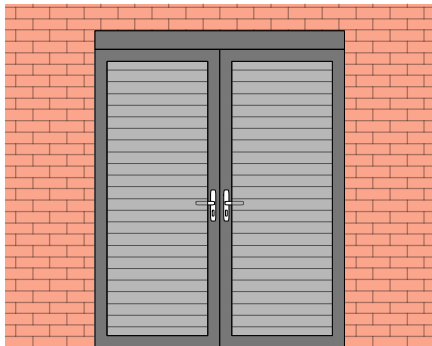


05. Replacement double
glazed sash windows
painted white. (South and
West Elevations)

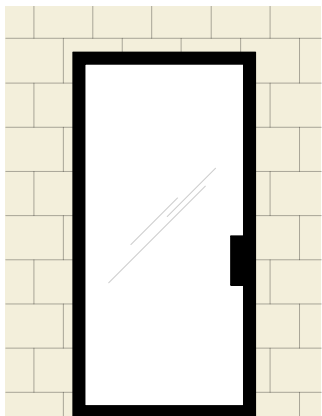


06. Replacement upvc
casement windows to east
elevation

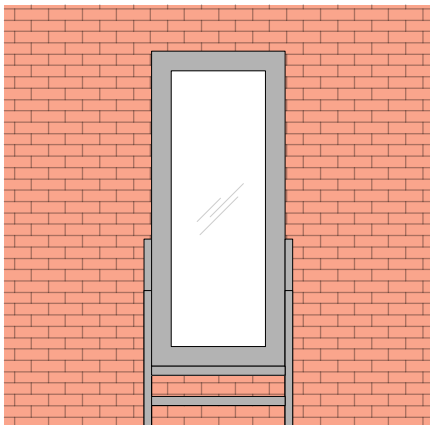
Door Types



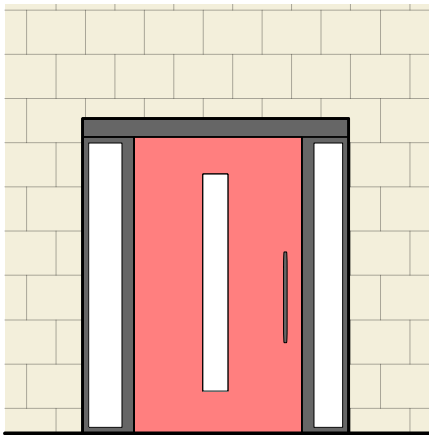
07. Secure louvred metal
door in anthracite grey to
bin store. (South
Elevation)



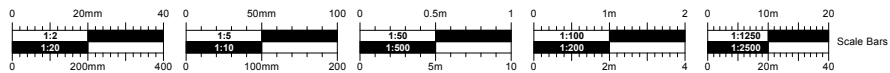
08. Full glazed ppc black
metal commercial entrance
door. (West Elevation)



09. Full glazed painted
timber fire exit door. (East
Elevation)



10. Main entrance to residential
flats on west elevation to be
partially glazed secure door with
full height side vision panels.



PROPOSED WINDOWS AND DOORS
PLANNING

No.	Date	Dr/Ch	Revision Notes	<div><div>Project Title</div><div>286-292 Wells Road. Bristol</div><div>Project Client</div><div>Empyrean Properties Limited</div><div>Suitability</div><div>Code - Description</div><div>A2 APPROVED FOR PLANNING STAGE</div></div>	<div><div>Sheet Scale:</div><div>1:50@A3</div><div>Date:</div><div>16/06/2025</div><div>Drawn By:</div><div>LW</div><div>Reviewed By:</div><div>HH</div></div> <div><div>Copyright. Check all dimensions on site. .</div><div>This drawing is only to be used on the site for which designed.</div></div>	<div><div>Sheet No.</div><div>Project ID - Originator - Volume - Level - Type - Role - Number</div><div>2119 - CMS-XX-XX-DR-A-PL29</div><div>Sheet Title</div><div>Proposed Typical windows and doors</div><div>26 Martingate, Corsham, Wiltshire, SN13 0HL, Web: www.cms-group.co, Tel: 01249 701333</div></div>	<div><div>Rev</div><div>P4</div></div>	<div><div>CMS</div><div>Architects</div></div>
-----	------	-------	----------------	--	---	---	--	--