



UK Government

Chemical Weapons Convention guidance notes

Annual past electronic declaration for
Schedule 3 chemicals

March 2025



© Crown copyright 2025

This publication is licensed under the terms of the Open Government Licence v3.0 except where otherwise stated. To view this licence, visit nationalarchives.gov.uk/doc/open-government-licence/version/3 or write to the Information Policy Team, The National Archives, Kew, London TW9 4DU, or email: psi@nationalarchives.gov.uk.

Where we have identified any third-party copyright information you will need to obtain permission from the copyright holders concerned.

Any enquiries regarding this publication should be sent to us at:
cwcna@energysecurity.gov.uk

Contents

Annual past electronic declaration for Schedule 3 Chemicals	4
1. Background to Annual Past Declaration	5
2. Format of the Annual Past Electronic Declaration Form	5
3. Confidentiality and Security of Information	6
Flow Chart to determine Declaration Requirement	6
Completing the Schedule 3 Annual Past Declaration	
Part A: Site details	7
Part B. Plant details	9
Part C. Schedule 3 Chemical details at this site	10
Part D: Chemical sources	12
Part E: Customer details	13
Annexes to annual past declaration guidance notes for Schedule 3 Chemicals	14
Annex A: Schedule 3 Chemicals	14
Annex B: Examples of Schedule 2 Chemicals	15
Annex C. Product Group Codes	17
Annex D: Definitions	20
Annex E: Flow Chart	22
Annex F: Crown Dependencies and British Overseas Territories	23

Annual past electronic declaration for Schedule 3 Chemicals

These Guidance Notes accompany a notice served under section 22(1) of the Chemical Weapons Act 1996 (“the 1996 Act”). The statutory notice requires the full and accurate completion of an electronic declaration form(s). The electronic declaration form(s) must be completed in accordance with these Guidance Notes. The duly completed electronic declaration form(s) must then be submitted via the Chemical Weapons Convention Declaration Database to the UK Chemical Weapons Convention National Authority (UKNA). The notice specifies a date by which you must ensure that the National Authority receives the completed electronic declaration form(s).

The notice under section 22(1) creates a legal obligation which must be complied with. Failure to return the completed electronic declaration form(s) by the due date without reasonable excuse is an offence contrary to section 22(3) of the 1996 Act. It is also an offence, contrary to section 22(4) of the 1996 Act, knowingly to provide false or misleading information in completing the electronic declaration form(s).

These guidance notes explain how to complete an electronic declaration of past activity in past calendar year for Schedule 3 chemicals. You must read them carefully before completing the electronic declaration form(s).

Completed electronic declaration form(s) should be submitted to the UKNA via the Chemical Weapons Convention Declarations Database no later than **the deadline date as specified on the Legal Notice for this declaration**.

If you have any queries on how to accurately complete the declaration form(s) please contact the UKNA for further guidance and advice.

1. Background to Annual Past Declaration

An Annual Past Declaration is required for all sites, which in the given year produced more than 30 tonnes of a chemical listed in Schedule 3 to the Chemical Weapons Convention (CWC).

This specified quantity is the point at which electronic declarations become mandatory. Additionally, if the production exceeds 200 tonnes, the Organisation for the Prohibition of Chemical Weapons (OPCW) is authorised to conduct inspections of the site.

The seventeen (17) chemicals covered under Schedule 3 of the CWC is at Annex A to these guidance notes.. In addition, the OPCW's Handbook on Chemicals is located on the UKNA's website at "Making a Declaration", along with guidance on how to complete each specific declaration. Declarable Schedule 2 plants also need to be detailed and examples of chemicals covered under Schedule 2 of the CWC is at Annex B to these guidance notes.

The production of mixtures, which contain greater than 30% of a Schedule 3 chemical, may also need to be declared and detailed guidance on how to deal with mixtures is at Annex D to these guidance notes.

The flow chart at Annex E is for use in clarifying whether an organisation needs to make an electronic declaration, particularly in relation to mixtures that contain Schedule 3 chemicals.

2. Format of the Annual Past Electronic Declaration Form

Part A of the electronic declaration form asks for information about the site where Schedule 3 chemicals are produced.

Part B of the electronic declaration form asks for information on all plants on the site where Schedule 3 chemicals are produced. At Part B a separate record must be completed for each plant producing Schedule 3 chemicals, except where the total production on site is less than 30 tonnes. The following examples are included to help clarify this statement:

Example 1. Three separate plants on site produced 20, 5 and 15 tonnes respectively of a Schedule 3 chemical. This example requires 3 separate Part B submissions, one for each plant as the total is above the declaration threshold of 30 tonnes produced over the entire site.

Example 2. Three separate plants on site produced 10, 5 and 6 tonnes respectively of a Schedule 3 chemical. This example does not require any submissions as the total is below the declaration threshold of 30 tonnes produced over the entire site.

Part C of the electronic declaration form asks for information on each Schedule 3 chemical above the declaration threshold of 30 tonnes produced over the entire site. At Part C a separate record must be completed for each Schedule 3 chemical produced on site, which in total, is above the declaration threshold.

Annex A contains a list of Schedule 3 chemicals.

Annex B contains a list of examples of Schedule 2 chemicals.

Annex C contains a list of product group codes for chemicals and related products.

Annex D contains definitions of terms used in the declaration form.

Annex E contains a flow chart on whether or not a declaration is required.
Annex F contains a list of Crown and Dependent Territories

3. Confidentiality and Security of Information

Level of Confidentiality of Information (Already pre-filled but can be amended)

A box should be ticked to assign a level of confidentiality to the information that is being provided. This classification only applies to actual data submitted in the electronic declaration and not to information supplied to the OPCW as part of an inspection (which may be accorded a higher category of confidentiality, if necessary).

Definitions are provided below on the types of classification. All information, including that classified "not restricted" is stored within secure areas and is only passed to those with a need to know. A protected or highly protected classification should therefore be used only in exceptional circumstances.

The definitions for each of the classifications are:

Not Restricted - Information that is marked not restricted will not be released by the UKNA or the OPCW unless specifically cleared for release. To request release, the OPCW would contact the UKNA who, in turn, would ask the company for permission to release any information.

Restricted - Information the unauthorised disclosure of which would be prejudicial to the interests of a commercial or governmental body or of a national of a State Party.

Protected - Information the unauthorised disclosure of which may cause substantial damage to the interests of a commercial or governmental body or of a national of a State Party.

Highly Protected - Sensitive, confidential information the unauthorised disclosure of which would cause serious damage from the point of view of national security or commercial secrecy to the interests of a commercial or governmental body or of a national of a State Party.

Declarations should be accorded the lowest appropriate classification. Not Restricted or Restricted should be chosen unless there is a process awaiting patent, or some other sensitive commercial consideration. However, for Schedule 3 chemicals, if the product is being sold to the open market in bulk, and capacity is known, then no restrictions should apply.

APD Schedule 3 Flow Chart (Already pre-filled but can be amended)

Please answer the questions to determine whether it is necessary to make a Schedule 3 declaration for the site. These questions are an electronic version of the flowchart in Annex F.

Completing the Schedule 3 Annual Past Declaration

Part A: Site details

The electronic declaration should only contain information relating to a single site and not multiple sites.

Question A1/A2 – Name of site and site address (Already pre-filled)

Insert the name commonly used for the site and the site address. "Site" (Works, Factory) is defined as the local integration of one or more plants, with any intermediate administrative levels, which are under one operational control, and includes common infrastructure, such as:

- i) Administration and other offices;
- ii) Repair and maintenance shops;
- iii) Medical centre;
- iv) Utilities;
- v) Central analytical laboratory;
- vi) Research and development laboratories;
- vii) Central effluent and waste treatment area; and
- viii) Warehouse storage.

Question A3 – Name of Site Operator (Already pre-filled)

Insert the site operator's name

Question A4 - Site Operator's Address (Already pre-filled)

Only complete this section if the site operator's address is different from the site address

Questions A5 – Name of Site Owner (Already pre-filled)

Only complete this section if the site owner is different from the site operator.

Questions A6– Site Owner's Address (Already pre-filled)

Only complete this section if the site owner's address is different from the site address.

Question A7 – Number of Declarable Schedule 2 Plants at the Site (Already pre-filled)

The number of declarable schedule 2 plants at the site needs to be identified in order to ascertain whether the site is a "mixed plant" site. This means sites that contain a plant or plants, which are covered by more than one schedule or have different plants that are covered by different schedules.

A copy of the chemicals covered under Schedule 2 of the CWC is at Annex B.

A Schedule 2 plant site comprises one or more plant(s) which produced, processed or consumed during any of the previous three calendar years or is anticipated to produce,

process or consume in the next calendar year a chemical listed in Schedule 2 to the Chemical Weapons Convention in excess of

1 kg of a chemical designated "*" in Schedule 2, part A

and/or

100 kg of any other chemical listed in Schedule 2, part A

and/or

1 tonne of any chemical listed in Schedule 2, part B

These quantities are the thresholds at which electronic declarations are required to be made. They are one tenth of the verification thresholds, at which point the site can be inspected by the OPCW.

Additionally plants, which produced, processed or consumed mixtures containing Schedule 2 chemicals must also be declared if, in addition to exceeding the above threshold, they contain, at any point in the operation, Schedule 2 chemicals at concentrations greater than or equal to the following:

Production/processing/consumption of Schedule 2A and 2A* - 1%

Production/ processing/consumption of Schedule 2B - 30%

If the answer to this question is "YES", an electronic declaration for Schedule 2 chemicals must also be completed. Please contact the UKNA if you require registering as a Schedule 2 declarer.

NB: Please refer to the definitions of production, processing and consumption at Annex D to these guidance notes.

Question A8 – Did the Site Produce more than 200 Tonnes of a Schedule 3 Chemical in the given year?

A "yes" response to this question should be given if in the given year the absolute quantity of Schedule 3 chemical produced exceeded 200 tonnes. This is the verification threshold above which the site can be inspected by the OPCW.

NB: Please also refer to the definition of chemical mixtures at Annex D to these guidance notes.

Part B. Plant details

At Part B a separate record should be completed for each declarable plant (producing Schedule 3 chemicals) on the site.

Question B1 – Plant Name (Already pre-filled)

Insert the name commonly used for the plant. "Plant" (Production facility, Workshop) is a relatively self-contained area, structure or building containing one or more units with auxiliary and associated infrastructure, such as:

- (i) Small administrative section;
- (ii) Storage/handling areas for feedstock and products;
- (iii) Effluent/waste handling/treatment area;
- (iv) Control/analytical laboratory;
- (v) First aid service/related medical section; and
- (vi) Records associated with the movement into, around and from the site, of declared chemicals and their feedstock or product chemicals formed from them, as appropriate.

Questions B2/3 – Building and Structure Name and/or Number (Already pre-filled)

Provide the name or number, if there is one, of the building or structure.

Question B4 – Plant Operator (Already pre-filled)

Only complete this section if the operator of the plant is different from the site owner, i.e. the plant is run by a sub-contractor or subsidiary company.

Question B5 – Plant Operator's Address (Already pre-filled)

Only complete this section if the plant operator's address is different from the site owner's address

Question B6/7 – Name of Plant Owner and Owner's Address (Already pre-filled)

Only complete this section if the plant owner is different from the site owner and the address is different from the site address.

Question B8 – Product Group Codes (Already pre-filled but can be amended)

Use the product group codes (PGC) listed at Annex C to describe the products that are manufactured at this plant. Include all activities, including those involving non-scheduled chemicals.

Part C. Schedule 3 Chemical details at this site

This section relates to the plant site. If the same chemical is produced in more than one plant (or at more than one concentration and greater than the concentration limit in Annex D) the amounts should be combined into a single Section C for that chemical. Please also include quantities of the declared chemical, which are produced in non-declarable plants at this site.

At Part C a separate record should be completed for each Schedule 3 chemical to be produced above the declaration threshold or for chemical mixtures containing a Schedule 3 chemical above the threshold and greater than the concentration limit in Annex D.

Question C1 – Name of Plant(s) at which the Schedule 3 chemical is to be Produced (Already pre-filled)

In order to link a Schedule 3 chemical with a specific plant(s) please give the name of the declared plant(s), for which a Part B has been completed, in which the chemical is to be produced.

Questions C2/3/4 – Full Description of the Schedule 3 Chemical (Already pre-filled but can be amended)

The International Union of Pure and Applied Chemistry (IUPAC) chemical name, common or trade name and the Chemical Abstracts Service registry number (if assigned) should be provided in response to these questions. The structural formula should also be included as an attachment to the declaration form, where practicable.

Question C5 – Annual Production for given year

Record here the total amount of the Schedule 3 chemical that was produced in the given year. If the Schedule 3 chemical is contained in a mixture, the total amount of the mixture and percentage concentration should also be provided.

NOTE – Aggregate National Data (AND)

An Aggregate National Data (AND) electronic declaration should be completed if the volume of Schedule 3 chemical production falls below the APD threshold - see part 1 of the guidance: 'Background to Annual Past Declaration'. You will need to provide the UKNA with certain basic quantitative data for amalgamation and inclusion in the UK's declaration. Please contact the UKNA if you require registering as an AND declarer.

Question C6 – Purpose of Production of the Schedule 3 Chemical (Already pre-filled but can be amended)

The purpose of production of the Schedule 3 chemical should be ticked. Please note the following guidance on the boxes:

- **In-line consumption as produced (captive use).** If the chemical is not sent to a storage container (e.g. tank, vessel, or drum) before being consumed in another process on site (this includes waste treatment e.g. phosgene being consumed in scrubbers) then the "in-line consumption as produced (captive use)" box should be selected.

- **Synthetic intermediate stored and/or used on site.** If the chemical is stored for use in another process on site then the "synthetic intermediate stored and/or used on site" box should be selected.
- **Transfer to other sites.** If the chemical is shipped from the site then the "transfer to other sites" box should be selected.

Question C7 – Imports of the Schedule 3 chemical in given year, from countries outside the UK

Record here the total quantities of the Schedule 3 chemical imported from outside the UK in the given year from each country. If the Schedule 3 chemical is present as a mixture, the amount of the mixture should also be provided. Please give quantities in tonnes to three significant figures (where available).

Please see Annex F for countries that are Crown Dependencies and British Overseas Territories. Imports from these countries do not need to be declared.

Question C8 – Exports of the Schedule 3 chemical in the given year, to countries outside the UK

Record here the total quantities of the Schedule 3 chemical exported outside the UK in the given year to each destination country. Direct exports do not include goods sold to a trader in the UK for onward export. If the Schedule 3 chemical is present as a mixture, the amount of the mixture should also be provided. Please give quantities in tonnes to three significant figures (where available).

Please see Annex F for countries that are Crown Dependencies and British Overseas Territories. Exports to these countries do not need to be declared.

Part D: Chemical sources

Part D of the electronic declaration form asks for the details of all the UK companies from whom you obtained the Schedule 3 chemicals in your possession in the given year.

In order to ensure that the UK National Authority is aware of all relevant companies/entities involved in declarable CWC Schedule 3 chemical activities, the details of all the UK companies from whom you obtained the Schedule 3 chemicals in your possession in the given year is required. If you do not source Schedule 3 chemicals from the UK (i.e. you import or you produce your own) Part D is not applicable.

At Part D a separate record must be completed for additional sources as necessary

Section D1 and D2 – Company Name and Address (Already pre-filled but can be amended)

Insert the name and address of the UK company(ies) from which you have sourced the Schedule 3 chemicals in your possession in the given year.

Section D3 – Schedule 3 Chemicals Provided by the Company (Already pre-filled but can be amended)

Insert the chemical name, common or trade name and the Chemical Abstracts Service registry number (if assigned) of each Schedule 3 chemical supplied by the company detailed in Sections D1 and D2.

Part E: Customer details

Part E of the electronic declaration form asks for the details of all the UK companies to whom you sent the Schedule 3 chemicals in your possession in the given year.

In order to ensure that the UKNA is aware of all the relevant companies/entities involved in declarable CWC Schedule 3 chemical activities, the details of all the UK companies you sent the Schedule 3 chemicals to in the given year is required. If you do not sell Schedule 3 chemicals to other UK organisations (i.e. you export or you only consume and/or process without selling the mixture on (if the mixture is sold to a UK company/entity then the relevant concentration level needs applying to determine whether the customer details need to be provided)) then Part E is not applicable.

At Part E a separate record must be completed for additional customers as necessary

Section E1 and E2 – Company Name and Address (Already pre-filled but can be amended)

Insert the name and address of the UK company(ies) to whom you sent the Schedule 3 chemicals in your possession in given year.

Section E3 – Schedule 3 Chemicals Supplied to the Company (Already pre-filled but can be amended)

Insert the chemical name, common or trade name and the Chemical Abstracts Service registry number (if assigned) of each Schedule 3 chemical supplied to the company detailed in Sections E1 and E2.

Declaration

The electronic declaration form must be electronically signed/authorised by a person of the appropriate level of responsibility who is in a position to verify the accuracy of the information and who has legal authority to sign on behalf of the company/organisation.

Contact details can be updated using the 'Update My Details' link from the workbasket menu.

Position (Already pre-filled but can be amended)

Please choose the description which most closely matches your position within the organisation on whose behalf you are submitting the declaration.

Viewing Previous Years Declarations

To view your sites previous years electronic declarations, you should access the "CWC Declarations" option on the left-hand menu which goes to a search screen. You can then access and view all past declarations.

Annexes to annual past declaration guidance notes for Schedule 3 Chemicals

Annex A: Schedule 3 Chemicals

	Chemical The OPCW Handbook on Chemicals provides examples of declared CWC Schedule 1, 2 and 3 chemicals.	Chemical Abstract Service Registry Number (CAS)	Annual production quantity above which declarations are required
	A. Toxic Chemicals:		
1.	Phosgene: Carbonyl dichloride	(75-44-5)	30 tonnes
2.	Cyanogen chloride	(506-77-4)	30 tonnes
3.	Hydrogen cyanide	(74-90-8)	30 tonnes
4.	Chloropicrin: Trichloronitromethane	(76-06-2)	30 tonnes
	B. Precursors:		
5.	Phosphorus oxychloride	(10025-87-3)	30 tonnes
6.	Phosphorus trichloride	(7719-12-2)	30 tonnes
7.	Phosphorus pentachloride	(10026-13-8)	30 tonnes
8.	Trimethyl phosphite	(121-45-9)	30 tonnes
9.	Triethyl phosphite	(122-52-1)	30 tonnes
10.	Dimethyl phosphite	(868-85-9)	30 tonnes
11.	Diethyl phosphite	(762-04-9)	30 tonnes
12.	Sulfur monochloride	(10025-67-9)	30 tonnes
13.	Sulfur dichloride	(10545-99-0)	30 tonnes
14.	Thionyl chloride	(7719-09-7)	30 tonnes
15.	Ethyldiethanolamine	(139-87-7)	30 tonnes
16.	Methyldiethanolamine	(105-59-9)	30 tonnes
17.	Triethanolamine	(102-71-6)	30 tonnes

Note:

The OPCW's Handbook on Chemicals is located on the UKNA's website at "Making a Declaration" along with guidance on how to complete each specific declaration.

Annex B: Examples of Schedule 2 Chemicals

	Chemical The OPCW Handbook on Chemicals provides examples of CWC Schedule 1, 2 and 3 chemicals.	Chemical Abstract Service Registry Number (CAS)	Annual production, processing, or consumption quantity above which declarations are required
	A. Toxic Chemicals:		
1.	Amiton: O,O-Diethyl S-[2-(diethylamino)ethyl] phosphorothiolate and corresponding alkylated or protonated salts	(78-53-5)	100 kg
2.	PFIB: 1,1,3,3,3-Pentafluoro-2-(trifluoromethyl)-1-propene	(382-21-8)	100 kg
3.	BZ: 3-Quinuclidinyl benzilate (*)	(6581-06-2)	1 kg
	B. Precursors:		
4.	Chemicals, except for those listed in Schedule 1, containing a phosphorus atom to which is bonded one methyl, ethyl or propyl (normal or iso) group but not further carbon atoms, e.g. Methylphosphonyl dichloride Dimethyl methylphosphonate <i>Exemption:</i> Fonofos: O-Ethyl S-phenyl ethylphosphonothiolothionate	(676-97-1) (756-79-6) (944-22-9)	1 tonne
5.	N,N-Dialkyl (Me, Et, n-Pr or i-Pr) phosphoramidic dihalides		1 tonne
6.	Dialkyl (Me, Et, n-Pr or i-Pr) N,N-dialkyl (Me, Et, n-Pr or i-Pr)-phosphoramidates		1 tonne
7.	Arsenic trichloride	(7784-34-1)	1 tonne
8.	2,2-Diphenyl-2-hydroxyacetic acid	(76-93-7)	1 tonne
9.	Quinuclidin-3-ol	(1691-34-7)	1 tonne
10.	N,N-Dialkyl (Me, Et, n-Pr or i-Pr)aminoethyl-2-chlorides and corresponding protonated salts		1 tonne
11.	N,N-Dialkyl (Me, Et, n-Pr or i-Pr) aminoethane-2-ols and corresponding protonated salts <i>Exemptions:</i> N,N-Dimethylaminoethanol and corresponding protonated salts N,N-Diethylaminoethanol and corresponding protonated salts	(108-01-0) (100-37-8)	1 tonne

	Chemical The OPCW Handbook on Chemicals provides examples of CWC Schedule 1, 2 and 3 chemicals.	Chemical Abstract Service Registry Number (CAS)	Annual production, processing, or consumption quantity above which declarations are required
12.	N,N-Dialkyl (Me, Et, n-Pr or i-Pr) aminoethane-2-thiols and corresponding protonated salts		1 tonne
13.	Thiodiglycol: Bis(2-hydroxyethyl)sulfide	(111-48-8)	1 tonne
14.	Pinacolyl alcohol: 3,3-Dimethylbutane-2-ol	(464-07-3)	1 tonne

Note:

The OPCW's Handbook on Chemicals is located on the UKNA's website at "Making a Declaration" along with guidance on how to complete each specific declaration.

Annex C. Product Group Codes

Code	Description: Chemicals and Related Products
511	<p>Hydrocarbons and their halogenated, sulfonated, nitrated or nitrosated derivatives</p> <p>Typical chemicals include: aliphatic hydrocarbons as ethylene, propylene, butylene; cyclic hydrocarbons as benzene, toluene, xylene, ethylbenzene, cumene; ethylene dichloride, vinyl chloride, trichloroethylene, 1-chlorododecane, tetrafluorethylene, nitrobenzene, 2,4-dinitrotoluene, hexafluoropropene</p>
512	<p>Alcohols, phenols, phenol-alcohols, and their halogenated, sulfonated, nitrated or nitrosated derivatives, except ethanol and methanol (see Code 519)</p> <p>Typical chemicals include: fatty alcohols, glycerol, propanol, butanol, D-glucitol (sorbitol), phenol</p>
513	<p>Carboxylic acids and their esters, anhydrides, acyl halides, peroxides and peroxyacids; their halogenated, sulfonated, nitrated or nitrosated derivatives and their salts</p> <p>Typical chemicals include: acetic acid and its salts, formic acid, its salts and esters, lactic acid, tartaric acid, citric acid and their salts and esters, isophthaloyl chloride, terephthaloyl chloride, methyl acetate, ethyl acetate, n-butyl acetate, malic acid, fumaric acid, maleic anhydride, phthalic anhydride, acetic anhydride, heptafluorobutyric peroxiacid, bis(dodecafluoroheptanoyl) peroxide</p>
514	<p>Nitrogen-function compounds, except urea (see Code 519)</p> <p>Typical chemicals include: octylated diphenylamine, nonylated diphenylamine, ethylenediamine, cyclohexylamine, aniline, 1,3-diaminocyclohexane, diphenylamine, azodicarbonamide, toluene diisocyanate, organic cyanides, methylene diphenyl isocyanate, acrylonitrile</p>
515	<p>Heterocyclic compounds (except cyclic ethers), and sulfonamides</p> <p>Typical chemicals include: thiophene and N-butyl benzene sulfonamide</p>
516	<p>Other organic chemicals, except formaldehyde, ethyl tert-butyl ether (ETBE) and methyl tert-butyl ether (MTBE) (see Code 519)</p> <p>Typical chemicals include: ethers, dialkyl peroxides, methylethylketone, furfural, dimethyl carbonate, tetraalkyl thiuramdisulfide, trimethyl phosphate, ethylene oxide</p>
519	<p>Methanol, ethanol, urea, formaldehyde, ethyl tert-butyl ether (ETBE) methyl tert-butyl ether (MTBE), surfactants based on sulfonic acids and fatty acid salts</p>

522	Inorganic chemical elements, oxides and halogen salts
523	Salts and peroxysalts, of inorganic acids; metal complexes of organic and inorganic ligands Typical chemicals include: sodium cyanide, ammonium cyanide, ammonium carbonate, ammonium bicarbonate, iron pentacarbonyl and metal complexes of triphenylphosphine
524	Organometallic compounds Typical chemicals include: dichloro(cycloocta-1,5-diene)platinum(II), phenylsilver, butyllithium
525	Radioactive and associated materials
531	Synthetic organic colouring matter and colour lakes, and preparations based thereon Typical chemicals include: azo based dyes, naphthazarine based dyes (dibromonaphthazarins), triphenylmethane dyes (TPM), quinoline, anthraquinone, pyrene, sulfanilic acid, fluorescent brightening agents, luminophores
532	Dyeing and tanning extracts, and synthetic tanning materials
533	Pigments, paints, varnishes and related materials
541	Medicinal and pharmaceutical products, including drug substances and active pharmaceutical ingredients other than medicaments of Group 542 Typical chemicals include: cephalosporins, amino acid derivatives, synthetic glycosides, atracurium besilate, alkylidene nitrile, tinidazole, nimesulide, butoconazole, flutamide, famotidine, penicillins or derivatives, streptomycins or derivatives, other antibiotics, synthetic insulin, phenothiazine compounds
542	Medicaments (including veterinary medicaments)
551	Essential oils, perfume and flavour materials
553	Perfumery, cosmetic or toilet preparations (excluding soaps)
554	Soap, cleansing and polishing preparations, except surfactants based on sulfonic acids and fatty acid salts (see Code 519)
562	Synthetic Fertilizers
571	Polymers of ethylene, in primary forms
572	Polymers of styrene, in primary forms
573	Polymers of vinyl chloride or of other halogenated olefins in primary forms

574	Polyacetals, other polyethers and epoxide resins, in primary forms; Polycarbonates, alkyd resins, polyallyl esters and other polyesters
575	Other plastics, in primary forms
579	Waste, parings and scrap, of plastics
581	Tubes, pipes and hoses, and fittings therefor, of plastics
582	Plates, sheets, film, foil and strip, of plastics
583	Monofilament of which any cross-sectional dimension exceeds 1 mm, rods, sticks and profile shapes, whether or not surface-worked but not otherwise worked, of plastics
591	<p>Insecticides, rodenticides, fungicides, herbicides, anti-sprouting products and plant-growth regulators, disinfectants and similar products, put up in forms or packings for retail sale or as preparations or articles (e.g. sulfur-treated bands, wicks and candles, and fly papers)</p> <p>Typical chemicals include: cypermethrin, glyphosate and derivatives, acephate, methamidophos, pyrethroid, dimethoate, malathion, triazoles, parathion, trifluralin, atrazine, diuron (DCMU), endosulfan, phenoxy family herbicides, propanil, sulfosulfuron, fipronil, chloramine-T, phoxim, zineb, tebuconazole, monocrotophos, diquat, paraquat, acifluorfen, lactofen, clomazone, thiocarbamates and dithiocarbamates.</p>
592	Starches, inulin and wheat gluten; albuminoidal substances; glues
593	Explosives and pyrotechnic products
597	<p>Prepared additives for mineral oils and the like; prepared liquids for hydraulic transmission; anti-freezing preparations and prepared de-icing fluids; lubricating preparations</p> <p>Typical chemicals include: di-2-ethylhexyl carbonate, di-3,5,5-trimethylhexyl carbonate</p>
598	Miscellaneous chemical products
599	Others

Notes:

1. Shaded PGC's are not recommended for OCPF declarations.
2. Typical chemicals included in each PGC description are for illustrative purposes only and do not represent a complete list of all chemicals within the group, nor does it imply that any of these specific examples are produced at the plant site.

Annex D: Definitions

The definitions below follow the definitions in the CWC and might be slightly different from their normal meaning within the chemical industry.

Production

Production is defined under the CWC as “formation through a chemical reaction or synthesis” - that is, arising from a chemical change involving the formation and/or breaking of chemical bonds.

It is understood, for declaration purposes, to include all steps in the production of a chemical in any units within the same plant through chemical reaction, including any associated processes (e.g. purification, separation, extraction, distillation, or refining) in which the chemical is not converted into another chemical. The exact nature of any associated process (e.g. purification, etc.) is not required to be declared.

It is also understood, for declaration purposes, to include intermediates, by-products, or waste products that are produced and consumed within a defined chemical manufacturing sequence, where such intermediates, by-products, or waste products are chemically stable and therefore exist for a sufficient time to make isolation from the manufacturing stream possible, but where, under normal or design operating conditions, isolation does not occur.

Processing

Processing is physical manipulation of a chemical without a chemical reaction taking place that is without the formation or breaking of chemical bonds. Examples of processing include formulation, extraction, purification, crystallisation, distillation, condensation, consumption, dilution, concentration, compression and dispersion. Any waste disposal processes occurring on site involving a Schedule 3 chemical, which do not result in the consumption of that chemical (e.g. disposal of waste containing a Schedule 3 chemical in a landfill on site or blending of such waste with other materials), should also be considered as processing. However, activities such as repackaging and distribution are not considered to be processing.

Consumption

Consumption of a chemical means its conversion into another chemical through a chemical reaction involving the making or breaking of chemical bonds. Therefore, some forms of waste disposal in which the Schedule 3 chemical is converted into another chemical, such as incineration, biodegradation or hydrolysis, e.g. in a scrubber system, should be considered as consumption.

Import

An import is the physical movement of scheduled chemicals into the territory or any other place under the jurisdiction or control of the UK from the territory or any other place under the jurisdiction or control of another country, excluding transit operations.

You must specify the country from which the scheduled chemicals were dispatched, excluding the countries through which the scheduled chemicals transited and regardless of the country in which the scheduled chemicals were produced.

Declare chemicals that are directly imported by your organisation from outside the UK. Direct imports do not include imported goods bought from or through a trader in the UK. Imports from the Crown Dependencies and British Overseas Territories (Annex F) do not need to be declared.

Export

An export is the physical movement of scheduled chemicals out of the territory or any other place under the jurisdiction or control of the UK into the territory or any other place under the jurisdiction or control of another country, excluding transit operations. You must specify the intended country of destination, excluding the countries through which the scheduled chemicals transited.

Declare chemicals directly exported by your organisation to outside the UK. Direct exports do not include goods sold to a trader in the UK for onward export. Exports to the Crown Dependencies and British Overseas Territories (Annex F) do not need to be declared.

Transit Operation

Transit operations are the physical movements in which scheduled chemicals pass through the territory of a country on the way to their intended country of destination. Transit operations include changes in the means of transport, including temporary storage only for that purpose.

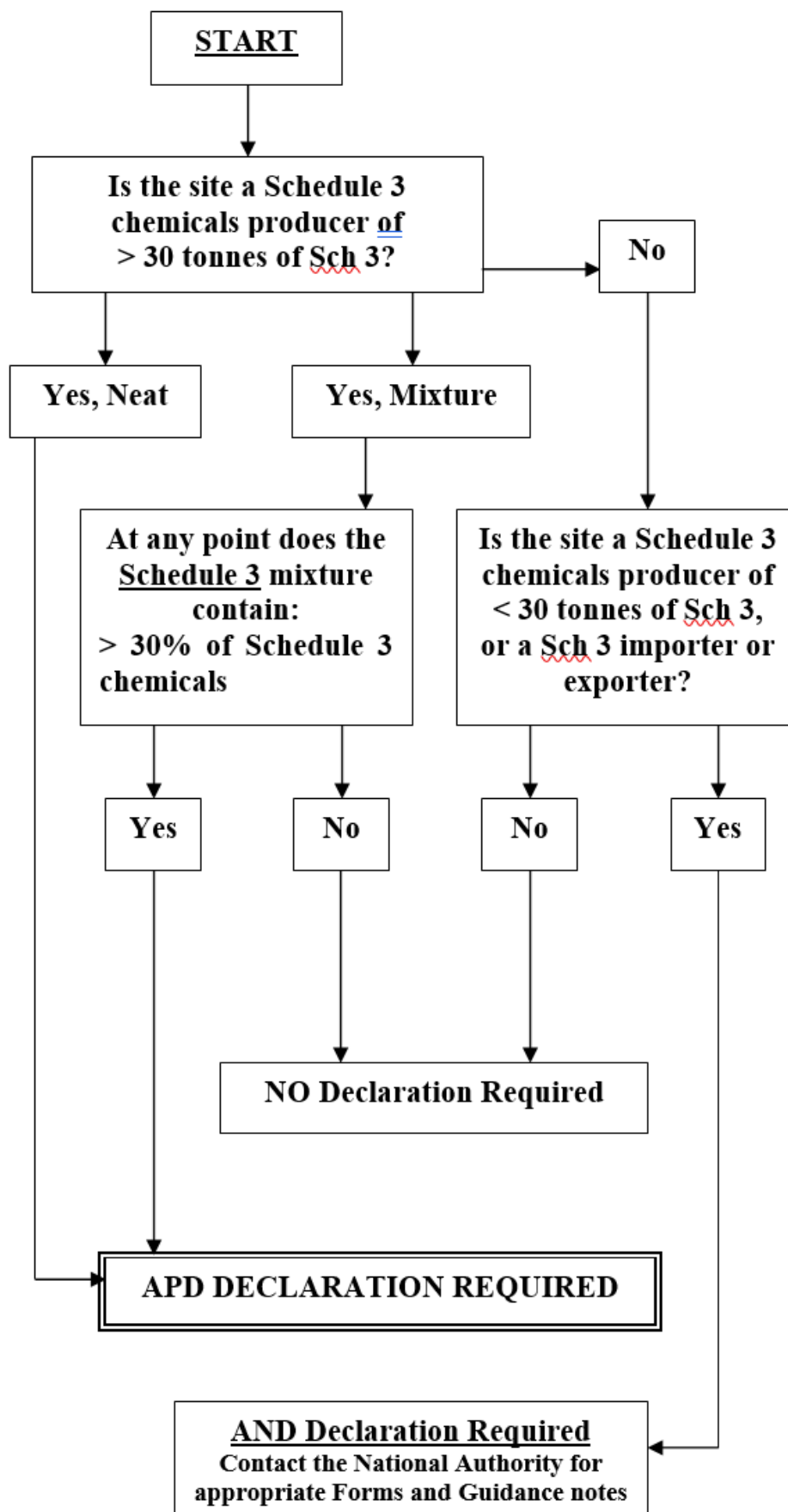
Chemical Mixtures

An electronic declaration is required for mixtures containing Schedule 3 chemicals where, at any point in the operation, the concentration of the Schedule 3 chemical is greater than 30%.

This concentration level also applies to the import and export of chemical mixtures containing Schedule 3 chemicals.

It is important to note that if the trigger threshold of 30 tonnes of absolute chemical is not exceeded then an AND declaration is required. Please contact the UK National Authority to register as an AND declarer.

Annex E: Flow Chart



Annex F: Crown Dependencies and British Overseas Territories

Crown Dependencies

- Guernsey
- Isle of Man
- Jersey

British Overseas Territories

- Anguilla
- Bermuda
- British Antarctic Territory
- British Indian Ocean Territory
- British Virgin Islands
- Cayman Islands
- Falkland Islands
- Gibraltar
- Montserrat
- Pitcairn Islands
- South Georgia and the South Sandwich Islands
- St Helena (with sub-dependencies Tristan da Cunha and Ascension Island)
- Turks and Caicos Islands

This publication is available from: www.gov.uk/government/publications/chemical-weapons-convention-how-to-complete-a-declaration

If you need a version of this document in a more accessible format, please email alt.formats@energysecurity.gov.uk. Please tell us what format you need. It will help us if you say what assistive technology you use.