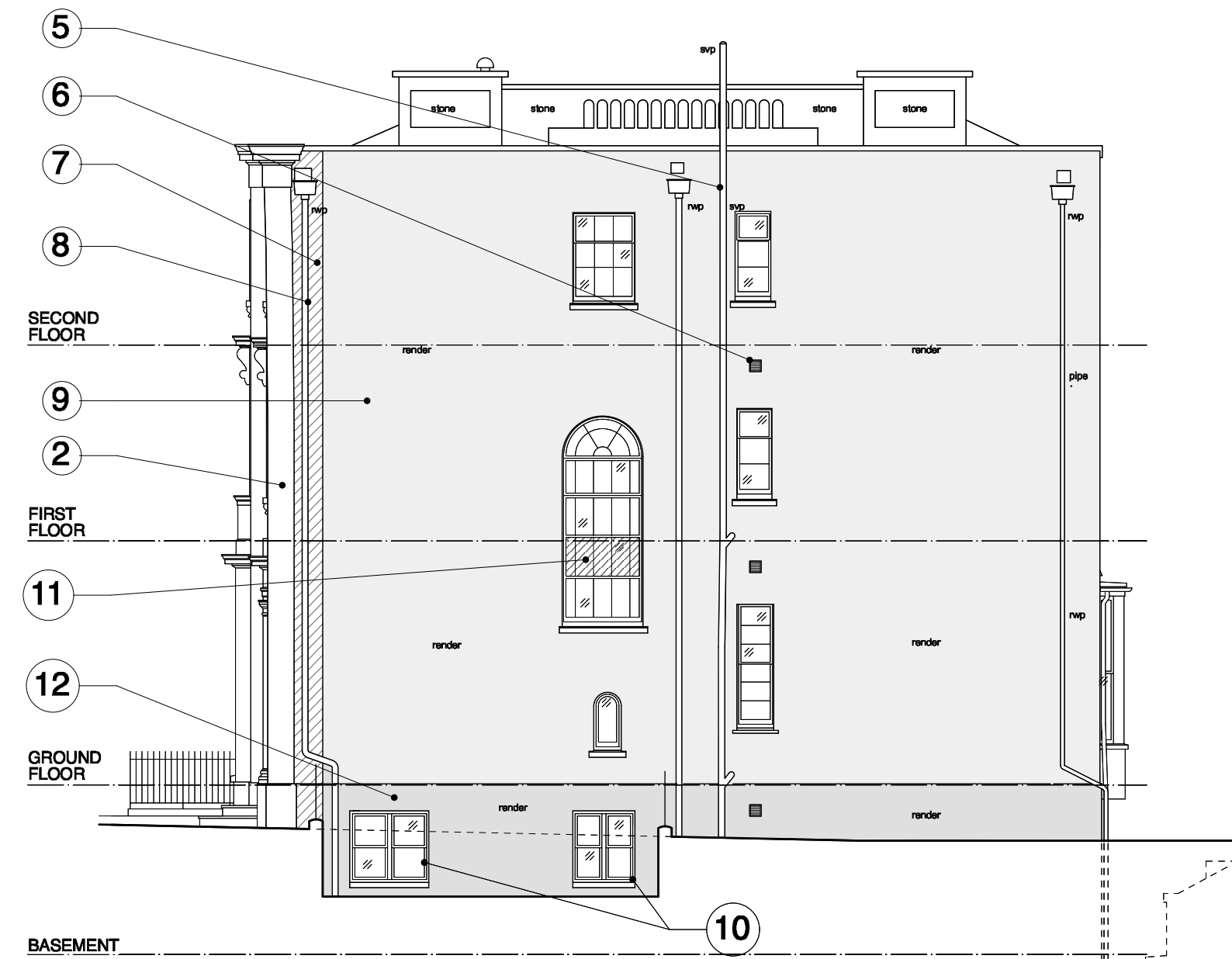




Proposed Front West Elevation



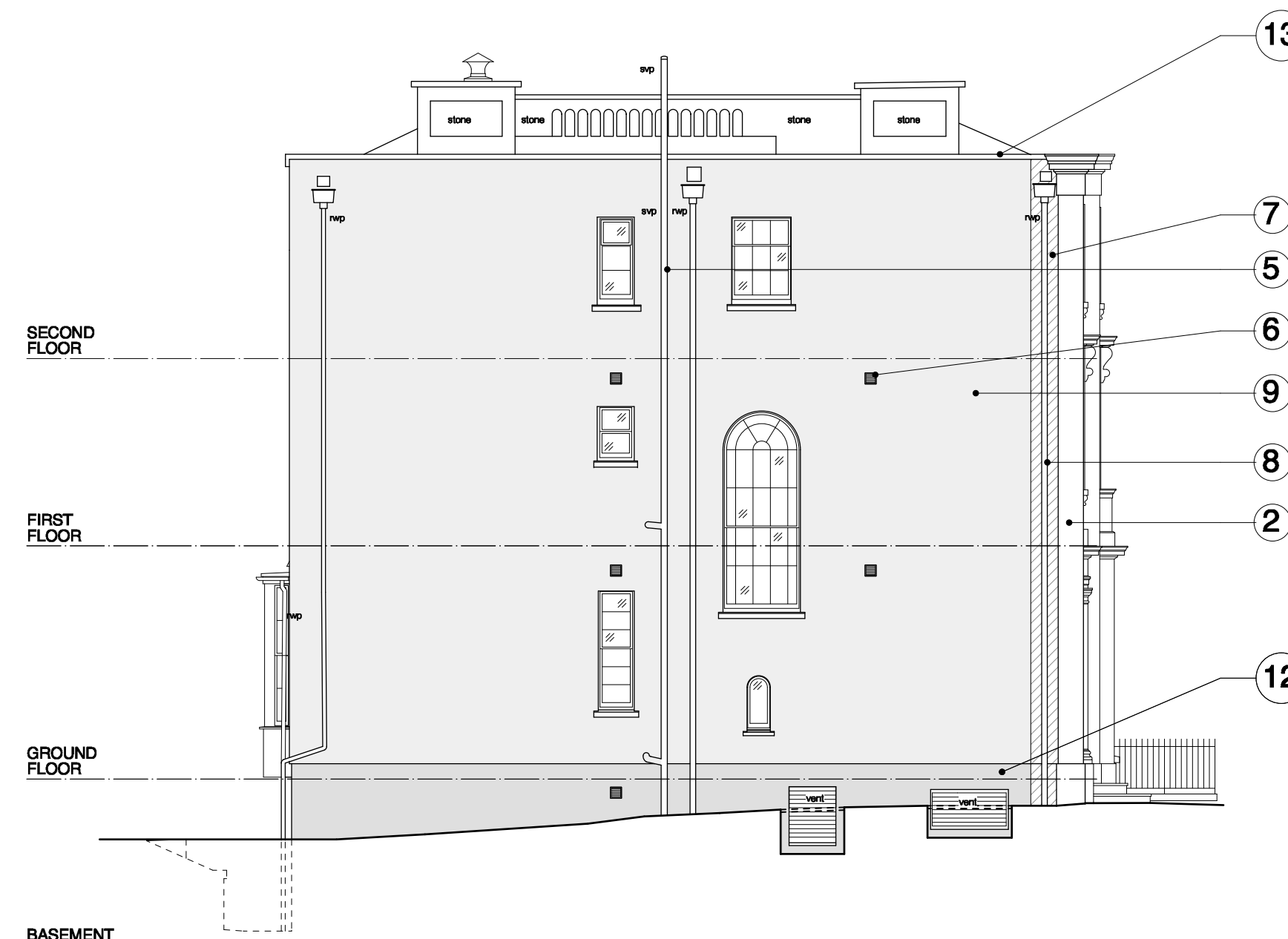
Proposed Side South Elevation

Notes

1. Photovoltaic array to pitched roof - refer to site / roof plan
2. Paint removed from facade by stone specialist to reveal original Bath Stone finish
3. Lime putty render to enlarged lightwell with silicate paint finish (colour black)
4. New lightwells to west/front and south side with black painted galvanised steel railings. Refer to detail dwg 308
5. New cast iron soil vent pipe to replace existing (colour-black)
6. Painted cast aluminium louvre for continuous extract fans within flats (colour - black). Ventilation units to flats to be paired where possible to minimise penetrations
7. New Bath stone detail to the same depth of the insulated render
8. New Cast aluminium heritage rainwater pipes and hopper (colour - black)
9. Insulated render finish (colour - pale cream). All windows and cills adjusted to maintain the 120mm window reveal as existing
- 10.New double glazed timber windows (colour - white)
- 11.Obscure glass to hide new floor
- 12.Insulated render finish to low level (colour -black)
- 13.Concrete coping extended to suit new render with new lead capping
- 14.New glass and stainless steel Juliette balconies to patio doors



Proposed Rear East Elevation



Proposed Side North Elevation

REVISION SUMMARY DATE REVISION