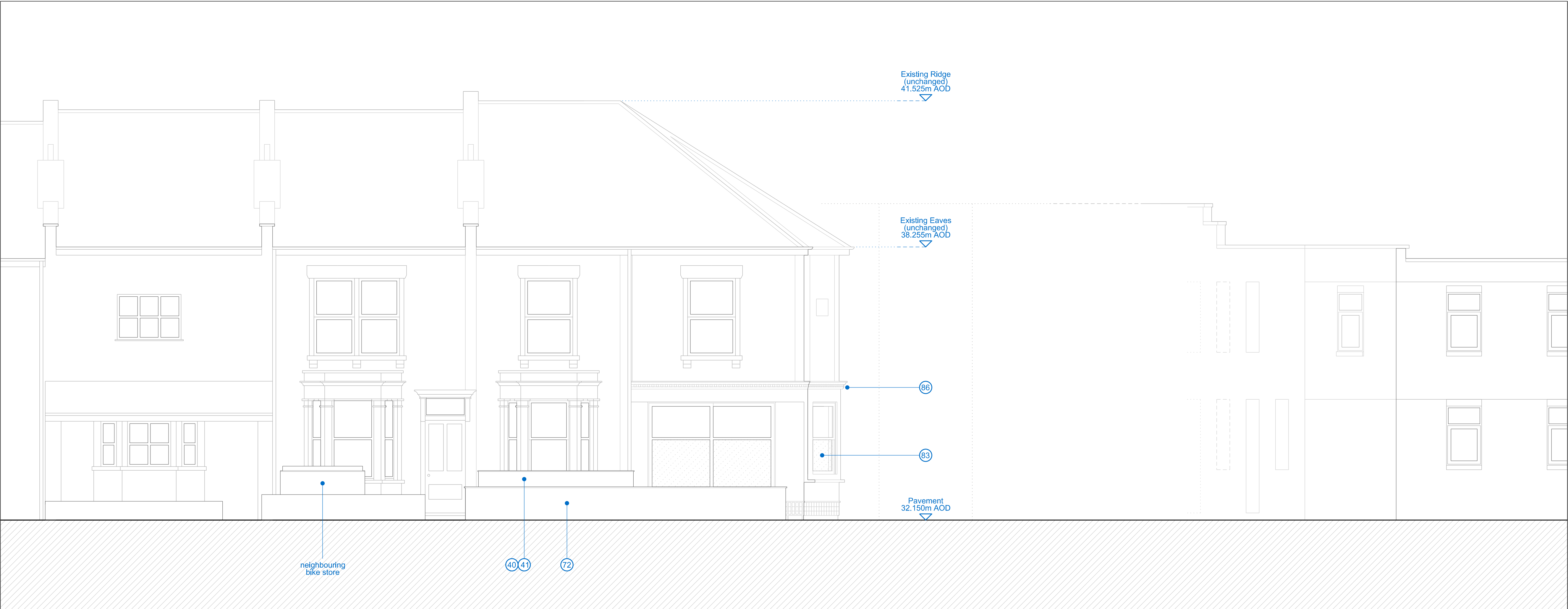


(02)202.01 EXISTING STREET SCENE : NORTH ELEVATION



(02)202.02 PROPOSED STREET SCENE : NORTH ELEVATION

- KEY
- EXISTING SPACES
- Commercial

01 Entrance

02 Shop

03 Back of house

04 WC
- Residential

06 Entrance

07 Stair

08 Hall

09 Bathroom

10 Kitchen

11 Living space

12 Bedroom
- Other

16 Forecourt

17 Parking space
- PROPOSED SPACES
- Front garden

32 Entrance

33 Stair

35 Hall

36 Bathroom

37 Kitchen

38 Living space

39 Bedroom

40 Cycle store

41 Refuse store

42 Built-in storage

43 Utility room

44 Study
- EXISTING FABRIC
- Landscape

51 Cracked concrete surface

52 Asphalt surface

53 Dropped kerb
- Elevations

55 Rendered boundary wall & timber trellis

56 Stone masonry

57 Rendered architrave / quoin

58 Textured rendered wall / stallriser

59 Brick masonry

60 Black uPVC rainwater goods

61 uPVC-framed double-glazed window / door

62 Aluminium-framed shopfront

63 Security shutter metal housing

64 Metal signage

65 Blocked up opening

66 Concrete roof tile

67 Felt flat-roof

68 Boarded door

69 Concrete render

70 Air-conditioning unit
- PROPOSED FABRIC
- Landscape

71 New paving

72 New rendered boundary wall and copings with painted metal railings and gate to side
- Elevations

81 Rendered wall

82 Tiled stallriser

83 uPVC conservation-style window / door

85 Period-style timber shopfront with aluminium-framed double-glazing

86 Painted timber signage board

87 Black cast-iron-style uPVC rainwater goods

88 Concrete roof tile - to match existing

89 Conservation-style Velux rooflight

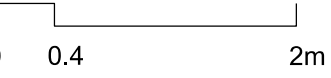
90 Lead dormer cheeks / roof

91 Dark grey single-ply flat-roof membrane

93 Painted timber door

94 Painted render to match existing features

95 Air-source heat pump



job	REDFIELD			<div>Do not write from this drawing It may be modified or used by the Contractor without permission of the Architect All dimensions are in mm unless noted</div>
drawing	EXISTING & PROPOSED STREET SCENE			
status	PLANNING			
scale	1:50	at A1	1:100 at A3	
job nr.	source	drawing number	revision	
A092	A	(02)202	A	