



Animal &
Plant Health
Agency

Great Britain and Northern Ireland Variety List Trials: Trial Procedures for Official Examination of Value for Cultivation and Use (VCU) Harvest 2026

Field peas – spring and winter

Appendices

May 2025

Changes since last version

- Updated year of document and date of last update
- Updated email link to national archives at end of document
- Updated Appendix 4
- Updated Appendix 5

Contents

Scope.....	1
Appendix 1 – Approved Trial Organisers/ Operators	2
1.1 Spring peas.....	2
1.2 Winter peas.....	3
Appendix 2 – Seed treatment and fungicide products for use on VL trials	4
Appendix 3 – Seed despatch deadline dates	5
Appendix 4 – Growing Trial Operators and Trial Locations	6
4.1 Spring peas.....	6
4.2 Winter peas.....	7
4.3 Pathology Trials Operator	7
Appendix 5 – Control varieties for VCU assessments	8
Appendix 6 – Dates by which records should be submitted	9
6.1 To Trials Organiser.....	9
6.2 Plot records to Data Handling Operator	9
6.3 Plot samples to Quality Testing Operator	9
Appendix 7 – Disease assessment for pea	10
Downy Mildew (<i>Peronospora viciae</i>)	10
Bacterial blight and <i>mycosphaerella</i>	11
Appendix 8 – Phenological growth stages and BBCH-identification keys of pea (<i>Pisum sativum</i> L.)	13
Code Description	14
Pea growth stages.....	16

Scope

This document contains the appendices for the main guidance document:

Trial Procedures for Official Examination of Value for Cultivation and Use (VCU) Harvest 2026 – Field peas – spring and winter.

Appendix 1 – Approved Trial Organisers/ Operators

1.1 Spring peas

Activity	Organisers / operators responsible
Data Handling Operator	BioSS
Trials Organiser	BSPB
Pathology Trials Operator	Niab
Trial Inspection Operator	PGRO
Technical Validation Operator	Niab
Quality Testing Operators	Niab/SASA
Data Review and Standards Setting Operator	Niab

1.2 Winter peas

Activity	Organisers / operators responsible
Data Handling Operator	Niab
Trials Organiser	BSPB
Growing Trial Operator	NPZ UK
Seed Handling Operator	Niab
Pathology Trials Operator	Niab
Trial Inspection	PGRO
Technical Validation Operator	Niab
Quality Testing Operators	Niab/SASA
Data Review and Standards Setting Operator	Niab

Appendix 2 – Seed treatment and fungicide products for use on VL trials

To be advised.

Appendix 3 – Seed despatch deadline dates

VCU seed must be delivered to each Seed Handler by:

Spring peas 31 January

Winter peas 18 August

Authentication samples, if requested, must be delivered to the appropriate DUS Test Centre.

Appendix 4 – Growing Trial Operators and Trial Locations

4.1 Spring peas

Growing Trial Operator	Seed Handling Operator (If not Trial Operator)	Location of trial	Trial Description
Niab	Trial Operator	Petham, Kent	Managed
PGRO	Trial Operator	Stubton, Lincolnshire	Managed
PGRO	Trial Operator	Thorney, Peterborough, Cambridgeshire	Managed
Niab	Trial Operator	Sutton Scotney, Hampshire	Managed
Niab	Trial Operator	Howden, Headley Hall, North Yorkshire	Managed

4.2 Winter peas

Growing Trial Operator	Seed Handling Operator (If not Trial Operator)	Location of trial	Trial Description
TBC	Niab SHU	TBC	Managed

4.3 Pathology Trials Operator

Pathology Trials Operator	Location of Trial
Niab	Cambridge

Appendix 5 – Control varieties for VCU assessments

The Control varieties are:

Spring Peas

- **Yield controls:**
 - Carrington (Green pea)
 - Kameleon (White pea)

- **Quality controls:**
 - Sakura (VL2 only)
 - Takayama (VL1 only) (marrowfat pea comparator)
 - Mantara (coloured pea)

- **Pathology benchmark varieties:**
 - Maro (Downy mildew)

Winter Peas

- **Yield controls:**
 - TBC

Appendix 6 – Dates by which records should be submitted

6.1 To Trials Organiser

Record	Latest date of receipt by Trials Organiser
Site data part 1 (including site sketch)	Within 2 months of drilling trial (autumn sown trials). Within one month of drilling trial (spring sown trials)
Site data part 2	By the time trials are harvested
Plot records (in approved electronic format)	Growing Trial Operator should notify Trials Organiser that trial has been harvested within 2 days of harvest

6.2 Plot records to Data Handling Operator

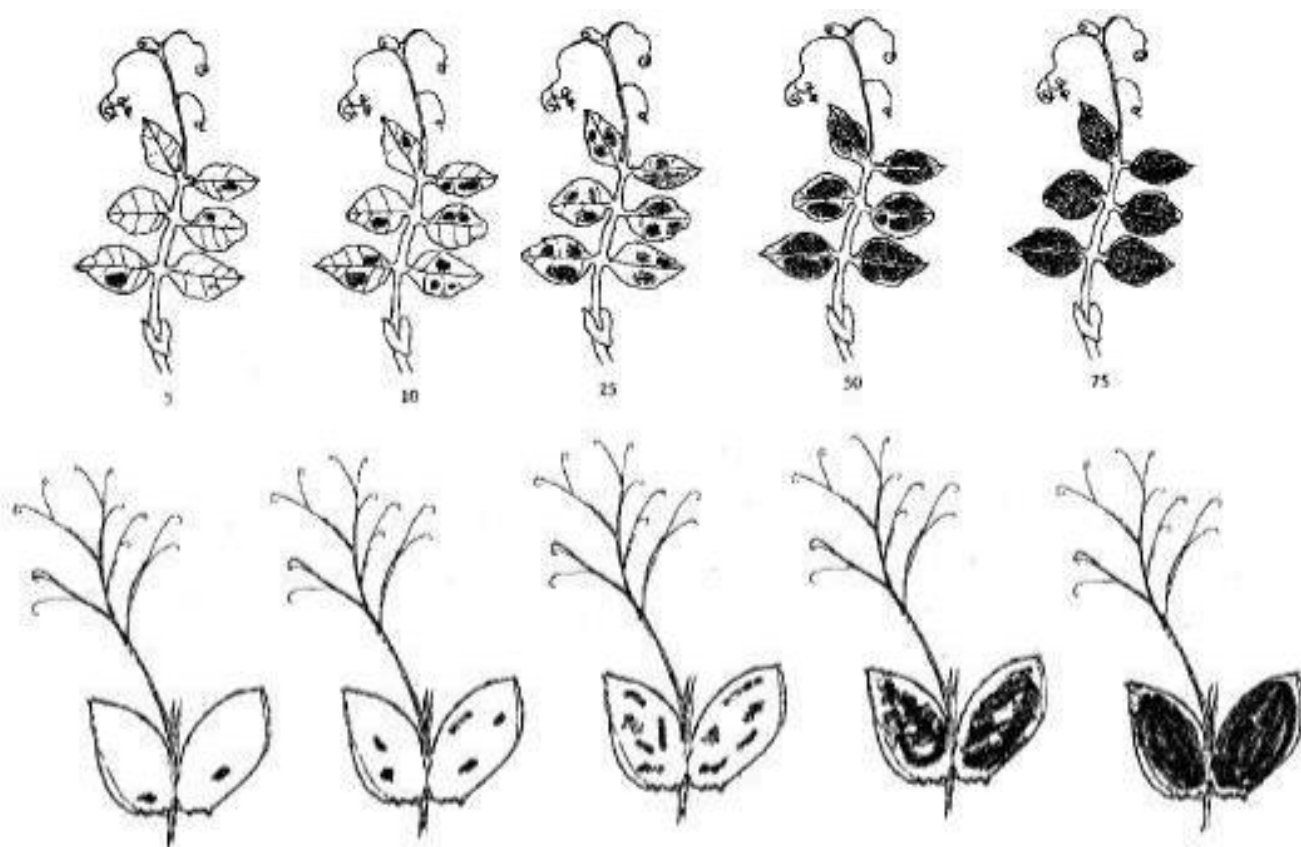
Record	Date
Plot records SHOULD be sent to Data Handling Operator	Within 10 days of record being taken

6.3 Plot samples to Quality Testing Operator

Samples	Date
Plot samples for quality testing SHOULD be sent to the Quality Testing Operator	Within 2 days of harvest

Appendix 7 – Disease assessment for pea

Downy Mildew (*Peronospora viciae*)



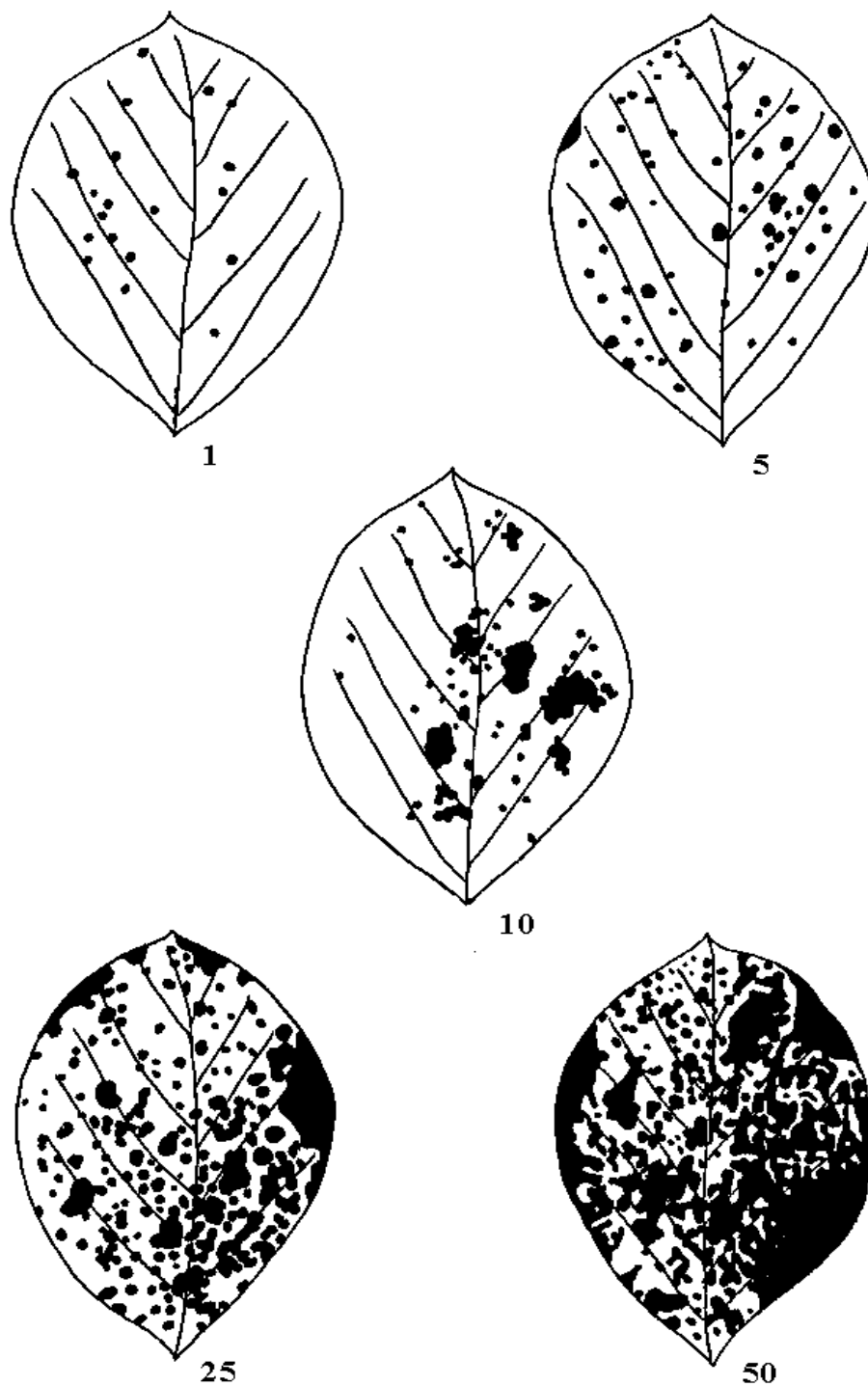
Appendix 7: diagram illustrating the area of Downy Mildew infection on pea leaves.

The area of the pea leaf infected is depicted with examples from: 5%, 10%, 25%, 50%, to 75% infection. No observable infection will correspond to a score of 0. This diagram should be used as a guide for carrying out the assessment.

Notes on assessment:

1. Examine all leaves in 3 areas of each plot.
2. Include all chlorosis and necrosis attributable to downy mildew.
3. Where isolated foci of high infection occur, they should be averaged over the area as a whole.
4. Estimate % infection using the illustrations above as a guide. Interpolate values if necessary. Record the average % infection per plot from the 3 areas.

Bacterial blight and mycosphaerella



Appendix 7: diagram illustrating the area of Bacterial Blight on pea leaves. The area of the pea leaf infected is depicted with examples from 1% to 50% infection. No observable infection will correspond to a score of 0. This diagram should be used as a guide for carrying out the assessment.

Notes on assessment:

- 1. Examine all the leaves on plants within 4 to 6 areas of each plot, each area being approximately 1m². Assess the mean % leaf area infected with disease.**

Appendix 8 – Phenological growth stages and BBCH-identification keys of pea (*Pisum sativum* L.)

Weber and Bleiholder, 1990; Feller et al., 1995 b

The extended BBCH-scale is a system for a uniform coding of phenologically similar growth stages of all mono- and dicotyledonous plant species. The decimal code, which is divided into principal and secondary growth stages, is based on the well-known cereal code developed by ZADOKS et al. (1974) in order to avoid major changes from this widely used phenological key.

- The general scale forms the framework within which the individual scales are developed. It can also be used for those plant species for which no special scale is currently available.
- Similar phenological stages of each plant species are given the same code.
- For each code, a description is given, and for some important stages, drawings are included.
- For the description of the phenological development stages, clear and easily recognised (external) morphological characteristics are used.
- Except where stated otherwise, only the development of the main stem is taken into consideration.
- The growth stages refer to representative individual plants within the crop stand. Crop stand characteristics may also be considered.
- Relative values relating to species- and/or variety-specific ultimate sizes are used for the indication of size.
- The secondary growth stages 0 to 8 correspond to the respective ordinal numbers or percentage values. For example, stage 3 could represent: 3rd true leaf, 3rd tiller, 3rd node or 30% of the final length or size typical of the species or 30% of the flowers open.
- Post harvest or storage treatment is coded 99.
- Seed treatment before planting is coded 00.

The entire developmental cycle of the plants is subdivided into ten clearly recognizable and distinguishable longer-lasting developmental phases. These principal growth stages are described using numbers from 0 to 9 in ascending order. Owing to the very many different plant species there may be shifts in the course of the development or certain stages may even be omitted. The principal growth stages need not proceed in the strict sequence defined by the ascending order of the figures but can occasionally also proceed in parallel.

Code Description

Principal growth stage 0: germination

1. Dry seed
2. Beginning of seed Imbibition
3. Seed imbibition complete
- 5 Radicle emerged from seed
7. Shoot breaking through seed coat
8. Shoot growing towards soil surface, hypocotyl arch visible
9. Emergence: shoot emerges through soil surface (“cracking stage”)

Principle growth stage 1: leaf development

10. Pair of scale leaves visible
 11. First true leaf (with stipules) unfolded or first tendril developed
 12. 2 leaves (with stipules) unfolded or 2 tendrils developed
 13. 3 leaves (with stipules) unfolded or 3 tendrils developed
- Stages continuous till...
19. 9 or more leaves unfolded (with stipules) unfolded or 9 or more tendrils developed

Principal growth stage 3: Stem elongation (main shoot)

- 30 Beginning of stem elongation
 31. 1 visibly extended internode 1
 32. 2 visibly extended internodes 1
 33. 3 visibly extended internodes 1
- Stages continuous till...
39. 9 or more visibly extended internodes ¹

¹ The first internode extends from the scale leaf node to the first true leaf node

Principal growth stage 5: Inflorescence emergence

51. First flower buds visible outside leaves
55. First separated flower buds visible outside leaves but still closed
59. First petals visible, flowers still closed

Principal growth stage 6: flowering

60. First flowers open (sporadically within the population)
61. Beginning of flowering: 10% of flowers open
62. 20% of flowers open

- 63. 30% of flowers open
- 64. 40% of flowers open
- 65. Full flowering: 50% of flowers open
- 67 Flowering declining
- 69 End of flowering

Principal growth stage 7: development of fruit

- 71. 10% of pods have reached typical length; juice exudes if pressed
- 72. 20% of pods have reached typical length; juice exudes if pressed
- 73. 30% of pods have reached typical length; juice exudes if pressed. Tenderometer value: 80 TE
- 74. 40% of pods have reached typical length; juice exudes if pressed. Tenderometer value: 95TE
- 75. 50% of pods have reached typical length; juice exudes if pressed. Tenderometer value: 105 TE
- 76. 60% of pods have reached typical length; juice exudes if pressed. Tenderometer value: 115 TE
- 77. 70% of pods have reached typical length. Tenderometer value: 130 TE
- 79. Pods have reached typical size (green ripe); peas fully formed

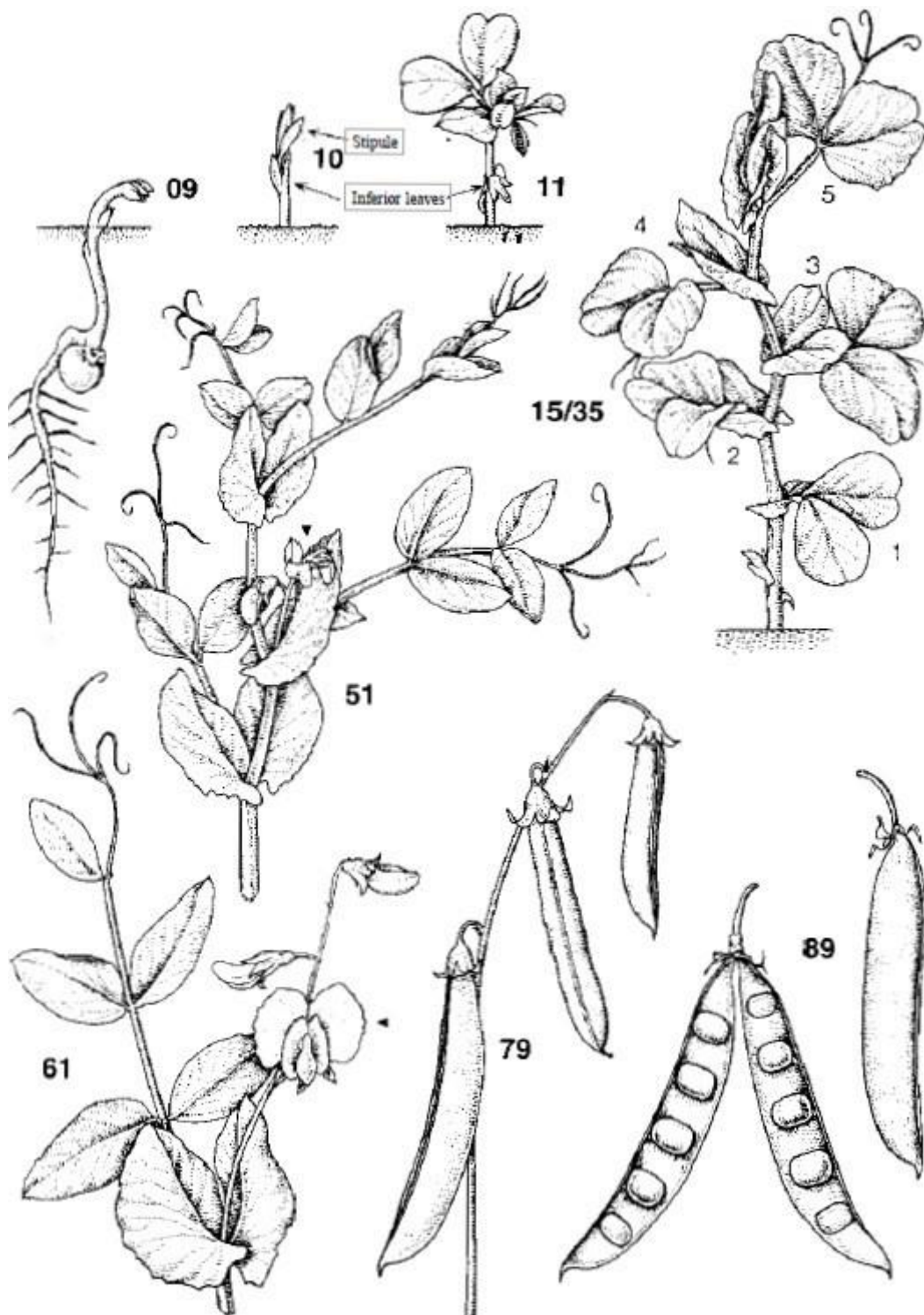
Principal growth stage 8: ripening

- 81. 10% of pods ripe, seeds final colour, dry and hard
- 82. 20% of pods ripe, seeds final colour, dry and hard
- 83. 30% of pods ripe, seeds final colour, dry and hard
- 84. 40% of pods ripe seeds final colour, dry and hard
- 85. 0% of pods ripe seeds final colour, dry and hard
- 86. 60% of pods ripe seeds final colour, dry and hard
- 87. 70% of pods ripe seeds final colour, dry and hard
- 88. 80% of pods ripe seeds final colour, dry and hard
- 89. Fully ripe: all pods dry and brown. Seeds dry and hard (dry ripe)

Principal growth stage 9: senescence

- 97 Plants dead and dry
- 99 Harvested product

Pea growth stages



Appendix 8: Diagram illustrating the main growth stages of a Pea plant, as outlined in the section above.



© Crown copyright 2025

You may re-use this information (excluding logos) free of charge in any format or medium, under the terms of the Open Government Licence v.3. To view this licence visit www.nationalarchives.gov.uk/doc/open-government-licence/version/3/ or email PSI@nationalarchives.gov.uk.

Data Protection:

For information on how we handle personal data visit www.gov.uk and search Animal and Plant Health Agency Personal Information Charter.

This publication is available at www.gov.uk/government/publications

Any enquiries regarding this publication should be sent to us at

webmaster@apha.gov.uk

www.gov.uk/apha

APHA is an Executive Agency of the Department for Environment, Food and Rural Affairs and also works on behalf of the Scottish Government, Welsh Government and Food Standards Agency to safeguard animal and plant health for the benefit of people, the environment and the economy.