

## **Air Quality and Dust Monitoring Monthly Report – May 2025**

**Solihull Metropolitan Borough Council**



## Department for Transport

High Speed Two (HS2) Limited has been tasked by the Department for Transport (DfT) with managing the delivery of a new national high speed rail network. It is a non-departmental public body wholly owned by the DfT.

High Speed Two (HS2) Limited,  
Two Snowhill  
Snow Hill Queensway  
Birmingham B4 6GA

Telephone: 08081 434 434

General email enquiries: [HS2enquiries@hs2.org.uk](mailto:HS2enquiries@hs2.org.uk)

Website: [www.gov.uk/hs2](http://www.gov.uk/hs2)

A report prepared by EWCs and MWCCs on behalf of HS2 Ltd.

High Speed Two (HS2) Limited has actively considered the needs of blind and partially sighted people in accessing this document. The text will be made available in full on the HS2 website. The text may be freely downloaded and translated by individuals or organisations for conversion into other accessible formats. If you have other needs in this regard please contact High Speed Two (HS2) Limited.

© High Speed Two (HS2) Limited, 2025, except where otherwise stated.

Copyright in the typographical arrangement rests with High Speed Two (HS2) Limited.

This information is licensed under the Open Government Licence v2.0. To view this licence, visit [www.nationalarchives.gov.uk/doc/open-government-licence/version/2](http://www.nationalarchives.gov.uk/doc/open-government-licence/version/2) **OGL** or write to the Information Policy Team, The National Archives, Kew, London TW9 4DU, or e-mail: [psi@nationalarchives.gsi.gov.uk](mailto:psi@nationalarchives.gsi.gov.uk). Where we have identified any third-party copyright information you will need to obtain permission from the copyright holders concerned.



# Monthly Summary

- 1.1.1 This Summary Report is published in fulfilment of commitments detailed in the High Speed Rail (London-West Midlands) Environmental Minimum Requirements, Annex 1: Code of Construction Practice, for the nominated undertaker to present the results of air quality and dust monitoring undertaken in Solihull Metropolitan Borough Council (SMBC) during May 2025.
- 1.1.2 Figures 1 to Figure 3 in Appendix A present the current worksites together with the dust monitoring locations.
- 1.1.3 This summary should be read in conjunction with the overview monitoring report monthly available from [www.gov.uk/government/collections/monitoring-the-environmental-effects-of-hs2](http://www.gov.uk/government/collections/monitoring-the-environmental-effects-of-hs2), which highlights: the applicable standards and guidance, as well as the air quality and dust monitoring methodologies to be implemented by nominated undertakers throughout construction.
- 1.1.4 The current worksites, as presented in Appendix A, Figure 1 to Figure 3, include:

## **Sublot 2B2**

### Waste Lane Overbridge Satellite

- Waste Lane realignment.
- Overbridge deck reinforcement.
- Technical backfill.

### Carol Green Rail Underbridge

- Moving traffic.

## **Sublot 2B3**

### Balsall Common Viaduct

- Still fixing and pier filling works.

### Park Lane

- Cutting bulk extraction.
- Landscape fill.
- Earthworks.
- Cut and replace.
- Moving traffic.
- Dig and replace.

### A452C

- A452 road realignment.

### **Sublot 5S**

#### Coleshill Heath Road

- Landscape fill.
- Excavation.
- Pile cropping.
- Stockpile and haul road management.
- Culvert works at far side of site.

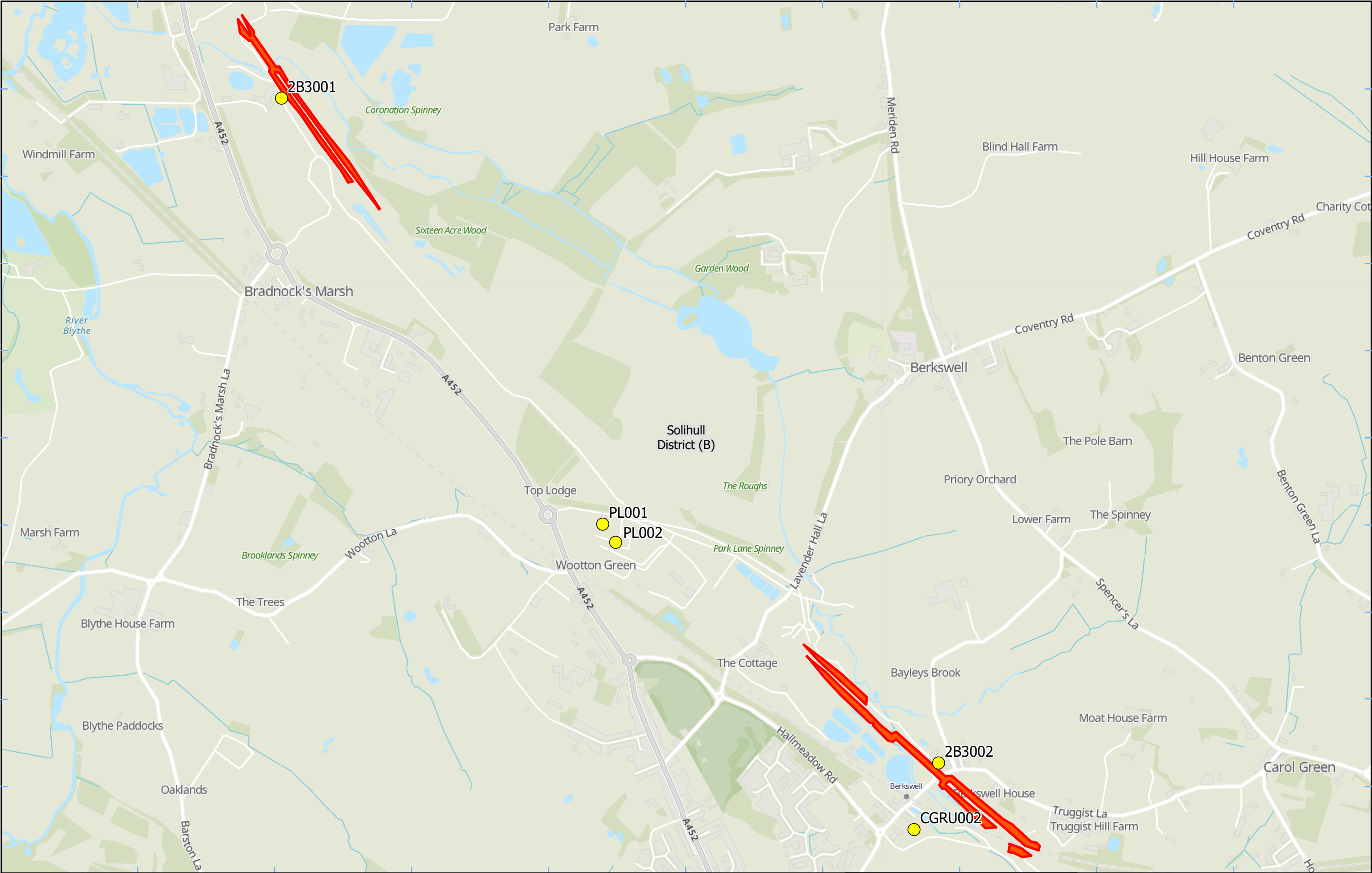
#### Coleshill Heath Road Underbridge

- Excavation.
- Pile cropping.
- Ongoing stockpile and haul road management.
- Piling.
- Technical backfill.

- 1.1.5 Ten (10) dust monitors are installed around these worksites, where works are underway. These sites returned a low to medium dust risk rating.
- 1.1.6 Dust monitoring locations and results are presented in Appendix B, Table 1, together with line charts of monthly data from the dust monitors presented in Figure 4. All continuous dust monitoring is undertaken using indicative monitors. Despite being Environment Agency (MCERTS) certified, indicative monitors carry a higher level of uncertainty than reference monitors, and therefore cannot be strictly compared with Air Quality Standards for human health and the environment. The purpose of the monitoring undertaken is to ensure the effectiveness of the on-site mitigation.
- 1.1.7 The trigger level for PM<sub>10</sub> concentrations of 190 µg/m<sup>3</sup>, over a 1-hour period, in accordance with the updated guidance document '*Guidance on Monitoring in the Vicinity of Demolition and Construction Sites – (October 2018)*' has been applied.
- 1.1.8 Details of the trigger alert investigations and remediations are presented in Appendix B, Table 2.
- 1.1.9 Data capture was below 90% for multiple monitors due to:
- Monitor BIS001 – A monitor swap out is scheduled for 12th June 2025.
  - Monitor BBE001 – A field calibration was done on 16th May 2025, a lab calibration monitor swap out was done on 23rd May 2025, and a fault investigation site visit was done on 9th June 2025. A site visit is to be scheduled to resolve the technical issues.
- 1.1.10 There were no (0) complaints received during this reporting period (May 2025).

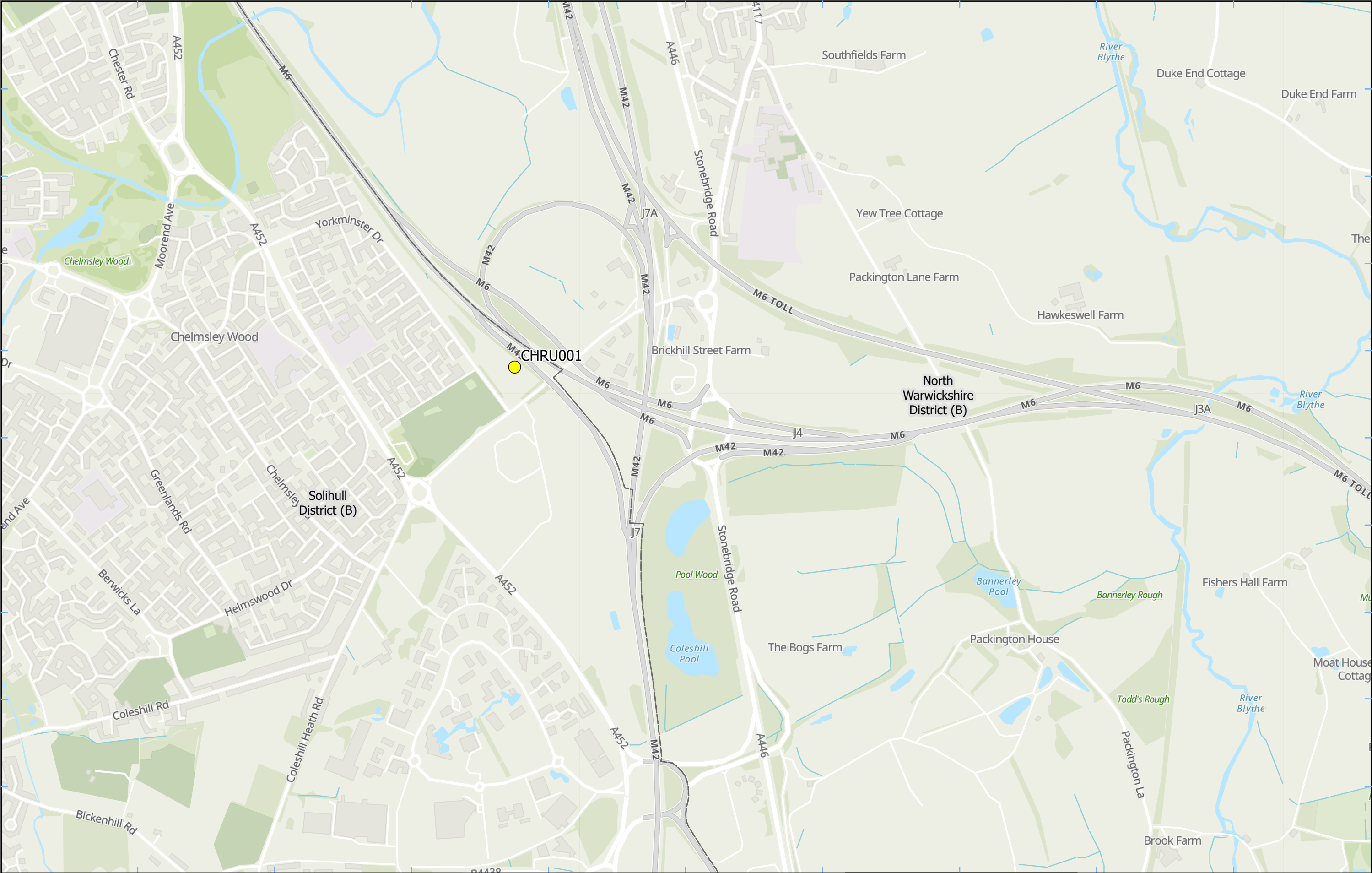
# Appendix A – Worksites and Monitoring Locations

Figures 1-3: Worksites and Monitoring Locations within SMBC



<b>Legend</b> Dust Monitor Worksite District Borough Unitary Boundaries	Map Number	 HS2 Ltd accept no responsibility for any circumstances, which arise from the reproduction of this map after alteration, amendment or abbreviation or if it is issued in part or issued incomplete in any way.  Scale at A3: 1:12,000  Metres Date: 02/04/25
	Map Name <b>Worksite and Monitoring Locations In SMBC (Sheet 1)</b>	
	Solihull Metropolitan Borough	
Service Layer Credits: GB Topographic: Contains OS data © Crown Copyright and database right 2025 Contains data from OS Zoomstack	Doc Number:	





<b>Legend</b> Dust Monitor District Borough Unitary Boundaries	Map Number	 HS2 Ltd accept no responsibility for any circumstances, which arise from the reproduction of this map after alteration, amendment or abbreviation or if it is issued in part or issued incomplete in any way. 
	Map Name	
	Service Layer Credits: GB Topographic: Contains OS data © Crown Copyright and database right 2023 Contains data from OS Zoomstack	Monitoring Locations In SMBC (Sheet 2)
	Solihull Metropolitan Borough	Doc Number: <span style="float: right;">Date: 26/03/24</span>



**Legend**

 Dust Monitor

 District Borough Unitary Boundaries

Service Layer Credits: GB Topographic: Contains OS data © Crown Copyright and database right 2023  
Contains data from OS Zoomstack

Map Number

Map Name

**Monitoring Locations  
In SMBC (Sheet 3)**

**Solihull Metropolitan Borough**



HS2 Ltd accept no responsibility for any circumstances, which arise from the reproduction of this map after alteration, amendment or abbreviation or if it is issued in part or issued incomplete in any way.

Registered in England. Registration number 06791686.  
Registered office: 2 Snowhill, Queensway,  
Birmingham B4 6GA.

© Crown copyright and database rights 2024.  
Ordnance Survey Licence Number 100049190.

**Doc Number:**



**Scale at A3: 1:10,000**



Metres

**Date: 11/03/24**



## Appendix B – Dust Monitoring Results

Table 1: Dust Monitoring Locations and Results

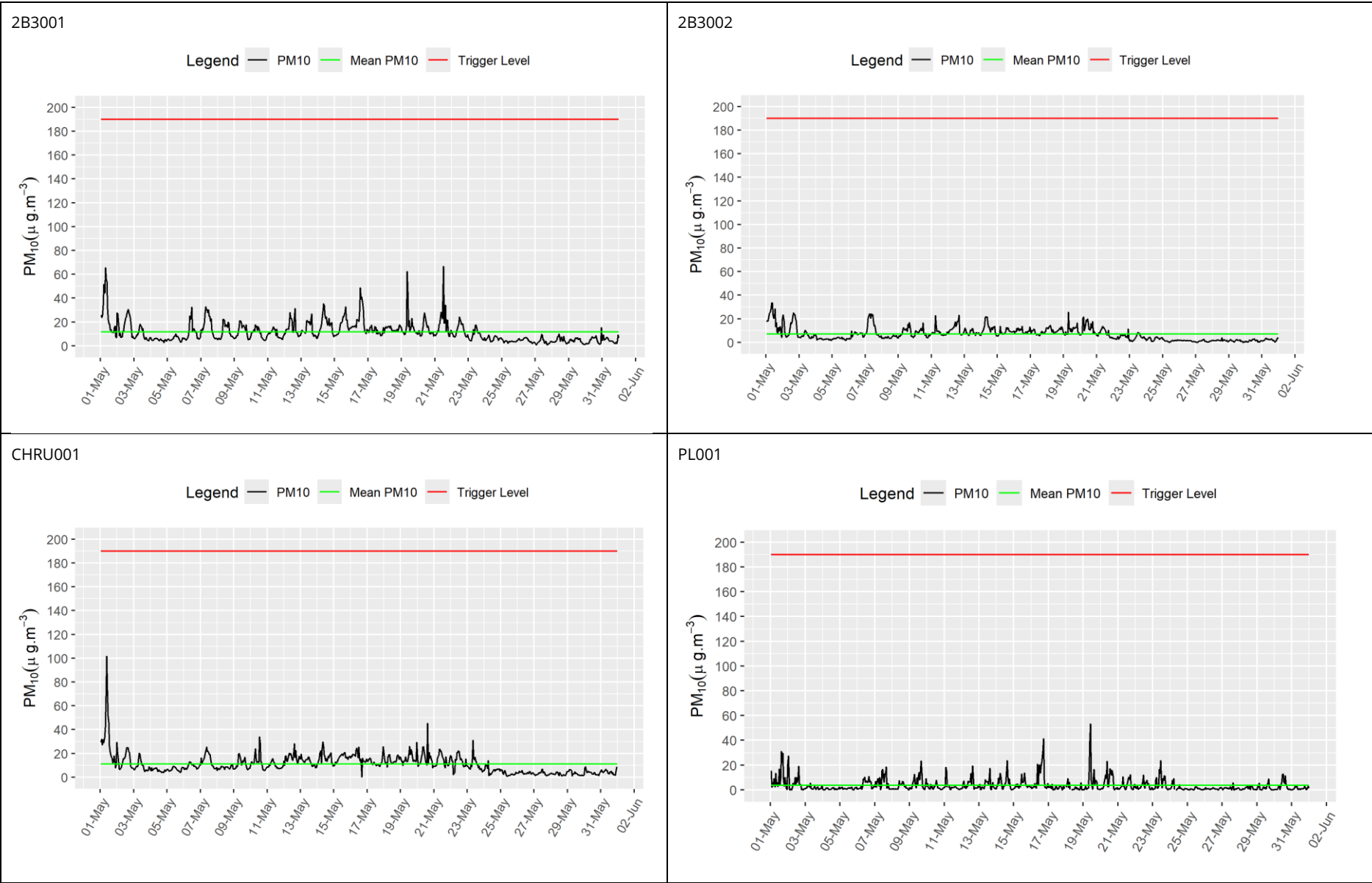
Monitoring site ID	Coordinates (X,Y)	Location description	Dust risk rating for site	Monitoring site active during period	Change to site since previous period report	Mean 1-hour PM <sub>10</sub> concentration (µg/m <sup>3</sup> )	Minimum 1-hour PM <sub>10</sub> concentration (µg/m <sup>3</sup> )	Maximum 1-hour PM <sub>10</sub> concentration (µg/m <sup>3</sup> )	Number of 1-hour periods exceeding trigger level of 190 µg/m <sup>3</sup>	Data capture Month (%)
2B3001	422322, 280034	Sublot 2B3, at Marsh Farm	M	Yes	No	11.5	0.8	66.6	0	100.0
2B3002	424601, 277729	Sublot 2B3, at Cherry Tree Cottage	M	Yes	No	7.0	0.1	33.6	0	99.7
CHRU001	419300, 286793	Bluebell Drive, Coleshill Heath Road Underbridge	M	Yes	No	11.1	0.2	101.5	0	100.0
PL001	423436, 278557	Park Lane	M	Yes	No	3.7	0.1	53.3	0	97.6
PL002	423481, 278494	Final Home, Park Lane	M	Yes	No	8.2	0.2	63.7	0	100.0
DLE001	421035, 281818	Diddington Lane	M	Yes	No	9.8	0.7	53.8	0	100.0
DLE002	421139, 282222	Hampton Hill Farmhouse	M	Yes	No	23.8	0.4	2580.3	10	100.0
BIS001	420284, 283503	Hollywell Brook	M	Yes	No	-	-	-	0	-
CGRU002	424516, 277498	Annora House	M	Yes	No	8.4	0.1	42.3	0	100.0

Monitoring site ID	Coordinates (X,Y)	Location description	Dust risk rating for site	Monitoring site active during period	Change to site since previous period report	Mean 1-hour PM <sub>10</sub> concentration (µg/m <sup>3</sup> )	Minimum 1-hour PM <sub>10</sub> concentration (µg/m <sup>3</sup> )	Maximum 1-hour PM <sub>10</sub> concentration (µg/m <sup>3</sup> )	Number of 1-hour periods exceeding trigger level of 190 µg/m <sup>3</sup>	Data capture Month (%)
BBE001	421656, 281313	Patrick Farmhouse	M	Yes	No	14.8	1.9	62.6	0	72.7

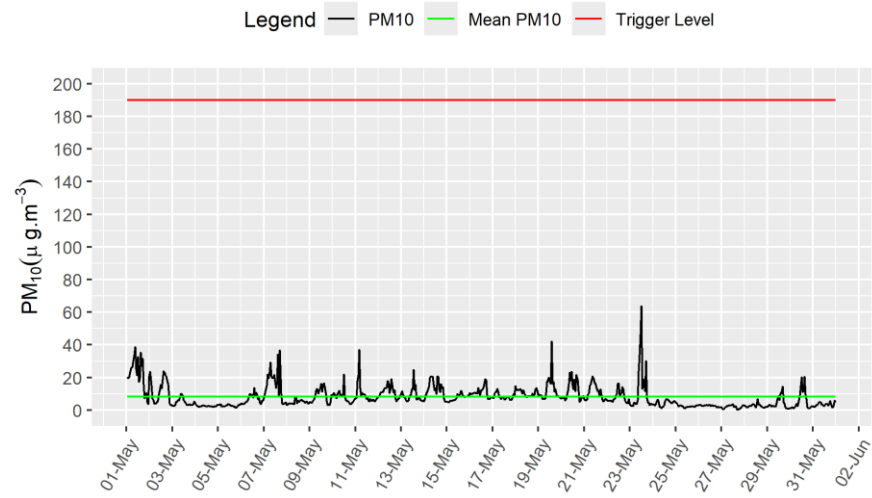
Table 2: Summary of exceedances during period (May 2025)

Monitoring site ID	Period exceeding trigger level	Investigation	Outcomes / Resolution / Remedial measures implemented
DLE002	<p>21/05/2025: 14:01 – 15:00; 383.9 µg/m<sup>3</sup> 15:01 – 16:00; 1876.5 µg/m<sup>3</sup> 16:01 – 17:00; 352.4 µg/m<sup>3</sup></p> <p>24/05/2025: 10:01 – 11:00; 622.9 µg/m<sup>3</sup> 11:01 – 12:00; 1544.7 µg/m<sup>3</sup> 12:01 – 13:00; 771.5 µg/m<sup>3</sup> 13:01 – 14:00; 392.5 µg/m<sup>3</sup> 14:01 – 15:00; 1091.2 µg/m<sup>3</sup> 15:01 – 16:00; 2580.3 µg/m<sup>3</sup> 16:01 – 17:00; 1838.1 µg/m<sup>3</sup></p>	There were no works occurring near to the monitor, so these exceedances were not thought to be associated with current HS2 construction works.	N/A

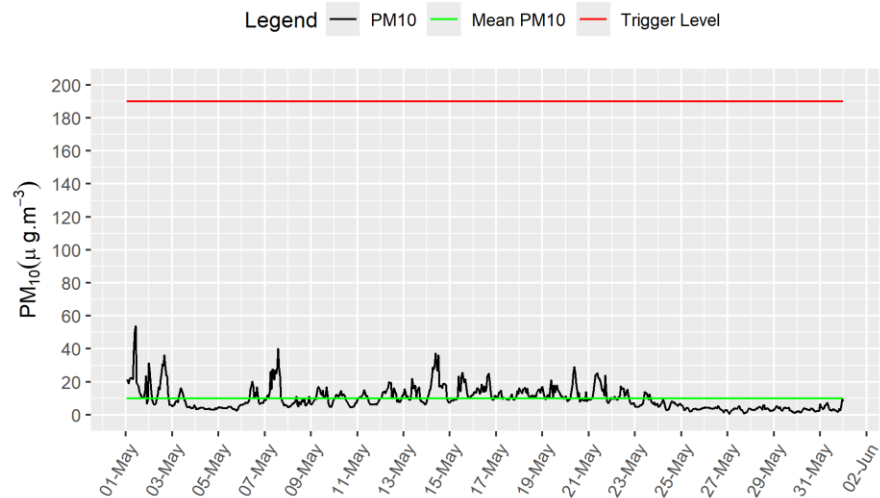
Figure 4: Construction dust 1-hour mean indicative PM<sub>10</sub> concentration for all dust monitors



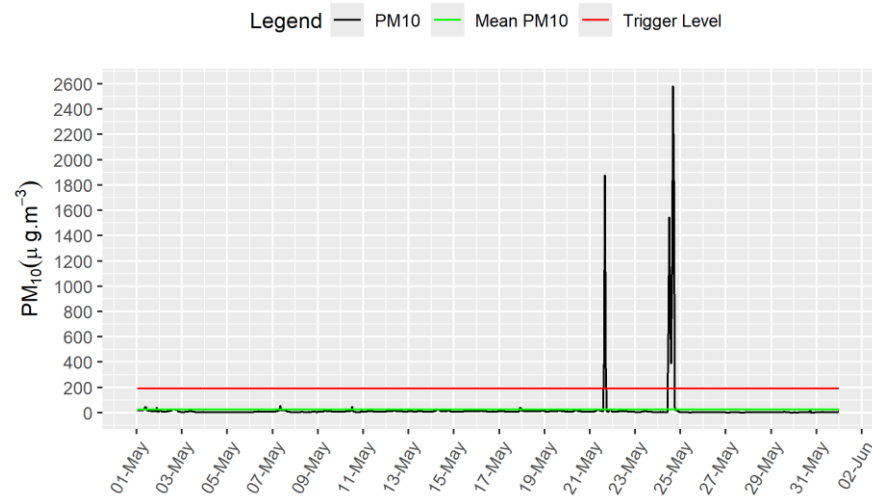
PL002



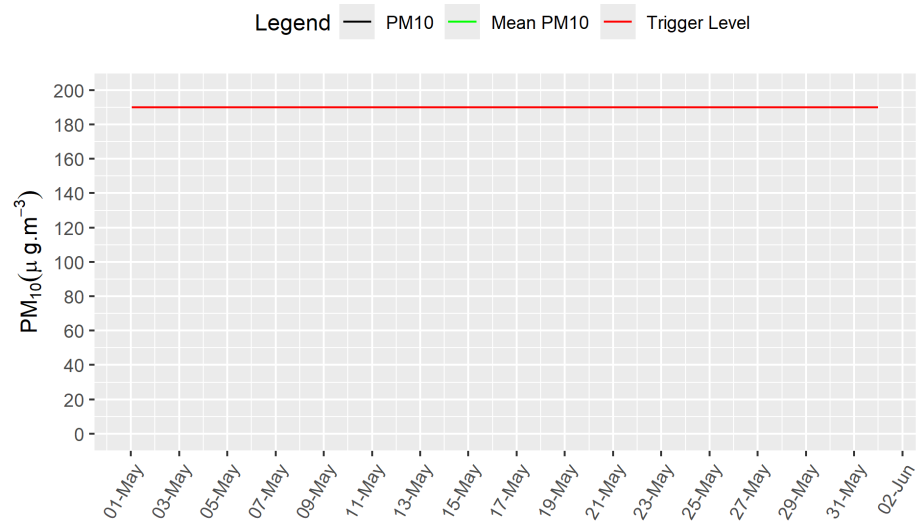
DLE001



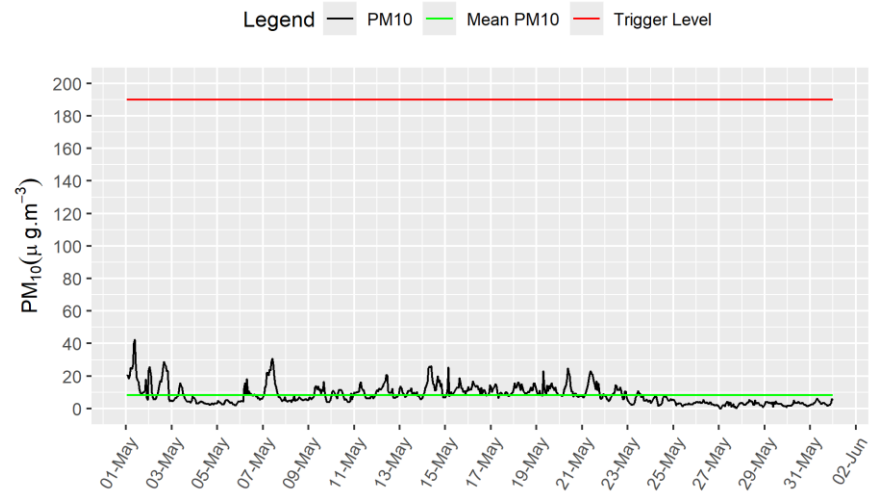
DLE002



BIS001



CGRU002



BBE001

