



# Elgin - local data profile

July 2025

## Contents:

- (1) Indicators for policy investment themes
- (2) Demographics and deprivation
- (3) Data and sources



# About this document

**This document, produced by MHCLG in collaboration with ONS, presents high-level data to support the Plan for Neighbourhoods programme. It is intended to support Neighbourhood Boards in both identifying and evidencing local needs or trends. It does not make policy recommendations.**

---

## Background

- On 4 March 2025, the UK Government announced the launch of the Plan for Neighbourhoods. This will provide up to £20 million in support and funding for 75 places across the UK over the next decade.
- Data is presented across broad themes that Neighbourhood Boards may consider addressing through the programme.
- This pack does not take account of the implementation of current national or local policy interventions.

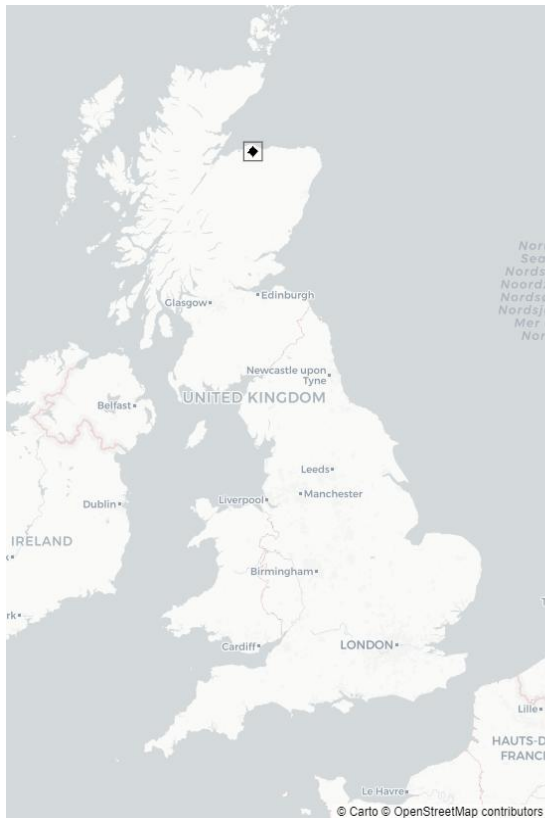
## Data caveats

- The data sources in this pack are the latest available as of 1st April 2025. In collaboration with the Office for National Statistics (ONS), we have derived metrics at the Localities (2022) geographical level, where this data was not previously available. Estimates are at Locality (2022) level unless stated otherwise. **These are experimental estimates for small levels of geography that may be more volatile or have higher levels of uncertainty, which should be taken into consideration when interpreting the data.** The metrics in this pack do not account for any boundary request changes submitted by places.
- Due to data availability, estimates at council area level are based on geographic boundaries as of 2024. Elgin is within the council area of Moray.

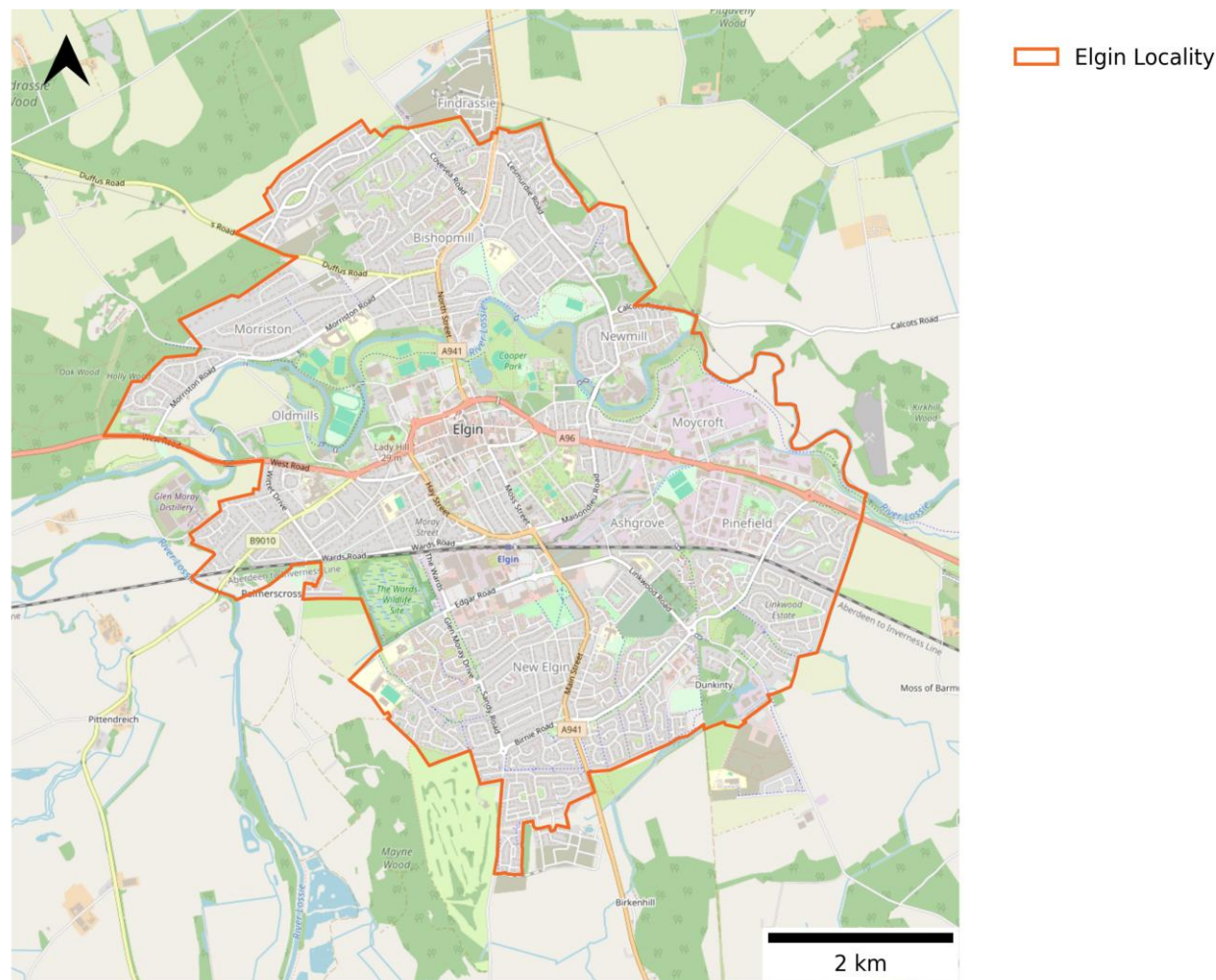


# Map of Elgin

**This data pack defines a neighbourhood's boundary based on the definition of Localities (2022), unless stated otherwise. This reflects the default approach for the Plan for Neighbourhoods. The metrics in this pack do not account for any boundary changes submitted by the Neighbourhood Boards.**



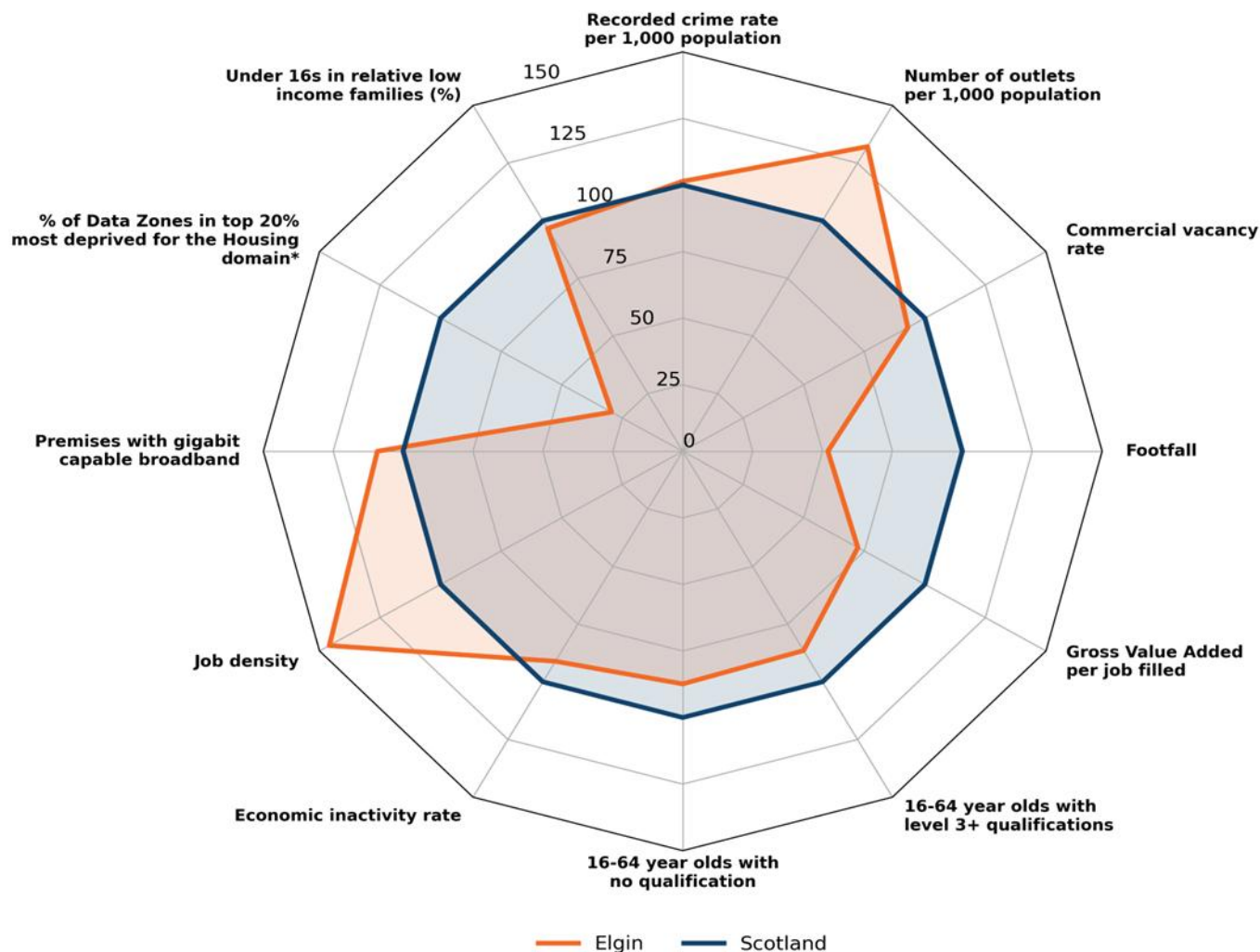
Source: [National Records of Scotland, 2024](#)





# Overview of indicators

This page provides an overview of how the Locality's indicators (listed in the Annex) for policy investment themes fare against national averages.



The chart on the left shows how Elgin's indicators (orange) fare against national averages (dark blue). Locality values have been scaled relative to the national averages which were set to 100.

## How to read the chart:

1. Compare the overall shape of the Locality data points to the national average shape.
2. The closer a Locality marker is to value 100 on the chart, the closer it is to the national average. For example, a Locality value of 150 means that it is 50% higher than the national average.

\* Data Zones are defined [here](#).



# Indicators for policy investment themes

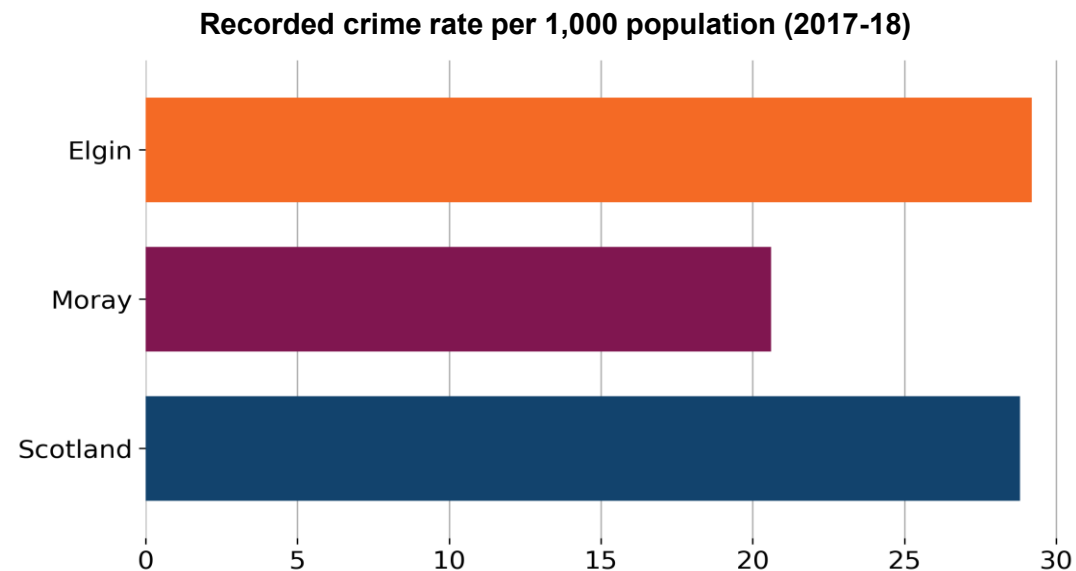


## Safety and Security

Indicator	Elgin	Moray	Scotland
Recorded crime rate per 1,000 population (2017-18)	29.2	20.6	28.8

Recorded crime by type per 1,000 population	Moray	Scotland
Crimes against society (2023-24)	8.4	11.3
Crimes of dishonesty (2023-24)	10.6	20.4
Damage and reckless behaviour (2023-24)	6.7	7.5
Non-sexual crimes of violence (2023-24)	11.9	13.1
Sexual crimes (2023-24)	3.6	2.7

**Note:** Rates were calculated using 2022 mid-year population estimates due to data availability.



Source: [Scottish Government, 2020](#)



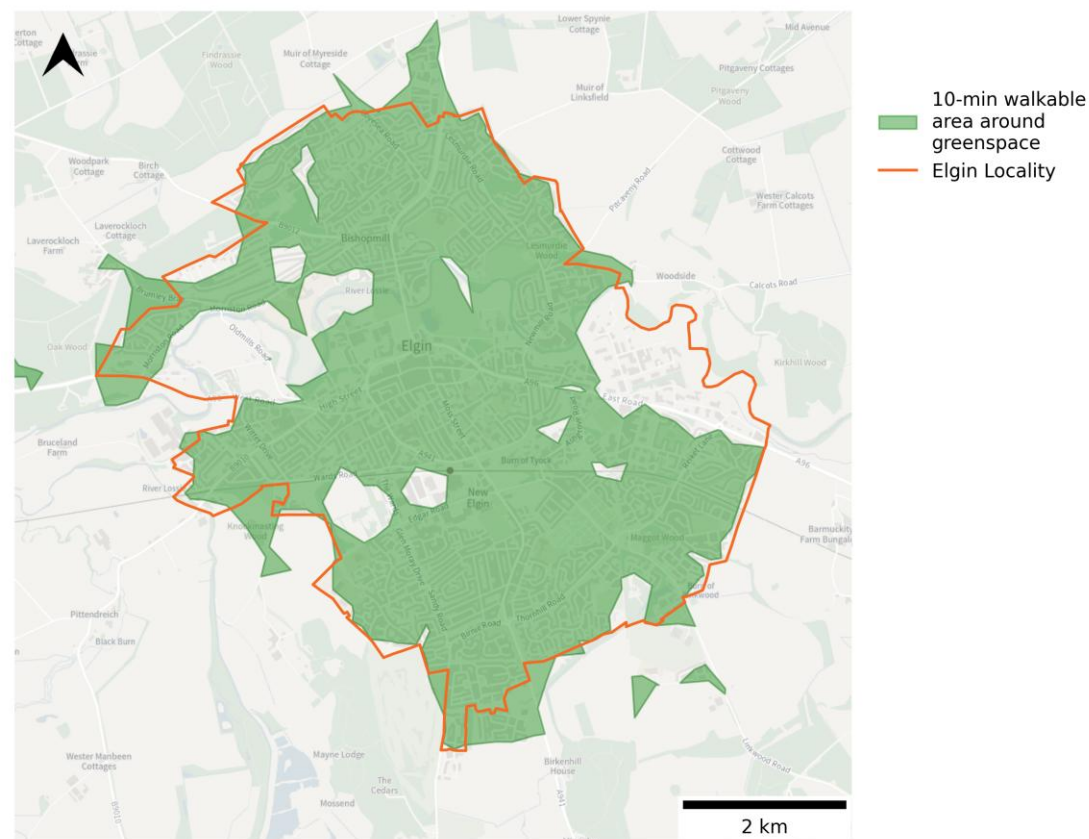
# High Streets, Heritage and Regeneration

Indicator	Elgin	Scotland
Number of outlets (takeaways, restaurants, clubs, bars, pubs, fitness facilities and sport clubs) per 1,000 population (June 2025)	3.7	2.8
Commercial vacancy rate* (%) (June 2025)	10.6	11.4
Footfall index** based on Virgin Media O2 mobile phone data (April 2022 to March 2023)	51.9	100.0

\* The commercial vacancy rate represents the total number of retail and leisure units that are vacant but in an occupiable state, as a percentage of the total number of business units in a destination. Where units are under renovation or demolished, they are not classed as vacant. Commercial vacancy rate is based on data from Green Street. They produce a separate measure of vacancy rate following a different methodology which may differ to that included here.

\*\* Anonymised and aggregated mobile network data by Virgin Media O2. Footfall is defined as the average daily number of outbound journeys (not including journeys to home) within the Locality over the period April 2022-March 2023. The mean average footfall of Localities in Scotland with populations similar to Elgin (+/- 30%) has been standardised to an index of 100. The number for Elgin is scaled relative to this average.

10-minute walking distance to greenspace access points in Elgin (2025)



Source: [OpenStreetMap, 2025](#); [Ordnance Survey, 2025](#)

**Note:** 10-minute walkable area is created using OpenStreetMap walking network and OS Greenspace Access Points, excluding: Allotments or Community Growing Spaces, Cemeteries, Religious Grounds, and Golf Courses.





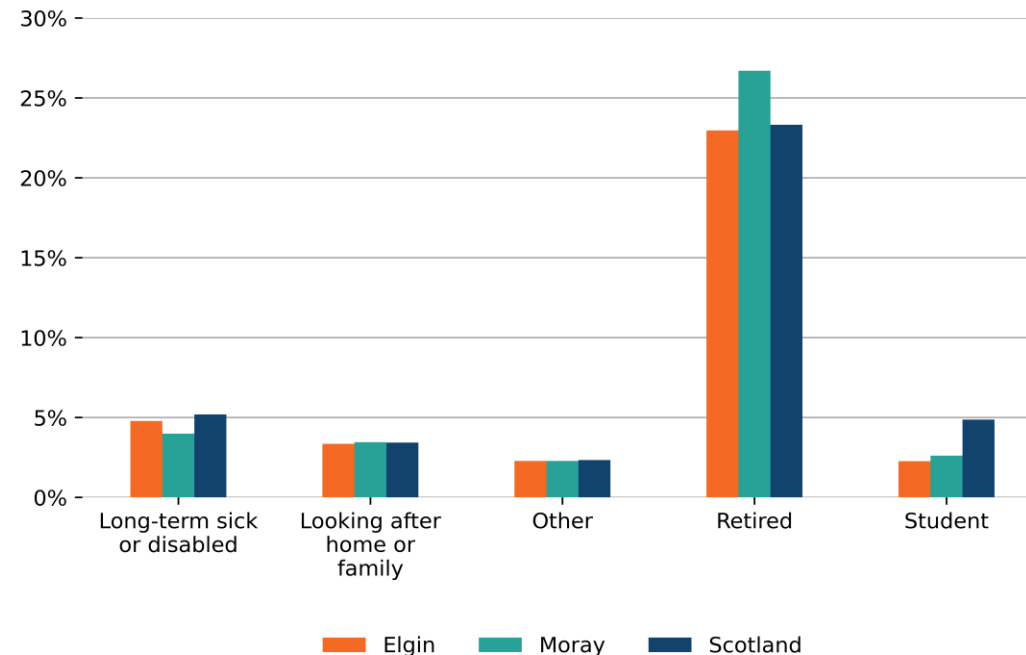
## Education, Work, Productivity and Skills

Indicator	Elgin	Moray	Scotland
Gross Value Added per job filled (£) (2022)	42,528	57,332	58,796
16-64 year olds with level 3+ qualifications* (%) (2022)	43.3	44.1	50.1
16-64 year olds with no qualifications (%) (2022)	9.0	8.8	10.3
Unemployment rate (age 16+) (%) (2022)	3.3	3.6	4.3
Economic inactivity rate (age 16+) (%) (2022)	35.6	39.0	39.1
Job density** (2022)	1.08	0.67	0.74

\* Proportion of 16 to 64 year olds with a [level 3 qualification or above](#), such as HNC, HND, SVQ Level 4 or equivalent, degree (BA, BSc) or higher degree (MA, MSc, PhD), SVQ Level 5 or equivalent.

\*\* [Job density](#) is defined as the number of jobs in an area divided by the resident population aged 16-64 in that area. For example, a job density of 1.0 would mean that there is one job for every resident aged 16-64.

Population (16+) that are economically inactive, by reason (%) (2022)



Source: [Scotland's Census, 2022](#)

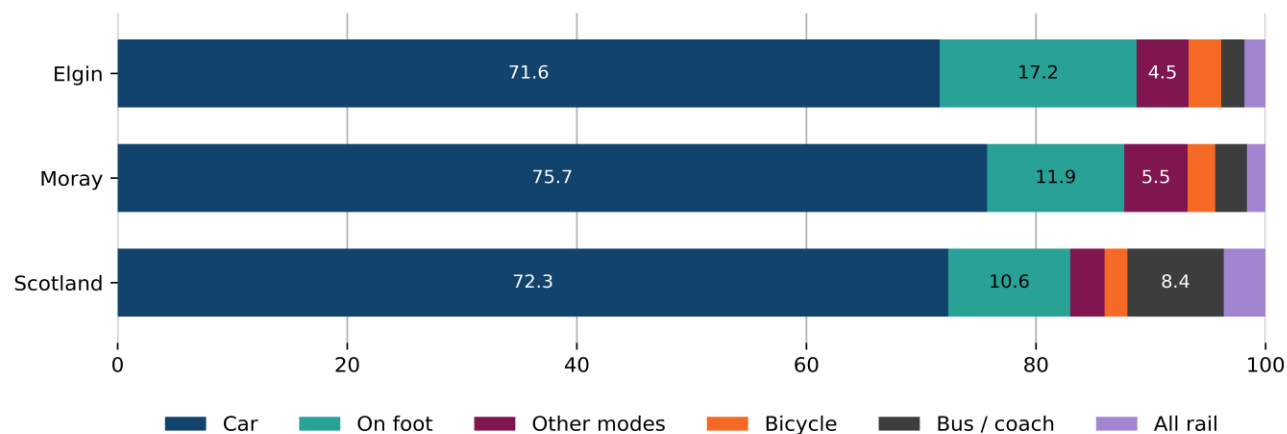




## Transport and Connectivity

Indicator	Elgin	Moray	Scotland
Premises with gigabit capable broadband (%) (July 2024)	83	53	76

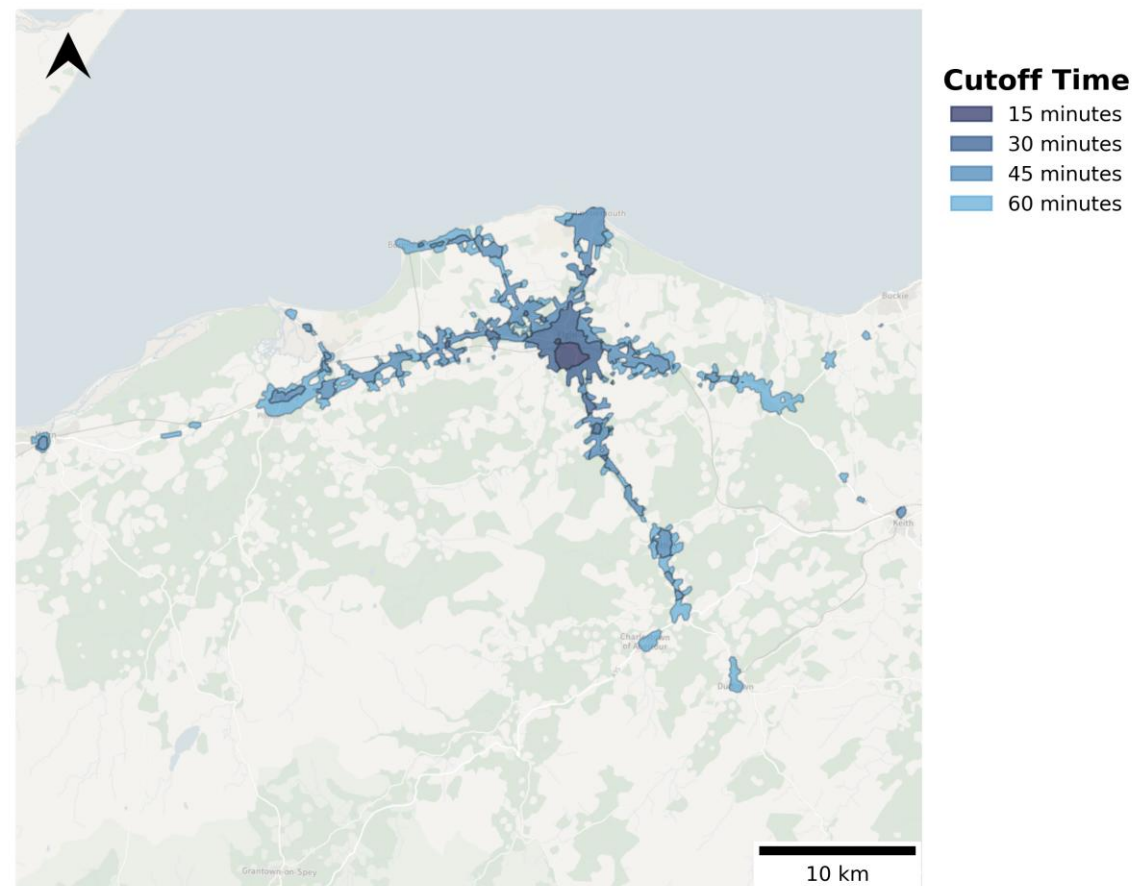
Method of travel to work (%) (2022)



Source: [Scotland's Census, 2022](#)

**Note:** We have excluded the “Work mainly at or from home” category from this chart to make it easier to clearly see the methods used to travel to work. Percentages do not include those working from home. Missing labels on the bars represent a percentage of less than 4%.

Public transport accessibility by journey time (2022) from Elgin train station, between 7:15am and 9:15am



Source: [ONS, 2023](#)

**Note:** Data is from 15th November 2022



# Demographics and deprivation

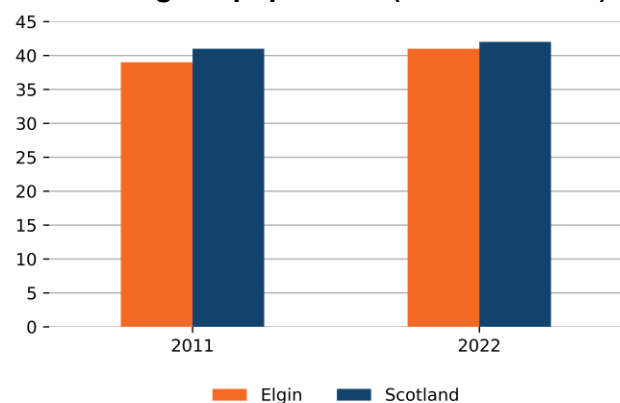


# Demographics

## Headlines:

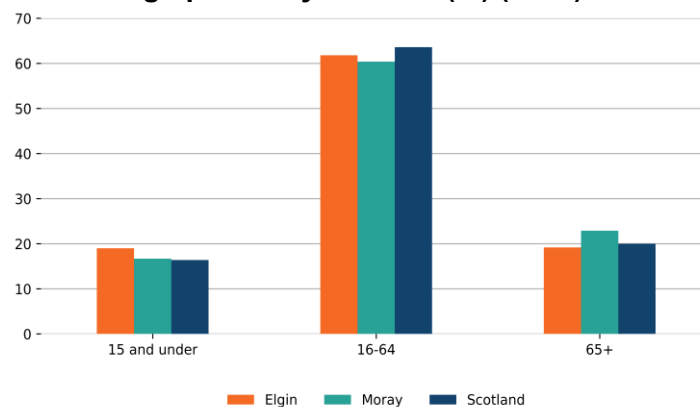
- In 2022, the median age in **Elgin was 41 years**. The median age for Scotland was 42. The median age for Moray was 46 years. The map on the right shows the average median age within Elgin at [2011 Data Zone](#) level.
- The median age in Elgin **increased** by 2 years between 2011 and 2022. For context, the median age in Scotland increased by 1 year over the same period (*see bottom left chart below*).
- In 2022, Elgin had a population **of 24,617**. Between 2011 and 2022, Elgin's **population increased by 6.4%**. For context, the population decreased by 0.1% in Moray and increased by 2.7% in Scotland.
- In 2022, 19.0% of people in Elgin were under 16 years old, and 19.2% were aged 65 and over. For context, the Scotland average was 16.4% and 20.0%, respectively (*see bottom right chart below*).
- Across Elgin in 2022, 97.0% of people identified with a White ethnic group, 1.6% as Asian, Asian British or Asian Welsh, 0.3% as Black, Black British, Black Welsh, Caribbean or African, 0.8% with Mixed or Multiple ethnic groups, and 0.5% with other ethnic groups.
- In 2019-2021, healthy life expectancy in Moray was estimated to be 62.7 years for females and 62.4 years for males. For context, it was estimated to be 61.1 and 60.4 years in Scotland respectively.

Median age of population (2011 and 2022)



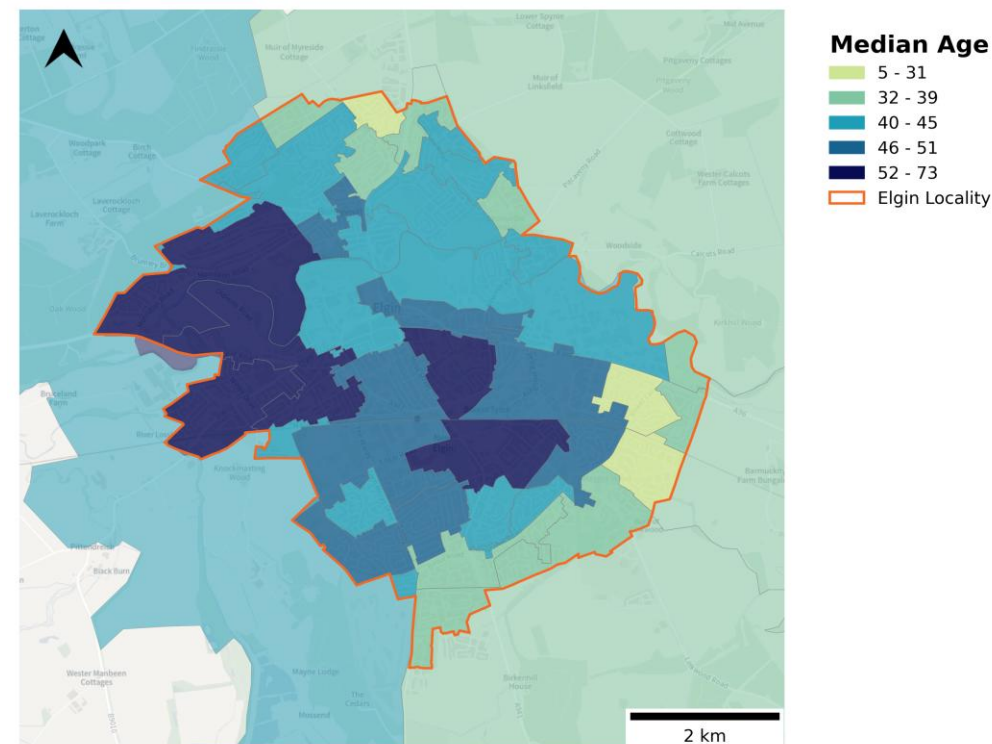
Source: [NRS Census, 2022](#); [NRS Census, 2011](#)

Age profile by location (%) (2022)



Source: [NRS Census, 2022](#)

Median age in Elgin at Data Zone level (2022)



Source: [NRS, 2024](#)

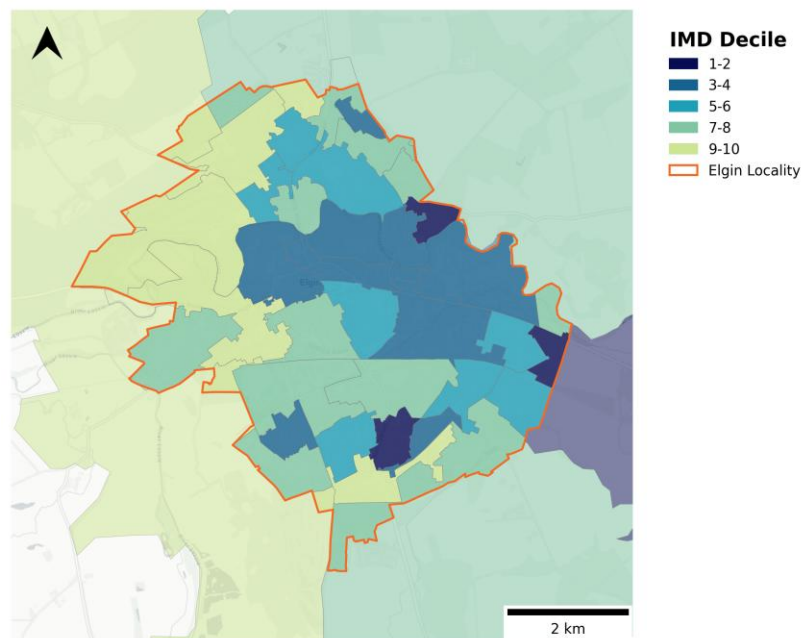


# Deprivation

## Headlines:

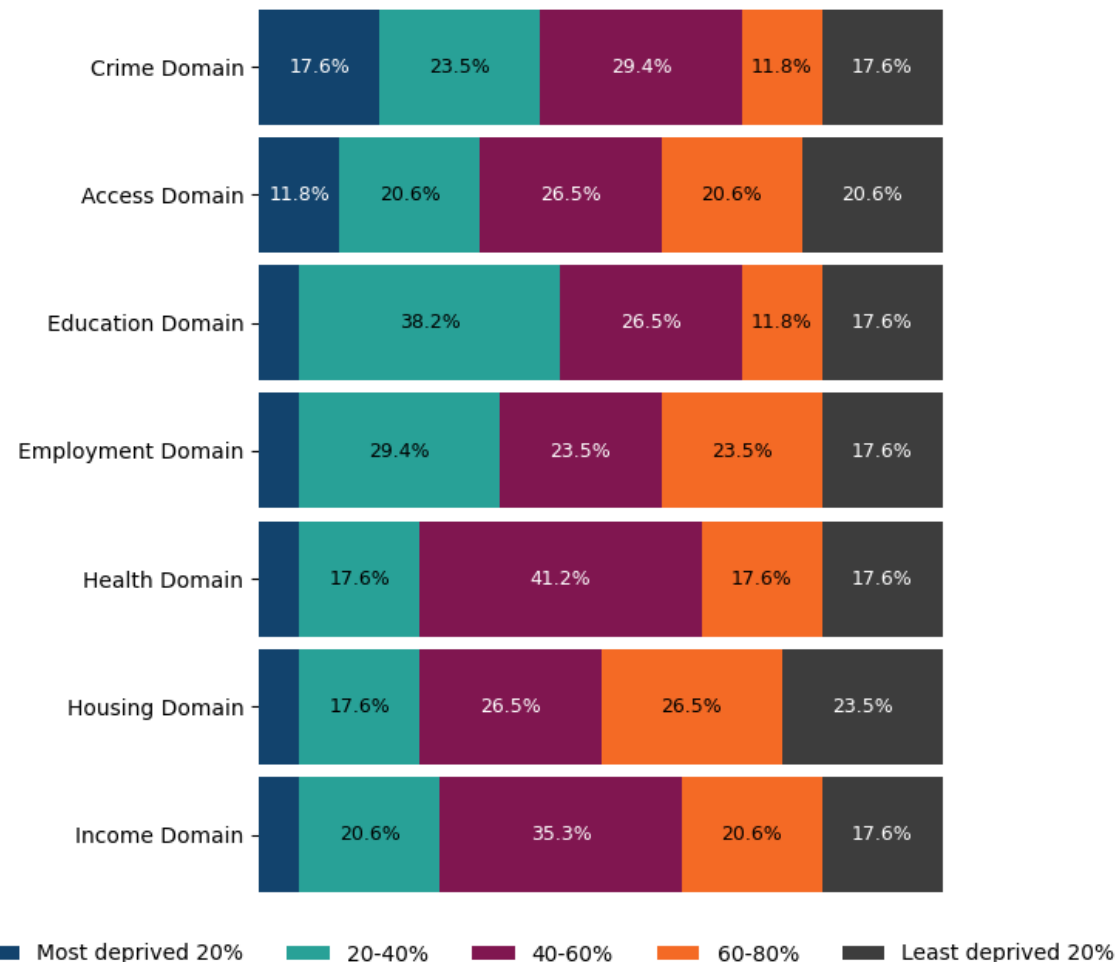
- In 2020, **over 10%** of Data Zones in Elgin were in the **top 20% most deprived in Scotland in terms of Crime Domain, and Access Domain.**
- Access Domain (8.8%), Crime Domain (8.8%), Education Domain (2.9%), Employment Domain (2.9%), Health Domain (2.9%) and Income Domain (2.9%)** were the domains that had the largest proportion of Elgin's Data Zones in the **top 10% most deprived in Scotland.**
- In 2022-23, **17.2%** of under-16s in Elgin lived in **relative low income families**. This is lower than the Scotland (17.8%) average.

## Deprivation levels across Data Zones within Elgin by decile (2020) (Decile 1 = Top 10% most deprived in Scotland)



Source: [Scottish Government, 2020](#)

## Deprivation levels (%) across Data Zones within Elgin, compared to the Scotland average (2020)



Source: [Scottish Government, 2020](#)

**Note:** Missing labels on the bars represent a percentage of less than 7%.

**Note:** All Data Zones that fall within the Locality boundary are included in the overall Locality calculations. This includes Data Zones that fall partly outside the boundary.



# Annex - Data and sources



## Data and sources

Indicator	Slide	Source
Recorded crime rate per 1,000 population (2017-18)	Safety and Security	<a href="https://www.gov.scot/publications/scottish-index-of-multiple-deprivation-2020v2-ranks/">https://www.gov.scot/publications/scottish-index-of-multiple-deprivation-2020v2-ranks/</a>
Recorded crime by type per 1,000 population (2023-24)	Safety and Security	<a href="https://www.gov.scot/publications/recorded-crime-scotland-2023-24/documents/">https://www.gov.scot/publications/recorded-crime-scotland-2023-24/documents/</a>
Number of outlets (takeaways, restaurants, clubs, bars, pubs, fitness facilities and sport clubs) per 1,000 population (June 2025)	High Streets, Heritage and Regeneration	Local Data Company
Commercial vacancy rate (%) (June 2025)	High Streets, Heritage and Regeneration	Local Data Company
Footfall index based on Virgin Media O2 mobile phone data (April 2022 to March 2023)	High Streets, Heritage and Regeneration	Anonymised and aggregated mobile network data by Virgin Media O2
10-minute walking distance to greenspace access points (2025)	High Streets, Heritage and Regeneration	MHCLG analysis based on Ordnance Survey Open Greenspace data and OpenStreetMap
Gross Value Added (£) per job filled (2022)	Education, Work, Productivity and Skills	<a href="https://www.ons.gov.uk/economy/grossvalueaddedgva/datasets/ukgvaandproductivityestimatesforothergeographies">https://www.ons.gov.uk/economy/grossvalueaddedgva/datasets/ukgvaandproductivityestimatesforothergeographies</a>
16-64 year olds with level 3+ qualifications (%) (2022)	Education, Work, Productivity and Skills	<a href="https://www.scotlandscensus.gov.uk/search-the-census#/search-by">https://www.scotlandscensus.gov.uk/search-the-census#/search-by</a>
16-64 year olds with no qualifications (%) (2022)	Education, Work, Productivity and Skills	<a href="https://www.scotlandscensus.gov.uk/search-the-census#/search-by">https://www.scotlandscensus.gov.uk/search-the-census#/search-by</a>
Unemployment rate (age 16+) (%) (2022)	Education, Work, Productivity and Skills	<a href="https://www.scotlandscensus.gov.uk/census-results/at-a-glance/labour-market/">https://www.scotlandscensus.gov.uk/census-results/at-a-glance/labour-market/</a>
Economic inactivity rate (age 16+) (%) (2022)	Education, Work, Productivity and Skills	<a href="https://www.scotlandscensus.gov.uk/census-results/at-a-glance/labour-market/">https://www.scotlandscensus.gov.uk/census-results/at-a-glance/labour-market/</a>



## Data and sources

Indicator	Slide	Source
Job density (2022)	Education, Work, Productivity and Skills	<a href="https://www.ons.gov.uk/employmentandlabourmarket/peopleinwork/employmentandemployeetypes/adhocs/2877jobdensity2022byselectedbuiltupareas2024">https://www.ons.gov.uk/employmentandlabourmarket/peopleinwork/employmentandemployeetypes/adhocs/2877jobdensity2022byselectedbuiltupareas2024</a>
Population (16+) that are economically inactive, by reason (%) (2022)	Education, Work, Productivity and Skills	<a href="https://www.scotlandscensus.gov.uk/census-results/at-a-glance/labour-market/">https://www.scotlandscensus.gov.uk/census-results/at-a-glance/labour-market/</a>
Premises with gigabit capable broadband (%) (July 2024)	Transport and Connectivity	<a href="https://www.ofcom.org.uk/phones-and-broadband/coverage-and-speeds/connected-nations-2024">https://www.ofcom.org.uk/phones-and-broadband/coverage-and-speeds/connected-nations-2024</a>
Method of travel to work (2022)	Transport and Connectivity	<a href="https://www.scotlandscensus.gov.uk/search-the-census#/topics/list?topic=Education,%20labour%20market%20and%20travel%20to%20work&amp;categoryId=6">https://www.scotlandscensus.gov.uk/search-the-census#/topics/list?topic=Education,%20labour%20market%20and%20travel%20to%20work&amp;categoryId=6</a>
Public transport accessibility by journey time from train station/landmark (2022)	Transport and Connectivity	<a href="https://geoportal.statistics.gov.uk/search?q=PRD_ISO&amp;sort=Date%20Created%7Ccreated%7Cdesc">https://geoportal.statistics.gov.uk/search?q=PRD_ISO&amp;sort=Date%20Created%7Ccreated%7Cdesc</a>
Median age (2022)	Demographics	<a href="https://www.scotlandscensus.gov.uk/search-the-census#/search-by">https://www.scotlandscensus.gov.uk/search-the-census#/search-by</a>
Median age (2011)	Demographics	<a href="https://www.scotlandscensus.gov.uk/search-the-census#/search-by">https://www.scotlandscensus.gov.uk/search-the-census#/search-by</a>
Population estimates (2022)	Demographics	<a href="https://www.scotlandscensus.gov.uk/search-the-census#/search-by">https://www.scotlandscensus.gov.uk/search-the-census#/search-by</a>
Population estimates (2011)	Demographics	<a href="https://www.scotlandscensus.gov.uk/search-the-census#/search-by">https://www.scotlandscensus.gov.uk/search-the-census#/search-by</a>
Age profile (2022)	Demographics	<a href="https://www.scotlandscensus.gov.uk/search-the-census#/search-by">https://www.scotlandscensus.gov.uk/search-the-census#/search-by</a>
Ethnicity (2022)	Demographics	<a href="https://www.scotlandscensus.gov.uk/search-the-census#/search-by">https://www.scotlandscensus.gov.uk/search-the-census#/search-by</a>
Healthy Life Expectancy (Males) (2019-2021)	Demographics	<a href="https://www.nrscotland.gov.uk/publications/healthy-life-expectancy-2019-2021/">https://www.nrscotland.gov.uk/publications/healthy-life-expectancy-2019-2021/</a>
Healthy Life Expectancy (Females) (2019-2021)	Demographics	<a href="https://www.nrscotland.gov.uk/publications/healthy-life-expectancy-2019-2021/">https://www.nrscotland.gov.uk/publications/healthy-life-expectancy-2019-2021/</a>
Scottish Index of Multiple Deprivation (2020)	Deprivation	<a href="https://www.gov.scot/publications/scottish-index-of-multiple-deprivation-2020v2-ranks/">https://www.gov.scot/publications/scottish-index-of-multiple-deprivation-2020v2-ranks/</a>
Percentage of under-16s in relative low income families (2022-23)	Deprivation	<a href="https://stat-xplore.dwp.gov.uk/webapi/jsf/login.xhtml">https://stat-xplore.dwp.gov.uk/webapi/jsf/login.xhtml</a>