



# Kirkby - local data profile

July 2025

## Contents:

- (1) Indicators for policy investment themes
- (2) Demographics and deprivation
- (3) Data and sources



# About this document

**This document, produced by MHCLG in collaboration with ONS, presents high-level data to support the Plan for Neighbourhoods programme. It is intended to support Neighbourhood Boards in both identifying and evidencing local needs or trends. It does not make policy recommendations.**

---

## Background

- On 4 March 2025, the UK Government announced the launch of the Plan for Neighbourhoods. This will provide up to £20 million in support and funding for 75 places across the UK over the next decade.
- Data is presented across broad themes that Neighbourhood Boards may consider addressing through the programme.
- This pack does not take account of the implementation of current national or local policy interventions.

## Data caveats

- The data sources in this pack are the latest available as of 1st April 2025. In collaboration with the Office for National Statistics (ONS), we have derived metrics at the Built Up Areas (BUA) (2024) geographical level, where this data was not previously available. Estimates are at BUA (2024) level unless stated otherwise. **These are experimental estimates for small levels of geography that may be more volatile or have higher levels of uncertainty, which should be taken into consideration when interpreting the data.** The metrics in this pack do not account for any boundary request changes submitted by places.
- Lockdown restrictions and the furlough scheme were in place at the time Census 2021 was conducted, which significantly impacted 'travel to work methods' data. As such, the data are not reflective of current commuting patterns. We have therefore used Census 2011 data in the commuter flows table shown in this pack. [Census 2021 employment data](#) may also be impacted by furlough and the timing of Census day (March 2021).
- Due to data availability, estimates at local authority level are based on geographic boundaries as of 2024. Kirkby is within the local authority of Knowsley.

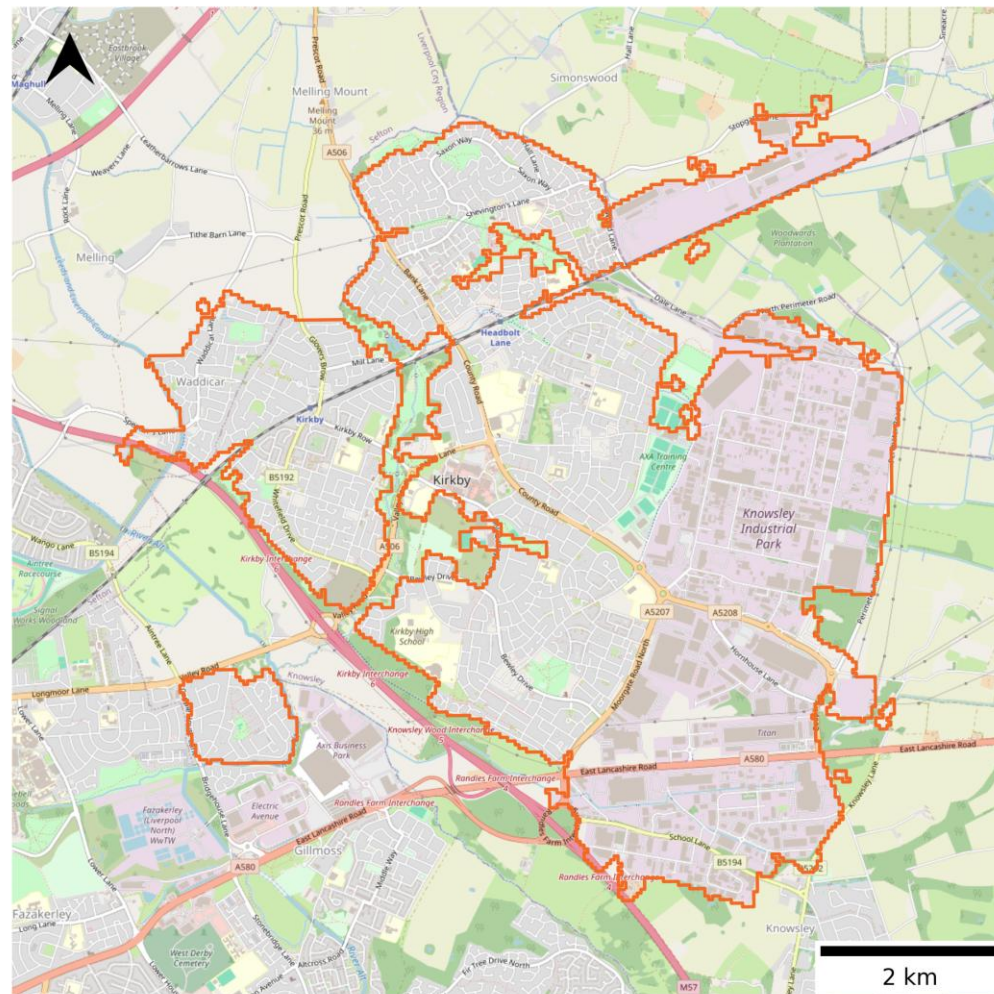


# Map of Kirkby

This data pack defines a neighbourhood's boundary based on the definition of Built Up Areas (BUA, 2024), unless stated otherwise. This reflects the default approach for the Plan for Neighbourhoods. The metrics in this pack do not account for any boundary changes submitted by the Neighbourhood Boards.



Source: [ONS, 2024](#)

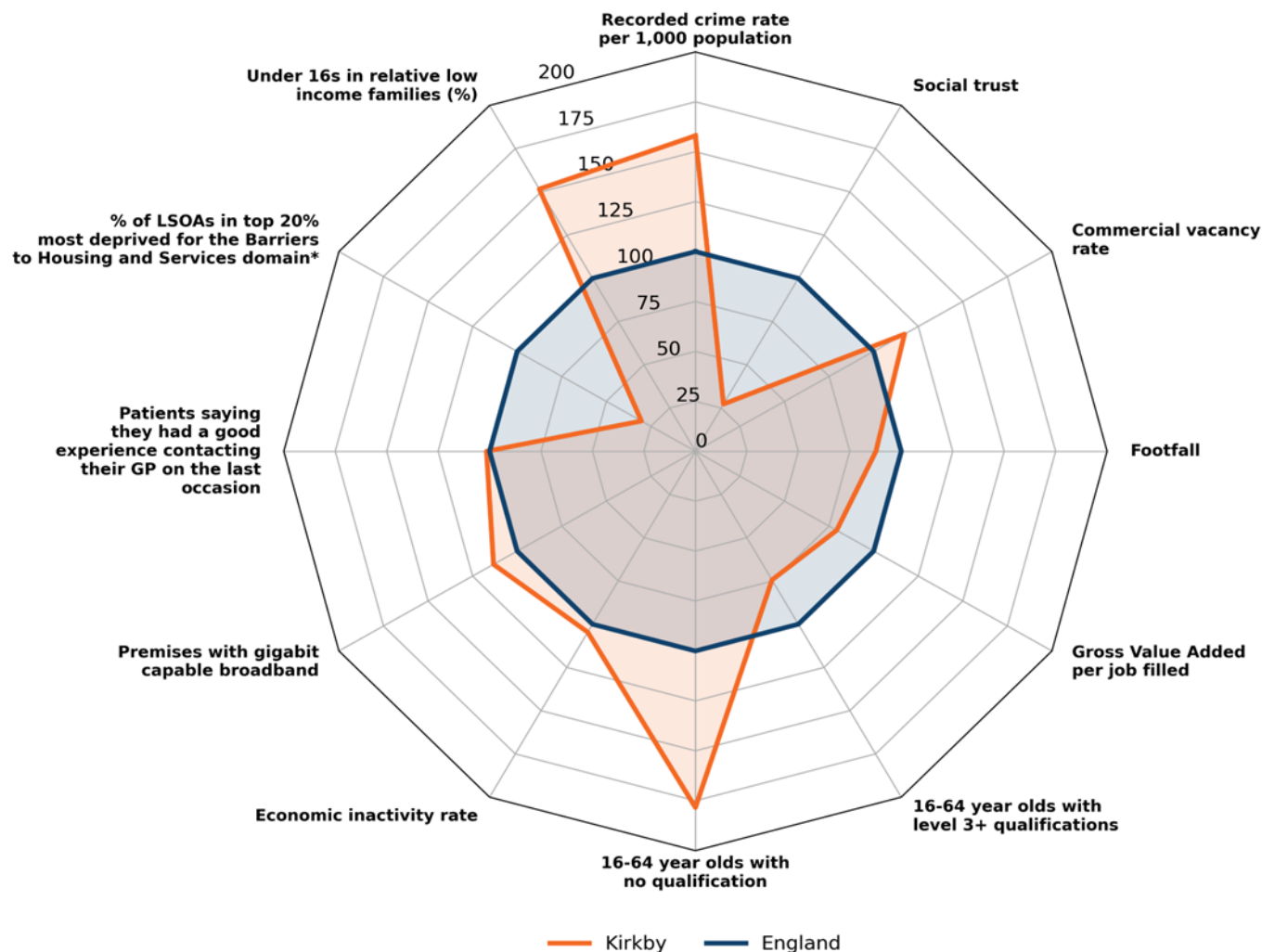


 Kirkby BUA



# Overview of indicators

This page provides an overview of how the BUA's indicators (listed in the Annex) for policy investment themes fare against national averages.



The chart on the left shows how Kirkby's indicators (orange) fare against national averages (dark blue). BUA values have been scaled relative to the national averages which were set to 100.

## How to read the chart:

1. Compare the overall shape of the BUA data points to the national average shape.
2. The closer a BUA marker is to value 100 on the chart, the closer it is to the national average. For example, a BUA value of 150 means that it is 50% higher than the national average.

\* The [Barriers to Housing and Services Domain](#) measures the physical and financial accessibility of housing and local services. The indicators fall into two sub-domains: 'geographical barriers', which relate to the physical proximity of local services, and 'wider barriers' which includes issues relating to access to housing such as affordability and homelessness. A value of 0 indicates none of the [Lower Layer Super Output Areas \(LSOAs\)](#) that intersect the BUA (wholly or partly) are in the top 20% most deprived for the domain within England.



# Indicators for policy investment themes

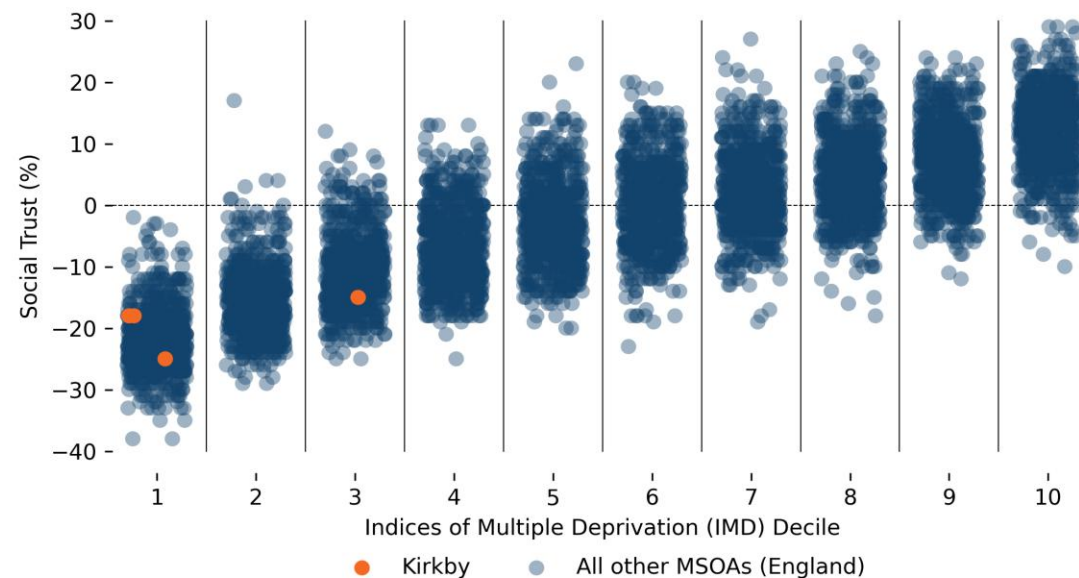


## Safety, Security and Cohesion

Indicator	Kirkby	Knowsley	England
Recorded crime rate per 1,000 population (2022)	121.2	96.8	76.7
Anti-social behaviour per 1,000 population (2024)	9.8	11.1	14.8
Social trust (%) (2023)	-19	-15	-3
Recorded crime by type per 1,000 population	Kirkby	Knowsley	England
Bicycle theft (2024)	0.5	0.4	0.9
Burglary (2024)	2.6	2.3	3.9
Criminal damage and arson (2024)	8.9	9.4	7.1
Drugs (2024)	11.6	8.3	2.8
Other crime (2024)	2.7	2.6	2.0
Other theft (2024)	5.1	4.9	6.9
Possession of weapons (2024)	0.8	0.7	0.9
Public order (2024)	9.3	9.5	6.6
Robbery (2024)	0.6	0.4	1.3
Shoplifting (2024)	5.4	4.5	7.9
Theft from the person (2024)	0.2	0.1	2.3
Vehicle crime (2024)	2.6	2.3	5.7
Violence and sexual offences (2024)	41.9	38.2	32.3

**Note:** Rates were calculated using 2022 mid-year population estimates due to data availability.

**Social Trust (%) (2023) and Index of Multiple Deprivation (IMD) deciles (2019)**  
(IMD Decile 1 = Most Deprived)



**Source:** [MHCLG IMD, 2019](#); [Onward, 2023](#)

**Note:** Data is at MSOA level, resulting in multiple MSOAs per BUA. There was an average of 7 respondents per MSOA.

[Net social trust](#) is defined as the estimated proportion of people who say they generally trust others minus the proportion of people who say that you cannot be too careful when dealing with people. According to [Onward \(2023\)](#), **Kirkby has a social trust score of -19%**, which is lower than the England average of -3%, showing that there is a lower level of social trust within Kirkby than national levels. More deprived [Middle Layer Super Output Areas \(MSOAs\)](#) are likely to have lower levels of social trust than less deprived MSOAs in Kirkby.





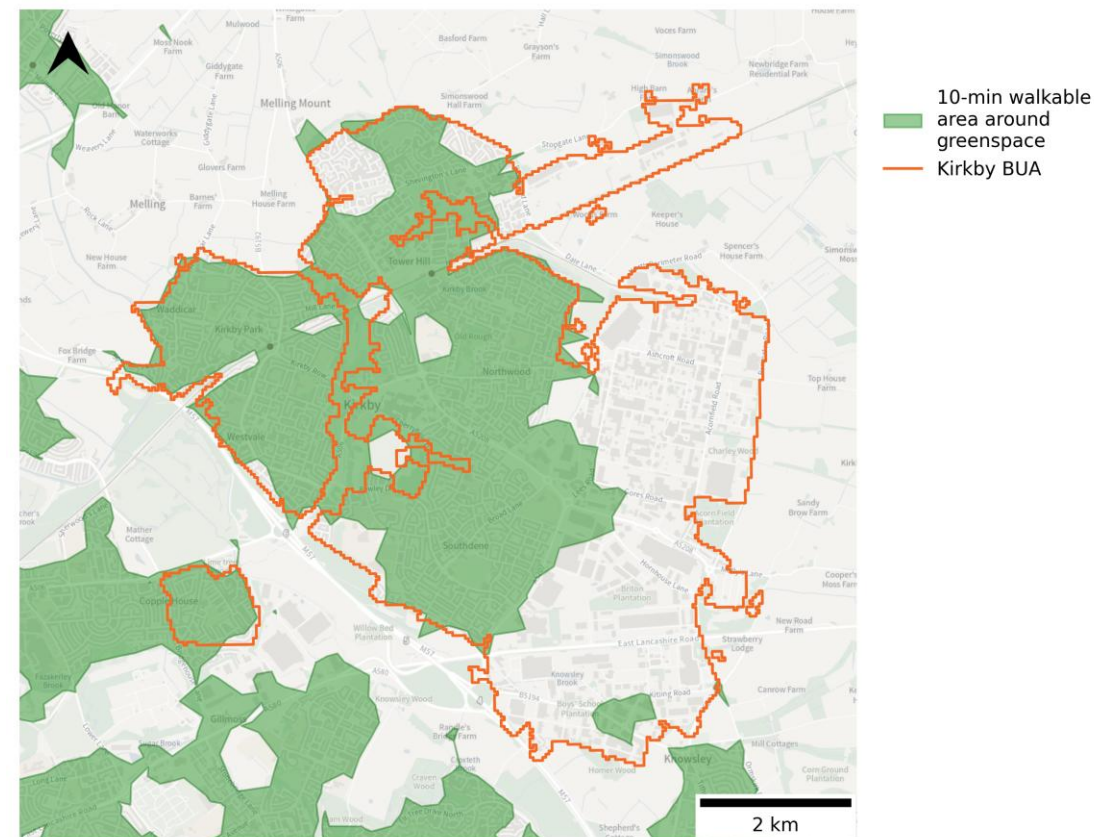
## High Streets, Heritage and Regeneration (1/2)

Indicator	Kirkby	England
Number of outlets (takeaways, restaurants, clubs, bars, pubs, fitness facilities and sport clubs) per 1,000 population (June 2025)	0.9	2.5
Commercial vacancy rate* (%) (June 2025)	12.2	10.4
Footfall index** based on Virgin Media O2 mobile phone data (April 2022 to March 2023)	87.7	100.0

\* The commercial vacancy rate represents the total number of retail and leisure units that are vacant but in an occupiable state, as a percentage of the total number of business units in a destination. Where units are under renovation or demolished, they are not classed as vacant. Commercial vacancy rate is based on data from Green Street. They produce a separate measure of vacancy rate following a different methodology which may differ to that included here.

\*\* Anonymised and aggregated mobile network data by Virgin Media O2. Footfall is defined as the average daily number of outbound journeys (not including journeys to home) within the Built Up Area over the period April 2022-March 2023. The mean average footfall of Built Up Areas in England with populations similar to Kirkby (+/- 30%) has been standardised to an index of 100. The number for Kirkby is scaled relative to this average.

10-minute walking distance to greenspace access points in Kirkby (2025)



Source: [OpenStreetMap, 2025](#); [Ordnance Survey, 2025](#)

**Note:** 10-minute walkable area is created using OpenStreetMap walking network and OS Greenspace Access Points, excluding: Allotments or Community Growing Spaces, Cemeteries, Religious Grounds, and Golf Courses.

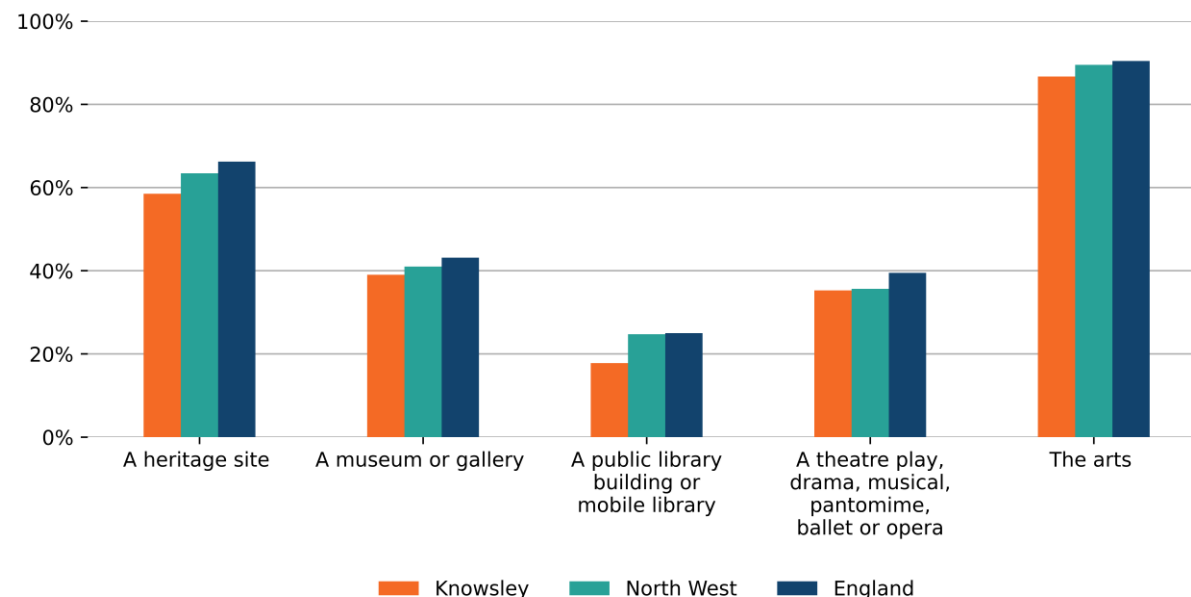


## High Streets, Heritage and Regeneration (2/2)

Indicator	Knowsley	North West	England
Adults who engaged with the arts in person (%) (May 2023 to March 2024)	86.7	89.5	90.4
Adults who engaged physically with a theatre play, drama, musical, pantomime, ballet or opera (%) (May 2023 to March 2024)	35.2	35.6	39.5
Adults who visited a museum or gallery in person (%) (May 2023 to March 2024)	39.0	41.0	43.1
Adults who visited a heritage site in person (%) (May 2023 to March 2024)	58.5	63.4	66.2
Adults who visited a public library building or mobile library in person (%) (May 2023 to March 2024)	17.8	24.7	25.0

**Note:** Cultural participation data is at Local Authority level. Each Built Up Area has been matched to its respective Local Authority based on geographic area share.

Adults physically engaging with cultural facilities (%) (May 2023 to March 2024)



Source: [DSIT, DCMS, Arts Council England, 2025](#)





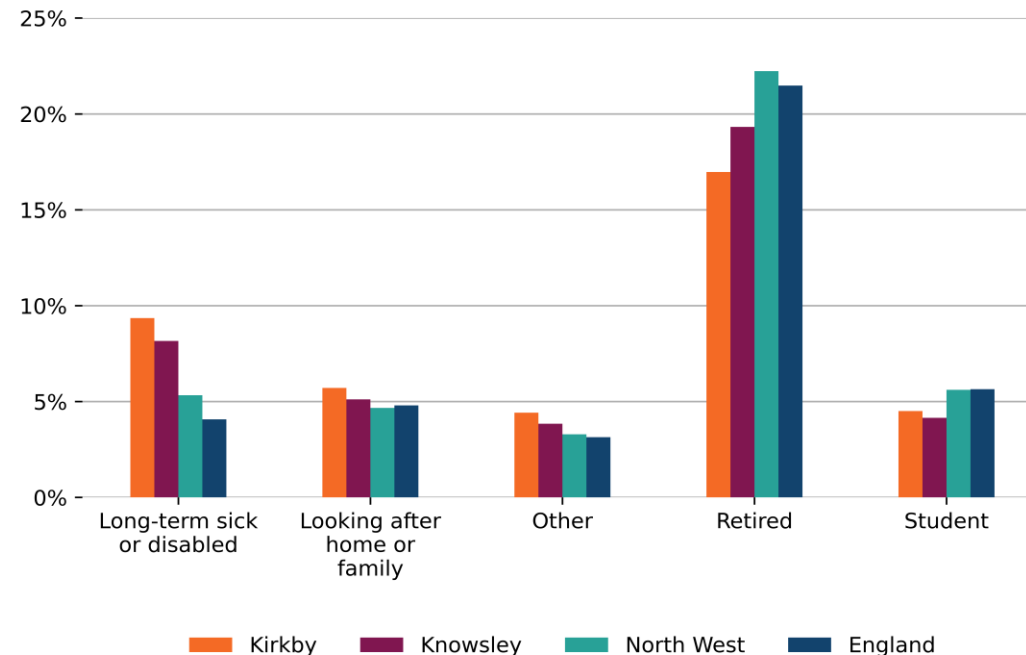
# Education, Work, Productivity and Skills

Indicator	Kirkby	Knowsley	North West	England
Gross Value Added per job filled (£) (2022)	49,703	53,377	56,625	62,751
16-64 year olds with level 3+ qualifications* (%) (2021)	42.1	47.1	54.7	56.6
16-64 year olds with no qualifications (%) (2021)	22.1	18.6	13.5	12.4
Employment rate (age 16 to 64) (%) (2021)	66.0	68.2	69.2	71.0
Unemployment rate (age 16+) (%) (2021)	5.9	5.6	5.5	5.4
Economic inactivity rate (age 16+) (%) (2021)	41.0	40.6	41.1	39.1
Job density** (2022)	0.80	0.77	0.75	0.77

\* Proportion of 16 to 64 year olds with a [level 3 qualification or above](#), such as 2 or more A levels, 4 or more AS levels, degree (BA, BSc) or higher degree (MA, PhD, PGCE).

\*\* [Job density](#) is defined as the number of jobs in an area divided by the resident population aged 16-64 in that area. For example, a job density of 1.0 would mean that there is one job for every resident aged 16-64.

Population (16+) that are economically inactive, by reason (%) (2021)



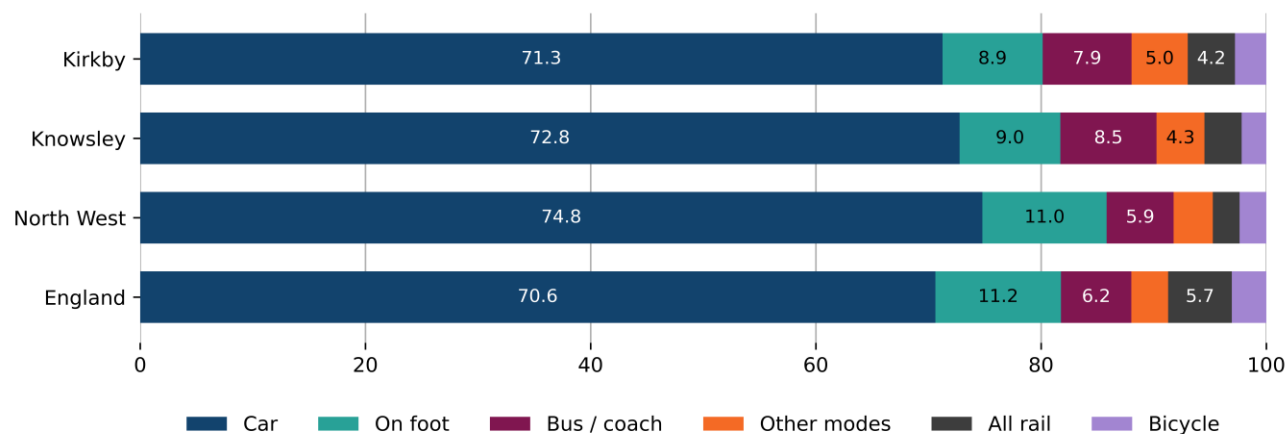
Source: [ONS, 2022](#)



## Transport and Connectivity (1/2)

Indicator	Kirkby	Knowsley	North West	England
Premises with gigabit capable broadband (%) (July 2024)	94	95	84	83

Method of travel to work (%) (2021)



Source: [ONS, 2022](#)

**Note:** We have excluded the “Work mainly at or from home” category from this chart to make it easier to clearly see the methods used to travel to work. Percentages do not include those working from home. Missing labels on the bars represent a percentage of less than 4%.

**Note:** Data presented on the chart above (from Census 2021) should not be compared with the tables on the right, which represent Census 2011 data. The tables on the right are based on BUA 2011 geographies, which may differ in boundaries and names from the closest matching BUA 2024 geographies used for most of the data in this pack. Census travel data for 2021 were impacted by lockdown restrictions and the furlough scheme that were in place in March 2021.

Flows of commuters entering or leaving Kirkby (2011)

BUA	2011 Population	Incoming	Outgoing	Working local
Kirkby	42,744	13,738	12,232	5,424

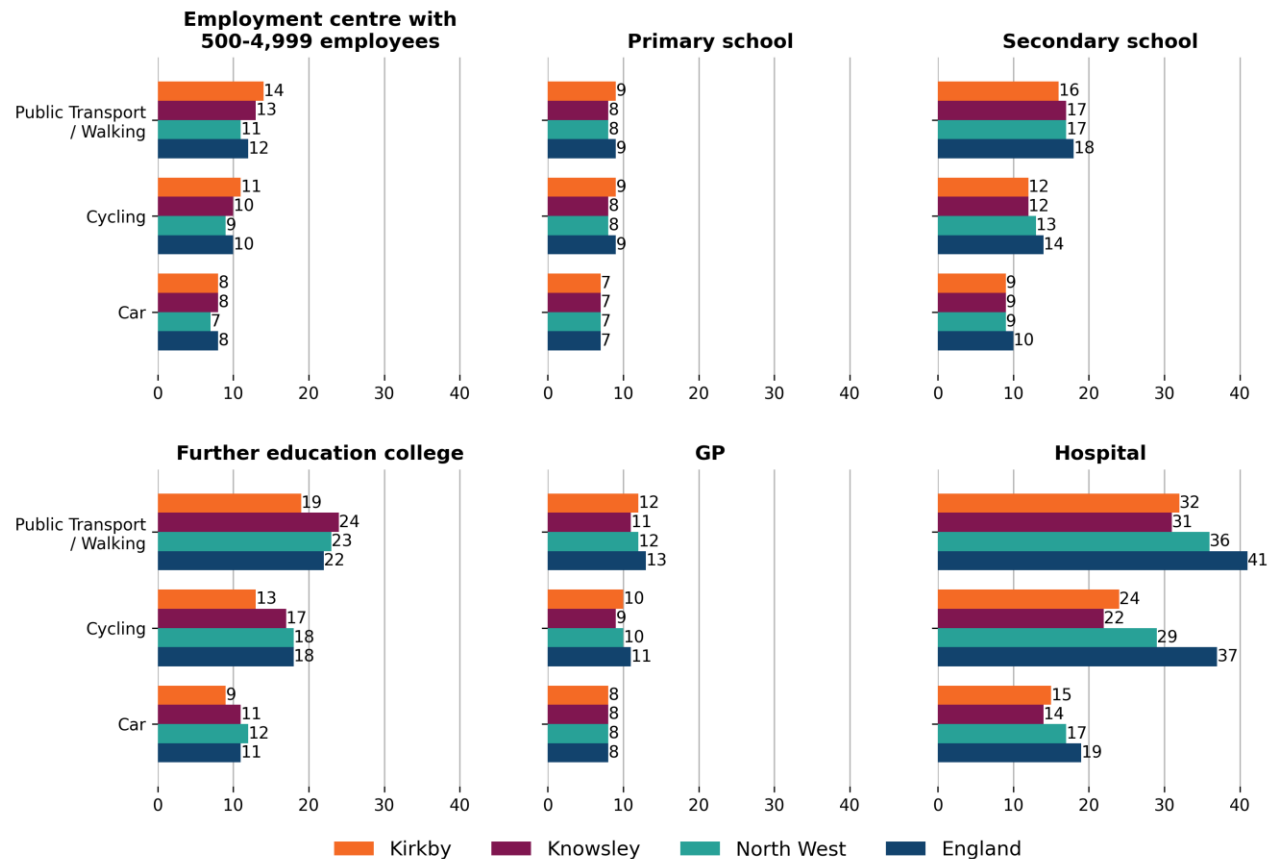
Top 10 residence - work connections between Built Up Areas (2011)

Place of Residence	Place of Work	People
Liverpool	Kirkby	6,256
Kirkby	Liverpool	5,706
Kirkby	Kirkby	5,424
Kirkby	No fixed place of work	1,382
St Helens	Kirkby	704
Kirkby	Bootle	629
Prescot	Kirkby	565
Maghull	Kirkby	531
Kirkby	Prescot	503
Bootle	Kirkby	492



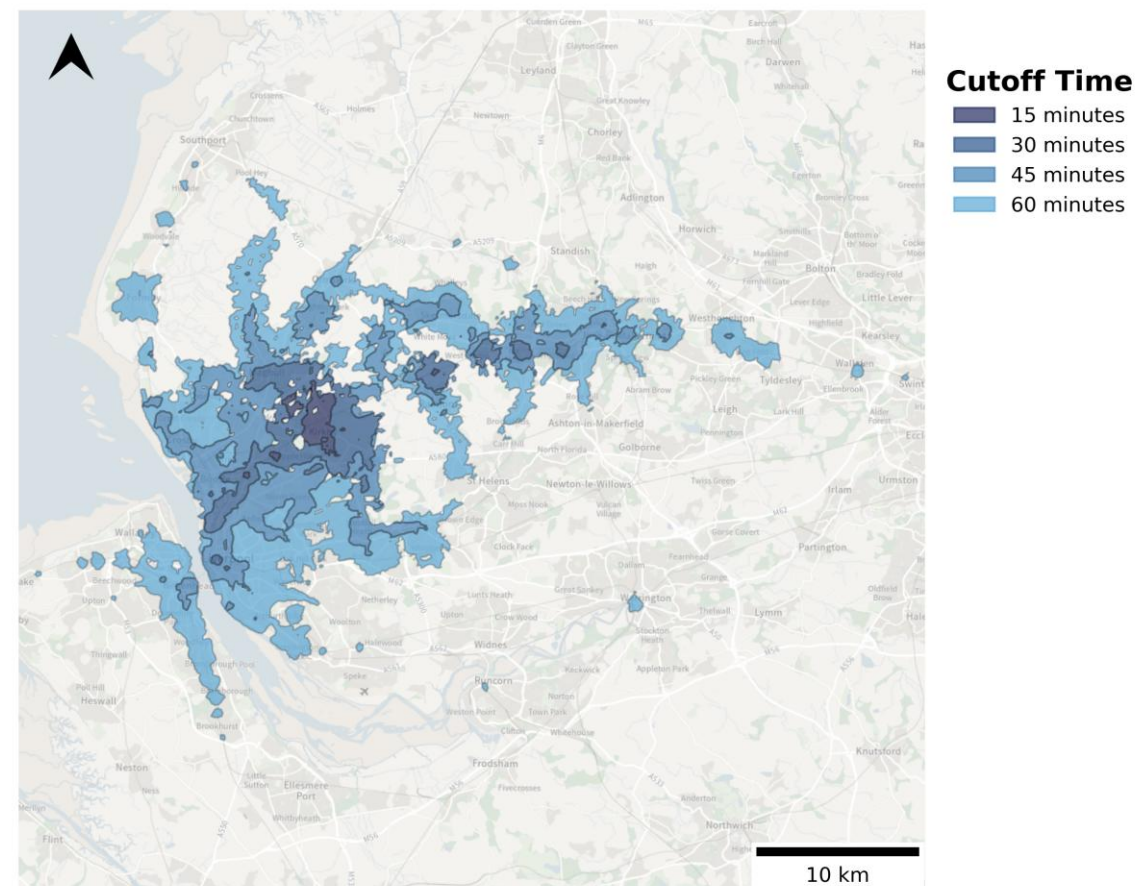
## Transport and Connectivity (2/2)

Average minimum travel time to the nearest key service (minutes) (2019)



Source: [Department for Transport, 2021](#)

Public transport accessibility by journey time (2022) from Kirkby (Merseyside) train station, between 7:15am and 9:15am



Source: [ONS, 2023](#)

Note: Data is from 15th November 2022

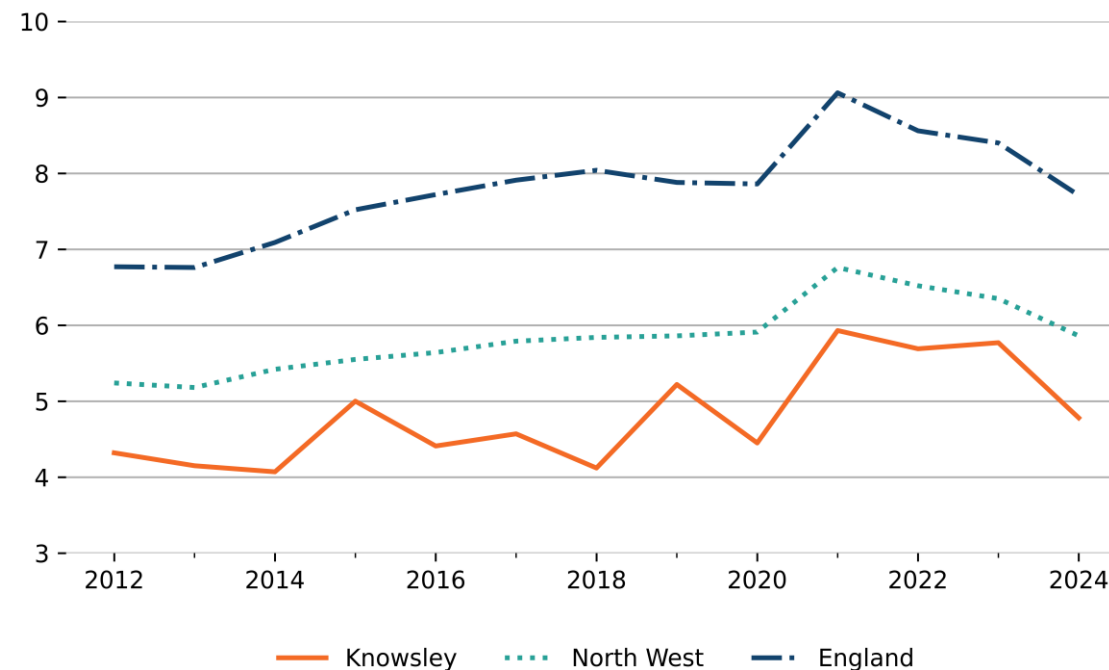


# Housing

Indicator	Knowsley	North West	England
Ratio of median house price to median gross annual workplace-based earnings (2024)	4.8	5.9	7.7
Non-decent dwellings (%) (2020-21)	11.9	17.0	15.1

**Note:** The housing data in this pack is at Local Authority level. Each Built Up Area has been matched to its respective Local Authority based on geographic area share.

Housing affordability ratio: median house price to median gross annual workplace-based earnings (2012 to 2024)



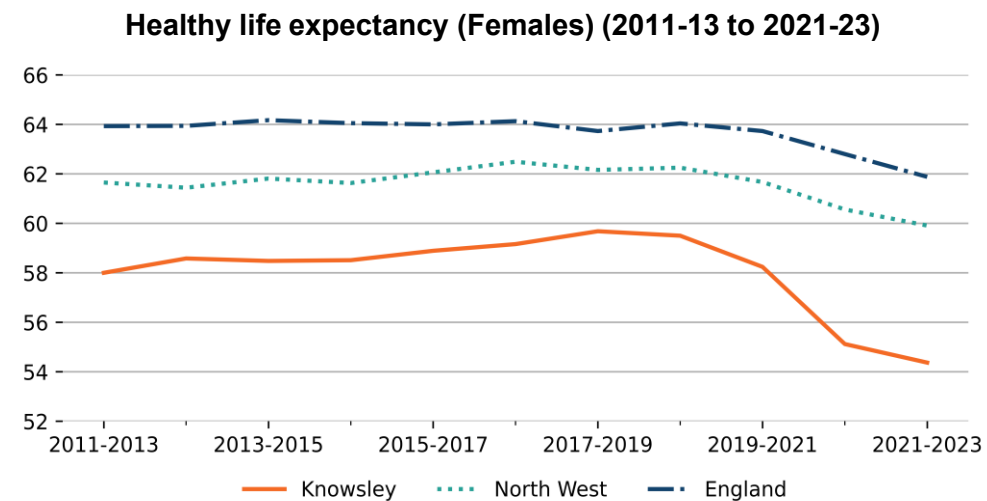
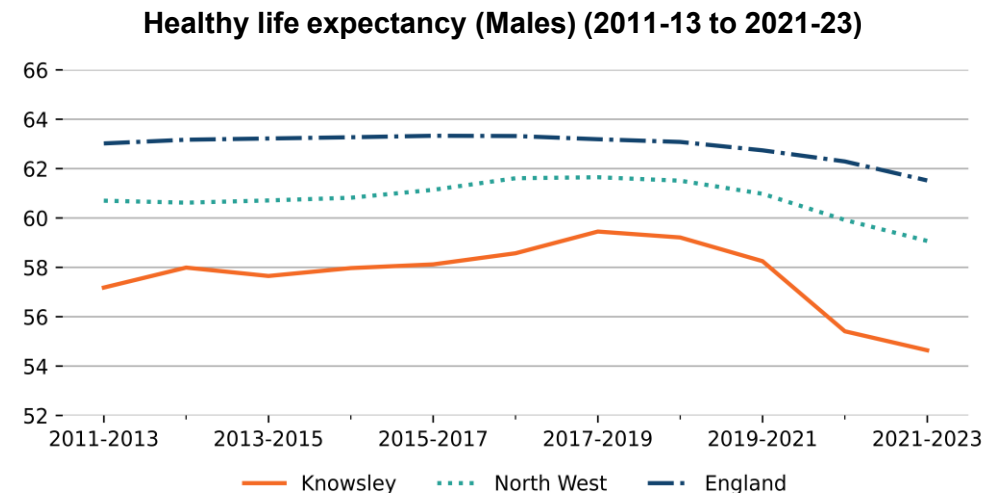
Source: [ONS, 2024](#)



# Health and Wellbeing

Indicator	Kirkby	Knowsley	North West	England
Healthy life expectancy (Males) (2021-2023)	Data unavailable	54.6	59.1	61.5
Healthy life expectancy (Females) (2021-2023)	Data unavailable	54.4	59.9	61.9
GP appointments per 1,000 patients (Sept 2024)	507.4	462.2	445.4	472.4
Patients saying they had a good experience contacting their GP on last occasion (%) (2024)	68	59	68	67

**Note:** Healthy life expectancy data is at Local Authority level. Each Built Up Area has been matched to its respective Local Authority based on geographic area share.



Source: [ONS, 2024](#)



# Demographics and deprivation



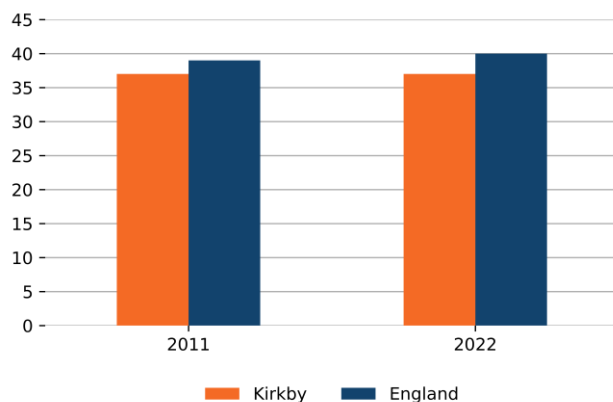


# Demographics

## Headlines:

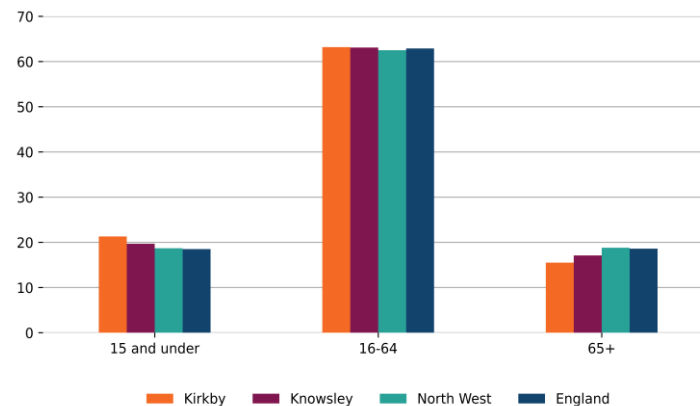
- In 2022, the median age in **Kirkby was 37 years**. The median age for England was 40. The median age for Knowsley was 39 years. The map on the right shows the average median age within Kirkby at [Lower Layer Super Output Areas \(LSOAs\)](#) level.
- The median age in Kirkby **was the same** between 2011 and 2022. For context, the median age in England increased by 1 year over the same period (*see bottom left chart below*).
- In 2022, Kirkby had a population **of 46,261**. Between 2011 and 2022, Kirkby's **population increased by 8.0%**. For context, the population increased by 7.7% in Knowsley, increased by 6.6% in the North West, and increased by 7.7% in England.
- In 2022, 21.3% of people in Kirkby were under 16 years old, and 15.5% were aged 65 and over. For context, the England average was 18.5% and 18.6%, respectively (*see bottom right chart below*).
- Across the LSOAs that make up Kirkby (either wholly or in part) in 2021, 96.3% of people identified with a White ethnic group, 0.8% as Asian, Asian British or Asian Welsh, 0.8% as Black, Black British, Black Welsh, Caribbean or African, 1.5% with Mixed or Multiple ethnic groups, and 0.6% with other ethnic groups

Median age of population (2011 and 2022)



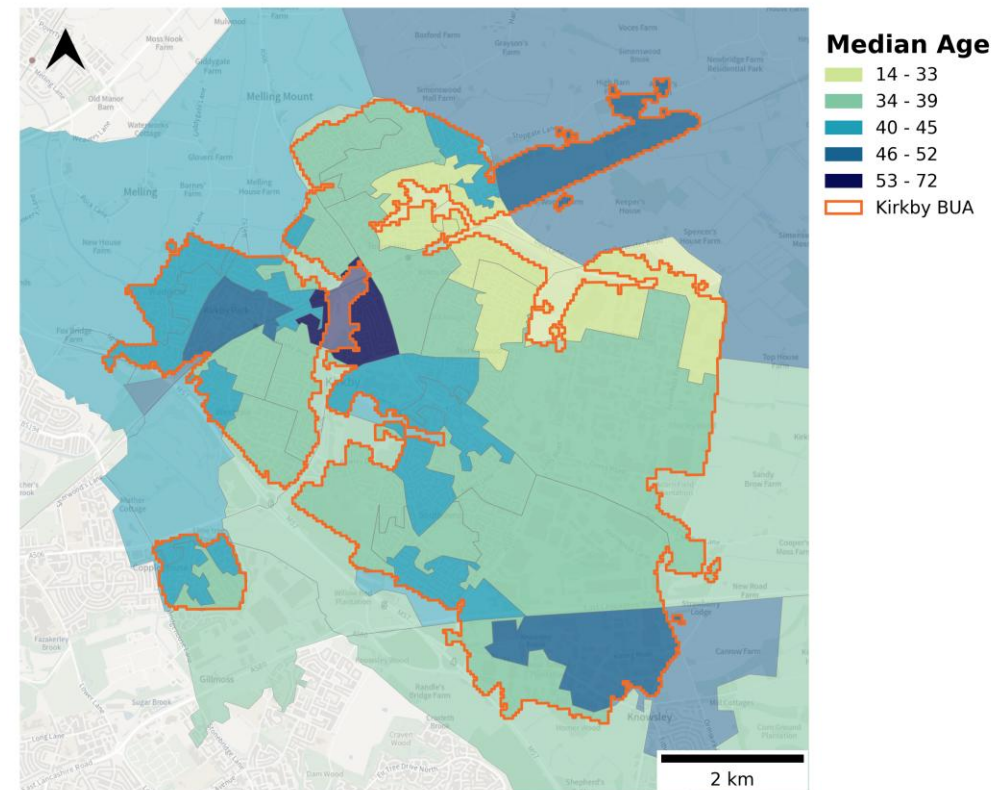
Source: [ONS, 2022](#); [ONS Census, 2011](#)

Age profile by location (%) (2022)



Source: [ONS, 2022](#)

Median age in Kirkby at LSOA level (2022)



Source: [ONS, 2024](#)

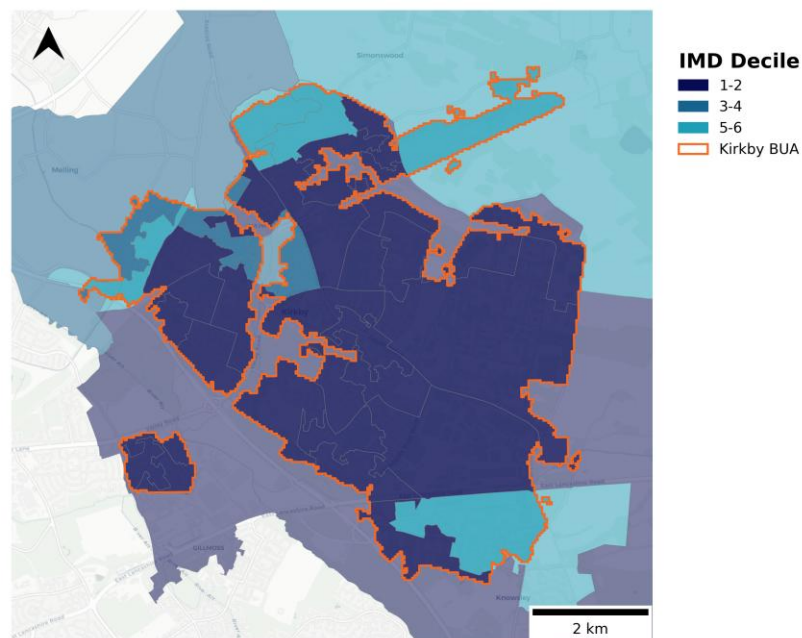


# Deprivation

## Headlines:

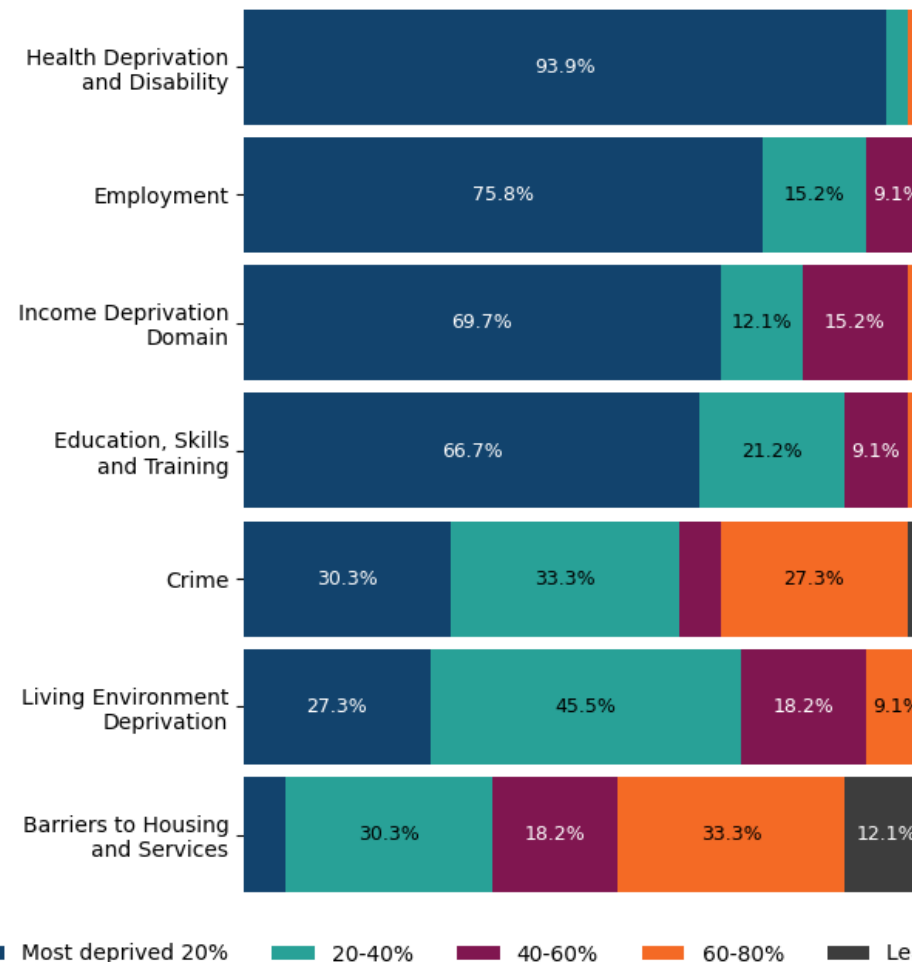
- In 2019, **over 90%** of LSOAs in Kirkby were in the **top 20% most deprived in England in terms of Health Deprivation and Disability**.
- Health Deprivation and Disability (72.7%) and Employment (57.6%)** were the domains that had the largest proportion of Kirkby's LSOAs in the **top 10% most deprived in England**.
- In 2022-23, **32.3%** of under-16s in Kirkby lived in **relative low income families**. This is higher than the England (21.3%) average.

## Deprivation levels across LSOAs within Kirkby by decile (2019) (Decile 1 = Top 10% most deprived in England)



Source: [MHCLG IMD, 2019](#)

## Deprivation levels (%) across LSOAs within Kirkby, compared to the England average (2019)



Source: [MHCLG IMD, 2019](#)

**Note:** Missing labels on the bars represent a percentage of less than 7%.

**Note:** All LSOAs that fall within the BUA boundary are included in the overall BUA calculations. This includes LSOAs that fall partly outside the boundary.



# Annex - Data and sources



## Data and sources

Indicator	Slide	Source
Recorded crime rate per 1,000 population (2022)	Safety, Security and Cohesion	<a href="https://data.police.uk/data/">https://data.police.uk/data/</a>
Anti-social behaviour (2024)	Safety, Security and Cohesion	<a href="https://data.police.uk/data/">https://data.police.uk/data/</a>
Social trust (2023)	Safety, Security and Cohesion	<a href="https://www.ukonward.com/reports/good-neighbours/">https://www.ukonward.com/reports/good-neighbours/</a>
Recorded crime by type per 1,000 population (2024)	Safety, Security and Cohesion	<a href="https://data.police.uk/data/">https://data.police.uk/data/</a>
Number of outlets (takeaways, restaurants, clubs, bars, pubs, fitness facilities and sport clubs) per 1,000 population (June 2025)	High Streets, Heritage and Regeneration (1/2)	Local Data Company
Commercial vacancy rate (%) (June 2025)	High Streets, Heritage and Regeneration (1/2)	Local Data Company
Footfall index based on Virgin Media O2 mobile phone data (April 2022 to March 2023)	High Streets, Heritage and Regeneration (1/2)	Anonymised and aggregated mobile network data by Virgin Media O2
10-minute walking distance to greenspace access points (2025)	High Streets, Heritage and Regeneration (1/2)	MHCLG analysis based on Ordnance Survey Open Greenspace data and OpenStreetMap
Adults who engaged with the arts in person (%) (May 2023 to March 2024)	High Streets, Heritage and Regeneration (2/2)	<a href="https://www.gov.uk/government/statistics/participation-survey-2023-24-annual-publication">https://www.gov.uk/government/statistics/participation-survey-2023-24-annual-publication</a>



## Data and sources

Indicator	Slide	Source
Adults who engaged physically with a theatre play, drama, musical, pantomime, ballet or opera (%) (May 2023 to March 2024)	High Streets, Heritage and Regeneration (2/2)	<a href="https://www.gov.uk/government/statistics/participation-survey-2023-24-annual-publication">https://www.gov.uk/government/statistics/participation-survey-2023-24-annual-publication</a>
Adults who visited a museum or gallery in person (%) (May 2023 to March 2024)	High Streets, Heritage and Regeneration (2/2)	<a href="https://www.gov.uk/government/statistics/participation-survey-2023-24-annual-publication">https://www.gov.uk/government/statistics/participation-survey-2023-24-annual-publication</a>
Adults who visited a heritage site in person (%) (May 2023 to March 2024)	High Streets, Heritage and Regeneration (2/2)	<a href="https://www.gov.uk/government/statistics/participation-survey-2023-24-annual-publication">https://www.gov.uk/government/statistics/participation-survey-2023-24-annual-publication</a>
Adults who visited a public library building or mobile library in person (%) (May 2023 to March 2024)	High Streets, Heritage and Regeneration (2/2)	<a href="https://www.gov.uk/government/statistics/participation-survey-2023-24-annual-publication">https://www.gov.uk/government/statistics/participation-survey-2023-24-annual-publication</a>
Gross Value Added per job filled (£) (2022)	Education, Work, Productivity and Skills	<a href="https://www.ons.gov.uk/economy/grossvalueaddedgva/datasets/ukgvaandproductivityestimatesforothergeographies">https://www.ons.gov.uk/economy/grossvalueaddedgva/datasets/ukgvaandproductivityestimatesforothergeographies</a>
16-64 year olds with level 3+ qualifications (%) (2021)	Education, Work, Productivity and Skills	<a href="https://www.ons.gov.uk/peoplepopulationandcommunity/housing/articles/townsandcitiescharacteristicsofbuiltupareasenglandandwales/census2021#qualifications">https://www.ons.gov.uk/peoplepopulationandcommunity/housing/articles/townsandcitiescharacteristicsofbuiltupareasenglandandwales/census2021#qualifications</a>
16-64 year olds with no qualification (%) (2021)	Education, Work, Productivity and Skills	<a href="https://www.ons.gov.uk/peoplepopulationandcommunity/housing/articles/townsandcitiescharacteristicsofbuiltupareasenglandandwales/census2021#qualifications">https://www.ons.gov.uk/peoplepopulationandcommunity/housing/articles/townsandcitiescharacteristicsofbuiltupareasenglandandwales/census2021#qualifications</a>
Employment rate (age 16 to 64) (%) (2021)	Education, Work, Productivity and Skills	<a href="https://www.ons.gov.uk/datasets/TS066/editions/2021/versions/6?">https://www.ons.gov.uk/datasets/TS066/editions/2021/versions/6?</a>
Unemployment rate (age 16+) (%) (2021)	Education, Work, Productivity and Skills	<a href="https://www.ons.gov.uk/datasets/TS066/editions/2021/versions/6?">https://www.ons.gov.uk/datasets/TS066/editions/2021/versions/6?</a>
Economic inactivity rate (age 16+) (%) (2021)	Education, Work, Productivity and Skills	<a href="https://www.ons.gov.uk/datasets/TS066/editions/2021/versions/6?">https://www.ons.gov.uk/datasets/TS066/editions/2021/versions/6?</a>



## Data and sources

Indicator	Slide	Source
Job density (2022)	Education, Work, Productivity and Skills	<a href="https://www.ons.gov.uk/employmentandlabourmarket/peopleinwork/employmentandemployeetypes/adhocs/2877jobdensity2022byselectedbuiltupareas2024">https://www.ons.gov.uk/employmentandlabourmarket/peopleinwork/employmentandemployeetypes/adhocs/2877jobdensity2022byselectedbuiltupareas2024</a>
Population (16+) that are economically inactive, by reason (%) (2021)	Education, Work, Productivity and Skills	<a href="https://www.nomisweb.co.uk/datasets/c2021rm024">https://www.nomisweb.co.uk/datasets/c2021rm024</a>
Premises with gigabit capable broadband (%) (July 2024)	Transport and Connectivity (1/2)	<a href="https://www.ofcom.org.uk/phones-and-broadband/coverage-and-speeds/connected-nations-2024">https://www.ofcom.org.uk/phones-and-broadband/coverage-and-speeds/connected-nations-2024</a>
Method of travel to work (2021)	Transport and Connectivity (1/2)	<a href="https://www.ons.gov.uk/employmentandlabourmarket/peopleinwork/employmentandemployeetypes/bulletins/traveltoworkenglandandwales/census2021">https://www.ons.gov.uk/employmentandlabourmarket/peopleinwork/employmentandemployeetypes/bulletins/traveltoworkenglandandwales/census2021</a>
Flows of commuters entering or leaving (2011)	Transport and Connectivity (1/2)	MHCLG analysis based on Census 2011 data
Top 10 residence – work connections between Built Up Areas (2011)	Transport and Connectivity (1/2)	MHCLG analysis based on Census 2011 data
Average minimum travel time to the nearest key service (minutes) (2019)	Transport and Connectivity (2/2)	<a href="https://www.gov.uk/government/statistical-data-sets/journey-time-statistics-data-tables-jts">https://www.gov.uk/government/statistical-data-sets/journey-time-statistics-data-tables-jts</a>
Public transport accessibility by journey time from train station/landmark (2022)	Transport and Connectivity (2/2)	<a href="https://geoportal.statistics.gov.uk/search?q=PRD_ISO&amp;sort=Date%20Created%7Ccreated%7Cdesc">https://geoportal.statistics.gov.uk/search?q=PRD_ISO&amp;sort=Date%20Created%7Ccreated%7Cdesc</a>
Ratio of median house price to median gross annual workplace-based earnings (2024)	Housing	<a href="https://www.ons.gov.uk/peoplepopulationandcommunity/housing/datasets/ratioofhousepricetoworkplacebasedearningslowerquartileandmedian">https://www.ons.gov.uk/peoplepopulationandcommunity/housing/datasets/ratioofhousepricetoworkplacebasedearningslowerquartileandmedian</a>
Non-decent dwellings (%) (2020-21)	Housing	<a href="https://www.gov.uk/government/statistics/english-housing-survey-local-authority-housing-stock-condition-modelling-2020">https://www.gov.uk/government/statistics/english-housing-survey-local-authority-housing-stock-condition-modelling-2020</a>





## Data and sources

Indicator	Slide	Source
Healthy Life Expectancy (Males) (2021-2023)	Health and Wellbeing	<a href="https://www.ons.gov.uk/peoplepopulationandcommunity/healthandsocialcare/healthandlifeexpectancies/datasets/healthstatelifeexpectancyallagesuk">https://www.ons.gov.uk/peoplepopulationandcommunity/healthandsocialcare/healthandlifeexpectancies/datasets/healthstatelifeexpectancyallagesuk</a>
Healthy Life Expectancy (Females) (2021-2023)	Health and Wellbeing	<a href="https://www.ons.gov.uk/peoplepopulationandcommunity/healthandsocialcare/healthandlifeexpectancies/datasets/healthstatelifeexpectancyallagesuk">https://www.ons.gov.uk/peoplepopulationandcommunity/healthandsocialcare/healthandlifeexpectancies/datasets/healthstatelifeexpectancyallagesuk</a>
GP appointments per 1,000 patients (Sept 2024)	Health and Wellbeing	<a href="https://digital.nhs.uk/data-and-information/publications/statistical/appointments-in-general-practice/september-2024">https://digital.nhs.uk/data-and-information/publications/statistical/appointments-in-general-practice/september-2024</a>
Patients saying they had a good experience contacting their GP on last occasion (%) (2024)	Health and Wellbeing	<a href="https://gp-patient.co.uk/practices-search">https://gp-patient.co.uk/practices-search</a>
Median age (2022)	Demographics	<a href="https://www.ons.gov.uk/peoplepopulationandcommunity/populationandmigration/populationestimates/bulletins/populationestimatesforenglandandwales/mid2022">https://www.ons.gov.uk/peoplepopulationandcommunity/populationandmigration/populationestimates/bulletins/populationestimatesforenglandandwales/mid2022</a>
Median age (2011)	Demographics	<a href="https://www.nomisweb.co.uk/census/2011/ks102ew">https://www.nomisweb.co.uk/census/2011/ks102ew</a>
Population estimates (2022)	Demographics	<a href="https://www.ons.gov.uk/peoplepopulationandcommunity/populationandmigration/populationestimates/bulletins/populationestimatesforenglandandwales/mid2022">https://www.ons.gov.uk/peoplepopulationandcommunity/populationandmigration/populationestimates/bulletins/populationestimatesforenglandandwales/mid2022</a>
Population estimates (2011)	Demographics	<a href="https://www.nomisweb.co.uk/census/2011/ks101ew">https://www.nomisweb.co.uk/census/2011/ks101ew</a>
Age profile (2022)	Demographics	<a href="https://www.ons.gov.uk/peoplepopulationandcommunity/populationandmigration/populationestimates/bulletins/populationestimatesforenglandandwales/mid2022">https://www.ons.gov.uk/peoplepopulationandcommunity/populationandmigration/populationestimates/bulletins/populationestimatesforenglandandwales/mid2022</a>
Ethnicity (2021)	Demographics	<a href="https://www.ons.gov.uk/datasets/TS021/editions/2021/versions/3">https://www.ons.gov.uk/datasets/TS021/editions/2021/versions/3</a>
English Indices of Deprivation (2019)	Deprivation	<a href="https://opendatacommunities.org/data/societal-wellbeing/imd2019/indices">https://opendatacommunities.org/data/societal-wellbeing/imd2019/indices</a>
Under-16s in relative low income families (%) (2022-23)	Deprivation	<a href="https://stat-xplore.dwp.gov.uk/webapi/jsf/login.xhtml">https://stat-xplore.dwp.gov.uk/webapi/jsf/login.xhtml</a>