

Waste Management Statement to support 4no. Class C1 Mews Houses 11-13 Whiteladies Road, Bristol, BS8 1PB

12th June 2025

This Waste Management Statement has been based on the Bristol City Council's guide *Waste and Recycling Storage and Collection Facilities* (updated March 2022).

The proposed development is for 4no. Mews houses (Class C1). These will form additional C1 accommodation to the proposed Class C1 apartments to the main building (planning reference 25/11594/F). For this waste strategy statement we have accounted for the whole site. All mews houses will have their own cooking facilities. However, as temporary accommodation, where residents are there for business or holiday purposes, we have assumed that waste generated may be comparable with student apartments for a weekly collection. We have also assumed that plastic / can waste generation will be at the lower end of the volume range in the BCC guide.

The number of apartments to the development

The development will be for 4 no. hotel mews houses (planning class C1) and will provide additional accommodation to sit alongside the 20 apartments to the main house

The size of the refuse and recycling bins

Due to the nature of the Class C1 use it is proposed there will be a communal store with the larger containers.

The container sizes will be in accordance with Table 4 of the BCC guidance document;

- 1100 litres - 1250w x 980d x 1470h
- 360 litres - 680w x 880d x 1100h
- 240 litres - 580w x 730d x 1060h
- 140 litres - 480w x 560 d x 1060h

The number / mix of refuse and recycling bins

The waste and recycling requirements is based on the total number of bedspaces across the whole site

Below is a table which outlines the required number of containers;

No. of bed spaces	54					
Material	Collection frequency	Container size used	Litres required per flat	Litres required	Number of bins	Bins rounded
Plastic / cans	1	360	15	810	2.25	3
Glass	1	240	3	162	0.675	1
Paper	1	240	1	54	0.225	1
Card	1	1100	16	864	0.785	1
Food	1	140	2	108	0.77	1
Refuse	0.5	1100	39	2106	1.91	2

How refuse and recycling is provided visitors/ residents

All waste will be collected from the mews houses by a member of staff and taken to the refuse store. It is proposed that all the refuse and recycling storage is located in a single area to the rear of the site. The plan for the bin store arrangement is contained in Appendix A. The waste store will be enclosed by a 2m high horizontal hit and miss timber fence.

How refuse and recycling is moved for collection day

The refuse and recycling bins will be moved to the holding area adjacent to the pavement on the days for collection by a member of staff. This is where existing waste for the offices is currently collected from (fig 1). Once the waste has been collected the bins will be returned promptly to the refuse store.

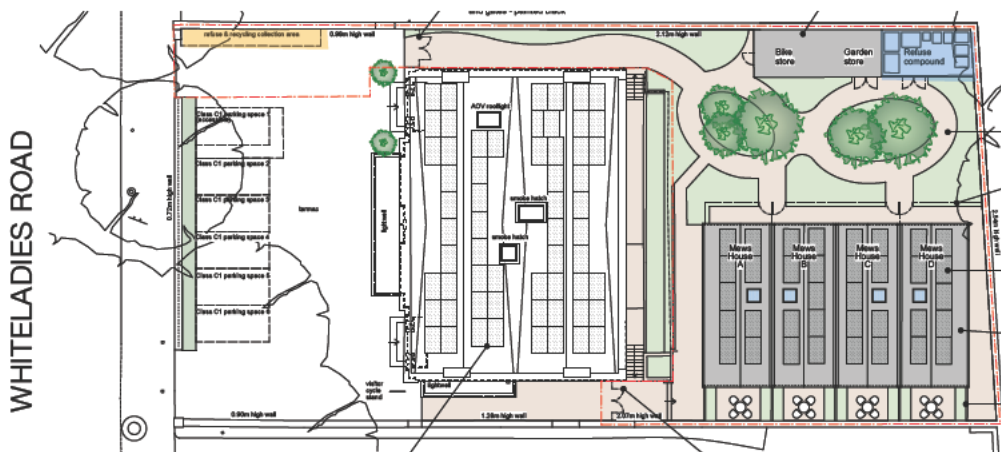


Figure 1: Existing waste collection day holding store to the front left of no. 11 (Google Earth)

Appendix A

Site wide waste storage plan

Below is the proposed site wide waste store plan with the refuse and recycling store indicated in blue and the collection day holding point indicated in yellow. The collection point is as existing.



Refuse & Recycling Centre

Below is a plan of the refuse and recycling area. This will be fenced off from the rear garden and will include the following;

- 2 no. 1100 litre bin for refuse
- 1 no. 1100 litre bin for cardboard
- 3 no. 360 litre bin for plastic and cans
- 1 no. 240 litre bin for glass
- 1 no. 240 litre bin for paper
- 1 no. 140 litre bin for food waste

As all waste is managed by staff the Refuse and Plastic/cans will be switched around mid week as required.

