

Socio-Economic scheme Funding Guidance

2024

The NRS socio-economic scheme provides funding to support activities that benefit the social or economic life of communities close to NRS facilities in support of the Nuclear Decommissioning Authority's (NDA) responsibilities under the Energy Act (2004). It follows Cabinet Office guidelines as set out in 'Managing Public Money' and 'Government Functional Standard for General Grants' which are intended to provide value for money, transparency, and the better achievement of objectives.

The scheme has three objectives:

1. Supporting transformative projects
2. Helping to build sustainable communities
3. Being a good neighbour

Funding

NRS manages a funding portfolio of just over £1million each financial year across 12 NRS sites on behalf of the NDA. Funding is available on a rolling programme to support our aims on three levels:

1. Over £10,000 to support large projects that make a significant contribution towards delivering socio-economic objectives nearest to NRS sites. Match-funding required (30% of cost) this must be cash-based and cannot be time, labour, or materials. The ability to provide match-funding above the minimum level will be taken into consideration as part of the assessment process. Payment is normally made in arrears.
2. Up to £10,000 capital expenditure towards a sustainable project
3. Up to £2,000 for small projects neighbouring NRS sites

Socio-economic funding will be distributed fairly and prioritised according to the socio-economic needs of individual NRS communities. Funding to support activities of up to £2,000 is very competitive and limited to £6,000 per year for each NRS site.

Transformative projects

We welcome applications for large, transformative projects some of which may require multi-year funding.

NOTE:

Higher value applications will be required to report against established Social Value themes and criteria.

Who can apply?

To be eligible for funding you must be a:

- Constituted community/ voluntary/ charity group:
- State funded education provider or pre-school group
- Regional, county, town, parish or community council



What we can't support

- * Applications from organisations that previously received NRS (formerly Magnox) socio-economic scheme funding that did not comply with our conditions (e.g: complete end of project report).
- * Activities that your Local Authority/Local Education Authority/National Charities have a statutory obligation to provide.
- Activities/events raising money for third parties
- * Prizes or prize draw print costs for fundraising events.
- * Individual or group sponsorships.
- * Loan payments.
- * National charities where funding is collected and administered centrally. Exceptions may be made where local branches raise and spend their own funding - please contact us before applying.
- * New build or the repair/refurbishment costs of buildings unless part of a transformational project.
- * Repeat funding requests in the same financial year.
- * Paid for lobbying or petitioning to challenge decisions.
- * Payments for political activities or of an exclusively religious nature.
- * Revenue costs—except for large scale, transformational projects.
- * Project running costs e.g. travel costs, utility bills, council tax, building/contents insurance.
- * Expenses.
- * Projects outside the UK or overseas organisations.
- * Profit-making organisations or businesses.
- * Retrospective projects i.e. Project or events that have already taken place and paid for.
- * VAT that you can recover.
- * Defibrillators
- * Tablet devices for classroom use (or any other educational equipment the Education Authority has an obligation to provide).

Assessment criteria

We ensure that a fair, consistent approach is applied nationally. Each funding application is carefully considered on its own merit against the funding criteria.

To be eligible for funding, projects must have a distinct purpose with clearly defined, measurable results that can be demonstrated upon completion. Project funding applications will be assessed for this and **must** meet one or more of the following criteria:

- * Education/skills development
- * Economic or social infrastructure
- * Economic diversification or local supply chain support
- * Creating sustainable employment in large scale, transformative projects.

NOTE:

Higher value applications will be required to report against established Social Value themes and criteria.



TopTip

We are looking for project targets that measure success – funding applications should describe what will be achieved, for what purpose, by when and who will benefit.

TopTip

Please do not apply for funding if you are not eligible.

If you're unsure, please ask; we're here to help.

Be specific about what you need the funding for.

Event support

We will consider funding elements of an event that supports education or skills development. You will need to provide information about the impact of your event and ensure that it meets at least one of our funding criteria.

Funding to support a sustainable element of an annual event will also be considered. For example, external banners or re-useable equipment. Please discuss with your local contact if unsure.

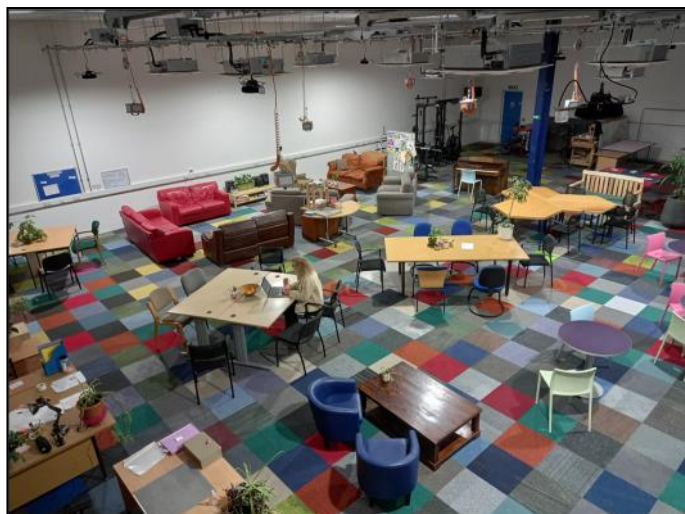
Education and skills development

Good Neighbour support of up to £2,000 will be considered for equipment that enhances learning in the national curriculum. However, goods or services that the Local Education Authority has a statutory obligation to provide, will not be supported.

We can fund equipment that supports education and skills development within community buildings and parish halls. We can also provide limited funding to help keep community buildings attractive to potential renters/users. Please discuss with NRS before applying.

Additional information

More detailed information is available from:
[The NDA's Guidance Document](#).



How to apply

Go to [NRS working with our communities - GOV.UK \(www.gov.uk\)](https://www.gov.uk/nrs-working-with-our-communities)

Applications for funding can only be submitted online.

You can edit and save an online application form until you are ready to submit the final version but once submitted you cannot amend the details. Check that you have included all relevant information and supporting documents.



Got a big project? Talk to an NRS socio-economic contact before applying.

Details are available on this leaflet and the website.



Make sure you attach itemised quotes for the items you're requesting.

Sustainability

What is Sustainability?

Sustainability is about meeting our own needs without compromising the ability of future generation to meet theirs. Society needs to change into one that regenerates and re-uses its resources, and prevents and repairs damage to the natural world; we need to think innovatively and collaborate in how we approach issues in our communities.

NRS thinks about Sustainability in terms of these three Es:



Environment — we work in some of the most remote and starkly beautiful corners of the UK, we have to be cognisant of the natural world around us and the impact we have on it.

Economy — As a publicly funded organisation, NRS has a duty to deliver value for money decommissioning enabling positive social, environmental and financial outcomes.

Equity — Most of our sites are located in rural areas where skills development and training is difficult to access. NRS is looking to work with education providers, district councils and other constituted organisations to help build resilience to support employment and training opportunities where possible in the local community.



If you think you've got a sustainable project you'd like to develop, please talk to either Mair or Jess, one of our NRS Socio-economic Leads before applying.

Volunteering Support

Our sustainability policy commits to supporting the development of resilient communities around our sites.

Using our time, and expertise to support local good causes, in various ways, can make a huge difference to charities and communities and help them become more sustainable.

This is why NRS has partnered with Neighbourly, an award winning platform that helps businesses make a positive impact in their communities by donating volunteer time.

Small charities and community organisations can receive free help and support throughout the year by creating a page [here](#)

There is a detailed FAQ page on the Neighbourly website with more information that you may find useful. If you need any additional help or support getting set up, you can **contact Neighbourly** [here](#)



Application approval process

We ensure that a fair, consistent approach is applied nationally. Each funding application is carefully considered on its own merit against the funding criteria.

Good Neighbour level applications will be considered by the relevant Local Panel.

Applications for funding between **£2,000 and £10,000** are assessed by the NRS Panel.

Applications between **£10,000 and £199,000** are managed by the NRS Executive Panel.

Any application above **£200,000** will also be considered by the One NDA Board, therefore this can take some time. Please consider this when applying for funding as we cannot support projects that have already started.



Please discuss any projects that will cost more than £100,000 with Mair Jones or Jess Dawson before you apply to help you understand what's required/expected for this level of funding. You may be requested to provide a brief proposal document before you submit a full application.

Contact us:

If you have any queries about whether you meet the funding criteria or need any assistance with the application process please contact us using the information below:

Projects over £2,000 (NRS Socio-ec Leads):

Scotland and Wales:	Mair Jones mair.jones@nrservices.uk	07850921669
----------------------------	--	-------------

England:	Jess Dawson jessica.dawson@nrservices.uk	07729080735
-----------------	---	-------------

Good Neighbour Funding (up-to £2,000)

England:

Harwell & Winfrith

Bethany Sear
bethany.sear@nrservices.uk

Bradwell, Dungeness & Sizewell

Kayleigh Ridley
Kayleigh.ridley@nrservices.uk

Hinkley Point A, Oldbury and Berkeley

Sharon Fry
sharon.fry@nrservices.uk 07709719111

Scotland:

Chapelcross & Hunterston A

Claire Aitken
claire.aitken@nrsevrices.uk 07756284680

Wales:

Trawsfynydd & Wylfa

Elin Parry Jones
elin.parryjones@nrservices.uk 07745667176

For any other enquiries please email:
magnox.communications@nrservices.uk

www.nda.gov.uk

NRS working with our communities - GOV.UK (www.gov.uk)