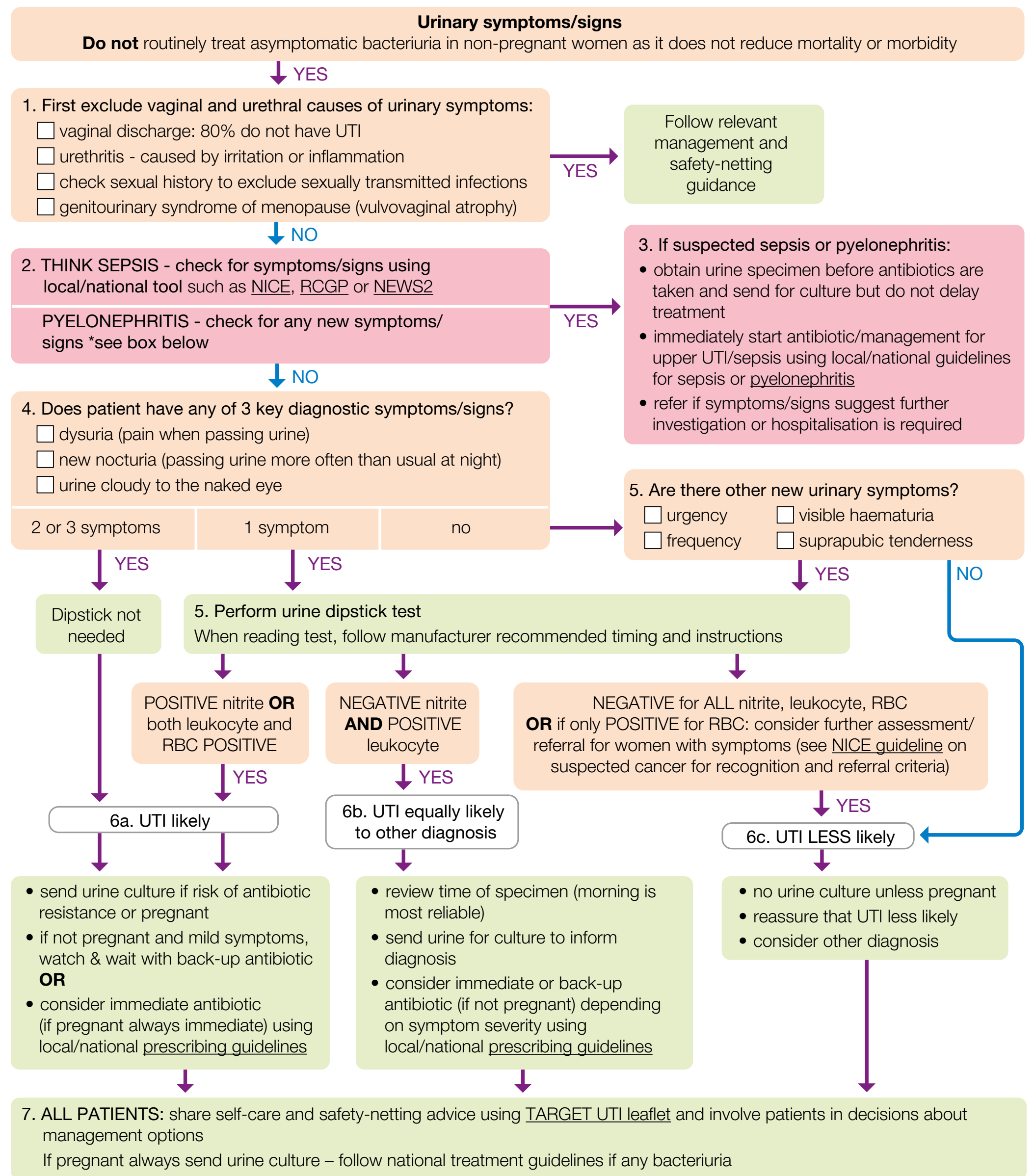


Excludes women with recurrent UTI (2 episodes in last 6 months, or 3 episodes in last 12 months) or who have a urinary catheter. This flowchart will be suitable for some women over 65 years in the community setting. When using this tool, refer to the [Background](#) and the corresponding web text for more information on clinical decision making and target groups.



*Signs of pyelonephritis:
☐ kidney pain/tenderness in back under ribs
☐ flu like illness[†]
☐ shaking chills (rigors) or temperature 37.9°C or above[†]
☐ nausea/vomiting[†]
[†]rule out other causes

KEY:

Suspected sepsis alert

UTI symptom

Action advised

Other advice