

## Air Quality and Dust Monitoring Monthly Report – March 2025

**Buckinghamshire** Council



## Department for Transport

High Speed Two (HS2) Limited has been tasked by the Department for Transport (DfT) with managing the delivery of a new national high speed rail network. It is a non-departmental public body wholly owned by the DfT.

High Speed Two (HS2) Limited,  
Two Snowhill  
Snow Hill Queensway  
Birmingham B4 6GA

Telephone: 08081 434 434

General email enquiries: [HS2enquiries@hs2.org.uk](mailto:HS2enquiries@hs2.org.uk)

Website: [www.gov.uk/hs2](http://www.gov.uk/hs2)

A report prepared by EWCs and MWCCs on behalf of HS2 Ltd.

High Speed Two (HS2) Limited has actively considered the needs of blind and partially sighted people in accessing this document. The text will be made available in full on the HS2 website. The text may be freely downloaded and translated by individuals or organisations for conversion into other accessible formats. If you have other needs in this regard please contact High Speed Two (HS2) Limited.

© High Speed Two (HS2) Limited, 2025, except where otherwise stated.

Copyright in the typographical arrangement rests with High Speed Two (HS2) Limited.

This information is licensed under the Open Government Licence v2.0. To view this licence, visit [www.nationalarchives.gov.uk/doc/open-government-licence/version/2](http://www.nationalarchives.gov.uk/doc/open-government-licence/version/2) **OGI** or write to the Information Policy Team, The National Archives, Kew, London TW9 4DU, or e-mail: [psi@nationalarchives.gsi.gov.uk](mailto:psi@nationalarchives.gsi.gov.uk). Where we have identified any third-party copyright information you will need to obtain permission from the copyright holders concerned.



# Monthly Summary

- 1.1.1 This Summary Report is published in fulfilment of commitments detailed in the High-Speed Rail (London-West Midlands) Environmental Minimum Requirements, Annex 1: Code of Construction Practice, for the nominated undertaker to present the results of dust monitoring undertaken in the Buckinghamshire Council (BC) during March 2025.
- 1.1.2 Figures 1-7 in Appendix A present the current worksites together with the dust monitoring locations.
- 1.1.3 This summary should be read in conjunction with the overview monitoring report available from [www.gov.uk/government/collections/monitoring-the-environmental-effects-of-hs2](https://www.gov.uk/government/collections/monitoring-the-environmental-effects-of-hs2), which highlights the applicable standards and guidance, as well as the air quality and dust monitoring methodologies to be implemented by nominated undertakers throughout construction.
- 1.1.4 The current worksites, as presented in Appendix A, Figures 1-7, include:

## **CVV LTP1 worksite**

- North Embankment Compound: compound operation;
- DWSC Compound: compound operation;
- Haul Road Maintenance: Haul road maintenance;
- ATFS: permanent drainage, soiling and seeding, ATFS access road construction, slab removal;
- Pumping Water Management: pumping water management;
- Satellite Welfares;
- South Abutment: drainage works, South Abutment construction stage 2 – earthworks, yard supporting activities, soiling and seeding works, launching girder platform removal;
- Environmental Maintenance;
- Stockpiling Activity HOAC: stockpile management;
- Deck Finishes Logistics: preparation and operation of storage yards and installation of below deck access provision, traffic management on the deck surface, delivery of parapets, noise barriers, troughs, pipes, steel works and other minor material to the storage yards and deck, installation of access at the top of the deck (HAKI stairs) and finishes support plan;
- Deck Finishes – On-deck Construction: north abutment works, deck waterproofing, SFRC slab construction, North embankment and south embankment noise barriers and foundations, noise barrier and concrete panel installation at north embankment, and masking wall installation at north embankment and south embankment;
- Deck Finishes – In-deck Construction: structural health monitoring;
- Landscaping: advanced works including removal of cofferdam, initial ground drainage including manhole chamber, landscaping, hardstanding removal and tree removal & vegetation clearance, and streetworks – bellmouth road construction; and

- General site activities.

### **Chalfont St Peter Vent Shaft**

- General Site Activities;
- Road Maintenance Works;
- Ground Level Works (External Works Part 2);
- Building Trades: brickworks and internals; and
- Demobilisation.

### **Amersham Vent Shaft**

- General Site Activities;
- External Works Phases 1&2;
- Precast Boundary Wall;
- Internal Works;
- Steel Works and Zinc Cladding; and
- Whielden Land Drainage Works.

### **Chalfont St Giles Vent Shaft**

- General Site Activities;
- Road Maintenance Works;
- External Works Phase 2;
- Building Trades: brickworks and internal works; and
- Demobilisation.

### **Little Missenden Vent Shaft**

- General site activity;
- Tunnel Connection;
- Internal Works;
- Steel Works and Cladding; and
- External Works – Phase 1 and Phase 2.

### **Chesham Vent Shaft**

- General site activity;
- External Works;
- Internal Works;
- Zinc Cladding Works
- Demobilisation; and
- Landscaping.

### **North Portal work site**

- General Plant: Site Activities;
- Tracks Platform;

- Piling Platform Reinstatement;
- Porous Portal Structure;
- North Portal Building;
- Tunnel Support: Batching Plant operation and concrete distribution and tunnel walkway slip forming; and
- Tracks Drainage and Utilities.

### **South Heath**

- South Heath Earthworks & Drainage: Cutting and landscaping;
- General Earthworks: Site operations & support vehicles, stockpile management, surface water management, compounds and general maintenance;
- South Heath drainage: Earthworks for track drainage, stockpile and landscaping bunds drainage and collection chamber construction;
- Utilities: Excavation and construction, installation of utilities and connection of new utilities;
- Great Missenden Compound: Plant and compound maintenance, utilities work and site security at Great Missenden round-about;
- GMI/2 Overbridge: Site security, construction of FRC structure, deck finishes and cutting finishes;
- GMI/12 Overbridge: Site security, excavation & pile cropping, construction of FRC structure, deck finishes and cutting finishes;
- Ground Investigation Works: Borehole drilling, geo-physics investigations and ground investigation and mitigation;
- Site Access Road and Mass Haul Route construction and maintenance: Lime spreading and tarmac & concrete surfacing; and
- Roads utilisation: SAR utilisation and MHR utilisation.

### **North Chilterns Area**

#### Grimms Ditch

- Completion RC capping beams
- Drainage installation
- Concrete finishing works.

#### Chesham Lane, Wendover Bus 55

- Rocky Lane Underbridge deck pour - 235m<sup>3</sup> poured
- Temporary works installation for wingwall stability reinforcement
- Steelwork installation commenced on all four wingwalls
- Doka shutter construction commenced with Reckli inside face design
- Lifting operations ongoing utilising
- Installation of drainage works continuing - Currently ~380 lin.m installed
- Pavement installation completed in various areas from highway box cut to top of subbase
- Utility works ongoing.

### Ellesborough Road

- Continued Low Permeability Wall (LPW) excavation and pre-treatment works.
- Completed Nash Lee Temp. Bridge approaching LPW platform construction.
- Final LPW Protection slabs were poured. Area was de-mobilised and tidied up.
- SAR and Haul Road diversion over the LPW platform was completed.
- Ellesborough Road Temporary Bridge works were completed.

### Nash Lee Road, Nash Lee Lane

- Nash Lee Overbridge (NLOB) A0 (West) Wingwall W1 Base Pour (110 m3), Constructing steelwork for the abutment backwall
- NLOB A3 (East) Wingwall W1 Blinding Pour (26 m3), reinforcement and formwork constructed, and W1 Wingwall Base poured (104 m3)
- NLOB P1 (West) Constructed reinforcement and formwork, omega red installed earthing and bonding, poured the crosshead (110m3)
- NLOB P2 (East) Pored blinding constructed decking formwork for bottom of the crosshead, Constructed reinforcement, omega red installed earthing and bonding.
- ELL/20 - Constructed reinforcement cage for West Impact Wall Middle Base Slab
- AC9 - Installed sumps and graded the formation. Constructed shutters and poured the 1st section of the pipe bedding.

### Bacombe Lane

- Excavate and stone up phase 2 access for shaft POI-002.
- Stockpile relocation and access road construction in preparation of Green Tunnel cut.
- Tunnel Boring Machine delivery and launch from shaft POI-002 - POI-001.

### Grove Farm

- Relocate Sub/Topsoil stockpiles
- Create a mega bund alongside West side of grove farm with topsoil.
- CAB excavate for POI-001.
- Daily monitoring on surface points and boreholes.

### Grove Farm Underbridge

- Reinforcement, peri formwork installation for abutment capping beams
- Concrete pour for abutment capping beams
- Backfill in between abutment capping beams for deck.
- Install blinding around the perimeter
- Install timber/ply decking for the top deck.

### Small Dean Viaduct

- Completion of lowering
- Installation of permanent bearings
- Completion of A0 cheek walls

- Installation of reinforcement
- Installation of formwork
- Casting of walls
- Start of A7 cheek walls
- Installation of reinforcement
- A7 backfill.

#### Wendover Town

- Invert blinding waterproofing progress, 225m total waterproofing complete by CoB March

##### Invert Blinding:

- Invert blinding progress, 200m total blinding constructed by CoB March

##### Offices:

- Office construction progressed
- Internal power and data fit out for offices complete
- Generators delivered and external structures completed

##### PCC:

- LR1160 crawler crane delivered to site and mobilised prior to PCC start date
- PCC segments delivered and installed

#### **Calvert Area**

##### Quainton

- Earthworks - Ongoing
- Utility diversions.

##### Woodlands

- Woodlands Cutting – Dig & Replace and track drainage.
- Woodland Drop Inlet Culvert works.
- River Ray culvert works.
- Aggregate deliveries along the SAR.

##### FCC / School Hill (Calvert)

- School Hill batching plant – production of concrete.
- School Hill culvert – waterproofing and technical backfill.
- School Hill Overbridge – dig and replace (D&R) under structure and piling platform completed. Excavation and technical backfill.
- Calvert Green overbridge – FRC works.
- Aggregate deliveries along the site access road (SAR).
- Calvert Cutting earthworks – drainage and general maintenance activities.
- CBGM batching plant – production of CBGM.

Other works ongoing in Calvert not within proximity (greater than 1km) to dust monitors include:

- West Street overbridge
- Portway culvert
- Perry Hill overbridge
- EWR culvert
- IMD West culvert
- IMD East Culvert
- Addison Road highway
- Shepherds Furze earthworks (stockpile maintenance)      Shepherds Furze culvert
- MCJ4 chord earthworks
- Infrastructure maintenance depot (IMD) earthworks
- Secant retaining wall
- Bat mitigation structure
- SCL/13 overbridge
- FCC Cell 6 earthworks (stockpile maintenance)
- FCC Access Road Retaining Wall
- Sheephouse Wood North culvert
- Greatmoor no. 4 culvert and CAG2 underbridge
- Megaditch retaining wall
- Greatmoor no. 3 culvert
- GUN28 overbridge
- QUA36 overbridge
- Hills farm earthworks (stockpile maintenance)
- Edgcott Road overbridge
- QUA26 Underbridge
- Doddershall Embankment earthworks
- Doddershall No. 6 and No. 7 Culvert
- Quainton cutting
- QUA28 overbridge
- Station Road overbridge
- Station Road Network Rail overbridge.

## **Twyford to Greatworth**

### Turweston

- Turweston Green Overbridge construction: Reinforcement installation for deck and diaphragm, deck pour, structural backfill behind the abutments.
- Turweston Viaduct: Completion of Lowering & bearing installation. Eiffage Metal Site demobilization. Installation of Concrete slabs on the deck. Installation of reinforcement for stitches.
- Earthworks: Landscape bund fill, Lime Stabilisation, Bulk excavation and movement.

### School End and Hermitage

- Chetwode Cutting Landscape Bund Construction west-side.
- School End and CHW18 Overbridges Parapet Deliveries and Installation
- School End Highways- East and West abutment structural backfill

- Chetwode Cutting South- Bulk Dig
- Manthorne Farm dismantling of Chetwode Grange compound and construction of temporary access.

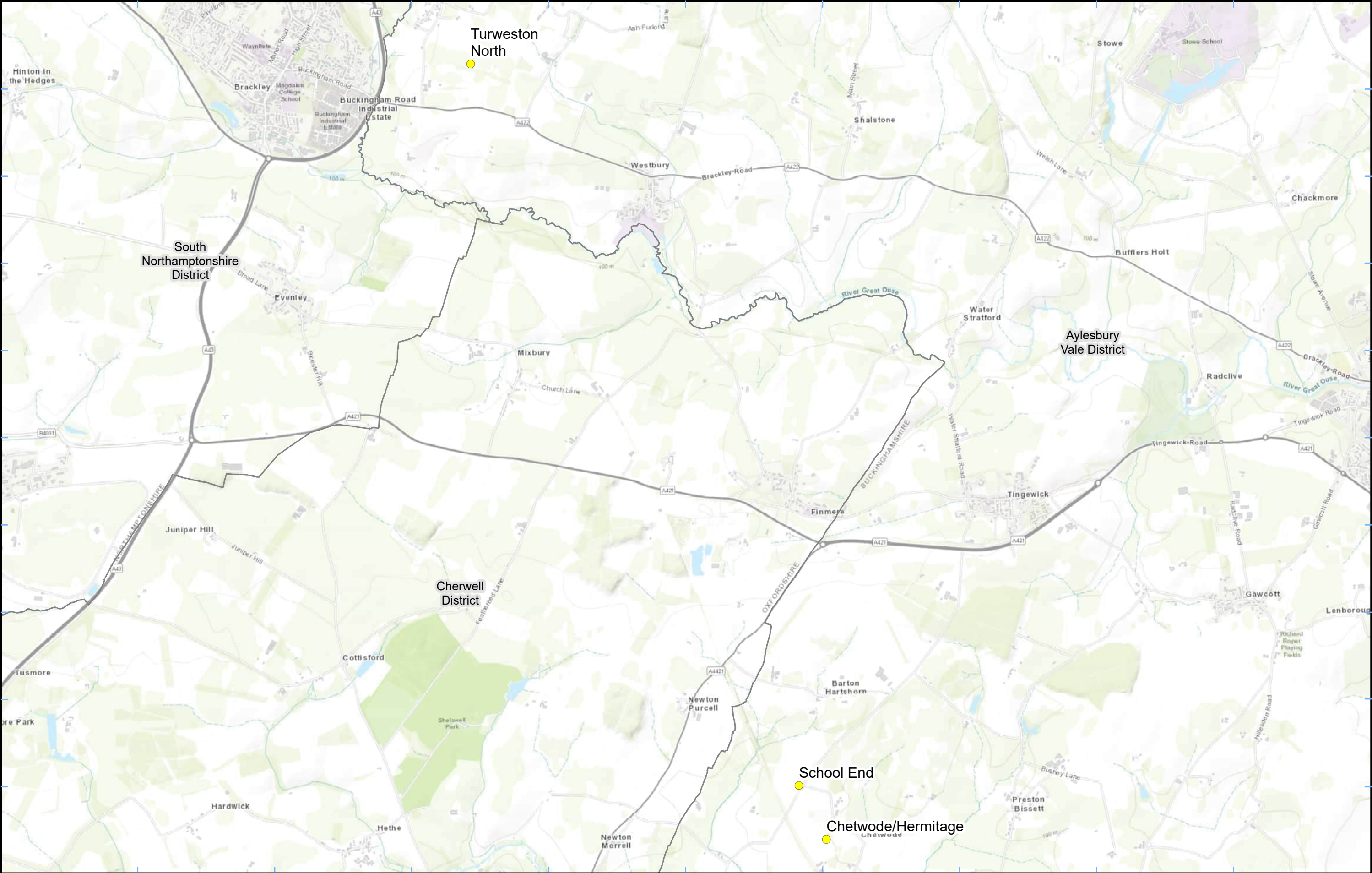
#### Twyford

- Twyford Viaduct- South Side excavation of cofferdams A0 and P1, North Side- BK piling.
- Twyford Embankment- CSS stabilisation.
- Hauling of Material
- Stockpiling
- SAR and MHR Maintenance.
- Devegetation.

- 1.1.5 Thirty-three (33) dust monitors are installed around these worksites, where works are underway. These sites returned a medium dust risk rating.
- 1.1.6 Dust monitoring locations and results are presented in Appendix B, Table 1, together with line charts of monthly data from each dust monitor presented in Figure 8. All continuous dust monitoring is undertaken using indicative monitors. Despite being Environment Agency (MCERTS) certified, indicative monitors carry a higher level of uncertainty than reference monitors, and therefore cannot be strictly compared with Air Quality Standards for human health and the environment. The purpose of the monitoring undertaken is to ensure the effectiveness of the on-site mitigation.
- 1.1.7 The trigger level for PM<sub>10</sub> concentrations of 190 µg/m<sup>3</sup>, measured as a 1-hour mean, in accordance with the updated guidance document '*Guidance on Monitoring in the Vicinity of Demolition and Construction Sites – (December 2018)*' has been applied.
- 1.1.8 No (0) dust trigger alerts were recorded during the monitoring period (March 2025).
- 1.1.9 Data capture was below 90% for multiple monitors due to:
- Woodlands dust monitor - No data capture from 22nd to 27th March due to noise monitor fault and was replaced on 27th March.
  - AMER-AQMP1 monitor suffered from a SIM connection issue, resolved on 18/03.
- 1.1.10 There were no (0) complaints received during the reporting period (March 2025).

# Appendix A – Worksite and Dust Monitoring Locations

Figures 1-7: Worksite and Monitoring locations within BC



**Legend**

Dust Monitor

District Borough Unitary Boundaries

Service Layer Credits: Sources: Esri, HERE, Garmin, Intermap, increment P Corp., GEBCO, USGS, FAO, NPS, NRCAN, GeoBase, IGN, Kadaster NL, Ordnance Survey, Esri Japan, METI, Esri China (Hong Kong), (c) OpenStreetMap contributors, and the GIS User Community

Map Number

Map Name

Monitoring Locations  
In BC (Sheet 1)

Buckinghamshire County

hs2

Registered in England. Registration number 06791686.  
Registered office: 2 Snowhill, Queensway,  
Birmingham B4 6QA.

© Crown copyright and database rights 2023.  
Ordnance Survey Licence Number 100049190.

Doc Number:

↑

N

Scale at A3: 1:34,000

0

340

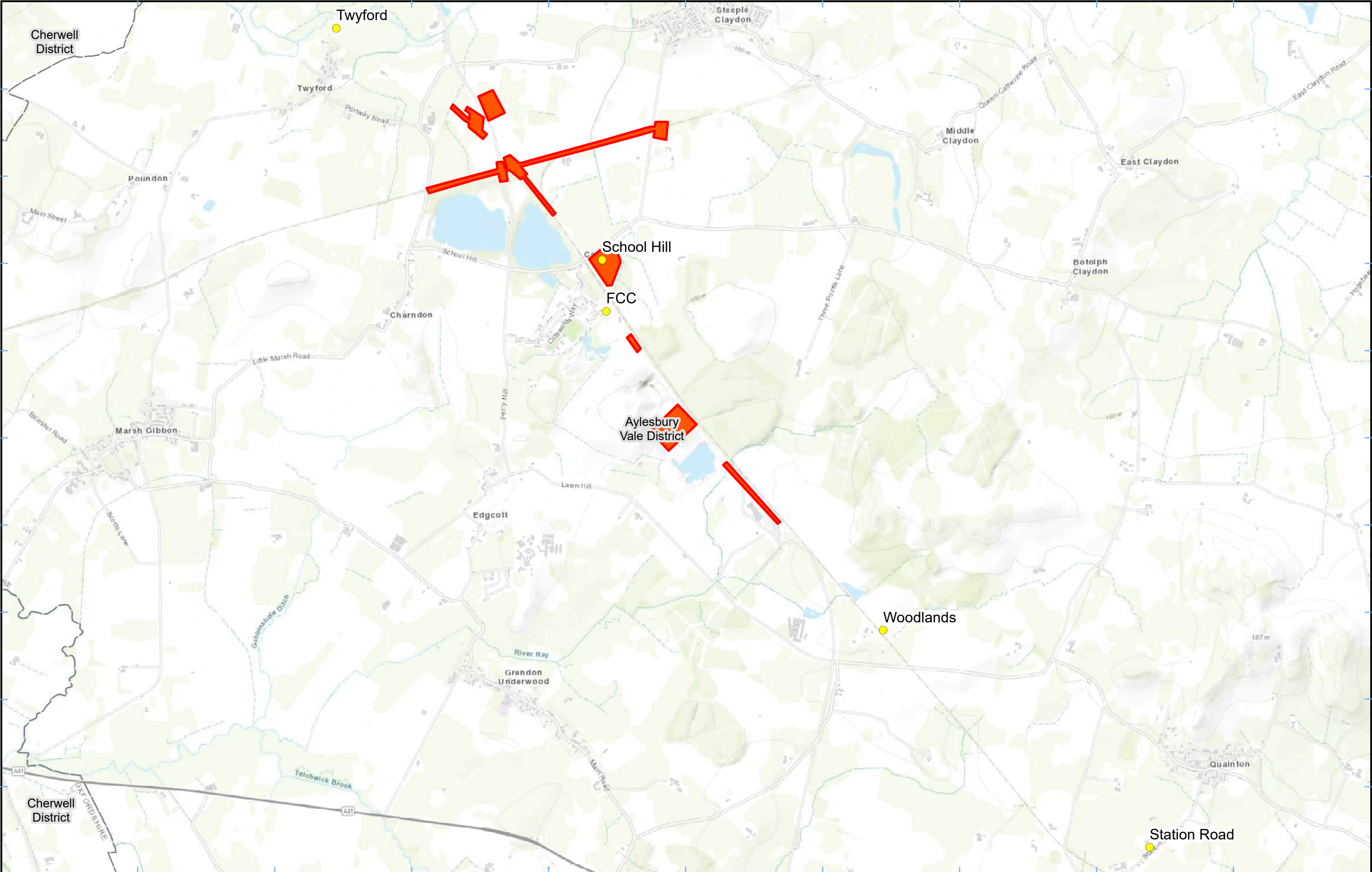
680

1,020

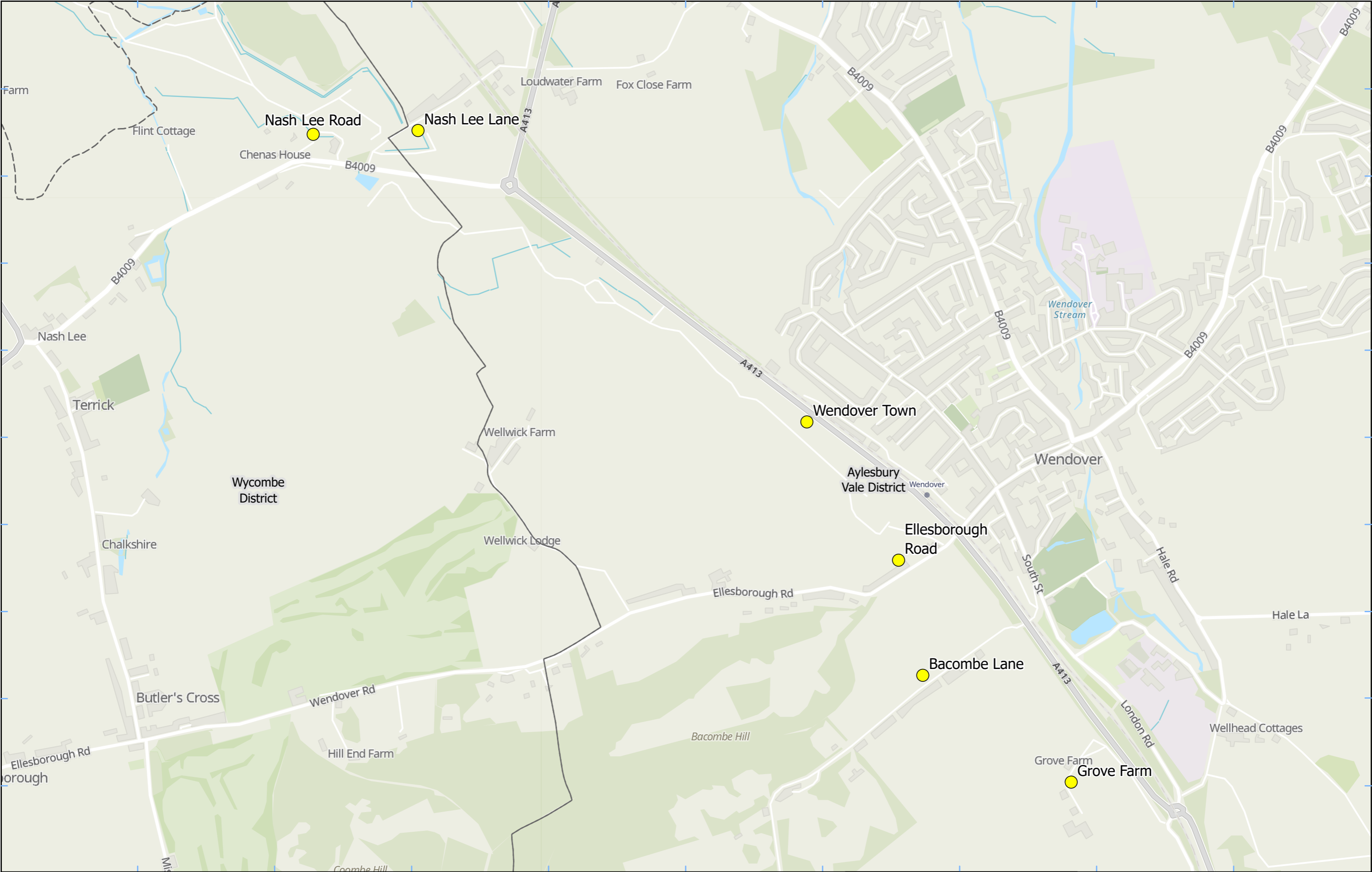
1,360

Metres

Date: 06/07/23



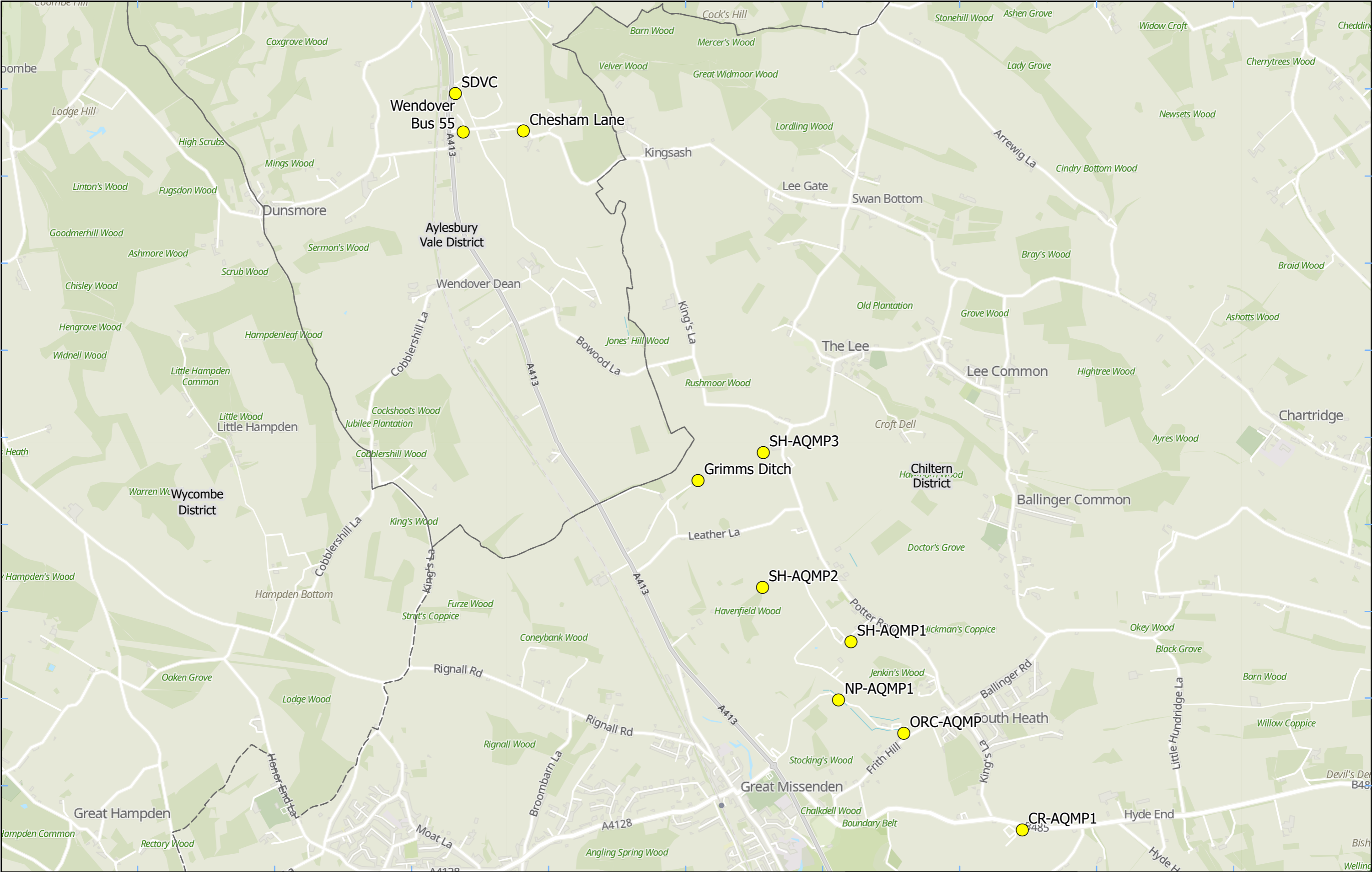
<b>Legend</b> <div><div></div> Dust monitor</div> <div><div></div> District Borough Unitary Boundaries</div> <div><div></div> Worksite</div> <small>Service Layer Credits: Sources: Esri, HERE, Garmin, Intermap, increment P Corp., GEBCO, USGS, FAO, NPS, NRCAN, GeoBase, IGN, Kadaster NL, Ordnance Survey, Esri Japan, METI, Esri China (Hong Kong), (c) OpenStreetMap contributors, and the GIS User Community</small>	Map Number	<div><div>HS2 Ltd accept no responsibility for any circumstances, which arise from the reproduction of this map after alteration, amendment or abbreviation or if it is issued in part or issued incomplete in any way.</div><div></div></div> <div>Registered in England. Registration number 06791686. Registered office: 2 Snowhill, Queensway, Birmingham B4 6GA.</div> <div>© Crown copyright and database rights 2023. Ordnance Survey Licence Number 100049190.</div> <div>Doc Number:</div>
	Map Name	
	Buckinghamshire County	<div>Scale at A3: 1:32,000</div> <div><div><div></div><div>0</div><div>330</div><div>660</div><div>990</div><div>1,320</div></div><div>Metres</div></div> <div>Date: 18/05/23</div>



<b>Legend</b>  Dust Monitor  District Borough Unitary Boundaries	Map Number	 HS2 Ltd accept no responsibility for any circumstances, which arise from the reproduction of this map after alteration, amendment or abbreviation or if it is issued in part or issued incomplete in any way. 
	Map Name	
	<b>Monitoring Locations In BC (Sheet 3)</b>	
Buckinghamshire Council		Doc Number: <span style="float: right;">Date: 02/07/24</span>

Service Layer Credits: GB Topographic: Contains OS data © Crown Copyright and database right 2023  
Contains data from OS Zoomstack

Registered in England. Registration number 06791686.  
Registered office: 2 Snowhill, Queensway,  
Birmingham B4 6GA.  
© Crown copyright and database rights 2024.  
Ordnance Survey Licence Number 100049190.



<p><b>Legend</b></p> <p> Dust Monitor</p> <p> District Borough Unitary Boundaries</p> <p><small>Service Layer Credits: GB Topographic: Contains OS data © Crown Copyright and database right 2023 Contains data from OS Zoomstack</small></p>	<table><tr><td>Map Number</td></tr><tr><td>Map Name</td></tr><tr><td><b>Monitoring Locations In BC (Sheet 4)</b></td></tr><tr><td><b>Buckinghamshire County</b></td></tr></table>	Map Number	Map Name	<b>Monitoring Locations In BC (Sheet 4)</b>	<b>Buckinghamshire County</b>	<table><tr><td><p><small>HS2 Ltd accept no responsibility for any circumstances, which arise from the reproduction of this map after alteration, amendment or abbreviation or if it is issued in part or issued incomplete in any way.</small></p><p><small>Registered in England. Registration number 06791686. Registered office: 2 Snowhill, Queensway, Birmingham B4 6GA.</small></p><p><small>© Crown copyright and database rights 2024. Ordnance Survey Licence Number 100049190.</small></p><p><b>Doc Number:</b></p></td><td><p><b>Scale at A3: 1:23,000</b></p><p><small>Metres</small></p><p><b>Date: 24/09/24</b></p></td></tr></table>	 <p><small>HS2 Ltd accept no responsibility for any circumstances, which arise from the reproduction of this map after alteration, amendment or abbreviation or if it is issued in part or issued incomplete in any way.</small></p> <p><small>Registered in England. Registration number 06791686. Registered office: 2 Snowhill, Queensway, Birmingham B4 6GA.</small></p> <p><small>© Crown copyright and database rights 2024. Ordnance Survey Licence Number 100049190.</small></p> <p><b>Doc Number:</b></p>	 <p><b>Scale at A3: 1:23,000</b></p>  <p><small>Metres</small></p> <p><b>Date: 24/09/24</b></p>
Map Number								
Map Name								
<b>Monitoring Locations In BC (Sheet 4)</b>								
<b>Buckinghamshire County</b>								
 <p><small>HS2 Ltd accept no responsibility for any circumstances, which arise from the reproduction of this map after alteration, amendment or abbreviation or if it is issued in part or issued incomplete in any way.</small></p> <p><small>Registered in England. Registration number 06791686. Registered office: 2 Snowhill, Queensway, Birmingham B4 6GA.</small></p> <p><small>© Crown copyright and database rights 2024. Ordnance Survey Licence Number 100049190.</small></p> <p><b>Doc Number:</b></p>	 <p><b>Scale at A3: 1:23,000</b></p>  <p><small>Metres</small></p> <p><b>Date: 24/09/24</b></p>							



**Legend**

Dust Monitor District Borough Unitary Boundaries

Worksite

Service Layer Credits: Sources: Esri, HERE, Garmin, Intermap, increment P Corp., GEBCO, USGS, FAO, NPS, NRCAN, GeoBase, IGN, Kadaster NL, Ordnance Survey, Esri Japan, METI, Esri China (Hong Kong), (c) OpenStreetMap contributors, and the GIS User Community

Map Number
Map Name
<b>Worksite and Monitoring Locations In BC (Sheet5)</b>
<b>Buckinghamshire County</b>

HS2 Ltd accept no responsibility for any circumstances, which arise from the reproduction of this map after alteration, amendment or abbreviation or if it is issued in part or issued incomplete in any way.

Registered in England. Registration number 06791686.  
Registered office: 2 Snowhill, Queensway,  
Birmingham B4 6GA.

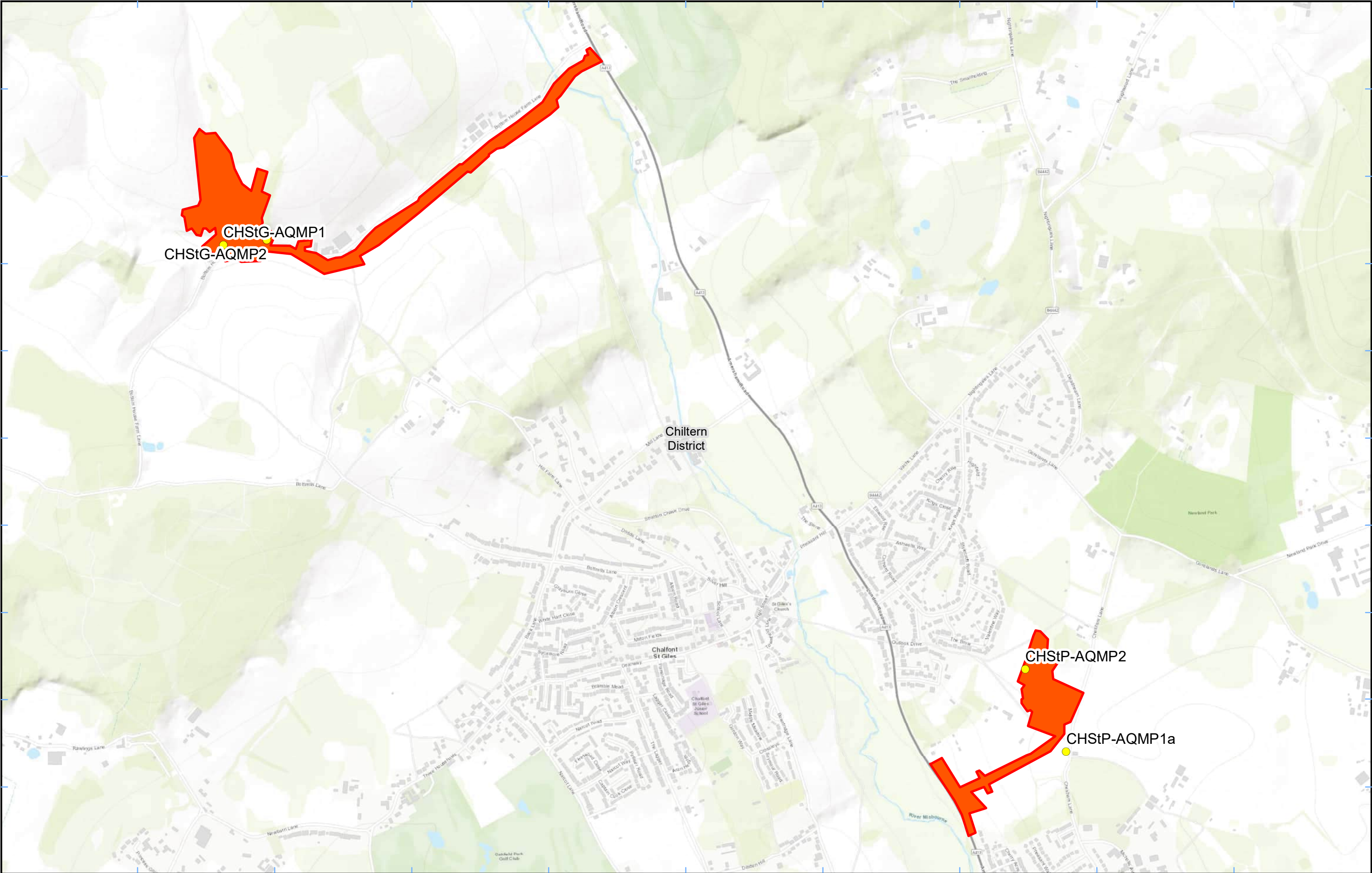
© Crown copyright and database rights 2022.  
Ordnance Survey Licence Number 100049190.

**Doc Number:**

Scale at A3: 1:11,000

0 110 220 330 440  
Metres

**Date: 22/02/22**




**Legend**

 Dust Monitor  District Borough Unitary Boundaries

 Worksite

Service Layer Credits: Sources: Esri, HERE, Garmin, Intermap, increment P Corp., GEBCO, USGS, FAO, NPS, NRCAN, GeoBase, IGN, Kadaster NL, Ordnance Survey, Esri Japan, METI, Esri China (Hong Kong), (c) OpenStreetMap contributors, and the GIS User Community

Map Number
Map Name
<b>Monitoring Locations In BC (Sheet 6)</b>
<b>Buckinghamshire County</b>




HS2 Ltd accept no responsibility for any circumstances, which arise from the reproduction of this map after alteration, amendment or abbreviation or if it is issued in part or issued incomplete in any way.

Registered in England. Registration number 06791686.  
Registered office: 2 Snowhill, Queensway,  
Birmingham B4 6GA.

© Crown copyright and database rights 2022.  
Ordnance Survey Licence Number 100049190.

**Doc Number:**



**Scale at A3: 1:12,000**

0 120 240 360 480  
Metres

**Date: 22/02/22**



<b>Legend</b> <div><div></div> Dust Monitor</div> <div><div></div> District Borough Unitary Boundaries</div> <div><div></div> Worksite</div> <small>Service Layer Credits: Sources: Esri, HERE, Garmin, Intermap, increment P Corp., GEBCO, USGS, FAO, NPS, NRCAN, GeoBase, IGN, Kadaster NL, Ordnance Survey, Esri Japan, METI, Esri China (Hong Kong), (c) OpenStreetMap contributors, and the GIS User Community</small>	Map Number	<div><div>HS2 Ltd accept no responsibility for any circumstances, which arise from the reproduction of this map after alteration, amendment or abbreviation or if it is issued in part or issued incomplete in any way.</div><div>Registered in England. Registration number 06791686. Registered office: 2 Snowhill, Queensway, Birmingham B4 6GA.</div><div>© Crown copyright and database rights 2023. Ordnance Survey Licence Number 100049190.</div></div>
	Map Name	
	Buckinghamshire County	<div><div>Scale at A3: 1:5,000</div><div><div>050100150200</div><div>Metres</div></div></div> <div><div>Doc Number:</div><div>Date: 12/10/23</div></div>

## Appendix B – Dust Monitoring Results

Table 1: Dust Monitoring Locations and Results

Monitoring site ID	Coordinates (X,Y)	Location description	Dust risk rating for site	Monitoring site active during period	Change to site since previous period report	Mean 1-hour PM <sub>10</sub> concentration (µg/m <sup>3</sup> )	Minimum 1-hour PM <sub>10</sub> concentration (µg/m <sup>3</sup> )	Maximum 1-hour PM <sub>10</sub> concentration (µg/m <sup>3</sup> )	Number of 1-hour periods exceeding trigger level of 190 µg/m <sup>3</sup>	Data capture (%)
CVW-AQMP1	503612, 189846	On the north boundary of LTP1	M	Yes	No	16.3	1.0	99.0	0	99.5
CHStP-AQMP1a	500093, 192996	Relocated from CHStP-NMP1 to site-boundary outside residence	M	Yes	Yes	16.5	1.0	101.0	0	98.3
CHStP-AQMP2	499951, 193282	On the western boundary of the site	M	Yes	Yes	16.4	1.0	96.0	0	98.3
AMER-AQMP1	495367, 196722	On the north-eastern boundary of Amersham	M	Yes	Yes	13.4	1.0	44.0	0	43.1
AMER-AQMP2	495263, 196590	On the south-western boundary of Amersham	M	Yes	Yes	14.6	1.0	92.0	0	98.3
CHStG-AQMP1	497170, 194752	On the southern boundary close to Hobbs Hole Cottage	M	Yes	Yes	14.9	1.0	101.0	0	99.9
CHStG-AQMP2	497320, 194770	On southern boundary next to carpark	M	Yes	Yes	14.2	1.0	99.0	0	98.9
LMS-AQMP1	493190, 198848	On the south-west of the site	M	Yes	Yes	15.2	1.0	99.0	0	99.7
LMS-AQMP2	493407, 198731	On the south-east of the site	M	Yes	Yes	15.4	1.0	102.0	0	97.8
CR-AQMP1	491291, 201143	On the Chesham Road Vent Shaft	M	Yes	Yes	16.2	1.0	96.0	0	98.1

Monitoring site ID	Coordinates (X,Y)	Location description	Dust risk rating for site	Monitoring site active during period	Change to site since previous period report	Mean 1-hour PM <sub>10</sub> concentration (µg/m <sup>3</sup> )	Minimum 1-hour PM <sub>10</sub> concentration (µg/m <sup>3</sup> )	Maximum 1-hour PM <sub>10</sub> concentration (µg/m <sup>3</sup> )	Number of 1-hour periods exceeding trigger level of 190 µg/m <sup>3</sup>	Data capture (%)
ORC-AQMP	490503, 201786	Orchard Cottage South-eastern Site Boundary	M	Yes	Yes	15.1	1.0	93.0	0	98.1
NP-AQMP1	490069, 202008	North Portal Site Entrance	M	Yes	Yes	13.0	1.0	100.0	0	98.3
SH-AQMP1	490152, 202395	Park Farm	M	Yes	Yes	32.9	8.7	108.7	0	99.7
SH-AQMP2	489564, 202757	King's Lane	M	Yes	Yes	12.1	6.8	59.3	0	91.1
SH-AQMP3	489569, 203654	Leather Lane	M	Yes	Yes	42.6	9.5	142.2	0	99.6
School Hill (CAL-AQMP2) - Dust	469003, 224740	School Hill Compound	M	Yes	Yes	15.3	1.0	95.0	0	99.7
School End - Dust	463666, 230049	School End, Chetwode	M	Yes	Yes	15.0	1.0	93.0	0	100.0
Grimms Ditch - Dust	489135, 203468	Leather Lane, The Lee, South Heath	M	Yes	Yes	12.5	1.0	81.0	0	99.7
Chesham Lane - Dust	487974, 205794	Chesham Lane, The Lee, Wendover	M	Yes	Yes	15.1	1.0	99.0	0	100.0
Wendover Bus 55 - Dust	487574, 205787	Chesham Lane, The Lee, Wendover	M	Yes	Yes	13.6	1.0	102.0	0	100.0
Twyford - Dust	466544, 226883	Twyford, Buckinghamshire	M	Yes	Yes	14.6	1.0	99.0	0	100.0
Chetwode/Hermitage - Dust	463936, 229521	Hermitage, Chetwode	M	Yes	Yes	16.7	1.0	94.0	0	100.0
Turweston North - Dust	460439 , 237140	Turweston, Buckinghamshire	M	Yes	Yes	74.7	39.0	153.0	0	100.0
FCC - Dust	469042 , 224263	Adjacent Red Kite View, Calvert	M	Yes	Yes	15.1	1.0	94.0	0	100.0
Ellesborough Road - Dust	486458 , 207550	Ellesborough Road, Wendover	M	Yes	Yes	14.8	1.0	92.0	0	100.0

Monitoring site ID	Coordinates (X,Y)	Location description	Dust risk rating for site	Monitoring site active during period	Change to site since previous period report	Mean 1-hour PM <sub>10</sub> concentration (µg/m <sup>3</sup> )	Minimum 1-hour PM <sub>10</sub> concentration (µg/m <sup>3</sup> )	Maximum 1-hour PM <sub>10</sub> concentration (µg/m <sup>3</sup> )	Number of 1-hour periods exceeding trigger level of 190 µg/m <sup>3</sup>	Data capture (%)
Nash Lee Road - Dust	484766 , 208782	Nash Lee Lane (west)	M	Yes	Yes	15.4	1.0	93.0	0	100.0
Nash Lee Lane - Dust	485069 , 208793	Nash Lee Lane (east)	M	Yes	Yes	16.2	1.0	108.0	0	100.0
Bacombe Lane – Dust	486528 , 207217	Bacombe Lane, Wendover	M	Yes	Yes	85.7	43.0	165.0	0	96.5
SDVC – Dust	487522, 206043	Small Dean Viaduct, London Road	M	Yes	Yes	15.5	1.0	93.0	0	100.0
Station Road – Dust	474068, 219307	Station Road, Quainton	M	Yes	Yes	16.1	1.0	102.0	0	100.0
Wendover Town - Dust	486193, 207950	Wendover Bypass, Wendover	M	Yes	Yes	15.5	1.0	103.0	0	100.0
Woodlands - Dust	471603, 221315	Station Rd, Quainton, Woodlands Farmhouse	M	Yes	Yes	13.4	1.0	89.0	0	84.8
Grove Farm	486957, 206908	Grove Farm, London Road, Wendover	M	Yes	Yes	15.2	1.0	98.0	0	99.9

Figure 8: Continuous dust 1-hour mean indicative PM<sub>10</sub> concentration for all dust monitors

