

HS2



Phase One Heritage Sub-group

May 2025

Agenda

1

Welcome & introductions

2

Values moment

3

Post excavation: HS2 introduction

4

Post excavation: Access +

5

General HS2 Update

6

HS2 Hist Env team updates

7

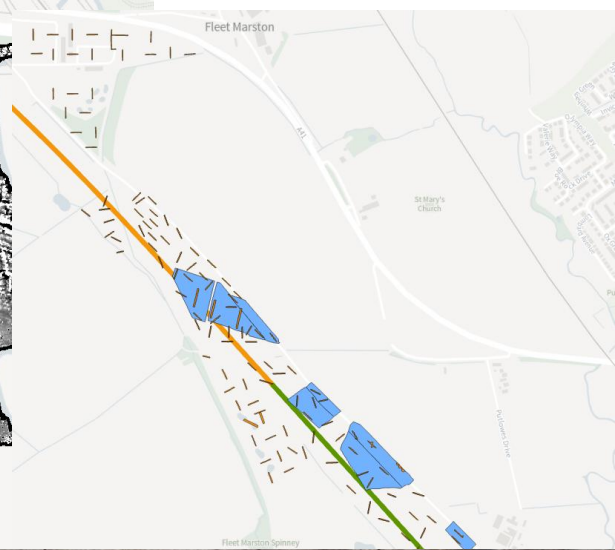
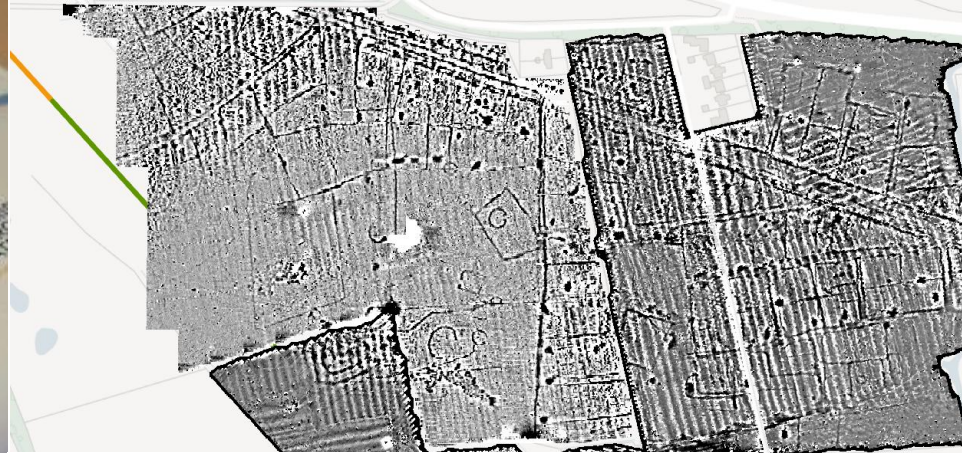
Closing remarks/AOB

HS2

Post Excavation Services



The journey



High Speed Rail (London - West Midlands) Act 2017

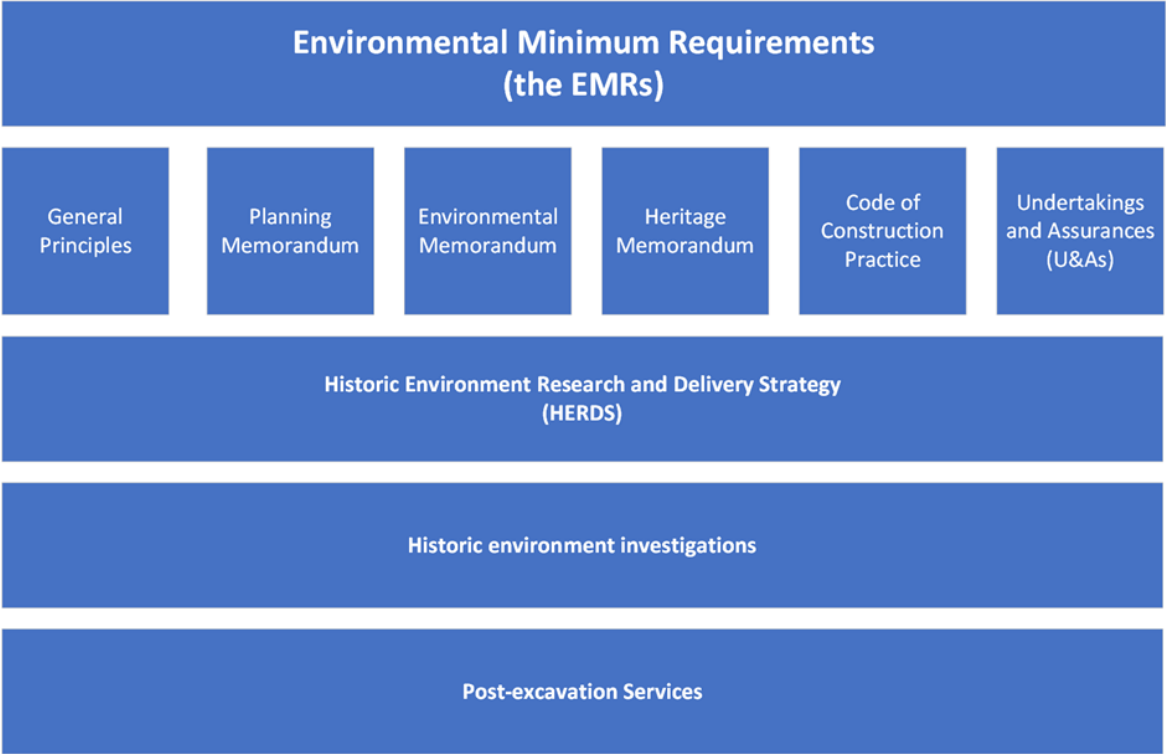


Post-excavation Services (HGC14)

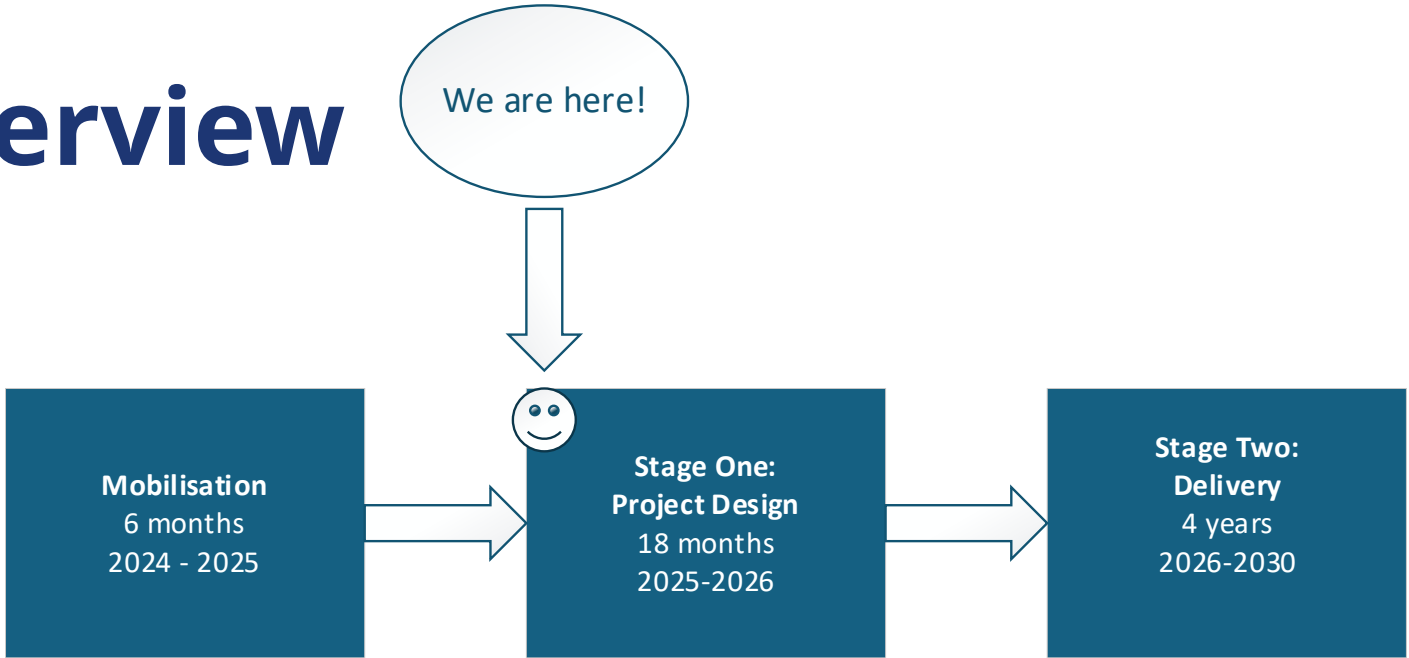
The **EMRs** require HS2 to undertake a programme of investigation and recording [mostly done] to advance understanding of the past, including a post-excavation programme of historic environment assessment [mostly done], analysis, dissemination, publication and archiving [to do].

Post-excavation Services will deliver the final stage of historic environment obligations under the EMRs.

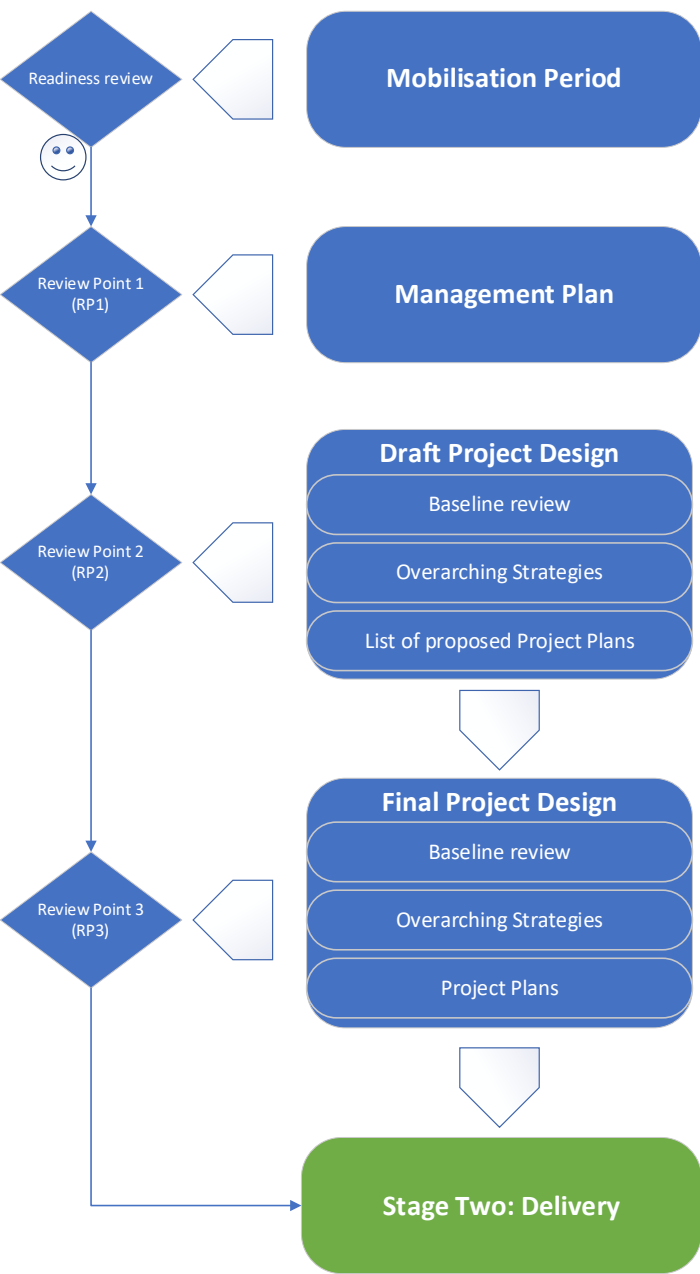
Continuation of the HERDS process to focus the post-excavation phase on delivering valuable outcomes, notably knowledge creation, engagement with people and a lasting archival and skills legacy.



Overview



| Supplier | Access+ Lead organisation: Headland Archaeology (UK) Ltd |
|----------------------|--|
| Mobilisation | 16 th September 2024 – 15 th March 2025 (6 months) |
| Contract Duration | 6 (+2 option) |
| Project Design Stage | 2 years – ends September 2026 |
| Delivery Stage | September 2026 – September 2030 |



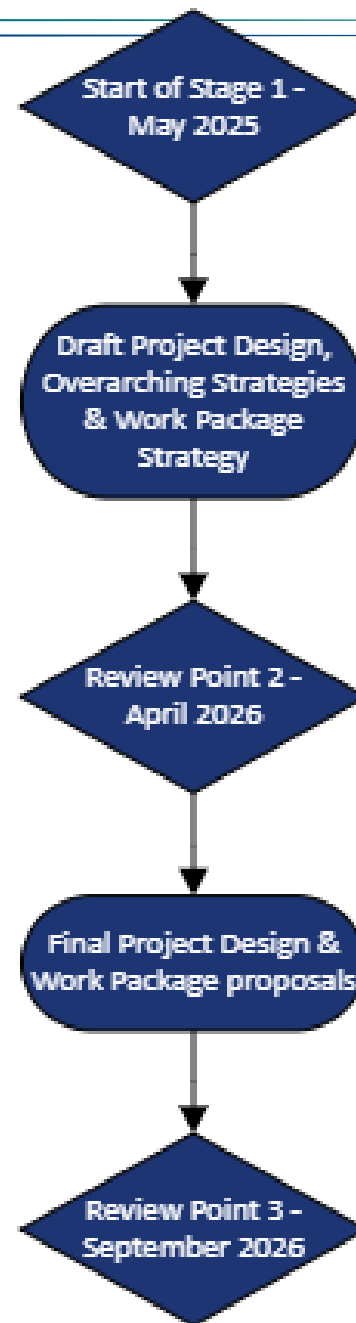
Access+



Our Goals

- The HS2 Post-Excavation Services Contract presents an unprecedented opportunity to explore the country's past. The goal of the project is to enhance knowledge by:
 - Contributing to key questions about prehistory and history
 - Testing interpretative concepts and methodological techniques
 - Challenging the way that we investigate and interpret the past
- We are responsible for delivering HS2 commitments, focusing on clear benefits for communities along the route, stakeholders and the wider public, and on reaching the widest possible audience
- We shall agree jointly with HS2 which are the highly valuable outputs that will form the foundation of the project scope

Key Dates



High Speed Rail (London-West Midlands) Environmental Minimum Requirements Annex 3: Heritage Memorandum

2.1.2 the nominated undertaker will deliver a programme of heritage mitigation, including but not limited to investigation, recording, **analysis, reporting and archiving**.

3.2.1 A Heritage Sub-group to the Planning Forum has been set up and this group will meet throughout the design and construction period.

The purpose of the Heritage Subgroup is to provide the framework for effective engagement and information-sharing on high-level technical heritage matters.

Post-excavation Services key stakeholders

Phase One heritage subgroup to the Planning Forum comprises:

Historic England representatives,
Local Planning Authority
archaeological officers and
conservation officersalong the
line of route

The purpose

- To provide the framework for effective engagement and information-sharing on high-level technical heritage matters

The objectives

- To enable engagement on high-level technical heritage matters between the nominated undertaker, Historic England and local authorities
- To discuss and agree route-wide heritage principles and practices to be applied, as appropriate, at the project level

LPA archaeological officers and conservation officers

The Consultant holds discussions with local authority archaeological and/or conservation officers in the development of Project Plans (**Part B**, Section 12).

The results of those discussions are fed back to the Employer and incorporated into the Project Plans, where appropriate.

Historic England

- **The Employer** has a route-wide Third-Party Service Level Agreement (TPSLA) with Historic England to ensure the implementation of effective research, investigation and mitigation of the historic environment.
- **The Consultant** works collaboratively with HE in the development of Project Plans and throughout the delivery of Work Packages.
- **The Consultant** collaborates with HE on feeding back results of the analyses to the Regional Research Frameworks database.

Approach to consultation Stage 1



The post excavation project design scope will include: Consultation on draft project design

- Overarching strategies: The Overarching Strategies sit above Project Plans (Section 12) to ensure a coherent and consistent Project Design for both Phase One and Phase 2a that addresses the Headline and Specific Objectives set out in the HERDS. The Overarching Strategies govern the delivery of all Project Plans within the Consultant's Project Design.
- Draft Project Design: The draft Project Design includes a list of proposed Project Plans, descriptions, outputs, how they interrelate, links to the Overarching Strategies and how they contribute to the Headline and Specific Objectives in the HERDS
- Final Project Design: The Consultant prepares final Project Plans to be submitted as part of the final Project Design. The final Project Plans are submitted for the Employer's acceptance at RP3

Approach to consultation Stage 1



The post excavation project design scope will include:

Overarching strategies:

The Overarching Strategies sit above Project Plans (Section 12) to ensure a coherent and consistent Project Design for both Phase One and Phase 2a that addresses the Headline and Specific Objectives set out in the HERDS.

The Overarching Strategies govern the delivery of all Project Plans within the Consultant's Project Design.

Draft Project Design:

The draft Project Design includes a list of proposed Project Plans, descriptions, outputs, how they interrelate, links to the Overarching Strategies and how they contribute to the Headline and Specific Objectives in the HERDS

Due to the wide-ranging nature of components in the Project Design documentation... we would like to propose that members of the heritage subgroup elect to be consulted on strategies and project plans by individually signing up for consultation....

A list of strategies and project plan titles (with review dates) shall be shared and a poll taken with group members in Autumn 2025

This will allow subgroup members to manage their availability to review and comment on proposals

Time frames for consultations will be driven by the overall programme, and we shall need to adhere to agreed response periods to ensure the project is delivered on time...

Approach to consultation Stage 2

The delivery stage of the post excavation project will include:

Outputs for dissemination: A peer review panel will be established for key outputs for publication arising from project plans

Events and engagement: HERDS events, exhibitions and other outputs

As set out for **Stage 1**, sub-group members shall be invited to elect to take part in peer review and engagement activities as suits their special interest and available resources....

Stage Two Progress Reporting

Implement Project Plans (October 2026 – September 2030) – quarterly updates provided to Heritage subgroup

HS2 Post-excavation outline programme

• Year 1 • Year 2 • Year 3 • Year 4 • Year 5 • Year 6

• Contract Period

Sept 24-
Sept 25

Sept 25 –
Sept 26

Sept 26 –
Sept 27

Sept 27 –
Sept 28

Sept 28 –
Sept 29

Sept 29 –
Sept 30

• Mobilisation

M

• Project Design

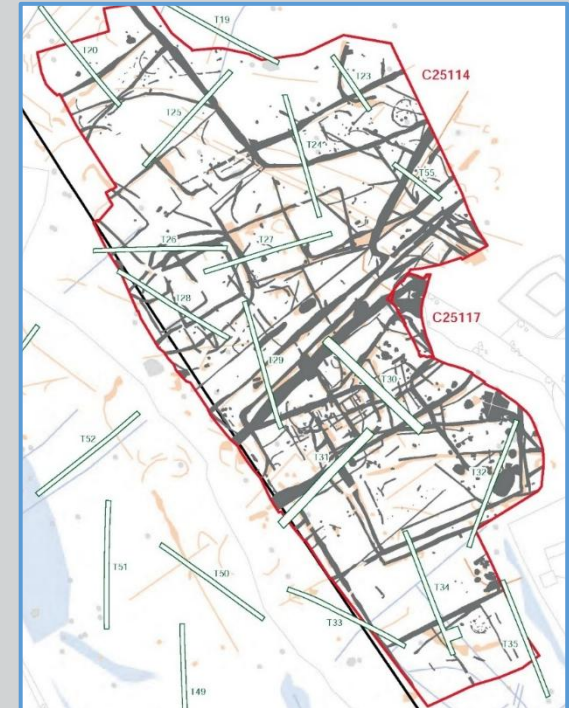
Project Design

• Project Delivery

Project Delivery

Stage 1

Stage 2



Work to date (October 24–April 25)

Archive Consolidation

Access

Working on behalf of

HS2

HGC14 Archive Plan - Mobilisation Phase

Document no: HGC14-HAU-EV-PLN-000-000004

| Revision | Author | Reviewed by | Approved by | Date approved | Reason for revision |
|----------|-------------------------------|-------------------------|-------------|---------------|---------------------|
| C01 | Charlotte Self Laura James | Alex Smith Emma West | Jay Carver | 12.02.2025 | Fit for Acceptance |

Security classification: OFFICIAL

Handling Instructions: None

HS2 Ltd - Code 1 - Accepted

Access

Working on behalf of

HS2

HGC14 Logistics Plan

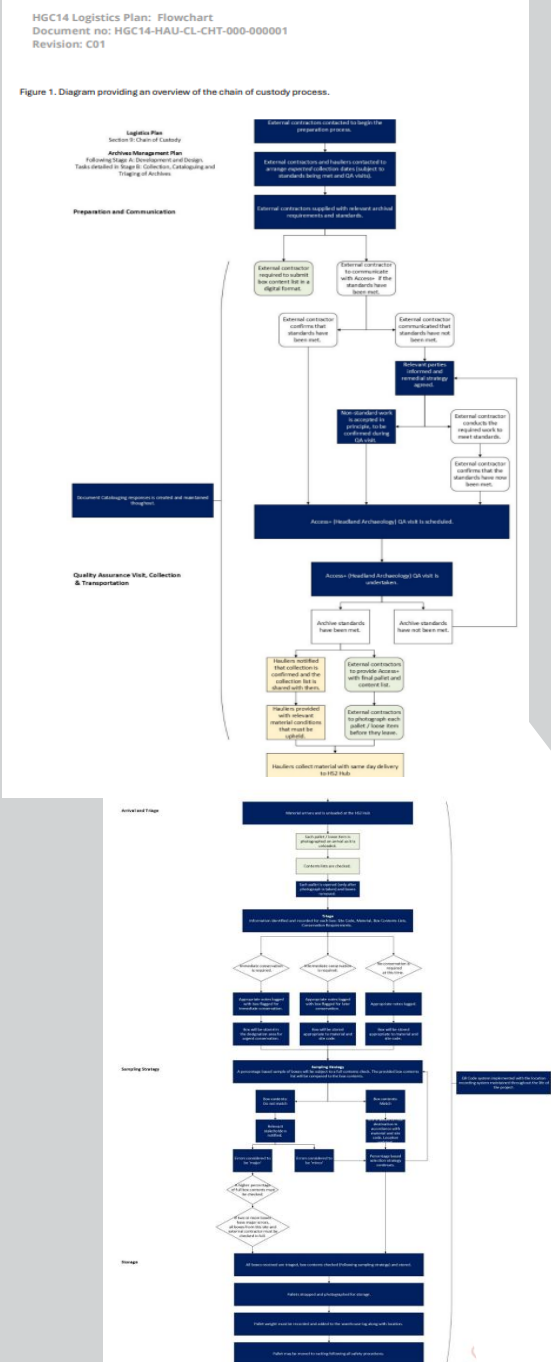
Document no: HGC14-HAU-CL-PLN-000-000001

| Revision | Author | Reviewed by | Approved by | Date approved | Reason for revision |
|----------|-------------------------------|---------------------------------------|---------------|---------------|---------------------|
| C01 | Charlotte Self Laura James | Alex Smith Emma West Jay Carver | Michael Court | 07.02.2025 | Fit for acceptance |

Security classification: OFFICIAL

Handling Instructions: None

HS2 Ltd - Code 1 - Accepted



Access+



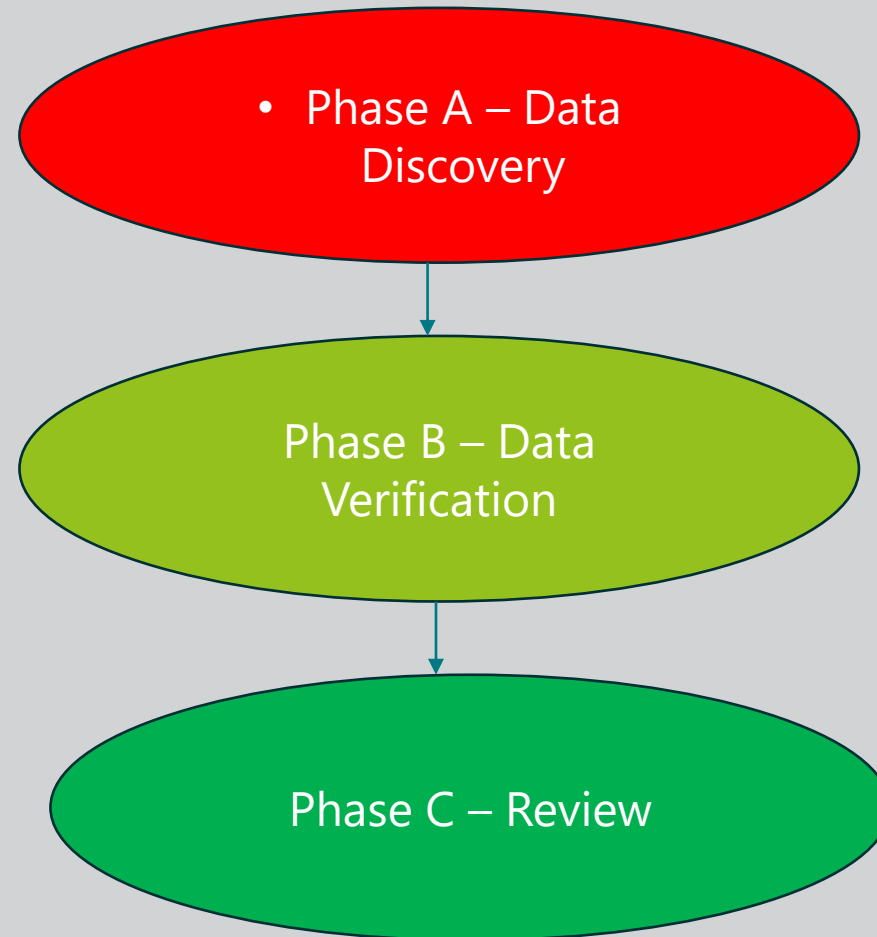
Work to date (October 24 – April 25)

Baseline Review

Purpose of Baseline Review

- 1) Establish exactly what was done and what was found across all HS2 Phase 1 works
 - 2) Collate and review all recommendations made for future (analysis) work, including how they feed into HERDS objectives
- The main aim:
 - having the information required to formulate overarching project plans and project designs for the analysis phase

How do we do this?

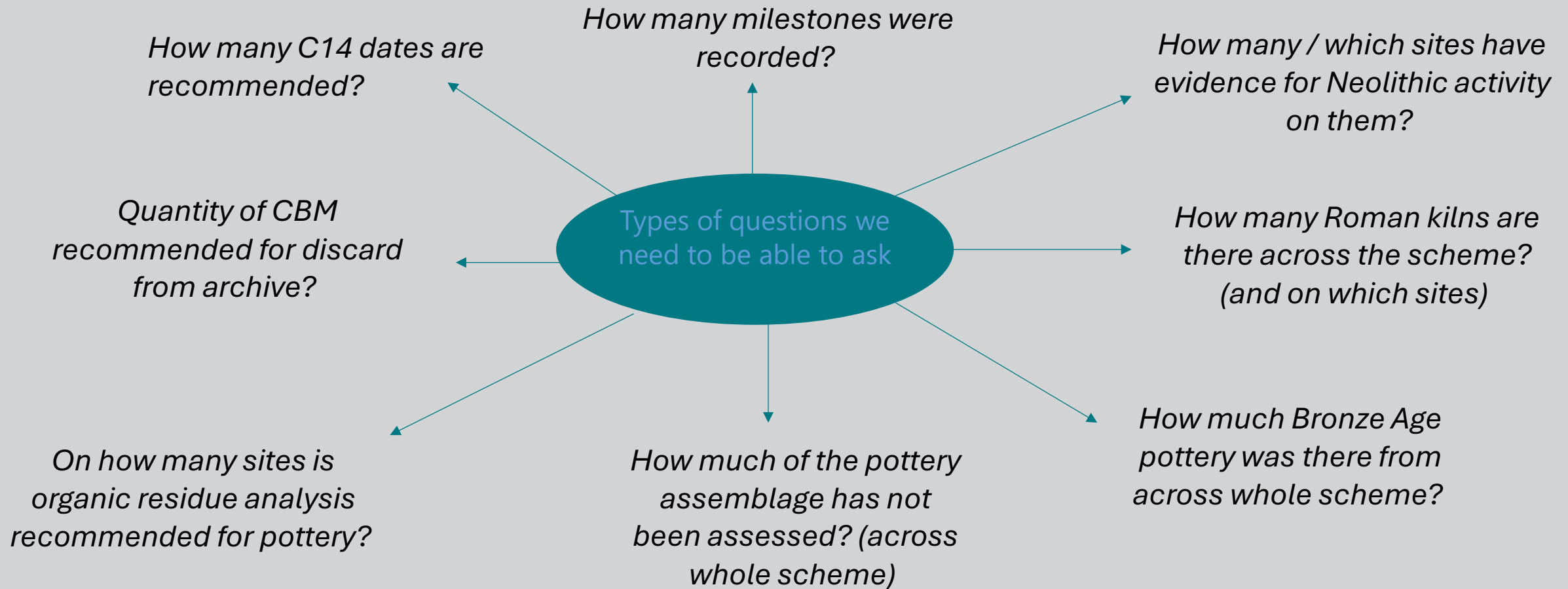


PHASE A – Data Discovery

OVERALL STATUS OF BASELINE REVIEW DISCOVERY

| Activity code | Total sites | No of sites 'complete' Discovery | % of sites 'complete' Discovery |
|---------------|-------------|----------------------------------|---------------------------------|
| TT | 141 | 49 | 34.75 |
| AM | 27 | 5 | 18.52 |
| AR | 74 | 43 | 58.11 |
| CI | 47 | 7 | 14.89 |
| EX | 5 | 1 | 20.00 |
| BS | 66 | 38 | 57.58 |
| HL | 21 | 11 | 52.38 |
| AP | 1 | 0 | 0.00 |
| BO | 6 | 4 | 66.67 |
| DA | 49 | 38 | 77.55 |
| DP | 2 | 0 | 0.00 |
| FW | 4 | 0 | 0.00 |
| GC | 1 | 0 | 0.00 |
| GT | 6 | 0 | 0.00 |
| LD | 1 | 0 | 0.00 |
| MD | 4 | 1 | 25.00 |
| MG | 77 | 33 | 42.86 |
| PR | 13 | 0 | 0.00 |
| TO | 1 | 1 | 100.00 |
| TP | 5 | 1 | 20.00 |
| HR | 2 | 0 | 0.00 |
| TOTAL | 553 | 232 | 41.95 |

PHASE B + C – Verification and Review



Modules

- Overview
- Map
- SharePoint Site
- Data Catalogue
- Baseline Data Discovery
 - Baseline Tool
 - Baseline Dashboard
 - Cataloging Survey Progress
- Project Management
- Project GPT
- ProjectGPT - Fieldwork

Actions

SITE CODE SELECTED FOR PHASE C REVIEW:

1C18NFCAR

Site Code 1C18NFCAR

Site Name North Of Field Cottage

- Site Specific Analysis
- Finds
- Environmental
- Osteology
- Dating

KEY FEATURES (2) NEW KEY FEATURES

What key features have been identified on this site?

| | | |
|--|-----------------------|--------------------|
| 1C18NFCAR | AR | Mid Roman |
| Site Specific Analysis Site Code | Activity Type | What period is it? |
| Roman - Field system | | |
| What key features are there of note? (by period) | | |
| laura.james@headlandarchaeology.com | Yesterday, 2:42:51 PM | n/a |
| Created By | Created Date | Updated By |
| 1C18NFCAR | AR | Medieval |
| Site Specific Analysis Site Code | Activity Type | What period is it? |
| Post-Medieval - Furrow | | |
| What key features are there of note? (by period) | | |
| laura.james@headlandarchaeology.com | Yesterday, 2:46:53 PM | n/a |
| Created By | Created Date | Updated By |

SITE SPECIFIC ANALYSIS REVIEW (1)

What specific analysis has taken place on the site?

| |
|---|
| Roman, Medieval, Post Medieval, Uncertain |
| What are the periods as defined in the HERDS GIS Deliverables? |
| Ditch, Ridge And Furrow, Tree Throw |
| What features are listed in the deliverables? |
| FieldworkThe archaeological remains from Trench 9 and Trench 11 indicate the presence of a Roman ditch and this suggests there may be more Roman activity on the Site. Roman pottery and coins were already reported to be found on the Site and this evaluation confirms evidence for Roman occupation. Furrows were also shown to be present on the Site which were orientated WNW-ESE and would have been part of a series of ridge and furrow features. These features may have been part of a medieval field system extending to the south-east. This large, open field may have been truncated in the mid-19th cen... |
| Description |
| Average (normal preservation, ie truncated remains of negative features with some finds etc!) |
| Comment of the overall quality of preservation. |
| n/a |
| Should ALL the recommendation be reviewed in relation to others? If yes, which site codes. |
| Features described in text with limited phasing. No |
| Comment on the level of detail at assessment |
| Is there a stratigraphic matrix / digital record of stratigraphic relationships? |
| n/a |
| What recommendations are there in the report? |



• Outputs of baseline review?

Full understanding of what has been done and what needs to be done in analysis

Information needed for project overviews and plans

Consistent and coherent set of information that can be referred to and cross-referenced easily

Work to date

(October 24 – April 25)

- HS2 Academic Panel
- Third party research/requests
- Conferences (CIFA, AEA)
- Scoping Data Management System (DMS) for Stage 2
- Outline structure of Project Design
- Building and consolidating the team

HS2 Key Milestones for remainder of Stage 1



- Research
- Data Management
- Community Engagement
- SEE & EDI
- Scientific dating & chronology
- Publication & dissemination
- Archiving, museums and landowner engagement
- Stakeholder Engagement
- Stratigraphic analysis
- Historic Buildings and places
- Osteology
- Environmental
- Finds

HS2 Key Milestones for remainder of Stage 1



- Principal Site Archives
- Key Site Publications
- Methodological assessments
- Period syntheses
- Cross-period themed plans
- Public engagement plans
- And others...

HS2

HS2 Update



Area North Update

Mercote

Trenching at Mercote to test a LiDAR feature

Mainline North

Scoping the impacts of programme changes to MLN, including at Dunton Barn

Old Curzon St Station

Engaging with the design team on emerging plans

Coleshill Relocation

Reconvening the working group

Auditing Built Heritage

Ongoing management commitments

Press Stories

OCSS was featured on 'Great Railway Journeys' on BBC

Area Central

Grims Ditch

Excavations complete

Re-profiling of preserved ends ongoing

Online 'Storymap' imminent

Hunts Green Farm- Preservation in situ underway



Area Central

Versions Farm

Series of Roman Burials (x11)-linear

Burnt Mound and palaeochannel

Hartwell House Wall

Wall recorded and taken down,
future reinstatement

Looking Forward

Wellwick Farm Wells CIR

Fleet Marston Putlowes Drive and
footpath re-alignments

Reporting programme ongoing



Area South Update

| | |
|---|--|
| Robert Stephenson statue | <u>Robert Stephenson statue goes on display at the Locomotion Museum, marking 200 years of the British passenger railway</u> |
| Camden | Camden Incline Winding Engine House; Park Village East; Euston Square railings |
| Cardington Street works (St James's Gardens) | Finalising project plans for the works following stakeholder feedback |
| Kensal Green Cemetery | Heritage Agreement Method Statement |
| West Ruislip | Trial trenching |

HS2

Schedule 20 update



Schedule 20

Ongoing enquiries relating to burial grounds / remains - predominantly the x3 major post-medieval ones.

Liaison with the representative of the Archbishops' Council – ledgers and Capt Flinders

Schedule 20 requirements as relate to Post-excavation work

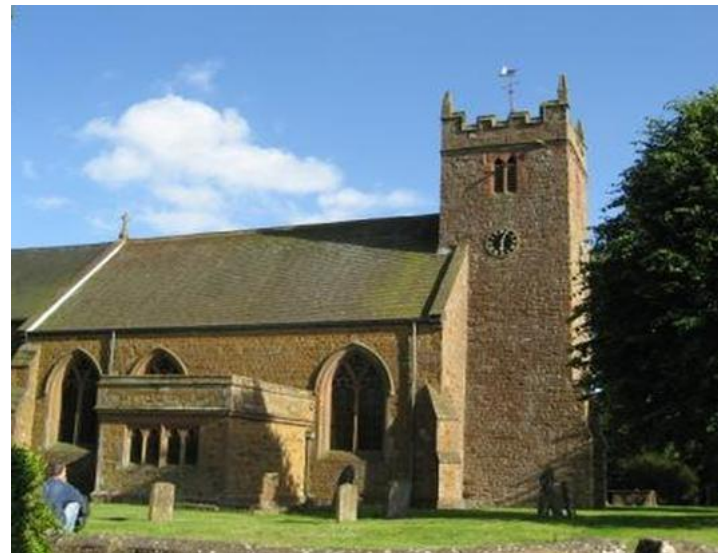
Reburial workstream



Ledger from St James Gardens



From a St James Gardens burial



Priors Hardwick – reburial plot reserved adjacent to the Church for Lower Radbourne medieval population



Brookwood Cemetery – existing memorial monument for reburial of St James's Gardens post-medieval population

HS2

Data Management update



HS2 Historic Environment GIS Data Transfer

- ❑ Phase 1 **Route wide** Historic Environment GIS data deposition with **ADS- Every 6 months** via an eB transmittal
- ❑ Phase 1 **Route wide** Historic Environment GIS data deposition with the **contractors** including (Post-ex contractor)- **Every 3 months** via an eB transmittal
- ❑ Bespoke/ad hoc/agile data transmittal to HS2's other departments/contractors/Historic England
- ❑ Phase 1 Historic Environment GIS data deposition with **HERs** within their **LA boundary plus 1km buffer - Every 6 months** via an eB transmittal

HS2 Historic Environment GIS Data Deposition with HERs

Areas of Interest (Aol)

- Phase 1 Historic Environment GIS data deposition with **HERs** for within their **LA boundary plus 1km buffer - Every 6 months** via an eB transmittal

The list of Local Authorities along the phase 1 route

| | |
|---|----------------------------|
| 1 | Greater London |
| 2 | Buckinghamshire |
| 3 | Hertfordshire |
| 4 | Oxfordshire |
| 5 | Northamptonshire |
| 6 | Warwickshire and Solihull* |
| 7 | Birmingham |
| 8 | Staffordshire |
| 9 | Coventry |

**Warwickshire HER oversees the HER in Solihull, therefore a single data package was created*

HS2 Historic Environment GIS Data Deposition with HERs

Data transmittal history

- Phase 1 Historic Environment GIS data deposition with **HERs** for within their **LA boundary plus 1km buffer - Every 6 months** via an eB transmittal

| Revision | Date |
|----------|---------------------|
| P01 | Sep 2020 |
| P02 | Mar 2021 |
| P03 | Oct 2021 |
| P04 | April 2022 |
| P05 | Oct 2022 |
| P06 | Dec 2023 |
| P07 | Nov 2024 |
| P08 | To be sent May 2025 |

HS2 Historic Environment GIS Schemas

HERDS GIS schema

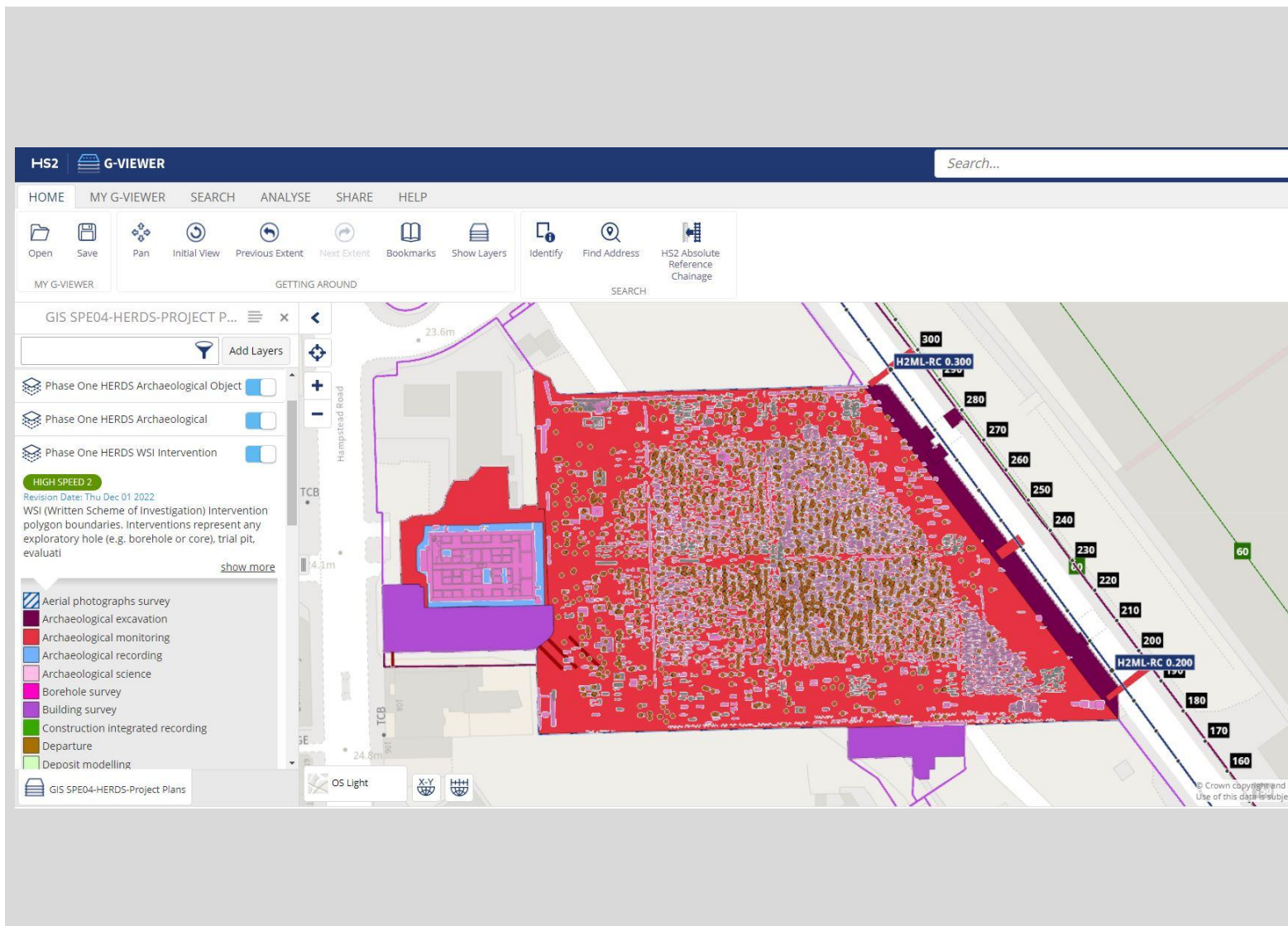
(HS2-HS2-GI-SPE-000-000004)

Vector data

- HIS_ORI_CXXXX_CH_HERDS_ArchaeologicalObject_Pt
- HIS_ORI_CXXXX_CH_HERDS_Feature_Ply
- HIS_ORI_CXXXX_CH_HERDS_ProjectPlan_Ply
- HIS_ORI_CXXXX_CH_HERDS_WSIntervention_Ply
- HIS_ORI_CXXXX_CH_HERDS_LSWSI_Ply

Tables

- HIS_ORI_CXXXX_CH_HERDS_Documents_Tbl
- HIS_ORI_CXXXX_CH_HERDS_DocumentsLink_Tbl
- HIS_ORI_CXXXX_CH_HERDS_ObjectivesLink_Tbl
- HIS_ORI_CXXXX_CH_HERDS_ObjectivesLookup_Tbl



HS2 Historic Environment GIS Schemas

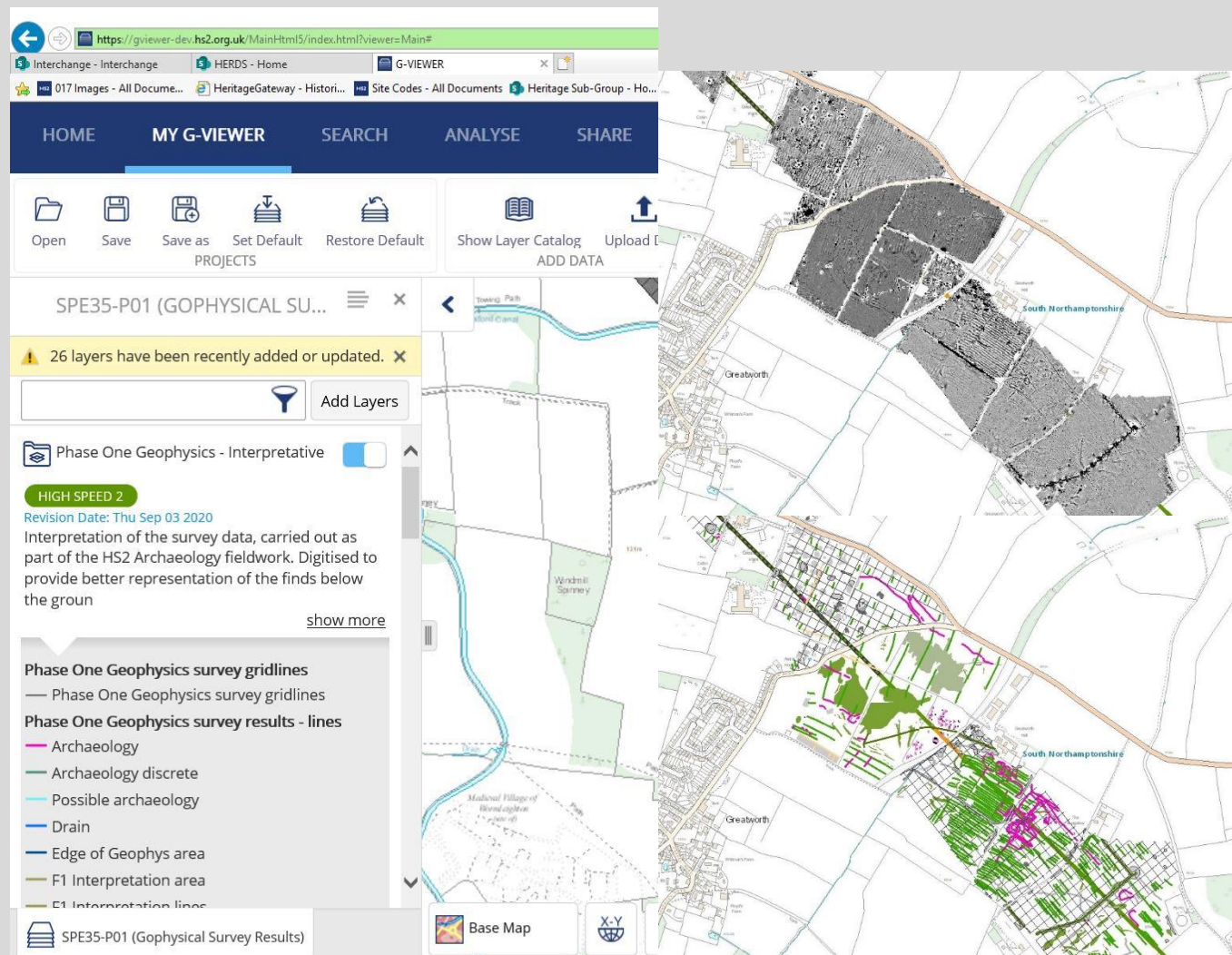
Geophysical Survey Results (HS2-HS2-GI-SPE-000-000035)

Raster Catalogs

- HIS_ORI_CXXXX_CH_GeophysSurveyResults
- HIS_ORI_CXXXX_CH_GeophysSurveyResultsMP
- HIS_ORI_CXXXX_CH_GPRSurveyResults
- HIS_ORI_CXXXX_CH_GPRSurveyResultsMP

Vector data

- HIS_ORI_CXXXX_CH_GeophysSurveyResults_Ply
- HIS_ORI_CXXXX_CH_GeophysSurveyResults_Ln
- HIS_ORI_CXXXX_CH_GeophysSurveyResults_Pt
- HIS_ORI_CXXXX_CH_SurveyGrid_Ln
- HIS_ORI_CXXXX_CH_SurveyGrid_Pt
- HIS_ORI_CXXXX_CH_SurveyArea_Ply

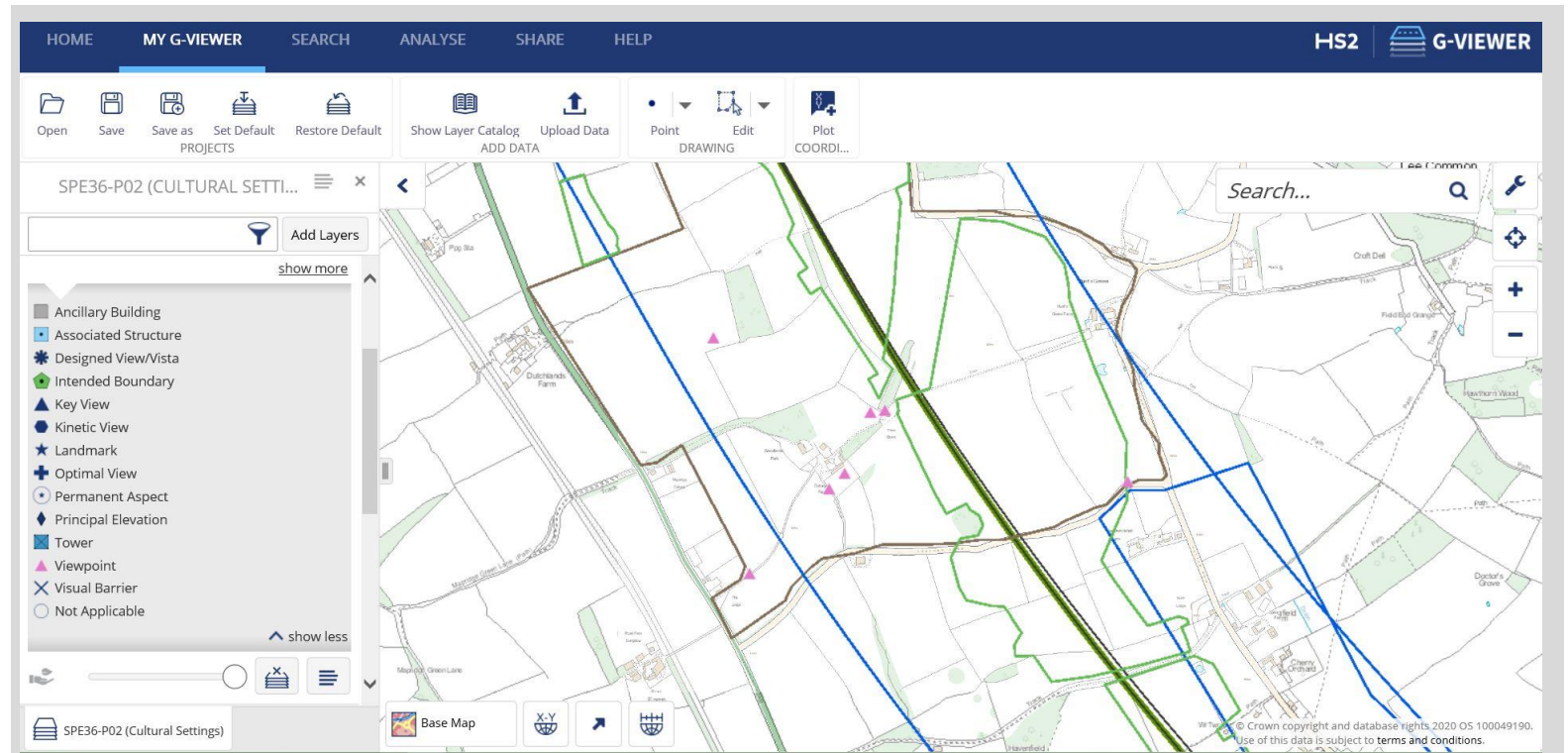


HS2 Historic Environment GIS Schemas

□ Cultural Heritage Settings (HS2-HS2-GI-SPE-000-000036)

Vector data

- HIS_ORI_CXXXX_CH_Settings_Ln
- HIS_ORI_CXXXX_CH_Settings_Ply
- HIS_ORI_CXXXX_CH_Settings_Pt



HS2

Historic Environment GIS Schemas

❑ Surface Collection (HS2-HS2-GI-SPE-000-000069)

Vector data

- HIS_ORI_CXXXX_CH_SurfaceCollectionSurveyResults_Pt
- HIS_ORI_CXXXX_CH_SurveyArea_Ply
- HIS_ORI_CXXXX_CH_SurveyGrid_Ln

❑ Remote Sensing (HS2-HS2-GI-SPE-000-000070)

Vector data

- HIS_ORI_CXXXX_CH_RemoteSensingSurveyResults_Ln
- HIS_ORI_CXXXX_CH_RemoteSensingSurveyResults_Ply
- HIS_ORI_CXXXX_CH_SurveyArea_Ply



Using a metal detector at Blackgrounds.
Photograph: Dan Burn-Forti/The Observer



<https://www.earthdatascience.org/courses/earth-analytics/multispectral-remote-sensing-data/introduction-multispectral-imagery-r/>

HS2 Historic Environment GIS Data with HERs

Data Format

- **Format of the GIS data sent to ADS and HERs:** Each data package includes three folders:
 - ✓ First, GIS data in **ESRI ArcGIS GDB format** (including vector data and tables in gdb format and raster data in Raster Catalog format);
 - ✓ Second, GIS data in **open format** (including Vector data in Shapefile format, tables in csv format, and raster data as TIFF format), just in case any HER might not be equipped with ESRI GIS products, and they might use other platforms of spatial data analysis such as QGIS or MapInfo, etc. ;
 - ✓ Third, **Guidance Documents**, including data licence (a Read Me text file), some documents and instruction about how different GIS layers are related together, and a bit of their domains and fields tables in html format;

HS2

Reset and Bridge Year



Reset and Bridge Year

The Challenge

- The cost of building HS2 has gone up significantly while construction has fallen behind.
- Work has dropped out of sequence along the 140-mile route.
- Intervention is necessary because the schedule can't be achieved under the existing railway scope and delivery strategy.

Causes

- The situation has been caused by a combination of factors, for example, commencement of main works construction too early in 2020 when the scheme's designs were still at an immature stage and cost estimates were too optimistic.
- External factors including inflation and government-directed scope changes, like the cancellation of Phase Two, have added to the drip-feed of cost rises and schedule disruption.



Reset and Bridge Year

A thorough review of the HS2 programme, our commercial relationship with suppliers and our company HS2 Ltd:

- Produce a new baseline for cost and schedule and put the programme into the correct in sequence for construction, rail systems and testing;
- Agree a new deal with our contractors to break the cycle of cost increases and delays;
- Make sure HS2 Ltd has the structure, skills and resources to manage the programme.

The reset will take place throughout 2025/26 - the Bridge Year - and deliver a new baseline in spring 2026.

Not all planned works can be delivered in FY 2025/26: some areas are being deferred prioritising design works



HS2

AOB

