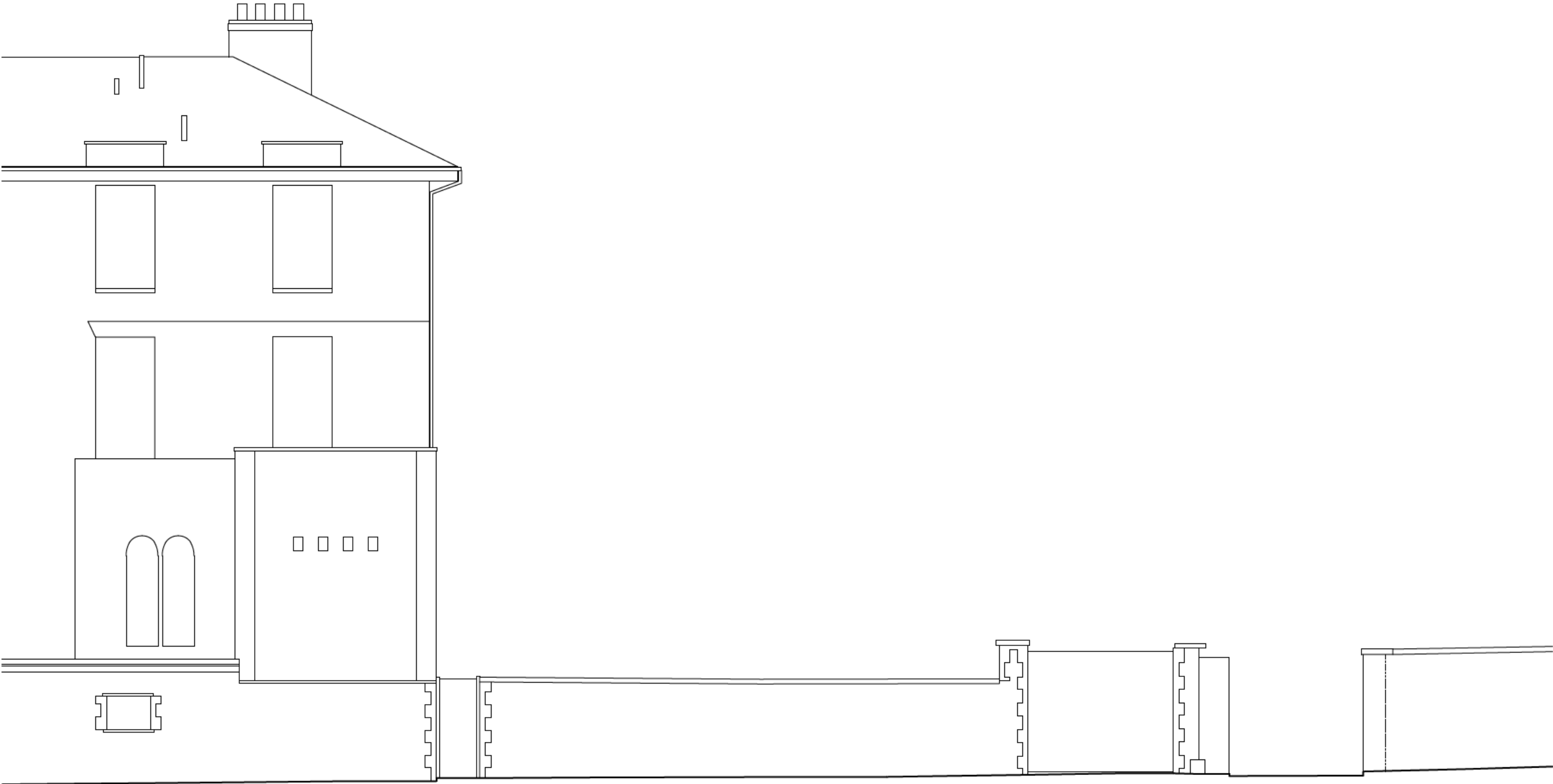


Responsibility is not accepted for errors made by others scaling from this drawing. All construction information should be taken from figured dimensions only.



REV	Note	Date
<div><div><div>105</div><div>105WESTARCHITECTS</div></div><div><div>105 WEST ARCHITECTS Ltd</div><div>107 Lower Redland Road, Redland,</div><div>Bristol. BS6 6SW</div><div>T: 0117 3737596</div><div>E: info@105west.co.uk</div><div>Web site: www.105west.co.uk</div></div></div>		
Project	Rear 6 Tyndalls Park Road	
Drawing Title	Existing West Elevation	
Drawing No.	1749(L)12	
Scale @A3	drawn by	Date
1:100	LH	26/03/24
		Rev
		/

