

Air Quality and Dust Monitoring Monthly Report – February 2025

Lichfield District Council



Department for Transport

High Speed Two (HS2) Limited has been tasked by the Department for Transport (DfT) with managing the delivery of a new national high speed rail network. It is a non-departmental public body wholly owned by the DfT.

High Speed Two (HS2) Limited,
Two Snowhill
Snow Hill Queensway
Birmingham B4 6GA

Telephone: 08081 434 434

General email enquiries: HS2enquiries@hs2.org.uk

Website: www.gov.uk/hs2

A report prepared by EWCs and MWCCs on behalf of HS2 Ltd.

High Speed Two (HS2) Limited has actively considered the needs of blind and partially sighted people in accessing this document. The text will be made available in full on the HS2 website. The text may be freely downloaded and translated by individuals or organisations for conversion into other accessible formats. If you have other needs in this regard please contact High Speed Two (HS2) Limited.

© High Speed Two (HS2) Limited, 2025, except where otherwise stated.

Copyright in the typographical arrangement rests with High Speed Two (HS2) Limited.

This information is licensed under the Open Government Licence v2.0. To view this licence, visit www.nationalarchives.gov.uk/doc/open-government-licence/version/2 **OG** or write to the Information Policy Team, The National Archives, Kew, London TW9 4DU, or e-mail: psi@nationalarchives.gsi.gov.uk. Where we have identified any third-party copyright information you will need to obtain permission from the copyright holders concerned.



Monthly Summary

- 1.1.1 This Summary Report is published in fulfilment of commitments detailed in the High Speed Rail (London-West Midlands) Environmental Minimum Requirements, Annex 1: Code of Construction Practice, for the nominated undertaker to present the results of air quality and dust monitoring undertaken in Lichfield District Council (LDC) during February 2025.
- 1.1.2 Figures 1 and Figure 2 in Appendix A presents the current worksites together with the dust monitoring locations.
- 1.1.3 This summary should be read in conjunction with the overview monitoring report monthly available from www.gov.uk/government/collections/monitoring-the-environmental-effects-of-hs2, which highlights: the applicable standards and guidance, as well as the air quality and dust monitoring methodologies to be implemented by nominated undertakers throughout construction.
- 1.1.4 The current worksites, as presented in Appendix A, Figures 1 and 2, include:

Sublot 8.1

Whittington Common Cutting

- Darnford Lane Overbridge construction.
- Expanded working in neighbouring Darnford Lane cutting until the end of May 2025.

Swinfen Cutting South

- Construction of Bentonite Slab.

Sublot 8.2

Streethay Area 3/4/5/6 works

- Piling works including excavation with piling rig, installation and removal of casings, use of crane for different lifting activities, concrete deliveries, cages deliveries, and other removals with arisings with excavators and lorries.
- Platform maintenance.
- Sheet Piling UK (SPUK) mobilisation.
- Pre-augering works (with Continuous Flight Auger (CFA) rig, crane in use, arisings cleaning with excavators and dumpers).
- Footbridge foundation construction and towers installation.
- Crane rig and equipment deliveries and lorries (some under police escort and with the A38 road blocked).
- Excavation with excavator.
- Groundbreaking (concrete and tarmac) with breaker.

- Ground movements with Articulated Dump Trucks (ADTs) and tippers.
- Deliveries with lorries and Hiab (lorry mounted crane).
- Concrete deliveries and concrete installation with excavators.
- Towers installation with crane, deliveries with lorries, and works with Mobile Elevating Work Platform (MEWP).

Streethay Area 1 works

- Deliveries and collections.
- Road sweepers.
- Maintenance.
- Strimming.
- Plant used: Small items of plants including plate compacters, excavators, dumpers and a strimming machine.

Sublot 8.3

Streethay Area 3/4/5/6 works

- Piling works including excavation with piling rig, installation and removal of casings, use of crane for different lifting activities, concrete deliveries, cages deliveries, and other removals with arisings with excavators and lorries.
- Platform maintenance.
- Sheet Piling UK (SPUK) mobilisation.
- Pre-augering works (with Continuous Flight Auger (CFA) rig, crane in use, arisings cleaning with excavators and dumpers).
- Footbridge foundation construction and towers installation.
- Crane rig and equipment deliveries and lorries (some under police escort and with the A38 road blocked).
- Excavation with excavator.
- Groundbreaking (concrete and tarmac) with breaker.
- Ground movements with Articulated Dump Trucks (ADTs) and tippers.
- Deliveries with lorries and Hiab (lorry mounted crane).
- Concrete deliveries and concrete installation with excavators.
- Towers installation with crane, deliveries with lorries, and works with Mobile Elevating Work Platform (MEWP).

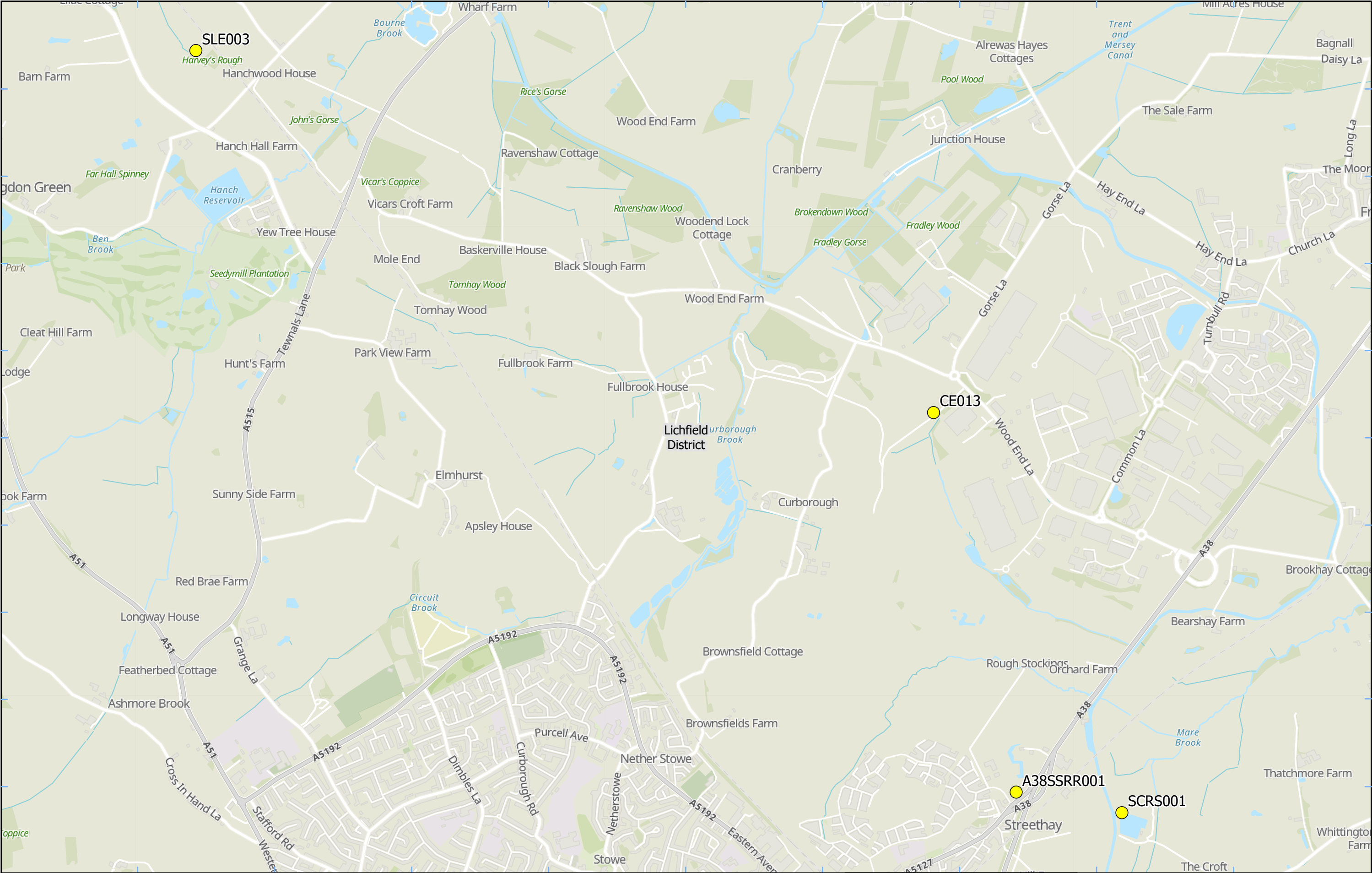
Streethay Area 1 works

- Deliveries and collections.
- Road sweepers.
- Maintenance.
- Strimming.
- Plant used: Small items of plants including plate compacters, excavators, dumpers and a strimming machine.

- 1.1.5 Seven (7) dust monitors are installed around these worksites, where works are underway. These sites returned a low to medium dust risk rating.
- 1.1.6 Dust monitoring locations and results are presented in Appendix B, Table 1, together with line charts of monthly data from the dust monitors presented in Figure 3. All continuous dust monitoring is undertaken using indicative monitors. Despite being Environment Agency (MCERTS) certified, indicative monitors carry a higher level of uncertainty than reference monitors, and therefore cannot be strictly compared with Air Quality Standards for human health and the environment. The purpose of the monitoring undertaken is to ensure the effectiveness of the on-site mitigation.
- 1.1.7 The trigger level for PM₁₀ concentrations of 190 µg/m³, over a 1-hour period, in accordance with the updated guidance document '*Guidance on Monitoring in the Vicinity of Demolition and Construction Sites – (October 2018)*' has been applied.
- 1.1.8 No (0) dust trigger alerts were recorded during the monitoring period (February 2025).
- 1.1.9 Data capture was below 90% for multiple monitors due to:
- Monitor CE013 – A battery refresh and field calibration were done on 14th February 2025. After this site visit, the power supply issues were resolved.
 - Monitor WCC001 – A battery refresh is scheduled for 11th March 2025.
 - Monitor SCRS001 – A field calibration and full dust work up were done on 14th February 2025. After this site visit, the monitor issues were resolved.
 - Monitor SLE003 – A field calibration and battery refresh were done on 12th February 2025. A field calibration is scheduled for 6th March 2025.
 - Monitor WCC002 – A field calibration was done on 10th February 2025. After this site visit, the monitor issues were resolved.
 - Monitor SCS001 – A field calibration was done on 10th February 2025, and a battery refresh was done on 25th February 2025. After these site visits, the monitor issues were resolved.
- 1.1.10 There were no (0) complaints received during the reporting period (February 2025).

Appendix A – Worksites and Monitoring Locations

Figures 1-2: Worksites and Monitoring Locations within LDC



Legend

- Dust Monitor
- District Borough Unitary Boundaries

Service Layer Credits: GB Topographic: Contains OS data © Crown Copyright and database right 2023
Contains data from OS Zoomstack

Map Number

Map Name

**Monitoring Locations
In LDC (Sheet 1)**

Lichfield District Council



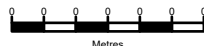
Registered in England. Registration number 06791686.
Registered office: 2 Snowhill, Queensway,
Birmingham B4 6GA.

© Crown copyright and database rights 2025.
Ordnance Survey Licence Number 100049190.

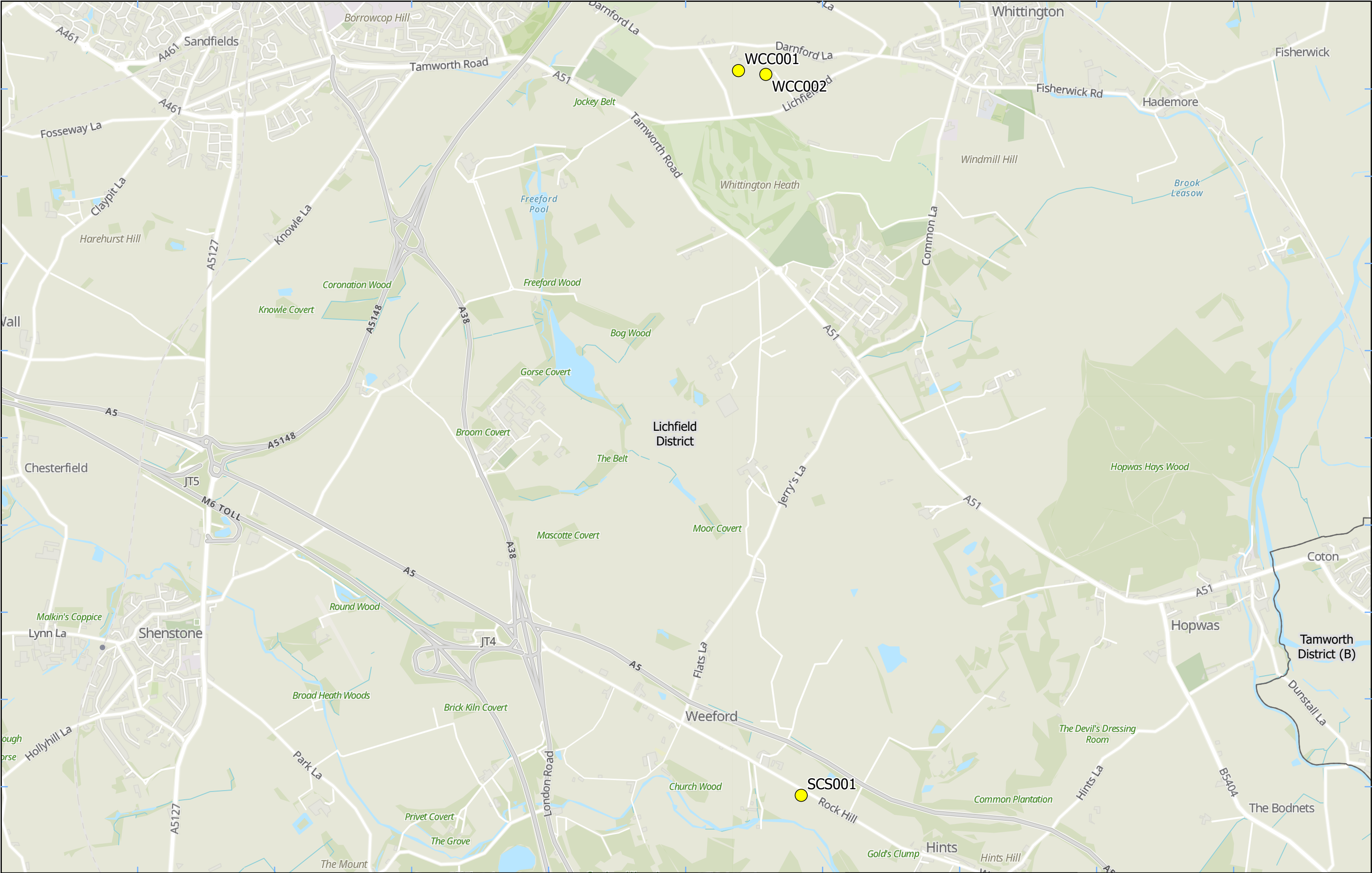
Doc Number:



Scale at A3: 1:18,000



Date: 19/12/24



Legend

Dust Monitor

District Borough Unitary Boundaries

Service Layer Credits: GB Topographic: Contains OS data © Crown Copyright and database right 2023
Contains data from OS Zoomstack

Map Number

Map Name

**Monitoring Locations
In LDC (Sheet 2)**

Lichfield District Council

Registered in England. Registration number 06791686.
Registered office: 2 Snowhill, Queensway,
Birmingham B4 6GA.

© Crown copyright and database rights 2025.
Ordnance Survey Licence Number 100049190.

Doc Number:

Scale at A3: 1:22,000

Metres

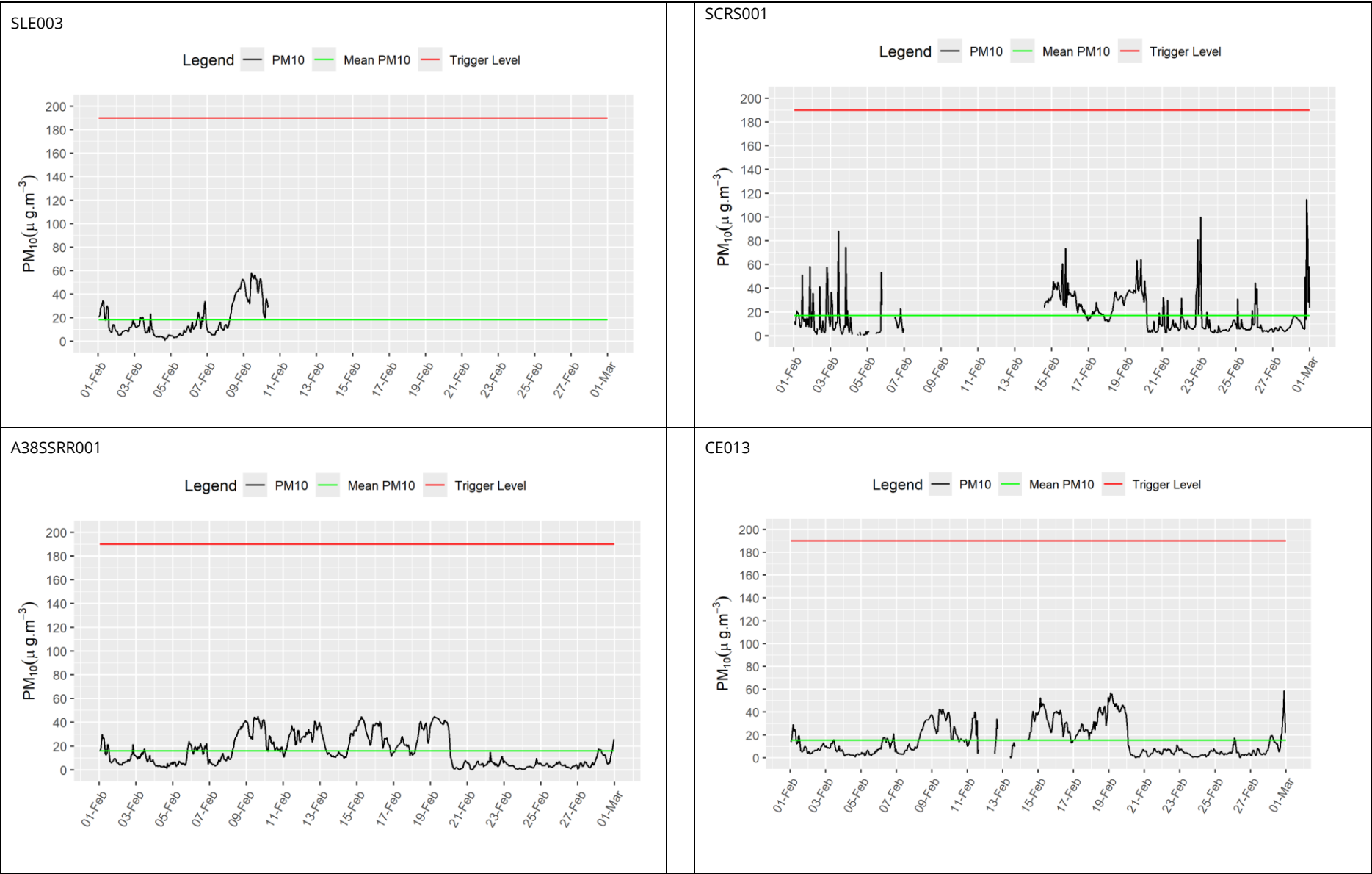
Date: 19/12/24

Appendix B – Dust Monitoring Results

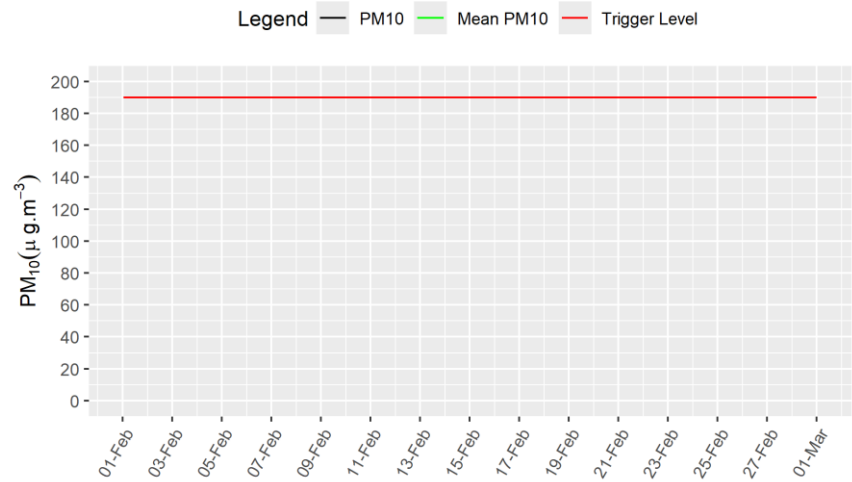
Table 1: Dust Monitoring Locations and Results

Monitoring site ID	Coordinates (X,Y)	Location description	Dust risk rating for site	Monitoring site active during period	Change to site since previous period report	Mean 1-hour PM ₁₀ concentration (µg/m ³)	Minimum 1-hour PM ₁₀ concentration (µg/m ³)	Maximum 1-hour PM ₁₀ concentration (µg/m ³)	Number of 1- hour periods exceeding trigger level of 190 µg/m ³	Data capture for Month (%)
SLE003	410077, 314464	New Farm Produce South, Shaw Lane Embankment	L	Yes	No	18.2	0.8	57.7	0	33.3
SCRS001	414895, 310500	Streethay Cutting Retaining Structure, King's Orchard Marina	M	Yes	No	17.1	0.6	114.7	0	68.3
A38SSRR001	414345, 310607	Thompson Way, Streethay, Fradley and Streethay	L	Yes	No	16.0	0.2	44.9	0	100.0
CE013	413915, 312581	Midlands Karting, Wood End Lane	L	Yes	No	15.4	0.1	58.5	0	92.6
WCC001	414682, 308298	Whittington Hill Farm, Darnford Lane	M	Yes	No	-	-	-	0	-
WCC002	414856, 308274	Ellfield House, Darnford House	M	Yes	No	11.6	0.1	45.0	0	73.5
SCS001	415081, 303691	The Lodge, Rock Hill	M	Yes	No	14.8	0.1	46.6	0	93.6

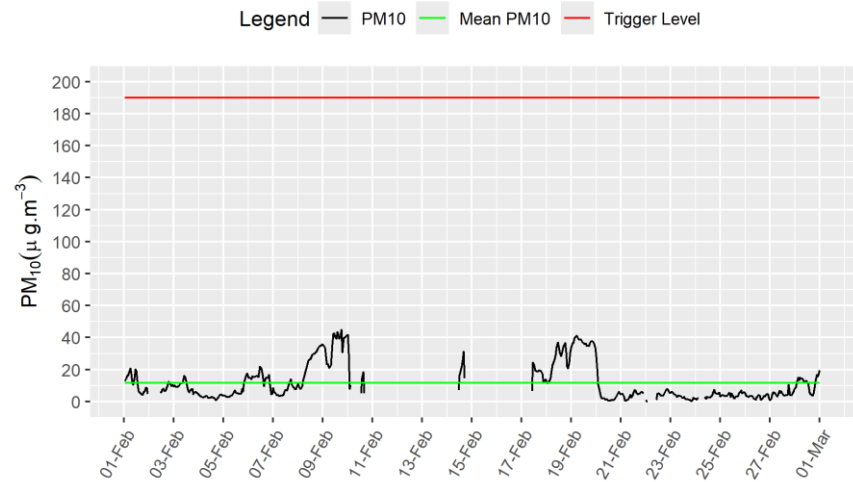
Figure 3: Construction dust 1-hour mean indicative PM₁₀ concentration for all dust monitors



WCC001



WCC002



SCS001

