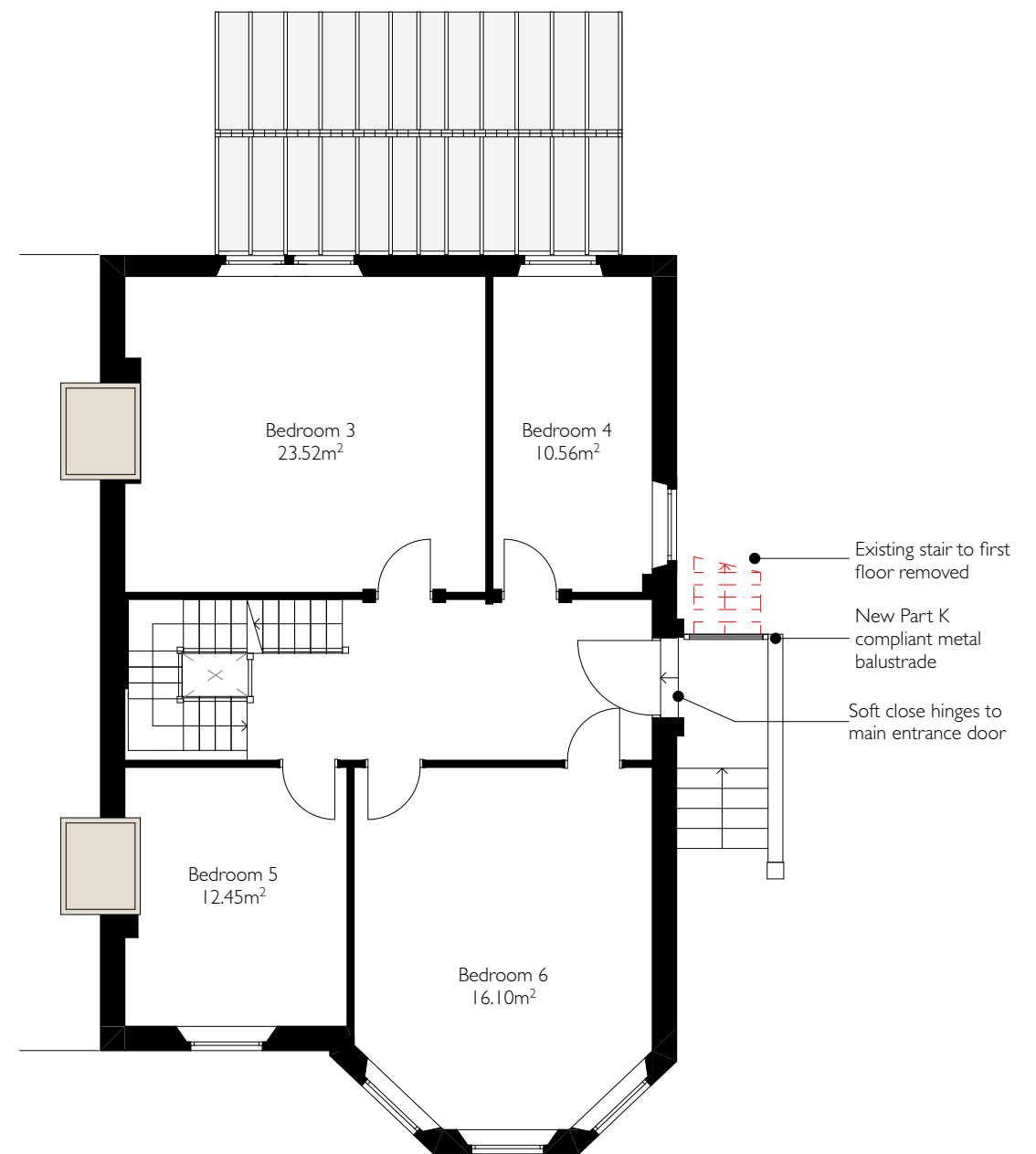


Proposed Lower Ground Floor Plan



Proposed Ground Floor Plan

87A Redland Road, Bristol, BS6 6RD

PL07 Rev /
Proposed Lower Ground and Ground Floor Plans

Scale 1:100 @ A3

NICHOLAS MORLEY ARCHITECTS LTD
Suite 10 Corum 2 Corum Office Park Crown Way Warmley Bristol BS30 8FJ
Email: njm@njmarchitecture.co.uk www:nicholasmorleyarchitects.co.uk

