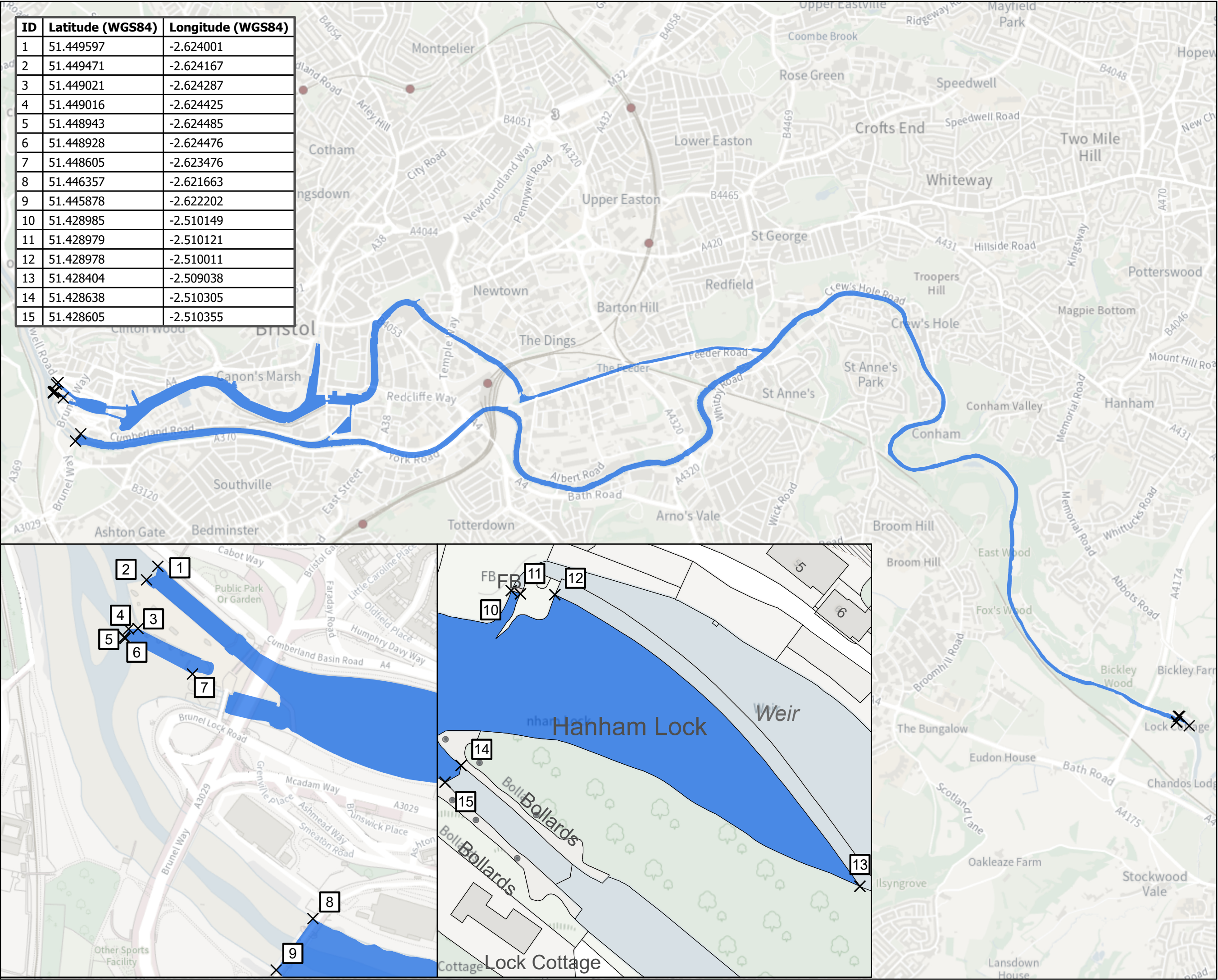


ID	Latitude (WGS84)	Longitude (WGS84)
1	51.449597	-2.624001
2	51.449471	-2.624167
3	51.449021	-2.624287
4	51.449016	-2.624425
5	51.448943	-2.624485
6	51.448928	-2.624476
7	51.448605	-2.623476
8	51.446357	-2.621663
9	51.445878	-2.622202
10	51.428985	-2.510149
11	51.428979	-2.510121
12	51.428978	-2.510011
13	51.428404	-2.509038
14	51.428638	-2.510305
15	51.428605	-2.510355



Bristol City Council

Bristol City Docks Harbour Limits

Legend

- Harbour Limits
- Bristol City Docks Harbour Limits

The provision of information by Bristol City Council does not imply a right to reproduce or commercially exploit such information without the Council's express prior written permission. Reproduction or commercial exploitation of information provided by the Council without its express permission may be an infringement of copyright.

The council is unable to grant permission to reproduce or re-use any material that is the property of third parties. Permission to reproduce or re-use such material must be obtained from the copyright holders.

N
© Crown Copyright and database right 2025.
Ordnance Survey AC0000807971.

BRISTOL CITY DOCKS

Scale : 1:24,000 @A3
Date: 24/03/2025



GROWTH & REGENERATION
DIRECTORATE
MANAGEMENT OF PLACE SERVICE
Harbour Office - Underfall Yard
Cumberland Road Bristol BS1 6XG
Tel: 0117 9031484 Fax: 0117 9031487
Email: harbour.office@bristol.gov.uk
Web: www.bristol.gov.uk/bristolharbour