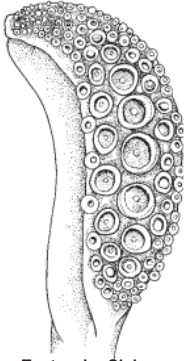



Common cuttlefish – *Sepia officinalis*

Catch App Species Code - CTC

Identifying features			
Tentacular Club	5-6 rows of suckers that vary in size 5-6 median suckers twice diameter of rest	 Tentacular Club	
Body	Broadly Oval Up to 490 mm mantle		
Colour	Variable: blackish-brown Striped or mottled		
Quota / Non Quota	Non Quota		

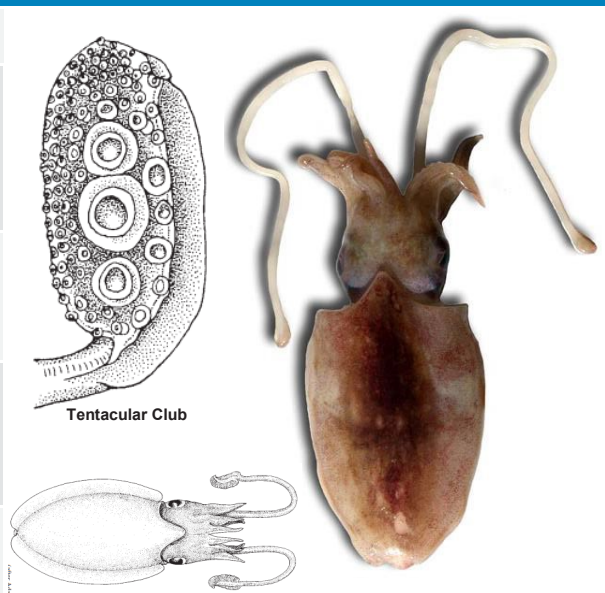
...ambitious for our seas and coasts

Sources: FAO (2005), Photo: © Alberto. M. Arias (right)

Elegant cuttlefish – *Sepia elegans*

Catch App Species Code - EJE

Identifying features	
Tentacular Club	Short and Oval 6-8 rows of suckers 3-4 greatly enlarged suckers in the middle
Body	Elongate-oval Up to ~75 mm mantle length
Colour	Red-brown More yellowish than common cuttlefish
Quota / Non Quota	Non Quota

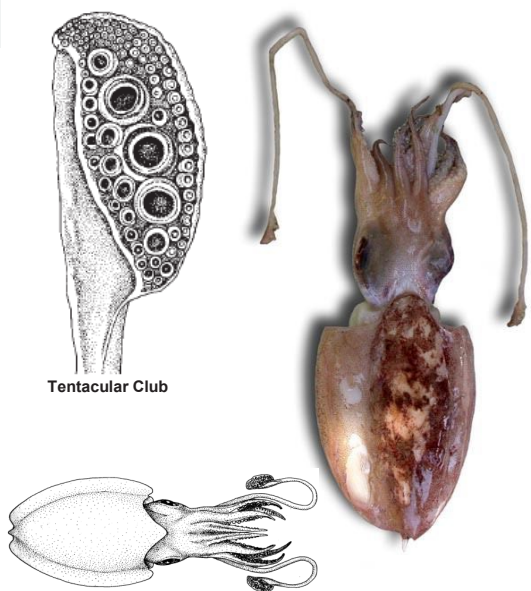


...ambitious for our seas and coasts

Sources: FAO (2005), Photo: © Alberto. M. Arias (right)

Pink cuttlefish – *Sepia orbignyana*

Catch App Species Code - IAR

Identifying features			
Tentacular Club	Short and oval 5-6 rows of suckers 3 large suckers in the middle with one slightly smaller sucker on each side of them	 <p>Tentacular Club</p>	
Body	Elongate-oval Up to ~120 mm mantle length, spine on rear of body		
Colour	Red-orange More reddish than common cuttlefish		
Quota / Non Quota	Non Quota		

...ambitious for our seas and coasts

Sources: FAO (2005), Photo: © Alberto. M. Arias (right)