



Animal &
Plant Health
Agency

Foot and mouth disease

Know the signs

In pigs

Lameness is the main sign of the disease. Blisters that progress to erosive sores are common especially on the feet.

Signs of foot and mouth disease in pigs include:

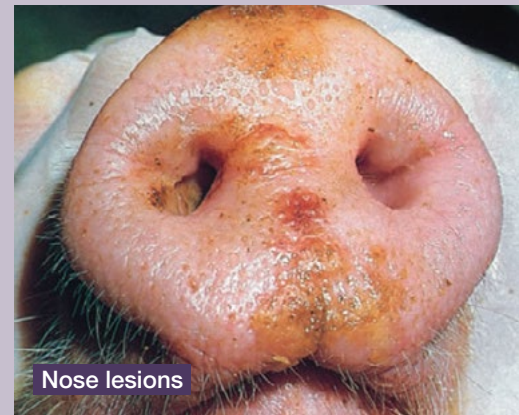
- sudden lameness, which may spread quickly among the herd
- loud squealing from pain
- tendency to lie down and unwillingness to move
- blisters on the feet – between the toes and at the junction of the hoof horn and the skin
- may get severe foot lesions including detachment of the claw horn
- lame pigs often adopt a ‘dog-sitting’ posture
- reluctance to feed
- fever
- depression
- sudden death in young pigs up to 14 weeks of age
- sometimes pigs may develop blisters on the snout and/or tongue

Swine vesicular disease and Seneca Valley virus can be confused with foot and mouth disease. If you see any of these signs you must report them.

Report it

If you suspect foot and mouth disease in your animals, you must report it immediately by calling:

- 03000 200 301 in England
- 0300 303 8268 in Wales
- your local Field Services Office in Scotland



Nose lesions



Tongue lesions



Hoof lesions



Find out more information
and how to report foot and
mouth disease by visiting:

[www.gov.uk/guidance/
foot-and-mouth-disease](http://www.gov.uk/guidance/foot-and-mouth-disease)

Foot and mouth disease is a notifiable animal disease. If you don't report it, you're breaking the law.