

Scheme Title : Maple Lodge STW Digester Domes  
 Contract Title : Replacement Gas Belts 5 - 8  
 Project Ref : 5353  
 Contract Ref : A1  
 DWG No 5353/A1/6056/EX

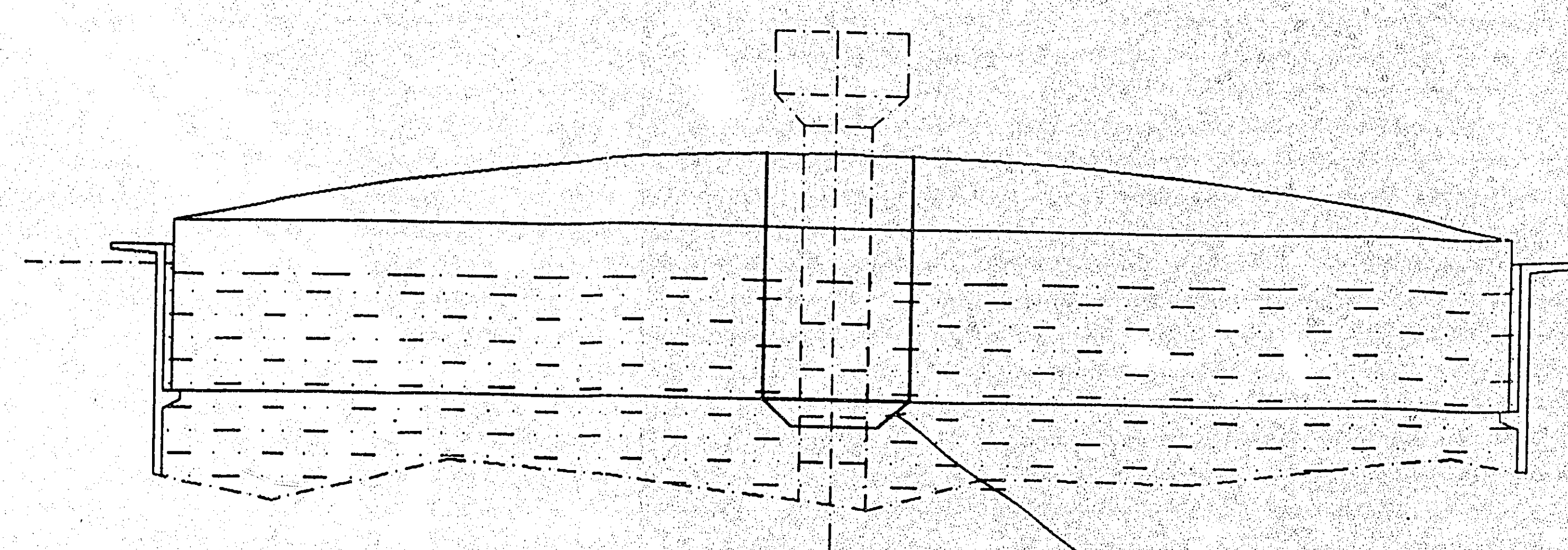
As built  
 J.L. Harrison 30/7/01

RECEIVED  
 9 OCT 1997

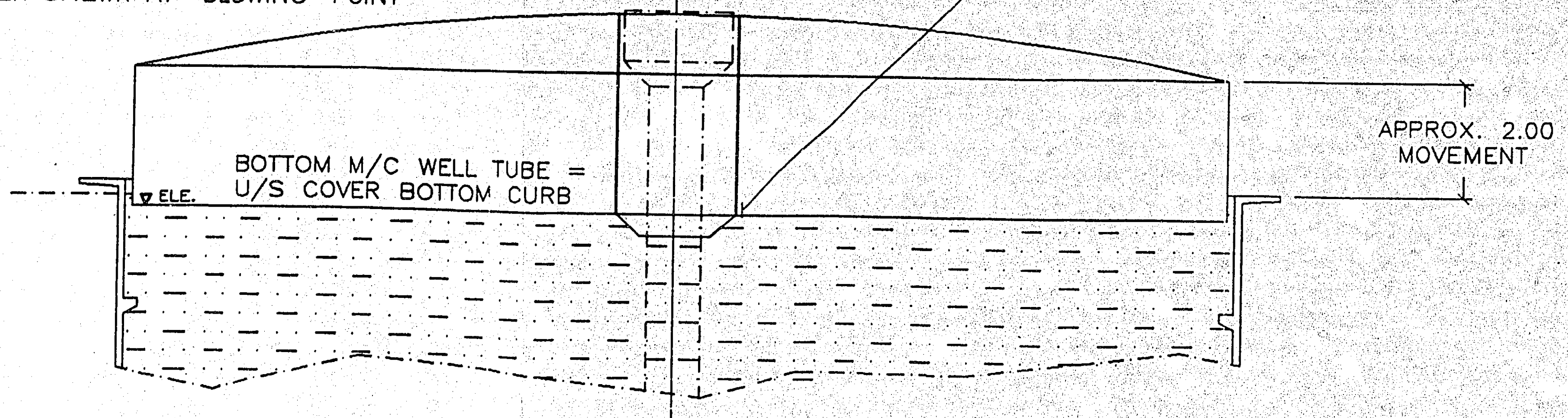
CLIENT:	J.T. SCOTNEY LIMITED	T.T.S. DRG	S97/076	32/14	REV	0
SITE:	THAMES WATER - MAPLE LODGE					
EQUIPMENT:	FOUR FLOATING DIGESTER COVERS					
ASSIGNMENT:	165	DWG NO.	JTSL01/014			
RAISED BY:	SID TEMPEST	DATE:	21.09.97	AUTHORISED:		
REVISIONS:	A.	B.	C.	D.	E.	F.
DATES:	Machinery Well Tube Seal Digester No 5					

**ITSA**  
 TEMPEST - STANSFIELD ASSOCIATES LTD.  
 CONSULTING ENGINEERS  
 PO BOX M14 LEEDS LS17 8UP  
 Telephone & Facsimile (UK) 0113 293 9507  
 e-mail sid@scobhp.com

COVER SHEWN AT GROUNDED ON CORBELS



COVER SHEWN AT 'BLOWING' POINT



45 DEGREE TRUNCATED PLATE CONE IN 6 THK.x 677 DEVELOPED RAKE LENGTH. FLANGED PLATE CONSTRUCTION AS J.T. SCOTNEY LTD DRAWING S97/076/SK1. CONE PROVIDED WITH A 75x6 BASE FLANGE TO MATCH THAT ON LOWER END OF WELL SEALING TUBE SHEWN ON DRG.NO.JTSL01/009 AND DRILLED WITH 36-18DIA.HOLES ON A 2.410 PCD. FLANGE ON TUBE DRILLED ON SITE USING CONE AS TEMPLATE. CONE IN THREE FLANGED & BOLTED SECTORS EACH JOINTED WITH 4-M16 BOLTS IN 18 DIA.HOLES.

ALL TO BE MADE FROM WELDABLE QUALITY CARBON STEEL CUT TO SHAPE USING SHEAR, MACHINE FLAME PLANE, LASER OR PLASMA. SEE JOB SPECIFICATION FOR SURFACE TREATMENT, INSPECTION & PAINTING. ALL ITEMS TO BE FETTLED & FULLY DE-BURRED BEFORE APPLICATION OF TREATMENT TO A STANDARD TO BE AGREED WITH THE PAINTER.

BRIEF DESCRIPTION:

FLOATING COVER MACHINERY WELL LUTE SEAL

DRAWING NUMBER:

JTSL01/014

S97/076/214 (0)  
 00443014.00  
 0000363