



What are **Connected Places**?

A **connected place** is a community where a system of applications collect data, with the aim of improving how the place operates and improving the quality of life for people. This can benefit all aspects of a community such as transport, buildings, utilities, the environment, infrastructure and public services. The most well-known connected places are 'smart cities'.

CRITICAL INFRASTRUCTURE & UTILITIES

This may include technologies such as **crowd monitoring**, to provide people with information on busy and quiet periods in town centres...

or the use of **smart local energy systems** to reduce pressure on the grid.



BUILT ENVIRONMENT EFFICIENCY & SAFETY

The built environment may include such technologies as systems to **monitor energy efficient street lighting**...

also **waste level sensors** within public bins to better inform pickup schedules...

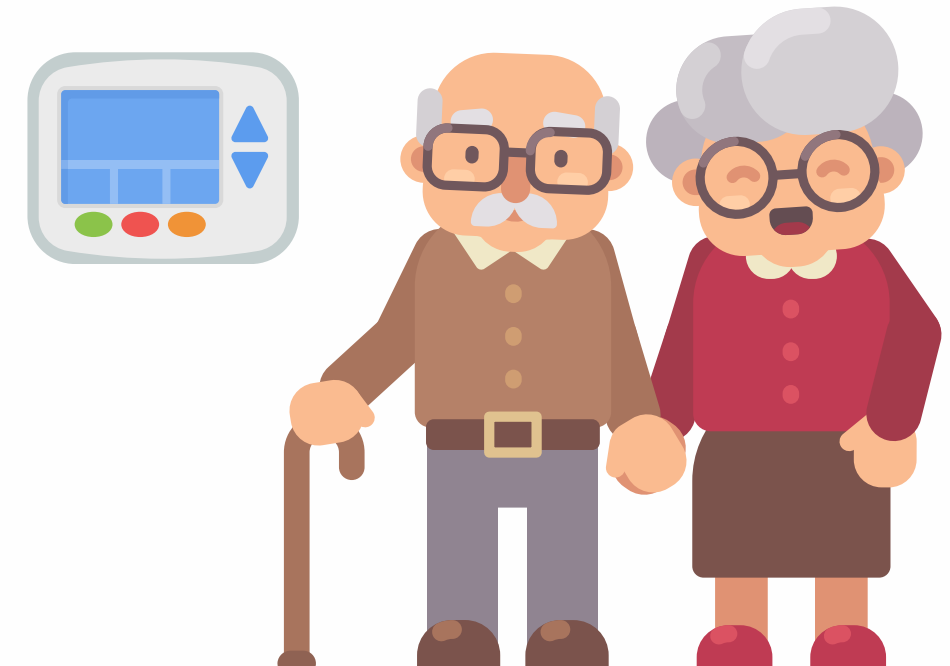
and potentially **facial recognition cameras** that help to identify criminals and find missing persons.



SOCIAL CARE, HEALTH & WELLBEING

To encourage safer living conditions for the more vulnerable, **temperature and moisture sensors** could be installed in housing, so that local authorities and care home managers can monitor and improve living conditions...

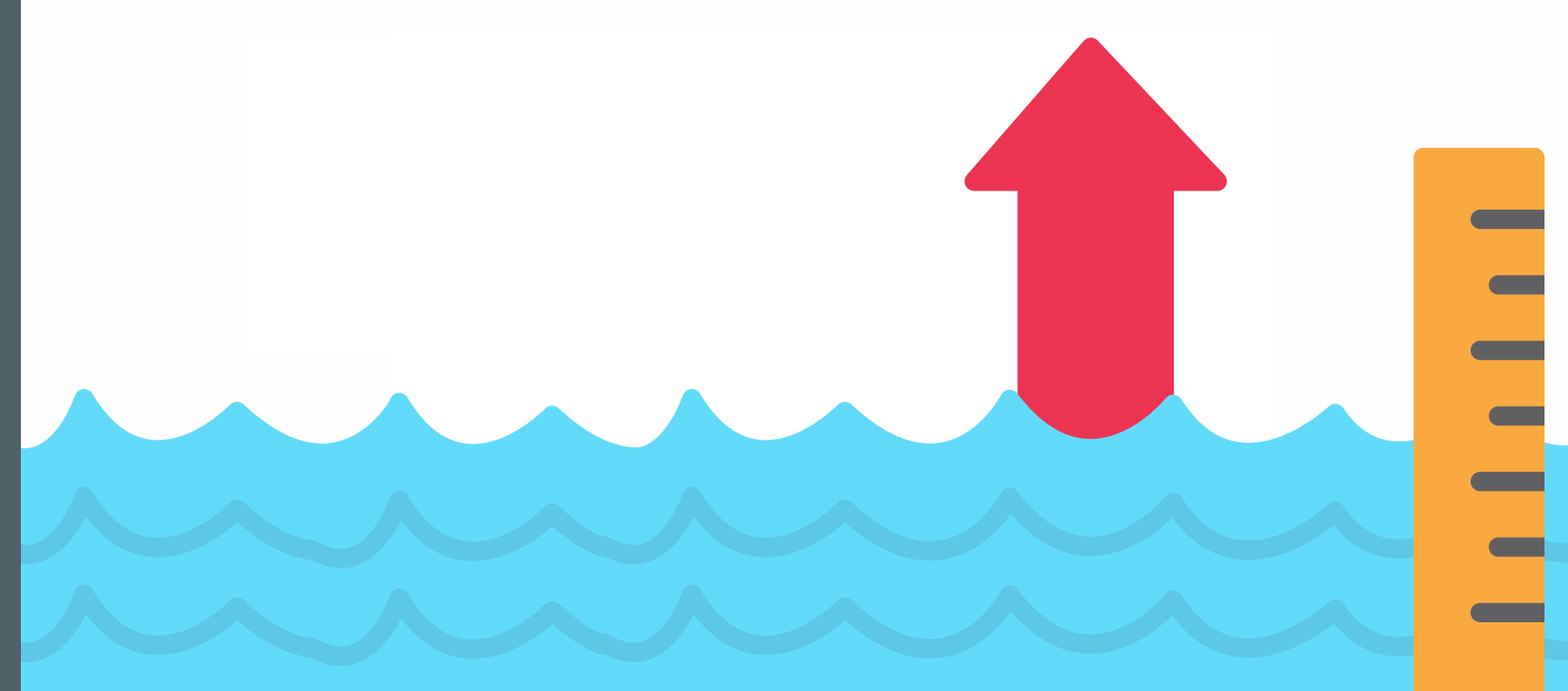
and similar sensors can be used to help protect those in assisted living situations, as they may be able to **detect accidents** and improve emergency response times.



ENVIRONMENTAL MONITORING

To monitor potentially high risk environment areas, **water level sensors** may be implemented to relay important information about flood risks...

also **air quality monitoring** could be undertaken to provide people with clean air walking routes around their local area.



TRANSPORT & NEW MOBILITY SOLUTIONS

To improve transport and commuting, the installation of **smart traffic light systems** could ease congestion on busy roads, while **car park monitoring** can indicate the number of free spaces...

also, futuristic **air transport solutions** could be implemented, such as **drones**, to make home deliveries or transport medical supplies to those who may have mobility issues.



Common questions about **Connected Places** technologies...

What about my data?

PERSONAL DATA COLLECTION

The types of data collected by different connected places technologies varies, however managers of connected places must **protect your legal right to privacy**, and follow the law on what data they hold about you.



UK General Data Protection Regulation (GDPR) sets out what organisations must do to manage and use personal data (i.e., information that can identify a living person) in a responsible way.

For more info about your data protection and information rights, visit:
www.gov.uk/data-protection or www.ico.org.uk/for-the-public/

Organisations managing connected places need to have **clear privacy statements**, clarify the **data they hold** and its purpose, and ensure only **trained individuals** handle personal data.



What about cyber security?

GOVERNMENT RECOMMENDATIONS

The government has set out **clear responsibilities** for managers and suppliers of connected places technologies, including local authorities. They have put in place **cyber security guidance** designed to cover aspects such as:

- **Understanding potential risks** of a connected place
- Having in place good **cyber security governance** and skills
- **Being careful** when working with technology suppliers
- Understanding legal and **regulatory requirements**
- Ensuring technologies are **not exposed to easy attack**
- **Monitoring** for any data leaks or attacks in order to **act quickly**

The National Cyber Security Centre (**NCSC**) and Department for Science, Innovation and Technology (**DSIT**) provide specific cyber security guidance to managers of connected places with the following resources:

NCSC's Connected Places Cyber Security Principles



DSIT's Secure Connected Places Playbook

What about...

WHO IS MANAGING THE TECHNOLOGY?

Your local authority and some affiliated organisations will likely be in control of the technology implemented in your area.

These technologies are designed with safeguards in mind to be secure long-term and minimise cyber attack risks, failures or admin errors.



FINDING OUT WHAT'S HAPPENING?

Local authorities are recommended to make any information about connected places technologies - such as what has, and will, be implemented - publicly available.

If you are interested in finding out more about what's happening in your area, you can get in touch with your local authority.

Any other questions?

To find out more, including guidance issued by the government to those managing connected places, visit:
www.gov.uk/guidance/secure-connected-places
www.ncsc.gov.uk/section/advice-guidance/

