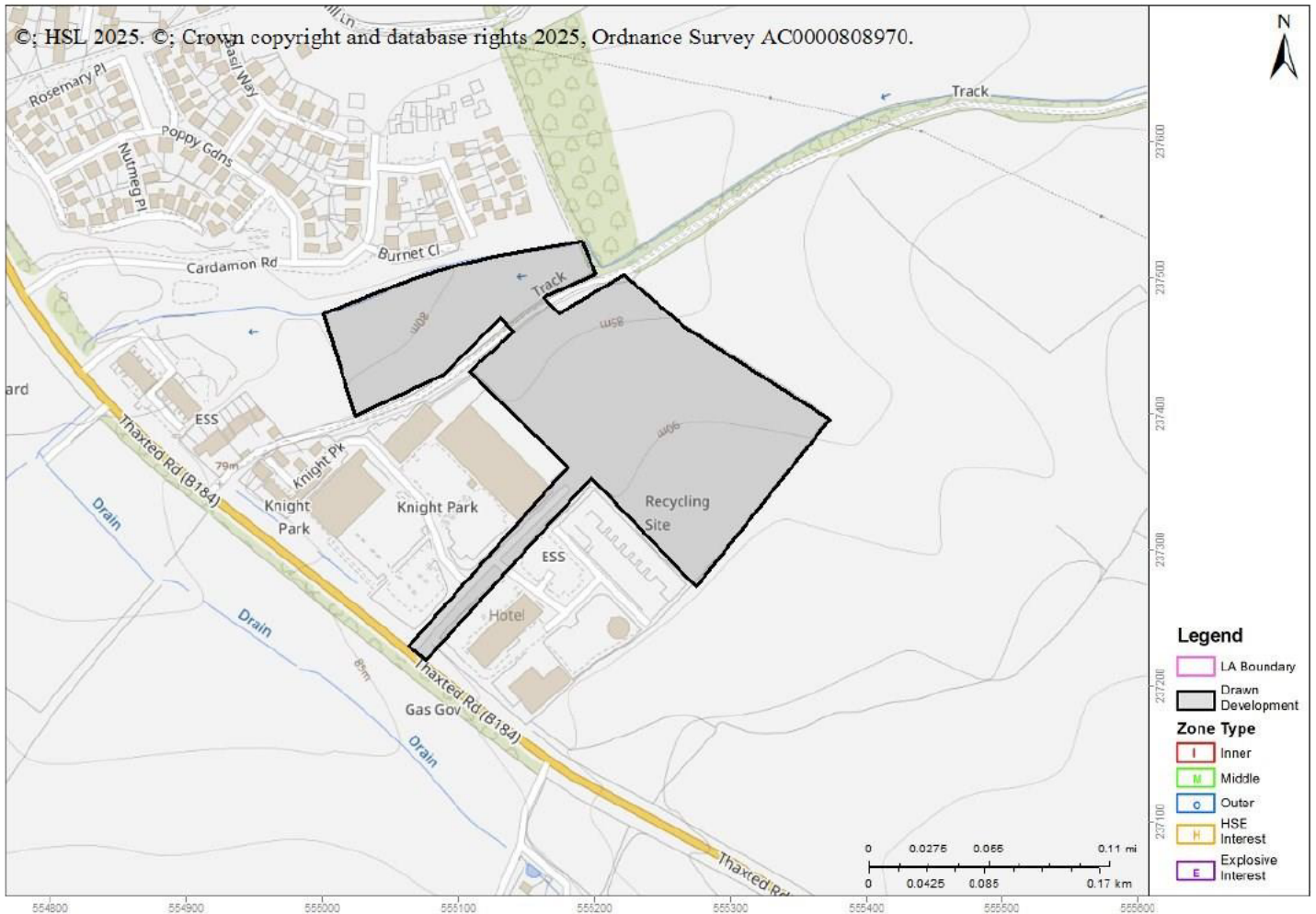


Advice : HSL-250204105451-1805 Does Not Cross Any Consultation Zones

Your Ref: S62A/2024/0075

Development Name: Land North of Thaxted Road, Saffron Walden

Comments: Reserved matters (appearance, landscaping, layout and scale); pursuant to outline planning permission ref: S62A/2023/0031 for the erection of up to 55 dwellings, associated landscaping and open space, with access from Knight Park.



The proposed development site which you have identified does not currently lie within the consultation distance (CD) of a major hazard site or major accident hazard pipeline; therefore at present HSE does not need to be consulted on any developments on this site. However, should there be a delay submitting a planning application for the proposed development on this site, you may wish to approach HSE again to ensure that there have been no changes to CDs in this area in the intervening period.

This advice report has been generated using information supplied by [REDACTED] at The Planning Inspectorate on 04 February 2025.