

TRR/P - 'Section 3'



CONSTRUCTION EXCLUSION ZONE - NO ENTRY

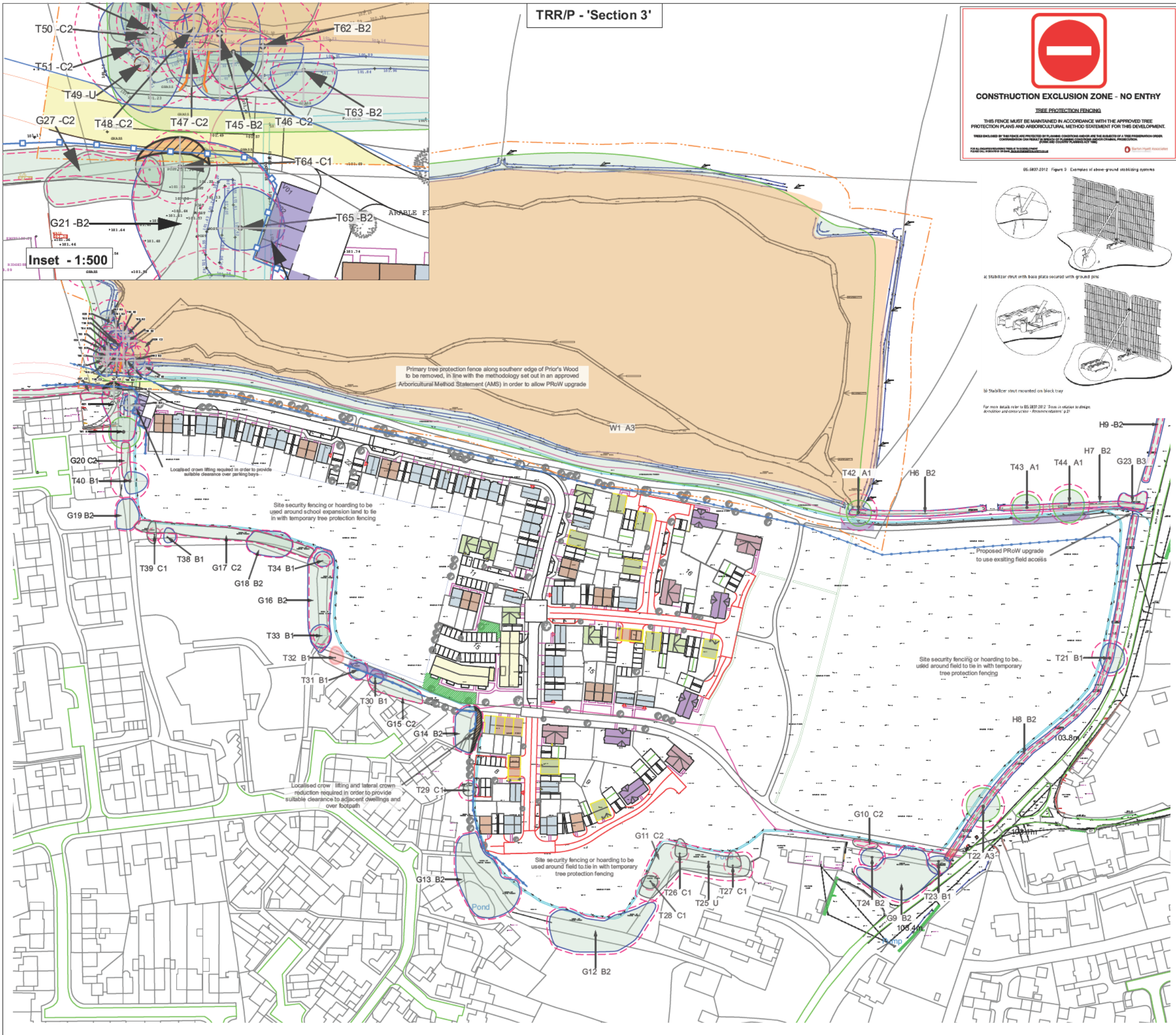
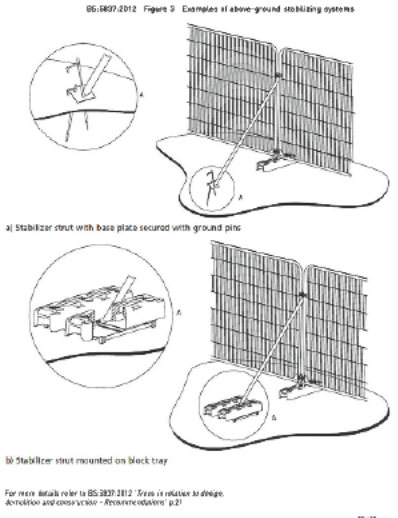
TREE PROTECTION FENCING

THIS FENCE MUST BE MAINTAINED IN ACCORDANCE WITH THE APPROVED TREE PROTECTION PLANS AND ARBORICULTURAL METHOD STATEMENT FOR THIS DEVELOPMENT.

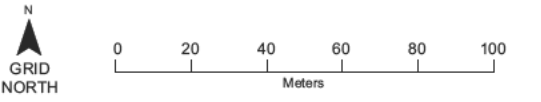
VIOLATIONS OF THIS FENCE ARE PROHIBITED BY LAW. CONDITIONS AND USE ARE THE SUBJECT OF A TREE PROTECTION ORDER. CONSTRUCTION OF THIS FENCE IS THE RESPONSIBILITY OF THE DEVELOPER AND MUST BE COMPLETED PRIOR TO THE START OF CONSTRUCTION.

FOR MORE DETAILS REFER TO BS:3837:2012 'Trees in relation to design, construction and construction - Preservation classes' p.21

- KEY**
-  Category A Tree - High quality (Retention highly desirable)
 -  Category A - Hedgerow, Group, Woodland - High quality (Retention highly desirable)
 -  Category B Tree - Moderate quality (Retention desirable)
 -  Category B - Hedgerow, Group, Woodland - Moderate quality (Retention desirable)
 -  Category C Tree - Low quality (May be retained but should not constrain development)
 -  Category C - Hedgerow, Group, Woodland - Low quality (May be retained but should not constrain development)
 -  Category U Tree - Very low quality (Mostly unsuitable for retention)
 -  Category U - Hedgerow, Group, Woodland - Very low quality (Mostly unsuitable for retention)
 -  Root Protection Area (RPA) - Layout design tool indicating the minimum area around a tree deemed to contain sufficient roots and soil volume to maintain the tree's viability
 -  Shrub mass/offsite tree/out of scope (OOS)
 -  * Tree/Group not on topo stem location given is estimate
- Ancient Tree / Woodland or Veteran Trees**
-  Ancient tree/woodland or Veteran tree: Important trees that require special cons
 -  Ancient tree/woodland or Veteran tree buffer: As per published standing advice Natural England and the Forestry Commission
- Impacts/Protection**
-  Tree of tree group to be removed
 -  Area of tree canopy to be pruned back/crown lifted
 -  Tree Protection Barrier to Figure 3 of BS5837:2012
 -  Area of 'No Dig' parking bay and path construction (separate Engineers specification to be prepared and an AMS report prepared)
 -  Area of reduced dig and narrowed highway construction through ASNW buffer - See AIA report for further details.



Inset - 1:500



PROJECT TITLE: **Bull Field, Takeley**

DRAWING TITLE: **Tree Retention, Removal & Protection Plan**

SCALE: **1:2000 @ A3** DRAWING NUMBER: **BHA_1030_05**

DRAWN BY: IM	APPROVED BY: RH	REVISION: -	SHEET: 1/1	DATE: 23/05/2023
---------------------	------------------------	--------------------	-------------------	-------------------------

LAYOUT USED WITHIN DRAWING: **10.20 General Arrangement**

CLIENT: **Weston Homes**

COORDINATE SYSTEM / DATUM: **British National Grid / Newlyn Datum (AOD)**

Crown copyright. All rights reserved. 2019 Emapiite Licence number 0100061264. Ordnance Survey Copyright Licence number 100054267.



Barton Hyett Associates
Arboricultural Consultants

Tel: 01386 576161 Website: www.barton-hyett.co.uk
Address: Office 5E, Deer Park Business Centre, Eckington, Pershore, Worcestershire, WR10 3DN