

0 1 2 5 10m

1. Do not scale from this drawing. Use figured dimensions only.
 2. This drawing may not be based on survey drawings and areas are therefore subject to change as part of the general design process and/or the obtention of a survey drawing study.

Type 10 - 3 units (5 dwellings)

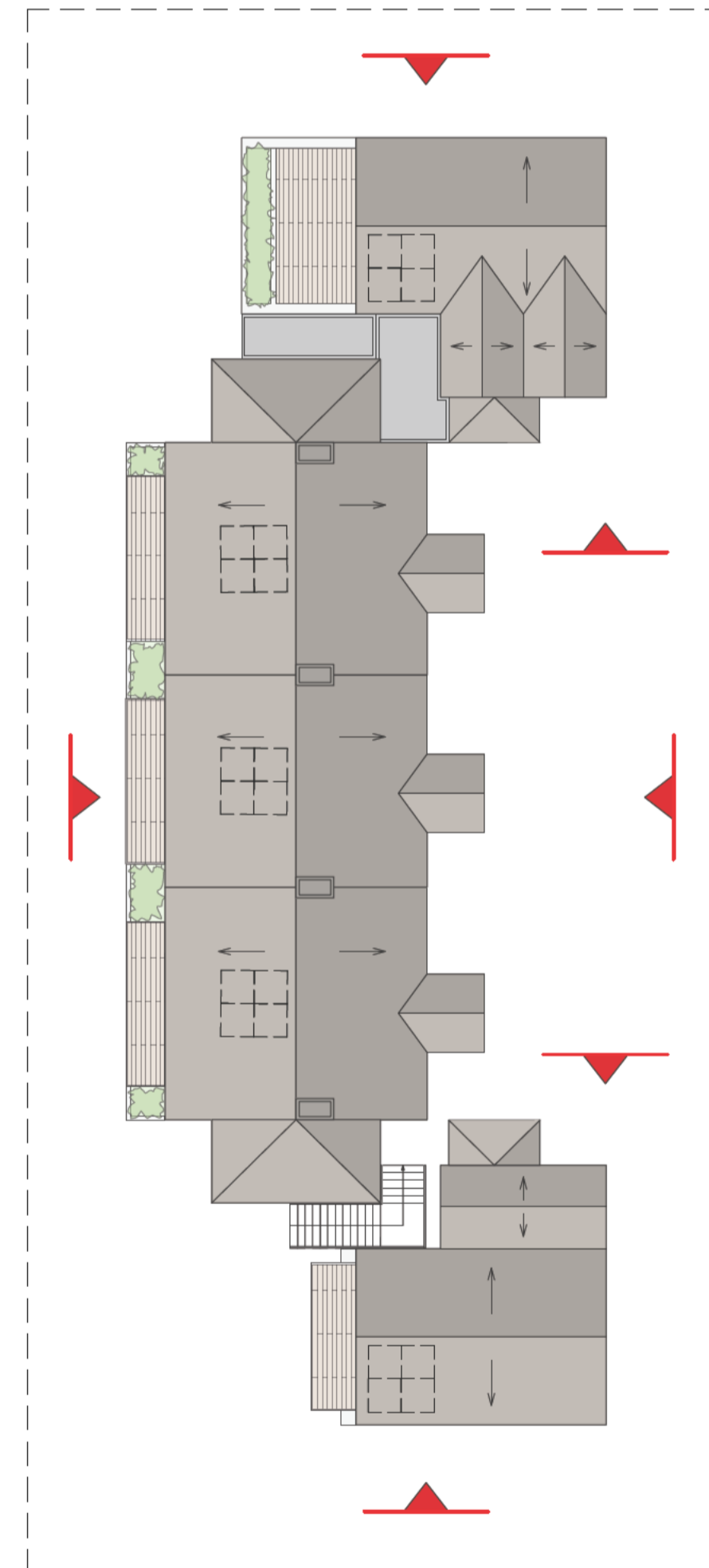
- D.05 - 1B2p 54sqm
- D.04 - 2B4p W 72sqm
- D.03 - 1B2p W 54sqm
- D.02 - 2B4p W 72sqm
- D.01 - 1B2p 54sqm



Type 10 - North elevation



Type 10 - South elevation



Planning Application



Stebbing development
 Land adjacent to Stebbing, Dunmow, Essex
 Plot 1a CM6 3SH/ Plot 1b CM6 3RA

PROJECT NO.	DWG NO.	REV.
21202	DR_0318-3	-
TITLE		
Housetype - Type 10 Elev. - 2x2B4p & 3x1B2p		

DATE	SCALE
23/01/2024	1:100@ A1 / 1:200@ A3

Alistair Downie studio, Home ground, Glebe Farm, Great Rissington, Cheltenham, Glouce, GL54 2JH
 T: +44 7973 154540 E: studio@alisterdownie.com W: www.alisterdownie.com
 All sizes in millimetres unless otherwise stated. Do not scale this drawing. © Alistair Downie studio, 2019

Type 10 - 3 units (5 dwellings)

- D.05 - 1B2p 54sqm
- D.04 - 2B4p W 72sqm
- D.03 - 1B2p W 54sqm
- D.02 - 2B4p W 72sqm
- D.01 - 1B2p 54sqm



Type 10 - West elevation



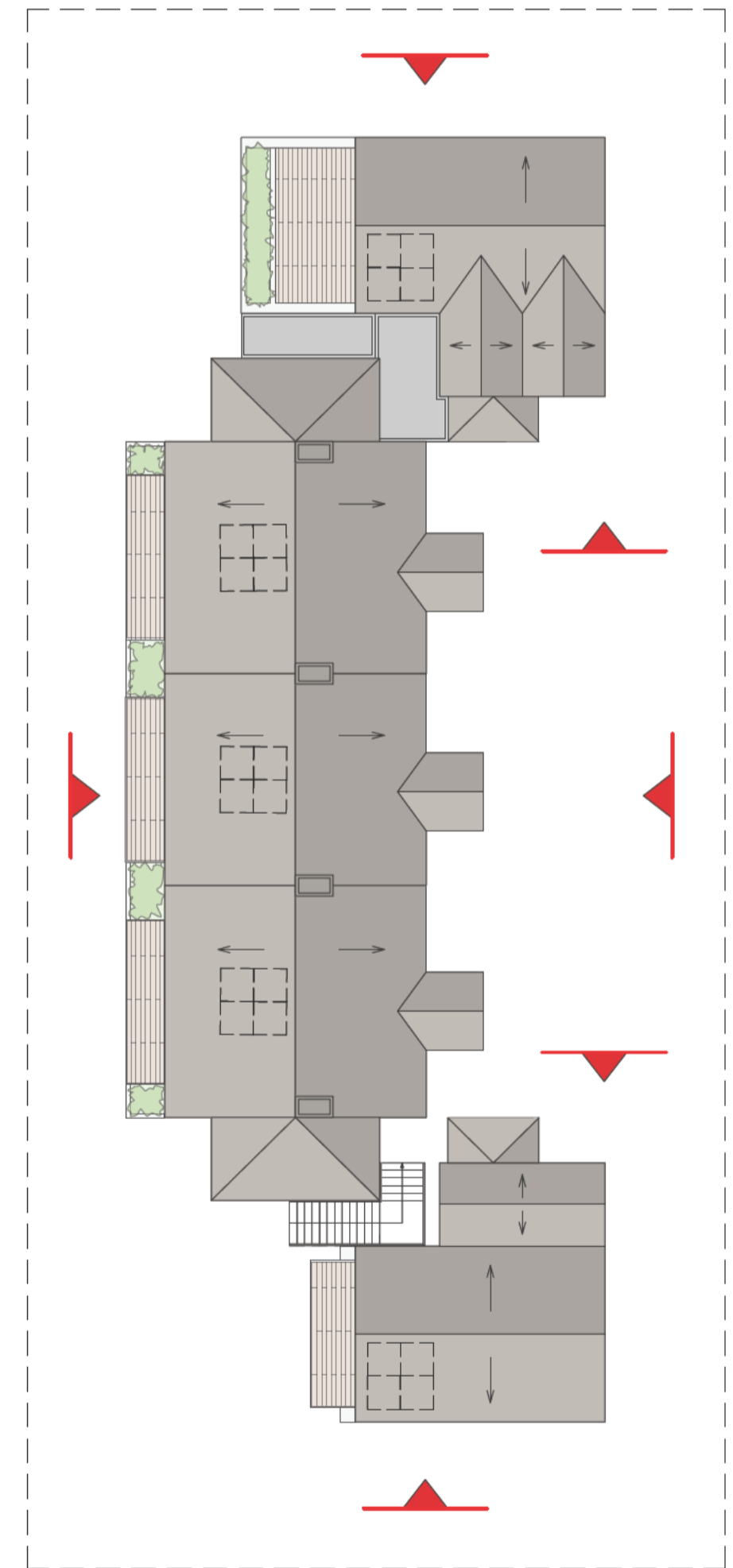
Type 10 - East elevation



Type 10 - East elevation 2 (internal courtyard)



Type 10 - West elevation 2 (internal courtyard)



Planning Application



Stepping development
 Land adjacent to Stepping, Dunmow, Essex
 Plot 1a CM6 3SH/ Plot 1b CM6 3RA

PROJECT NO.	DWG NO.	REV.
21202	DR_0318-4	-
TITLE		
Housetype - Type 10 Elev. - 2x2B4p & 3x1B2p		

DATE	SCALE
23/01/2024	1:100@ A1 / 1:200@ A3