

**RECORD OF THE HABITATS REGULATIONS ASSESSMENT UNDERTAKEN
UNDER REGULATION 5 OF THE OFFSHORE PETROLEUM ACTIVITIES
(CONSERVATION of HABITATS) REGULATIONS 2001 (As Amended).**

BP Endurance Field Bunter Outcrop Survey 2023

Issued March 2023
Rev 1

CONTENTS

1	INTRODUCTION	1
2	SURVEY DESCRIPTION	3
3	DESIGNATED SITES	5
	<i>Qualifying features</i>	5
	HARBOUR PORPOISE	6
	PREY SPECIES	9
	INFORMATION SOURCES	10
4	POTENTIAL IMPACTS	11
	MARINE MAMMALS	11
	<i>Fatal effects</i>	12
	<i>Physical injury</i>	12
	<i>Behavioural Change</i>	12
	SECONDARY EFFECTS	12
5	NOISE MODELLING	13
6	EFFECTIVE DETERRENT RADIUS / RANGE	14
7	CONSERVATION OBJECTIVES	15
	SOUTHERN NORTH SEA SAC	15
8	IN-COMBINATION IMPACTS	19
	RENEWABLE ENERGY ACTIVITY	19
	CABLE LAYING ACTIVITY	20
	AGGREGATE EXTRACTION AND DREDGING ACTIVITY	21
	OIL AND GAS ACTIVITY	21
	<i>Crosgan appraisal well</i>	22
	<i>NW Bell ZX and Murdoch KM Survey</i>	23
	<i>Johnston Survey</i>	23
	<i>Q43 Lodestone West 2023- multi-client regional survey</i>	24
	<i>Hewett Field Bathymetric and Seismic Survey</i>	24
	SHIPPING	24
	FISHING ACTIVITY	25
	IN-COMBINATION CONCLUSION	25
9	LIKELY SIGNIFICANT EFFECTS TEST	26
	HARBOUR PORPOISE	26
	LIKELY SIGNIFICANT EFFECTS TEST - CONCLUSIONS	26
10	APPROPRIATE ASSESSMENT	28
	SOUTHERN NORTH SEA SAC (HARBOUR PORPOISE)	28
	<i>Physical Injury</i>	28
	<i>Disturbance</i>	29
	THRESHOLD APPROACH	30
	<i>Daily Threshold</i>	30
	<i>Seasonal Threshold</i>	30
	<i>Conclusion</i>	31

11	IN-COMBINATION ASSESSMENT	33
	DOGGER BANK A PILE-DRIVING	33
	CROSGAN APPRAISAL WELL	34
	<i>NW Bell ZX and Murdoch KM Survey</i>	35
	JOHNSTON GEOPHYSICAL SURVEY	36
	<i>NW Bell ZX and Murdoch KM Survey</i>	37
	<i>Construction pile-driving at Dogger Bank B offshore wind farm,</i>	37
	<i>Q43 Lodestone West 2023- multi-client regional survey</i>	38
	<i>Hewett Field bathymetric and seismic survey.</i>	39
	IN-COMBINATION SCENARIOS	39
	IN-COMBINATION IMPACTS ON SOUTHERN NORTH SEA SAC: HARBOUR PORPOISE.	40
	NOISE MODELLING	40
	<i>Physical Injury</i>	40
	<i>Disturbance</i>	40
	IN-COMBINATION THRESHOLD APPROACH	41
	IN-COMBINATION ASSESSMENT SOUTHERN NORTH SEA SAC CONCLUSIONS	43
12	MITIGATION	44
13	CONCLUSIONS	45
14	REFERENCES	46

TABLES

Table 1: Survey parameters.	4
Table 2: Predicted extent of potential auditory injury (PTS) and disturbance from the proposed surveys (Source BP 2023b).	13
Table 3: Precautionary Effective Deterrent Ranges (EDR) (Source: JNCC 2020b).	14
Table 4: Estimated extent sound levels capable of causing displacement disturbance occur in order to impact on site integrity.	18
Table 5: Offshore wind farms located within 26 km of the Southern North Sea SAC.	20
Table 6: Estimated extent of seasonal disturbance on harbour porpoise from proposed Endurance survey within the SAC.	31
Table 7: Estimated extent of daily and seasonal disturbance on harbour porpoise from proposed pile-driving at Dogger Bank A offshore wind farm within the SAC.	34
Table 8: Estimated extent of seasonal disturbance on harbour porpoise from proposed conductor pile-driving within the Southern North Sea SAC.	34
Table 9: Estimated extent of seasonal disturbance on harbour porpoise from proposed VSP survey within the SAC.	35
Table 10: Estimated extent of daily and seasonal disturbance on harbour porpoise from proposed NW Bell ZX geophysical site survey within the SAC.	36
Table 11: Estimated extent of daily and seasonal disturbance on harbour porpoise from proposed Johnston geophysical survey within the SAC.	37
Table 12: Estimated extent of daily and seasonal disturbance on harbour porpoise from proposed NW Bell ZX geophysical site survey within the SAC.	37
Table 13: Estimated extent of daily and seasonal disturbance on harbour porpoise from proposed pile-driving at Dogger Bank B offshore wind farm within the SAC.	38
Table 13: Estimated extent of daily and seasonal disturbance on harbour porpoise from proposed pile-driving at Dogger Bank B offshore wind farm within the SAC.	39
Table 14: Realistic worst-case in-combination daily threshold (%).	42
Table 15: In-combination seasonal thresholds (%).	42

FIGURES

Figure 1: Location of the proposed BP Endurance Bunter Outcrop Survey showing survey and greater working areas	3
Figure 2: Location of proposed BP Endurance Bunter Outcrop survey and designated sites.	5
Figure 3: Existing oil and gas infrastructure within the Southern North Sea SAC.	22
Figure 4: Timeline of known activities within the Southern North Sea SAC that could have an in-combination impact in summer 2023.	40

1 INTRODUCTION

- 1.1 Council Directive 92/43/EC on the conservation of natural habitats and of wild fauna and flora (the Habitats Directive) and Council Directive 2009/147/EC on the conservation of wild birds (the Birds Directive) aim to ensure the long-term survival of certain habitats and species by protecting them from the adverse effects of plans and projects.
- 1.2 The Habitats Directive provides for the designation of sites for the protection of habitats and species of European importance. These sites are called Special Areas of Conservation (SACs). SACs form part of a network of protected sites across Europe called Natura 2000.
- 1.3 Before SACs are designated, the Government will undertake a public consultation. Prior to consultation the site is considered to be a draft SAC (dSAC). At the public consultation stage, the site is referred to as a possible SAC (pSAC). When a pSAC is submitted to the European Commission it becomes a candidate SAC (cSAC), at which point it is legally afforded the same protection as a SAC. Following adoption by the European Community the site becomes a Site of Community Importance until formal designation by the Government when the site becomes a SAC. The Southern North Sea SAC became designated as a SAC in February 2019 (JNCC 2019a).
- 1.4 Any plan or project, which either alone or in-combination with other plans or projects would be likely to have a significant effect on a qualifying site must be subject to an Appropriate Assessment to determine the implications for a site's integrity and conservation objectives. Such a plan or project may only be agreed after ascertaining that it will not adversely affect the integrity of a European Site unless there are imperative reasons of overriding public interest for carrying out the plan or project.
- 1.5 The Offshore Petroleum Activities (Conservation of Habitats) Regulations 2001 (as amended) transpose the Directives into UK law for activities consented under the Petroleum Act 1998. The Offshore Petroleum Activities (Conservation of Habitats) (Amendment) Regulations 2007 extend certain provisions of the 2001 regulations.
- 1.6 Regulation 5(1) of the 2001 Regulations provides that: *The Secretary of State shall, before granting any Petroleum Act licence, any consent, any authorisation, or any approval, where he considers that anything that might be done or any activity which might be carried on pursuant to such a licence, consent, authorisation or approval is likely to have a significant effect on a relevant site, whether individually or in-combination with any other plan or project, including but not limited to any other relevant project, make an appropriate assessment of the implications for the site in view of the site's conservation objectives.*



- 1.7 An application to undertake a Marine Survey by BP Exploration Operating Company Limited (hereafter BP) was submitted to the former Department for Business Energy and Industrial Strategy (BEIS) on 31 January 2023 (BP 2023a).
- 1.8 This is a record of the Appropriate Assessment in the form of a Habitats Regulations Assessment (HRA), undertaken by the Secretary of State for Department of Energy Strategy and Net Zero (DESNZ) in respect of a proposed BP Endurance Field Bunter Outcrop Survey that may cause a significant effect on the qualifying features of the Southern North Sea SAC.
- 1.9 The proposed survey relevant to this assessment is not directly connected with, or necessary to, the management of any European sites but may affect them. The purpose of this HRA is to determine whether the proposed surveys will adversely affect the integrity of any National Site Network designated site.

2 SURVEY DESCRIPTION

- 2.1 The following is a brief summary of the proposed survey, further details may be found within the application (BP 2023a, b).
- 2.2 The proposed three-dimensional high-resolution seismic survey will be undertaken in the Southern North Sea across UKCS blocks 43/27 and 43/28. The area to be surveyed covers no more than 10 km² although the Greater Working Area covers 233 km² over UKCS blocks 43/22, 43/23, 43/27 and 43/28 (Figure 1). The survey area is approximately 6.5 km in length and 1.5 km wide.
- 2.3 The survey will acquire data that could not be acquired during a previous seismic survey of the area undertaken in 2022 (GS/1332).

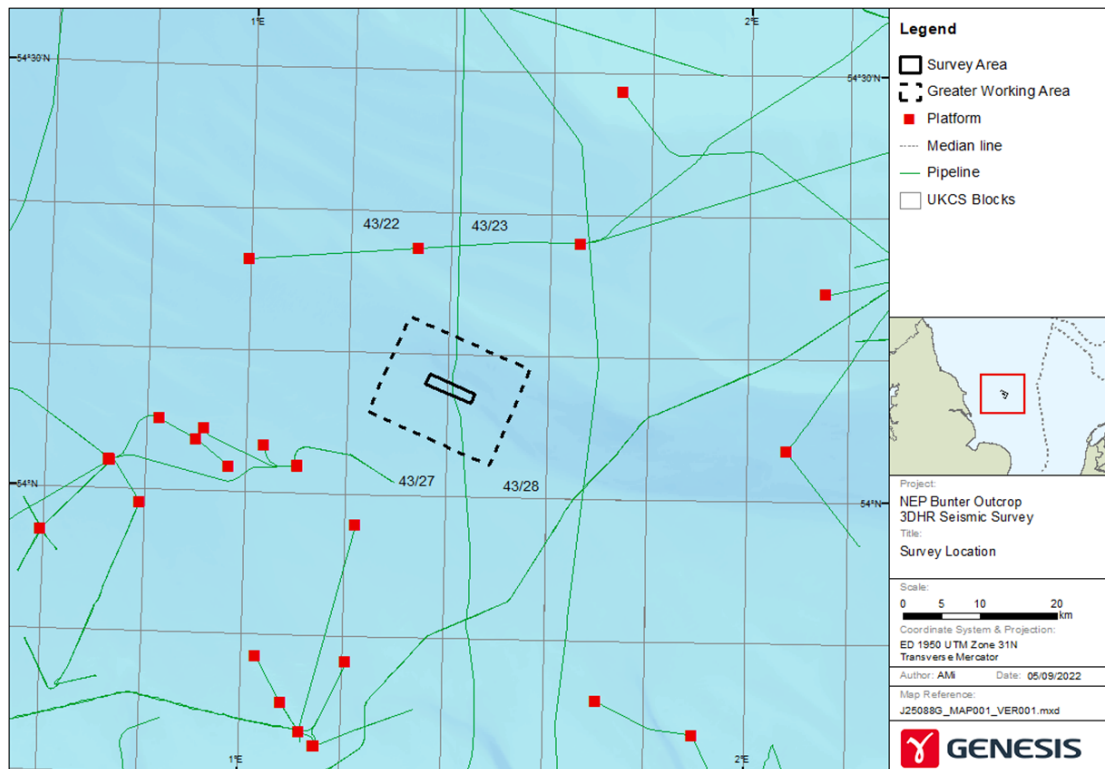


Figure 1: Location of the proposed BP Endurance Bunter Outcrop Survey showing survey and greater working areas .

- 2.4 The survey is scheduled to take place between 25 March and 31 May 2023 and expected to last a total of 20 days with no more than seven days of operating airguns (BP 2023a,b).
- 2.5 Details of the sound sources from the equipment to be used is presented in Table 1 (BP 2023a).



Table 1: Survey parameters.

Array Parameter	Greater NEP Area
Survey	Single Array or Dual Array airguns
Duration (days)	Up to 30 days
Source	4 x 40 cu. in.
Total volume (cu. In).	160
Sound pressure (dB re 1 μ Pa (0-p))	245.5
Sound pressure (dB re 1 μ Pa (p-p))	250.2
Sound exposure level – (dB re 1 μ Pa ² s)	213.8
Peak frequency (Hz)	10
Source point interval (m)	6.25
Towed depth (m)	4
Vessel speed (knots)	4.0

- 2.6 The proposed seismic survey will be undertaken along predetermined lines. The number of lines and total length of line to be surveyed are not reported in the application. There will be 55 line turns with each line turn estimated to last approximately 60 minutes (BP 2023a,b).

3 DESIGNATED SITES

- 3.1 The proposed survey is being undertaken in waters within or adjacent to a number of designated sites and it is recognised that potential impacts that could cause a likely significant effect could occur to a number of qualifying species both within and outwith designated sites.
- 3.2 Based on the information presented within the application, including the results from the noise modelling undertaken in support of the application, One SAC has been identified as having qualifying species at risk of a likely significant effect from the proposed survey (Figure 2).

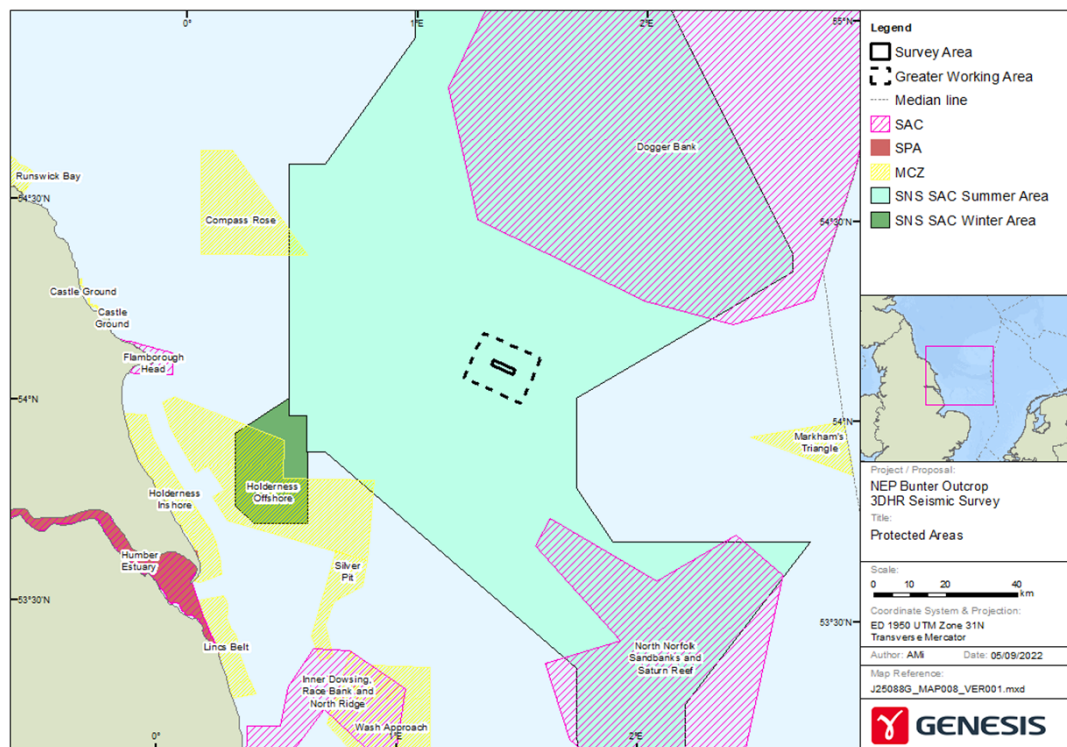


Figure 2: Location of proposed BP Endurance Bunter Outcrop survey and designated sites.

- 3.3 The qualifying sites and species relevant to this HRA are:
- Southern North Sea SAC (Harbour porpoise),
- 3.4 The proposed Greater Working Area and Survey Area overlap with the Southern North Sea SAC.

Qualifying features

- 3.5 Based on the information presented within the application and advice received from consultation (JNCC xxxx) it has been determined that the HRA should consider alone and in-combination the potential direct and indirect impacts on:
- Harbour porpoise.



Harbour porpoise

- 3.6 The harbour porpoise (*phocoena phocoena*) is a qualifying species for the:
- Southern North Sea SAC,
- 3.7 The harbour porpoise is the smallest and most abundant cetacean species in UK waters. They occur widely across shelf waters predominantly either individually or in small groups but larger aggregations have been reported (Defra 2015), with group sizes varying with season (Clark 2005). Harbour porpoise have a very broad distribution occurring predominantly over the continental shelf. Higher densities occur in areas of up-wellings and strong tidal currents and in water depths of predominantly between 20 and 40 m (Clark 2005, Whaley 2004). Their distribution may also be strongly correlated with seabed type, with areas of sandy gravel being preferred and this may be linked to prey availability (Clark 2005).
- 3.8 Harbour porpoise occur widely across the North Sea. Data from the three Small Cetacean Abundance in the North Sea (SCANS) surveys indicate that there may have been a southward shift in the distribution of harbour porpoise in the North Sea. In the early 1990's harbour porpoise were widespread but appear to have occurred predominantly around eastern Scotland and the northern North Sea to the southern North Sea (Hammond *et al.* 2013). Since the 1990's harbour porpoise continue to be widespread across the North Sea but densities have increased in the southern and central North Sea. The cause of this apparent change in the distribution of harbour porpoises across the North Sea is unclear but may be related to changes in prey availability (IAMMWG *et al.* 2015).
- 3.9 Following the completion of the most recent SCANS survey (SCANS III), the latest estimated harbour porpoise populations within the whole of the SCANS survey area is 424,245 (CV 313,151 – 596,827). Since 1994 the population of harbour porpoises within the SCANS surveyed area has remained relatively stable (Hammond *et al.* 1995, Hammond 2006, Hammond *et al.* 2017).
- 3.10 There are three Management Units identified for harbour porpoise in the north-east Atlantic, of which, the Southern North Sea SAC lies within the North Sea Management Unit. The harbour porpoise population within the North Sea Management Unit was originally estimated to be 227,298 (176,360 – 292,948) (IAMMWG 2015). This estimated population of harbour porpoise is recognised to have been derived from data collected in 2005 and 2016 during a single month and that the harbour porpoise population within the SAC will vary across seasons and years. The population estimated from the Joint Cetacean Protocol (JCP), where abundance and distribution data from multiple sources collected over a period of time have been integrated, is 333,808 individuals (JNCC 2017a). This population estimate has been used for the purposes of this assessment.

- 3.11 The SAC selection assessment document estimates that the site holds 18,500 harbour porpoise (98% C.I. 11,864 – 28,899) (JNCC 2017b; 2019a), which was, at the time the estimate was made, 8.1% of the North Sea Management Unit population (Hammond *et al.* 2013, IAMMWG 2015).
- 3.12 Harbour porpoise densities vary seasonally and across the Southern North Sea SAC (Evans and Teilmann 2009). Site-specific surveys undertaken by wind farm developers have shown considerable variation in the spatial and temporal distribution of harbour porpoises across years (e.g. Forewind 2013, SMart Wind 2017). Typically, peak abundance has been reported to occur between May and July at sites across the Dogger Bank area and between September and April at sites further south (e.g. Forewind 2014, SMart Wind 2015, EAOWL 2015). Lowest reported abundance across nearly all wind farm surveyed areas occurs between November and February, although the poorer survey conditions that occur predominantly during the winter months may be a contributing factor in the lower number of harbour porpoise recorded during this period.
- 3.13 Based on data in the JCP database highest densities in the central and northern area of the SAC occur during the summer period with modelled harbour porpoise densities greater than 3.0 per km² occurring widely. During the winter period the distribution of harbour porpoise in the southern North Sea changes, with reduced densities over the central and northern area but an increase in densities in nearshore waters and the southern part of the SAC (Heinänen and Skov 2015).
- 3.14 Surveys undertaken across the southern North Sea, including areas within and encompassing the SAC, have reported lower densities of harbour porpoise than that estimated from JCP data. Densities reported from SCANS III surveys are from between 0.888 ind./km² in SCANS block O and 0.607 ind./km² in SCANS block L (Hammond *et al.* 2017). Similarly, data obtained across the Dogger Bank area including the Southern North Sea SAC, in 2011 recorded a density of 1.88 ind./km² (Gilles *et al.* 2012). Data obtained from surveys undertaken at offshore wind farms located within or adjacent to the SAC indicate densities vary across the site and across seasons. Mean densities reported from surveys undertaken by offshore wind farm developers range from 0.11 ind./km² at Triton Knoll offshore wind farm including a 1 km buffer to 2.87 ind./km² within the Hornsea subzone 3 wind farm area plus a 4 km buffer (TKOWFL 2011, SMart Wind 2017).
- 3.15 Tagging studies undertaken in Denmark indicate that harbour porpoises are highly mobile and range widely in the North Sea, with individuals tagged in the Skagerrak travelling up to 100 km per day, with a mean distance of 24.5 km per day (Sveegaard 2011). Individuals tagged in Danish waters were recorded off the east coasts of England and Scotland (Sveegaard 2011).
- 3.16 Harbour porpoise swimming speeds vary with the highest recorded swimming speeds being 4.3 m/s (Otani *et al.* 2000). Mean recorded speeds are typically around 1 m/s (Otani *et al.* 2000, Kastelein *et al.* 2018). When disturbed by noise harbour porpoise can increase swimming speeds with increasing sound levels. Studies using playback experiments of pile-driving sounds have



- reported increases in swimming speed from an average of 1.2 m/s to 2.0 m/s at sound levels of 154 dB re 1 μ Pa that were sustained for at least 30 minutes (Kastelein *et al.* 2018).
- 3.17 Although harbour porpoises may dive to depths of up to 226 m and remain submerged for up to five minutes, they more frequently undertake relatively shallow dives of a short duration, with a mean depth of 14 m and duration of 44 seconds (Santos and Pierce 2003, Otani *et al.* 1998, 2000). Studies undertaken on 14 tagged harbour porpoise in Danish and adjacent waters reported that on average harbour porpoise spend 55% of the time in the upper 2 m of the surface waters. The most frequent dive depths were between 14 m and 32 m, with the maximum depth dived of 132 m. The number of dives per hour increased from an average of 29 dives hr^{-1} between April and August to 43 dives hr^{-1} in October and November when it was presumed that higher levels of foraging activity occurred to compensate for the higher energy requirements required during the cooler winter period (Teilmann *et al.* 2007).
- 3.18 Harbour porpoise use echolocation to detect and track individual prey and are opportunistic feeders, foraging close to the seabed or near the sea surface, preying on a wide range of fish species including, herring (*Clupea harengus*), whiting (*Merlandius merlangus*), Gadoids spp. sprats (*Sprattus sprattus*), gobi (*Pomatoschistus minutus*) and sandeels (*Ammodytes* spp.), and their prey will vary during and between seasons (DeRuiter 2008, Santos and Pierce 2003, IAMMWG *et al.* 2015). The prey of harbour porpoise may change over time with a reported long-term shift in prey from clupeid species to sandeels and gadoid species (IAMMWG *et al.* 2015), indicating that harbour porpoise may be opportunistic feeders capable of feeding on a variety of species.
- 3.19 Studies undertaken in Denmark indicate that their local distribution may be correlated with prey availability (Sveegaard 2011). Due to the relatively high metabolic rate of harbour porpoise and the relatively small size of their predominant prey it has been suggested that harbour porpoise require a reliable source of food and frequent food consumption in order to maintain their body weight, with increased consumption in cooler environments (Kastelein *et al.* 1997, Wisniewska *et al.* 2016; 2018).
- 3.20 Harbour porpoise have a maximum life expectancy of 24 years, with an average life expectancy of around 12 years in UK waters (Lockyer 2003, Learmouth *et al.* 2014). Females become sexually mature at between three and five years old (Lockyer 2003, Learmouth *et al.* 2014). Breeding is thought to occur primarily during the summer months between May and September, particularly in August, with calving 10 months later. Calves are nursed for eight to ten months but may remain with the mother until a new calf is born (Defra 2015, Lockyer 2003, Weir *et al.* 2007).
- 3.21 The range at which marine mammals, including harbour porpoise, may be able to detect sound arising from offshore activities depends on the hearing ability of the species and the frequency of

the sound. Other factors that can affect the potential impact include ambient background noise, which can vary depending on water depth, seabed topography and sediment type. Natural conditions such as weather and sea state and existing sources of human produced sound can also reduce the auditory range.

- 3.22 Porpoises are generally considered to be ‘high frequency’ or ‘very high frequency’ specialists with a relatively poor ability to detect lower frequency sounds (Southall *et al.* 2007, 2019). Studies undertaken on captive harbour porpoises indicate that porpoises have a functional hearing range of between 250 Hz and 180 kHz with their best hearing between 16 to 140 kHz and their maximum sensitivity between 100 and 140 kHz. It is within the frequency range of 130 to 140 kHz that harbour porpoise echolocate (Miller and Wahlberg 2013).
- 3.23 Their ability to detect sound below 16 kHz or above 140 kHz falls sharply (Kastelein *et al.* 2012, 2015, Southall *et al.* 2007). Harbour porpoise are therefore most sensitive to sound sources between 16 to 140 kHz and, although potentially audible, they are unlikely to be sensitive to sound either above or below those frequencies.
- 3.24 Harbour porpoise use echolocation to communicate and detect prey. Reported sound levels produced range from between 166 to 194 re: 1 µPa (rms SPL) and 178 and 205 dB re. 1 µPa (peak – peak SPL), with a mean level of 191 dB re. 1 µPa (peak – peak SPL) and within the peak frequency range of 110 to 150 kHz (Villadsgaard, *et al.* 2007, Miller and Wahlberg 2013, MMO 2015).

Prey species

- 3.25 Fish are not qualifying species for the Southern North Sea SAC. However, potential impacts on fish that are prey for harbour porpoise could affect the integrity of the site by reducing their prey base. Harbour porpoise prey on a variety of fish species that could be impacted by the proposed survey including gobies, Sandeel Spp., whiting, herring and sprat (JNCC and NE 2019).
- 3.26 Sandeels are one of the most abundant fish in the North Sea occurring widely over suitable sandy substrates where, once the larvae have settled, they remain in the area (Heath *et al.* 2011). Although widespread, sandeel distribution is highly substrate specific as they depend on seabed habitat comprising a high proportion of medium and coarse sands (particle size 0.25 - <2 mm) with low silt content (Holland *et al.* 2005).
- 3.27 Between September and April sandeels remain largely buried in the seabed except when spawning during December and January and when feeding during the late spring and summer (Greenstreet *et al.* 2006, Van der Kooij *et al.* 2008).
- 3.28 Within the Southern North Sea SAC sandeels occur across the site with their main spawning area over the Dogger Bank and a wider nursery area across most of the SAC (Judd *et al.* 2011).



- 3.29 Fish hearing is based on detecting particle motion directly stimulating the inner ear. However, those with swim bladders are also able to detect pressure waves and can detect a wider range of frequencies and sounds of lower intensity than fishes without swim bladders (Popper 2003). Fish with swim bladders that possess a coupling mechanism between the swim bladder and the auditory system, e.g. herring and sprats, are recognised to be hearing specialists. Fish that have swim bladders but lack a mechanised coupling mechanism or do not have swim bladders, e.g. sandeel spp. are considered hearing generalists and have a relatively lower sensitivity to sound than fish that have swim bladders and a coupling mechanism.
- 3.30 Studies on the behaviour of fish from noise, largely using play-back experiments, have reported a range of behavioural responses including avoidance behaviour, changes in swimming speed and direction (e.g. Hawkins 2014, Mueller-Blenkle *et al.* 2010) and reduced antipredator responses (Everley *et al.* 2016).
- 3.31 Sandeels are not considered to have sensitive hearing (Popper *et al.* 2014). Studies undertaken using airguns indicate that sandeels have distinct but weak reactions to seismic airguns with initial startle responses reducing in frequency with on-going noise, and no increased mortality was detected (Hassel *et al.* 2004).
- 3.32 There are limited studies assessing potential impacts on eggs and larvae. Results indicate that there is potential for increase in mortality when larvae are exposed to an airgun sound source with peak sound pressure levels of 220-242 dB re 1 μPa^2 (unknown measure), but only within 5 m of the airgun (Popper *et al.* 2014).

Information Sources

- 3.33 This HRA draws on a number of information sources relating to the proposed project and the site designation which should be read in conjunction with this report including:
- BP (2023a). Application GS/1500/0 (Version 1) Application to carry out a Marine Survey. 31 January 2023.
 - BP (2023b). *Bunter Outcrop 3DHR Seismic Survey*. Northern Endurance Partnership
 - Natura 2000 – Standard Data Form. Site: UK0030395. Southern North Sea. JNCC (2019b).
 - Guidance for assessing the significance of noise disturbance against Conservation Objectives of harbour porpoise SACs. (England, Wales & Northern Ireland). JNCC (2020).
 - Harbour Porpoise (*Phocoena phocoena*) possible Special Area of Conservation: Southern North Sea. Conservation Objectives and Advice on Activities. JNCC and NE (2019).
- 3.34 References to technical papers and other documents are given in the text as necessary.

4 POTENTIAL IMPACTS

- 4.1 The potential impacts arising from the proposed survey are sound from the seismic airguns and the physical presence of the vessel. No other sources of potential impact that could affect qualifying habitats or species have been identified.
- 4.2 The airguns used in seismic surveys are pneumatically-driven impulsive transducers that generate high intensity, low frequency, short duration sound pulses at regular intervals of typically between every 10 to 15 seconds. The seismic source geometry is designed to focus the output from the array vertically downwards minimising any horizontally propagating sounds (OGP/IAGC 2004). The level of sound generated by an airgun array depends on various factors including gun volume, array design, the number of airguns, spacing and air pressure. Field measurements of the sound emitted by airgun arrays used by the oil and gas industry show that levels of source intensity expressed as peak SPL range from 235 to 259 dB re 1 μ Pa- m (Richardson *et al.* 1995, OSPAR 2009). The frequency range of emitted energy is typically in the 5 Hz to 500 Hz range and strongest from 10 to 120 Hz, but with some energy in the 500 Hz to 1 kHz range (Richardson *et al.* 1995, Hermannsen *et al.* 2015).

Marine Mammals

- 4.3 There is a substantial volume of literature describing the potential effects of sound on marine mammals, and summarised in e.g. Thomsen *et al.* (2006), Southall *et al.* (2007) and OSPAR (2009).
- 4.4 There are four main types of potential effect from noise that are recognised within the marine environment:
- *Fatal effects* caused by significant levels of noise in close proximity to the receptor.
 - *Physical injury*, specifically hearing impairment, which can be permanent or temporary. These effects can impact on the ability of marine mammals to communicate, forage or avoid predators.
 - *Behavioural effects* such as avoidance, resulting in displacement from suitable feeding or breeding areas, and changes in travelling routes.
 - *Secondary impacts* caused by the direct effects of noise on potential prey causing a reduction in prey availability.
- 4.5 The range at which marine mammals may be able to detect sound arising from offshore activities depends on the hearing ability of the species and the frequency of the sound with harbour porpoise more sensitive to relatively high frequencies compared with many other marine mammals. Other factors which may affect the potential impact of sound on marine mammals includes ambient background noise, which can vary depending on water depth, seabed



topography and sediment type. Natural conditions such as weather and sea state and other existing sources of human produced sound, e.g. shipping, can also reduce the auditory range.

Fatal effects

- 4.6 If source peak pressure levels from the proposed operations are high enough there is the potential for a lethal effect on marine mammals. Studies suggest that potentially lethal effects can occur to marine mammals when the peak pressure level is greater than 246 or 252 dB re. 1 μ Pa (Parvin *et al.* 2007). Damage to soft organs and tissues can occur when the peak pressure level is greater than 220 dB re. 1 μ Pa.

Physical injury

- 4.7 Underwater sound has the potential to cause hearing damage in marine mammals, either permanently or temporarily. The potential for either of these conditions to occur is dependent on the hearing bandwidth of the animal, the duty cycle of the sound source and duration of the exposure (Southall *et al.* 2019, OSPAR 2009).

Behavioural Change

- 4.8 Potential changes in behaviour may occur depending on the sound source levels and the species' and individuals' sensitivities. Behavioural changes can include changes in swimming direction, diving duration, avoidance of an area and reduced communication.
- 4.9 Masking effects may also cause changes in the behaviour as the level of sound may impair the detection of echolocation clicks and other sounds that species use to communicate or detect prey, thus causing them to alter their behaviour.

Secondary Effects

- 4.10 There is potential for impacts on prey species to affect harbour porpoise, in particular possible impacts of noise on fish species.

5 NOISE MODELLING

- 5.1 To assess the potential environmental impacts from the proposed survey the applicant has undertaken noise modelling using outputs derived from a Gundalf airgun model and a directional propagation model (BP 2023b).
- 5.2 Results from the modelling indicate the extent at which the onset of a Permanent Threshold Shift (PTS), Temporary Threshold Shift (TTS) or disturbance could occur from the airguns during the proposed survey on marine mammals.
- 5.3 The modelling indicates that there is a risk of PTS to harbour porpoise from the airgun array to be used during the 3D survey within 100 m of the sound source, based on the cumulative SEL metric (Table 2) (BP 2023b).
- 5.4 The results from the modelling indicate that there is a risk of behavioural effects, e.g. displacement and disturbance to a harbour porpoise within an area of 6.7 km, based on the use of a 160 cu. in. airgun and a threshold at which disturbance occurs of 145 dB re 1 $\mu\text{Pa}^2\text{s}$ (Table 2) (BP 2023b).
- 5.5 The potential area over which disturbance to harbour porpoise is predicted to arise at any one point during the surveys has not been presented in the application. However the overall area of impact for the duration of the survey is estimated to be 188 km² (BP 2023b).
- 5.6 Injury to fish is not expected to arise from the use of airguns based on a cumulative SEL. There are no data available to assess the potential area of disturbance to fish species.

Table 2: Predicted extent of potential auditory injury (PTS) and disturbance from the proposed surveys (Source BP 2023b).

Survey	PTS		Disturbance	
	Distance (m)	Area (km ²)	Distance (km)	Area (km ²)
3DHR seismic survey	100	0.031	6.7	188



6 EFFECTIVE DETERRENT RADIUS / RANGE

- 6.1 The Effective Deterrent Radius / Range (EDR) has been proposed by the Statutory Nature Conservation Bodies (SNCBs) as a means to measure potential impacts on harbour porpoise within the SAC (JNCC 2017d,e; 2020b). The EDR is an empirically derived generic distance within which deterrence, i.e. displacement, of harbour porpoise is predicted to occur. The EDR are based on published studies that have monitored the effects on harbour porpoise from various activities and reflects the overall loss of habitat if all animals vacate the area (e.g. Defra 2015). It is an area of displacement as opposed to disturbance, which may be greater.
- 6.2 The published precautionary EDR are presented in Table 3 (JNCC 2020b). Relevant to this assessment are the EDRs for seismic surveys and high resolution geophysical surveys. The JNCC have advised that due to the relatively small size of the airguns to be used during the surveys that the EDR to be used in this assessment should be 10 km (JNCC *Pers. comm.* 2020). A 5 km EDR has been used for Survey Area Two where a sparker sub-bottom profiler will be operated.

Table 3: Precautionary Effective Deterrent Ranges (EDR) (Source: JNCC 2020b).

Activity	Effective Deterrent Range (km)
Monopile	26
Unexploded Ordnance	26
Pin-pile ¹	15
Monopile with noise abatement	15
Conductor piling	15
Seismic survey	12
High Resolution Geophysical Surveys	5

¹ Pin-piles are 'smaller diameter piles that secure jacket structures' although there is no definition on what diameter a pin-pile should be in published guidance (JNCC 2020).

- 6.3 The SNCBs recognise that future data may require the suitability of the EDR to be reconsidered if it is found to be inappropriate (JNCC 2020).

7 CONSERVATION OBJECTIVES

- 7.1 Conservation Objectives constitute a necessary reference for identifying site-based conservation measures and for carrying out HRAs of the implications of plans or projects (JNCC and NE 2019). They outline the desired state for any European site, in terms of the features for which it has been designated. If these features are being managed in a way which maintains their nature conservation value, they are assessed as being in a 'favourable condition'. An adverse effect on the integrity of a site is likely to be one which prevents the site from making the same contribution to favourable conservation status for the relevant feature as it did at the time of its designation (English Nature 1997).
- 7.2 The purpose of an Appropriate Assessment is to determine whether a plan or project adversely affects a site's integrity. The critical consideration in relation to site integrity is whether the plan or project affecting a site, either individually or in-combination, affects the site's ability to achieve its conservation objectives and favourable conservation status.

Southern North Sea SAC

- 7.3 The Southern North Sea SAC was designated as a SAC in 2019. The site covers an area of 36,951 km² and is designated for harbour porpoise.
- 7.4 Harbour porpoise are also protected throughout European waters under the provisions of Annex IV and Article 12 of the Habitats Directive, which are outwith the scope of this assessment. Harbour porpoise in UK waters are considered part of a wider European population and the mobile nature of this species means that the concept of a 'site population' is not thought to be appropriate for this species. Site based conservation measures therefore aim to complement wider ranging measures that are in place for the harbour porpoise (JNCC and NE 2019).
- 7.5 The Conservation Objectives for harbour porpoise are designed to ensure that human activities do not, in the context of maintaining site integrity:
- kill, or injure harbour porpoise (directly or indirectly),
 - prevent their use of significant parts of the site (disturbance / displacement),
 - significantly damage relevant habitats, or
 - significantly reduce the availability of prey.



Southern North Sea SCI Conservation Objectives

To ensure that the integrity of the site is maintained and that it makes the best possible contribution to maintaining Favourable Conservation Status (FCS) for Harbour Porpoise in UK waters
In the context of natural change, this will be achieved by ensuring that:

1. Harbour porpoise is a viable component of the site;
2. There is no significant disturbance of the species; and
3. The condition of supporting habitats and processes, and the availability of prey is maintained..

Source: JNCC and NE 2019

- 7.6 Harbour porpoises are considered to be a 'viable component' of the site if they are able to survive and live successfully within it. The first Conservation Objective aims to minimise the risk from activities that cause unacceptable levels of impact on harbour porpoise using the site, specifically those that could impact on the Favourable Conservation Status of harbour porpoise (JNCC and NE 2016, 2019).
- 7.7 The '*integrity of the site*' is not defined in the Conservation Objectives. However, EU and UK Government guidance defines the integrity of a site as "*the coherence of the site's ecological structure and function, across its whole area, or the habitats, complex of habitats and/or populations of species for which the site is or will be classified*" (EC 2000, Defra 2012). Therefore, the integrity of the site applies to the whole of the site and it is the potential impacts across the whole of the site that are required to be appropriately assessed. Pressures that would affect site integrity include:
- killing or injuring harbour porpoise (directly or indirectly),
 - preventing their use of significant parts of the site (disturbance / displacement),
 - significantly damaging relevant habitats,
 - significantly reducing the availability of prey. (JNCC and NE 2019).
- 7.8 The second Conservation Objective states that there should be '*...no significant disturbance of the species*' and that '*Disturbance is considered significant if it leads to the exclusion of harbour porpoise from a significant portion of the site*' (JNCC and NE 2019).
- 7.9 '*Supporting habitats and processes*' relate to the seabed and water column along with the harbour porpoise prey.
- 7.10 JNCC advise that it is not appropriate to use the site population estimates in any assessments of effects of plans or projects (i.e. Habitats Regulation Assessments), as it is necessary to take into

- consideration population estimates at the Management Unit level to account for daily and seasonal movements of the animals (JNCC 2017d; JNCC and NE 2019).
- 7.11 There are no formal thresholds at which impacts on site integrity are considered to be adverse. However, a threshold of 1.7% of the relevant harbour porpoise population above which a population decline is inevitable has been agreed with Parties to the Agreement on the Conservation of Small Cetaceans of the Baltic and North Seas (ASCOBANS), with an intermediate precautionary objective of reducing the impact to less than 1% of the population (Defra 2003, ASCOBANS 2015). This threshold relates to impacts from fisheries by-catch on harbour porpoise where the impact on the harbour porpoise is permanent, i.e. up to 1.7% of the population may be caught as by-catch before a population decline is inevitable. An equivalent level of impact from disturbance, which is temporary and non-lethal, on a population will have a lower level of impact on the population compared to that from a fisheries by-catch.
- 7.12 The lack of agreed population thresholds either at the Management Unit level or site level, below which evidence demonstrates there would not be an adverse effect, does not prevent objective judgements to be made on site integrity.
- 7.13 Draft thresholds to assess and manage the effects of noise on site integrity have been proposed by the JNCC and NE (JNCC 2017d,e; JNCC and NE 2019, JNCC 2020). The proposed approach is not based on a population level impact but is instead based on a temporal and spatial level where a proportion of the area within the SAC may be affected over a period of time.
- 7.14 The JNCC and NE advice is that *'noise disturbance within the site should not exclude harbour porpoise from more than 20% of the site on any given day. Over a season, the advice is that an average loss of access to more than 10% of the SAC should be considered significant, recognising that within the SAC the abundance of harbour porpoise per unit habitat is generally higher than the equivalent sized habitat in the rest of the relevant Management Unit. Management of temporary habitat 'loss' to below defined area/time thresholds is therefore designed to ensure that it continues to contribute in the best possible way to the maintenance of the species at FCS.'* (JNCC 2020).
- 7.15 The potential extent of noise causing disturbance that would meet these proposed thresholds and therefore impact on the integrity of the site are presented in Table 4. The results indicate that should the impact occur wholly inside the SAC that, within the 'summer' area a sound source alone or in-combination causing disturbance for one day over an area of 7,390 km² would risk impacting site integrity. This is equivalent to a circular radius of noise out to 41.5 km. To exceed the threshold for the 'winter' area, noise in any one day should not extend over an area of more than 2,537 km²; equivalent to a circular radius of 28.4 km.
- 7.16 Over the course of a season the total extent of potential disturbance on average per day should, in the 'summer' area, not extend over an area of more than 3,695 km²; equivalent to a radius of



noise of 29.3 km and in the 'winter' area should not extend over an area of more than 1,269 km², equivalent to a radius of 20.1 km.

Table 4: Estimated extent sound levels capable of causing displacement disturbance occur in order to impact on site integrity.

Site	Area (km ²)	1 day threshold		Seasonal threshold	
		20% of area (km ²)	Distance to threshold (km)	10% of area (km ²)	Distance to threshold (km)
Southern North Sea SAC	36,951	7,390	48.5	3,695	34.3
'summer' area April - September	27,028	5,406	41.5	2,701	29.3
'winter' area October - March	12,696	2,539	28.4	1,270	20.1

The 'Distance to threshold' presumes sound propagation is circular in shape, i.e. the distance is the equivalent to a radius of circular noise.

- 7.17 Unlike the daily threshold, the area of the SAC that can be affected over the course of a season is an average over the season. The seasonal average is calculated by summing the proportion of the site impacted (for the relevant season) over the number of days the impact will occur and then averaging across the total number of days within that season, i.e. 183 days in the summer period and 182 days in the winter period. This provides a seasonal average spatial effect.
- 7.18 This assessment is based on both the potential impact on the North Sea Management Unit population using both the ASCOBANS thresholds and the proposed SNCB threshold approach.
- 7.19 In order to undertake any meaningful assessment using the threshold approach accurate information on the timing, duration and extent of activities being undertaken is required. Where this information is lacking or where speculative 'worst-case' scenarios are used there is little or no confidence that the results will bear any resemblance to the true extent of impact within the SAC on any single day or across the course of a season. The threshold approach proposed by the SNCBs has not been agreed with the competent authorities. However, the thresholds have been noted within the assessment as a high-level management tool to limit the spatial distribution of noise from offshore activities within a large offshore SAC, such as the Southern North Sea SAC.
- 7.20 The HRA has been carried out in light of best scientific knowledge with reference to the Conservation Objectives of the SAC and the potential impacts on the integrity of the site (EC 2010).

8 IN-COMBINATION IMPACTS

- 8.1 Under the Habitats Regulations, it is necessary to consider the in-combination effects of plans or projects on European Sites. These refer to effects, which may or may not interact with each other, but which could affect the same receptor or interest feature (i.e. a habitat or species for which a European site is designated).
- 8.2 The in-combination assessment includes plans or projects that are:
- Under construction,
 - Permitted application(s), but not yet implemented,
 - Submitted application(s), not yet determined,
 - Projects identified in the relevant Development Plan (and emerging Development Plans),
 - Sites identified in other policy documents, as development reasonably likely to come forward.

Renewable energy activity

- 8.3 A source of potentially significant in-combination underwater noise impact is from pile driving activity occurring during the construction of offshore renewable developments, particularly offshore wind farms.
- 8.4 There are 24 UK offshore wind farms that are either operating or applications have been submitted and that lie wholly within the Southern North Sea SAC or are within 26 km of the boundary. (This is identified by the JNCC as an area that harbour porpoises may be displaced from by noise arising from pile-driving activities (JNCC 2017d, JNCC 2020)). A further six wind farms are currently in pre-application phase. (Table 5).
- 8.5 During the period of the proposed survey the following wind farm related activities could be undertaken that could cause an in-combination impact:
- Dogger Bank A offshore wind farm could be installing turbine foundations and therefore carrying out pile-driving.
 - Dogger Bank B could commence pile-driving in August 2023 (Gov 2023). This is after the completion of the proposed Bunter Outcrop seismic survey and therefore not cause a daily in-combination impact but could cause an in-combination impact based on a seasonal threshold assessment.
- 8.6 All other wind farms are either operating, consented but not started offshore construction or have submitted applications and are awaiting determination and no other activities have been identified as having potential for causing an in-combination impact.



Table 5: Offshore wind farms located within 26 km of the Southern North Sea SAC.

Wind farm	Status
Round 1	
Scroby Sands	Operating
Round 2/2.5	
Dudgeon	Operating
Galloper	Operating
Greater Gabbard	Operating
Gunfleet Sands II	Operating
Humber Gateway	Operating
Thanet	Operating
Triton Knoll	Operating
Westermost Rough	Operating
Round 3	
Dogger Bank A	Offshore construction started
Dogger Bank B	Onshore construction started
Dogger Bank C	Onshore construction started
Sofia	Consented
East Anglia One	Operating
East Anglia One North	Consented
East Anglia Two	Consented
East Anglia Three	Consented
Hornsea Project One	Operating
Hornsea Project Two	Offshore construction started
Hornsea Project Three	Consented
Hornsea Project Four	Application submitted
Norfolk Vanguard	Consented
Norfolk Boreas	Consented
'Round 3+'	
Dogger Bank D	Pre-application
Extension Projects	
Dudgeon and Sheringham Shoal Extensions	Application submitted
Five Estuaries	Pre-application
North Falls	Pre-application
Round 4	
Dogger Bank South: West	Pre-application
Dogger Bank South: East	Pre-application
Outer Dowsing	Pre-application

Cable laying activity

- 8.7 The NeuConnect Project includes the installation, operation and maintenance of a 1400 MW electricity interconnector between the electricity networks of Great Britain (GB) and Germany. Two High-Voltage Direct Current submarine cables will be installed in a single cable bundle, which will also contain a fibre optic control and communication cable.

8.8 The proposed works include the use of a sub-bottom profiler and has therefore been identified in the Southern North Sea Noise Register (Gov 2023). The information to inform the HRA does not include any reference to noise impacts within the SAC from a sub-bottom profiler (NeuConnect 2021). Furthermore, the HRA undertaken requires within it a licence condition that the sub bottom profiler survey work will not be carried out in the Southern North Sea SAC during the wintering period between the months of 1 October to 31 March inclusive (MMO 2021). No such condition has been included for impacts in the summer period between April and September. There is no evidence within the HRA documentation that there will be any use of a sub-bottom profiler within the summer area of the Southern North Sea SAC during the summer period. Consequently, it is concluded that there will be no in-combination impact resulting from activities associated with the NeuConnect Project.

Aggregate extraction and dredging activity

- 8.9 Existing localised aggregate dredging occurs primarily in the southern half of the SAC, along the east coast. In 2019 there were 29 aggregate production areas and five Exploration and Option areas covering an area of 579.2 km². Five of the aggregate areas occur in the 'summer' area of SAC covering 77.7 km² and the rest occur in the 'winter' area of the SAC and cover an area 533.8 km², with some sites occurring in both the 'winter' and 'summer' areas.
- 8.10 Studies have indicated that harbour porpoise may be displaced by dredging operations within 600 m of the activities (Diederichs *et al.* 2010). Noise modelling previously undertaken for aggregate assessments have predicted significant levels of avoidance at ranges of 500 m from suction dredging (Parvin *et al* 2008 (referenced in Hanson Aggregates Marine Ltd 2013)).
- 8.11 On a precautionary assumption that there is a level of behavioural displacement out to 600 m, there is potential for an area of 1.13 km² to be affected at each active dredging location. There are currently three aggregate production areas in the 'summer' area and 26 in the 'winter' area. Although the level of dredging activity within each of the active licence areas is unknown, as a worst-case scenario, with dredging occurring within each dredging area, porpoise may be displaced from an area of 3.39 km² in the 'summer' area and 29.38 km² in the 'winter' area. Therefore, a very small proportion (0.01% of the summer area and 0.2% of the summer area) of the SAC may be impacted by noise arising from dredging activities.

Oil and gas activity

8.12 There is a long history of oil and gas activities within the boundaries of the Southern North Sea SAC. Since 1965, when the first well was spudded (first drilled), there has been extensive oil and gas development with a total of 117 installations installed within the SAC. The vast majority (94%) of all the installations within the boundary of SAC are located in the 'summer' area of the site (Figure 3) (OGA NDR 2020).

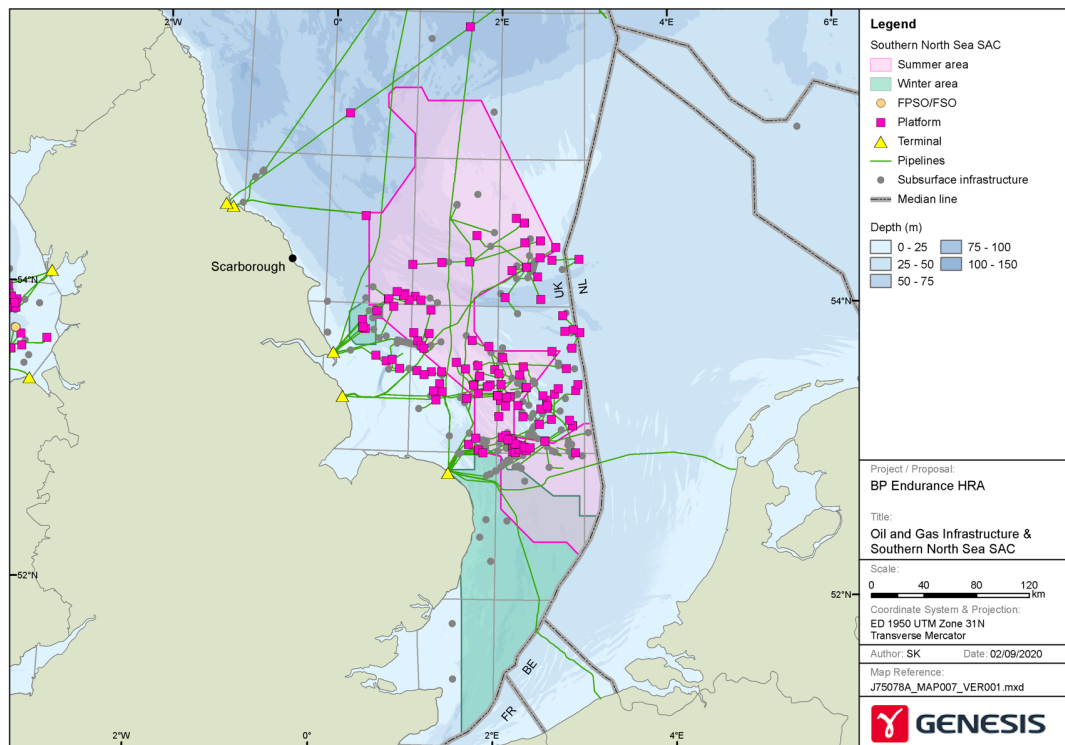


Figure 3: Existing oil and gas infrastructure within the Southern North Sea SAC.

- 8.13 Seismic surveys have regularly been undertaken within the SAC over the last 50 years, with a total of 23 2D or 3D seismic surveys carried out within the SAC over a ten year period up to 2017. The majority of surveys during this period took place in the northern half of the SAC, where the most recent oil and gas activity has occurred.
- 8.14 OPRED are aware of planned oil and gas related activities within the SAC during the period the proposed survey will be undertaken. These include:
- Crosgan drilling appraisal well,
 - Murdoch KM and Nw Bell ZX Survey,
 - Johnston site survey,
 - Q43 Lodestone West 2023- multi-client regional survey,
 - Hewett Field Bathymetric and Seismic Survey.

Crosgan appraisal well

- 8.15 One-Dyas submitted an application (GS/1499/0) to carry out a marine survey on 26 January 2023. The application is for the drilling of an appraisal well with the earliest start date of 1 February 2023 and latest end date 31 December 2023 (ONE-Dyas 2023a).

- 8.16 The Crosgan well is an appraisal well which will be drilled over a period of 75 days. The well is planned to be drilled in a maximum of five sections after the 30" conductor has been installed. Once the 30" section is drilled a 30" conductor will be pilled in place to a depth of run at ± 70 m (230 ft) measured depth and cemented in place. Piling of the conductor will be undertaken using a hammer and is expected to last up to eight hours (ONE-Dyas 2023b).
- 8.17 In addition to the above drilling activity, a Vertical Seismic Profile (VSP) survey VSP will be used to acquire data on the well, which will involve the use of a seismic array from the jack-up rig into the wellbore. The VSP operation is expected to take no more than 24 hours to complete and will involve a four-gun array. The total time of the VSP operations, including deployment of equipment, is one day. (ONE-Dyas 2023b).

NW Bell ZX and Murdoch KM Survey

- 8.18 Harbour Energy propose to conduct a geophysical site survey at NW Bell ZX and Murdoch KM in Blocks 49/22 and 49/23 (NW Bell) and Blocks 44/22 and 44/23 (Murdoch KM) (Harbour Energy 2023a). The NW Bell ZX lies within the Southern North Sea SAC and the Murdoch KM lies 5.9 km outwith the SAC. Consequently, only activities associated with the NW Bell ZX could impact on the Southern North Sea SAC.
- 8.19 The proposed survey activities will comprise of Sub-bottom Profiling, Multibeam Echosounder, Side Scan Sonar, Echo-sounder Survey and passive magnetometer. The purpose of the planned geophysical survey is to gather data on the seabed bathymetry and conduct debris clearance at NW Bell ZX and Murdoch KM (Harbour Energy 2023a).
- 8.20 The proposed activities were to be undertaken over a period of two days from 9 March 2023. However, licence allows for activities to be undertaken up to 31 May 2023. Consequently, there is potential for both daily and seasonal in-combination impacts from activities at NW Bell ZX.

Johnston Survey

- 8.21 Harbour Energy propose to conduct a site survey at the Johnston field located in Block 43/27 (Harbour Energy 2023b). The survey will be across two locations, Johnston E&A well area and Johnston J4 and J5 wells area, within Block 43/27.
- 8.22 The survey activities will comprise of a 2D Ultra High Resolution Seismic Survey, Sub-bottom Profiling, Multibeam Echo Sounder, Side Scan Sonar and Echo Sounder Survey. The purpose of the planned geophysical survey is to gather data on the seabed and environmental conditions of the Johnston field, and the mapping of shallow hazards (Harbour Energy 2023b).
- 8.23 The proposed activities were to be undertaken over a period of two days from 15 March 2023. However, licence allows for activities to be undertaken up to 31 May 2023. Consequently, there is potential for both daily and seasonal in-combination impacts.



Q43 Lodestone West 2023- multi-client regional survey

- 8.24 CGG have submitted an application to undertake a regional multi-client three-dimensional geological survey at the Lodestone survey area within the United Kingdom Continental Shelf (UKCS) Quadrants 42, 43 and 44 in the southern North Sea and overlaps the Southern North Sea SAC (CGG 2023).
- 8.25 The proposed survey operations will be undertaken using a single source (and recording) vessel and are planned to take place between June and December 2023. The survey is expected to take up to 114 days to complete during which airguns will be active/fired on 71 days.
- 8.26 There is no potential for an in-combination daily impact. There is potential for in-combination seasonal impact. However, no information is presented within the application suitable to undertake an in-combination assessment. There is limited noise modelling and no assessment using the SNCB threshold approach. Consequently, it is not possible to include the potential seasonal in-combination impacts from this survey within this assessment.

Hewett Field Bathymetric and Seismic Survey

- 8.27 [HOLD] Little information available (Awaiting Section 1 of the application)

Shipping

- 8.28 Impacts from shipping on harbour porpoise within the SAC have been identified as arising from shipping noise and collision impacts. Shipping noise is the predominant anthropogenic source of noise within the marine environment and is reported to have a negative effect on harbour porpoise within the SAC when vessel traffic exceeds 80 vessels per day (JNCC 2017c). Shipping has been on-going in the southern North Sea for many hundreds of years and the area is important for shipping, with relatively high numbers of vessels occurring within it. Based on vessel track lines, in 2015 a total of 269,018 vessels track lines were recorded transiting across the SAC; an average of 737 vessels per day (MMO 2017a).
- 8.29 The level of vessel activity across the 'summer' and 'winter' areas of the SAC differs. There is relatively widespread vessel activity in low densities across the 'summer' area, with 76% of the quadrants having less than seven vessels per week and 17% having less than one vessel per week. Compared with the 'winter' area of the SAC where 14% of the quadrants had, on average, less than seven vessels per week and only 1% had less than one vessel per week. In contrast 11% of the 'winter' area had more than 70 vessels per week compared with none in the 'summer' area. The areas with relatively higher levels of shipping (>24 vessels per day), occur over 4% of the 'winter' area. Therefore, the 'winter' area has relatively localised, higher density, areas of vessel traffic compared with the 'summer' area that has widespread but low density vessel traffic.

Fishing activity

- 8.30 Fishing occurs widely across the southern North Sea and has also been on-going in the area for many hundreds of years. The majority of current fish landings are obtained from areas adjacent to the SAC but there is widespread fishing activity in the southern half and north-eastern edge of the SAC and relatively moderate to high levels of fishing activity along the western edge of the central part of the SAC (MMO 2017b).
- 8.31 There is a high risk of an impact from bycatch associated with the fishing industry to harbour porpoise across the North Sea, i.e. there is good evidence of a significant impact. There is a medium risk of an impact from removal of prey (JNCC and NE 2019).
- 8.32 The bycatch of harbour porpoise in fishing gear is reported to be one of the most significant anthropogenic pressures impacting on the harbour porpoise population (JNCC and NE 2019). It is estimated that between 1,235 and 1,990 harbour porpoise die each year in the North Sea due to bycatch, predominantly in gill nets (ICES 2016, Mitchell *et al.* 2018, OSPAR 2017). This is approximately 0.6% of the North Sea Management Unit population.

In-combination conclusion

- 8.33 Following consideration of all known developments that could cause a likely significant effect, OPRED considers that there are plans or projects likely to cause an in-combination likely significant effect. The activities likely to cause an in-combination impact considered within this HRA are:
- Construction pile-driving at Dogger Bank A offshore wind farm,
 - Construction pile-driving at Dogger Bank B offshore wind farm,
 - Crosgan Appraisal Well,
 - Johnston site geophysical survey,
 - NW Bell ZX and Murdoch KM geophysical survey,
 - Q43 Lodestone West 2023- multi-client regional survey,
 - Hewett Field bathymetric and seismic survey.
- 8.34 On-going routine activities such as shipping, that could contribute to impacts on qualifying species, will also be being undertaken for the duration of the proposed surveys.



9 LIKELY SIGNIFICANT EFFECTS TEST

- 9.1 Regulation 5 of the 2001 Regulations requires the Competent Authority to consider whether a development will have a likely significant effect on a European site, either alone or in combination with other plans or projects. A likely significant effect is, in this context, any effect that may be reasonably predicted as a consequence of a plan or project that may affect the Conservation Objectives of the features for which the site was designated but excluding trivial or inconsequential effects. An Appropriate Assessment is required if a plan or project is likely to have a significant effect on a European site, either alone or in combination with other plans or projects. A judgement of likely significant effect in no way pre-supposes a judgement of adverse effect on site integrity.
- 9.2 There are no recognised criteria as to what can be considered to be trivial or inconsequential impacts. Where predicted impacts are relatively very small compared to either the population of the management unit or the area of the site or the duration of the impact, it was determined that the impact would not cause a likely significant effect.
- 9.3 This section addresses this first step of the HRA, for which OPRED has considered the potential impacts of the survey both alone and in combination with other plans and projects on each of the interest features of the relevant European sites to determine whether or not there will be a likely significant effect.

Harbour porpoise

- 9.4 Harbour porpoise are a qualifying species for the Southern North Sea SAC.
- 9.5 Within the Southern North Sea SAC harbour porpoise are known to occur throughout the site, with particular concentrations in the northern 'summer' area over which the proposed surveys overlap. Noise modelling undertaken indicates that there is potential for auditory injury to occur within 100 m of the sound source and disturbance or displacement effects to occur 6.7 km from the airguns and extend, during the course of the survey, over an area of 188 km² (Table 2).
- 9.6 Based on the predicted extent of potential impacts, it is concluded that there is potential for a likely significant effect on harbour porpoise from the proposed survey within or adjacent to the Southern North Sea SAC; the potential impacts on harbour porpoise are therefore considered further in the Appropriate Assessment.

Likely significant effects test - conclusions

- 9.7 Based on the information presented within the application relating to the proposed activities and the advice received during consultation, it is concluded that it is not possible to exclude a likely significant effect on the following designated sites and qualifying species:

- Southern North Sea SAC: Harbour porpoise,

9.8 For all other designated sites and associated qualifying habitats or species it is concluded that there will not be a likely significant effect from the proposed surveys either alone or in-combination with other plans or projects.



10 APPROPRIATE ASSESSMENT

- 10.1 An Appropriate Assessment is triggered when the competent authority, in this case the Secretary of State, determines that a plan or project is likely to have a significant effect on a European site. Guidance issued by the European Commission states that the purpose of an Appropriate Assessment is to determine whether adverse effects on the integrity of the site can be ruled out as a result of the plan or project, either alone or in-combination with other plans and projects, in view of the site's conservation objectives (EC 2000).
- 10.2 The following sections assess whether there will be an adverse effect on any of the European sites identified as having qualifying species for which no likely significant effect could not be ruled out from the project alone and in-combination.
- 10.3 A dual approach based on outputs from noise modelling and supported by the use of EDR has been used in order to determine whether an adverse effect on the integrity of the Southern North Sea SAC will occur.
- 10.4 The assessment of the potential impacts from the seismic survey is based on the results from noise modelling undertaken by the applicant. This approach takes into account project specific factors that can affect the level of sound produced and its propagation within the water column. From this it is possible to estimate the number of harbour porpoise that may be affected and the overall duration of the potential impacts. Based on the study published by ASCOBANS (2015) an annual reduction in the population of 1.7% could cause a population level decline (Para. 7.11). However, a similar level of impact from disturbance is predicted to not cause a population level of decline.
- 10.5 A second approach to the assessment has also been undertaken based on recommendations by the JNCC. This approach is based on the use of a generic EDR for all seismic survey activities irrespective of their location and airgun size. Following published evidence and advice received from the JNCC, for the purposes of this assessment a 12 km EDR has been used for the seismic survey (JNCC 2020b). The extent and duration of the survey is then measured against thresholds above which an adverse effect on site integrity could arise, as described in Section 6.

Southern North Sea SAC (Harbour porpoise)

Physical Injury

- 10.6 Noise modelling undertaken indicates that, based on the weighted SEL threshold, there is potential for sound levels to cause the onset of PTS to harbour porpoise out to 100 m (BP 2023b).
- 10.7 The peak harbour porpoise density across the SAC is estimated to be >3 per km² (Heinänen and Skov 2015). Based on this peak density and the worst-case scenario of PTS occurring out to 100 m of the survey, less than one harbour porpoise could be affected at the start of the seismic survey.

- 10.8 The North Sea Management Unit harbour porpoise population is 333,808 individuals and therefore the worst-case scenario of one harbour porpoise being impacted is <0.0001% of the Management Unit population.
- 10.9 The estimated area of potential impact from PTS is predominantly within 500 m of the airgun array and therefore within the radius which, if marine mammals are detected during a pre-shooting search, the commencement of the firing of the airguns must be delayed by a minimum of 20 minutes, as per the JNCC guidance (JNCC 2017c). Harbour porpoise will avoid the area of potential injury and move away from the seismic survey vessel as it approaches. Consequently, apart from when the operation of the airgun initially commences, there is a very low risk of physical injury to any harbour porpoise.
- 10.10 There is a very low risk of harbour porpoise being physically impacted by the proposed seismic survey. In the extremely unlikely event the onset of PTS does occur, it would only affect a very small proportion of the relevant population.

Disturbance

- 10.11 The largest distance any noise likely to cause disturbance is estimated to propagate out to is 6.7 km from the airguns, covering an area of 145 km² at any point. Assuming that disturbance occurs entirely within the SAC, then approximately 0.39% of the SAC as a whole and 0.54% of the 'summer' area could be affected by the proposed seismic survey at any one time.
- 10.12 Based on a peak site density of 3.0 ind./km² an estimated 435 harbour porpoise could be disturbed by the survey. This is equivalent to 0.13% of the North Sea Management Unit harbour porpoise population being disturbed.
- 10.13 A survey vessel will transit across an area and over the duration of a survey the total number of harbour porpoises disturbed will be greater. The applicant has confirmed that the survey vessel will be travelling at 4.0 (7.4 km/h) (BP 2023a). As the vessel undertakes a survey, disturbance in any area will last less than two hours in any one location. The disturbance effects are therefore transient and once the vessel has moved away from an area there is, in effect, no disturbance on those porpoises previously impacted.
- 10.14 The Applicant has estimated the total area that could be impacted for the duration of the survey. The total area potentially impacted is estimated to be 188 km² and therefore an estimated 564 porpoises may be impacted by the survey based on the highest densities recorded within the SAC. The disturbance of up 564 harbour porpoise is equivalent to 0.17% of the North Sea Management Unit population.
- 10.15 Studies undertaken in the Danish sector of the Central North Sea reported disturbance out to 12 km from a 3,570 cu. in. airgun, although the duration of the disturbance is not reported (Sarnocińska *et al.* 2020). Similar studies undertaken in the Moray Firth using a 470 cu in airgun with source levels estimated to be 242–253 dB re 1 µPa @ 1 m (peak to peak), reported a decrease



in the relative densities of harbour porpoises within 10 km of the airgun and an increase in densities at greater distances. However, porpoises continued to occur at sites within the impacted area during the seismic survey and there was a decline in the level of displacement over the ten day period that surveys were undertaken, indicating an increasing level of acclimation during the surveys. Once the surveys had ceased the number of detections returned to baseline levels within a day (Thompson *et al.* 2013, Pirotta *et al.* 2014). Therefore, any displacement effects caused by the proposed survey are predicted to be temporary, with porpoises returning to the area impacted within approximately 24 hrs.

Threshold Approach

10.16 The JNCC have advised that the assessment for harbour porpoise within the SAC should be undertaken by the threshold approach, whereby disturbance should not exceed 20% of the SAC 'summer' or 'winter' areas on any one day and on average 10% of an area over the course of a single season (see Section 7). To calculate the extent of noise within the SAC using the threshold approach the extent of disturbance from a moving sound source over the course of 24 hrs and the season is required.

Daily Threshold

10.17 In order to calculate whether the daily threshold of 20% of the seasonal area is impacted an accurate estimate of the level of activity within the SAC is required.

10.18 The survey will be undertaken over an area measuring approximately 6.5 km by 1.5 km and no greater than 10 km². On the basis that there will be extensive area of overlapping noise over a relatively small area compared with other seismic surveys. The applicant has calculated a worst-case scenario based on the maximum area that could be impacted should the first survey line commence on one boundary followed by the second survey line being undertaken on the other survey boundary furthest away, i.e. the maximum possible area is impacted. For a survey area this size it is reasonable to assume that this scenario could occur and is therefore a realistic worst-case scenario.

10.19 Based on a realistic worst-case scenario the maximum area that could be impacted over a period of 24 hrs is 651 km². This is equivalent to 2.4% of the 'summer' area.

10.20 The daily threshold will not be exceeded by the proposed surveys.

Seasonal Threshold

10.21 The survey is planned to be undertaken over a total duration of seven days (6 days for survey and 1 for testing). The proposed earliest start is early March 2023.

10.22 In order to assess the seasonal spatial overlap it is presumed that all seven days of survey will be undertaken during the summer period and that once started they will be undertaken for 24 hrs each day without a break.

10.23 Based on the maximum daily impact undertaken over a period of seven days, the seasonal threshold would be 0.23% of the SAC and therefore the seasonal threshold will not be exceeded (Table 6).

Table 6: Estimated extent of seasonal disturbance on harbour porpoise from proposed Endurance survey within the SAC.

SAC area	Area impacted per day (km ²)	Daily Threshold (%)	Estimated duration of impact (days) *	Seasonal Threshold (%)
<i>3D Survey</i>				
'summer'	651	2.4	7	0.09

10.24 There is potential for the prey species of harbour porpoise to be impacted by the proposed surveys. Studies on the impacts to fish from seismic surveys indicate that any disturbance to fish is temporary and localised (Peña *et al.* 2013; Slotte *et al.* 2004; Wardle *et al.* 2001). Should fish be displaced, harbour porpoise will either relocate to areas where prey species are present or remain until the seismic vessel has moved further away and the fish return to the area. Any potential impacts will be very localised and temporary and any effects will be inconsequential.

Conclusion

10.25 Results from noise modelling indicate that less than one harbour porpoise is at risk of physical injury from noise arising from the proposed survey. With the mitigation discussed in Section 12 there is a very low risk of any harbour porpoise being injured.

10.26 There is a risk of harbour porpoise being displaced or disturbed by the proposed survey. Noise modelling indicates that up to 435 harbour porpoise may be disturbed at any one time; this is 0.13% of the North Sea Management Unit population and therefore below the predicted level of disturbance that could cause a population level effect. The disturbance will be of short duration as the vessel transits through the Survey Area. Once the vessel has passed, any changes in behaviour due to disturbance will cease quickly after the vessel has moved away and any porpoises that may have been displaced are predicted to return to the area within 24 hrs.

10.27 The results from the threshold approach indicate that up to 2.4% of the 'summer' area may be impacted for a period of seven days and up to 0.09% of the seasonal threshold. The daily and seasonal thresholds are not exceeded.

10.28 The proposed surveys will not affect the supporting habitats and will have a temporary and localised impact on the supporting prey species, e.g. fish. Once the proposed survey has moved away or ceased there will be no effect on the distribution, abundance and population dynamics of the species.



10.29 Based on the best available information and supported by results from noise modelling and the draft threshold approach, OPRED is satisfied that the proposed survey alone will not have an adverse effect upon the integrity of the Southern North Sea SAC with respect to harbour porpoise.

11 IN-COMBINATION ASSESSMENT

- 11.1 There is potential for in-combination impacts to arise due to noise from other known or planned activities and the proposed seismic survey.
- 11.2 Projects identified as having potential to cause an in-combination impact are listed below. It is anticipated that the work will be undertaken in April. Projects listed in italics will not be commencing until after the expected completion date of the seismic survey.
- Dogger Bank A offshore wind farm - Pile-driving,
 - Corsgan Appraisal Well,
 - Johnston geophysical site survey,
 - NW Bell ZX geophysical site survey,
 - *Construction pile-driving at Dogger Bank B offshore wind farm,*
 - *Q43 Lodestone West 2023- multi-client regional survey,*
 - *Hewett Field bathymetric and seismic survey.*

Dogger Bank A pile-driving

- 11.3 Offshore construction at the Dogger Bank A Offshore wind farm commenced in 2022.
- 11.4 For the purposes of this assessment noise modelling undertaken by Dogger Bank Wind Farm for the Dogger Bank A and B offshore wind farms has been used. The modelling is based on the installation of 95 wind turbines at each of the wind farms. Each turbine will have 10 m diameter monopile driven into the seabed using a 4,000 kJ hammer (DBWF 2021).
- 11.5 The results from the modelling indicate that the onset of PTS could occur out to 1,400 m and encompass an area of 4 km². Levels of noise predicted to cause disturbance could occur out to 19 km and cover an area of 890 km² (DBWF 2021).
- 11.6 Based on the results from noise modelling and a peak density of 0.71 ind./km² recorded across the Dogger Bank Zone (Forewind 2014), an estimated three harbour porpoise are at risk of PTS from the pile-driving and 632 harbour porpoise may be disturbed or displaced.
- 11.7 Based on the threshold approach with an EDR of 26 km the results of the assessment indicate a maximum area of impact within the SAC from a single pile-driving event of 2,124 km², impacting 7.9% of the 'summer' area of the SAC. The total duration of activities will be 130 days, of which 36 days will be impacting within the SAC (Gov 2023). Consequently, the proposed pile-driving will contribute 1.5% of the seasonal threshold (Table 7).



Table 7: Estimated extent of daily and seasonal disturbance on harbour porpoise from proposed pile-driving at Dogger Bank A offshore wind farm within the SAC.

SAC area	Area of SAC impacted per day (km ²)	Daily Threshold (%)	Estimated duration of impact (days)	Seasonal Threshold (%)
<i>-Pile driving Dogger Bank A monopiles</i>				
'summer'	2,124	7.9	36	1.5

Crosgan Appraisal Well

- 11.8 Drilling of the proposed Crosgan Appraisal Well could commence in March or April 2023. Noise arising from conductor pile-driving and the use of Vertical Seismic Profiler (VSP) could cause disturbance (ONE-Dyas 2023a).
- 11.9 For the purposes of this assessment the EDR used for the conductor pile-driving is 15 km and the EDR used for assessing the impacts from the VSP is 5 km.

Conductor pile-driving

- 11.10 Conductor pile-driving will be undertaken over the course of a single day either during March or April. Based on a 15 km EDR an estimated area of 706.9 km² could be impacted. This is equivalent to 2.6% of the summer area. Based on one day of pile-driving the seasonal threshold would be 0.02% (Table 8).

Table 8: Estimated extent of seasonal disturbance on harbour porpoise from proposed conductor pile-driving within the Southern North Sea SAC.

SAC area	Area impacted per day (km ²)	Daily Threshold (%)	Estimated duration of impact (days) *	Seasonal Threshold (%)
'summer'	706.9	2.6	1	0.02

VSP Survey

- 11.11 Noise modelling undertaken for the VSP indicates that, based on the weighted SEL threshold, there is very limited potential for sound levels to cause the onset of PTS to harbour porpoise. With the potential area within which the noise levels could exceed the threshold for PTS being 0.36 km². On this basis it is predicted that there is very low risk of any harbour porpoise occurring within range at which levels of sound could cause PTS.
- 11.12 The largest distance any noise likely to cause disturbance is estimated to propagate out to is 0.5 km from the airguns, covering an area of 0.785 km² over a 24 hr period. The disturbance will occur entirely within the SAC, consequently, approximately 0.002% of the SAC as a whole and

0.003% of the 'summer' area could be affected by the proposed VSP survey over a period of 24 hrs (One-Dyas 2023a).

11.13 Based on a peak site density of 3.0 ind./km² an estimated 2.3 harbour porpoise could be disturbed by the proposed survey over 24 hrs. This is equivalent to <0.0001% of the North Sea Management Unit harbour porpoise population being disturbed. This estimate is based on the highest density of porpoises modelled within the SAC.

11.14 The VSP survey will be undertaken over the course of a single day and, based an EDR of 5 Km, impact an area of 78.54 km². This is equivalent to 0.29% of the summer area. Based on one day of VSP survey the seasonal threshold would be 0.002% (Table 9).

Table 9: Estimated extent of seasonal disturbance on harbour porpoise from proposed VSP survey within the SAC.

SAC area	Area impacted per day (km ²)	Daily Threshold (%)	Estimated duration of impact (days) *	Seasonal Threshold (%)
'summer'	78.54	0.29	2	0.002

Both the conductor pile-driving and VSP will be undertaken and therefore there is an additive impact from the proposed activities. Both activities will occur at the same well location but they cannot be undertaken simultaneously. Consequently the maximum area of impact during anyone day does not increase and therefore nor does the daily threshold. There is an increase in the seasonal threshold as the total duration of impact increases to four days. The combined seasonal threshold increases to a maximum of 0.022%.

NW Bell ZX and Murdoch KM Survey

11.15 Harbour Energy propose to conduct a geophysical site survey, including the use of a sub-bottom profiler at NW Bell ZX and Murdoch KM (Harbour Energy 2023a).

11.16 The proposed activities are to be undertaken over a period of two days between 9 March and 31 May 2023.

11.17 The results from the noise modelling undertaken by the applicant indicate that the onset of PTS could within 15 m from the sound source and encompass an area of 0.0007 km². Levels of noise predicted to cause disturbance could occur out to 590 m (based on a disturbance threshold of 160 dB) and cover an area of 1.1 km² (Harbour Energy 2023a).

11.18 Based on the results from noise modelling and a peak density of 3.0 ind./km², less than one harbour porpoise is estimated to be at risk of PTS from the geophysical survey and three harbour porpoise may be disturbed or displaced.

11.19 The applicant has not undertaken an assessment based on the SNCB threshold approach.



11.20 Using the recommended 5 km EDR for the use of geophysical surveys it is estimated that the maximum daily area impacted would be 80.3 km²¹. This would impact on 0.3% of the ‘summer’ area of the SAC. The total duration of activities within the SAC will be one day. Consequently the proposed geophysical survey will contribute 0.002% of the seasonal threshold (Table 10).

Table 10: Estimated extent of daily and seasonal disturbance on harbour porpoise from proposed NW Bell ZX geophysical site survey within the SAC.

SAC area	Area of SAC impacted per day (km ²)	Daily Threshold (%)	Estimated duration of impact (days)	Seasonal Threshold (%)
‘summer’	80.3	0.3	1	0.002

Johnston Geophysical Survey

11.21 Harbour Energy propose to conduct a site survey using geophysical equipment including a sub-bottom profiler at the Johnston field.

11.22 The proposed activities are to be undertaken over a period of two days between 15 March and 31 May 2023.

11.23 The results from the noise modelling undertaken by the applicant indicate that the onset of PTS could occur out to 73 m from the sound source and encompass an area of 0.017 km². Levels of noise predicted to cause disturbance could occur out to 470 m (based on a disturbance threshold of 160 dB) and cover an area of 0.7 km² (Harbour Energy 2023b).

11.24 Based on the results from noise modelling and a peak density of 3.0 ind./km², less than one harbour porpoise is estimated to be at risk of PTS from the geophysical survey and two harbour porpoise may be disturbed or displaced.

11.25 The applicant has not undertaken an assessment based on the SNCB threshold approach.

11.26 Using the recommended 5 km EDR for the use of geophysical surveys and the largest of the two survey areas is 0.9 km long. It is estimated that the maximum daily area impacted would be 118.8 km²². Consequently the proposed survey could impact on 0.4% of the SAC summer area over the course of one day. The total duration of activities will be two days. Consequently, the proposed geophysical survey will contribute 0.004% of the seasonal threshold (Table 11).

¹ Calculated based on a 5 km EDR and the total area to be surveyed at NW Bell being 1.8 km².

² Calculated based on a square area of impact of 10.9 km (5km + 5km + 0.9km).

Table 11: Estimated extent of daily and seasonal disturbance on harbour porpoise from proposed Johnston geophysical survey within the SAC.

SAC area	Area of SAC impacted per day (km ²)	Daily Threshold (%)	Estimated duration of impact (days)	Seasonal Threshold (%)
'summer'	119	0.4	2	0.004

NW Bell ZX and Murdoch KM Survey

- 11.27 Harbour Energy propose to conduct a geophysical site survey, including the use of a sub-bottom profiler at NW Bell ZX and Murdoch KM (Harbour Energy 2023b).
- 11.28 The proposed activities are to be undertaken over a period of two days between 9 March and 31 May 2023.
- 11.29 The results from the noise modelling undertaken by the applicant indicate that the onset of PTS could within 15 m from the sound source and encompass an area of 0.0007 km². Levels of noise predicted to cause disturbance could occur out to 590 m (based on a disturbance threshold of 160 dB) and cover an area of 1.1 km² (Harbour Energy 2023b).
- 11.30 Based on the results from noise modelling and a peak density of 3.0 ind./km², less than one harbour porpoise is estimated to be at risk of PTS from the geophysical survey and three harbour porpoise may be disturbed or displaced.
- 11.31 The applicant has not undertaken an assessment based on the SNCB threshold approach.
- 11.32 Using the recommended 5 km EDR for the use of geophysical surveys it is estimated that the maximum daily area impacted would be 80.3 km²¹. This would impact on impacting 0.3% of the 'summer' area of the SAC. The total duration of activities within the SAC will be one day. Consequently the proposed geophysical survey will contribute 0.002% of the seasonal threshold (Table 12).

Table 12: Estimated extent of daily and seasonal disturbance on harbour porpoise from proposed NW Bell ZX geophysical site survey within the SAC.

SAC area	Area of SAC impacted per day (km ²)	Daily Threshold (%)	Estimated duration of impact (days)	Seasonal Threshold (%)
'summer'	80.3	0.3	1	0.002

Construction pile-driving at Dogger Bank B offshore wind farm,

- 11.33 Offshore construction at the Dogger Bank B offshore wind farm could commenced in August 2023.

¹ Calculated based on a 5 km EDR and the total area to be surveyed at NW Bell being 1.8 km².



- 11.34 For the purposes of this assessment noise modelling undertaken by Dogger Bank Wind Farm for both the Dogger Bank A and B offshore wind farms has been used. The modelling is based on the installation of 95 wind turbines at each of the wind farms. Each turbine will have 10 m diameter monopile driven into the seabed using a 4,000 kJ hammer (DBWF 2021).
- 11.35 The results from the modelling indicate that the onset of PTS could occur out to 1,400 m and encompass an area of 4 km². Levels of noise predicted to cause disturbance could occur out to 19 km and cover an area of 890 km² (DBWF 2021).
- 11.36 Based on the results from noise modelling and a peak density of 0.71 ind./km² recorded across the Dogger Bank Zone (Forewind 2014), an estimated three harbour porpoise are at risk of PTS from the pile-driving and 632 harbour porpoise may be disturbed or displaced.
- 11.37 Based on the SNCB threshold approach with an EDR of 26 km the results of the assessment indicate a maximum area of impact within the SAC from a single pile-driving event of 2,124 km², impacting 7.9% of the 'summer' area of the SAC. The total duration of activities will be 130 days, of which 52 days will be impacting within the SAC (Gov 2023). Consequently the proposed pile-driving will contribute 2.2% of the seasonal threshold (Table 13).

Table 13: Estimated extent of daily and seasonal disturbance on harbour porpoise from proposed pile-driving at Dogger Bank B offshore wind farm within the SAC.

SAC area	Area of SAC impacted per day (km ²)	Daily Threshold (%)	Estimated duration of impact (days)	Seasonal Threshold (%)
<i>-Pile driving Dogger Bank B monopiles</i>				
'summer'	2,124	7.9	52	2.2

Q43 Lodestone West 2023- multi-client regional survey

- 11.38 The proposed survey will be undertaken between June and December 2023. The survey is expected to take up to 114 days to complete during which airguns will be active/fired on 71 days (CGG 2023).
- 11.39 The assessment concludes that the level of noise arising from the seismic survey is below the level at which the onset of PTS is predicted to occur in harbour porpoise.
- 11.40 The assessment does not use noise modelling to quantify the number of harbour porpoise that could be disturbed from the seismic survey. However, based on a deterrent radius of 12 km the assessment estimates a total of 402 harbour porpoise could be disturbed by the survey.
- 11.41 The assessment has not been undertaken using the threshold approach. The proportion of the summer area impacted daily or seasonally are not available.

Hewett Field bathymetric and seismic survey.

- 11.42 The proposed survey will be undertaken between 1 May and 30 September 2023. The survey is expected to take up to 90 days to complete (Gov. 2023).
- 11.43 Noise modelling indicates that the level of noise arising from the seismic survey at which the onset of PTS is predicted to occur will not be exceeded beyond 104 m (ENI 2023). Consequently, there is little or no risk of any auditory injury to harbour porpoise from the proposed seismic survey.
- 11.44 The modelling indicates that there is potential for a strong behavioural response within 1.5 km of the seismic survey and a mild behavioural reaction within 31 km (ENI 2023). The area impacted by the survey is not presented in the application. Based on a strong behavioural response occurring within 1.5 km radius of the airguns it is estimated that the area of disturbance could occur over an area of 7.0 km². Based on a maximum density of 3 ind./km², an estimated 21 harbour porpoise could be disturbed by the seismic survey.
- 11.45 Based on the SNCB threshold approach with an EDR of 12 km, the applicant has calculated that 1,237 km² could be impacted per day (ENI 2023), equating to 4.6% of the daily threshold. Based on the impact occurring over a period of 90 days the seasonal impact is estimated to be 2.3% (Table 14).

Table 14: Estimated extent of daily and seasonal disturbance on harbour porpoise from proposed pile-driving at Dogger Bank B offshore wind farm within the SAC.

SAC area	Area of SAC impacted per day (km ²)	Daily Threshold (%)	Estimated duration of impact (days)	Seasonal Threshold (%)
<i>-Pile driving Dogger Bank B monopiles</i>				
'summer'	1,237	4.6	90	2.3

In-combination scenarios

- 11.46 The in-combination assessment has been undertaken using outputs from both noise modelling and the threshold approach where available. Due to the number of current and planned activities being undertaken within or adjacent to the SAC and the level of uncertainty surrounding them, there are a number of potential in-combination scenarios. This section assesses the potential levels of in-combination impact that could arise.
- 11.47 The timelines for each of the activities identified as having the potential to cause an in-combination impact are presented in Figure 4.

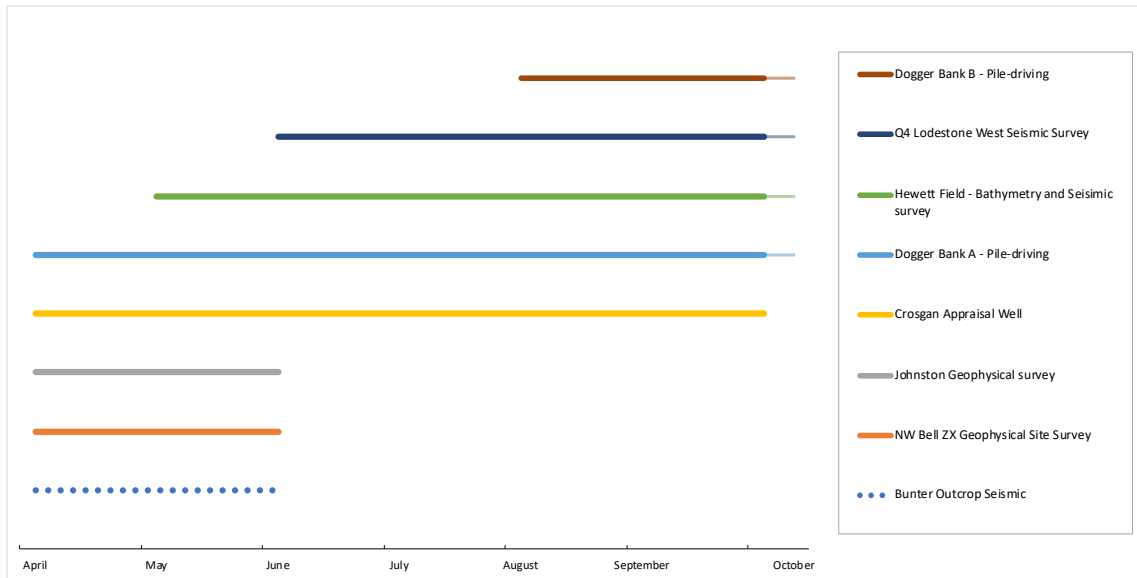


Figure 4: Timeline of known activities within the Southern North Sea SAC that could have an in-combination impact in summer 2023.

In-combination Impacts on Southern North Sea SAC: Harbour porpoise.

Noise modelling

11.48 This section assesses the potential in-combination impacts based on the results from noise modelling undertaken for each of the applications.

Physical Injury

11.49 Based on the results from noise modelling indicating a very low risk of any harbour porpoise occurring within the area where PTS could arise, it is concluded that there is no risk of an in-combination impact with respect to physical injury.

Disturbance

11.50 The total number of harbour porpoise predicted to be disturbed by the proposed seismic survey is 564 individuals.

11.51 At Dogger Bank A and Dogger Bank B an estimated 632 harbour could be disturbed or displaced by each project due to pile-driving . The Q43 Lodestone west seismic survey could also disturb up to 402 harbour porpoise based on a generic 12 km deterrent radius and stationary vessel.

11.52 Th proposed Hewett seismic survey is estimated to cause a strong behavioural response to 21 harbour porpoise.

11.53 The Corsgan Appraisal well could cause disturbance of up to 2.3 harbour porpoise from the VSP survey. No modelling has been undertaken for the conductor pile-driving.

11.54 Other planned activities within the SAC are predicted to have a more localised and smaller impact on harbour porpoise with five harbour porpoise impacted from the NW Bell ZX and Johnston geophysical surveys.

11.55 During the period the proposed Bunter Outcrop seismic survey will be undertaken in April or May an estimated 1,227 individuals, equivalent to 0.37% of the North Sea Management Unit Population could be disturbed. The potential impacts from displacement or disturbance will be temporary. If displaced, harbour porpoise will be able to relocate elsewhere and evidence from studies indicate that they will return to the area within 24 hrs of the noise ceasing.

In-combination threshold approach

11.56 There is always a level of uncertainty over the timing of activities that could impact on harbour porpoise within the Southern North Sea SAC. This uncertainty over the timings can cause overly precautionary assessments as activities that have been completed, or unlikely to occur are included in the assessment, contributing to the daily and seasonal totals. Even though in reality these scenarios are often very unlikely to arise.

11.57 For the purposes of this in-combination assessment all potential activities are predicted to occur, potentially on the one day. This gives rise to a highly precautionary and unrealistic in-combination total. However, there is a relatively high degree of certainty that the proposed seismic survey could occur on the same days as construction pile-driving is being undertaken at Dogger Bank A. Other activities that are recognised as potentially causing an in-combination impact, have lower probabilities of occurring on the same days but also make relatively small contributions to the daily or seasonal totals. Their inclusion in this assessment is precautionary and potential worst-case scenario has been assessed.

'Potential worst-case (April – May)'. This scenario is based on:

- Impacts from the proposed seismic survey at Bunter Outcrop.
- The maximum area of impact from pile-driving at the Dogger Bank A Offshore Wind Farm.
- Impacts from both conductor pile-driving and VSP surveys at Crosgan appraisal well.
- The Johnston geophysical survey is undertaken in April or May, as opposed to March.
- The NW Bell geophysical survey is undertaken in April or May, as opposed to March.
- Hewett bathymetric and seismic survey is undertaken in May.

11.58 These scenarios are potential worst-case in that, for them to arise, the maximum area of potential impact from all the projects must occur on the same day. The probability of this occurring is considered to be small.



11.59 Based on the potential worst-case (April – May) scenario the daily threshold is not exceeded, with the maximum impact predicted to arise during May 2023 (Table 15).

11.60 Based on the information available the potential worst-case scenario for the seasonal thresholds are not exceeded. It is recognised that future projects would increase the seasonal total. However, currently there is not enough information to undertake an assessment of these projects. They will be subject to their own assessments prior to any consenting decisions.

Table 15: Realistic worst-case in-combination daily threshold (%).

Activity	April	May	June	July	Aug	Sept
Bunter Outcrop survey	2.4	2.4	-	-	-	-
Crosgan conductor pile-driving	2.6	2.6	2.6	2.6	2.6	2.6
Crosgan VSP survey	0.3	0.3	0.3	0.3	0.3	0.3
Dogger Bank A - Pile-driving	7.9	7.9	7.9	7.9	7.9	7.9
Johnstone geophysical survey	0.4	0.4	-	-	-	-
NW Bell ZX geophysical survey	0.3	0.3	-	-	-	-
Hewett Field bathymetric and seismic	-	4.6	4.6	4.6	4.6	4.6
Q43 Lodestone West seismic	-	-	tbc	tbc	tbc	tbc
Dogger Bank B – Pile-driving	-	-	-	-	7.9	7.9
Total %	13.9	18.5	15.4+	15.4+	23.3+	23.3+

tbc = to be confirmed. No information available on daily threshold.

11.61 Under worst-case in-combination scenarios the seasonal threshold is not exceeded (Table 16). This does not include the Q43 Lodestone West seismic which would increase the seasonal total. Conversely, in the event that activities are delayed the in-combination seasonal threshold during the summer period of 2023 may be reduced.

Table 16: In-combination seasonal thresholds (%).

Activity	Summer seasonal threshold (%)
	Potential worst-case
Bunter Outcrop survey	0.09
Crosgan conductor pile-driving	0.03
Crosgan VSP survey	0.003
Dogger Bank A - Pile-driving	1.50
Johnstone geophysical survey	0.004
NW Bell ZX geophysical survey	0.002
Dogger Bank B - Pile-driving	2.23
Hewett Field bathymetric and seismic	2.3
Q43 Lodestone West seismic	unknown
Total %	6.16

In-combination assessment Southern North Sea SAC conclusions

- 11.62 Results from noise modelling indicate that up to 1,227 harbour porpoise could be disturbed by all proposed activities planned for April or May. This is 0.37% of the Management Unit population and therefore below the level of 1.7% at which a population level effect might be predicted to occur.
- 11.63 The results from the threshold approach indicate that the daily thresholds would not be exceeded even under a potential worst-case scenario. However, there is uncertainty relating to potential activities being undertaken from May onwards for which there is little or no information to inform this in-combination assessment.
- 11.64 The seasonal average threshold of 10% of the SAC across the season is not exceeded.
- 11.65 Based on the best available information and supported by results from noise modelling and the threshold approach, OPRED is satisfied that activities associated with the proposed Bunter Outcrop seismic survey, in-combination with other plans or projects will not have an adverse effect upon the integrity of the Southern North Sea SAC with respect to harbour porpoise.



12 MITIGATION

12.1 The following section presents a summary of the planned mitigation submitted by the Applicant that will reduce the risk of an adverse effect occurring.

12.2 BP have committed to following the JNCC guidelines for *minimising the risk of injury to marine mammals from geophysical surveys* (JNCC 2017c, BP 2023b). This will include:

- A minimum of 20 minutes soft-start undertaken every time the airguns are switched on.
- Use of JNCC accredited marine mammal observers (MMOs) to conduct watches for marine animals during daylight hours with good visibility. MMOs will monitor during the pre-source start search and soft start phase as a minimum.
- A proven PAM system to be utilised to conduct acoustic monitoring for marine mammals during periods of low visibility. PAM will be undertaken during the pre-source start search and soft start phase during poor visibility periods as a minimum.
- Observations will be undertaken for at least 30 minutes prior to the soft-start and there will be a minimum of a 20 minute delay from the time of the last marine mammal detection within the 500 m mitigation zone and the commencement of the soft-start.
- If line changes are anticipated to be longer than 40 minutes in duration, the airgun array will be switched off at the end of the survey line. A full pre-source start search and soft start will be conducted prior to the start of the next survey line. For line turns expected to be less than 40 minutes, the shot point interval will be increased (not exceeding 5 minutes) and decreased in uniform stages during the final 10 minutes of the line turn.

13 CONCLUSIONS

- 13.1 The Secretary of State has carefully considered all of the information available in order to undertake a Habitats Regulations Assessment. He considers the proposed BP Bunter Outcrop survey to have the potential to cause a Likely Significant Effect alone and in-combination with other plans or projects on the qualifying species of the Southern North Sea SAC.
- 13.2 The Secretary of State has undertaken an Appropriate Assessment in respect of the site's Conservation Objectives to determine whether the project, either alone or in-combination with other plans or projects, will result in an adverse effect on integrity.
- 13.3 The Secretary of State has undertaken a robust assessment using all of the information available to him.
- 13.4 Having considered all of the information available to him the Secretary of State has concluded that the proposed BP Endurance surveys will not have an adverse effect on the integrity of any European designated site either alone or in-combination with other plans or projects.

Author: Philip Bloor

Date: 17 March 2022



14 REFERENCES

- ASCOBANS (2015). *Recommendations of ASCOBANS on the Requirements of Legislation to Address Monitoring and Mitigation of Small Cetacean Bycatch*. October 2015.
- BP (2023a). Application GS/1500/0 (Version 1) Application to carry out a Marine Survey. 31 January 2023.
- BP (2023b). *Bunter Outcrop 3DHR Seismic Survey*. Northern Endurance Partnership.
- CGG (2023). *Environmental Assessment Justification and EPS Risk Assessment for Lodestone Seismic Survey*. Fugro.
- Clark, N. (2005). *The Spatial and Temporal Distribution of the Harbour Porpoise (P. phocoena) in the Southern Outer Moray Firth, NE Scotland*. Unpublished Master of Science Thesis. University of Bangor.
- DBWF (2021). *Dogger Bank A & B Non-Material Change application for increase in pin-pile and monopile hammer energy: Environmental report. LF500013-CST-RHD-REP-0002 / LF600013-CST-RHD-REP-0002*. Dogger Bank Wind Farm December 2021.
- Defra (2003). UK small cetacean bycatch response strategy. Department for Environment, Food and Rural Affairs. March 2003
- Defra (2012). The Habitats and Wild Birds Directives in England and its seas. Core guidance for developers, regulators & land/marine managers. December 2012.
- Defra (2015). *An analysis of potential broad-scale impacts on harbour porpoise from proposed pile driving activities in the North Sea*. Report of an expert group convened under the Habitats and Wild Birds Directives – Marine Evidence Group.
- Diederichs, A., Brandt, M., and Nehls, G. (2010). Does sand extraction near Sylt affect harbour porpoises? *Wadden Sea Ecosystem*, 26:199–203.
- DeRuiter, S.L. (2008). *Echolocation-based foraging by harbor porpoises and sperm whales, including effects of noise and acoustic propagation*. PhD Thesis. Massachusetts Institute of Technology and the Woods Hole Oceanographic Institution. September 2008.
- EAOWL (2015). *East Anglia Three offshore wind farm. Environmental Statement*. Scottish Power Renewables, Vattenfall.
- EC (2000). *Managing Natura 2000 sites: The provisions of Article 6 of the 'Habitats' Directive 92/43/CEE*. Luxembourg: Office for Official Publications of the European Communities, 2000 ISBN 92-828-9048-1.
- EC (2010). *Wind Energy Developments and Natura 2000 sites. Guidance Document. European Commission 2010*.
- English Nature (1997). *Habitats Regulations Guidance Note, HRGN 1*.
- ENI (2023). *Hewett Survey. Environmental Assessment Justification Report. P2574_R6000_Rev0 | 21 February 2023*.
- Evans, P.G.H. and Teilmann, J. (editors). (2009). Report of ASCOBANS/HELCOM Small Cetacean Population Structure Workshop. ASCOBANS/UNEP Secretariat, Bonn, Germany. 140pp.
- Everley, K.A., Radford, A.N., Simpson, S.D. (2016). Pile-Driving Noise Impairs Antipredator Behavior of the European Sea Bass *Decentrarchus labrax*. In: Popper A.N., Hawkins, A.D. (eds). *The effects of noise on aquatic life, II*. Springer Science Business Media, New York. pp. 273 – 279.
- Forewind (2013). *Dogger Bank: Creyke Beck offshore wind farm Environmental Statement*. Forewind.
- Forewind (2014). *Dogger Bank: Teesside A & B offshore wind farm Environmental Statement*. Forewind



- Gilles, A., Peschko, V., Scheidat, M. and Siebert, U. (2012). *Survey for small cetaceans over the Dogger Bank and adjacent areas in summer 2011*. 19th ASCOBANS Advisory Committee Meeting, 20-22 March 2012. AC19/Doc.5-08 (P).
- Greenstreet, S., Armstrong, E., Mosegaard, H., Jensen, H., Gibb, I., Fraser, H., Scott, B., Holland, G. and Sharples, J. (2006). Variation in the abundance of sandeels *Ammodytes marinus* off southeast Scotland: an evaluation of area-closure fisheries management and stock abundance assessment methods. *ICES Journal of Marine Science* 63: 1530-1550.
- Hammond, P. S. (2006). *Small Cetaceans in the European Atlantic and North Sea (SCANS II)*. LIFE Project No. 04NAT/GB/000245.
- Hammond, P.S., Benke, H., Borchers D.L., Buckland S.T., Collet A., Hiede-Jørgensen, M.P., Heimlich-Boran, S., Hiby, A.R., Leopold, M.F. and Øien, N. (1995). *Distribution and abundance of the harbour porpoise and other small cetaceans in the North Sea and adjacent waters*-Final report. Life 92-2/UK/027.
- Hammond, P.S., Macleod, K., Berggren, P., Borchers, D.L., Burt, M.L., Cañadas, A., Desportes, G., Donovan, G.P., Gilles, A., Gillespie, D., Gordon, J., Hiby, L., Kuklik, I., Leaper, R., Lehnert, K., Leopold, M., Lovell, P., Øien, N., Paxton, C.G.M., Ridoux, V., Rogan, E., Samarra, F., Scheidat, M., Sequeira, M., Siebert, U., Skov, H., Swift, R., Tasker, M.L., Teilmann, J., Van Canneyt, O. & Vázquez, J.A. (2013). Cetacean abundance and distribution in European Atlantic shelf waters to inform conservation and management. *Biological Conservation* 164: 107-122.
- Hammond, P.S., Lacey, C., Gilles, A., Viquerat, S., Börjesson, P., Herr, H., Macleod, K., Ridoux, V., Santos, M.B., Scheidat, M., Teilmann, J., Vingada, J. and Øien, N. (2017). *Estimates of cetacean abundance in European Atlantic waters in summer 2016 from the SCANS-III aerial and shipboard surveys*. University of St Andrews.
- Hanson Aggregates Marine Ltd. (2013). Licence Renewal Environmental Statement for Area 401/2. Volume 1: Environmental Statement. July 2013.
- Harbour Energy (2023a). *NW Bell ZX & Murdoch KM Survey Permit Application (SA/1699) Environmental Assessment Justification*. Harbour Energy.
- Harbour Energy (2023b). *Johnston Survey Permit Application (SA/1698) Environmental Assessment Justification*. Harbour Energy.
- Hassel, A., Knutsen, T., Dalen, J., Skaar, K., Løkkeborg, S., Østensen, Ø., Fonn, M. and Haugland, E.K. (2004). Influence of seismic shooting on the lesser sandeel (*Ammodytes marinus*). *ICES Journal of Marine Science* 61 (7), pp.1165-1173.
- Hawkins, A.D., Roberts, L., and Cheesman, S. (2014). Responses of free-living coastal pelagic fish to impulsive sounds. *Journal of the Acoustical Society of America* 135: 3101 - 3116. PMID: 24926505.
- Heath, M.R., Rasmussen, J., Bailey, M.C., Dunn, J., Fraser, J., Gallego, A., Hay, S.J., Inglis, M. and Robinson, S. (2011). Larval mortality rates and population dynamics of Lesser Sandeel (*Ammodytes marinus*) in the northwestern North Sea. *Journal of Marine Systems* 93, pp. 47- 57.
- Heinänen, S. and Skov, H. (2015). *The identification of discrete and persistent areas of relatively high harbour porpoise density in the wider UK marine area*. JNCC Report No.544 JNCC, Peterborough.
- Hermannsen, L., Tougaard, J., Beedholm, K., Nabe-Nielsen, J. and Madsen, P.T. (2015). Characteristics and Propagation of Airgun Pulses in Shallow Water with Implications for Effects on Small Marine Mammals. *PLoS ONE* 10(7): e0133436. doi:10.1371/journal.pone.0133436.
- Holland, G.J., Greenstreet, S.P.R., Gibb, I.M., Fraser, H.M. and Robertson, M.R. (2005). Identifying sandeel *Ammodytes marinus* sediment habitat preferences in the marine environment. *Mar. Ecol. Prog. Ser.* 303, 269– 282.
- IAMMWG (2015). *Management Units for cetaceans in UK waters (January 2015)*. JNCC Report No. 547, JNCC, Peterborough.



- IAMMWG, Camphuysen, C.J. and Siemensma, M.L. (2015). *A Conservation Literature Review for the Harbour Porpoise (Phocoena phocoena)*. JNCC Report No. 566, Peterborough. 96pp.
- ICES (2016). Working Group on Bycatch of Protected Species (WGBYC), 1–5 February 2016, ICES HQ, Copenhagen, Denmark. ICES CM 2016/ACOM:27. 82 pp.
- JNCC (2017a). *Species abbreviations and Management Units (MU) abundance values, in "Instructions.doc"*. Available from: <http://jncc.defra.gov.uk/page-7201>.
- JNCC (2017b). SAC Selection Assessment: Southern North Sea. January 2017. Joint Nature Conservation Committee, UK. Available from: <http://jncc.defra.gov.uk/page-7243>.
- JNCC (2017c). *JNCC guidelines for minimising the risk of injury to marine mammals from geophysical surveys*. Joint Nature Conservation Committee, Aberdeen. April 2017.
- JNCC (2017d). *A potential approach to assessing the significance of disturbance against conservation objectives of the harbour porpoise cSACs. Version 3.0*. Discussion document 14/02/2017. Workshop Noise management in harbour porpoise cSACs. The Dome Room, New Register House, 3 West Register Street, Edinburgh, Scotland EH1 3YT. 27th February 2017.
- JNCC (2017e). *Noise assessment and management in harbour porpoise SACs. Briefing note: Use of thresholds to assess and manage the effects of noise on site integrity*. Workshop Noise management in harbour porpoise cSACs. The Dome Room, New Register House, 3 West Register Street, Edinburgh, Scotland EH1 3YT. 27th February 2017.
- JNCC (2019a). *Southern North Sea MPA*. <http://jncc.defra.gov.uk/page-7243>.
- JNCC (2019b). *Natura 2000 – Standard data form UK0030395. Southern North Sea*. Joint Nature Conservation Committee 26 March 2019.
- JNCC (2020). *Guidance for assessing the significance of noise disturbance against Conservation Objectives of harbour porpoise SACs (England, Wales & Northern Ireland)*. JNCC Report No. 654,
- JNCC and NE (2016). *Harbour Porpoise (Phocoena phocoena) possible Special Area of Conservation: Southern North Sea. Draft Conservation Objectives and Advice on Activities*. January 2016. Joint Nature Conservation Committee and Natural England.
- JNCC and NE (2019). *Harbour Porpoise (Phocoena phocoena) Special Area of Conservation: Southern North Sea Conservation Objectives and Advice on Operations*. March 2019. Joint Nature Conservation Committee and Natural England.
- JNCC, NE and DAERA (2020). *Guidance for assessing the significance of noise disturbance against Conservation Objectives of harbour porpoise SACs. (England, Wales & Northern Ireland)*. Final Draft 30 January 2020.
- Judd, A., Warr, K. and Pacitto, S. (2011). *Fisheries Sensitivity Maps in British Waters – Guidance for Pile-driving*. Cefas contract report <ME5403 Mod13>.
- Kastelein, R.A., Hardeman, J. and Boer, H. (1997). *Food consumption and body weight of harbour porpoises (Phocoena phocoena)*. In: *The biology of the harbour porpoise (1997)*. Eds. Read, A.J., Wiepkema, P.R. and Nachtigall, P.E. pp.217-233. DeSpil Publishers, Woerden, The Netherlands, ISBN90-72743-07-5.
- Kastelein, R. A., Gransier, R., Hoek, L. and Olthuis, J. (2012). Temporary threshold shifts and recovery in a harbor porpoise (*Phocoena phocoena*) after octave-band noise at 4 kHz. *Journal of the Acoustical Society of America*. 132(5): 3525–3537.
- Kastelein, R.A., Van de Voorde, S. and Jennings, N. (2018). Swimming Speed of a Harbor Porpoise (*Phocoena phocoena*) During Playbacks of Offshore Pile Driving Sounds. *Aquatic Mammals* 2018, 44(1), 92-99, DOI 10.1578/AM.44.1.2018.92.



-
- Learmonth, J.A, Murphy, S., Luque, P.L., Reid, R.J., Patterson, I.A.P., Brownlow, A., Ross, H.M., Barley, J.P., Santos, M.B., Pierce, G.J. (2014). Life history of harbour porpoises (*Phocoena phocoena*) in Scottish (UK) waters. *Marine Mammal Science* 30: 1427-1455.
- Lockyer C. (2003). Harbour porpoises (*Phocoena phocoena*) in the North Atlantic: biological parameters. *NAMMCO Scientific Publications*, 5, 71–89.
- Miller, L. A., and Wahlberg, M. (2013). Echolocation by the harbour porpoise: life in coastal waters. *Frontiers in Physiology*, 4, 52. <http://doi.org/10.3389/fphys.2013.00052>.
- Mitchell, I., Macleod, K. and Pinn, E. (2018). Harbour Porpoise bycatch. UK Marine Online Assessment Tool, available at: <https://moat.cefas.co.uk/biodiversity-food-webs-and-marine-protected-areas/cetaceans/harbour-porpoise-bycatch/>.
- MMO (2015). *Modelled mapping of continuous underwater noise generated by activities*. A report produced for the Marine Management Organisation, pp50. MMO Project No. 1097. ISBN 978-1-909452-87-9.
- MMO (2017a). *Anonymised AIS derived track lines 2015*. <https://data.gov.uk/dataset/anonymised-ais-derived-track-lines-2015>. Marine Management Organisation.
- MMO 2017b. <https://data.gov.uk/dataset/4bd80f1a-4ead-44c5-b3fa-975da1cb4d7d/fishing-activity-for-uk-vessels-15m-and-over-2016>.
- MMO (2021). Habitats Regulations Assessment. NeuConnect: GB Offshore Scheme. MLA/2019/00488.
- Mueller-Blenkle, C., McGregor, P. K., Gill, A. B., Andersson, M. H., Metcalfe, J., Bendall, V., Sigra, P., Wood, D. T. and Thomsen, F. (2010). *Effects of Pile-driving Noise on the Behaviour of Marine Fish*. COWRIE Ref: Fish 06-08, Technical Report.
- NeuConnect (2021) *NeuConnect: Great Britain to Germany Interconnector GB Offshore Scheme Appendix 12-1. Habitat Regulations Assessment Report*. NeuConnect Britain Limited October 2021.
- OGA NDR (Oil and Gas Authority National Data Repository). <https://ndr.ogauthority.co.uk/> (accessed August 2020).
- OGP and IAGC (2004). *Seismic surveys and marine mammals*. Joint OGP/IAGC position paper. Houston & London, 12pp.
- One-Dyas (2023a). Application GS/1499/0 (Version 1) Application to carry out a Marine Survey. One-Dyas 26 January 2023.
- ONE-Dyas (2023b). Environmental Assessment Justification DRA/975. ONE-Dyas UK.
- OSPAR (2009) *Overview of the impacts of anthropogenic underwater sound in the marine environment*. OSPAR Convention for the Protection of the Marine Environment of the North-East Atlantic (www.ospar.org).
- OSPAR (2017). *Intermediate Assessment 2017: Harbour porpoise bycatch*. <https://oap.ospar.org/en/ospar-assessments/intermediate-assessment-2017/biodiversity-status/marine-mammals/harbour-porpoise-bycatch/>.
- Otani S., Naito Y., Kawamura A., Kawasaki M., Nishiwaki S., and Kato A. (1998) Diving behavior and performance of harbor porpoises, *Phocoena phocoena*, in Funka Bay, Hokkaido, Japan. *Marine Mammal Science*, 14, 209–220.
- Otani S. Naito Y., Kato A. and Kawamura A. (2000). Diving behaviour and swimming speed of a free ranging harbor porpoise, *Phocoena phocoena*. *Marine Mammal Science*, 16, 811– 814.
- Parvin, S.J, Nedwell, J.R. and Harland. E. (2007). *Lethal and physical injury of marine mammals and requirements for Passive Acoustic Monitoring*. Subacoustech Report.



- Parvin, S.J., Nedwell, J.R., Kynoch, J, Lovell, J., and Brooker, A.G. (2008). *Assessment of underwater noise from dredging operations on the Hastings shingle bank*. Report No. Subacoustech 758R0137. Subacoustech Ltd, Bishops Waltham, 81p.
- Peña, H., Handegard, N.O. and Ona, E. (2013). Feeding herring schools do not react to seismic air gun surveys. *ICES Journal of Marine Science*.
- Pirotta, E., Brookes, K.L., Graham, I.M. and Thompson, P.M. (2014). Variation in harbour porpoise activity in response to seismic survey noise. *Biological Letters*. 10: 20131090. <http://dx.doi.org/10.1098/rsbl.2013.1090>.
- Popper, A.N. (2003). Effects of anthropogenic sounds on fishes. *Fisheries* 28(10):24-31.
- Popper, A. N. Hawkins, A. D., Fay, R. F., Mann, D. A., Bartol, S., Carlson, T. J., Coombs, S., Ellison, W. T., Gentry, R. L., Halvorsen, M. B., Løkkeborg, S., Rogers, P. H., Southall, B. L., Zeddies, D. G., and Tavolga, W. N. (2014). *Sound Exposure Guidelines for Fishes and Sea Turtles: A Technical Report* prepared by ANSI-Accredited Standards Committee S3/SC1 and registered with ANSI. ASA S3/SC1.4 TR-2014.
- Richardson, W.J., Greene, C.R., Malme, C.I. and Thomson D.H. (1995). *Marine Mammals and Noise*. Academic Press, San Diego, 576pp.
- Santos, M.B. and Pierce, G.J. (2003). The diet of harbor porpoise (*P. phocoena*) in the Northeast Atlantic. *Oceanography and Marine Biology: an Annual Review* 2003, 41, 355–390.
- Sarnocińska, J., Teilmann, J, Balle, J.D., van Beest, F.M., Delefosse, M. and Tougaard, J. (2020) Harbor Porpoise (*Phocoena phocoena*) Reaction to a 3D Seismic Airgun Survey in the North Sea. *Front. Mar. Sci.* 6:824. doi: 10.3389/fmars.2019.00824.
- Slotte, A., Hansen, K., Dalen, J. and One, E. (2004). Acoustic mapping of pelagic fish distribution and abundance in relation to a seismic shooting area off the Norwegian west coast. *Fish. Res.* 67: 143-150.
- SMart Wind (2015). *Hornsea offshore wind farm. Project two environmental statement*.
- SMart Wind (2017). *Hornsea Project Three Offshore Wind Farm. Preliminary Environmental Information*.
- Southall, B., Bowles, A., Ellison, W., Finneran, J., Gentry, R., Greene Jr., C., Kastak, D., Ketten, D., Miller, J., Nachtigall, P., Richardson, W., Thomas, J. and Tyack, P. (2007). Marine Mammal Noise Exposure Criteria: Initial Scientific recommendations. *Aquatic Mammals*. 33(4), 411-521.
- Southall, B.L., Finneran, J.J., Reichmuth, C., Nachtigall, P.E., Ketten, D.R., Bowles, A.E., Ellison, W.T., Nowacek, D.P. and Tyack, P.L. (2019). Marine mammal noise exposure criteria: Updated Scientific recommendations for residual hearing effects. *Aquatic Mammals* 2019, 45(2), 125-232, DOI 10.1578/AM.45.2.2019.125.
- Sveegaard, I. (2011). *Spatial and temporal distribution of harbour porpoises in relation to their prey*. Unpublished PhD Thesis, Aarhus University.
- Teilmann, J., Larsen, F. and Desportes, G. (2007). Time allocation and diving behaviour of harbour porpoises (*Phocoena phocoena*) in Danish and adjacent waters. *J. Cetacean Res. Manage.* 9(3):201–210, 2007.
- Thompson, P.M., Brookes, K.L., Graham, I.M., Barton, T.R., Needham, K., Bradbury, G. and Merchant, N.D. (2013). Short-term disturbance by a commercial two-dimensional seismic survey does not lead to long-term displacement of harbour porpoises. *Proc R Soc Lond B Biol SAC* 2013, 280:20132001.
- Thomsen, F., Lüdemann, K., Kafemann, R. and Piper, W. (2006). *Effects of offshore wind farm noise on marine mammals and fish*. Cowrie Report.
- TKOWFL (2011). *Triton Knoll Offshore Wind Farm Environmental Statement*. RWE npower renewables.



- Van der Kooij, J., Scott, B.E. and Mackinson S. (2008). The effects of environmental factors on daytime sandeel distribution and abundance on the Dogger Bank. *Journal of Sea Research* 60: 201–209.
- Villadsgaard A., Wahlberg M., Tougaard J. (2007). Echolocation signals of wild harbour porpoises, *Phocoena phocoena* J. *Exp. Biol.* 210 56–64.
- Wardle, C.S., Carter, T.J., Urquart, G.G., Johnstone, A.D.F., Ziolkowski, A.M., Hampson, G. and Mackie, D. (2001). Effects of seismic airguns on marine fish. *Continental shelf research* 21: 1005 – 1027.
- Weir, C.R., Stokin, K.A., and Pierce, G.J. (2007). *Spatial and Temporal Trends in the Distribution of Harbour Porpoises, White-Beaked Dolphins and Minke Whales Off Aberdeenshire (UK), North-Western North Sea*. J. Mar. Biol. Assoc. UK 87: 327-338.
- Whaley, A.R. (2004). *The distribution and relative abundance of the harbour porpoise (P. phocoena L.) in the southern outer Moray Firth, NE Scotland*. Unpublished bachelor of Science thesis. School of Geography, Birkbeck College.
- Wisniewska, D.M., Johnson, M., Teilmann, J., Rojano-Doñate, L., Shearer, J., Sveegaard, S., Miller, L.A., Siebert, U. and Madsen, P.T. (2016). Ultra-high foraging rates of harbor porpoises make them vulnerable to anthropogenic disturbance. *Current Biology* 26: 1441–1446, Elsevier Ltd.
- Wisniewska, D.M., Johnson, M., Teilmann, J., Siebert, U., Galatius, A., Dietz, R. and Madsen, P.T. (2018). High rates of vessel noise disrupt foraging in wild harbour porpoises (*Phocena phocoena*). *Proc. R. Soc. B.* 285: 20172314. <http://dx.doi.org/10.1098/rspb.2017.2314>.