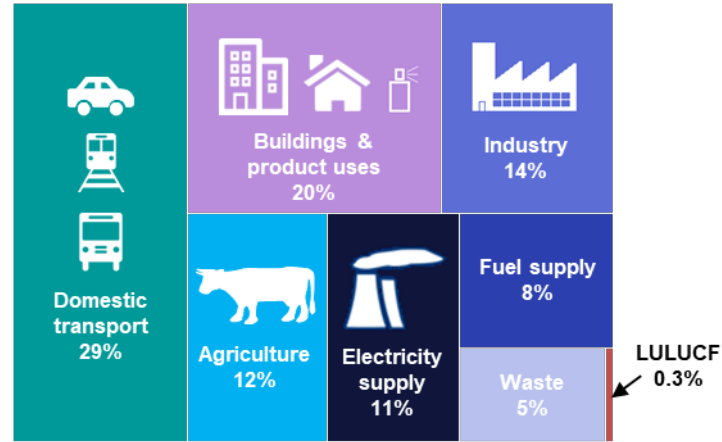
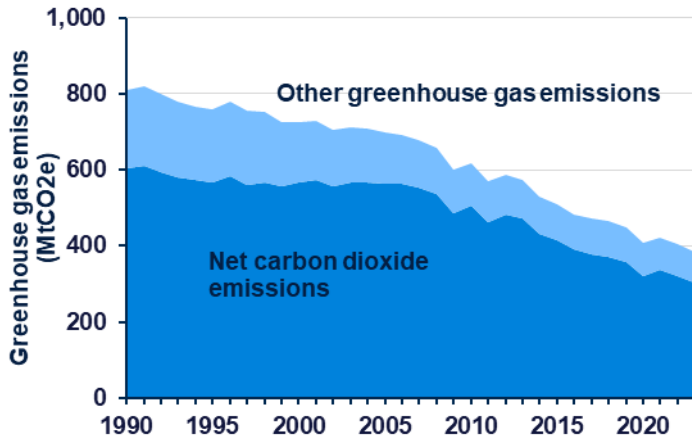
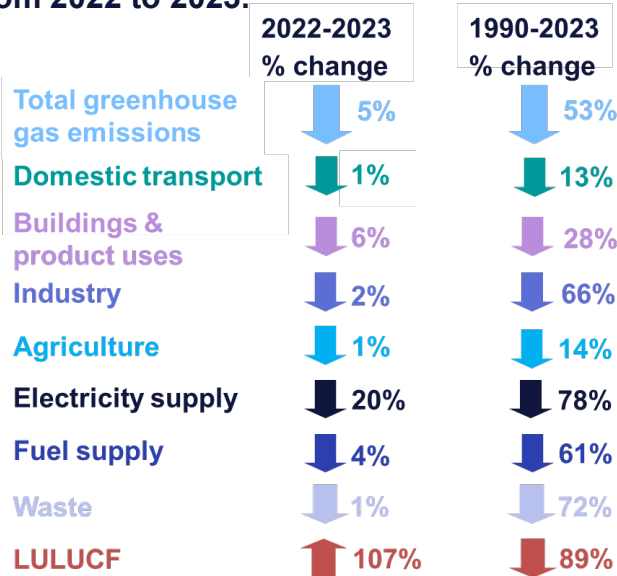


In 2023, UK territorial greenhouse gas emissions were 385 million tonnes CO₂ equivalent (MtCO₂e), down 5% from 2022 and 53% from 1990.

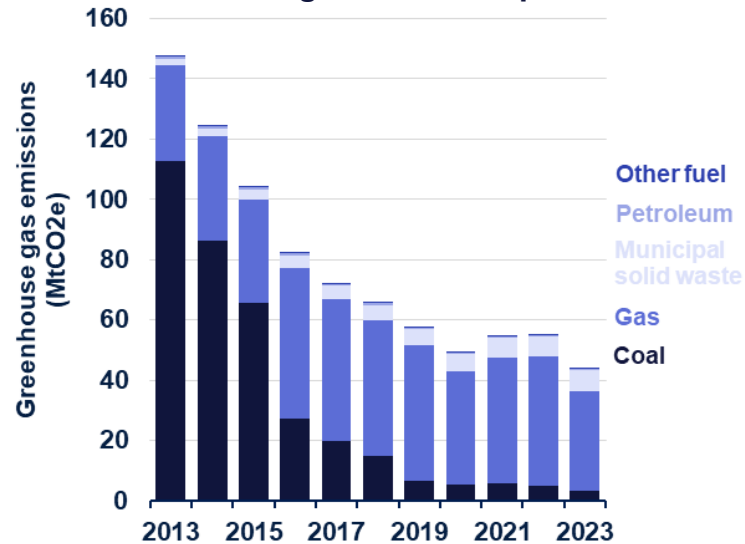
Domestic transport was the largest emitting sector in the UK in 2023, responsible for over a quarter of all emissions.



Almost all sectors saw a fall in emissions from 2022 to 2023.

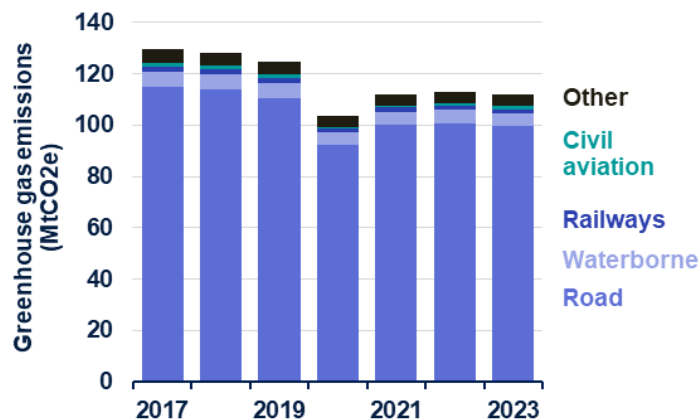


Electricity supply delivered the largest reduction in emissions from 2022 to 2023, as higher electricity imports and reduced electricity demand decreased gas use in UK power stations.

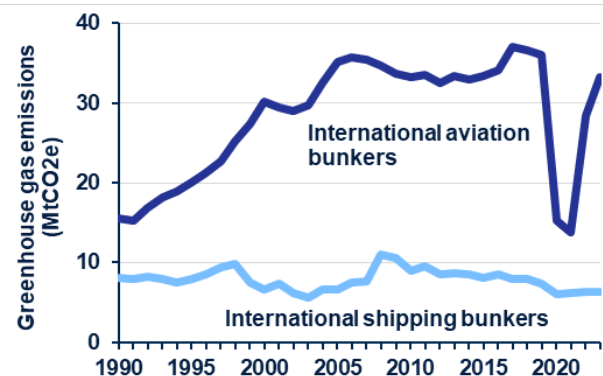


The land use, land use change and forestry (LULUCF) sector % changes are volatile as calculated from a low base.

Domestic transport emissions were significantly impacted by COVID-19 pandemic restrictions and remain below pre-pandemic levels in 2023.



Emissions from UK-based international aviation bunkers increased by 17% from 2022 to 2023 but still remain below pre-pandemic levels.



International fuel bunker emissions are not included in the UK totals shown elsewhere, which only include domestic transport.