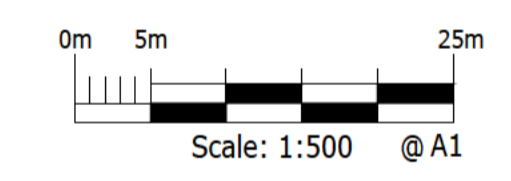


- NOTES:**
- THIS DRAWING IS TO BE READ IN CONJUNCTION WITH THE RELEVANT SPECIFICATION, INC. RISK ASSESSMENTS AND ALL OTHER RELATED DRAWINGS ISSUED BY THE ENGINEER.
 - DO NOT SCALE FROM THIS DRAWING. WORK FROM FIGURED DIMENSIONS ONLY.
 - ALL DIMENSIONS SHOWN ON THIS DRAWING ARE IN METRES UNLESS OTHERWISE STATED.
 - ALL DIMENSIONS, LEVELS AND SURVEY GRID CO-ORDINATES ARE TO BE CHECKED ON SITE AND THE ENGINEER NOTIFIED IMMEDIATELY OF ANY DISCREPANCIES PRIOR TO THE COMMENCEMENT OF THE WORKS.
 - NO DEVIATION FROM THE DETAILS SHOWN ON THIS DRAWING IS PERMITTED WITHOUT PRIOR PERMISSION FROM THE ENGINEER.
 - ANY WORKS OUTSIDE RED SITE BOUNDARY ARE FOR INFORMATION PURPOSES ONLY. UNLESS SPECIFICALLY NOTED, ALL WORKS OUTSIDE THE SITE BOUNDARY WILL BE UNDERTAKEN BY OTHERS UNDER A SEPARATE CONTRACT.

- KEY**
- ATTENUATION BASIN
 - SURFACE WATER SEWER AND MANHOLE
 - EMBANKMENT 1 IN 3
 - DEVELOPMENT CATCHMENT AREA
 - DIRECTIONAL FLOW ARROWS
 - FOUL WATER SEWERS AND MANHOLES
 - RISING MAIN ROUTE
 - INDICATIVE FINISHED FLOOR LEVEL
 - INDICATIVE GARAGE FLOOR LEVEL
 - INDICATIVE STRUCTURAL SLAB LEVEL
 - EXISTING FOUL WATER SEWERS AND MANHOLES
 - ROOT PROTECTION AREA



PRELIMINARY NOT YET APPROVED

| | | | | | |
|-----|--|-----|-----|-----|----------|
| B | DRAINAGE REVISED TO SUIT UPDATED LAYOUT & LEVELS | DR | TR | BB | 13.12.24 |
| A | FIRST ISSUE | TR | TR | BB | 31.10.24 |
| Rev | Description | Drn | Chk | App | Date |

ARDENT CONSULTING ENGINEERS
AN EMPLOYEE OWNED COMPANY

Third Floor
The Hallmark Building
52-56 Leadenhall Street
London
EC3M 5JE

Tel: 020 7680 4088
Web: www.ardent-ce.co.uk
E-mail: enquiries@ardent-ce.co.uk

Client

VISTRY EASTERN COUNTIES

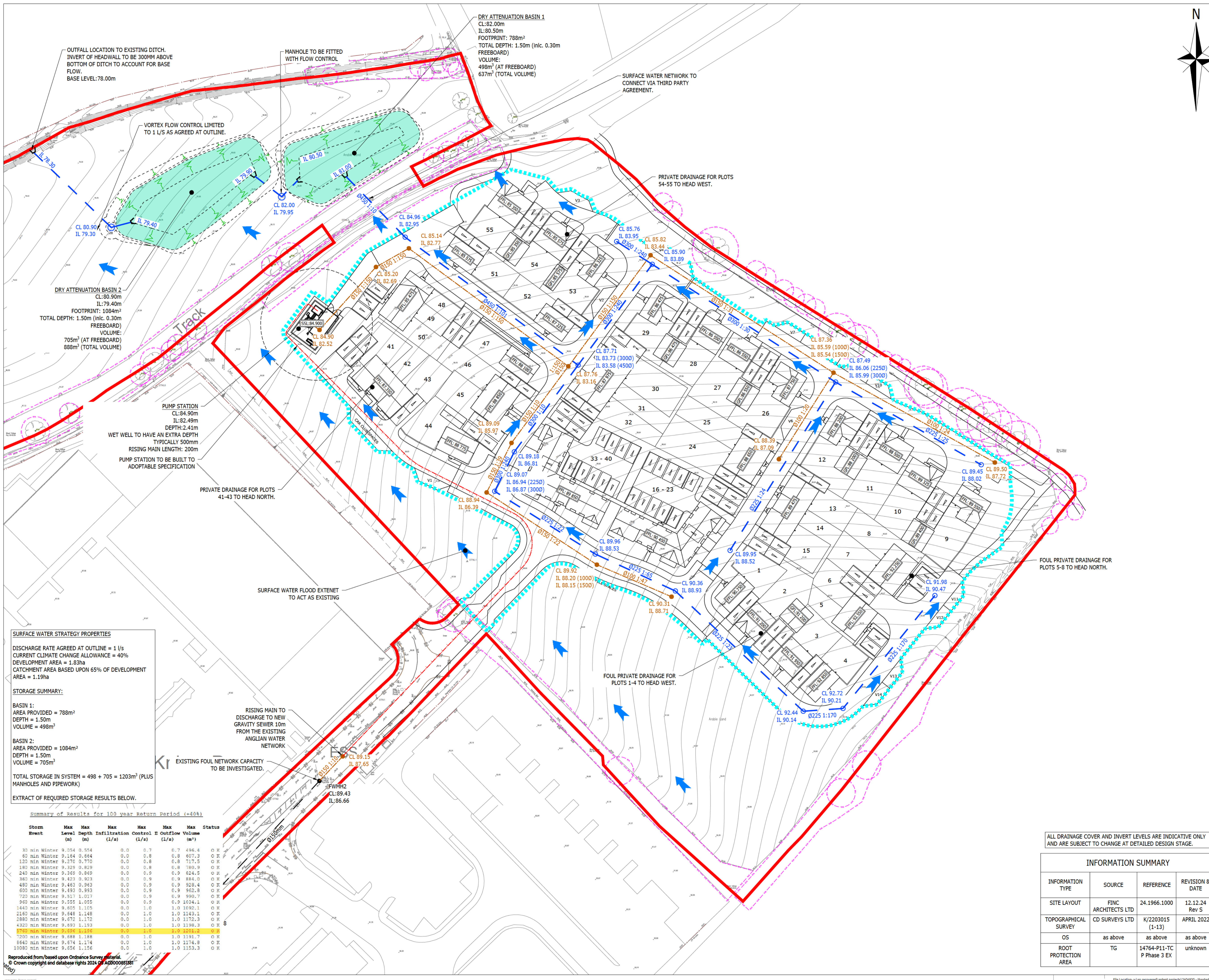
Project Title:
THAXTED ROAD, SAFFRON WALDEN

Drawing Title:
CONCEPT DRAINAGE STRATEGY

| | | |
|--|------------|-------------|
| Drawn by | Checked by | Approved by |
| TR | TR | BB |
| A1 Scale | Date | Revision |
| 1:500 | OCT 2024 | B |
| Drawing Number 2404920-ACE-XX-XX-DR-C-0151 | | |

ALL DRAINAGE COVER AND INVERT LEVELS ARE INDICATIVE ONLY AND ARE SUBJECT TO CHANGE AT DETAILED DESIGN STAGE.

| INFORMATION SUMMARY | | | |
|----------------------|---------------------|---------------------------|-----------------|
| INFORMATION TYPE | SOURCE | REFERENCE | REVISION & DATE |
| SITE LAYOUT | FINC ARCHITECTS LTD | 24.1966.1000 | 12.12.24 Rev 5 |
| TOPOGRAPHICAL SURVEY | CD SURVEYS LTD | K/2203015 (1-13) | APRIL 2022 |
| OS | as above | as above | as above |
| ROOT PROTECTION AREA | TG | 14764-P11-TC P Phase 3 EX | unknown |



SURFACE WATER STRATEGY PROPERTIES

DISCHARGE RATE AGREED AT OUTLINE = 1 l/s
CURRENT CLIMATE CHANGE ALLOWANCE = 40%
DEVELOPMENT AREA = 1.83ha
CATCHMENT AREA BASED UPON 65% OF DEVELOPMENT AREA = 1.19ha

STORAGE SUMMARY:

BASIN 1:
AREA PROVIDED = 788m²
DEPTH = 1.50m
VOLUME = 498m³

BASIN 2:
AREA PROVIDED = 1084m²
DEPTH = 1.50m
VOLUME = 705m³

TOTAL STORAGE IN SYSTEM = 498 + 705 = 1203m³ (PLUS MANHOLES AND PIPEWORK)

EXTRACT OF REQUIRED STORAGE RESULTS BELOW.

Summary of Results for 100 year Return Period (+40%)

| Storm Event | Max Level (m) | Max Depth (m) | Max Infiltration (l/s) | Max Control I (l/s) | Max Control II (l/s) | Max Outflow Volume (m ³) | Status |
|------------------|---------------|---------------|------------------------|---------------------|----------------------|--------------------------------------|--------|
| 30 min Winter | 9.354 | 0.554 | 0.0 | 0.7 | 0.7 | 496.4 | O K |
| 60 min Winter | 9.164 | 0.664 | 0.0 | 0.8 | 0.8 | 607.3 | O K |
| 120 min Winter | 9.270 | 0.770 | 0.0 | 0.8 | 0.8 | 717.5 | O K |
| 180 min Winter | 9.329 | 0.829 | 0.0 | 0.8 | 0.8 | 780.9 | O K |
| 240 min Winter | 9.369 | 0.969 | 0.0 | 0.9 | 0.9 | 824.5 | O K |
| 360 min Winter | 9.423 | 0.923 | 0.0 | 0.9 | 0.9 | 884.0 | O K |
| 480 min Winter | 9.463 | 0.963 | 0.0 | 0.9 | 0.9 | 928.4 | O K |
| 600 min Winter | 9.493 | 0.993 | 0.0 | 0.9 | 0.9 | 962.8 | O K |
| 720 min Winter | 9.517 | 1.017 | 0.0 | 0.9 | 0.9 | 990.7 | O K |
| 960 min Winter | 9.555 | 1.055 | 0.0 | 0.9 | 0.9 | 1034.1 | O K |
| 1440 min Winter | 9.605 | 1.105 | 0.0 | 1.0 | 1.0 | 1092.1 | O K |
| 2160 min Winter | 9.648 | 1.148 | 0.0 | 1.0 | 1.0 | 1143.1 | O K |
| 2880 min Winter | 9.672 | 1.172 | 0.0 | 1.0 | 1.0 | 1172.3 | O K |
| 4320 min Winter | 9.693 | 1.193 | 0.0 | 1.0 | 1.0 | 1198.3 | O K |
| 5760 min Winter | 9.696 | 1.196 | 0.0 | 1.0 | 1.0 | 1201.2 | O K |
| 7200 min Winter | 9.688 | 1.188 | 0.0 | 1.0 | 1.0 | 1191.7 | O K |
| 8640 min Winter | 9.674 | 1.174 | 0.0 | 1.0 | 1.0 | 1174.8 | O K |
| 10080 min Winter | 9.656 | 1.156 | 0.0 | 1.0 | 1.0 | 1153.3 | O K |

Reproduced from/based upon Ordnance Survey material.
© Crown copyright and database rights 2024 OS A000008381