

## Air Quality and Dust Monitoring Monthly Report – November 2024

**Lichfield District** Council



## Department for Transport

High Speed Two (HS2) Limited has been tasked by the Department for Transport (DfT) with managing the delivery of a new national high speed rail network. It is a non-departmental public body wholly owned by the DfT.

High Speed Two (HS2) Limited,  
Two Snowhill  
Snow Hill Queensway  
Birmingham B4 6GA

Telephone: 08081 434 434

General email enquiries: [HS2enquiries@hs2.org.uk](mailto:HS2enquiries@hs2.org.uk)

Website: [www.gov.uk/hs2](http://www.gov.uk/hs2)

A report prepared by EWCs and MWCCs on behalf of HS2 Ltd.

High Speed Two (HS2) Limited has actively considered the needs of blind and partially sighted people in accessing this document. The text will be made available in full on the HS2 website. The text may be freely downloaded and translated by individuals or organisations for conversion into other accessible formats. If you have other needs in this regard please contact High Speed Two (HS2) Limited.

© High Speed Two (HS2) Limited, 2024, except where otherwise stated.

Copyright in the typographical arrangement rests with High Speed Two (HS2) Limited.

This information is licensed under the Open Government Licence v2.0. To view this licence, visit [www.nationalarchives.gov.uk/doc/open-government-licence/version/2](http://www.nationalarchives.gov.uk/doc/open-government-licence/version/2) **OGI** or write to the Information Policy Team, The National Archives, Kew, London TW9 4DU, or e-mail: [psi@nationalarchives.gsi.gov.uk](mailto:psi@nationalarchives.gsi.gov.uk). Where we have identified any third-party copyright information you will need to obtain permission from the copyright holders concerned.



# Monthly Summary

- 1.1.1 This Summary Report is published in fulfilment of commitments detailed in the High Speed Rail (London-West Midlands) Environmental Minimum Requirements, Annex 1: Code of Construction Practice, for the nominated undertaker to present the results of air quality and dust monitoring undertaken in Lichfield District Council (LDC) during November 2024.
- 1.1.2 Figures 1 and Figure 2 in Appendix A presents the current worksites together with the dust monitoring locations.
- 1.1.3 This summary should be read in conjunction with the overview monitoring report monthly available from [www.gov.uk/government/collections/monitoring-the-environmental-effects-of-hs2](http://www.gov.uk/government/collections/monitoring-the-environmental-effects-of-hs2), which highlights: the applicable standards and guidance, as well as the air quality and dust monitoring methodologies to be implemented by nominated undertakers throughout construction.
- 1.1.4 The current worksites, as presented in Appendix A, Figures 1 and 2, include:

## **Shaw Lane Embankment and Underbridge (Sublot 8.2)**

### Streethay Area 3/4/5/6 works

- Piling works including excavation with piling rig, installation and removal of casings, use of crane for different lifting activities, concrete deliveries, cages deliveries and other removals with arisings with excavator and lorries.
- Piling platform maintenance.
- Stone deliveries lorries, stone removal and installation with use of excavator, compaction with roller.

### Streethay Area 1 works

- Deliveries and collection.
- Road sweepers.
- Maintenance.
- Strimming.
- Plant used: Small items of plants including plate compactors, excavators and dumpers, excavator and strimming machine.

## **Sublot 8.3**

### Streethay Area 3/4/5/6 works

- Piling works including excavation with piling rig, installation and removal of casings, use of crane for different lifting activities, concrete deliveries, cages deliveries and other removals with arisings with excavator and lorries.

- Piling platform maintenance.
- Stone deliveries lorries, stone removal and installation with use of excavator, compaction with roller.

#### Streethay Area 1 works

- Deliveries and collection.
- Road sweepers.
- Maintenance.
- Strimming.
- Plant used: Small items of plants including plate compactors, excavators and dumpers, excavator and strimming machine.

1.1.5 Seven (7) dust monitors are installed around these worksites, where works are underway. These sites returned a low to medium dust risk rating.

1.1.6 Dust monitoring locations and results are presented in Appendix B, Table 1, together with line charts of monthly data from the dust monitors presented in Figure 3. All continuous dust monitoring is undertaken using indicative monitors. Despite being Environment Agency (MCERTS) certified, indicative monitors carry a higher level of uncertainty than reference monitors, and therefore cannot be strictly compared with Air Quality Standards for human health and the environment. The purpose of the monitoring undertaken is to ensure the effectiveness of the on-site mitigation.

1.1.7 The trigger level for PM<sub>10</sub> concentrations of 190 µg/m<sup>3</sup>, over a 1-hour period, in accordance with the updated guidance document '*Guidance on Monitoring in the Vicinity of Demolition and Construction Sites – (October 2018)*' has been applied.

1.1.8 No (0) dust trigger alerts were recorded during the monitoring period (November 2024).

1.1.9 Monitor SCS001 was installed and commissioned on 21<sup>st</sup> November 2024.

1.1.10 Data capture was below 90% for multiple monitors due to:

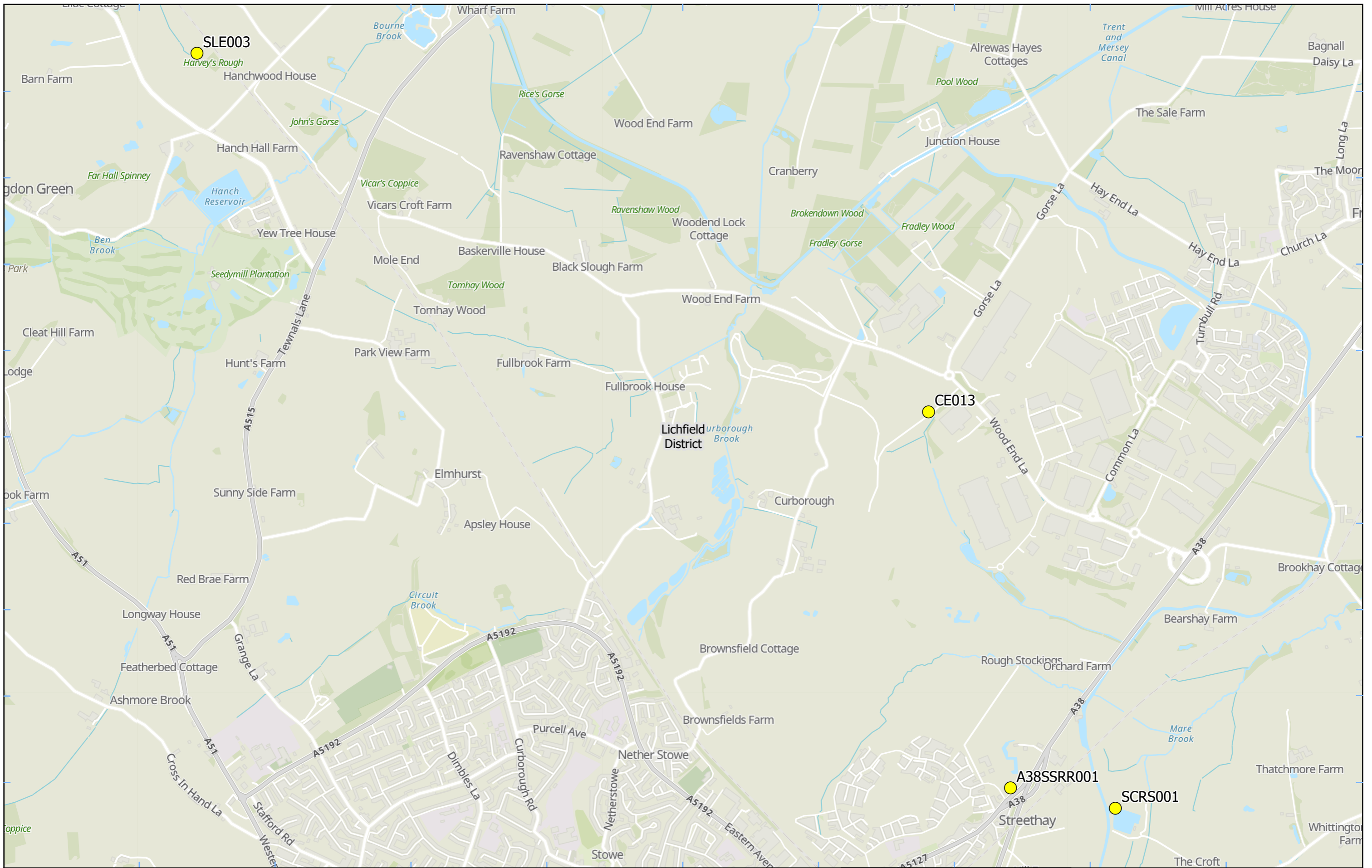
- Monitor CE013 - A field calibration was done on 11th November 2024, and a battery refresh was done on 29th November 2024. After the field calibration and battery refresh, the power supply issues were resolved.
- Monitor WCC001 - A field calibration was done on 4th November 2024. A field calibration is scheduled for 10th February 2025, but a site visit will be arranged to go to this monitor before this to resolve the power supply issues.
- Monitor WCC002 - A field calibration was done on 4th November 2024. A field calibration is scheduled for 10th February 2025, but a site visit will be arranged to go to this monitor before this to resolve the power supply issues.

- Monitor SCRS001 – Monitor issues due to a dead internal battery. A battery refresh and full dust work up was done on 12th November 2024. After the battery refresh and full dust work up, the monitor issues were resolved.

1.1.11 There were no (0) complaints received during the reporting period (November 2024).

# Appendix A – Worksites and Monitoring Locations

Figures 1-2: Worksites and Monitoring Locations within LDC



**Legend**

- Dust Monitor
- District Borough Unitary Boundaries

Service Layer Credits: GB Topographic: Contains OS data © Crown Copyright and database right 2023  
Contains data from OS Zoomstack

Map Number

Map Name  
**Monitoring Locations  
In LDC (Sheet 1)**

**Lichfield District Council**

HS2 Ltd accept no responsibility for any circumstances, which arise from the reproduction of this map after alteration, amendment or abbreviation or if it is issued in part or issued incomplete in any way.

Registered in England. Registration number 06791686.  
Registered office: 2 Snowhill, Queensway,  
Birmingham B4 6GA.

© Crown copyright and database rights 2025.  
Ordnance Survey Licence Number 100049190.

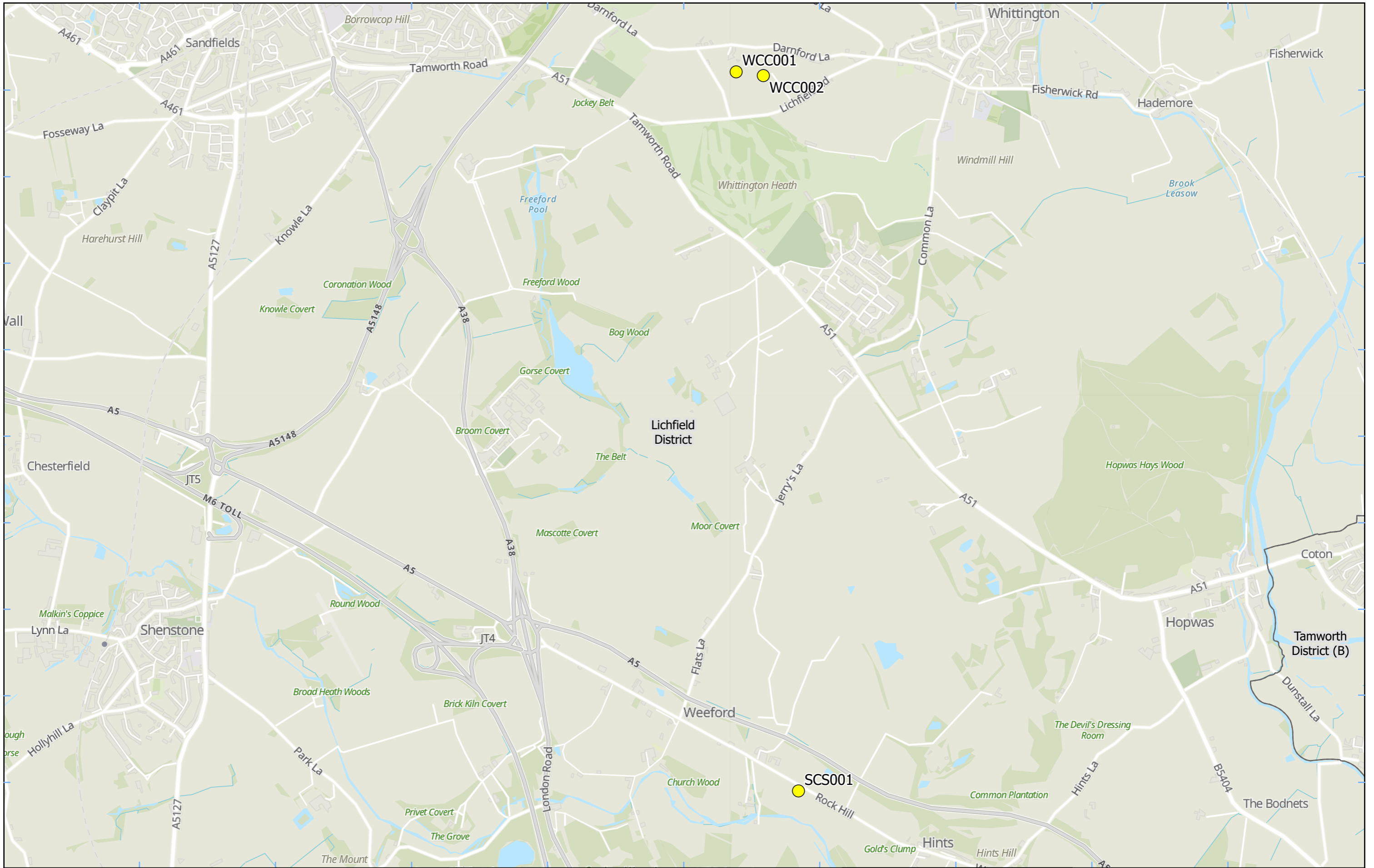
**Doc Number:**

Scale at A3: 1:18,000

Metres

**Date: 19/12/24**





**Legend**

- Dust Monitor
- District Borough Unitary Boundaries

Service Layer Credits: GB Topographic: Contains OS data © Crown Copyright and database right 2023  
Contains data from OS Zoomstack

Map Number

Map Name  
**Monitoring Locations  
In LDC (Sheet 2)**

**Lichfield District Council**

HS2 Ltd accept no responsibility for any circumstances, which arise from the reproduction of this map after alteration, amendment or abbreviation or if it is issued in part or issued incomplete in any way.

Registered in England. Registration number 06791686.  
Registered office: 2 Snowhill, Queensway,  
Birmingham B4 6GA.

© Crown copyright and database rights 2025.  
Ordnance Survey Licence Number 100049190.

Scale at A3: 1:22,000

Metres

Doc Number: **Date: 19/12/24**

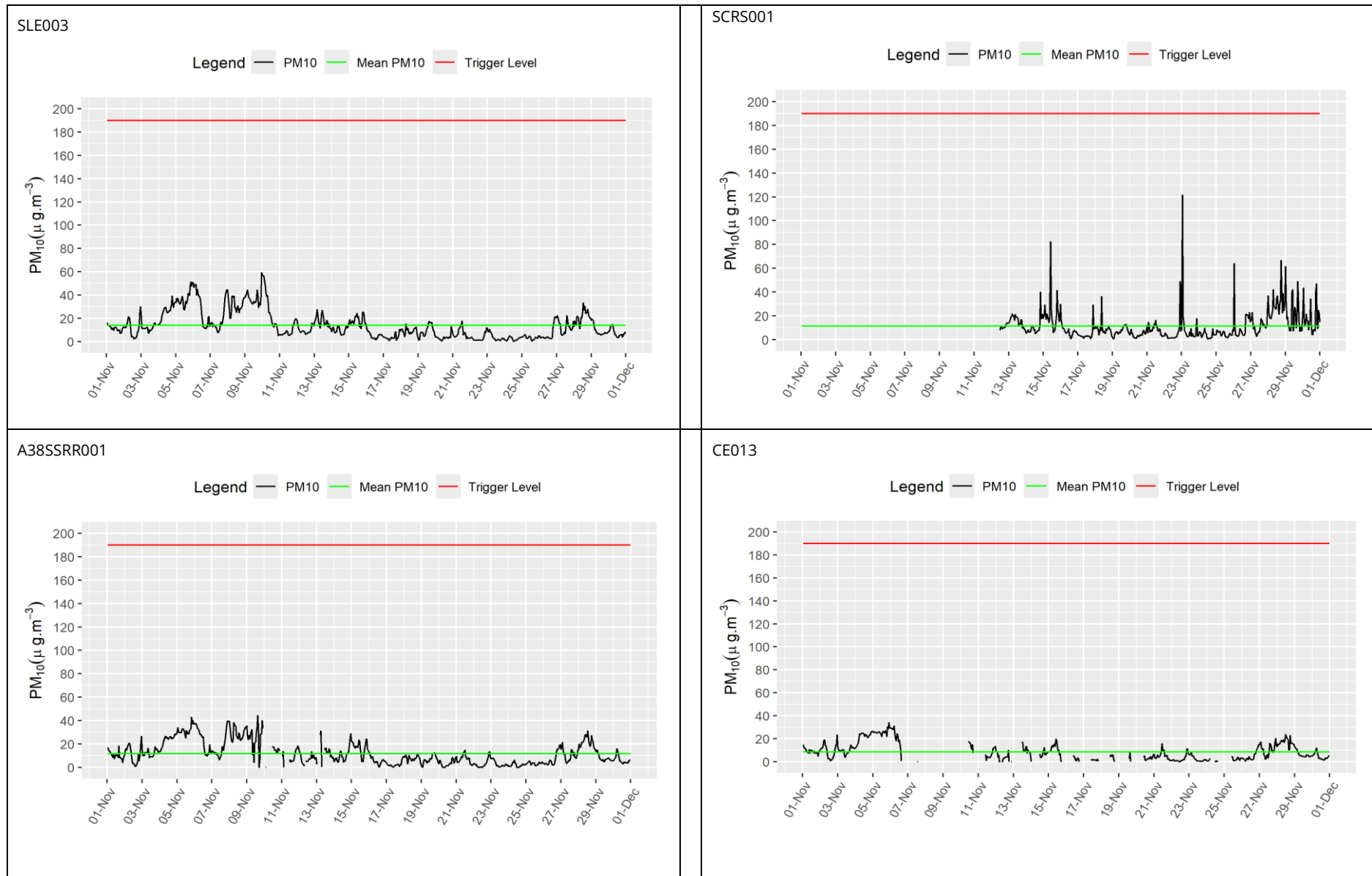


## Appendix B – Dust Monitoring Results

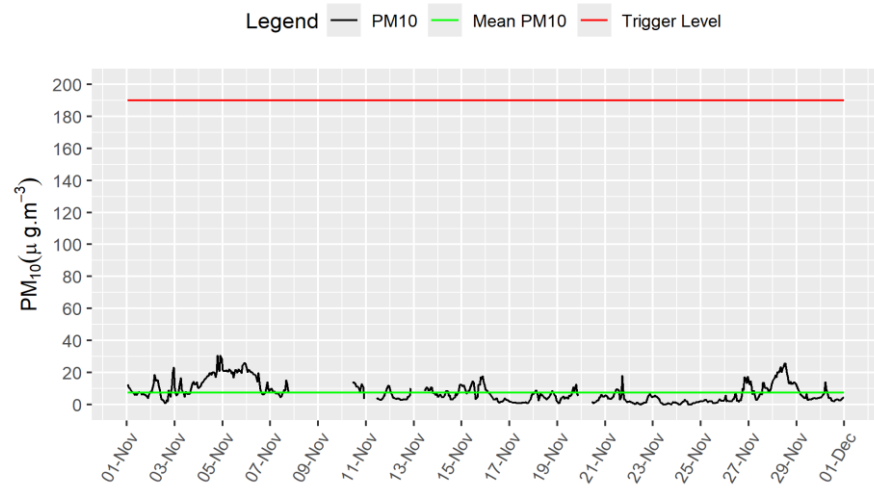
Table 1: Dust Monitoring Locations and Results

Monitoring site ID	Coordinates (X,Y)	Location description	Dust risk rating for site	Monitoring site active during period	Change to site since previous period report	Mean 1-hour PM <sub>10</sub> concentration (µg/m <sup>3</sup> )	Minimum 1-hour PM <sub>10</sub> concentration (µg/m <sup>3</sup> )	Maximum 1-hour PM <sub>10</sub> concentration (µg/m <sup>3</sup> )	Number of 1- hour periods exceeding trigger level of 190 µg/m <sup>3</sup>	Data capture for Month (%)
SLE003	410077, 324464	New Farm Produce South, Shaw Lane Embankment	N	Yes	Yes	14.0	0.4	59.2	0	100.0
SCRS001	414895, 310500	Streethay Cutting Retaining Structure, King's Orchard Marina	M	Yes	Yes	11.6	0.6	121.5	0	61.9
A38SSRR001	414345, 310607	Thompson Way, Streethay, Fradley and Streethay	M	Yes	Yes	11.8	0.1	44.4	0	96.9
CE013	413915, 312581	Midlands Karting, Wood End Lane	M	Yes	Yes	8.7	0.1	34.1	0	66.8
WCC001	414682, 308298	Whittington Hill Farm, Darnford Lane	L	Yes	Yes	7.5	0.1	30.6	0	86.5
WCC002	414856, 308274	Ellfield House, Darnford House	L	Yes	Yes	7.8	0.1	33.8	0	62.1
SCS001	415081, 303691	The Lodge, Rock Hill	N	Yes	N/A	6.6	0.1	22.4	0	31.1 (100.0) <b>Error! Bookmark not defined.</b>

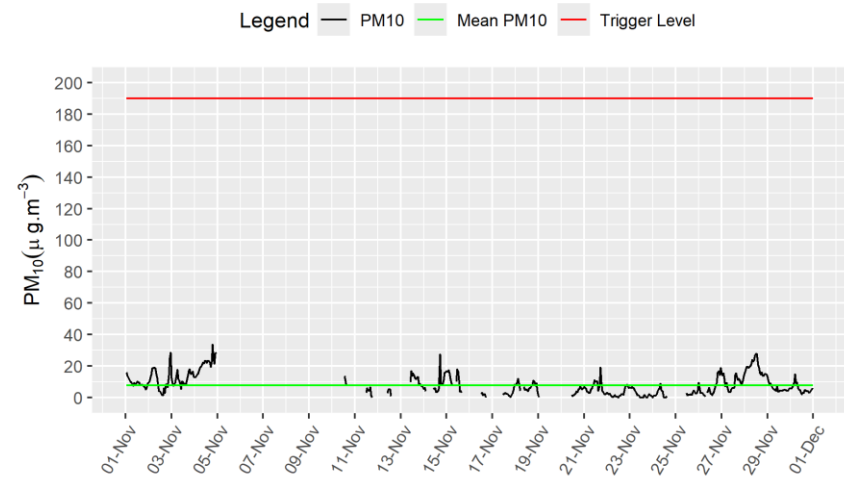
Figure 3: Construction dust 1-hour mean indicative PM<sub>10</sub> concentration for all dust monitors



WCC001



WCC002



SCS001

