

Air Quality and Dust Monitoring Monthly Report – November 2024

Cherwell District Council



Department for Transport

High Speed Two (HS2) Limited has been tasked by the Department for Transport (DfT) with managing the delivery of a new national high speed rail network. It is a non-departmental public body wholly owned by the DfT.

High Speed Two (HS2) Limited,
Two Snowhill
Snow Hill Queensway
Birmingham B4 6GA

Telephone: 08081 434 434

General email enquiries: HS2enquiries@hs2.org.uk

Website: www.gov.uk/hs2

A report prepared by EWCs and MWCCs on behalf of HS2 Ltd.

High Speed Two (HS2) Limited has actively considered the needs of blind and partially sighted people in accessing this document. The text will be made available in full on the HS2 website. The text may be freely downloaded and translated by individuals or organisations for conversion into other accessible formats. If you have other needs in this regard please contact High Speed Two (HS2) Limited.

© High Speed Two (HS2) Limited, 2024, except where otherwise stated.

Copyright in the typographical arrangement rests with High Speed Two (HS2) Limited.

This information is licensed under the Open Government Licence v2.0. To view this licence, visit www.nationalarchives.gov.uk/doc/open-government-licence/version/2 **OGI** or write to the Information Policy Team, The National Archives, Kew, London TW9 4DU, or e-mail: psi@nationalarchives.gsi.gov.uk. Where we have identified any third-party copyright information you will need to obtain permission from the copyright holders concerned.



Monthly Summary

1.1.1 This Summary Report is published in fulfilment of commitments detailed in the High Speed Rail (London-West Midlands) Environmental Minimum Requirements, Annex 1: Code of Construction Practice, for the nominated undertaker to present the results of dust monitoring undertaken in the Cherwell District Council (CDC) during November 2024.

1.1.2 Figure 1 in Appendix A presents the current worksites together with the dust monitoring locations for November 2024.

1.1.3 This summary should be read in conjunction with the overview monitoring report available from www.gov.uk/government/collections/monitoring-the-environmental-effects-of-hs2, which highlights: the applicable standards and guidance, as well as the air quality and dust monitoring methodologies to be implemented by nominated undertakers throughout construction.

1.1.4 The current worksites, as presented in Appendix A, Figure 1, include:

A4421 Overbridge

- Installation of parapet
- Ongoing earthworks in the Cut around A4421 North between Featherbed Lane and Warren Farm.

A421 Overbridge worksite

- Completion of backfill behind east and west abutments
- Delivery and installation of parapets
- Concrete pour - blinding to secure parapets positioned on wingwalls.

1.1.5 Two (2) dust monitors are installed around these worksites, where works are underway. These sites returned a medium dust risk rating.

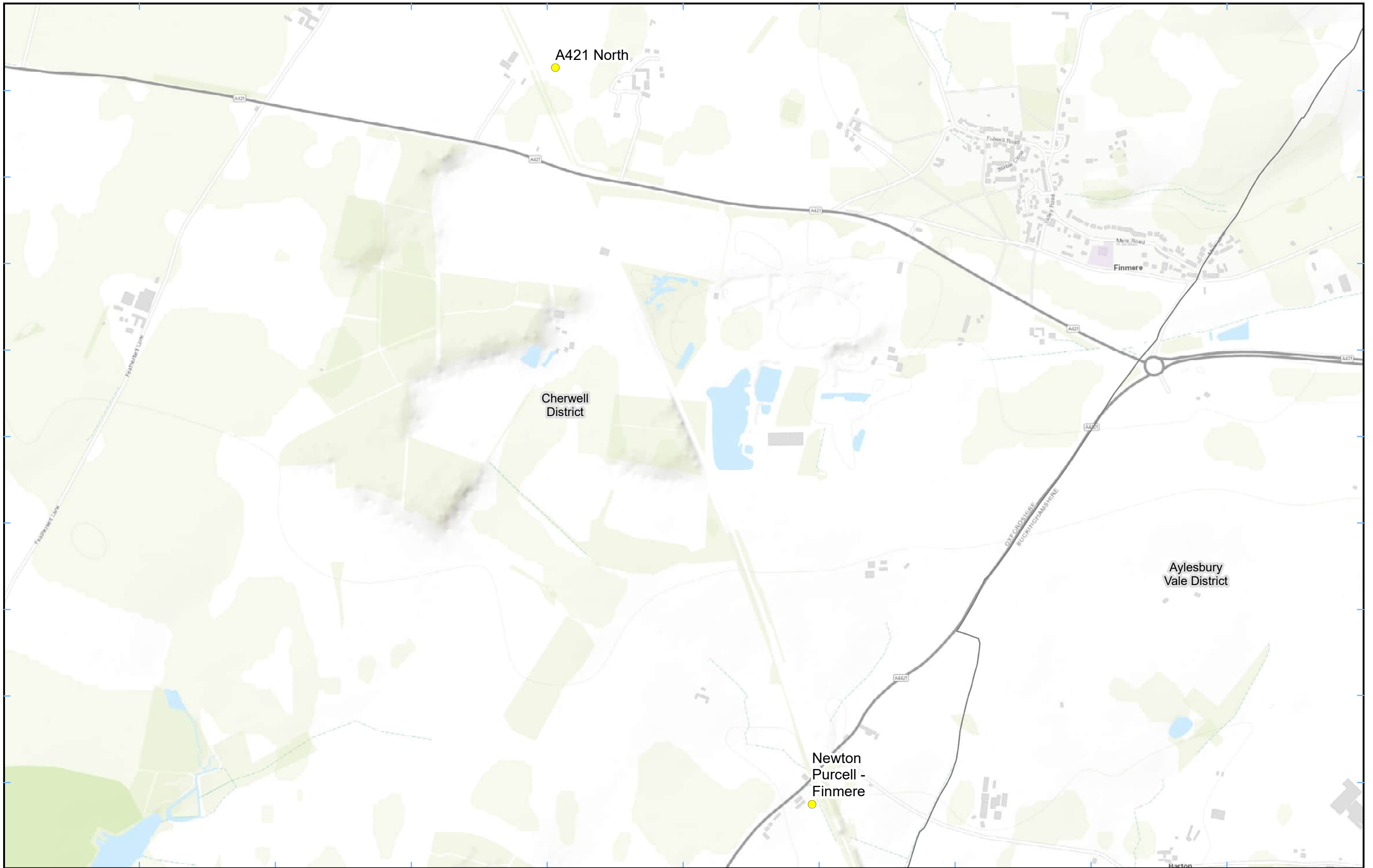
1.1.6 Dust monitoring locations and results are presented in Appendix B, Table 1, together with line charts of monthly data from each dust monitor presented in Figure 2. All continuous dust monitoring is undertaken using indicative monitors. Despite being Environment Agency (MCERTS) certified, indicative monitors carry a higher level of uncertainty than reference monitors, and therefore cannot be strictly compared with Air Quality Standards for human health and the environment. The purpose of the monitoring undertaken is to ensure the effectiveness of the on-site mitigation.

1.1.7 The trigger level for PM₁₀ concentrations of 190 µg/m³, over a 1-hour period, in accordance with the updated guidance document '*Guidance on Monitoring in the Vicinity of Demolition and Construction Sites – (October 2018)*' has been applied.

- 1.1.8 No (0) dust trigger alerts were recorded during the monitoring period (November 2024).
- 1.1.9 Data capture was below 90% for multiple monitors due to the Newton Purcell-Finmere monitor had a battery fault throughout the month. Access to location was difficult to replace batteries. A421 North monitor had a battery fault.
- 1.1.10 There were no (0) complaints received during the reporting period (November 2024).

Appendix A – Worksites and Monitoring Locations

Figure 1: Worksite and Monitoring locations within CDC



Legend

- Dust Monitor
- District Borough Unitary Boundaries

Service Layer Credits: Sources: Esri, HERE, Garmin, Intermap, increment P Corp., GEBCO, USGS, FAO, NPS, NRCAN, GeoBase, IGN, Kadaster NL, Ordnance Survey, Esri Japan, METI, Esri China (Hong Kong), (c) OpenStreetMap contributors, and the GIS User Community

Map Number

Map Name
**Monitoring Locations
In T2G, Cherwell DC (Sheet 1)**

Cherwell District Council

hs2

HS2 Ltd accept no responsibility for any circumstances, which arise from the reproduction of this map after alteration, amendment or abbreviation or if it is issued in part or issued incomplete in any way.

Registered in England. Registration number 06791686.
Registered office: 2 Snowhill, Queensway,
Birmingham B4 6GA.

© Crown copyright and database rights 2023.
Ordnance Survey Licence Number 100049190.

Scale at A3: 1:10,000

0 100 200 300 400
Metres

Doc Number:

Date: 06/07/23

Appendix B – Dust Monitoring Results

Table 1: Dust Monitoring Locations and Results

Monitoring site ID	Coordinates (X,Y)	Location description	Dust risk rating for site	Monitoring site active during period	Change to site since previous period report	Mean 1-hour PM ₁₀ concentration (µg/m ³)	Minimum 1-hour PM ₁₀ concentration (µg/m ³)	Maximum 1-hour PM ₁₀ concentration (µg/m ³)	Number of 1-hour periods exceeding trigger level of 190 µg/m ³	1-hour data capture (%)
Newton Purcell - Finmere	462904, 231144	Site boundary adjacent property on A4421	M	Yes	Y	8.1	1.0	55.0	0	23.3
A421 North	462156, 233290	A421	M	Yes	Y	12.2	1.0	69.0	0	66.3

Figure 2: Continuous dust 1-hour mean indicative PM₁₀ concentration for all monitors

