



Department
for Work &
Pensions

An introduction to Winter Fuel Payment

**Easy
Read**



Contents

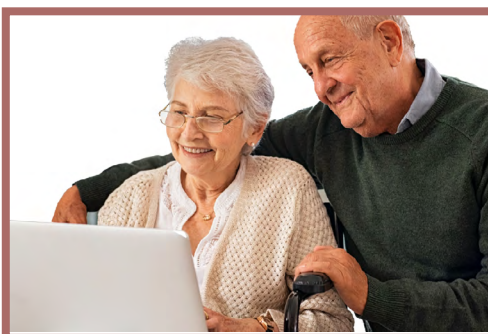
1



Introduction

Page 4

2



Who can get Winter Fuel Payment

Page 5

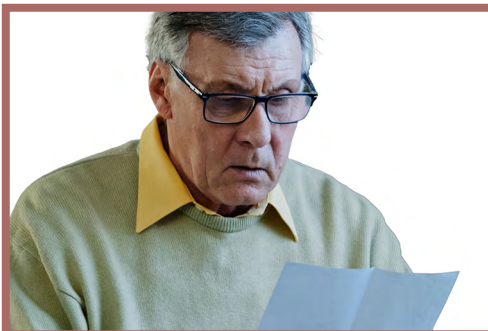
3



How much Winter Fuel Payment can you get

Page 7

4



About your payment and when you get it

Page 8

Contents

5



If you live abroad

Page 9

6



Where to find more information

Page 11

1

Introduction



Department
for Work &
Pensions

Winter Fuel Payment is money from the Department for Work and Pensions.



In England and Wales, older people may get Winter Fuel Payment to help them with their heating bills.

For more information, go to www.gov.uk/winter-fuel-payment

2

Who can get Winter Fuel Payment



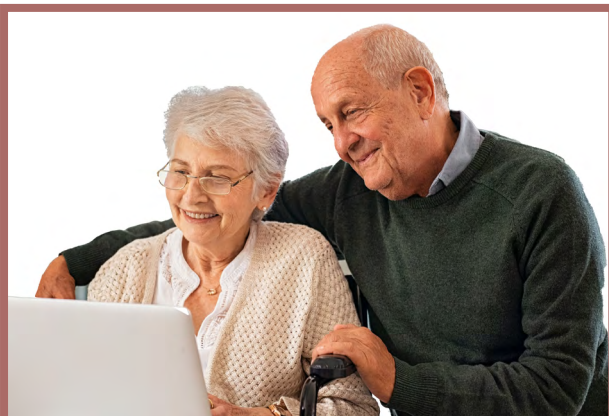
You can get Winter Fuel Payment if you get:

- Pension Credit
 - Universal Credit
 - Income Support
- or another means-tested benefit.

Other means-tested benefits include:



- Income-based Jobseeker's Allowance
- Income-related Employment and Support Allowance
- Child Tax Credit
- Working Tax Credit.



You may get a payment if:

- You were born on or before 22 September 1958 and
- You lived in England or Wales during the qualifying week.



The qualifying week starts on Monday 16 September 2024.



If you live abroad in an eligible country, you may be able to get a payment.

This depends on your circumstances.

3

How much Winter Fuel Payment you get



A Winter Fuel Payment is either £200 or £300 per household.

80+
Years

You will get the higher amount if you are 80 years of age or over.

4

About your payment and when you get it



You will get a letter in October or November to tell you what the total amount is and how it will be paid.

Your automatic payment will go into the same account as your Pension Credit or other benefits.



Payments are from late November 2024.

Eligible people living in England and Wales do not have to make a claim.

5

If you live abroad



If you live abroad, you will need to:

- Be getting a means-tested benefit where you live
- Make a claim for Winter Fuel Payment even if you got it last year.

Other criteria apply.



A claim must be made before 31 March 2025.

If you live in Scotland

mygov.scot

If you are eligible, it is Scottish Government's intention you will get an equivalent payment this winter.

This payment will be made by the Department for Work and Pensions.

For more information, go to www.mygov.scot/winter-fuel-payment-in-scotland

If you live in Northern Ireland



If you are eligible, you will get a Winter Fuel Payment from the Department for Communities, paid by the Department for Work and Pensions.

For more information, go to www.nidirect.gov.uk/articles/winter-fuel-payment

6

Where to find more information



Go to www.gov.uk/winter-fuel-payment for more information on:

- Eligibility
- Amounts
- Key dates
- The claim form, if you live abroad.