

**DETAIL PLANTING PLAN LEGEND - SW-02**

**Woodland Edge - Flowering Shrub and Perennial Shady Mix**

**Swathes:**

Species	Size
<i>Carex testacea</i>	2L Pot
<i>Dryopteris lepidopoda</i>	2L Pot
<i>Dryopteris marginalis</i>	2L Pot

**Pockets:**

Species	Size
<i>Euphorbia amygdaloides</i>	2L Pot
<i>Geranium macrorrhizum 'Ingwersen'</i>	2L Pot
<i>Heuchera 'Plum pudding'</i>	2L Pot
<i>Vinca minor</i>	2L Pot

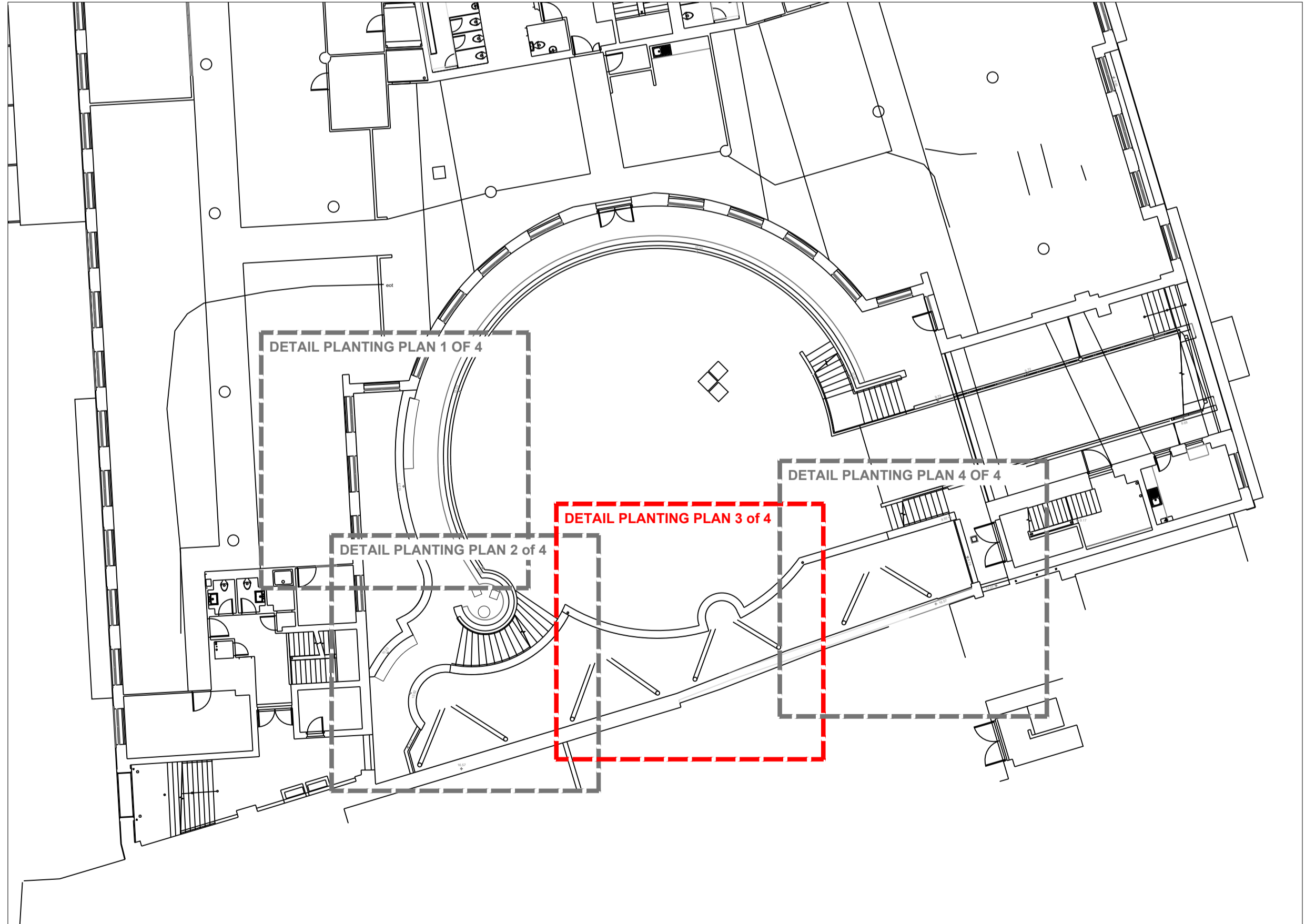
**Emergents/ Pops:**

Species	Size
<i>Rodgersia aesculifolia</i>	3L Pot

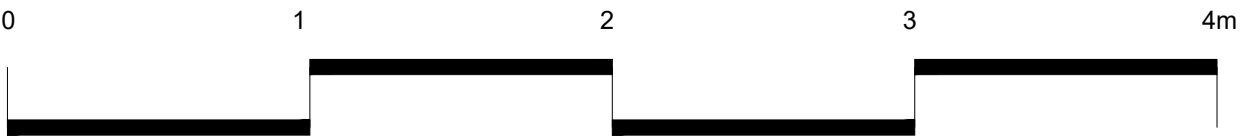
**Bulbs / Corms**

Species	Density
<i>Allium 'Red Mohican'</i>	9/m <sup>2</sup>
<i>Iris sibirica 'Tropic night'</i>	6/m <sup>2</sup>

For numbers of plants and bulbs refer to planting schedule 699-CTF-XX-XX-SH-L-50001



Do not scale drawings. All dimensions to be checked on site. Errors to be reported immediately to landscape architect. To be read in conjunction with all relevant architects, Services and engineers drawings.



<b>Revision Tracker</b>	<b>Status</b>	<b>Date</b>
P01 - For information	S2	06.11.2024

**Churchman Thornhill Finch**  
 London  
 3rd Floor, 14 Bowden Street,  
 Kennington, London SE11 4DS  
 +44(0)20 3727 6780  
 Bristol  
 1.14 Temple Studios,  
 Temple Gate, BS1 6QA  
 +44(0)20 3727 6788  
 mail@churchmanthornhillfinch.co.uk

**Redcliff Quay**  
 Detail planting plan - Courtyard 3 of 4  
 699-CTF-XX-XX-DR-L-50109

North arrow symbol

Status **S2**

Revision **P01**