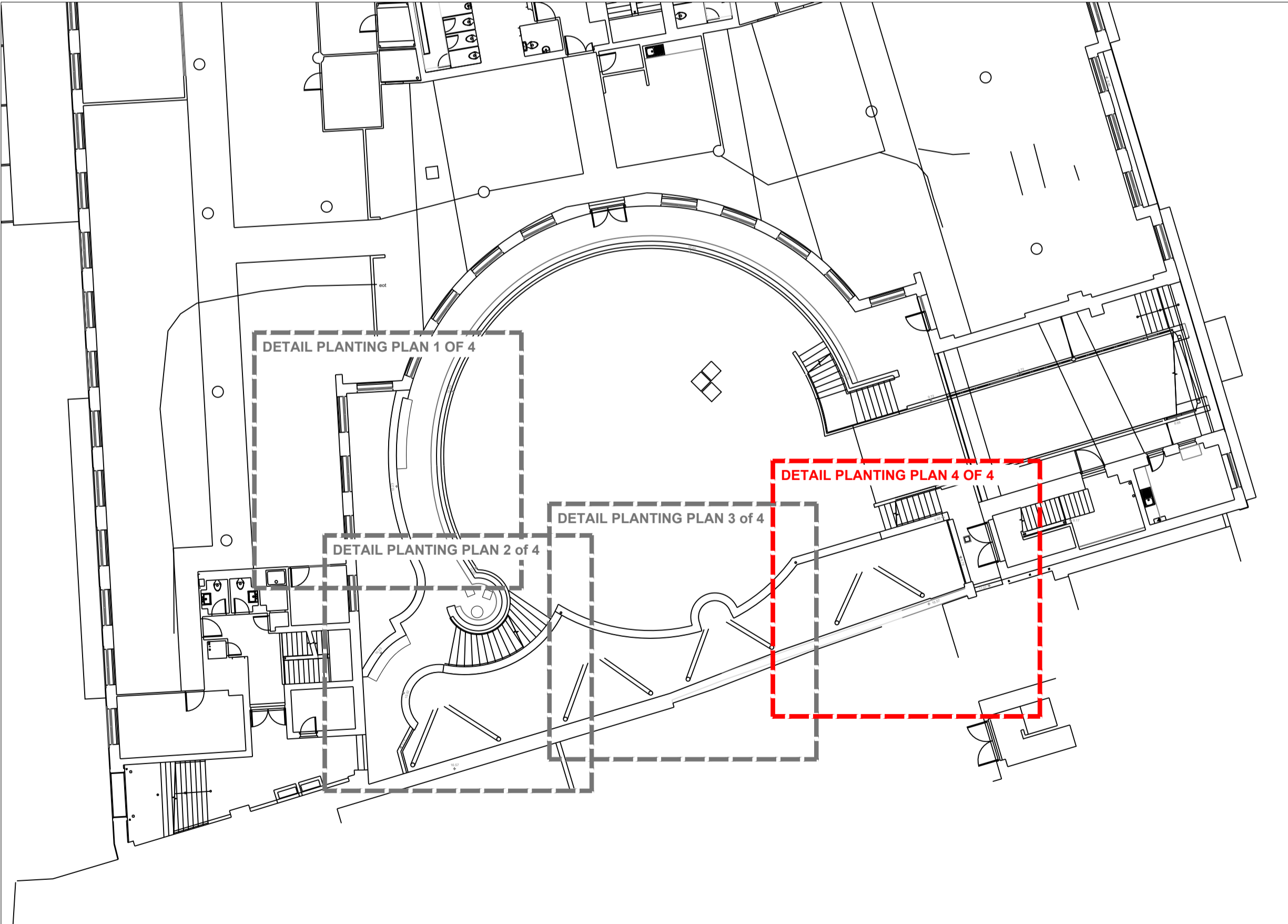




DETAIL PLANTING PLAN LEGEND - SW-02
Woodland Edge - Flowering Shrub and Perennial Shady Mix

Swathes:		Pockets:		Emergents/ Pops:				
Species	Size	Species	Size	Species	Size			
	Carex testacea	2L Pot		Euphorbia amygdaloides	2L Pot		Rodgersia aesculifolia	3L Pot
	Dryopteris lepidopoda	2L Pot		Geranium macrorrhizum 'Ingwersen'	2L Pot			
	Dryopteris marginalis	2L Pot		Heuchera 'Plum pudding'	2L Pot			
				Vinca minor	2L Pot			
						Bulbs / Corms		
						Species		Density
							Allium 'Red Mohican'	9/m ²
							Iris sibirica 'Tropic night'	6/m ²

For numbers of plants and bulbs refer to planting schedule 699-CTF-XX-XX-SH-L-50001



Do not scale drawings. All dimensions to be checked on site.
 Errors to be reported immediately to landscape architect.
 To be read in conjunction with all relevant architects, Services and engineers drawings.



Revision Tracker	Status	
P01 - For information	S2	06.11.2024

Churchman Thornhill Finch
 London
 3rd Floor, 14 Bowden Street,
 Kennington, London SE11 4DS
 +44(0)20 3727 6780

Redcliff Quay
 Detail planting plan - Courtyard 4 of 4
 699-CTF-XX-XX-DR-L-50110

Date: 06.11.2024
 Scale: 1:25/A1
 Drawn: KM/DF

Location: Bristol
 Client: Skelton Developments

Bristol
 1.14 Temple Studios,
 Temple Gate, BS1 6QA
 +44(0)20 3727 6788
 mail@churchmanthornhillfinch.co.uk

Status: **S2**
 Revision: **P01**