

DETAIL PLANTING PLAN LEGEND - SW-01

Coastal Garden - Flowering Shrub and Perennial Mix

Swathes:

Species	Size
Artemisia 'Powis Castle'	2L Pot
Stipa calamagrostis	2L Pot
Stipa gigantea	2L Pot

Pockets:

Species	Size
Anemone x hybrida 'Honorable Jobert'	2L Pot
Salvia 'Blue Spire'	2L Pot
Santolina chamaecyparissus	1L Pot

Emergents/ Pops:

Species	Size
Agapanthus 'Polar Ice'	2L Pot
Armeria maritima	1L Pot
Olearia x haastii	3L Pot

Bulbs / Corms

Species	Density
Nerine bowdenii 'Isabel'	4/m ²

DETAIL PLANTING PLAN LEGEND - SW-02

Woodland Edge - Flowering Shrub and Perennial Shady Mix

Swathes:

Species	Size
Carex testacea	2L Pot
Dryopteris lepidopoda	2L Pot
Dryopteris marginalis	2L Pot

Pockets:

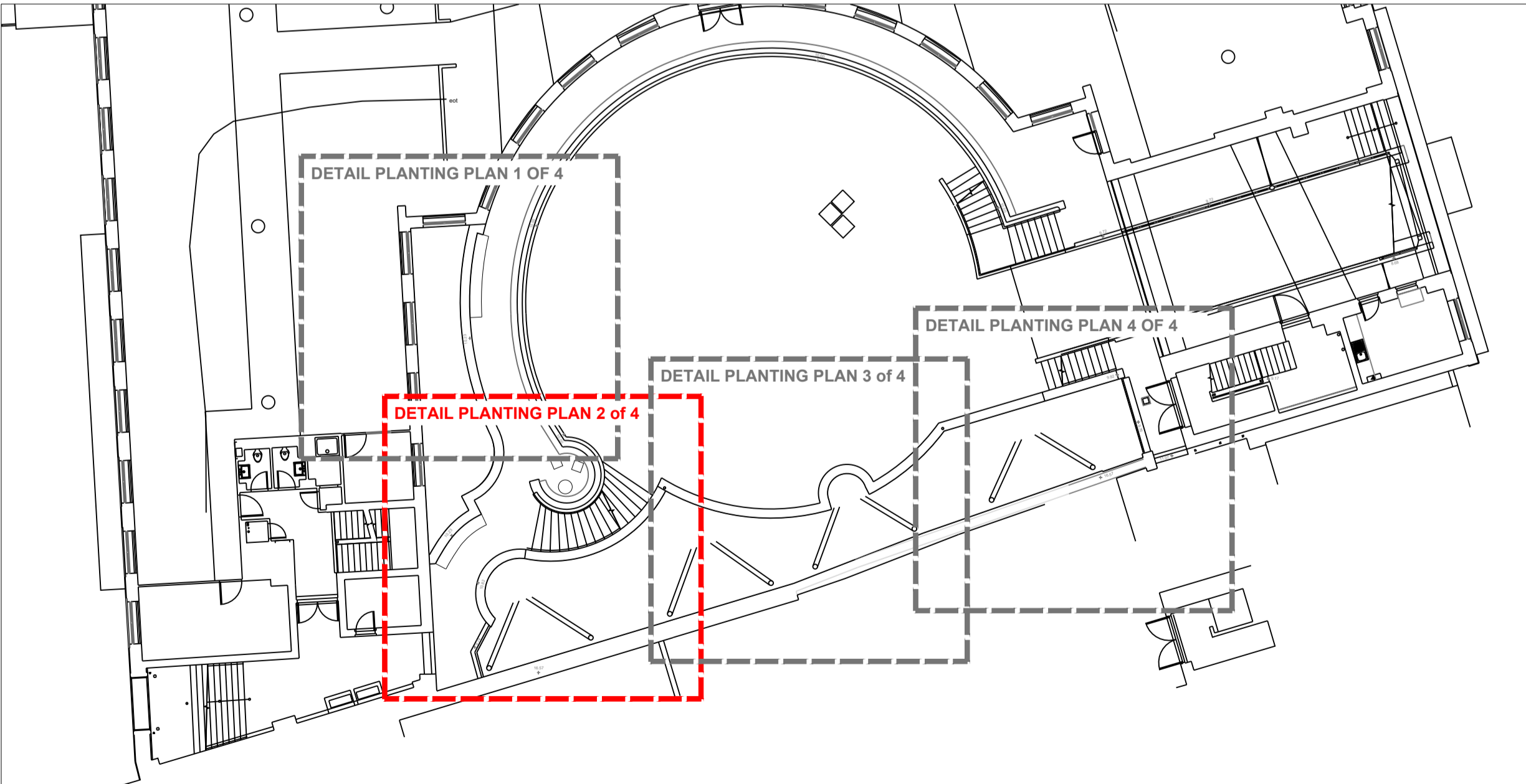
Species	Size
Euphorbia amygdaloides	2L Pot
Geranium macrorrhizum 'Ingwersen'	2L Pot
Heuchera 'Plum pudding'	2L Pot

Emergents/ Pops:

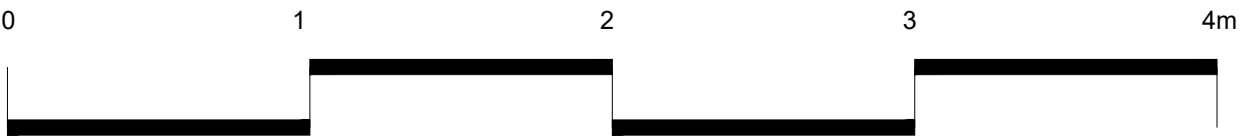
Species	Size
Rodgersia aesculifolia	3L Pot

Bulbs / Corms

Species	Density
Allium 'Red Mohican'	9/m ²
Iris sibirica 'Tropic night'	6/m ²



Do not scale drawings. All dimensions to be checked on site. Errors to be reported immediately to landscape architect. To be read in conjunction with all relevant architects, Services and engineers drawings.



Revision Tracker	Status	Date
P01 - For information	S2	06.11.2024

Churchman Thornhill Finch
 London
 3rd Floor, 14 Bowden Street,
 Kennington, London SE11 4DS
 +44(0)20 3727 6780

Redcliff Quay
 Bristol
 1.14 Temple Studios,
 Temple Gate, BS1 6QA
 +44(0)20 3727 6788

Date: 06.11.2024
 Scale: 1:25/A1
 Drawn: KM/DF

Location: Bristol
 Client: Skelton Developments

699-CTF-XX-XX-DR-L-50108