

DETAIL PLANTING PLAN LEGEND - SW-01

Coastal Garden - Flowering Shrub and Perennial Mix

Swathes:

Species	Size
Artemisia 'Powis Castle'	2L Pot
Stipa calamagrostis	2L Pot
Stipa gigantea	2L Pot

Pockets:

Species	Size
Anemone x hybrida 'Honorine Jobert'	2L Pot
Salvia 'Blue Spire'	2L Pot
Santolina chamaecyparissus	1L Pot

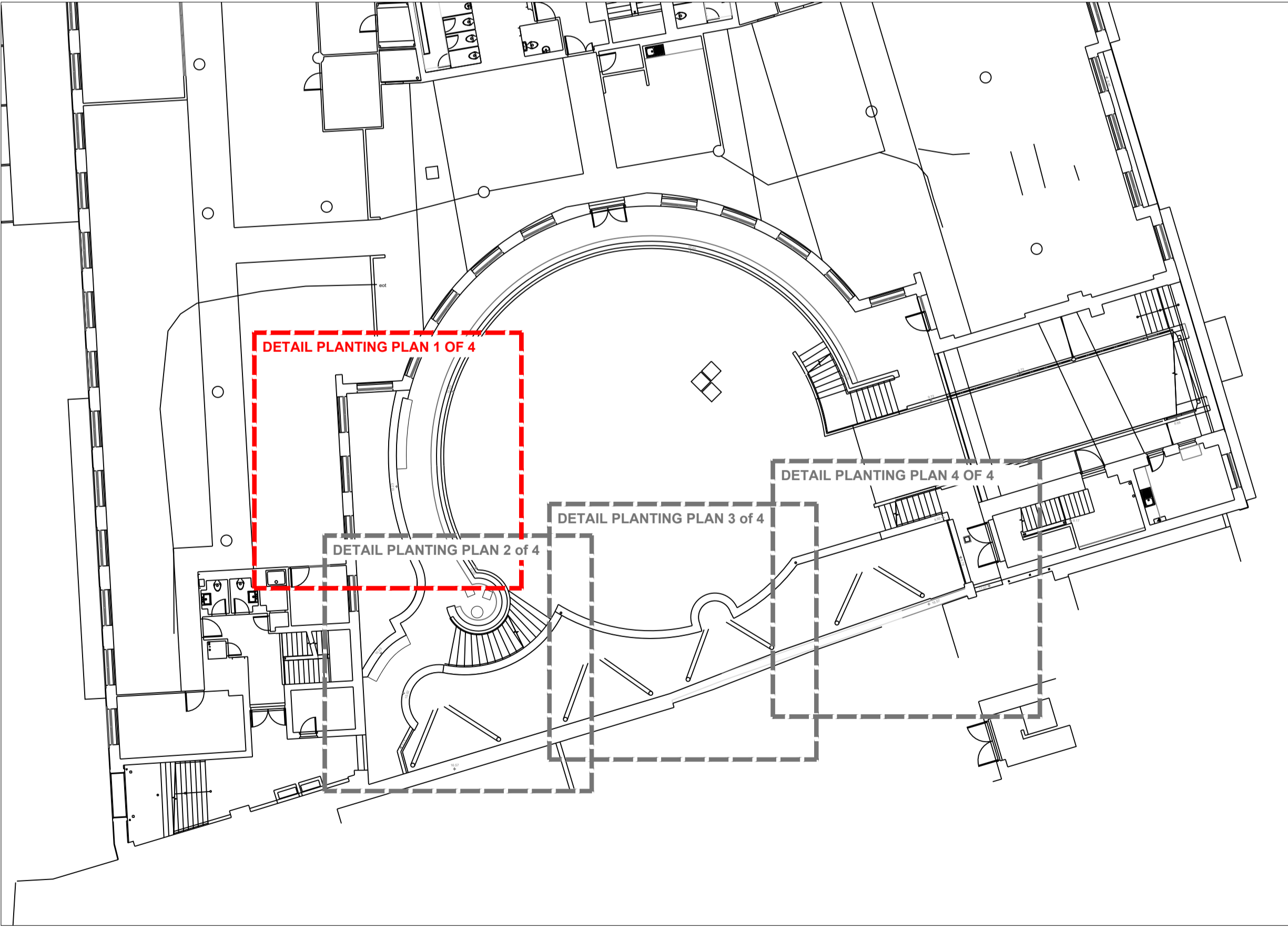
Emergents/ Pops:

Species	Size
Agapanthus 'Polar Ice'	2L Pot
Armeria maritima	1L Pot
Olearia x haastii	3L Pot

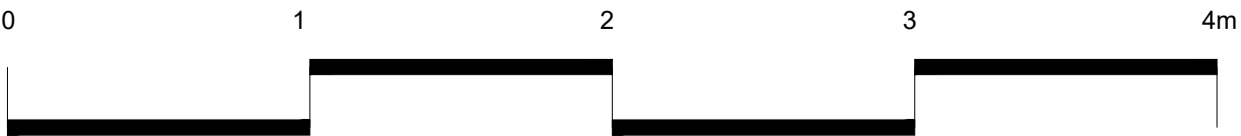
Bulbs / Corms

Species	Density
Nerine bowdenii 'Isabel'	4/m ²

For numbers of plants and bulbs refer to planting schedule 699-CTF-XX-XX-SH-L-50001



Do not scale drawings. All dimensions to be checked on site.
Errors to be reported immediately to landscape architect.
To be read in conjunction with all relevant architects, Services and engineers drawings.



Revision Tracker
P01 - For information

Status
S2 06.11.2024

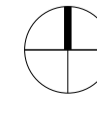
Churchman Thornhill Finch

Date 06.11.2024
Scale 1:25/A1
Drawn KM/DF

Location Bristol
Client Skelton Developments

Redcliff Quay
Detail planting plan - Courtyard 1 of 4

699-CTF-XX-XX-DR-L-50107



Status **S2**
Revision **P01**