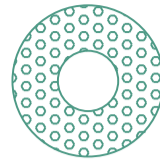




**DETAIL PLANTING PLAN LEGEND - SW-01**

**Coastal Garden - Flowering Shrub and Perennial Mix**

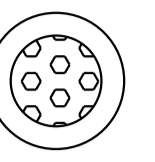

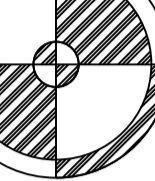
**Swathes:**

Species	Size
 Artemisia 'Powis Castle'	2L Pot
 Stipa calamagrostis	2L Pot
 Stipa gigantea	2L Pot


**Pockets:**

Species	Size
 Anemone x hybrida 'Honorine Jobert'	2L Pot
 Salvia 'Blue Spire'	2L Pot
 Santolina chamaecyparissus	1L Pot

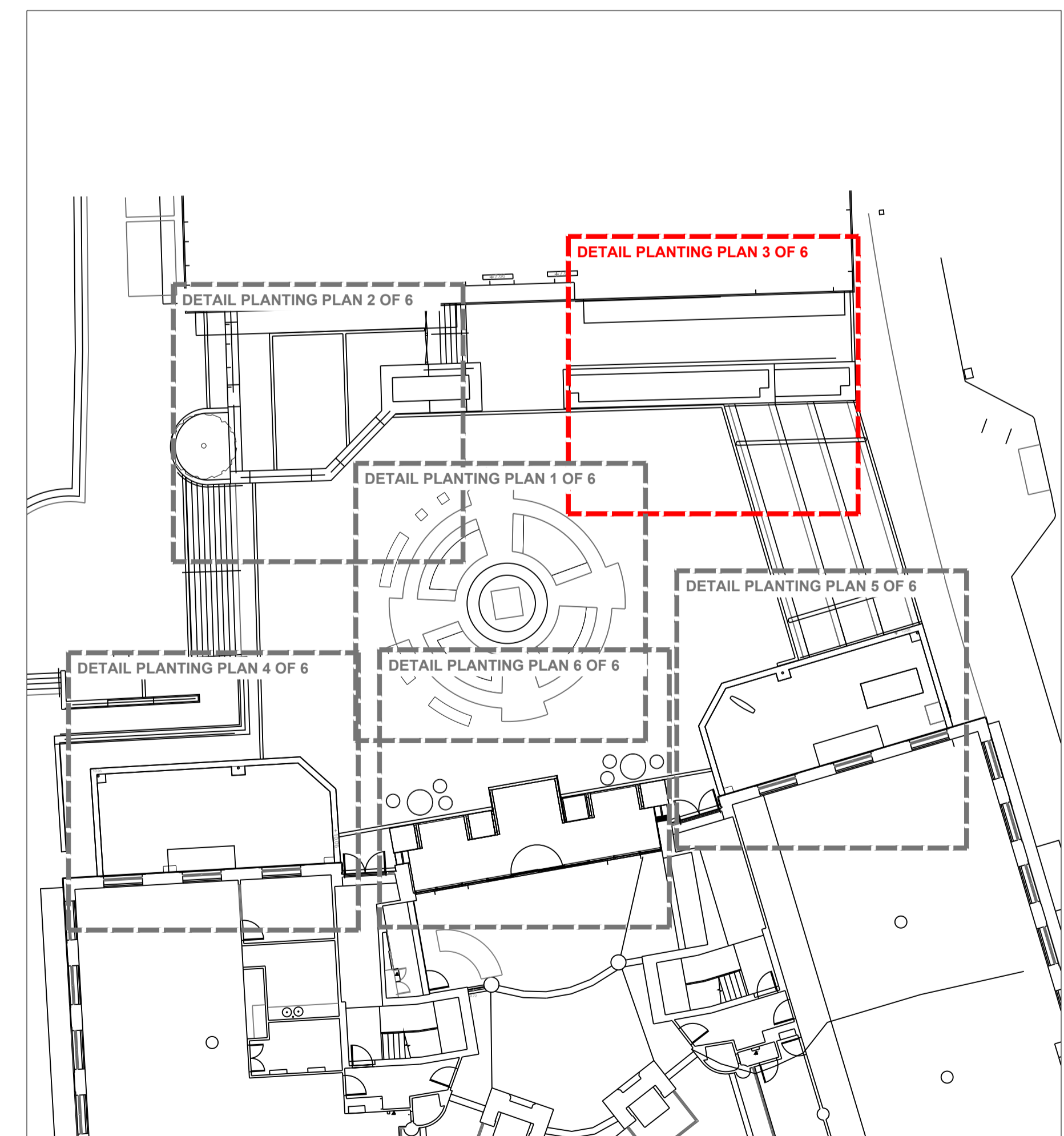
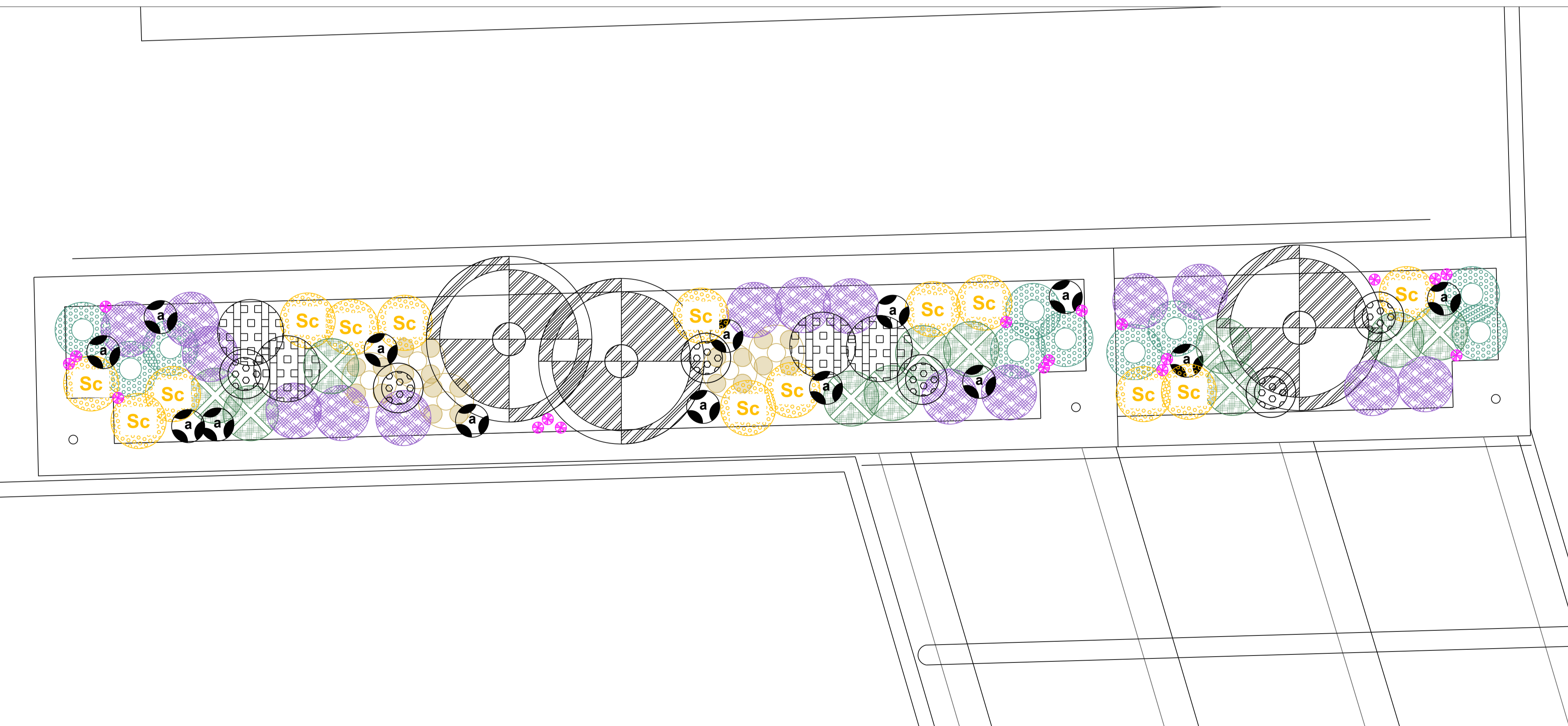
**Emergents/ Pops:**

Species	Size
 Agapanthus 'Polar Ice'	2L Pot
 Armeria maritima	1L Pot
 Olearia x haastii	3L Pot

**Bulbs / Corms**

Species	Density
 Nerine bowdenii 'Isabel'	4/m <sup>2</sup>

For numbers of plants and bulbs refer to planting schedule 699-CTF-XX-XX-SH-L-50001



Do not scale drawings. All dimensions to be checked on site.  
 Errors to be reported immediately to landscape architect.  
 To be read in conjunction with all relevant architects, Services and engineers drawings.



**Revision Tracker**  
 P01 - For information

**Status**  
 S2 06.11.2024

**Churchman Thornhill Finch**  
 London  
 3rd Floor, 14 Bowden Street,  
 Kennington, London SE11 4DS  
 +44(0)20 3727 6780

Date 06.11.2024  
 Scale 1:25/A1  
 Drawn KM/DF

Location Bristol  
 Client Skelton Developments

**Redcliff Quay**  
 Detail planting plan - Plaza 3 of 6

699-CTF-XX-XX-DR-L-50103

Status **S2**  
 Revision **P01**