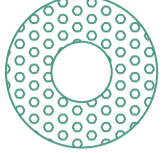




DETAIL PLANTING PLAN LEGEND - SW-01

Coastal Garden - Flowering Shrub and Perennial Mix

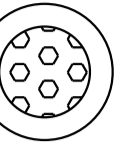

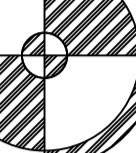
Swathes:

Species	Size
 Artemisia 'Powis Castle'	2L Pot
 Stipa calamagrostis	2L Pot
 Stipa gigantea	2L Pot


Pockets:

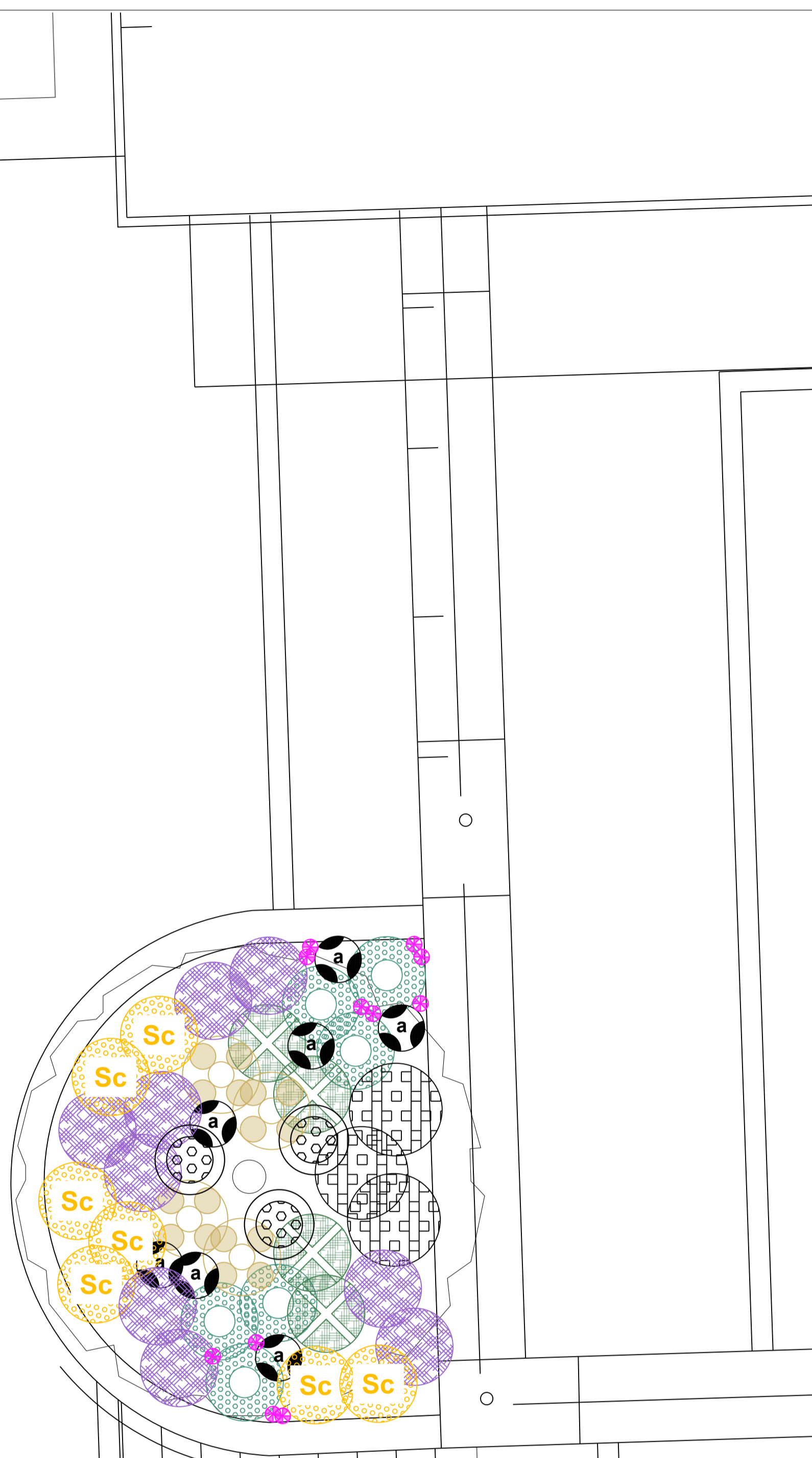
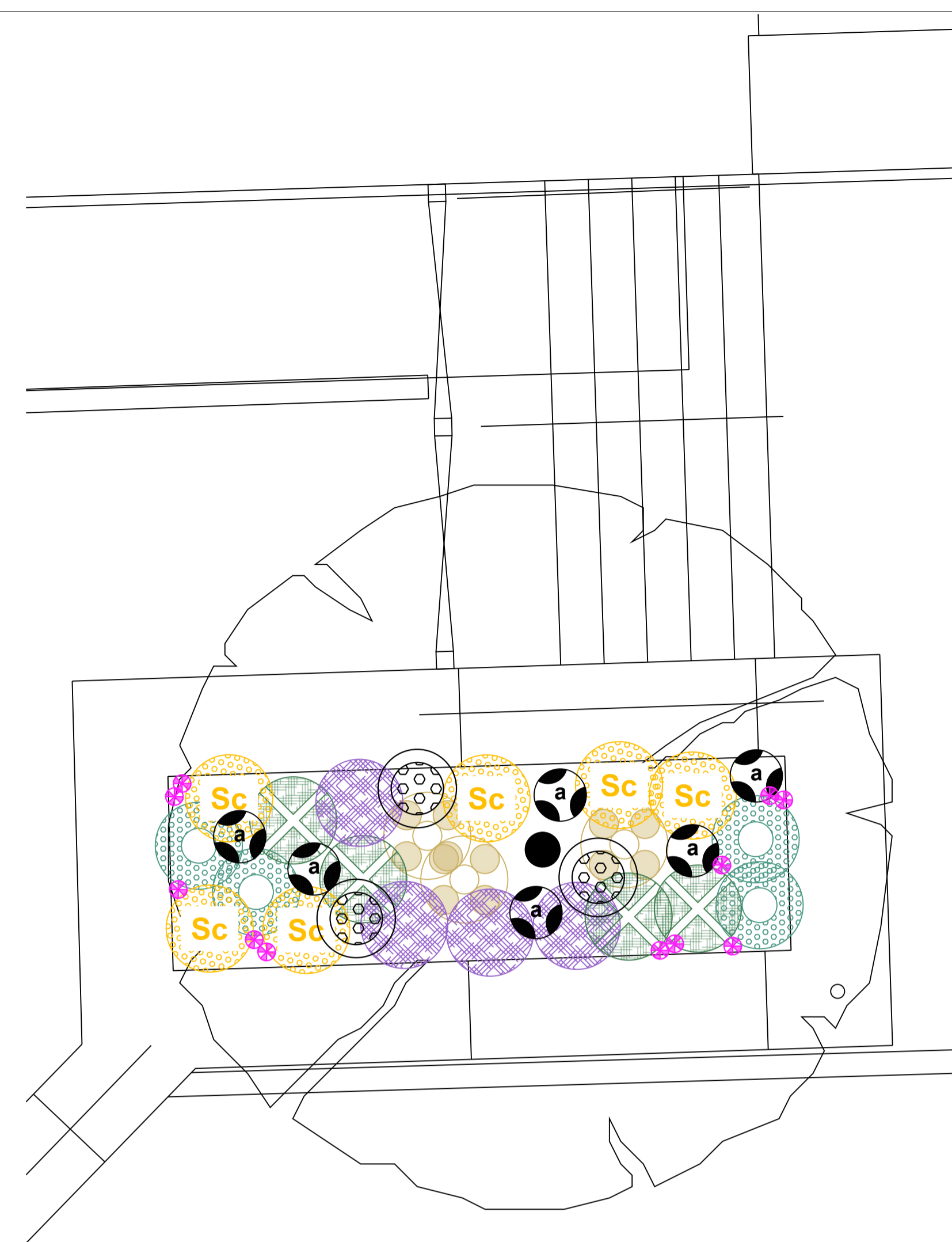
Species	Size
 Anemone x hybrida 'Honorine Jobert'	2L Pot
 Salvia 'Blue Spire'	2L Pot
 Santolina chamaecyparissus	1L Pot

Emergents/ Pops:

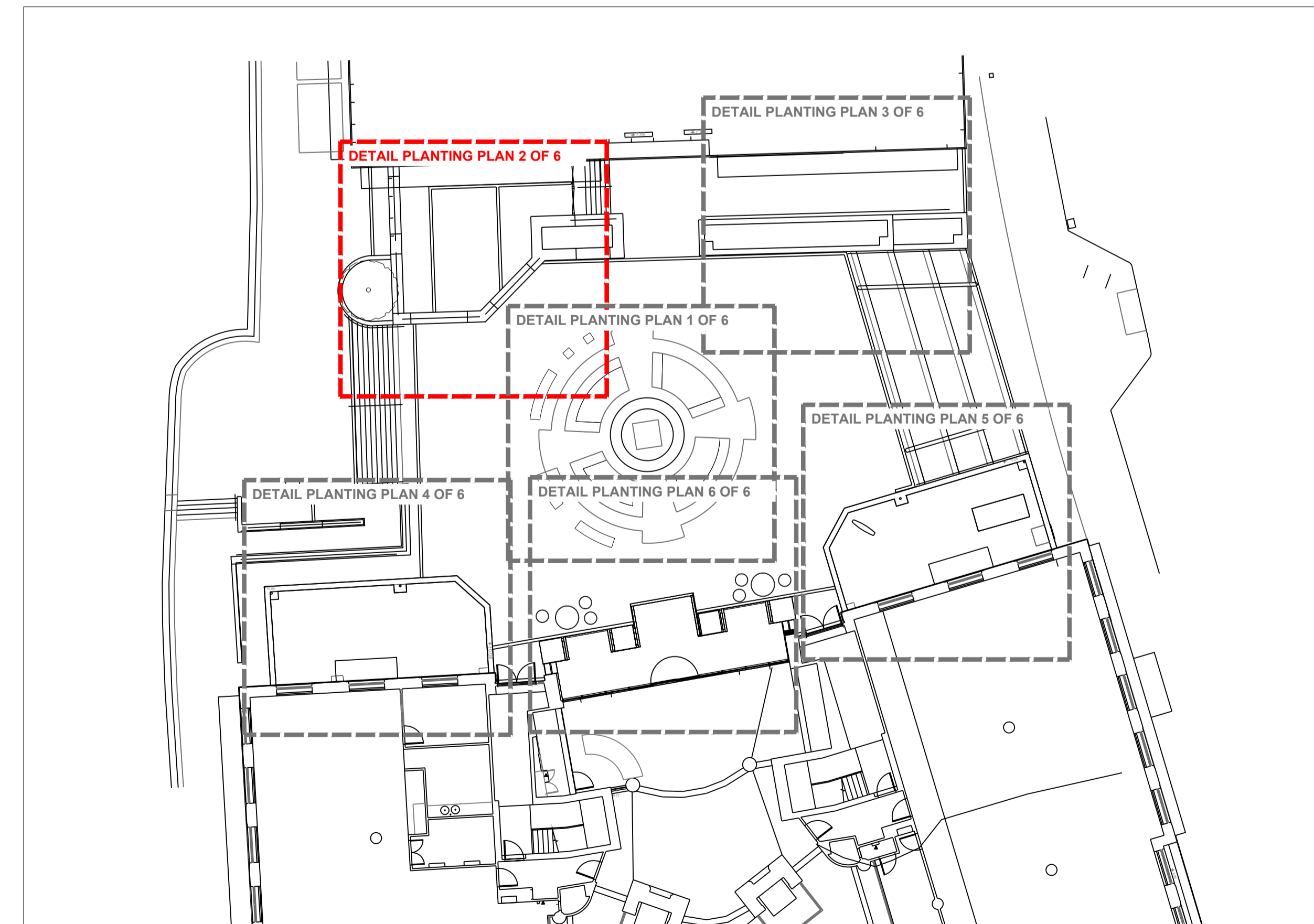
Species	Size
 Agapanthus 'Polar Ice'	2L Pot
 Armeria maritima	1L Pot
 Olearia x haastii	3L Pot

Bulbs / Corms

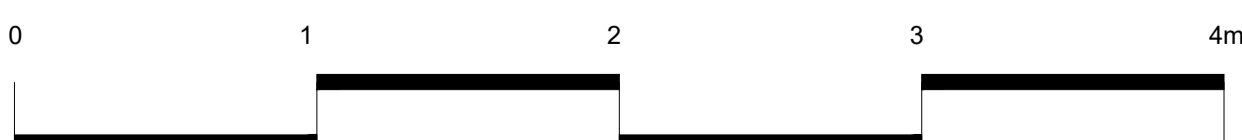
Species	Density
 Nerine bowdenii 'Isabel'	4/m ²



For numbers of plants and bulbs refer to planting schedule 699-CTF-XX-XX-SH-L-50001



Do not scale drawings. All dimensions to be checked on site.
Errors to be reported immediately to landscape architect.
To be read in conjunction with all relevant architects, Services and engineers drawings.



Revision Tracker
P01 - For information

Status
S2 06.11.2024

Churchman Thornhill Finch

London
3rd Floor, 14 Bowden Street,
Kennington, London SE11 4DS
+44(0)20 3727 6780

Bristol
1.14 Temple Studios,
Temple Gate, BS1 6QA
+44(0)20 3727 6788

mail@churchmanthornhillfinch.co.uk

Date 06.11.2024
Scale 1:25/A1
Drawn KM/DF

Location Bristol
Client Skelton Developments

Redcliff Quay
Detail planting plan - Plaza 2 of 6

699-CTF-XX-XX-DR-L-50102



Status **S2**
Revision **P01**